



\$1,109,850*

Maddy Rajenthiran

0418 253 991 | 13 64 69

mrajenthiran@domainehomes.com.au



LISMORE 22

LAZZARO FACADE

Lot 16 Proposed Road,
Werrington, Werrington

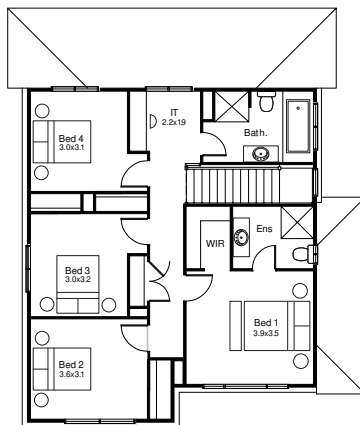
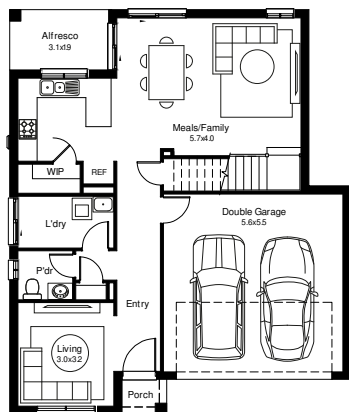
Home Size: 206.1m²

Land Size: 264.5m²

HOUSE AND LAND PACKAGE INCLUSIONS

- Lifetime Structural Guarantee
- Hybrid steel frame
- Floor coverings
- 20mm stone kitchen benchtop
- Flyscreens to opening windows
- Induction cooktop
- Fully ducted Air Conditioning
- Driveway included
- Soft close drawers and doors to kitchen and bathroom
- 6.6kW Solar Package

And much, much more...



4



2



2.5



2

*Facade image may depict features not included in the package prices shown such as render, tiling, lighting, roof covering, timber decking and landscaping. Plans are subject to approval by the Principal Developer and Local Authorities. Domaine Homes NSW reserves the right to withdraw or alter this package at any time without notice. Allowance for site costs included, pricing is subject to change without notice. Domaine Homes NSW is not the owner of the land and is not responsible for final site dimensions or registration times. All information given at this time is believed to be correct.

Domaine homes