

Pacha Sofa, Fully Upholstered, 4- Seater

Designed by Piere Paulin - 1975



ITEM NUMBER

44782

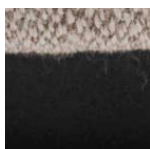
DESCRIPTION

When the Pacha Collection was designed in 1975, it replaced the austerity of post-war design with a more organic approach, reflecting the changing design style of the time. A joyful modernist, Paulin's low-slung pieces provided a new laid-back perspective on life and his forward-looking, eclectic and sculptural approach to furniture design instantly caught the mood of the swinging 60's. The Pacha sofa is fully upholstered, has a painted wood base and is available with a fixed base or returning swivel base.

Materials & Finishes

BASE FINISH

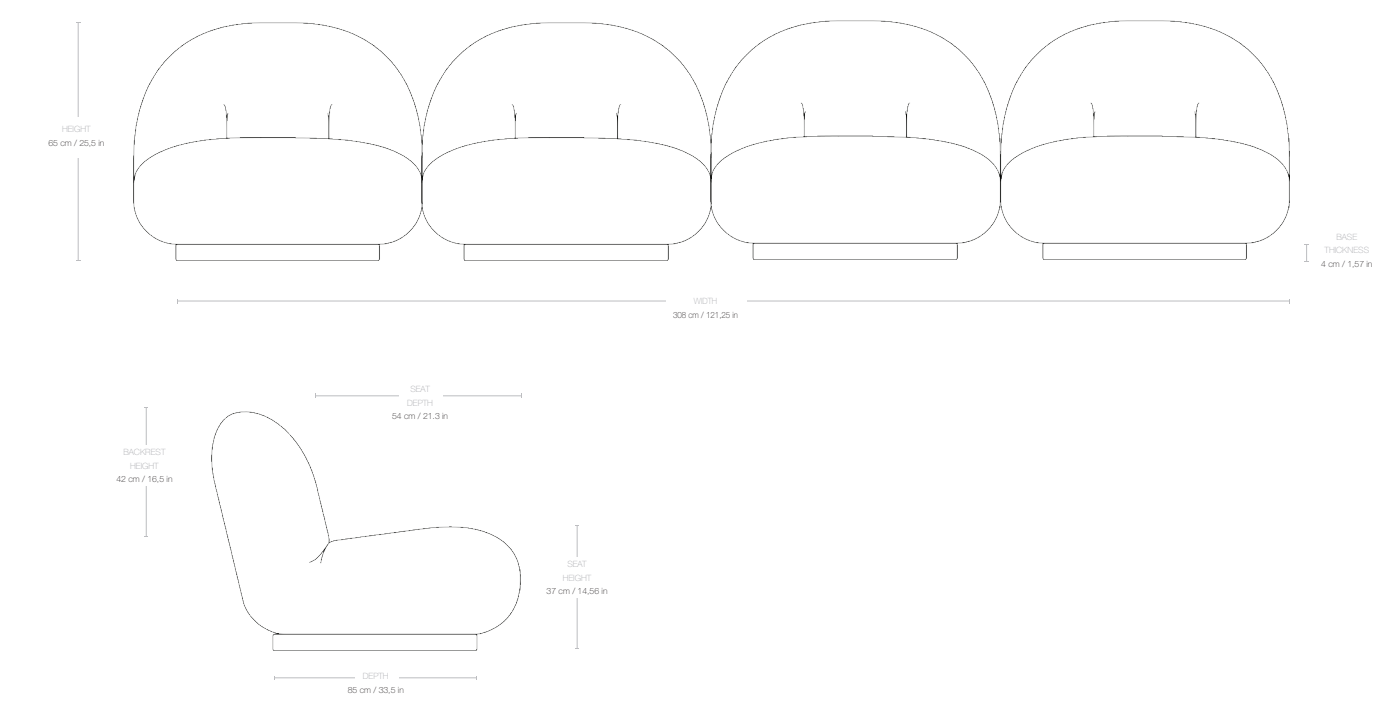
Black Semi Matt (RAL 9005 / Gloss 10) , Pearl Gold (RAL 1035 Pearl beige / Gloss 10)



MATERIALS

Bend plywood (inside structure), cut foam (padding and armrest), laquered MDF (base)

Dimensions



WIDTH	308 cm / 121,25 in
DEPTH	85 cm / 33,5 in
HEIGHT	65 cm / 25,5 in
SEAT DEPTH	54 cm / 21,3 in
SEAT HEIGHT	37 cm / 14,56 in
BACKREST HEIGHT	42 cm / 16,5 in

Weight

TOTAL WEIGHT	104 kg / 229,28 lbs
--------------	---------------------

Upholstery Consumption

X 140 CM FABRIC WIDTH / X 55 IN FABRIC WIDTH	
FABRIC CONSUMPTION	1120 cm / 440,94 in

Packaging

NUMBER OF PARCELS	4
PACKAGING 1	
PACKAGING LENGTH	120 cm / 47,24 in
PACKAGING WIDTH	80 cm / 31,49 in
PACKAGING HEIGHT	85 cm / 33,46 in
PACKAGING WEIGHT	14,5 kg / 31,96 lbs
GROSS WEIGHT	40,5 kg / 89,28 lbs

PACKAGING 2	
PACKAGING LENGTH	120 cm / 47,24 in
PACKAGING WIDTH	80 cm / 31,49 in
PACKAGING HEIGHT	85 cm / 33,46 in
PACKAGING WEIGHT	14,5 kg / 31,96 lbs
GROSS WEIGHT	40,5 kg / 89,28 lbs

PACKAGING 3	
PACKAGING LENGTH	120 cm / 47,24 in
PACKAGING WIDTH	80 cm / 31,49 in
PACKAGING HEIGHT	85 cm / 33,46 in
PACKAGING WEIGHT	14,5 kg / 31,96 lbs
GROSS WEIGHT	40,5 kg / 89,28 lbs

PACKAGING 4	
PACKAGING LENGTH	120 cm / 47,24 in
PACKAGING WIDTH	80 cm / 31,49 in
PACKAGING HEIGHT	85 cm / 33,46 in
PACKAGING WEIGHT	14,5 kg / 31,96 lbs
GROSS WEIGHT	40,5 kg / 89,28 lbs

Test & Certifications

TSCA	Yes, title VI Compliant for Formaldehyde
CALIFORNIA TB 117	Yes, US only
BS5852 (CRIB5)	Yes, UK only

Glides

RUBBER GLIDES	Included as standard
KEY FEATURES	The option to create your own modular configurations, see the pricelist for all pre-configured options.
INDIVIDUAL MODULES	Please note that the standard Pacha Lounge chair does not work as a module for configurations. For configurations the Center module needs to be used.

Pacha Sofa, Fully Upholstered, 4-Seater with armrests

Designed by Piere Paulin - 1975



ITEM NUMBER

31734

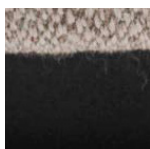
DESCRIPTION

When the Pacha Collection was designed in 1975, it replaced the austerity of post-war design with a more organic approach, reflecting the changing design style of the time. A joyful modernist, Paulin's low-slung pieces provided a new laid-back perspective on life and his forward-looking, eclectic and sculptural approach to furniture design instantly caught the mood of the swinging 60's. The Pacha sofa is fully upholstered, has a painted wood base and is available with a fixed base or returning swivel base.

Materials & Finishes

BASE FINISH

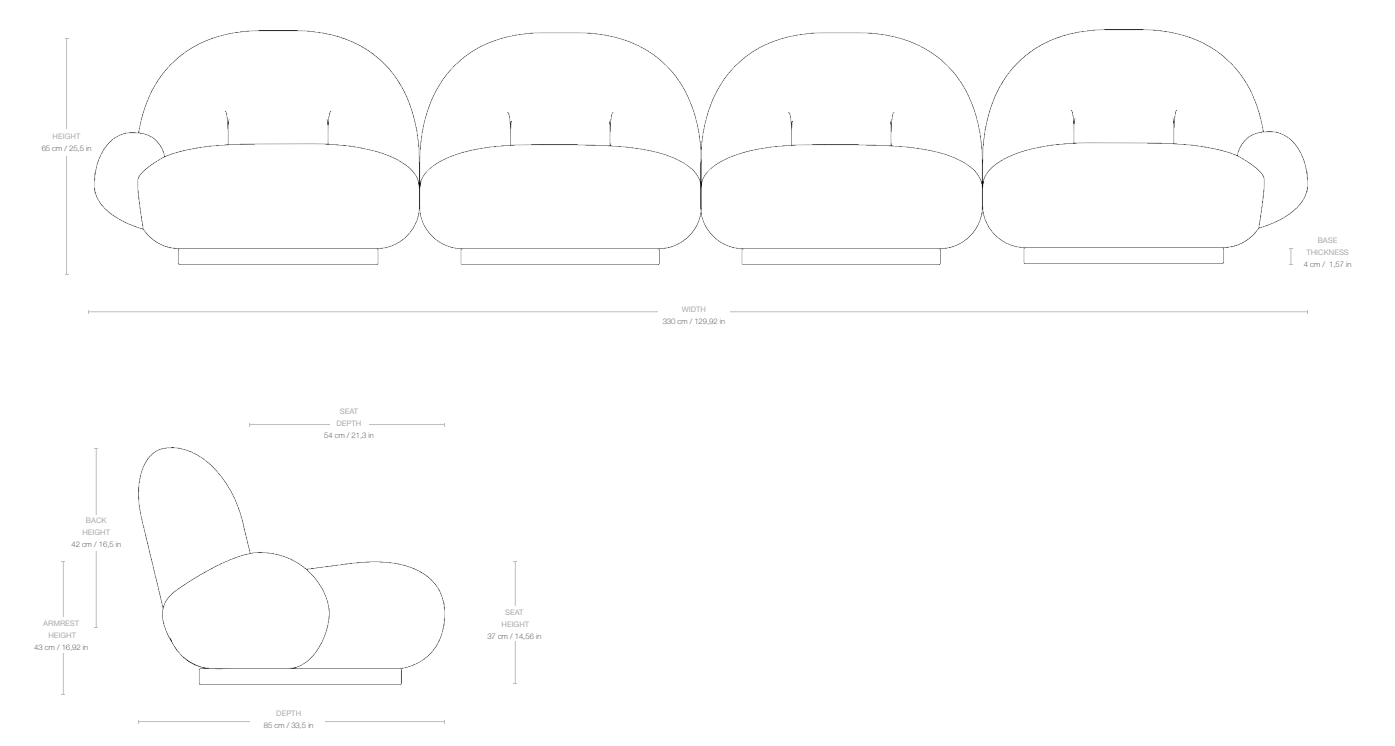
Black Semi Matt (RAL 9005 / Gloss 10) , Pearl Gold (RAL 1035 Pearl beige / Gloss 10)



MATERIALS

Bend plywood (inside structure), cut foam (padding and armrest), laquered MDF (base)

Dimensions



WIDTH	330 cm / 129,92 in
DEPTH	85 cm / 33,5 in
HEIGHT	65 cm / 25,5 in
SEAT DEPTH	54 cm / 21,3 in
SEAT HEIGHT	37 cm / 14,56 in
BACKREST HEIGHT	42 cm / 16,5 in
ARMREST HEIGHT	43 cm / 16,92 in

Weight

TOTAL WEIGHT	105,5 kg / 232,58 lbs
--------------	-----------------------

Upholstery Consumption

X 140 CM FABRIC WIDTH / X 55 IN FABRIC WIDTH	
FABRIC CONSUMPTION	1240 cm / 488,18 in

Packaging

NUMBER OF PARCELS	4
PACKAGING 1	
PACKAGING LENGTH	120 cm / 47,24 in
PACKAGING WIDTH	80 cm / 31,49 in
PACKAGING HEIGHT	85 cm / 33,46 in
PACKAGING WEIGHT	14,5 kg / 31,96 lbs
GROSS WEIGHT	40,5 kg / 89,28 lbs

PACKAGING 2	
PACKAGING LENGTH	120 cm / 47,24 in
PACKAGING WIDTH	80 cm / 31,49 in
PACKAGING HEIGHT	85 cm / 33,46 in
PACKAGING WEIGHT	14,5 kg / 31,96 lbs
GROSS WEIGHT	40,5 kg / 89,28 lbs

PACKAGING 3	
PACKAGING LENGTH	120 cm / 47,24 in
PACKAGING WIDTH	80 cm / 31,49 in
PACKAGING HEIGHT	85 cm / 33,46 in
PACKAGING WEIGHT	14,5 kg / 31,96 lbs
GROSS WEIGHT	41,25 kg / 90,94 lbs

PACKAGING 4	
PACKAGING LENGTH	120 cm / 47,24 in
PACKAGING WIDTH	80 cm / 31,49 in
PACKAGING HEIGHT	85 cm / 33,46 in
PACKAGING WEIGHT	14,5 kg / 31,96 lbs
GROSS WEIGHT	41,25 kg / 90,94 lbs

Test & Certifications

TSCA	Yes, title VI Compliant for Formaldehyde
CALIFORNIA TB 117	Yes, US only
BS5852 (CRIB5)	Yes, UK only

Glides

RUBBER GLIDES	Included as standard
KEY FEATURES	The option to create your own modular configurations, see the pricelist for all pre-configured options.
INDIVIDUAL MODULES	Please note that the standard Pacha Lounge chair does not work as a module for configurations. For configurations the Center module needs to be used.

Pacha Collection - Pacha Sofa

4-seater w. armrests incl. middle armrest

Designed by Piere Paulin - 1975



ITEM NUMBER

31735

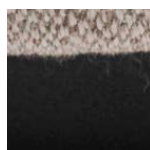
DESCRIPTION

When the Pacha Collection was designed in 1975, it replaced the austerity of post-war design with a more organic approach, reflecting the changing design style of the time. A joyful modernist, Paulin's low-slung pieces provided a new laid-back perspective on life and his forward-looking, eclectic and sculptural approach to furniture design instantly caught the mood of the swinging 60's. The Pacha sofa is fully upholstered, has a painted wood base and is available with a fixed base or returning swivel base.

Materials & Finishes

BASE FINISH

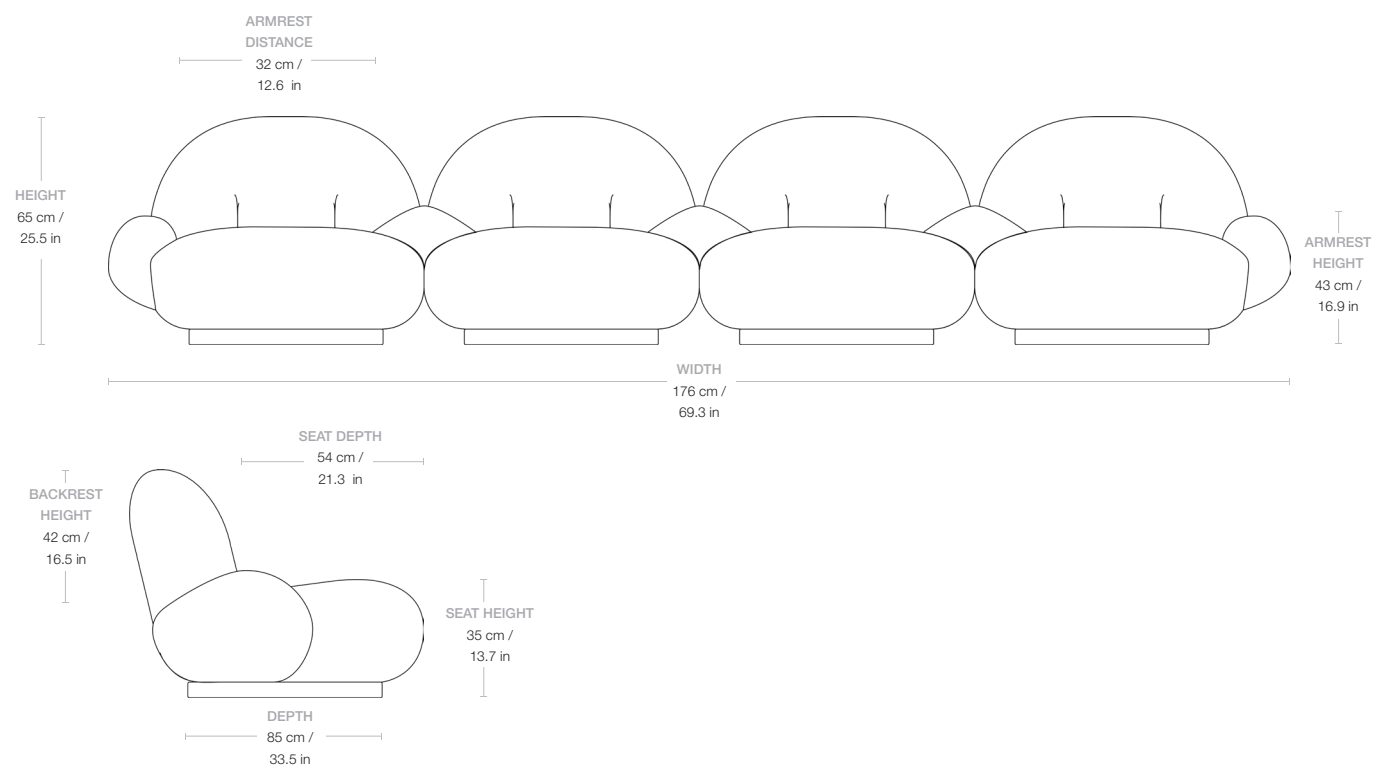
Black Semi Matt (RAL 9005 / Gloss 10) , Pearl Gold (RAL 1035 Pearl beige / Gloss 10)



MATERIALS

Bend plywood (inside structure), cut foam (padding and armrest), laquered MDF (base)

Dimensions



WIDTH	330 cm / 129.9 in
DEPTH	85 cm / 33.5 in
HEIGHT	65 cm / 25.5 in
SEAT DEPTH	54 cm / 21.3 in
SEAT HEIGHT	35 cm / 13.7 in
BACKREST HEIGHT	42 cm / 16.5 in
ARMREST HEIGHT	43 cm / 16.9 in
ARMREST DISTANCE	32 cm / 12.6 in

Weight

TOTAL WEIGHT	47.6 kg / 104.9 lbs
---------------------	---------------------

Upholstery Consumption

X 140 CM FABRIC WIDTH / X 55 IN FABRIC WIDTH

FABRIC CONSUMPTION

780 cm / 307 in

Packaging

NUMBER OF PARCELS	2
PACKAGING LENGTH	86 cm / 33.8 in
PACKAGING WIDTH	88 cm / 34.6 in
PACKAGING HEIGHT	70 cm / 27.5 in
PACKAGING WEIGHT	6 kg / 13.2 lbs
GROSS WEIGHT	53.6 kg / 118.2 lbs

Test & Certifications

TSCA	Yes, title VI Compliant for Formaldehyde
CALIFORNIA TB 117	Yes, US only
BS5852 (CRIB5)	Yes, UK only

Glides

RUBBER GLIDES	Included as standard
---------------	----------------------

KEY FEATURES	The option to create your own modular configurations, see the pricelist for all pre-configured options.
--------------	---

INDIVIDUAL MODULES	Please note that the standard Pacha Lounge chair does not work as a module for configurations. For configurations the Center module needs to be used.
--------------------	---