

## Africa armchair

by Eugeni Quitllet

Vondom's Africa furniture collection, designed by Eugeni Quitllet, captures the essence of simplicity and originality. With pieces that combine beauty and functionality, Africa is ideal for those looking for elegant and comfortable outdoor furniture. "The simplest things are the most original... The most original thing is to be simple...", declares the designer, encapsulating the philosophy of this collection.



## Info

---

### Description

Made from polypropylene and reinforced with fiberglass manufactured by gas injection. Stackable . Available in various colors. Suitable for indoor and outdoor use.

Weight: 5.93 Kg



## Finishes

---

### finishes

---

Basic

Ref. 65005



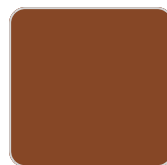
white



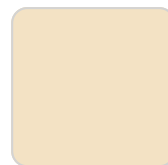
black



ecru



clay



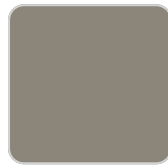
cream



jade



ocean



tortora

Available in various colors

### fabric

---

BAIONA

Ref. 65005CO



black 10114 baiona



clay 10106 baiona



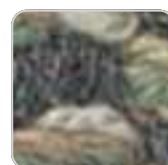
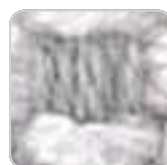
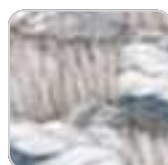
gray 10113 baiona



camel 10104 baiona



blue 10112 baiona



# VONDOM

cream 10103 baiona



white 10100 baiona

tortora 10102 baiona



jade 10109 baiona

ocean 10111 baiona



brown 10108 baiona

ecru 10101 baiona



garnet 10107 baiona

green 10110 baiona

Group 1C. High density 100% acrylic fabric, which provides a solid feel. It has an irregular pattern that adds a handcrafted touch.

## CALELLA

Ref. 65005CO



blue 10127 calella



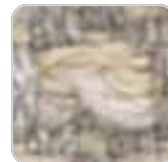
jade 10126 calella



clay 10125 calella



mustard 10124 calella



cream 10123 calella



tortora 10122 calella



anthracite 10129  
calella



ecru 10121 calella



gray 10128 calella



white 10120 calella

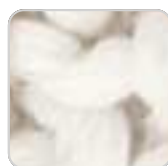
Group 1C. PFAS-free 100% acrylic fabric with a rich and unusual texture and an exceptional softness, which enhances the comfort of the furniture.

## FISTERRA

Ref. 65005CO



cream 10132 fisterra



white 10130 fisterra



ecru 10131 fisterra



tortora 10135 fisterra



camel 10134 fisterra

# VONDOM



peach 10146 fisterra



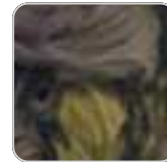
clay 10137 fisterra



garnet 10138 fisterra



brown 10136 fisterra



olive 10145 fisterra



jade 10139 fisterra



green 10140 fisterra



ocean 10141 fisterra



blue 10142 fisterra



gray 10143 fisterra



anthracite 10144  
fisterra



black 10147 fisterra

Group 1C. 100% acrylic fabric, with a distinctive irregular marbled pattern and a soft feel.

## PORTONOVO Ref. 65005CO



camel 10154  
portonovo



blue 10162 portonovo



ocean 10161  
portonovo



cream 10153  
portonovo



green 10160  
portonovo



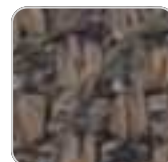
tortora 10152  
portonovo



jade 10159 portonovo



ecru 10151 portonovo



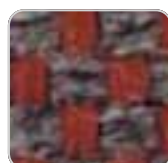
brown 10158  
portonovo



white 10150  
portonovo



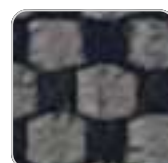
black 10165  
portonovo



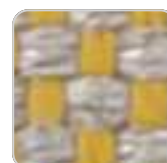
garnet 10157  
portonovo



clay 10156 portonovo



anthracite 10164  
portonovo



mustard 10155  
portonovo



gray 10163 portonovo

Group 1A. 100% acrylic fabric, with a flat and simple design, which adapts to any decorative style.

## ALTEA

Ref. 65005CO



tortora 1102 altea



white 1100 altea



camel 1120 altea



clay 1122 altea



garnet 1106 altea



brown 1104 altea



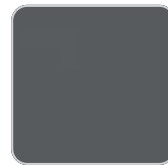
jade 1125 altea



ocean 1123 altea



gray 1101 altea



anthracite 1124 altea



black 1105 altea

Group 1A. Soft outdoor fabric with leather-like texture.

## AROUSA

Ref. 65005CO



tortora 1209 arousa



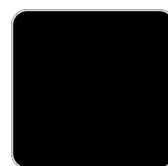
camel 1230 arousa



clay 1231 arousa



brown 1214 arousa



jade 1235 arousa

# VONDOM



gray 1208 arousa



anthracite 1210  
arousa

Group 1B. Soft outdoor fabric with shiny finish.

## Ambients

---

