



Catalogue Zijtveld Grabs



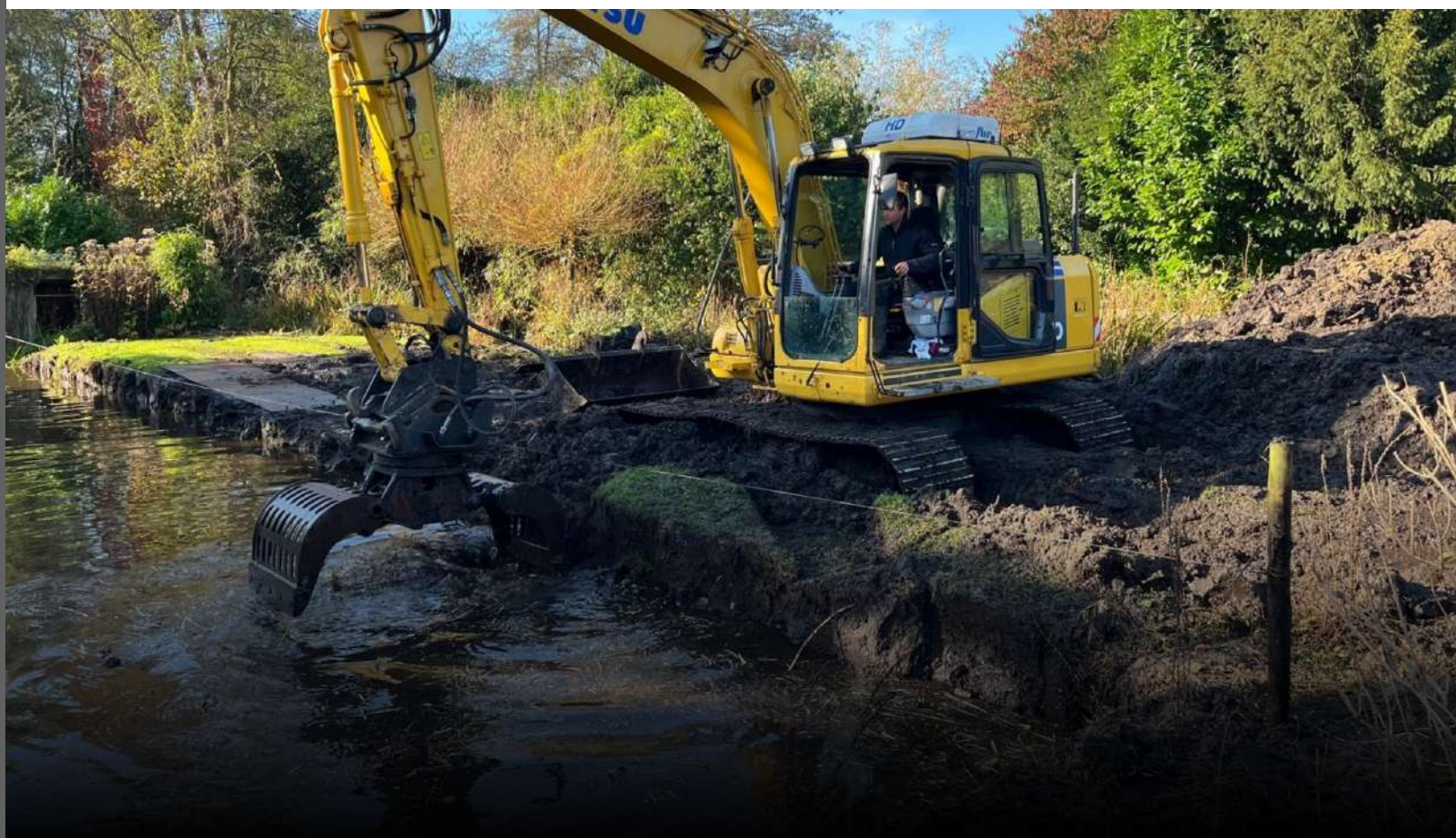
Chapter	Page
Features demolition and sorting grabs	04-05
Technical specifications demolition and sorting grabs	06-11
Features tree grabs	12-13
Technical specifications tree grabs	14-19
Features truck mounted crane grabs	20-21
Technical specifications truck mounted crane grabs	22-23
Features multi grabs	24-25
Technical specifications multi grabs	26-27
Features stone grabs	28-29
Technical specifications stone grabs	30-31
Features combi cutters	32-33
Technical specifications Combi Cutters	34-35
Available options	36-37
Automatic lubrication system	38-39
Available adaptors	40-41

Hydraulic grabs from Zijtveld

Welcome to Zijtveld – Your trusted supplier of top-quality hydraulic grabs! With over 30 years of industry leadership, we provide the most powerful, reliable, and efficient grabs available. Our extensive range is designed to meet the needs of a variety of applications, including demolition, waste handling and recycling, land clearance, construction, environmental projects, and forest maintenance.

In this brochure, you'll find a detailed overview of our grabs, their applications, the different models available, and their technical specifications. You'll also discover the options we offer to customize your equipment to best suit your needs. Should you have any questions, our team and network of distributors are here to assist you.

From grabs weighing as little as 75kg to those up to 20,000kg, we have the perfect solution for every task. Additionally, we offer a wide range of options to ensure our grabs fit your operations seamlessly, providing maximum convenience and efficiency.



Demolition and sorting grabs

360° Hydraulic rotation

Maximum maneuverability with full 360° hydraulic rotation.

Highly suitable for the toughest tasks as a result of the robust slewing ring.

Advanced and sturdy slewing ring system that protects the slewing ring by keeping the grease clean and securely contained within the system.

Exchangeable wear blades.

From model S200-D onwards, the cutting edges are interchangeable and reversible.

Countersunk blade bolts prevent material buildup.

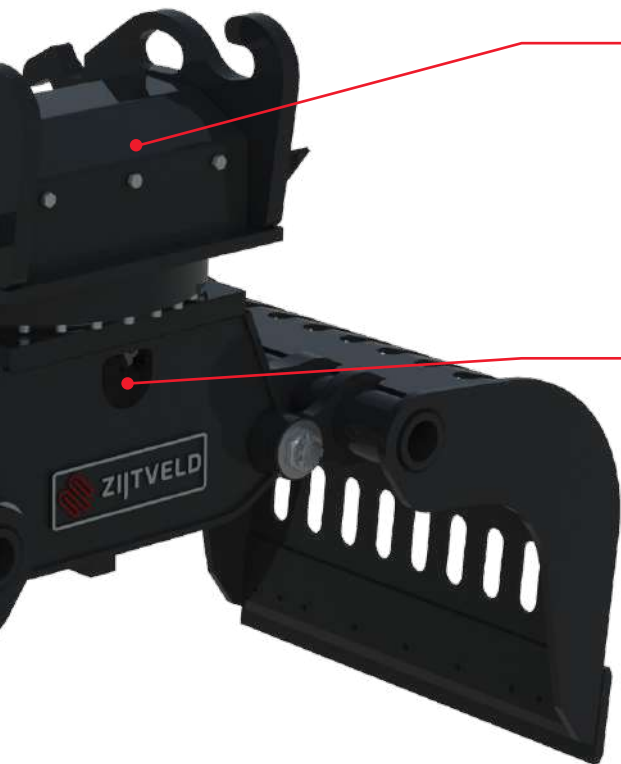
The entire shells including the exchangeable wear blades are made of high-quality Hardox.



Innovation

The demolition and sorting grabs in the 04-Series are equipped with innovative improvements that provide extra strength and durability. The reinforced main frame offers more stability and higher load capacity, making the grabs even more resistant to intensive use. In addition, the shell tubes have a larger diameter, further increasing structural strength.

For even longer life and maximum reliability, additional bolts have been added to the exchangeable wear blades, making them more solid and secure. Thanks to these innovations, 04-Series demolition and sorting grabs are the ideal choice for tough and demanding applications.



Hydraulic motors

Starting from model S603-D, dual hydraulic motors are standard, ensuring optimal power distribution on the slewing ring

Cylinders

Starting from model S804-D, dual cylinders are standard, ensuring optimal power.

Cylinders with internal end damping: so no use of external stop lugs.

The special cylinder configuration reduces movement, minimizing wear of the hydraulics.

Automatic lubrication system

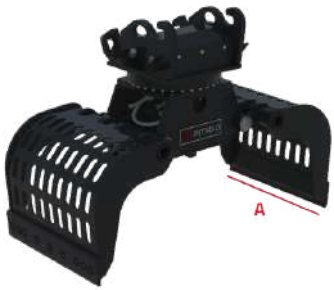
From model S804-D onwards, the grabs are available with the automatic lubrication system (see page 38).

Application

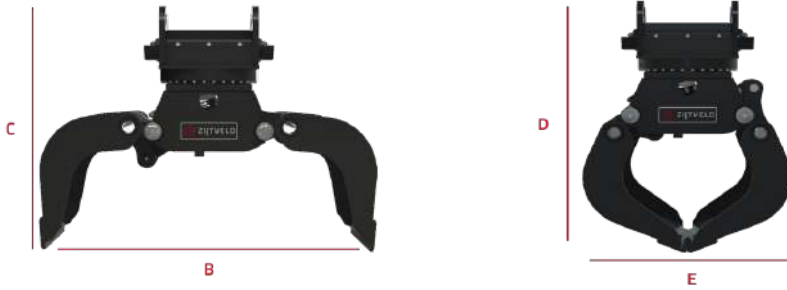
Our demolition and sorting grabs are ideal for demanding applications in industries such as recycling, demolition, and environmental management. They provide exceptional grip and control when handling materials like debris, wood, and scrap, making them perfect for demolishing structures, sorting waste, and relocating materials on construction sites or land clearance projects.

Their wear-resistant Hardox construction ensures durability and reliability, even in the most challenging conditions.

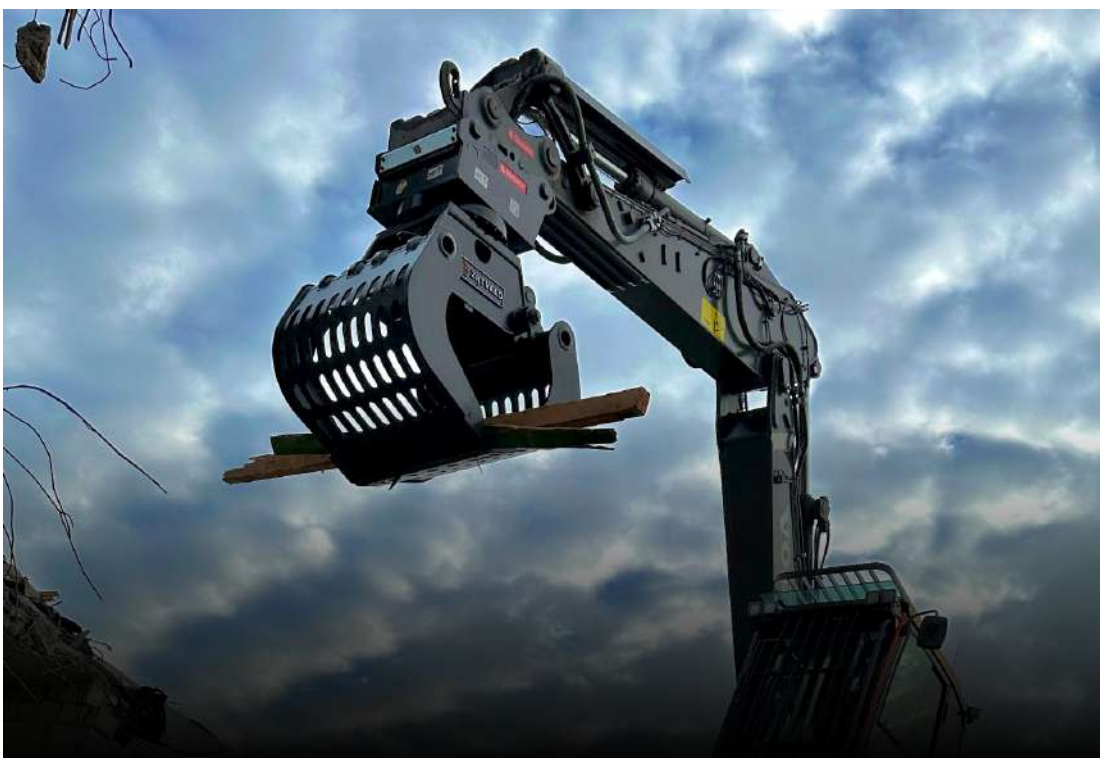
Demolition and sorting grabs



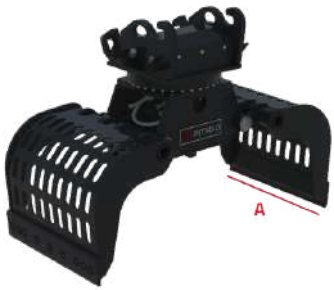
		S75-D	S100-D	S150-D	S200-D	S300-D	S400-D	
Weight class excavator	t	0,7-1,2	1-2	1,5-3	2,5-4	2,5-5	4-6	
Weight	kg	75	90	140	240	280	350	
Operating pressure max.	bar	300	300	300	300	300	300	
Operating pressure rotation min.	bar	170	170	170	170	170	190	
Operating pressure rotation max.	bar	210	210	210	210	210	210	
Oil flow max.	l/min.	15	20	25	35	35	40	
Oil flow rotation max.	l/min.	5	5	10	10	10	12	
Shell width A	mm	300	350	450	500	500	600	
Width opened B	mm	600	770	800	1160	1160	1400	
Height opened C	mm	595	610	650	710	770	880	
Height closed D	mm	600	670	670	810	850	1010	
Width closed E	mm	430	500	545	785	780	850	
Capacity	ltr	30	40	70	100	100	150	
Closing force	kn	6	7	15	20	20	23	
Hose connection pinch function	-	L10	L10	S12	S12	S12	S12	
Hose connection swivel function	-	L10	L10	L10	L10	L10	L10	



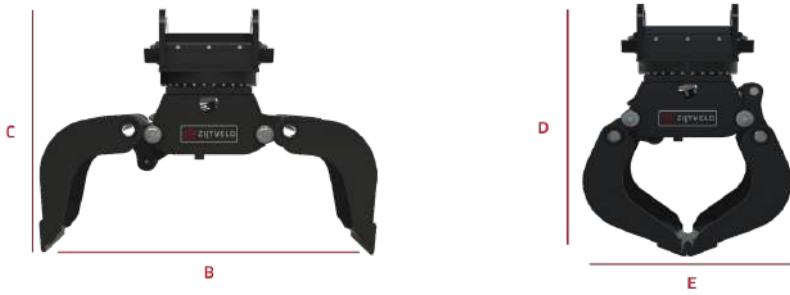
S450-D	S452-D	S502-D	S603-D	S804-D	S904-D	S1004-D	S1104-D
5-8	6-11	7-12	10-16	12-20	13-20	16-20	16-25
400	450	600	840	990	1030	1060	1350
300	320	350	350	350	350	350	350
190	190	190	190	190	190	190	190
210	210	210	210	210	210	210	210
50	70	90	100	120	120	150	150
12	15	15	25	25	25	25	35
700	700	600	800	800	900	1000	900
1500	1550	1700	1750	1950	1950	1950	2100
900	1025	1050	1140	1215	1240	1240	1410
1055	1100	1235	1315	1440	1470	1470	1600
890	885	1055	1070	1180	1180	1175	1300
200	200	300	400	500	600	700	750
24	24	30	35	46	46	46	55
S12	S16	S16	S20	S20	S20	S20	S25
L10	S12	S12	S16	S16	S16	S16	S16



Demolition and sorting grabs



		S1204-D	S1404-D	S1704-D	S1804-D	S1904-D	S2504-D	
Weight class excavator	ton	17-28	20-28	23-30	24-35	25-38	28-50	
Weight	kg	1450	1550	1750	1800	1900	2435	
Operating pressure max.	bar	350	350	350	350	350	350	
Operating pressure rotation min.	bar	190	190	190	190	190	190	
Operating pressure rotation max.	bar	210	210	210	210	210	210	
Oil flow max.	l/min.	160	170	170	170	180	200	
Oil flow rotation max.	l/min.	35	35	35	35	35	35	
Shell width A	mm	1000	1200	1200	1200	1200	1200	
Width opened B	mm	2100	2100	2250	2250	2250	2200	
Height opened C	mm	1410	1410	1500	1550	1650	1635	
Height closed D	mm	1600	1600	1680	1680	1690	1830	
Width closed E	mm	1300	1300	1400	1400	1400	1370	
Capacity	ltr	800	850	900	950	900	1000	
Closing force	kn	68	68	80	80	80	90	
Hose connection pinch function	-	S25	S25	S25	S25	S25	S30	
Hose connection swivel function	-	S16	S16	S16	S16	S16	S16	



S2704-D	S3004-D	S4000-D	S4500-D	S5003-D	S8000-D	S14000-D	S20000-D
30-50	35-50	40-65	45-80	45-100	70-120	100-200	175-300
2635	2935	4000	4200	5000	7250	13000	18000
350	350	350	350	350	350	350	350
190	190	190	190	190	190	190	190
210	210	250	250	250	250	250	250
200	200	250	250	300	320	350	375
35	35	40	40	60	70	100	125
1360	1500	1500	1500	1500	1800	1800	2040
2200	2400	2850	2850	3000	3800	4450	4850
1635	1635	1800	1800	1825	2210	2570	2765
1830	1935	2050	2090	2150	2525	3100	3200
1370	1475	1755	1755	1890	2400	2830	3190
1100	1300	1500	1500	1600	3600	5000	6700
90	90	110	110	130	150	180	230
S30	S30	SAE	SAE	SAE	SAE	SAE	SAE
S16	S16	S20	S20	S20	S25	S25	S25

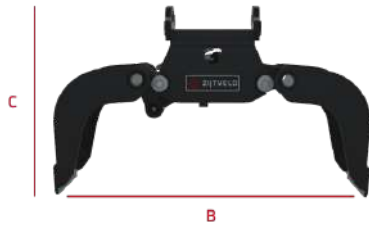


Demolition and sorting grabs without rotation



		S75-ZD	S100-ZD	S150-ZD	S200-ZD	S400-ZD	S450-ZD
Weight class excavator	ton	0,7-1,2	1-2	1,2-3	2,5-4	4-6	5-9
Weight	kg	50	65	100	200	280	330
Operating pressure max.	bar	300	300	300	300	300	300
Oil flow max.	l/min.	15	20	25	35	40	50
Shell width A	mm	300	350	450	500	600	700
Width opened B	mm	600	770	800	1160	1400	1500
Height opened C	mm	365	370	505	595	675	705
Height closed D	mm	385	450	540	695	840	875
Width closed E	mm	430	500	545	785	850	890
Capacity	ltr	30	40	70	100	150	200
Closing force	kn	6	7	15	20	23	24

		S1404-ZD	S1904-ZD	S2504-ZD	S2704-ZD	S3004-ZD
Weight class excavator	ton	20-28	25-38	28-40	30-50	35-50
Weight	kg	1300	1500	1900	2100	2400
Operating pressure max.	bar	350	350	350	350	350
Oil flow max.	l/min.	170	180	200	200	200
Shell width A	mm	1200	1200	1200	1360	1500
Width opened B	mm	2100	2250	2250	2250	2450
Height opened C	mm	1040	1050	1200	1200	1210
Height closed D	mm	1240	1330	1380	1380	1485
Width closed E	mm	1300	1401	1370	1370	1475
Capacity	ltr	850	900	1000	1100	1300
Closing force	kn	68	80	90	90	90



S452-ZD	S502-ZD	S603-ZD	S804-ZD	S904-ZD	S1004-ZD	S1104-ZD	S1204-ZD
6-11	7-12	10-16	12-20	13-20	16-20	16-25	17-28
340	500	600	775	785	800	1100	1200
300	350	350	350	350	350	350	350
50	90	100	120	120	120	150	160
700	600	800	800	900	1000	900	1000
1500	1700	1750	1950	1950	1950	2100	2100
710	745	775	900	900	900	1040	1040
875	925	950	1100	1100	1100	1230	1240
885	1055	1070	1180	1180	1180	1300	1300
200	300	400	500	600	700	750	800
24	30	35	46	46	46	55	68

Tree grabs

360° Hydraulic rotation

Maximum maneuverability with full 360° hydraulic rotation.

Highly suitable for the toughest tasks as a result of the robust slewing ring.

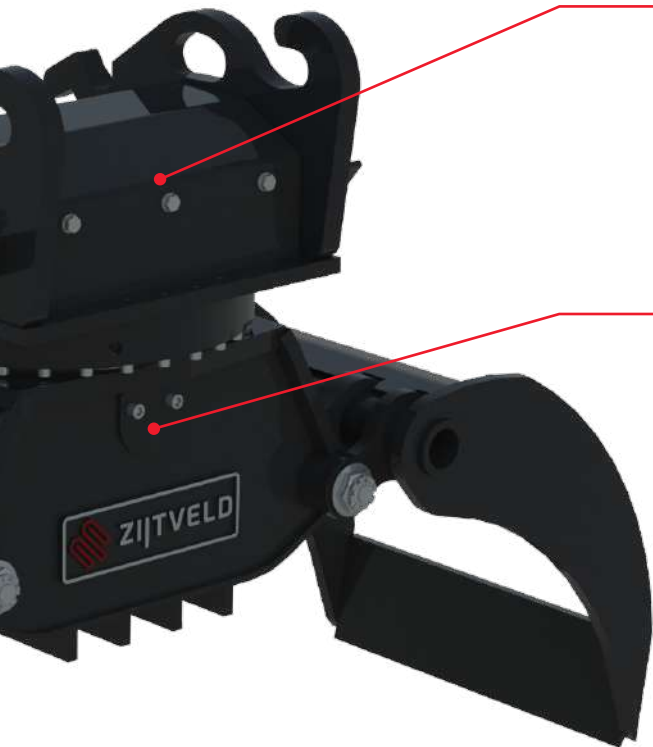
Advanced and sturdy slewing ring system that protects the slewing ring by keeping the grease clean and securely contained within the system.



Innovation

The 04-Series tree grabs are equipped with innovative improvements that provide extra strength and durability. The main frame offers more stability and higher load capacity, making the grabs even more resistant to intensive use. In addition, the shell tubes have a larger diameter, further increasing structural strength.

These innovations make the 04-Series tree grabs the ideal choice for tough and demanding applications.



Hydraulic motors

Starting from model S602-B, dual hydraulic motors are standard, ensuring optimal power distribution on the slewing ring.

Cylinders

Starting from model S804-B, dual cylinders are standard, ensuring optimal power distribution.

The special cylinder configuration reduces movement, minimizing wear of the hydraulics.

The special cylinder arrangement reduces wear and tear on the hydraulics as the cylinders move less.

Automatic lubrication system

From model S804-B onwards, the grabs are available with the automatic lubrication system (see page 38).

Application

Our grabs are available with or without a slewing ring, depending on the application. With a grapple with slewing ring on the machine, you can rotate the grapple around its axis. If your machine has a slewing tilt, it is not necessary to have a slewing ring on your grab; then you can choose a tree grab without a slewing ring.

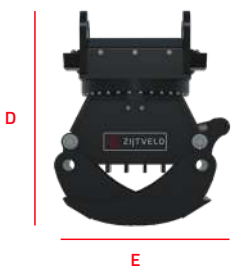
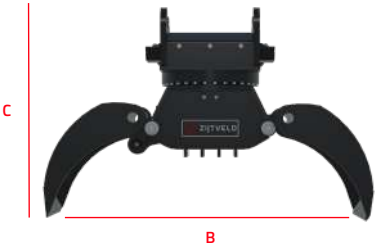
Our grabs are available with or without a slewing ring, depending on the application. With a grapple with slewing ring on the machine, you can rotate the grapple around its axis. If your machine has a slewing tilt, it is not necessary to have a slewing ring on your grab; then you can choose a tree grab without a slewing ring. Grabs are also available with 7 tines for extra grip

Tree grabs

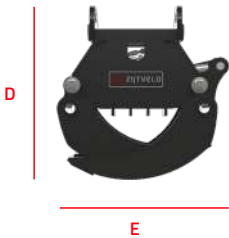
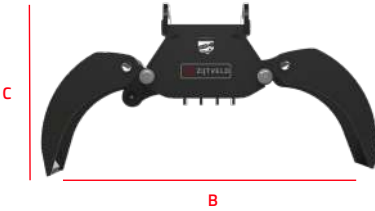


		S150-B	S300-B	S400-B	S450-B	S452-B	S602-B
Weight class excavator	ton	1,2-3	3,5-5	4-6	5-8	6-11	10-16
Weight	kg	150	200	330	350	450	800
Operating pressure max.	bar	300	300	300	300	320	350
Operating pressure rotation min.	bar	170	170	190	190	190	190
Operating pressure rotation max.	bar	210	210	210	210	210	210
Oil flow max.	l/min.	25	25	50	50	70	100
Oil flow rotation max.	l/min.	10	10	12	12	15	25
Shell width wide shell A	mm	450	450	550	550	550	515
Shell width small shell A	mm	400	400	500	500	500	435
Width opened B	mm	1100	1100	1540	1540	1540	2050
Height opened C	mm	655	700	850	855	965	1200
Height closed D	mm	565	610	760	166	880	1100
Width closed E	mm	500	500	740	740	740	915
Closing force	kn	15	15	24	24	24	35
Hose connection pinch function	-	S12	S12	S12	S12	S16	S20
Hose connection swivel function	-	L10	L10	L10	L10	S12	S16

		B150-ZD	B450-ZD	B602-ZD	B804-ZD	B1202-ZD
Weight class excavator	ton	1,2-3	5-8	10-16	12-20	17-28
Weight	kg	110	280	560	720	1200
Operating pressure max.	bar	300	300	350	350	350
Oil flow max.	l/min.	25	50	100	120	160
Shell width wide shell A	mm	450	550	515	735	910
Shell width small shell A	mm	400	500	435	635	810
Width opened B	mm	1100	1540	2050	2050	2250
Height opened C	mm	505	690	1350	830	1025
Height closed D	mm	430	610	757	740	870
Width closed E	mm	505	740	904	935	1078
Closing force	kn	15	24	35	46	68



	S804-B	S1104-B	S1202-B	S1802-B	S1900-B	S2700-B
	12-20	16-24	17-28	20-28	25-35	30-50
	1000	1000	1500	1600	1800	2900
	350	350	350	350	350	350
	190	190	190	190	190	190
	210	210	210	210	210	210
	120	120	160	160	160	200
	25	35	35	35	35	40
	735	910	910	910	910	1200
	635	650	810	810	810	1000
	2050	2050	2250	2250	2250	2850
	1185	1260	1460	1415	1475	1640
	1095	1185	1300	1260	1340	1505
	935	935	1080	1080	1080	1375
	46	46	46	68	68	90
	S20	S25	S25	S25	S25	S30
	S16	S16	S16	S16	S16	S16



Tree grabs

360° Hydraulic rotation

Maximum maneuverability with full 360° hydraulic rotation.

Highly suitable for the toughest tasks as a result of the robust slewing ring.

Advanced and sturdy slewing ring system that protects the slewing ring by keeping the grease clean and securely contained within the system.



Innovation

The 04-Series tree grabs are equipped with innovative improvements that provide extra strength and durability. The main frame offers more stability and higher load capacity, making the grabs even more resistant to intensive use. In addition, the shell tubes have a larger diameter, further increasing structural strength.

These innovations make the grippers in the 04 Series the ideal choice for heavy and demanding applications.



Hydraulic motors

Starting from model S602-B 7T, dual hydraulic motors are standard, ensuring optimal power distribution on the slewing ring.

Cylinders

Starting from model S804-B 7T, dual cylinders are standard, ensuring optimal power distribution.

Cylinders with internal end damping: so no use of external stop lugs.

The special cylinder configuration reduces movement, minimizing wear of the hydraulics.

Automatic lubrication system

From model S804-B onwards, the grabs are available with the automatic lubrication system (see page 38).

Application

Our tree grabs are ideal for moving, sorting and handling trees, branches and large pipes. They are widely used in forestry, landscape maintenance and wood processing industries, for example when loading logs. Thanks to the robust construction made of wear-resistant Hardox, our grabs are extremely durable and can withstand heavy loads.

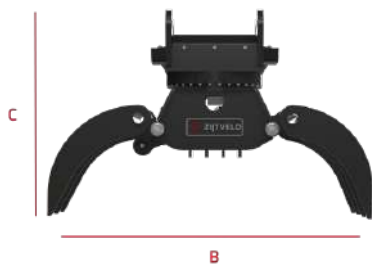
Our grabs are available with or without a slewing ring, depending on the application. With a grapple with slewing ring on the machine, you can rotate the grapple around its axis. If your machine has a slewing tilt, it is not necessary to have a slewing ring on your grab; then you can choose a tree grab without a slewing ring.

Tree grabs

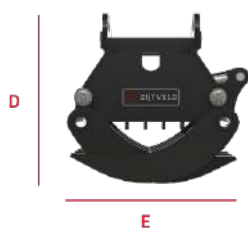
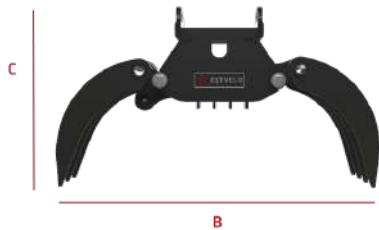


		S150-B 7 TINES	S300-B 7 TINES	S400-B 7 TINES	S450-B 7 TINES	S452-B 7 TINES	S602-B 7 TINES
Weight class excavator	ton	1,5-4	3,5-5	4-6	5-8	6-11	10-16
Weight	kg	160	210	380	400	500	920
Operating pressure max.	bar	300	300	300	300	320	350
Operating pressure rotation min.	bar	170	170	190	190	190	190
Operating pressure rotation max.	bar	210	210	210	210	210	210
Oil flow max.	l/min.	30	30	50	50	70	100
Oil flow rotation max.	l/min.	10	10	12	12	15	25
Shell width wide shell A	mm	450	450	735	735	735	800
Shell width small shell A	mm	330	330	500	500	500	535
Width opened B	mm	1100	1100	1540	1540	1540	2050
Height opened C	mm	640	690	840	850	955	1160
Height closed D	mm	565	612	760	775	900	1035
Width closed E	mm	510	500	740	755	750	895
Closing force	kn	15	15	24	24	24	35
Hose connection pinch function	-	S12	S12	S12	S12	S16	S20
Hose connection swivel function	-	L10	L10	L10	L10	S12	S16

		B150-ZD 7 TINES	B450-ZD 7 TINES	B602-ZD 7 TINES	B804-ZD 7 TINES	B1202-ZD 7 TINES
Weight class excavator	ton	1,5-4	5-8	10-16	12-20	17-28
Weight	kg	120	330	680	840	1400
Operating pressure max.	bar	300	300	350	350	350
Oil flow max.	l/min.	30	50	100	120	170
Shell width wide shell A	mm	450	735	800	910	1230
Shell width small shell A	mm	330	500	535	650	840
Width opened B	mm	1100	1540	2050	2050	2250
Height opened C	mm	765	1000	1350	1340	1550
Height closed D	mm	432	596	745	750	870
Width closed E	mm	500	756	890	940	1085
Closing force	kn	15	24	35	46	68



S804-B 7 TINES	S1104-B 7 TINES	S1202-B 7 TINES	S1802-B 7 TINES	S1900-B 7 TINES	S2700-B 7 TINES
12-20	16-25	20-30	20-30	25-35	30-50
1100	1150	1700	1800	2050	2970
350	350	350	350	350	350
190	190	190	190	190	190
210	210	210	210	210	210
120	120	170	170	170	200
25	35	35	35	35	40
910	910	1230	1230	1230	1200
650	650	840	840	840	1000
2050	2050	2250	2250	2250	2880
1200	1250	1460	1450	1490	1640
1128	1150	1300	1230	1275	1480
945	935	1080	1080	1080	1340
46	46	46	68	68	90
S20	S25	S25	S25	S25	S25
S16	S16	S16	S16	S16	S16



Truck mounted crane grabs

Adapter plate

Suitable for any crane as a result of the removable bushing.

The bushing is offset to ensure the grab hangs perfectly straight.

Exchangeable wear blades

The cutting edges are interchangeable and reversible.

The entire scales including the cutting edges are made of high-quality Hardox.

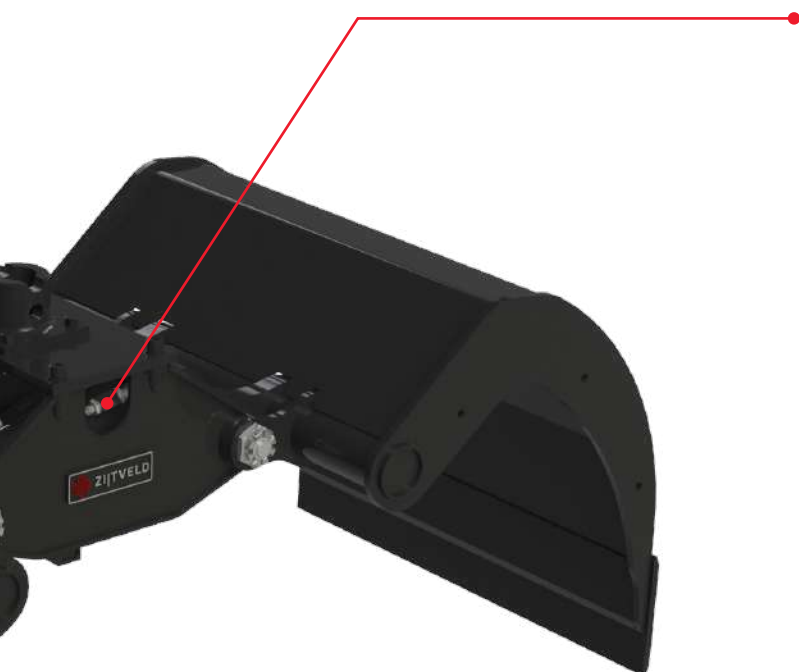
The entire shells including the exchangeable wear blades are made of high-quality Hardox.



Application

Our truck mounted crane grabs are versatile grabs suitable for all truck mounted cranes. They use the advanced technology of demolition and sorting grabs, but are distinguished by their light weight and compact, foldable design, making them easy to store and not a hindrance in transport.

With a massive grab volume, truck mounted crane grabs are ideal for moving large loads. They are available in a wide range of variants, so there is always a suitable grab for your crane. The ALK 220 model is specially designed to pick up steel concrete plates without additional fittings., making the grab even more versatile.



Cylinders

Double cylinders as standard, these ensure optimal force distribution.

Cylinders with internal end damping; so no use of external stop lugs.

The special cylinder configuration reduces movement, minimizing wear of the hydraulics.

Efficiency

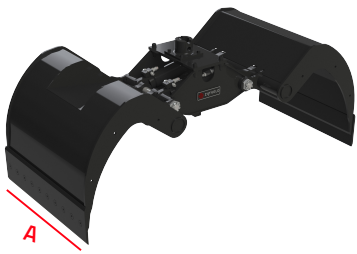
Low weight for more efficient use.

Easily foldable for transport and storage.

Huge grab volume for larger loads.

With strong performance and wide compatibility, these truck mounted loader cranes are perfect for a variety of jobs in various industries.

Truck-mounted crane grabs

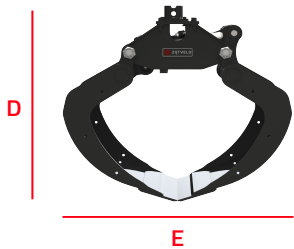
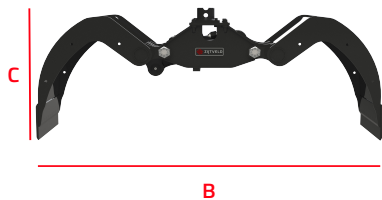


		ALK160W-80-2A	ALK160W-80-2	ALK160W-90-2A	ALK160W-90-2	ALK160W-100-2A
Weight	kg	320	320	340	340	350
Operating pressure max.	bar	250	250	250	250	250
Shell width A	mm	800	800	900	900	1000
Width opened B	mm	1630	1630	1630	1630	1630
Height opened C	mm	780	780	780	780	780
Height closed D	mm	950	950	950	950	950
Width closed E	mm	1270	1270	1270	1270	1270
Capacity	ltr	525	500	575	550	625
Closing force	kn	20	20	20	20	20

		ALK180W-80-2A	ALK180W-80-2	ALK180W-90-2A	ALK180W-90-2	ALK180W-100-2A
Weight	kg	365	365	405	405	415
Operating pressure max.	bar	250	250	250	250	250
Shell width A	mm	800	800	900	900	1000
Width opened B	mm	1880	1880	1880	1880	1880
Height opened C	mm	760	760	760	760	760
Height closed D	mm	1000	1000	1000	1000	1000
Width closed E	mm	1107	1107	1107	1107	1107
Capacity	ltr	445	420	495	470	545
Closing force	kn	24	24	24	24	24

		ALK220W-80-2A	ALK220W-80-2	ALK220W-90-2A	ALK220W-90-2	ALK220W-100-2A
Weight	kg	440	460	460	480	480
Operating pressure max.	bar	250	250	250	250	250
Shell width A	mm	800	800	900	900	1000
Width opened B	mm	2200	2200	2200	2200	2200
Height opened C	mm	855	855	855	855	855
Height closed D	mm	1215	1215	1215	1215	1215
Width closed E	mm	1390	1390	1390	1390	1390
Capacity	ltr	660	660	740	740	830
Closing force	kn	28	28	28	28	28

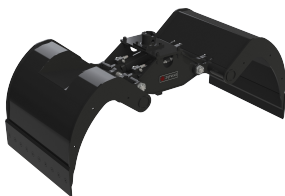
Truck-mounted crane grabs with the letter A in the product name are grabs with a recess.



	ALK160W-100-2	ALK160W-120-2A	ALK160W-120-2
	350	380	380
	250	250	250
	1000	1200	1200
	1630	1630	1630
	780	780	780
	950	950	950
	1270	1270	1270
	600	775	750
	20	20	20

Standard models

A models



	ALK180W-100-2	ALK180W-120-2A	ALK180W-120-2
	415	450	450
	250	250	250
	1000	1200	1200
	1880	1880	1880
	760	760	760
	1000	1000	1000
	1107	1107	1107
	520	645	620
	24	24	24

	ALK220W-100-2	ALK220W-120-2A	ALK220W-120-2
	510	510	510
	250	250	250
	1000	1200	1200
	2200	2200	2200
	855	855	855
	1215	1215	1215
	1390	1390	1390
	830	985	985
	28	28	28

Multi grabs

360° Hydraulic rotation

Maximum maneuverability with full 360° hydraulic rotation.

Highly suitable for the toughest tasks as a result of the robust slewing ring.

Advanced and sturdy slewing ring system that protects the slewing ring by keeping the grease clean and securely contained within the system.

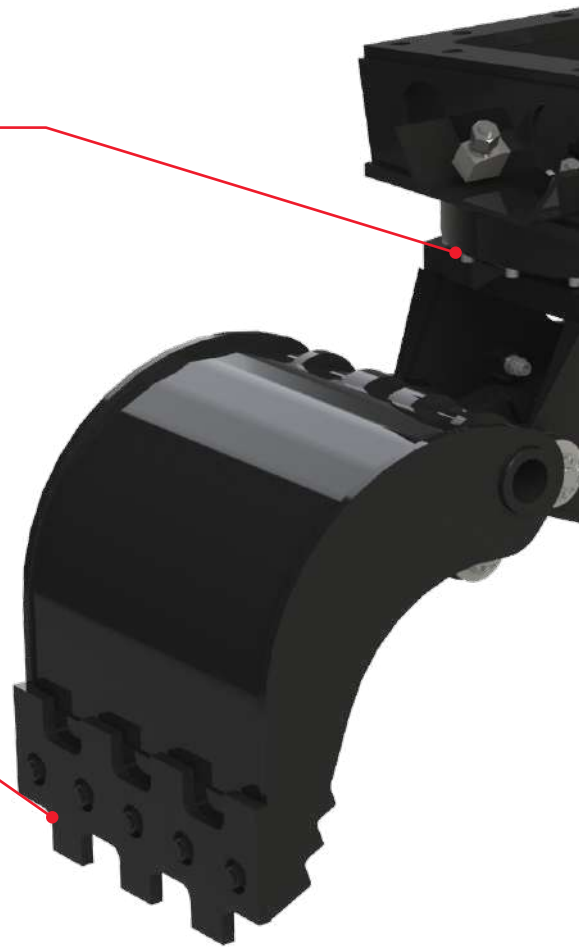
Exchangeable wear blades

All multi grabs feature serrated exchangeable wear blades.

Cutting edges vervangen voor exchangeable wear blades.

Countersunk blade bolts prevent material buildup.

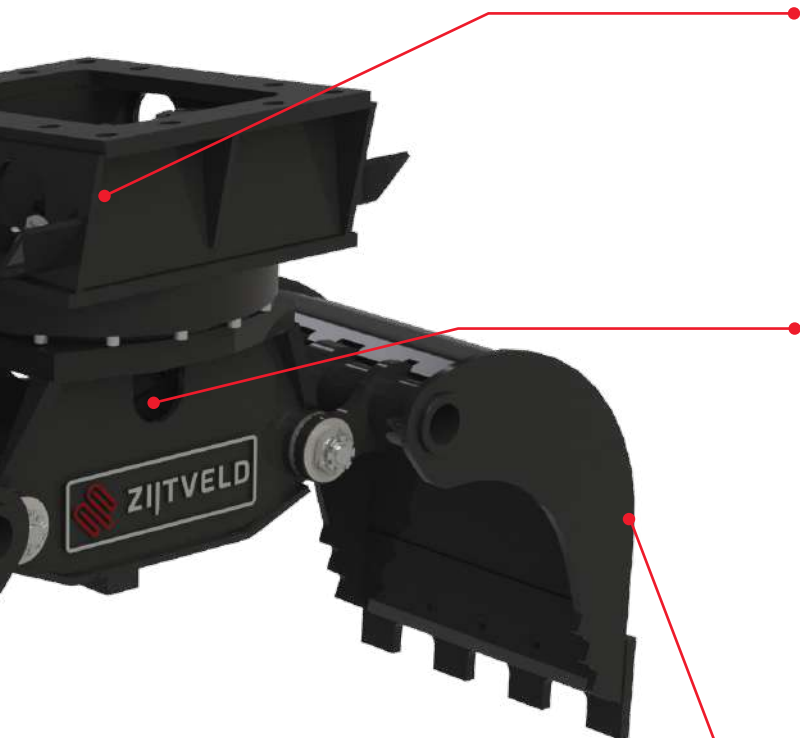
The entire shells including the exchangeable wear blades are made of high-quality Hardox.



Application

Our multi grabs are perfect for picking up rocks and rocky materials.

They are equipped with interchangeable toothed under-screw blades (from MU150-D) and double hydraulic motors (from MU603-D) for optimum power distribution.



Hydraulic motors

Starting from model MU603-D, dual hydraulic motors are standard, ensuring optimal power distribution on the slewing ring.

Cylinders

Starting from model MU804-D, dual cylinders are standard, ensuring optimal power distribution.

Cylinders with internal end damping: so no use of external stop lugs.

The special cylinder configuration reduces movement, minimizing wear of the hydraulics.

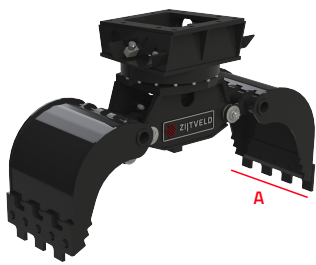
Extra-thick side plates

Equipped with extra-thick side plates to withstand heavy-duty use and harsh conditions.

Automatic lubrication system

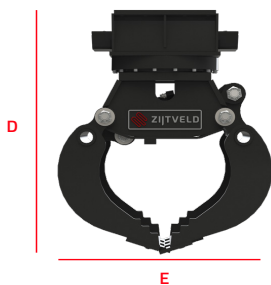
From model MU804-D onwards, the grabs are available with the automatic lubrication system (see page 38).

Multi grabs



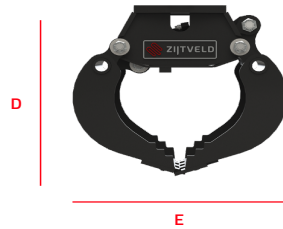
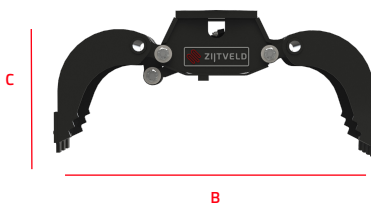
		MU100-D	MU150-D	MU200-D	MU400-D	MU450-D	MU452-D
Weight class excavator	ton	1-2	1,5-3	2,5-5	4-6	5-8	6-11
Weight	kg	80	135	230	350	400	425
Operating pressure max.	bar	300	300	300	300	300	320
Operating pressure rotation min.	bar	170	170	170	190	190	190
Operating pressure rotation max.	bar	210	210	210	210	210	210
Oil flow max.	l/min.	30	25	35	40	50	70
Oil flow rotation max.	l/min.	5	10	10	12	12	15
Shell width A	mm	310	370	400	500	600	600
Width opened B	mm	750	750	1160	1400	1500	1550
Height opened C	mm	670	670	770	880	930	1055
Height closed D	mm	700	690	805	1025	1065	1200
Width closed E	mm	490	550	780	850	885	885
Capacity	ltr	35	58	80	125	170	140
Closing force	kn	7	15	20	23	24	24
Hose connection pinch function	-	L10	S12	S12	S12	S12	S16
Hose connection swivel function	-	L10	L10	L10	L10	L10	S12

		MU100-ZD	MU150-ZD	MU200-ZD	MU400-ZD	MU450-ZD	MU452-ZD
Weight class excavator	ton	1-2	1,5-3	2,5-5	4-6	5-8	6-11
Weight	kg	55	95	190	280	330	355
Operating pressure max.	bar	300	300	300	300	300	320
Oil flow max.	l/min.	30	25	35	40	50	70
Shell width A	mm	310	370	400	500	600	500
Width opened B	mm	750	750	1160	1400	1500	1550
Height opened C	mm	670	700	850	950	1000	1100
Height closed D	mm	700	690	805	1025	1065	1200
Width closed E	mm	490	550	780	850	885	885
Capacity	ltr	35	58	80	125	170	140
Closing force	kn	7	15	20	23	24	24



MU502-D	MU603-D	MU804-D	MU1204-D
7-12	10-16	12-20	17-28
620	800	1020	1460
350	350	350	350
190	190	190	190
210	210	210	210
90	100	120	160
15	25	25	35
600	700	700	900
1800	1800	1950	2100
1100	1200	1245	1430
1250	1330	1480	1620
1050	1065	1170	1300
300	300	440	640
30	35	46	68
S16	S20	S20	S25
S12	S16	S16	S16

MU502-ZD	MU603-ZD	MU804-ZD	MU1204-ZD
7-12	10-16	12-20	17-28
520	560	795	1160
350	350	350	350
90	100	120	160
600	600	700	900
1800	1800	1950	2100
1150	1200	1300	1500
1250	1330	1480	1620
1050	1065	1170	1300
300	300	440	640
30	35	46	68



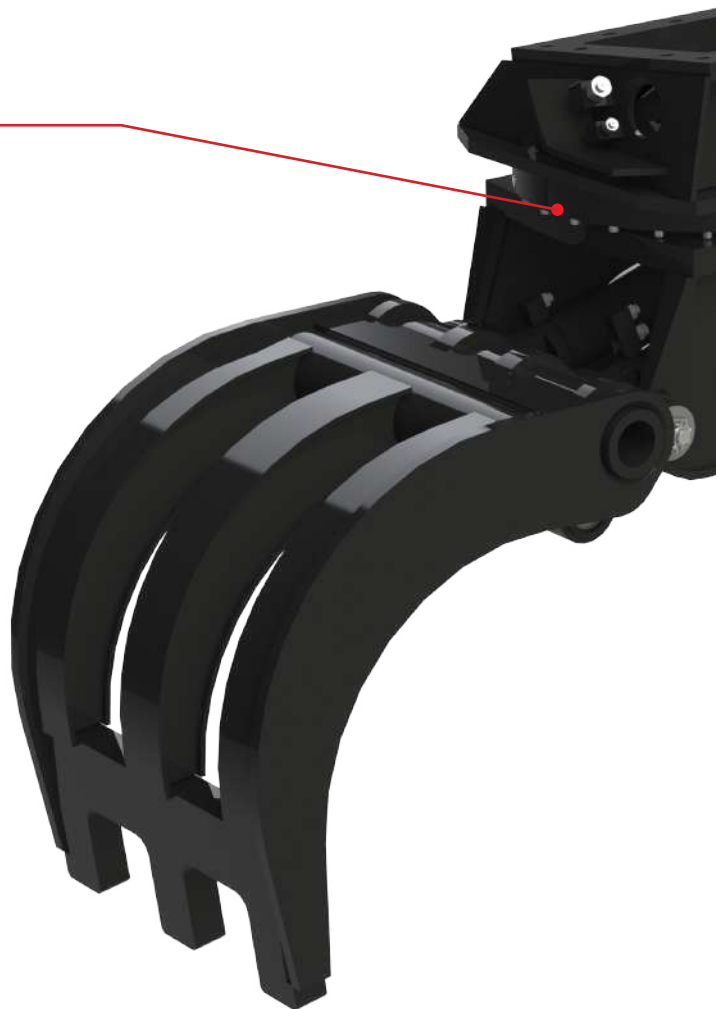
Stone grabs

360° Hydraulic rotation

Maximum maneuverability with full 360° hydraulic rotation.

Highly suitable for the toughest tasks as a result of the robust slewing ring.

Advanced and sturdy slewing ring system that protects the slewing ring by keeping the grease clean and securely contained within the system.



Application

Our stone grabs are the perfect solution for picking up heavy stones and rocks. Moreover, stone grabs have a relatively low weight to volume ratio, ensuring optimum performance in heavy-duty applications.



Hydraulic motors

Dual hydraulic motors as standard for optimum power distribution on the slewing ring.

Cylinders

Dual cylinders are standard, ensuring optimal power distribution.

Cylinders with internal end damping: so no use of external stop lugs.

The special cylinder configuration reduces movement, minimizing wear of the hydraulics.

Stone grabs



		S3000-D SG	S4000-D SG	S5000-D SG
Weight class excavator	ton	30-50	40-70	45-100
Weight	kg	3980	5500	6880
Operating pressure max.	bar	350	350	350
Operating pressure rotation min.	bar	190	190	190
Operating pressure rotation max.	bar	210	210	210
Oil flow max.	l/min.	200	250	250
Oil flow rotation max.	l/min.	35	40	60
Shell width wide shell A	mm	1500	1460	1470
Shell width small shell A	mm	1114	1094	1104
Width opened B	mm	2340	2510	2620
Height opened C	mm	1860	2210	2540
Height closed D	mm	2230	2300	2650
Width closed E	mm	1640	1800	2020
Capacity	ltr	1250	1350	1450
Closing force	kN	90	110	130



Combi Cutters

360° Hydraulic rotation

Maximum maneuverability with full 360° hydraulic rotation.

Highly suitable for the toughest tasks as a result of the robust slewing ring.

Advanced and sturdy slewing ring system that protects the slewing ring by keeping the grease clean and securely contained within the system.

Lightweight

Despite its power, the Combi Cutter is lightweight, ensuring better manoeuvrability and increased efficiency.



Application

Our combi cutters are designed for demolition and reduction of concrete structures. They are also highly effective at cutting steel structures on demolition sites. These cutters deliver powerful performance, making them essential for demanding demolition tasks.



Interchangeable blades and teeth

The Combi Cutter is equipped with interchangeable blades and teeth, making replacement in case of wear easy.

Robust cutting force

The Combi Cutter boasts impressive cutting power and effortlessly cuts concrete, both with and without reinforcement.

Solid and reliable

The Combi Cutter is robustly built, has a sturdy construction and is extremely reliable, even in the toughest conditions.

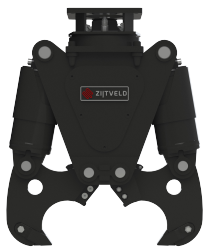
Easy to use

The Combi Cutter is user-friendly and ideal for both small and medium-sized excavators.

Combi Cutters



		CC350 WT	CC650 WT	CC950 WT	CC8000
Weight class excavator	ton	2-4t	5-14t	9-16t	60-100
Weight	kg	300	580	780	7500
Operating pressure max.	bar	250	350	350	250
Operating pressure rotation min.	bar	180	190	190	190
Operating pressure rotation max.	bar	200	210	210	210
Oil flow max.	l/min.	50	150	210	800
Oil flow rotation max.	l/min.	10	20	20	60
Jaw width	mm	50	60	60	2091
Jaw opening max.	mm	410	500	690	2024
Height	mm	1000	1400	1800	3441
Force at blade	kN	1000	1200	2400	-
Force in the back of the jaw	kN	820	900	1500	-
Force at the middle teeth	kN	n.v.t.	n.v.t.	920	4800
Force at tips	kN	315	470	645	2400
Hose connection pinch function	-	S12	S16	S16	S16
Hose connection swivel function	-	L10	S12	S12	S12



Available options

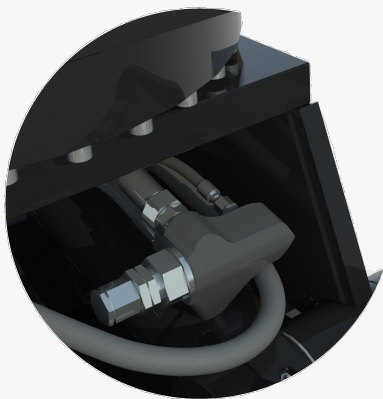
Every job requires the right equipment. That is why we offer various options to fully tailor the grab to your work.

Whether you are doing demolition work, earthmoving or tree felling, we have the right solution.

Our available options:

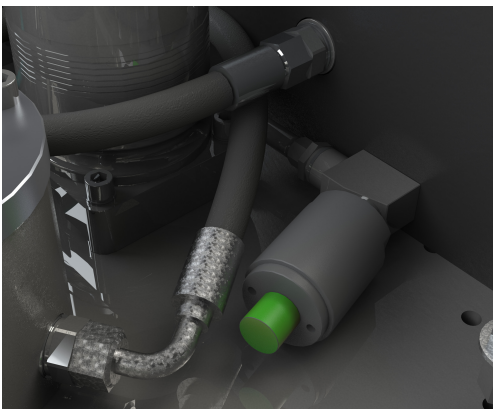
- Load holding valve
- 5-channel central oil distributor
- Automatic lubrication system
- Accumulators
- Additional hydraulic motors
- Closed shell panels

*Other options, by arrangement.



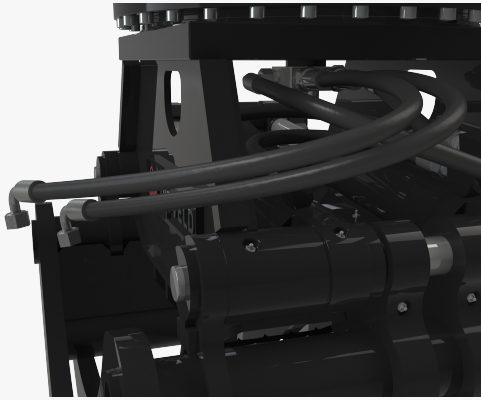
Load holding valve

This function ensures that the grab load is held without having to keep the lever activated. This increases safety and precision during work. If the pressure in the system drops - for example, due to a hose break or malfunction - the grab can open unintentionally. With the load holding function, this does not happen. This valve holds the oil in the system, keeping the grab closed until the operator deliberately opens it.



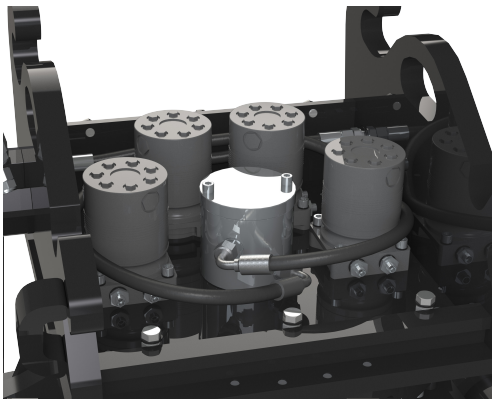
Accumulators

Accumulators absorb peak hydraulic pressures, extending the life of the grab and reducing wear and tear on the hydraulic system. They act as a shock absorber, with the oil expanding in a sealed, gas-filled chamber. This extends the life of the hydraulic motors and the reliability of the system.



5-channel central oil distributor

Specially designed for tree grabs that need an additional function, such as a saw module. The 5-channel pass-through allows easy and quick connection.



Additional hydraulic motors

For tree grabs used in tough conditions, additional hydraulic motors provide more power and stability. This reduces wear and increases control when picking up heavy or long logs.



Automatic lubrication system

Save time and maintenance costs with our automatic lubrication system. Manual lubrication is no longer necessary, allowing you to work more efficiently and not miss maintenance moments. The system works completely mechanically, without special tools or gas cartridges, making it unique of its kind. Want to know more? Read on page 38 for a detailed explanation of the automatic lubrication system.



Closed shell panels

Our grabs are fitted with open mesh plates as standard, but closed mesh plates are also an option. This reduces the loss of small material and improves grip on finer material. This is ideal for demolition work, where smaller debris should not fall out of the grab. Closed shell panels also help move loose soil or gravel more efficiently in earth moving.

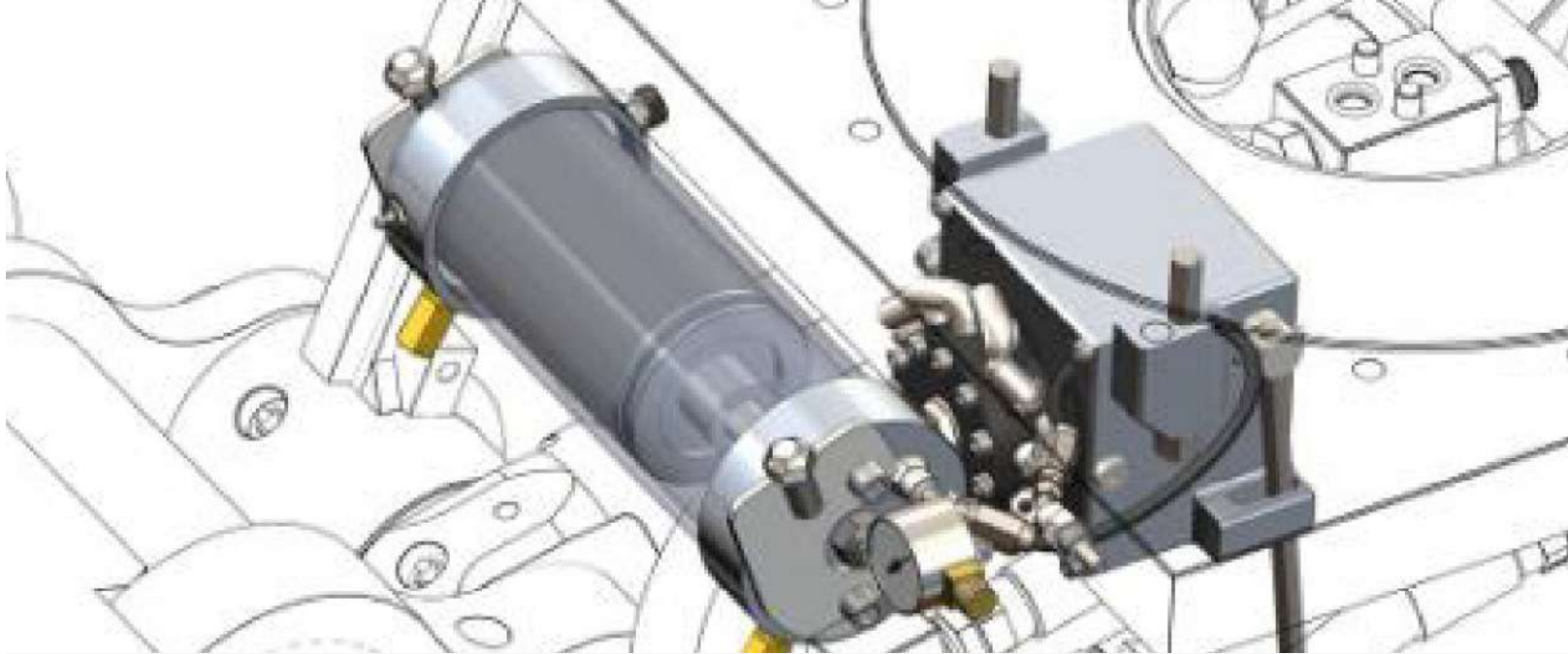
Automatic lubrication system

How it works

Our fully mechanical lubrication system is designed to automatically apply a small amount of grease to the grabs their lubrication points during opening and closing. After every three cycles of opening and closing, another lubrication point is lubricated.

This ensures that each lubrication point receives exactly the right amount of lubricant, resulting in constant and even lubrication.





Benefits of the lubrication system

Reliable

Our fully mechanical system does not rely on electronics or external power supplies, which increases reliability. The lubrication hoses are integrated in the gripper's construction and protected by special caps, minimising the risk of damage.

User-friendly

With ample grease storage, the system is designed for long-term use. Where normally daily lubrication is required, our lubrication system provides enough capacity for 120-160 working hours without refilling.

Sustainable

The system accurately doses the lubricant, preventing waste and reducing lubricant consumption. This contributes to more sustainable grab operation.

Longer lifespan

Thanks to regular lubrication, the pivot points are better protected from wear, which significantly extends the life of the grab.

Additional security

In the unlikely event of a breakdown, the grab remains well lubricated thanks to traditional grease nipples that are always available. This keeps the grab operational even in unexpected situations.

This automatic lubrication system is designed with ease of use and reliability in mind, so that your grab always performs at its best.

Saving on maintenance costs

Because the grab is constantly lubricated, there is less wear and therefore less maintenance required.

Available adaptors

Always the right adaptor for your excavator.

No machine is the same. That’s why we offer a wide range of adapter systems, ensuring our grabs perfectly fit your equipment. Regardless of the task, we make sure you can connect without hassle and without the need for (heavy) adapter plates.

From CW quick couplers and hole patterns to direct pin suspensions and mechanical quick change systems such as Open-S, we supply the right system for every crane.

We also offer advanced, fully integrated hydraulic systems such as OilQuick, Steelwrist, Likufix, EC-Oil and Variolock, which allow you to switch between different grabs quickly and efficiently.

Our available systems*:

- Hole patterns
- OilQuick systems
- Likufix systems
- CW quick couplers
- Lehnhoff systems
- Mechanical quick couplings
- Direct adaptors
- Steelwrist systems
- Engcon systems

*Other systems, on request.

Not sure which adapter you need?

Our team will be happy to advise you on the best solution for your machine and work. With our wide range of systems, we make sure your grab fits perfectly and delivers maximum performance.



Hole patterns

Our hole patterns ensure a perfect connection between the quick-change system and the grab. You can screw your desired topplate onto our hole pattern.



CW quick couplers

The CW quick couplers are the most widely used quick switches in the Benelux. By using this system, you change the grab quickly and easily. This saves time, reduces costs and increases your productivity.



Direct adaptors

A direct pin suspension attaches directly to the boom. If you never want to change grippers and save weight, opt for this solution.



OilQuick systems

Thanks to the automatic hydraulic clutch, you change quickly and safely without manual intervention. This saves you precious time.



Lehnhoff systems

For your Lehnhoff system, we offer a grabs that fits your needs seamlessly, ensuring reliability and optimum performance.



Steelwrist systems

Thanks to the automatic hydraulic clutch, you change quickly and safely without manual intervention. This saves you precious time.



Likufix systems

For your Likufix system, we have the ideal gripper, whether hydraulic or mechanical. This ensures a high degree of comfort, safety and productivity.



Mechanical quick couplings (Open-S)

A gripper suspension in which usually two welded pins form the base, in practically every shape and size known to the market.



Engcon systems

We can supply the perfectly fitting gripper for your Engcon system, whether hydraulic or mechanical. This offers you comfort, safety and maximum efficiency.







English

www.zijtveld.com

Zijtveld Grabs

De Boomgaard 1

+31 (0) 35 656 3359

1243 HV 's-Graveland (NL)

info@zijtveld.com



ZIJTVELD