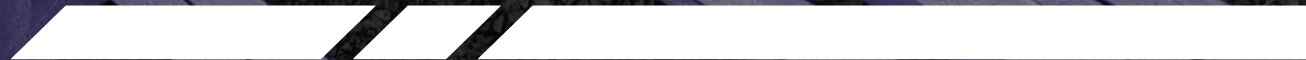


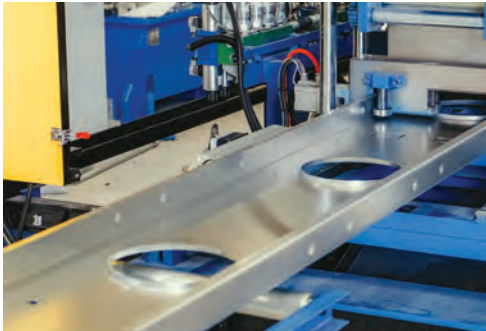
— Framing Systems

Capability Statement, Floor and Framing Division

Con-form[®]
GROUP
Making it *Easy*



A Solid Foundation



The Name You Can Trust

For more than two decades Con-form Group – a privately owned Australian company based at Bathurst NSW – has been a market leader in the design-certification-manufacturing-installation of highly innovative steel products for the Australian construction industry.

A number of these products have been revolutionary industry-firsts which have made conventional materials and methods obsolete.

The Floor & Frame Division is part of a product portfolio which also includes mechanical equipment platforms, elevated access systems, acoustic walls, visual barriers and architectural facades.

With our vast knowledge of creating custom load-bearing and structural systems it was a natural expansion to also specialise in the design and manufacturing of light gauge steel frames for floors, walls and ceilings.

Customers include Microsoft, Google, Amazon, the nation's A-list of construction companies, state governments, Woolies, Coles and Aldi.

The Team You Can Trust

To ensure that you are professionally serviced and supplied throughout the life of your project, Con-form Group features a complete suite of highly trained in-house teams.

- > Research & Development
- > Product Development
- > Industrial Design
- > Engineering
- > Certification
- > Construction
- > Production
- > Quality Control
- > Transport
- > Installation

Together, we have the capabilities to deliver the largest framing projects.

The Technology You Can Trust

Our fully-equipped Manufacturing Facility occupies multiple buildings across two sites. It features a comprehensive range of world-class computerised and automated manufacturing equipment capable of outputting large capacities to meet every project requirement and workflow deadline.

This technology, combined with expansive frame assembly areas, allows for rapid turnaround.

By manufacturing every component on-site we can easily maintain the highest levels of Quality Control throughout the production and prefabrication processes.

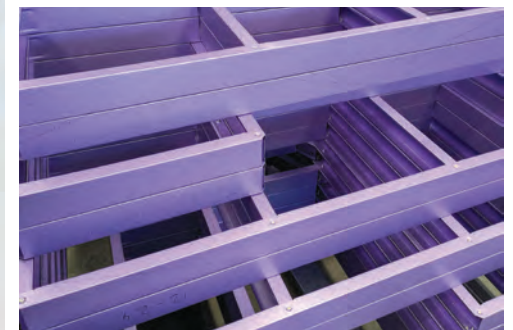
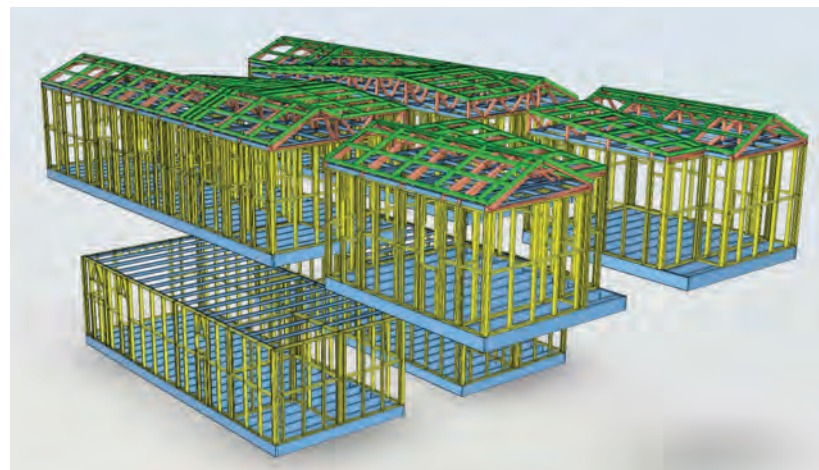
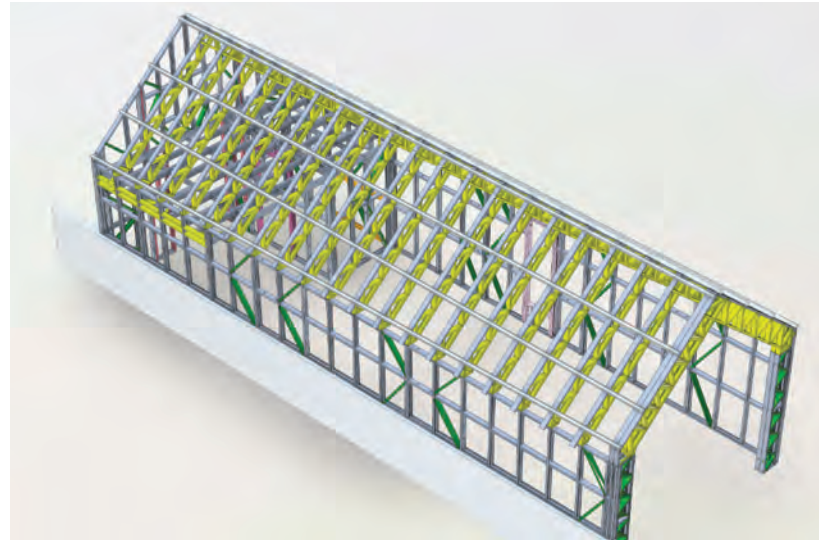
- > High rates of supply
- > Large reach of service

DiamondSteel© Frames

- > External wall
- > Internal wall
- > Mezzanine (multi-level)
- > Roof truss
- > Wall enveloping

EasyFloor© Chassis

- > Subfloor (modular, transportable)

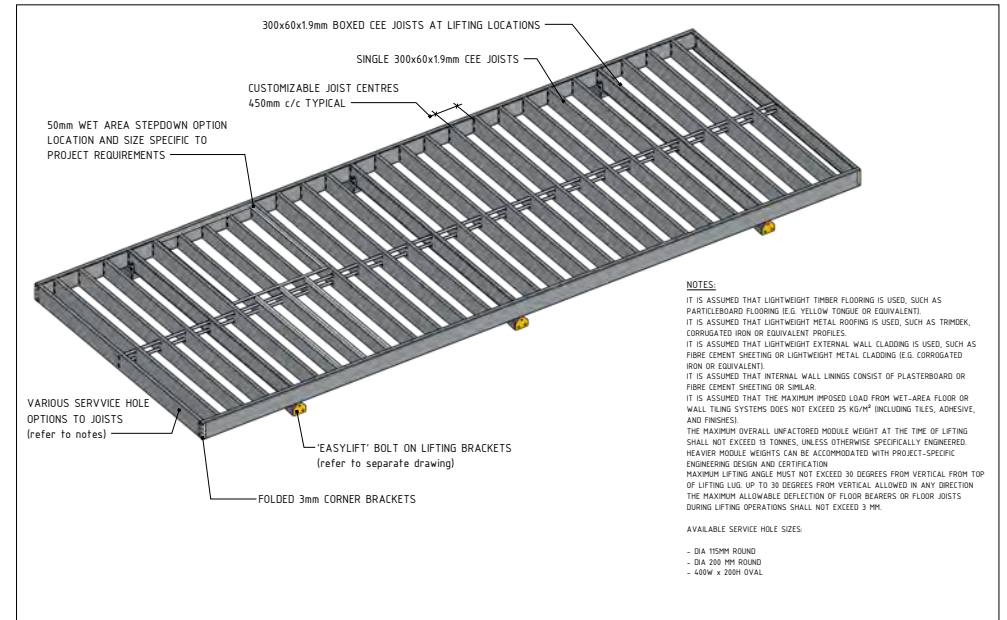


EasyFloor© Chassis

Con-form Group's EasyFloor© chassis is designed and certified as a subfloor for transportable buildings and modular homes...

as well as a mezzanine floor for commercial and industrial buildings... and it is also purpose-built for multi-level flooring.

Manufactured in-house from durable light gauge steel, EasyFloor features a combination of ultra-lightness and superior strength.

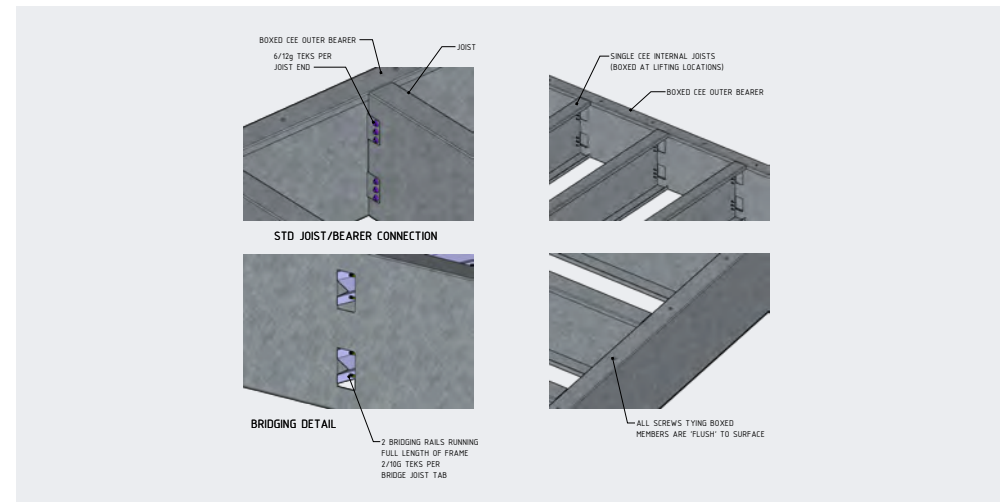


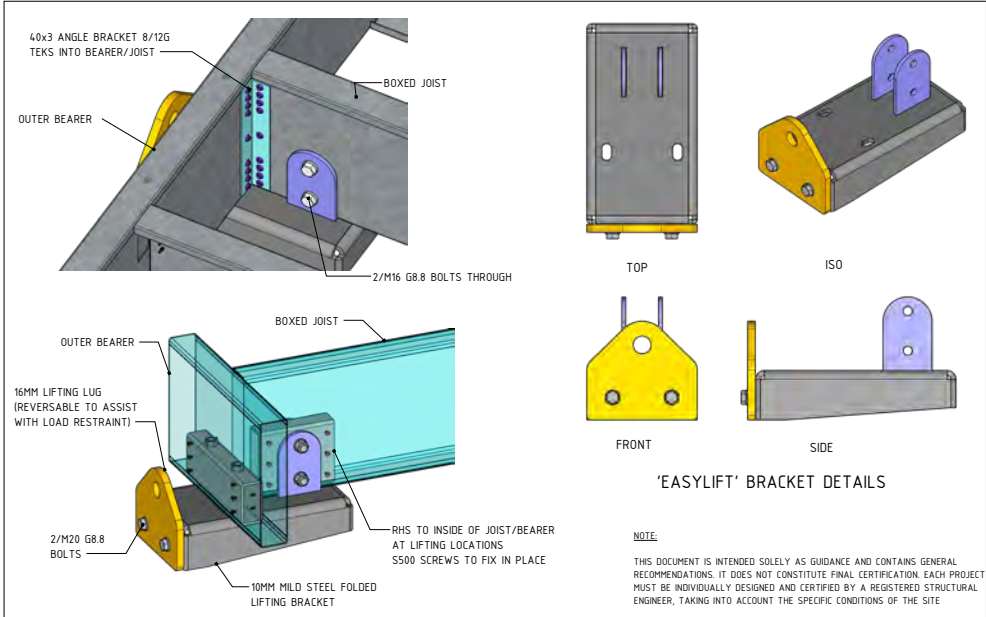
PROJECT:	'EASYFLOOR' Modular Floor System - Standard Details	Con-form GROUP	Con-form Group PTY LTD 19 Corporation Avenue BURWOOD NSW 2195 1800 882 410 sales@con-formgroup.com.au	SCALE: ALL DIMENSIONS ARE IN MILLIMETERS UNLESS OTHERWISE NOTED. IF IN DOUBT, ASK. 2. THE CONTENTS OF THESE DOCUMENTS ARE COPYRIGHT. USE OF ANY PART OF THESE DOCUMENTS WITHOUT PRIOR WRITTEN PERMISSION FROM CON-FORM GROUP MAY INFRINGE COPYRIGHT.	JOB No:	
DRAWING TITLE:	GA DRAWING	STATUS:	ISSUANCE ONLY - NOT FOR CONSTRUCTION		DRAWN:	JRB
					CHECK:	ELR
					DATE:	12/01/25

PROJECT NAME	'EASYFLOOR'
PROJECT DETAILS	STANDARD SYSTEM DETAILS

DRAWING LIST		
DRAWING NO.	DRAWING TITLE	REV.
001	GA DRAWING	REV.3
002	TYPICAL SINGLE FLOOR JOIST AND JOIST CONNECTION DETAILS	REV.3
003	TYPICAL LIFTING BRACKET TO FRAME CONNECTIONS	REV.3

CERTIFYING ENGINEER
ENGINEERING DESIGN & CERTIFICATIONS Ali Bataghva. BEngc MEngc (Civil) MBA MIEAust
RBP
QLD: 19725 VIC: PE0005025 NSW: PRE0001336 TAS: 353873904 NT: 360751E5





PROJECT:	'EASYFLOOR' Modular Floor System - Standard Details		Con-form Group PTY LTD 19 Corporation Avenue Baulmurst, NSW 2195 1300 882 419 sales@con-formgroup.com.au	SCALE: 1. ALL DIMENSIONS ARE IN MILLIMETERS UNLESS OTHERWISE NOTED. IF IN DOUBT, ASK. 2. THE CONTENTS OF THESE DOCUMENTS ARE COPYRIGHT. USE OF ANY PART OF THESE DOCUMENTS WITHOUT PRIOR WRITTEN PERMISSION FROM CON-FORM GROUP MAY INFRINGE COPYRIGHT.	JOB No.	
DRAWING TITLE:	TYPICAL LIFTING BRACKET TO FRAME CONNECTIONS		STATUS:	SUBSTANCE ONLY - NOT FOR CONSTRUCTION	DRAWN:	RB
				CHECK:	ELB	
				DATE:	12/10/25	

D 103



EasyLift© Lug System

EasyLift© is a proprietary lifting system which has been rigorously tested to far exceed the rigours of transportable buildings.

This unique engineer-certified design negates the need for spreader bars to be placed under the floor frame when it is lifted. The lugs are removable and can also be rotated and used to secure the load for transit.

Our in-house Engineering and Product Development teams subjected the steel lugs to 3D finite element analysis and extreme physical load tests.



EasyLift was subjected to weights far in excess of what is experienced in the real world to determine potential stress points and load limits.

The EasyLift lugs are produced and attached to each EasyFloor in our Manufacturing Centre of Excellence to ensure the highest Quality Control standards.



PROJECT

Armadale Park Penthouse Development

SOLUTION

Acoustic+ Wall



PROJECT

Warragul

SOLUTION

EasyMech MR
Surface-Mount Platform
& braceless LouvreWall



PROJECT

555 LaTrobe Street,
Melbourne

SOLUTION

Acoustic+ Wall





PROJECT
Gables Town Centre

SOLUTION
Span+ Rafter-Mount Platform



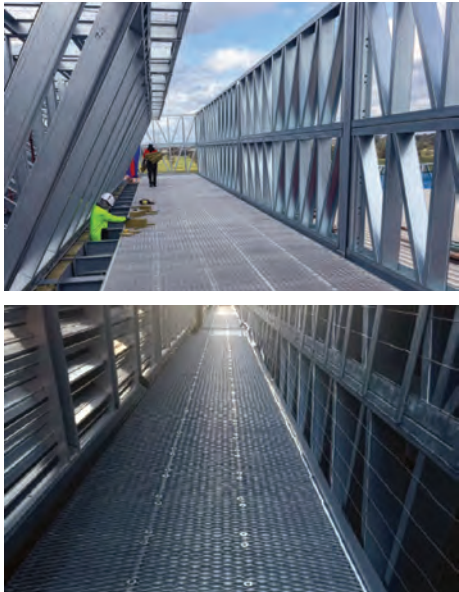
PROJECT
Preston

SOLUTION
Span+ Rafter-Mount Platform
& LouvreWall



PROJECT
Kemps Creek Data Centre

SOLUTION
Span+ Rafter-Mount Platform



PROJECT
Kemps Creek Data Centre

SOLUTION
Raised Walkway



Superior Steel

G550 ZINCALUME and G450 GALVABOND hot-dipped aluminium/zinc alloy-coated Light Gauge Steel are proven in the construction industry. They have one of the highest strength-to-weight ratios of any conventional building product and we back them with a 50-year warranty. They are our preferred materials for both load-bearing and non load-bearing frames.

They are resistant to:

- > Bending
- > Corrosion
- > Expansion
- > Fire
- > Moisture & mold
- > Shrinkage
- > Termites
- > Warping
- > Water

Each floor frame is custom designed to suit the individual requirements of your project specifications. Proprietary-designed C- and box-section joists, bearers and beans combine to form an integrated modular system.

Sustainable Steel

Con-form Group's light gauge steel has higher recycled steel content and better production efficiencies than other types of steel. It is more environmentally friendly than timber or aluminium.

When it comes to sustainability our material is a winner – it arrives from the mill with close to 100% recycled steel content and it has better (less energy consumption, lower emissions) production efficiencies than other types of building materials.

There is almost zero wastage because we accurately measure and cut frames to the millimetre. And, at the end of its life cycle as a frame system it can be recycled and used for any type of product from automotive parts to white goods. It's good to be green.



It's All About Speed

Rapid production turnaround. Prompt delivery. Fast onsite installation.

Con-form Group is geared up for high-speed high-capacity output. The result of precision engineered designs, automated manufacturing technology, 'lean' procedures and highly experienced personnel.

Frames arrive to site on-time via our dedicated delivery team and, in the case of our wall and ceiling frames, the prefabricated sections can be instantly installed in a matter of days – compared to weeks for conventional stick-form methods. Fewer trades. Less hours.

Customer Assurance

Our wall/ceiling frames are manufactured from (purple!) G550 hot-dipped aluminium/zinc alloy-coated Light Gauge Steel which is strong, durable and reliable. Floor frames use G450 GALVABOND Light Gauge Steel, a premium hot-dipped material with high structural properties and a self-healing zinc surface for long term durability. They are ideal for a multitude of single and multi-storey commercial, industrial and residential applications.

- > Products comply with Australian Standards
- > Comply with NASH standards
- > 50-year warranty
- > Comprehensive Safety Compliance (public and product liability insurance @ \$20,000,000 + professional indemnity insurance @ \$10,000,000)
- > Australian Owned
- > Australian Made at our Bathurst based Manufacturing Facility (manufactured in accordance with ISO9001 Quality Management Systems and our own stringent Quality Control standards)

This is our guarantee to you.



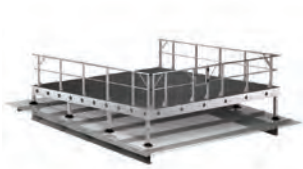
Product Overview

Making it easy every step of the way



EasyMech **MR**®

Purlin-Mounted
HVAC+R Deck



Span+ **Platform**®

Rafter-Mounted
HVAC+R Deck



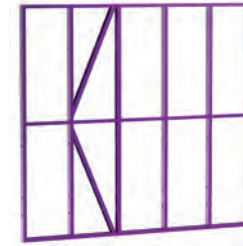
EasyMech **CR**®

Concrete Mounted
HVAC+R Deck



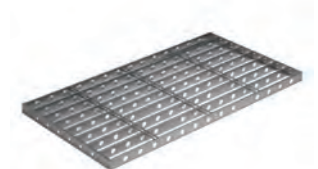
Con-form **Access**®

Roof Access Systems &
Walkways



Con-form **Frames**®

Wall Enveloping &
Internal Walls & Ceilings



Con-form **Floors**®

Mezzanine &
Sub-Floor Frames



Conceal **Wall**® &
Conceal **AeroWall**®

Premium Visual Barriers
with Airflow options



Louvre
Wall®

Visual Barriers
with Airflow



Acoustic+
Wall®

Tunable Acoustic
Visual Barriers



Acoustic+
LouvreWall®

Acoustic Visual Barriers
with Airflow



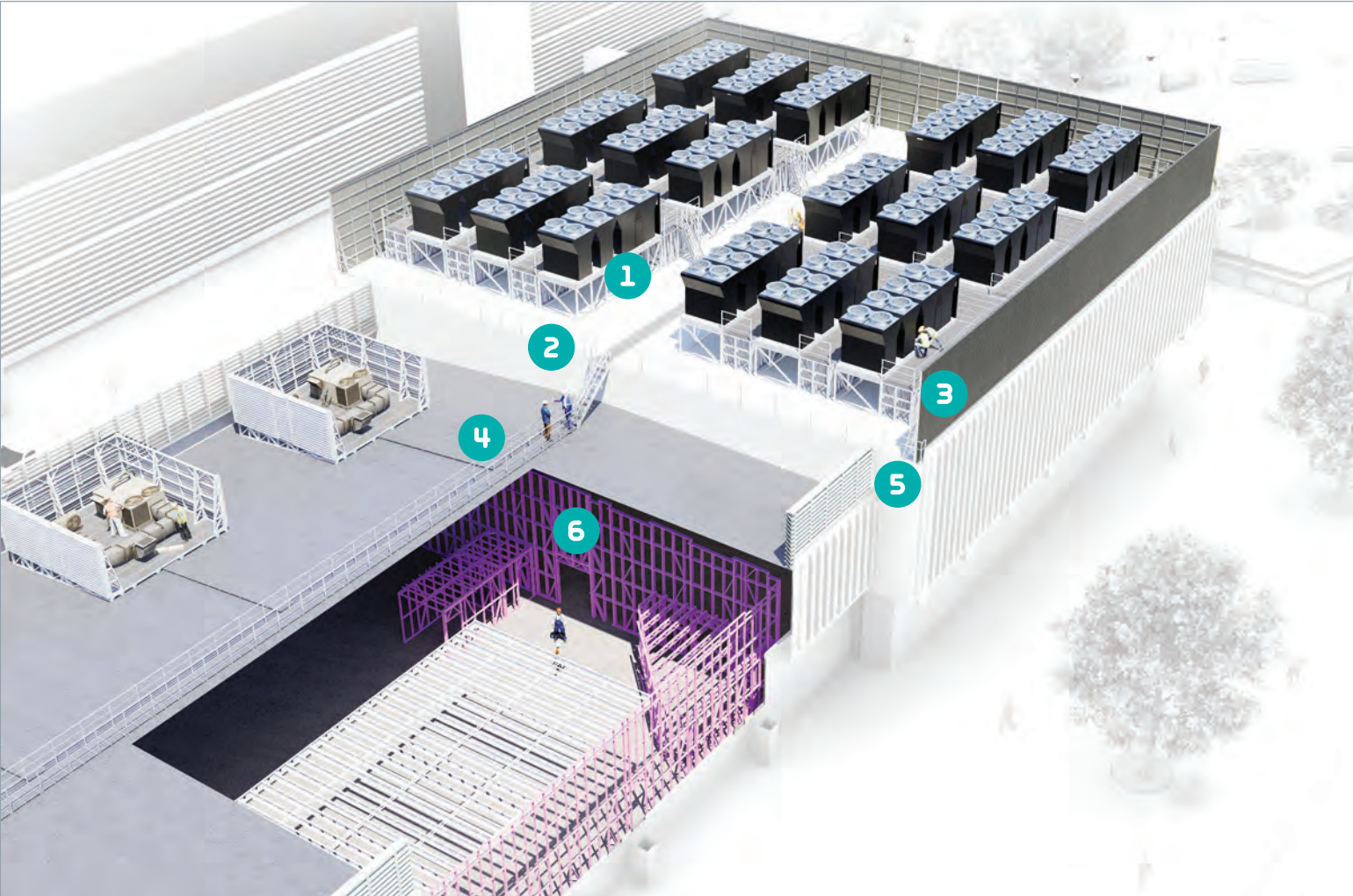
Acoustic+
UltraWall®

Premium Acoustic
Visual Barriers



Screen to **Roof**®

Screen Systems
Directly Mounted to Roof



- 1 Plant Platforms
- 2 Stairs & Access Systems
- 3 Raised Walkway Systems
- 4 Walkway Systems
- 5 Acoustic & Architectural Systems
- 6 Internal Framing & Flooring

Con-form[®] GROUP

Making it *Easy*



Reasons to select a Con-form Frame

Experience dramatic gains in accuracy, capacity, quality and speed.

- > Customisation
- > Capacity
- > Dimensional Accuracy
- > Durability & Strength
- > Prefabrication
- > Quality Control
- > Speed of Production
- > Sustainability
- > Warranty

Con-form Group Capability Brands

