

— Con-form Flooring

Flooring Systems

Con-form[®]
GROUP
Making it Easy

Con-form Flooring[®]

Flooring Systems



The Name You Can Trust

For more than two decades, Con-form Group has been an innovative leader in the design-certification-manufacturing-installation of steel products for the Australian construction industry. You can find our products in data centres, government buildings, schools and universities, childcare centres, aged care facilities, retail warehouses and shopping centres across the nation. Our customers include Microsoft, Google, Amazon, the nation's A-list construction companies, state governments, Woolies, Coles and Aldi.

Our Manufacturing Centre of Excellence at Bathurst features highly skilled Research & Development, Industrial Design, Engineering, Product Development, Product Testing and Production teams, supported by custom-built state of the art manufacturing equipment.

We have the capacity to meet every framing project requirement and workflow deadline.

Our Con-form Group Frames Division was born from our history of developing revolutionary industry-first rooftop machinery platforms.

We pioneered the use of ultra-light steel materials to span between rafters - distances of more than 10 metres - which carry loads of many tonnes.

From these proprietary designs came our unique floor chassis for sub-floor and multi-level mezzanine applications.

Welcome to the Framing Division of Con-form Group

- > EasyFloor Transportable Sub-Floor Frame
- > EasyFloor Modular Floor Frame (Multi-storey)
- > EasyFloor Mezzanine Floor Frame

Complemented by:

- > DiamondSteel Internal Wall Frame
- > DiamondSteel Internal Ceiling Frame
- > DiamondSteel Wall Enveloping Frame

The Superior Steel

EasyFloor Frames are constructed using proven G550 hot-dipped aluminium/zinc alloy-coated Light Gauge Steel which is strong, durable and reliable. It has one of the highest strength-to-weight ratios of any conventional building product and we back it with a 50-year warranty.

It is resistant to:

- > Bending
- > Corrosion
- > Expansion
- > Fire
- > Moisture & mold
- > Shrinkage
- > Termites
- > Warping
- > Water

Con-form Flooring[®]

Flooring Systems

Sustainability

When it comes to sustainability our light gauge steel is a winner – it arrives from the mill with close to 100% recycled steel content and it has better (less energy consumption, lower emissions) production efficiencies than other types of building materials. There is almost zero wastage because we accurately measure and cut frames to the millimetre.

Reasons To Select An EasyFloor[®] Frame

Experience dramatic gains on your next project in accuracy, speed, flexibility and reduced cost.

- > Customisation
- > Dimensional Accuracy
- > Durability & Strength
- > Quick Installation
- > Weight
- > Warranty

Customisation

Each EasyFloor frame is custom designed to suit the individual requirements of your project specifications.

Proprietary-designed C- and box-section joists, bearers and beans combine to form an integrated modular system. It is capable of spanning between support columns 10 or more metres apart. Brackets are supplied for fast, no-fuss assembly. Handrail is available (mezzanine floors).

We can accommodate any floor plan including allocated spaces for access points such as stairwells and lifts. Our frames are ideal for single and multi-level flooring.

Pre-punched service holes for provide access for electrical, plumbing and other services. They are flared so that there are no sharp edges which could damage cabling, piping, etc.

EasyFloor frames have been independently tested by our technology development partner (University of Sydney) and they comply with relevant Australian Standards.

Dimensional Accuracy

Millimetre-perfect precision is dialed into each frame member from the outset...from the 3D CAD design and engineering certification phases through to production.

The approved DWG files are exported directly from Industrial Design to our custom-built state-of-the-art roll-forming technology.

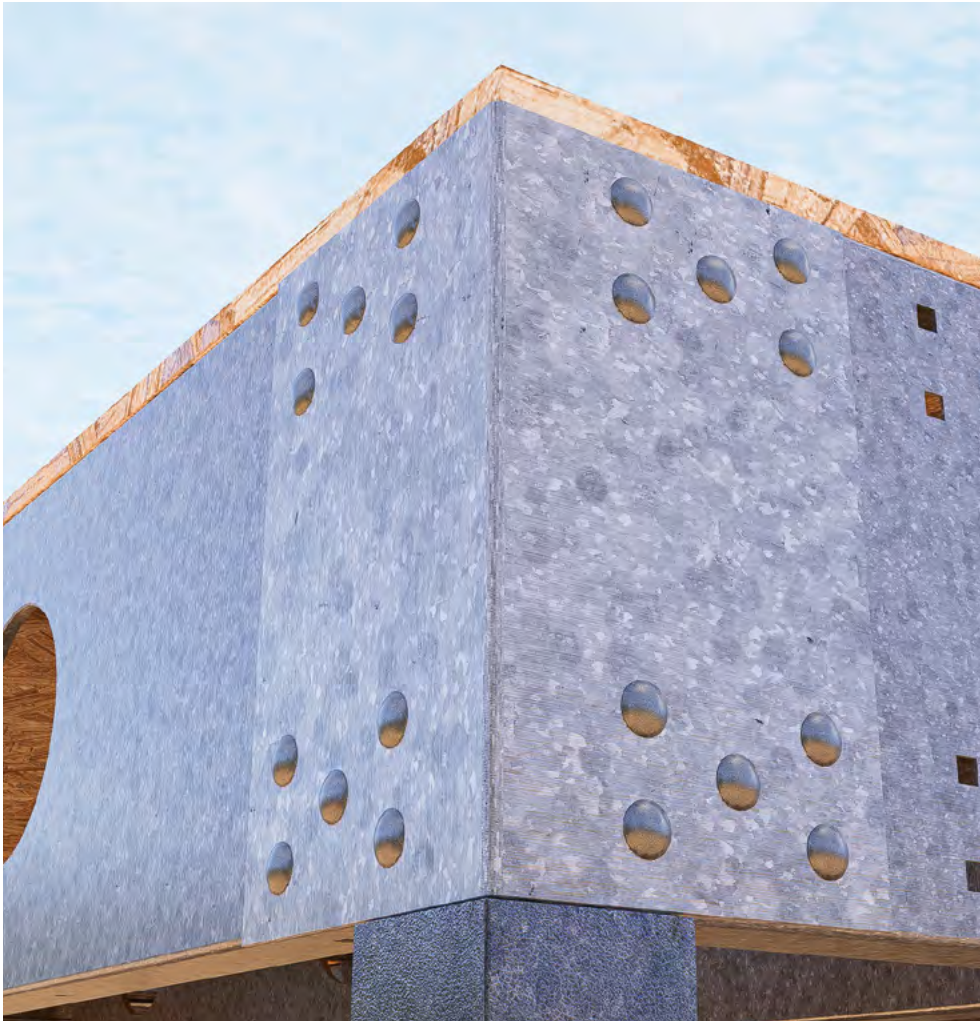
Built-in accuracy allows for rapid assembly onsite, thus reducing the time it takes to install your new floor.

No measuring, cutting or welding is required onsite.



Con-form Flooring[®]

Flooring Systems



Durability & Strength

G550 hot-dipped aluminium/zinc alloy-coated Light Gauge Steel is proven in the construction industry. It has a market-leading strength-to-weight performance.

Apart from our floor frames we also use it to construct mechanical platforms carrying tonnes of heavy powered equipment and for commercial building frames.

EasyFloor frame has been independently tested at the engineering test facility at the University of Sydney. Their outcomes mirror the exhaustive theoretical and physical tests conducted at the Con-form Group Product Test Lab.

Quick Installation

The speed of assembly and installation is a game changer with EasyFloor Floor Frame.

It begins with rapid production turnaround which comes as a result of our vastly experienced CAD-engineering-manufacturing teams, our history of custom-design and a fully equipped Manufacturing Centre of Excellence capable of large output.

We immediately dispatch the compact flat pack to destinations across Australia using our own HIAB-equipped vehicles or contracted transport.

The precisely dimensioned sections are assembled without any need for cutting, drilling or welding. A whole floor frame can be completed in a day or two.

Fewer installers for less hours equals a better bottom line.

Fasteners for fixing your frame must be suitable for corrosivity environmental category 3 or higher as per ISO 9223:2012.

The ultra-light weight of our unique chassis system makes it very easy to maneuver into place with a mobile crane. Smaller crane and less time equals another cost benefit.

Pre-punched 200mm service holes with flared edges allow trades to immediately install electrical, plumbing, water and other services without any fuss.

Weight

Generating optimum load capacity from ultra-light steel frames is a core strength of Con-form Group after more than two decades of product development.

A computer-generated comparison by our in-house Engineering department between our Light Gauge Steel floor chassis and an equivalent structural steel frame revealed that ours is 83% lighter!

Not only that, it is just one-third of the weight of a timber frame. The benefits of this lightness start with reduced freight costs and continue on your site where just a couple of installers can rapidly carry each section into place, and a mobile crane or loader can be utilised to move the assembled frame into place.

Con-form Flooring[®]

Flooring Systems

Warranty

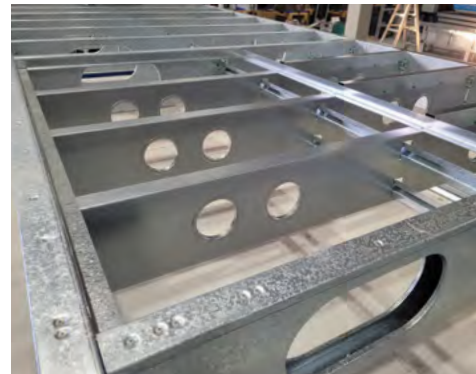
Con-form Group flooring frames are covered by our 50-year warranty.

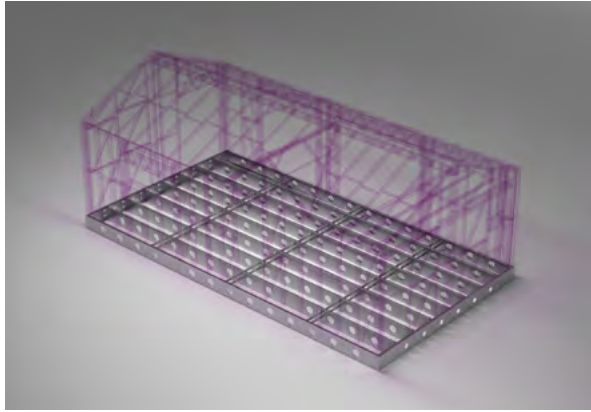


Our Guarantee To You

- > Products comply with Australian Standards
- > 50-year warranty on steel products
- > Dispatch Lead Time Guarantee (we will complete your project on time)
- > Comprehensive Safety Compliance (public and product liability insurance @ \$20,000,000 + professional indemnity insurance @ \$10,000,000)
- > Australian Owned > Australian Made (manufactured in accordance with our stringent Quality Control at our Bathurst-based facility)

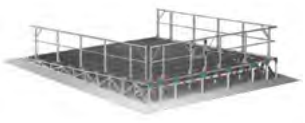
Every project is assigned to a Construction project manager who will liaise with you and our internal teams to ensure a quality on-time outcome.





Product Overview

Making it easy every step of the way



EasyMech **MR**®

Purlin-Mounted
HVAC+R Deck



Span+ **Platform**®

Rafter-Mounted
HVAC+R Deck



EasyMech **CR**®

Concrete Mounted
HVAC+R Deck



Con-form **Access**®

Roof Access Systems &
Walkways



Con-form **Frames**®

Wall Enveloping &
Internal Walls & Ceilings



Con-form **Floors**®

Mezzanine &
Sub-Floor Frames



Conceal **Wall**® &
Conceal **AeroWall**®

Premium Visual Barriers
with Airflow options



Louvre **Wall**®

Visual Barriers
with Airflow



Acoustic+ **Wall**®

Tunable Acoustic
Visual Barriers



Acoustic+ **LouvreWall**®

Acoustic Visual Barriers
with Airflow



Acoustic+ **UltraWall**®

Premium Acoustic
Visual Barriers



Screen to **Roof**®

Screen Systems
Directly Mounted to Roof

Con-form[®] GROUP

Making it *Easy*

Our Capability Brands



Manufacturing
Centre of Excellence



Digital
Design Centre



Product
Development Centre



Custom
Engineered Product



Architectural
Creative Partner



Design
To Install



Acoustic
Testing Lab



Australian
Owned/Operated



One
Stop Shop



Engineer
Certified



Rapid
Turnaround



EasyLift
System



Seamless
Production



Multi-Storey
Frames



Lightweight
Steel