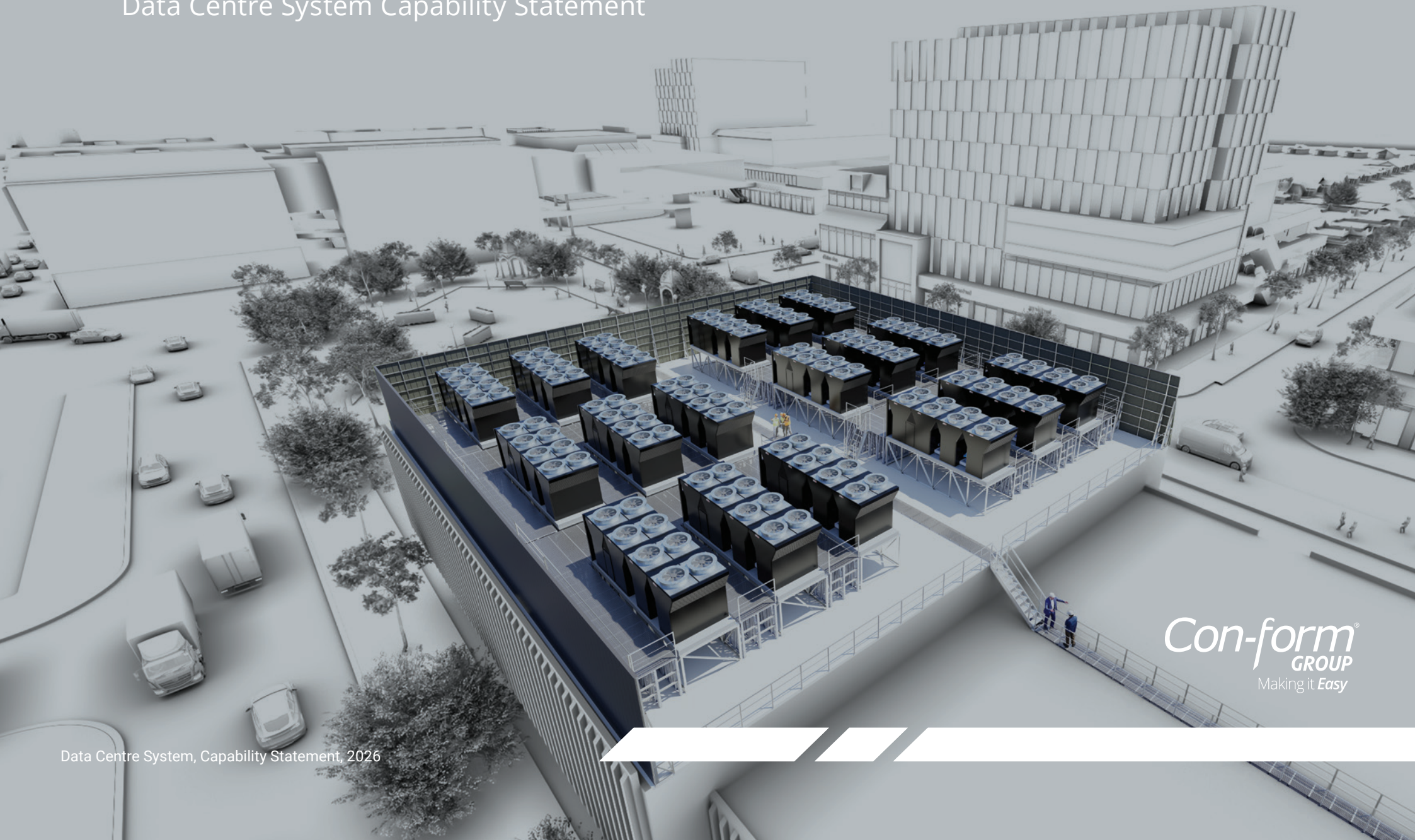


— HyperDelivery for Hyperscale

Data Centre System Capability Statement



Con-form
GROUP
Making it *Easy*

Proven Industry-First Technology & Unmatched Performance

Con-form Group is a unique privately-owned Australian engineering-manufacturing company which has led our sector in the national construction industry delivering more than 20,000 projects over two decades.

Our revolutionary rooftop load-bearing platforms/acoustic walls/concealment screens/access solutions are the preferred choice for hyperscale stakeholders including Amazon, Air Trunk, Canberra Data Centres, Microsoft, AW Edwards, Hindmarsh and Hutchison Builders.

With in-house industrial design, engineering, product testing and prototyping expertise we are continually innovating and this is welcomed by our customers who come to us in need of site-specific solutions.

We were the first company to challenge the use of structural steel for rooftop applications and develop ultra-lightweight prefabricated systems which attract dramatic cost and time savings. We call this the PAC System©.

We were the pioneers of the high performance, long-life acoustic system capable of capturing the increased unwanted noise produced by data centre HVAC chillers. As a result, we are the only solution provider in Australia offering Tunable Technology©.

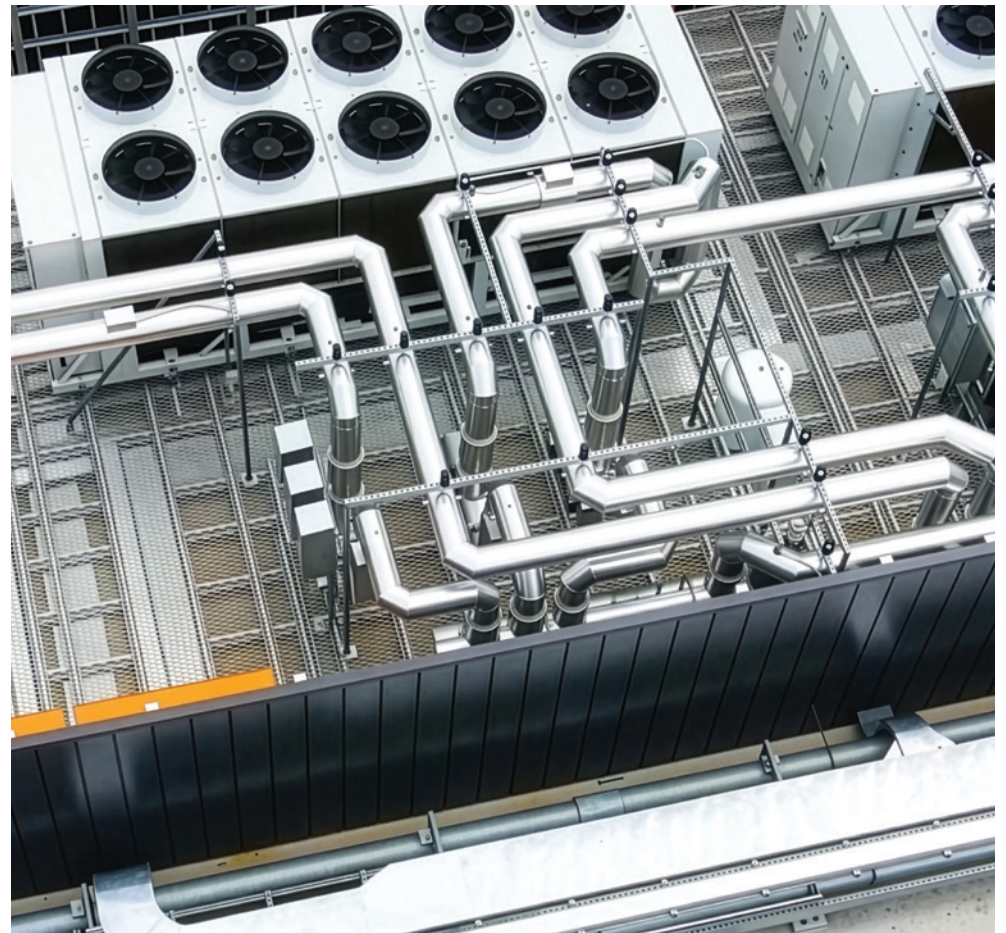
Plus, in response to the increasing need for remotely located data centres, our Frames Division developed a unique modular floor-wall-ceiling frame system for transportable buildings. The HorizonHub©.

Our customers all benefit from our turn-key Single Source Supplier capability (featuring D2i or design-to-production-to-installation services) which ensures systems are designed to fit together, product quality is consistently high, turnaround is rapid and cost efficiencies are passed on.

We also have the manufacturing capacity to supply the nation's largest hyperscale projects.

All Con-form Group products are covered by our 25 year warranty for your peace of mind and you have my personal guarantee that every member of the team will give their very best to serve you. This is why we are the preferred solution across the nation.

Nigel Cro
Managing Director



A Solid Foundation

Culture is the bedrock upon which Con-form Group is able to progressively build and grow and expand its capabilities. We are proud of the values which enrich our team environment and contribute to the increasing strength of the company.

Our Values

- > Positive team with a caring spirit.
- > Humility, gratitude and respect.
- > Great attitudes = great outcomes.
- > Embrace and drive change.
- > Deliver an awesome customer experience.

Our Vision

- > To be recognised as the leading authority on noise mitigation acoustic walls and mechanical equipment mounting systems.
- > The primary choice in the market as a result of our passionate design and a relentless pursuit of innovation.

Our Purpose

- > To provide highly effective fit-for-purpose solutions through the innovative use of common materials.

Our Mission

- > Understanding fully what our customers are trying to achieve.
- > Enable education on the correct value solution.
- > Rendering traditional methodologies obsolete.

Working with Con-form Group has been a faultless experience.

The team were able to adapt and create a solution that worked perfectly for our project – one that wasn't straightforward and resulted in a lot of last-minute changes which Con-form Group were able to quickly and proactively make.

There was a lot of coordination between the engineers and Con-form Group designers to come up with a solution and the team just nailed it.

The most impressive part of all was that we needed the plant deck quite urgently so the team fabricated the deck and organised transport within 48 hours. They were the only contractor which met our crane on time.

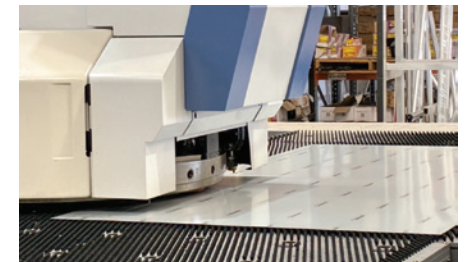
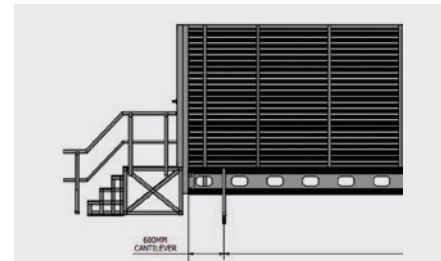
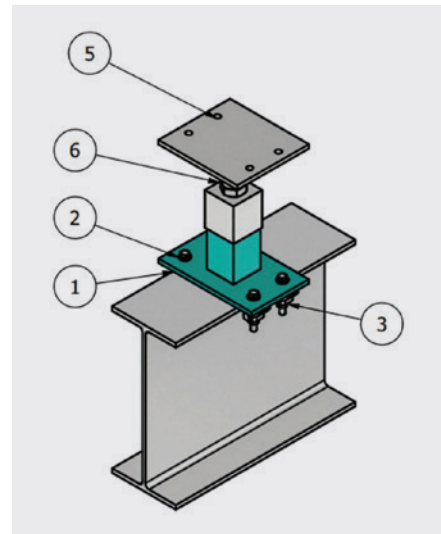
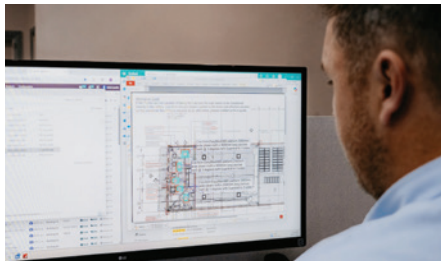
The key to what we at Hutchinson Builders look for is the ability to evolve and adapt to what the builder requires, and Con-form Group made that a lot easier for us.

Honestly, it was a good system, good process and good people.

Oliver Macklin
Hutchison Builders

Design to Delivery

Con-form Group provides a complete turnkey solution from the consultative stage at the commencement of the building project all the way through to installation and final inspection of our systems. We offer a seamless process that spans from the initial consultative stage to the final installation and inspection of our cutting-edge systems. Our commitment to excellence is evident in every phase of development, ensuring that our clients receive a tailored solution that aligns perfectly with their needs and investment goals. Every stage of development is managed by our handpicked team who have extensive knowledge of what is required to produce the right solution at the right time for the right investment.



Project Management

Our consultants take the time to understand the nuances of your project. We believe in establishing effective dialogue and fostering a relationship built on transparency, trust, and effective communication.

Design

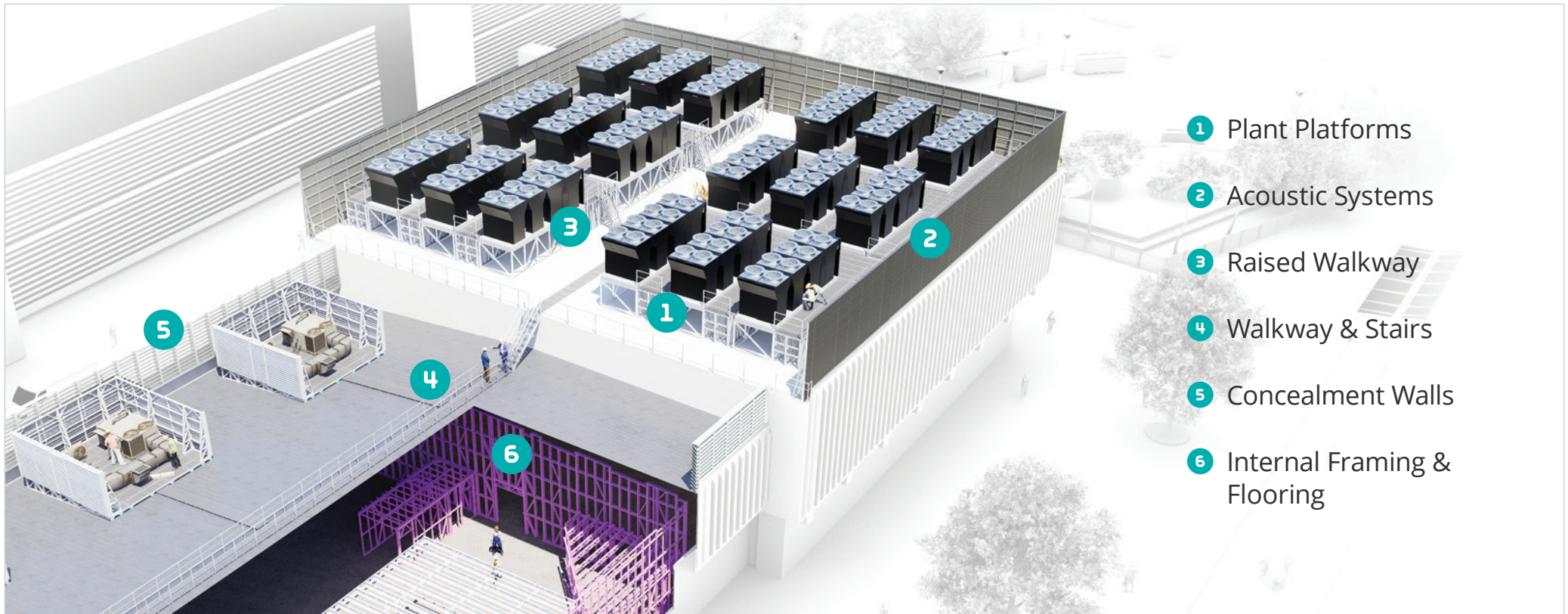
Each data centre system is designed with millimetre perfect tolerances using world-best 3D CAD/CAM software. We provide structural shop drawings and custom drawing details tailored to your project's individual requirements.

Engineering

Con-form's structural and mechanical engineers develop customised solutions to meet the specific requirements of each project. We also provide engineering certification and sign-offs.

Manufacturing

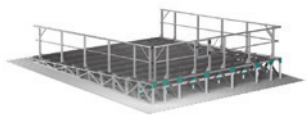
Our fully equipped Manufacturing Centre of Excellence – with its using state of the art machinery and skilled personnel – is responsible for making our proprietary components, assembling platforms ready for installation, R&D prototyping and testing.



The Total Data Centre System

PAC SYSTEM

Platforms. Acoustics. Concealment.



EasyMech **MR**®

Purlin-Mounted
HVAC+R Deck



Span+ **Platform**®

Rafter-Mounted
HVAC+R Deck



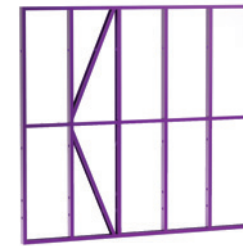
EasyMech **CR**®

Concrete Mounted
HVAC+R Deck



Con-form **Access**®

Roof Access Systems &
Walkways



Con-form **Frames**®

Wall Enveloping &
Internal Walls & Ceilings



Con-form **Floors**®

Mezzanine &
Sub-Floor Frames



Conceal **Wall**® &
Conceal **AeroWall**®

Premium Visual Barriers
with Airflow options



Louvre
Wall®

Visual Barriers
with Airflow



Acoustic+
Wall®

Tunable Acoustic
Visual Barriers



Acoustic+
LouvreWall®

Acoustic Visual Barriers
with Airflow



Acoustic+
UltraWall®

Premium Acoustic
Visual Barriers



Screen to **Roof**®

Screen Systems
Directly Mounted to Roof

Platforms. Acoustics. Concealment.

— PAC SYSTEM —



Span+© Rafter-Mount

Revolutionary industry-first Light Gauge Steel alternative for when purlins don't have the load capacity to support HVAC&R equipment, and when a surface mounted platform is not an option. Ultra-strong, secure and lightweight (from only 19kg per m²) modular system pioneered by Con-form Group. Attaches directly to rafters with minimal penetration using our proprietary stub columns. Can be installed without any interruption to data centre operation below. Generations ahead of more costly traditional platforms. Individually engineered to suit each building requirement. Span of 10.5m between rafters - can be increased.

EasyMech MR© Purlin-Mount

A sleek design unique to Con-form Group for metal roofs which made traditional aluminium and structural steel platforms obsolete. Reduces the structural requirements of the roof by cleverly distributing loads evenly. Engineered to a live load rating of 2.5kPa, 5.0kPa and greater. Lightweight (@ just 16kg per m²) and modular for ease of assembly - available in 600mm increments. Penetration-free mounting. Ideal for high-pitched and saw-toothed roofs. Minimises duct work by placing HVAC units directly above internal units.

EasyMech CR© Surface-Mount

Con-form Group's exclusive penetration-free mounting solution designed for concrete roofs. Similar qualities to MR with even lighter design (@ 10kg per m²). Utilises our proprietary engineer-certified EasyFootCR© system which has a load rating of 1000kg per foot. Height adjustable to accommodate roof slopes and drainage falls. Superior vibration isolated foot provides additional noise attenuation.

Platforms. **Acoustics.** Concealment.

— PAC SYSTEM —



Acoustic+© Wall

Ultra-high performance noise wall system developed by Con-form Group in collaboration with Acoustic Engineers. Only solution in Australia featuring Tunable Technology© - with an NRC of 0.75. Superior technology for attenuation of airborne noise due to its three-phase operation (absorbing-reflecting-absorbing). Ideal for sites with multiple acoustic targets in different directions. Acoustic+, an attractive solution, offering long-term durability, stability and performance.

Acoustic+© UltraWall

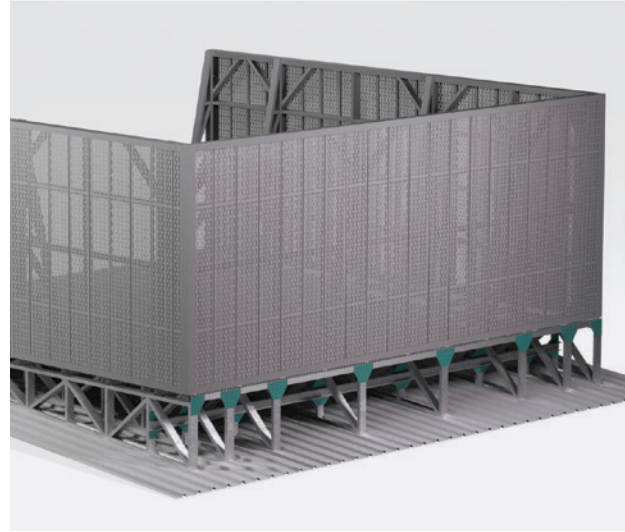
Best in class acoustic solution designed specifically to capture data centre chiller noise. Our superior noise wall barrier with Tunable Technology© provides optimal sound mitigation. Absorptive noise-cancelling (recyclable) barrier produces maximum Noise Reduction Coefficient (NRC) of 1.0. Three phase operation effectively absorbs, reflects and re-absorbs noise. We offer a 25-year warranty for the steel components with a 10-year warranty for replaceable items ensuring long-term reliability and performance.

Acoustic+© LouvreWall

Capture noise and ventilate machinery. This exclusive design with our own Tunable Technology© incorporates Acoustic+ UltraBlade© sound barrier panels within a modular frame specifically engineered for the most challenging acoustic environments. NRC 1.0 the same as UltraWall. Three-phase operation ensures superior noise control. Choose from single blade or chevron louvre depending on noise levels. Aesthetically attractive design.

Platforms. Acoustics. **Concealment.**

— PAC SYSTEM —



Conceal Wall©

Aesthetics and functionality. Hide unsightly plant equipment and complement the building façade with a palette of modern colours. The versatility of our Conceal Wall© enclosure makes it an ideal solution for a wide range of applications. Whether you are looking to shield a condenser platform, house a compressor, block plant equipment or protect sensitive machinery. Our Conceal Wall© offers a comprehensive and hassle-free solution. Quick and easy to install with no cutting required. Standard and custom heights available. Double-up as a stylish building façade.

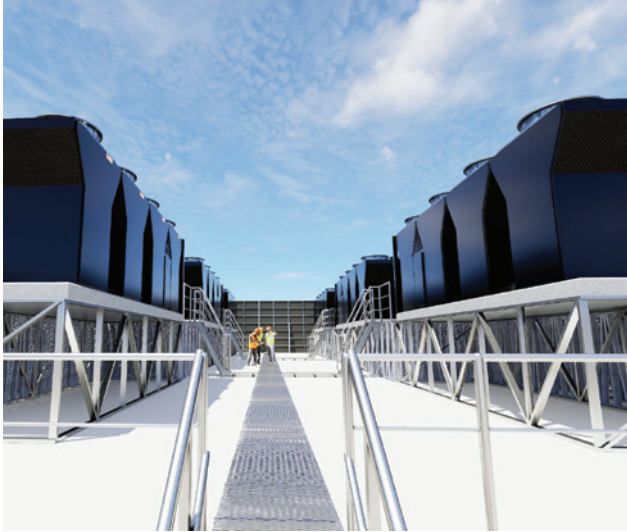
Conceal Wall Aero©

Function meets beauty. Conceal AeroWall© provides ventilation whilst shielding unsightly building equipment such as stairwells and landings or rooftop machinery. With 15% open airflow these modular interlocking cassettes offer quick and easy installation with no cutting required. Available in sizes ranging from 1200mm to 2400mm, as well as custom lengths, they feature a lightweight design and can be installed both vertically and horizontally. Choose from a variety of popular colours to complement or contrast with building surface.

LouvreWall©

Louvre panels increase air flow to machinery to improve performance longevity. An attractive visual barrier whilst allowing at least 55% air flow, seamlessly blending functionality with aesthetics. Our Louvrewall© allows the adjustment of air flow to be increased to suit individual requirements. Louvrewall© can be finished in a range of modern colours to complement the building façade. Single and double wall designs are available.

Easy Access



Raised Walkway

Developed by Con-form Group specifically for data centres. Custom designed to suit each site's requirements. Raised Walkway provides easy access to HVAC chiller unit servicing and maintenance crews. From below and above.

Walkaway, Guardrail, Stairs

Access systems to suit every roof type - compliant to AS1657:2018. A reliable and secure solution offering safety and lightweight functionality for roof pitches of up to 20 degrees. Engineered with precision and user safety in mind, this system is designed to provide a secure path for individuals navigating roof surfaces while ensuring optimal protection through its integrated guardrail.



Voice of Experience

Acoustics is becoming even more of an issue in the data centre industry and the best advice we can offer is to focus on it in the early stages of the construction project.

This is a topic we have researched for years with the result being the development of our unique Acoustic+ range and the construction of Australia's only privately owned commercially-accessible acoustics testing facility, Acoustilab.

Con-form Group has witnessed building companies being hit with budget blowouts because excessive HVAC&R noise levels were identified after construction had been completed. This could have been avoided with input from Conform Group at the outset.

Con-form Group has considerable expertise in this field having pioneered Australia's only tunable rooftop panel system, Acoustic+, in collaboration with acoustic engineers.

We have installed acoustic-control products on new and existing buildings across the nation. Our specialists know how to identify the correct solution for each building – including the required NRC rating, type and size of absorptive material, where it will be located, how it will be fastened to the roof and making sure it complements the overall design of the building.

Understanding this before construction will prevent a crisis which could impact the approval of the project by government authorities and lead to unnecessary delays, costs and tenant disputes.

I've been working with Con-form Group for about two years and every experience has been great! We at Prime Projects choose to work with Con-form Group because of their excellent customer service, competitive pricing and efficient installation. The most recent project we collaborated on required an acoustic screen solution to be designed & manufactured without a site measure, which was achieved. This goes to show the flexibility of the systems Con-form Group has in place to ensure their clients are satisfied no matter the situation.

Mitchell Wood
Prime Projects

Frigcorp have used Con-form Group for years, we liken their products to a luxury add-ons to our solutions. Con-form Group products are quick and easy to install – we know exactly what we're getting when we work together. The service is great and we enjoy our easy relationship with the team at Con-form Group.

Dean Price
Frigcorp Building Technologies

My experience with Con-form Group has been absolutely fantastic. The sales team & project management team saw that the project went smoothly & without a hitch. On knowledge, professionalism and quality of workmanship, I'd give Con-form Group a 10 out of 10.

Luke Van Der Weyde
ADCO Constructions

HORIZON HUB

Modular Mastery

Our Frames Division has developed a solution specifically for those long-distance projects which require transportable structures.

- > Floor frames
- > Interior / exterior wall frames
- > Ceiling frames
- > Roof trusses
- > Interlocking cladding

Everything you require from the same source.

Frame systems designed to fit together and consistently high product quality throughout.

We understand the complexities of remote data centre hubs including the need for strength and durability whilst offering the lightest possible solution.

Can be supplied in stick-form, prefabricated frame sections or completely assembled.

Present your concept design to us and we will respond with a fit-for-purpose package which includes engineering certification.



Manufacturing
Centre of Excellence



Digital
Design Centre



Product
Development Centre



Custom
Engineered Product



Architectural
Creative Partner



Design
To Install



Acoustic
Testing Lab



Australian
Owned/Operated

Con-form
GROUP
Making it *Easy*

DATA CENTRE DIVISION

☎ 1300 882 490

✉ sales@con-formgroup.com.au

➔ www.con-formgroup.com.au

