



HOUSERIDER NEUSHOORN | V36 | 26-3-2026

VISITORS ADDRESS

Ruiterskwartier 41
8911 BP LEEUWARDEN
The Netherlands

POSTAL & BILLING ADDRESS

Stichting Harmoniekwartier
Postbus 848, 8901 BP
LEEUWARDEN
The Netherlands

PHONE

+31 (0) 583 030 730

EMAIL

info@neushoorn.nl

WEBSITE

www.neushoorn.nl

SOCIAL MEDIA

[FACEBOOK](#)

[INSTAGRAM](#)

CAPACITY

Grote Zaal (Main Stage):	700
Arena:	250
Neushoorn Café:	150

GENERAL INFORMATION

CONCEPT

Neushoorn is not just a music venue: in the same building you'll find Firda, a school for creative studies. The students go to school there and cooperate intensively with Neushoorn professionals during their time here. Furthermore, several artistic entrepreneurs and organizations call Neushoorn home. All those different people make for an exciting hub for all things creative and cultural. That's Neushoorn!

FIREPROOF CERTIFICATES & RESTRICTIONS

There are strict regulations concerning the use of pyrotechnical devices, smoke and fire effects on stage. Don't hesitate to get in touch with the venue's production manager well in advance if your production involves anything like this. All scenery, backdrops etc. must be flameproof and comply with all Dutch fire and safety regulations. The use of animal blood, animal carcasses, any kind of confetti, snow, glitter, foam or bubble machines is not allowed.

SMOKING

Neushoorn maintains the Dutch law; smoking inside the building is not allowed. It is also prohibited to smoke inside the Loading Dock.

SOUND LIMITS

Max average equivalent noise level for Arena and Grote Zaal: Leq=103 dB (A), measured over 15 minutes at FOH position, 2 meters above ground. For the NH Café this is 98dB (A), measured over 15 minutes at FOH position, 2 meters above ground.

- > 0-13 years: Leq=91 dB(A), measured over 15 minutes.
- > 14-15 years: Leq=96 dB(A), measured over 15 minutes.
- > 16-17 years: Leq=100 dB(A), measured over 15 minutes.

Sound levels will be measured and registered during the show. Measurements will always be available to band- and house FOH tech. If sound levels exceed the maximum average, our house tech will intervene to maintain the maximum sound level. Sound level measurements will be shared with the Ministry of Health, Welfare and Sport (VWS).

SECURITY

Standard security, no stage barriers. Please let us know well in advance if you have a specific reason why barriers should be used. Please note: the use of a barrier reduces the capacity with 50. Costs for the barrier and additional security guards will be for the account of the artist.

IMPORTANT

We are obliged to work according to the Dutch occupational health and safety regulations determined by the Dutch Labour Inspectorate. We expect you to do the same.

CONTACT

Production Team

Email: prepro@neushoorn.nl

At arrival, please make a call to the given on-day contact.

STANDARD TIME SCHEDULE FOR BAND PRODUCTIONS

You will receive a proposed time schedule tailored to the show. Early get-in is possible but must be requested at least 3 weeks in advance and will incur additional costs. The fee for and early get-in is €100 per additional hour, excluding VAT.

Early get-in (without technicians) is possible for nightliner shows. Additional crew-costs will only be charged if agreed upon in advance. If you want an early get-in, please notify us at least 3 weeks in advance of the show.

RECORDINGS

Main Hall:

Recording on DiGiCo SD10 or on Allen & Heath Dlive S5000

128 track recording 96Khz @24Bit can be made. Please notify 2 weeks in advance.

Costs are €50,- if you bring your own portable hard disk. If you don't bring a portable hard disk costs will be €100,-. Costs must be paid before the show. Prices are exclusive of 21% VAT.

Arena:

Recording on Dlive C3500

48 track recording 48Khz @24Bit can be made. Please notify 2 weeks in advance.

Costs are €50,- if you bring your own portable hard disk. If you don't bring a portable hard disk costs will be €100,-. Costs must be paid before the show. Prices are exclusive of 21% VAT.

CONFETTI, STREAMERS, DECO & SFX

Confetti is not permitted inside Neushoorn. Streamers, deco and SFX are permitted, but with strict regulations. For these regulations, see our [SFX & DECO PDF](#).

FACILITIES

DRESSING ROOMS

There are 5 private dressing rooms, an artist lounge and 3 private showers.

PARKING & ROUTE

Tour buses can be parked next to the loading dock. Cars can be parked in the car park [Oldehove](#), see availability [here](#). On Sundays, you need to park in the car park [Zaailand](#) instead, see availability [here](#). If your vehicle is a van of any sort, please contact our Production Team at least a week before the show. You will get directions to the parking facilities at the loading dock.

LOAD-IN ADDRESS

Molensteeg 5, 8911 BT Leeuwarden, the Netherlands. Click [here](#) for Google Maps.

BEWARE! There's a bus passage in our street. It is prohibited to drive through it. There is a traffic camera and the fines are severe.

FACILITIES

FOOD

If agreed upon beforehand, we provide in-house catering for you. A good and healthy menu will be served, no fast food or whatsoever. We want to contribute to a sustainable future. Since our industry is not the most environmentally friendly, we are constantly looking for opportunities to reduce our ecological footprint. Therefore, we have decided not to serve meat anymore. We only serve vegetarian and vegan food, and it's delicious!



If you have any moral issues with eating veggie food at our venue, please let us know so we can arrange something for you.

We also want to know with how many people you are coming and what their dietary wishes are. Please let us know a week before the show.

If you have any questions, feel free to contact us. We are happy to answer them.

BEVERAGES

Our venue has an exclusive partnership with Heineken & Vrumona, which supplies a variety of premium beverages, including Pepsi, 7-Up, Rivella, Sourcy mineral water, etc.

MERCHANDISE

There's a merchandise booth available for you next to the cloakroom. We do not charge you for the use of it. However, we would appreciate it if you'd make some T-shirts or CDs available for our hardworking volunteers. And who knows, it might get you an extra beer!

If you need a pin machine, we can provide one for a fixed fee of €95, exclusive taxes. Please let us know if you would like to use one of our machines well in advance and we'll make further arrangements from there.

If you need a merchandise seller or assistant, we can help for a fixed fee of €150. Please let us know well in advance if you need someone.

WIFI

Upon arrival you both the network and password can be found backstage.

TECHNICAL INFORMATION

LOCAL CREW

- > Every show is different, so we like to look at the needed local crew together to make sure all requirements are met.
- > Everybody helps loading in and out.

STAGE SIZES

- > Main Stage: 10 x 8 x 1 meters (33ft x 26,3 x 3,28 ft)
- > Arena: This is a multifunctional hall. We provide a suitable stage for each production. The standard stage size is 7 x 4 x 0,8 meters (23 ft x 13,1 x 2,62 ft). If you have specific needs or preferences, please let your pre-production contact know as soon as possible. The size of the Arena is 14 x 14 meters (46 x 46 ft).

CLEARANCE

- > Main Stage: max. 6 meters (19,69 ft).
- > Arena: max. 4 meters (13,12 ft).

RISERS (only available upon request)

- > 9 x Staged 2 x 1 meter decks standard (6,56 x 3,28 ft).
- > 2 x Rolling riser 2 x 2 meters, only 40 cm height possible (6,56 x 6,56 x 1,31 ft).
- > Rolling risers only available at Main Stage

POWER SUPPLY

Main Stage:

- > Light: 125A CEE 400V + 1 x 63A 400V

Arena:

- > Light: 1x 63A 400V
- > Audio: 2x 32A

BACKLINE

We will presume that artists will carry all backline unless otherwise agreed. Specific information about our backline can be supplied upon request.

DJ-SET (all stages)

- > 8x Pioneer CDJ-3000
- > 1x Pioneer DJM-A9

An instruction to prepare your files for our DJ gear can be found on page 16 of this house rider.

AV

- > Main Stage: Panasonic PTDZ10kEJ | 10.000 ANSI Full-HD | 16:9 | 6 x 3,38 meters
- > Arena: Panasonic PT-EZ580 | 6.000 ANSI Full-HD | 16:9 | 1,75 X 3,05 meters

MAIN STAGE | AUDIO SPECIFICATIONS

SOUND LIMIT

103dB(A) over 15 minutes

Front Of House and Monitor inputs are fully split with buffered analog multicore cable

FRONT OF HOUSE

Controls	> DiGiCo SD10: 96ch - 32 bus/ 16 analog i/o/ Core2/ Waves Audio Superack Full Bundle
Stage i/o	> DiGiCo SD Rack: 52 in 12 analog out 12 AES out
Main PA	Front > 4x EVO-6SH > 4x RES-2SH > 4x F215mk2 > 4x BR-218 > 2x BR-118 Balkon > 4x EVO-6SH

Added for the Immersive set-up

Front	> 5x PSM15
Side surround:	> 4x PSM15
Rear surround	> 4x F1201.2
Lip-fill	> 5x F61
Balkon	> 3x PSM15 > 13x F61
Versterkers/DSP	> 6x Full Fat Audio 8004HD DSP-G3 > 3x Full Fat Audio 8004HD > 5x Full Fat Audio 6004 > 3x Full Fat Audio 10.000

NST Audio > VMO-16
System processor > NST Audio DM-88
Spatial Audio processor: > Holophonix Ultra, 128x128 channels

MONITORS

Controls > Allen & Heath DLive S5000: 128ch – 64 bus/ 8 analog i/o/ Waves V3 expansion card
Stage i/o > Allen & Heath DM48 Rack: 48 in 24 analog out
Cabinets > 12x D&b audiotechnik M4 wedge
> 4x D&b Audiotechnik M6 wedge
> 2x D&b Auditechnik C7 sub

MIC LOCKER

Microphones > 6x Shure Sm58
> 6x Shure Sm57
> 1x Shure B91A
> 1x Shure B52A
> 2x Shure B57A
> 4x Sennheiser E604
> 1x Sennheiser E904
> 2x Sennheiser E906
> 1x Sennheiser MD421
> 2x Oktava MK-102
> 2x Oktava MK-012-01

DI boxes

> 3x BSS Mono DI
> 3x Radial Stereo DI

MAIN STAGE | LIGHT SPECIFICATIONS

CONTROLS

> Avolites Arena V17

Upon request, if available:

> Hog Fullboar

> Avolites Tiger Touch 2

MOVING

> 18x ROBE Robin Painte

> 12x ROBE Robin Ledwash 350

> 4x ROBE Robin Ledwash 350 FW

> 6x Chauvet Colorstrike M

STATIC

> 19x QueLed QR-5

> 8x FOS UNO Blinder

SMOKE MACHINE

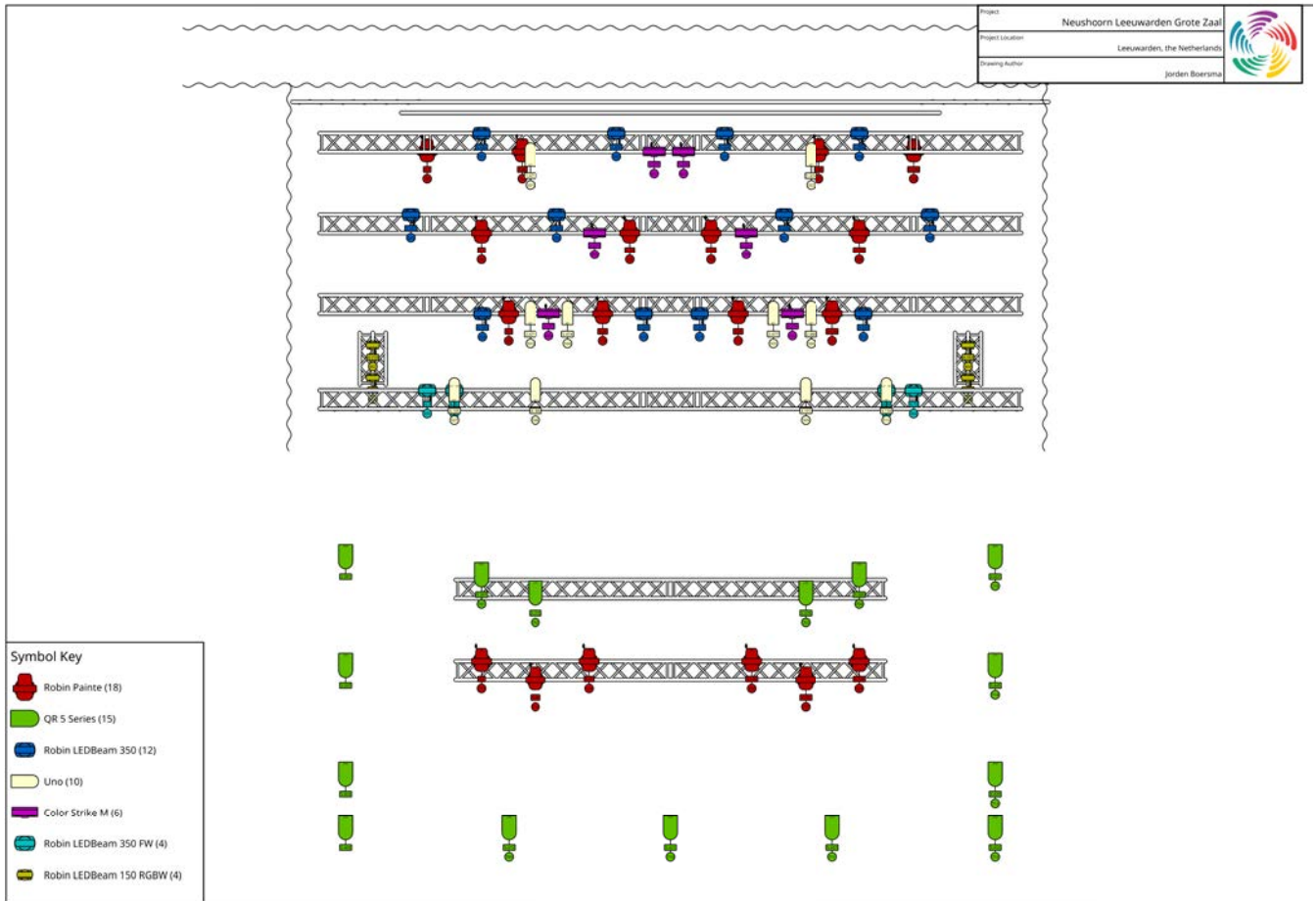
> 1x MDG ATMe

Upon request, if available:

> Look Unique Hazer

> Martin JEM ZR35

MAIN STAGE | LIGHT SPECS | TOTAL VIEW



MAIN STAGE | LIGHT SPECIFICATIONS | GUEST PATCH LIST



Showname: 2026 Q1Q2 N.H. G.Z. Guest Patch
 Date: 10/03/26-15:31
 Software Version: 18.0.313.5
 Console Name: JORDEN
 Console Type: Titan Editor

Patch View

User no.	Fixture	Mode	Address	Legend	Location	Pan Invert	Tilt Invert	Iris Invert	Pan Offset	Tilt Offset	P/T Swapped	Frozen	Notes	Items Used in
101	Robin Painte	Mode 2, 45 DMX	1.1	Painte	Fixtures, 1.008	No	No	No	-	-	No	No		321
102	Robin Painte	Mode 2, 45 DMX	1.46	Painte	Fixtures, 1.010	No	No	No	-	-	No	No		321
103	Robin Painte	Mode 2, 45 DMX	1.91	Painte	Fixtures, 1.011	No	No	No	-	-	No	No		323
104	Robin Painte	Mode 2, 45 DMX	1.136	Painte	Fixtures, 1.013	No	No	No	-	-	No	No		321
105	Robin Painte	Mode 2, 45 DMX	2.1	Painte	Fixtures, 1.027	No	No	No	-	-	No	No		321
106	Robin Painte	Mode 2, 45 DMX	2.46	Painte	Fixtures, 1.029	No	No	No	-	-	No	No		322
107	Robin Painte	Mode 2, 45 DMX	2.91	Painte	Fixtures, 1.032	No	No	No	-	-	No	No		321
108	Robin Painte	Mode 2, 45 DMX	2.136	Painte	Fixtures, 1.034	No	No	No	-	-	No	No		322
109	Robin Painte	Mode 2, 45 DMX	3.1	Painte	Fixtures, 1.048	No	No	No	-	-	No	No		322
110	Robin Painte	Mode 2, 45 DMX	3.46	Painte	Fixtures, 1.050	No	No	No	-	-	No	No		321
111	Robin Painte	Mode 2, 45 DMX	3.91	Painte	Fixtures, 1.051	No	No	No	-	-	No	No		321
112	Robin Painte	Mode 2, 45 DMX	3.136	Painte	Fixtures, 1.053	No	No	No	-	-	No	No		322
113	Robin Painte	Mode 2, 45 DMX	5.1	Painte	Fixtures, 4.008	No	No	No	-	-	No	No		19
114	Robin Painte	Mode 2, 45 DMX	5.46	Painte	Fixtures, 4.009	No	No	No	-	-	No	No		22
115	Robin Painte	Mode 2, 45 DMX	5.91	Painte	Fixtures, 4.010	No	No	No	-	-	No	No		17
116	Robin Painte	Mode 2, 45 DMX	5.136	Painte	Fixtures, 4.011	No	No	No	-	-	No	No		20
117	Robin Painte	Mode 2, 45 DMX	5.181	Painte	Fixtures, 4.012	No	No	No	-	-	No	No		22
118	Robin Painte	Mode 2, 45 DMX	5.226	Painte	Fixtures, 4.013	No	No	No	-	-	No	No		19
201	Robin LEDBeam 350	Mode 3 (Cpulse), 24 DMX	1.181	LEDBm 350	Fixtures, 2.008	No	No	No	-	-	No	No		246
202	Robin LEDBeam 350	Mode 3 (Cpulse), 24 DMX	1.205	LEDBm 350	Fixtures, 2.010	No	No	No	-	-	No	No		246
203	Robin LEDBeam 350	Mode 3 (Cpulse), 24 DMX	1.229	LEDBm 350	Fixtures, 2.011	No	No	No	-	-	No	No		246
204	Robin LEDBeam 350	Mode 3 (Cpulse), 24 DMX	1.253	LEDBm 350	Fixtures, 2.013	No	No	No	-	-	No	No		246
205	Robin LEDBeam 350	Mode 3 (Cpulse), 24 DMX	2.181	LEDBm 350	Fixtures, 2.027	No	No	No	-	-	No	No		240
206	Robin LEDBeam 350	Mode 3 (Cpulse), 24 DMX	2.205	LEDBm 350	Fixtures, 2.029	No	No	No	-	-	No	No		240
207	Robin LEDBeam 350	Mode 3 (Cpulse), 24 DMX	2.229	LEDBm 350	Fixtures, 2.032	No	No	No	-	-	No	No		240
208	Robin LEDBeam 350	Mode 3 (Cpulse), 24 DMX	2.253	LEDBm 350	Fixtures, 2.034	No	No	No	-	-	No	No		241
209	Robin LEDBeam 350	Mode 3 (Cpulse), 24 DMX	3.181	LEDBm 350	Fixtures, 2.048	No	No	No	-	-	No	No		239
210	Robin LEDBeam 350	Mode 3 (Cpulse), 24 DMX	3.205	LEDBm 350	Fixtures, 2.050	No	No	No	-	-	No	No		239
211	Robin LEDBeam 350	Mode 3 (Cpulse), 24 DMX	3.229	LEDBm 350	Fixtures, 2.051	No	No	No	-	-	No	No		239
212	Robin LEDBeam 350	Mode 3 (Cpulse), 24 DMX	3.253	LEDBm 350	Fixtures, 2.053	No	No	No	-	-	No	No		239
301	Robin LEDBeam 350 FW	Mode 3 (Cpulse), 24 DMX	4.1	LEDBm350FW	Fixtures, 4.029	No	No	No	-	-	No	No		9
302	Robin LEDBeam 350 FW	Mode 3 (Cpulse), 24 DMX	4.25	LEDBm350FW	Fixtures, 4.030	No	No	No	-	-	No	No		10
303	Robin LEDBeam 350 FW	Mode 3 (Cpulse), 24 DMX	4.49	LEDBm350FW	Fixtures, 4.031	No	No	No	-	-	No	No		9
304	Robin LEDBeam 350 FW	Mode 3 (Cpulse), 24 DMX	4.73	LEDBm350FW	Fixtures, 4.032	No	No	No	-	-	No	No		9
401	Robin LEDBeam 150	Mode 1, 22 DMX	4.97	LEDBm 150	Fixtures, 2.121	No	No	No	-16 %	-	No	No		101
402	Robin LEDBeam 150	Mode 1, 22 DMX	4.119	LEDBm 150	Fixtures, 2.101	No	No	No	-16 %	-	No	No		101
403	Robin LEDBeam 150	Mode 1, 22 DMX	4.141	LEDBm 150	Fixtures, 2.140	No	No	No	16 %	-	No	No		101
404	Robin LEDBeam 150	Mode 1, 22 DMX	4.163	LEDBm 150	Fixtures, 2.120	No	No	No	16 %	-	No	No		101
501	Uno	3 DMX	1.471	Uno	Fixtures, 3.002	No	No	No	-	-	No	No		3
502	Uno	3 DMX	1.474	Uno	Fixtures, 3.003	No	No	No	-	-	No	No		3
503	Uno	3 DMX	2.471	Uno	Fixtures, 3.021	No	No	No	-	-	No	No		3
504	Uno	3 DMX	2.474	Uno	Fixtures, 3.022	No	No	No	-	-	No	No		3

ARENA | AUDIO SPECIFICATIONS

SOUND LIMIT

103dB(A) over 15 minutes

FRONT OF HOUSE

Controls > Allen & Heath DLive C3500: 128ch – 64 bus/ 8 analog i/o/
Waves V3 expansion card

Stage i/o > Allen & Heath DX012

Main PA > Line array 4x Nexo s805 top cabinets
> 2x Nexo L18 sub cabinets

MONITORS

(NO ANALOG SPLIT AVAILABLE)

Controls > From FOH unless agreed otherwise upon request

Cabinets > 6x D8b audiotechnik M4 wedge
> 2x D8b Audiotechnik M6 wedge

MIC LOCKER

Microphones > 4x Shure Sm58
> 4x Shure Sm57
> 1x Shure B91A
> 1x Shure B52A
> 1x Shure B57A
> 4x Sennheiser E604
> 1x Sennheiser E904
> 1x Sennheiser E906
> 1x Sennheiser MD421
> 2x Oktava MK-102
> 2x Oktava MK-012-01

DI boxes

> 3x BSS Mono DI
> 3x Klark Teknik Stereo DI

ARENA | LIGHT SPECIFICATIONS

CONTROLS > RoadHog Full Boar 4

MOVING > 12x ROBE DL4X
> 12x ROBE Robin Ledwash 150

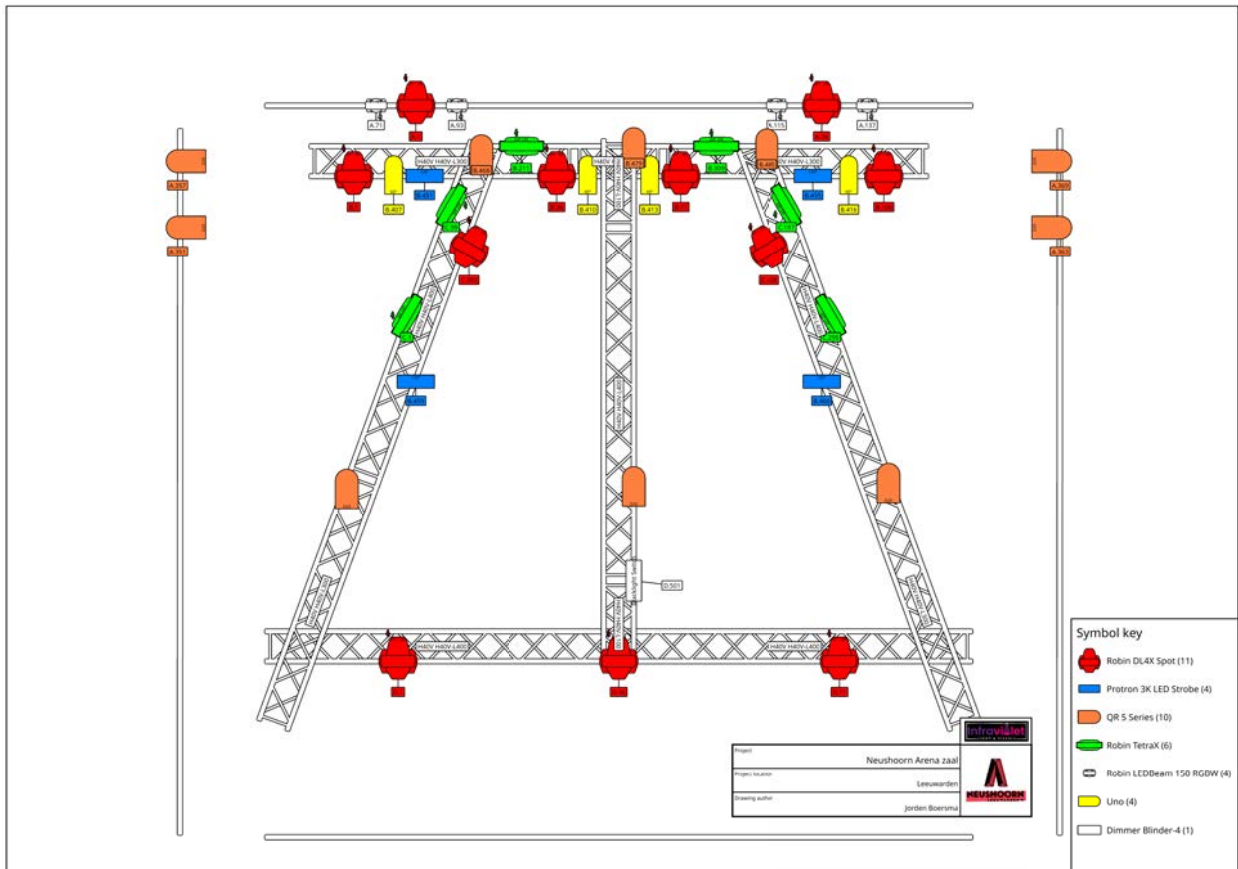
STATIC > 11x QueLed QR-5
> 6x FOS UNO Blinder
> 4x Elation Protron 3K
> 4x Elation 100WW Fresnell

SMOKE MACHINE > 1x Swefog K1

NETWORK

Dmx control is done via ArtNet, IP-Adresses will be communicated upon arrival. We have a total of 8 universes available as standard and we use universe 1 thru 5. Three universes are available upon on request.

ARENA | LIGHT SPECIFICATIONS | TOPVIEW



ARENA | LIGHT SPECIFICATIONS | PATCH LIST



Showname: N.H. ARENA 2026 Q1Q2 GUEST PATCH
 Date: 05/02/26-13:38
 Software Version: 18.0.313.5
 Console Name: AVO ARENA N.H.
 Console Type: Arena

Patch View

User no.	Fixture	Mode	Address	Legend	Location	Pan Invert	Tilt Invert	Iris Invert	Pan Offset	Tilt Offset	P/T Swapped	Frozen	Notes	Items Used in
101	Robin DL4X Spot	Mode 1, 35 DMX	1.1	Robin DL4X	Fixtures, 1.005	No	No	No	-	-	No	No		0
102	Robin DL4X Spot	Mode 1, 35 DMX	1.36	Robin DL4X	Fixtures, 1.006	No	No	No	-	-	No	No		0
103	Robin DL4X Spot	Mode 1, 35 DMX	2.1	Robin DL4X	Fixtures, 1.014	No	No	No	-	-	No	No		0
104	Robin DL4X Spot	Mode 1, 35 DMX	2.36	Robin DL4X	Fixtures, 1.015	No	No	No	-	-	No	No		0
105	Robin DL4X Spot	Mode 1, 35 DMX	2.71	Robin DL4X	Fixtures, 1.016	No	No	No	-	-	No	No		0
106	Robin DL4X Spot	Mode 1, 35 DMX	2.106	Robin DL4X	Fixtures, 1.017	No	No	No	-	-	No	No		0
107	Robin DL4X Spot	Mode 1, 35 DMX	3.393	Robin DL4X	Fixtures, 1.024	No	No	No	-	-	No	No		0
108	Robin DL4X Spot	Mode 1, 35 DMX	3.428	Robin DL4X	Fixtures, 1.027	No	No	No	-	-	No	No		0
109	Robin DL4X Spot	Mode 1, 35 DMX	4.1	FRONT/KEY-LIGHT	Fixtures, 1.044	No	No	No	-	-	No	No		0
110	Robin DL4X Spot	Mode 1, 35 DMX	4.36	FRONT/KEY-LIGHT	Fixtures, 1.045	No	No	No	-	-	No	No		0
111	Robin DL4X Spot	Mode 1, 35 DMX	4.71	FRONT/KEY-LIGHT	Fixtures, 1.046	No	No	No	-	-	No	No		0
201	Robin Tetra X	Mode 6, 98 DMX	2.211	Tetra X	Fixtures, 2.015	No	No	No	-	-	No	No		0
202	Robin Tetra X	Mode 6, 98 DMX	2.309	Tetra X	Fixtures, 2.016	No	No	No	-	-	No	No		0
203	Robin Tetra X	Mode 6, 98 DMX	3.1	Tetra X	Fixtures, 2.033	No	No	No	-	-	No	No		0
204	Robin Tetra X	Mode 6, 98 DMX	3.99	Tetra X	Fixtures, 2.024	No	No	No	-	-	No	No		0
205	Robin Tetra X	Mode 6, 98 DMX	3.197	Tetra X	Fixtures, 2.027	No	No	No	-	-	No	No		0
206	Robin Tetra X	Mode 6, 98 DMX	3.295	Tetra X	Fixtures, 2.038	No	No	No	-	-	No	No		0
301	Robin LEDBeam 150	Mode 1, 22 DMX	1.71	LEDBm 150	Fixtures, 2.004	No	No	No	-	-	No	No		0
302	Robin LEDBeam 150	Mode 1, 22 DMX	1.93	LEDBm 150	Fixtures, 2.005	No	No	No	-	-	No	No		0
303	Robin LEDBeam 150	Mode 1, 22 DMX	1.115	LEDBm 150	Fixtures, 2.006	No	No	No	-	-	No	No		0
304	Robin LEDBeam 150	Mode 1, 22 DMX	1.137	LEDBm 150	Fixtures, 2.007	No	No	No	-	-	No	No		0
401	QR-5	ARCS, 6 DMX	1.351	SIDELIGHTS	Fixtures, 2.051	No	No	No	-	-	No	No		0
402	QR-5	ARCS, 6 DMX	1.357	SIDELIGHTS	Fixtures, 2.041	No	No	No	-	-	No	No		0
403	QR-5	ARCS, 6 DMX	1.363	SIDELIGHTS	Fixtures, 2.060	No	No	No	-	-	No	No		0
404	QR-5	ARCS, 6 DMX	1.369	SIDELIGHTS	Fixtures, 2.050	No	No	No	-	-	No	No		0
405	QR-5	TOUR, 11 DMX	2.468	TRUSS DECO LIGHTS	Fixtures, 3.007	No	No	No	-	-	No	No		0
406	QR-5	TOUR, 11 DMX	2.479	TRUSS DECO LIGHTS	Fixtures, 3.008	No	No	No	-	-	No	No		0
407	QR-5	TOUR, 11 DMX	2.490	TRUSS DECO LIGHTS	Fixtures, 3.009	No	No	No	-	-	No	No		0
408	QR-5	TOUR, 11 DMX	4.106	HALL LIGHTS	Fixtures, 3.027	No	No	No	-	-	No	No		0
409	QR-5	TOUR, 11 DMX	4.117	HALL LIGHTS	Fixtures, 3.028	No	No	No	-	-	No	No		0
410	QR-5	TOUR, 11 DMX	4.128	HALL LIGHTS	Fixtures, 3.029	No	No	No	-	-	No	No		0
501	Protron 3K	Mode 4	2.451	STROBE	Fixtures, 3.021	No	No	No	-	-	No	No		0
502	Protron 3K	Mode 4	2.455	STROBE	Fixtures, 3.022	No	No	No	-	-	No	No		0
601	Uno	3 DMX	2.407	BLIND	Fixtures, 3.001	No	No	No	-	-	No	No		0
602	Uno	3 DMX	2.410	BLIND	Fixtures, 3.002	No	No	No	-	-	No	No		0
603	Uno	3 DMX	2.413	BLIND	Fixtures, 3.003	No	No	No	-	-	No	No		0
604	Uno	3 DMX	2.416	BLIND	Fixtures, 3.004	No	No	No	-	-	No	No		0
701	Dimmer	Dimmer	4.501	UV BLACKLIGHT	Fixtures, 3.047	No	No	No	-	-	No	No		0

NEUSHOORN CAFÉ | TECHNICAL SPECIFICATIONS

SOUND LIMIT

The max average equivalent noise level for Neushoorn Café is 98 dB(A), measured over 15 minutes at FOH position, 2 meters above ground.

P.A.	> Adamson 2xIS10P > 2x IS213 sub	
AMPS	> LAB Gruppen PLM 80:4	
FOH	> Allen & Heath SQ-5	Specs: SQ-5 24ch/24bus/12out
STAGE	> CAT - AR2412	Specs: 24bit/96khz 24ch in 12 out
WEDGES	> 4x D&B M6	Specs: 12"/1"

LIGHT SPECS

CONTROLS > Avolites T3 (controlled via a touchscreen located at the bar)

STATIC LIGHTS > 2x Elation ELED Fresnell 150 Specs: 150w led
> 6x Showtec Phantom 130 spot
> 8x Showtec Shark zoom wash one
> 8x Queled QR-5

SMOKE > 1x Antari Z-350 Fazer DMX

MICROPHONES > 4x Shure SM58
> 4x Shure SM57
> 1x Shure B52
> 3x Sennheiser e604
> 2x AKG AT2020
> 2x Sennheiser EW-D wireless

DI > 4x BSS 133 aktive DI

STAGE SIZE 5 x 3 x 0,5 meters (16,40 x 9,84 x 1,64 ft.)

SIZE DJ BOOTH 4 x 1 x 1,05 meters (13,12 x 3,28 x 3,44 ft.)

DJ GEAR See page five (5)

BACKLINE

Unless agreed upon otherwise, all bands will use the backline provided by Neushoorn.

NEUSHOORN CAFÉ | LIGHT SPECIFICATIONS | PATCH LIST

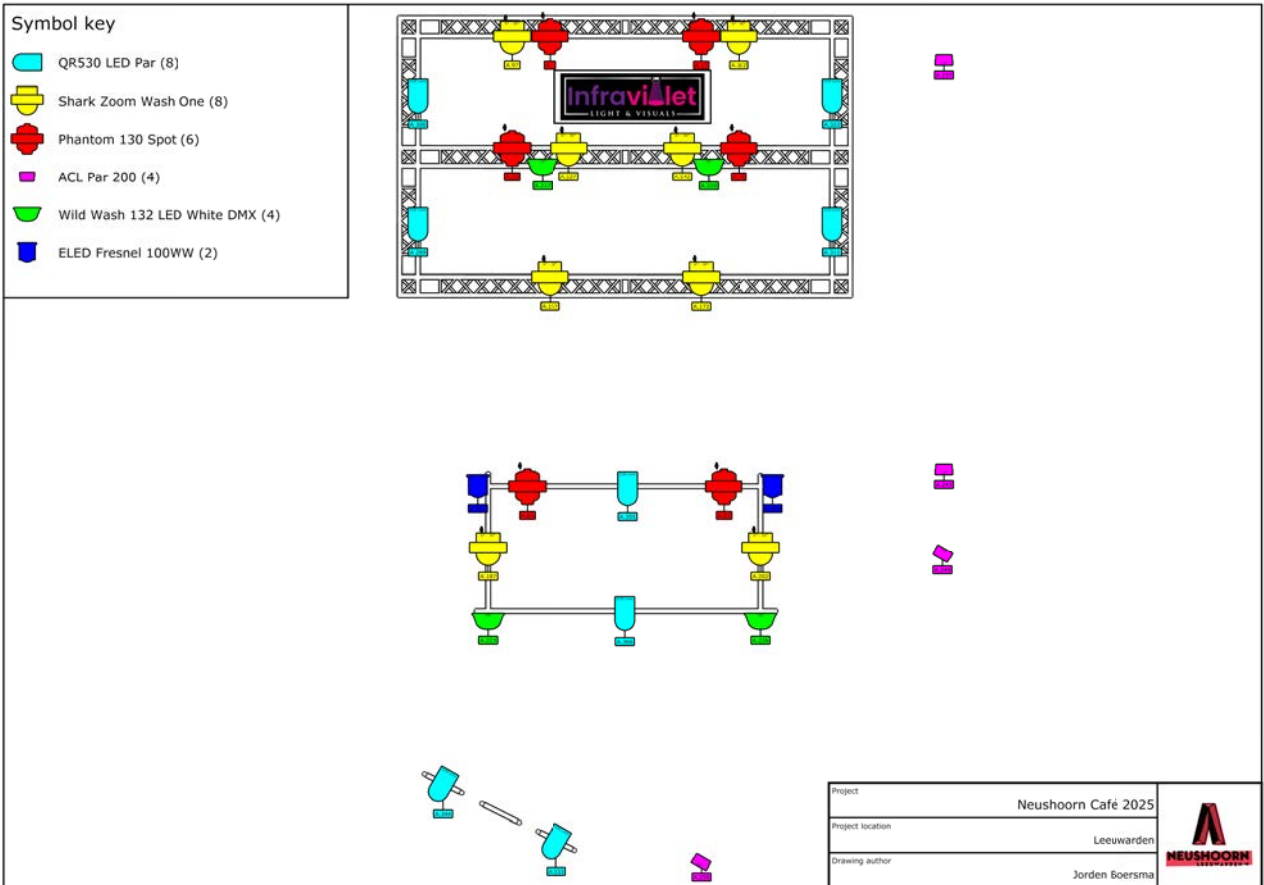


Showname: CAFE 2025 PATCHED WORKING
 Date: 10/03/26-18:37
 Software Version: 18.0.313.5
 Console Name: JORDEN
 Console Type: Titan Editor

Patch View

User no.	Fixture	Mode	Address	Legend	Location	Pan Invert	Tilt Invert	Iris Invert	Pan Offset	Tilt Offset	P/T Swapped	Frozen	Notes	Items Used in
19	Dimmer	Dimmer	1.501	FRONT	Fixtures, 3.022	No	No	No	-	-	No	No		5
20	Dimmer	Dimmer	1.502	FRONT	Fixtures, 3.024	No	No	No	-	-	No	No		5
21	Dimmer	Dimmer	1.496	Dim	Fixtures, 3.007	No	No	No	-	-	No	No		1
22	Dimmer	Dimmer	1.497	Dim	Fixtures, 3.008	No	No	No	-	-	No	No		0
23	Dimmer	Dimmer	1.498	Dim	Fixtures, 3.009	No	No	No	-	-	No	No		0
24	Dimmer	Dimmer	1.499	Dim	Fixtures, 3.010	No	No	No	-	-	No	No		1
101	Phantom 130 Spot	16 DMX	1.1	SPOT ACHTER	Fixtures, 1.004	No	No	No	16.67 %	-	No	No		54
102	Phantom 130 Spot	16 DMX	1.17	SPOT ACHTER	Fixtures, 1.007	No	No	No	16.67 %	-	No	No		54
103	Phantom 130 Spot	16 DMX	1.33	SPOT MID	Fixtures, 1.015	No	No	No	16.67 %	-	No	No		54
104	Phantom 130 Spot	16 DMX	1.49	SPOT MID	Fixtures, 1.016	No	No	No	16.67 %	-	No	No		54
105	Phantom 130 Spot	16 DMX	1.65	SPOT ZAAL	Fixtures, 1.023	No	No	No	16.67 %	-	No	No		54
106	Phantom 130 Spot	16 DMX	1.81	SPOT ZAAL	Fixtures, 1.028	No	No	No	16.67 %	-	No	No		54
201	Shark Zoom Wash One	15 DMX	1.97	WASH ACHTER	Fixtures, 2.004	No	No	No	16.67 %	-	No	No		45
202	Shark Zoom Wash One	15 DMX	1.112	WASH ACHTER	Fixtures, 2.007	No	No	No	16.67 %	-	No	No		45
203	Shark Zoom Wash One	15 DMX	1.127	WASH MID	Fixtures, 2.015	No	No	No	16.67 %	-	No	No		45
204	Shark Zoom Wash One	15 DMX	1.142	WASH MID	Fixtures, 2.016	No	No	No	16.67 %	-	No	No		45
205	Shark Zoom Wash One	15 DMX	1.157	WASH VOOR	Fixtures, 2.023	No	No	No	16.67 %	-	No	No		45
206	Shark Zoom Wash One	15 DMX	1.172	WASH VOOR	Fixtures, 2.028	No	No	No	16.67 %	-	No	No		45
207	Shark Zoom Wash One	15 DMX	1.187	WASH ZAAL	Fixtures, 2.034	No	No	No	16.67 %	-	No	No		45
208	Shark Zoom Wash One	15 DMX	1.202	WASH ZAAL	Fixtures, 2.037	No	No	No	16.67 %	-	No	No		45
301	QR-5	TOUR, 11 DMX	1.289	SIDE L	Fixtures, 4.001	No	No	No	-	-	No	No		16
302	QR-5	TOUR, 11 DMX	1.300	SIDE L	Fixtures, 4.011	No	No	No	-	-	No	No		16
303	QR-5	TOUR, 11 DMX	1.311	SIDE R	Fixtures, 4.003	No	No	No	-	-	No	No		16
304	QR-5	TOUR, 11 DMX	1.322	SIDE R	Fixtures, 4.013	No	No	No	-	-	No	No		16
305	QR-5	TOUR, 11 DMX	1.333	REKKEN ACHTER	Fixtures, 4.031	No	No	No	-	-	No	No		15
306	QR-5	TOUR, 11 DMX	1.412	REKKEN ACHTER	Fixtures, 4.041	No	No	No	-	-	No	No		15
307	QR-5	TOUR, 11 DMX	1.423	ZAAL	Fixtures, 4.033	No	No	No	-	-	No	No		15
308	QR-5	TOUR, 11 DMX	1.434	ZAAL	Fixtures, 4.043	No	No	No	-	-	No	No		15
401	ACL PAR 200	6 DMX	1.237	RAAM VOOR	Fixtures, 4.010	No	No	No	-	-	No	No		16
402	ACL PAR 200	6 DMX	1.243	RAAM VOOR	Fixtures, 4.020	No	No	No	-	-	No	No		16
403	ACL PAR 200	6 DMX	1.249	RAAM INGANG	Fixtures, 4.030	No	No	No	-	-	No	No		16
404	ACL PAR 200	6 DMX	1.255	RAAM INGANG	Fixtures, 4.040	No	No	No	-	-	No	No		16
501	Wild Wash 132 LED White DMX	3 DMX m1	1.217	STROBE STAGE	Fixtures, 3.002	No	No	No	-	-	No	No		3
502	Wild Wash 132 LED White DMX	3 DMX m1	1.220	STROBE STAGE	Fixtures, 3.004	No	No	No	-	-	No	No		3
503	Wild Wash 132 LED White DMX	3 DMX m1	1.223	STROBE ZAAL	Fixtures, 3.041	No	No	No	-	-	No	No		3
504	Wild Wash 132 LED White DMX	3 DMX m1	1.226	STROBE ZAAL	Fixtures, 3.045	No	No	No	-	-	No	No		3

NEUSHOORN CAFÉ | TOP VIEW



HOW TO PREPARE YOUR FILES FOR OUR DJ-GEAR

When following this guide, you ensure that you arrive prepared for you DJ show at Neushoorn. In a few simple but crucial steps, you can ensure that your show will run smoothly 99.9% of the time, and you won't encounter problems with our Pioneer DJ Gear.

STEP 1: CHOOSE THE RIGHT USB STICK DRIVE

Recommended USB stick drives include:

- > Corsair Flash Survivor Stealth
- > SanDisk Extreme Pro
- > SanDisk Ultra Fit USB 3.1 Portable Flash Drive
- > Integral Turbo USB 3.0
- > Transcend JetFlash 920
- > SanDisk Ultra Luxe

STEP 2: FORMAT THE USB STICK DRIVE

To have the optimal setup for your music, you need to format the USB stick drive to one of the formats below:

- > MS-DOS FAT (FAT32)
- > MAC OS EXTENDED HFS+

STEP 3: PREPARE YOUR MUSIC

To prepare your music for the Pioneer DJ Gear, you should run the tracks you want to play through REKORDBOX. This is a software program that analyzes all tracks for tempo, key and other information, allowing the DJ Gear to load all tracks more efficiently.

Use the following link for downloading and follow the instructions for using REKORDBOX: > <https://rekordbox.com/nl/download/>

After completing these steps, you are ready to perform at Neushoorn!