



## SDD300

### Features and Benefits

- Frequency controlled motor
- Lint filter drawer for an user friendly maintenance
- Large door opening for easy loading and unloading
- Reversing drum as standard
- Standard galvanized drum with large diameter
- WiFi module as standard

### Options

- Coin operated version (VEND)
- Stainless steel front panel
- Stainless steel drum
- Double door glass
- Residual moisture control: electro conductivity of linen measured with ribs
- Safe drying of delicate linen and overdrying prevention

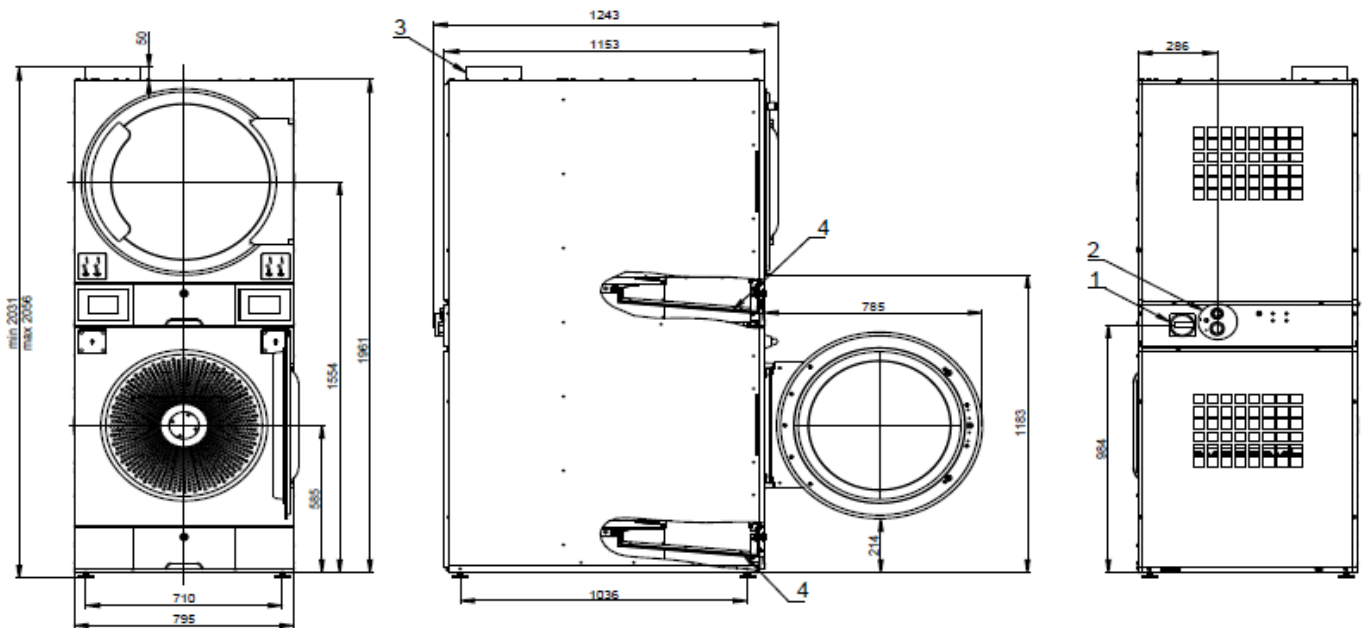
### Control

- 3 tiers of controls available
- Quantum Basic - micro processor for VEND with 4 temperature levels
- Quantum Basic - advanced microprocessor for OPL with 9 editable programs
- Quantum Touch - 5" multilingual touch screen
- WiFi as standard execution for all
- Cloud connectivity for 24/7 machine monitoring possible
- USB port for easy firmware updates, configuration and program uploads (Touch control)



# Tumble Dryer

		SDD300
<b>CAPACITY</b>		
Capacity 1:18	kg (lb)	2 x 16
Capacity 1:22	kg (lb)	2 x 13
Drum volume	l	2 x 285
Drum diameter	mm	Ø 2 x 760
<b>AIRFLOW</b>	m <sup>3</sup> /h	700/700; 1400
<b>DRYING AVERAGE</b>	g/min.	2 x 217
<b>MOTORS</b>		
Fan	kW	2 x 0,37
Drive	kW	2 x 0,37
<b>GAS HEATING</b>		
Gas connection	NPT	1/2"
<b>ELECTRICAL HEATING</b>		
Energy	kW	2 x 13,5
Electrical connection		208-240V 50/60Hz 1Ph - optional for gas and steam 208-240V 50/60Hz 3Ph - optional 380-415V +N 50/60Hz 3Ph - standard 380-415V 50/60Hz 3Ph - optional 440-480V 50/60Hz 3Ph - optional
<b>EXHAUST</b>	mm	Ø 200
<b>DIMENSIONS</b>		
Size HxWxD	mm	2010x795x1245
Net weight	kg	285
<b>TRANSPORT DATA</b>		
Packed HxWxD	mm	2090x855x1320
Gross weight	kg	305



Front side

Left side

Rear side

1. Main Switch
2. Main power supply
3. Exhaust
4. Filter