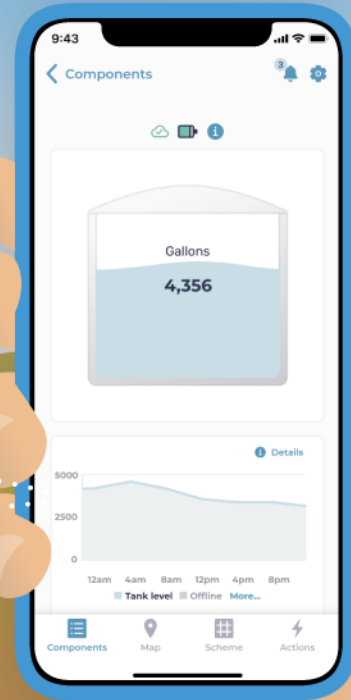
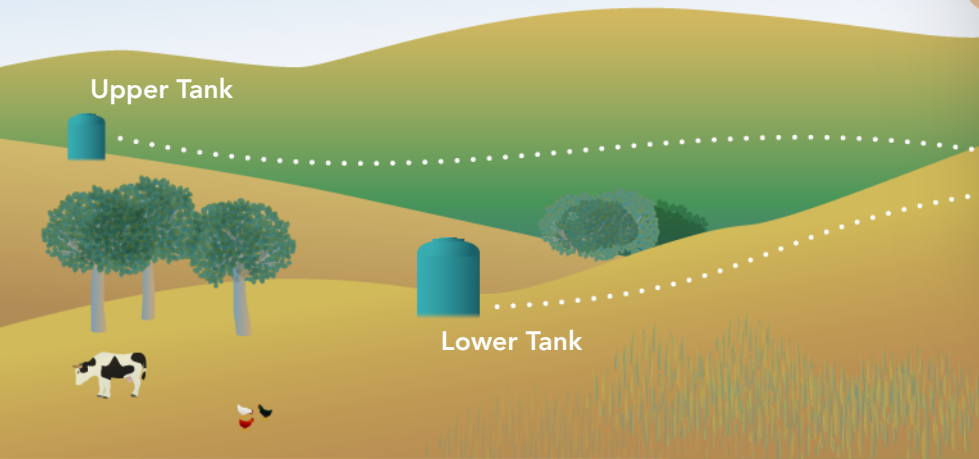


Tank Level Monitoring

The **meter.me**® tank level monitoring system offers remote visibility to your tanks, even in areas where there is no power or Internet network available.

Stay informed effortlessly with our easy-to-install system and user-friendly mobile app.



Benefits

- Save **money** - catch leaks before they become costly.
- Save **time** - view water levels remotely and avoid manual visits to your tank.
- Save **water** - use tank level stats and alerts to help identify leaks.

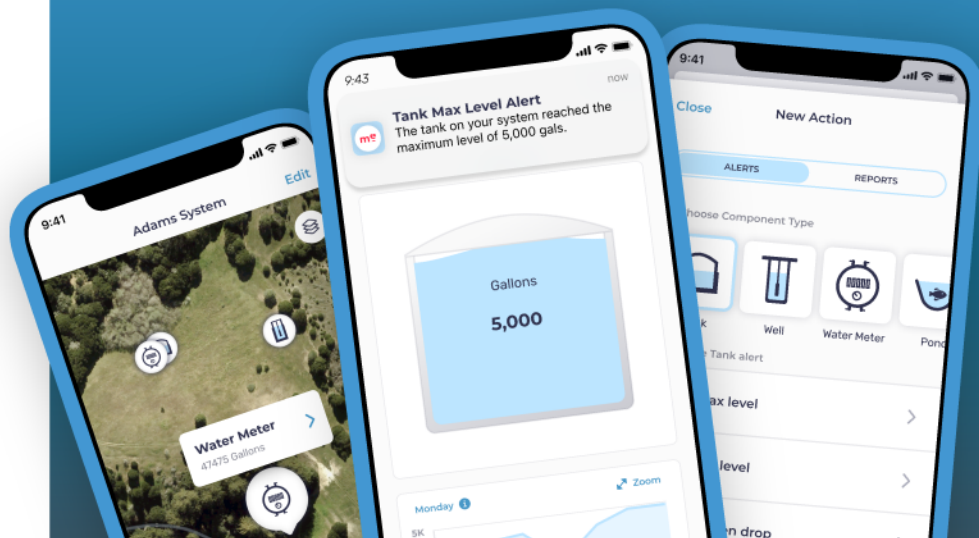
Key Features

- Leak detection alerts
- Cloud-hosted mobile application
- LoRa network connectivity
- Grid & off-grid powered

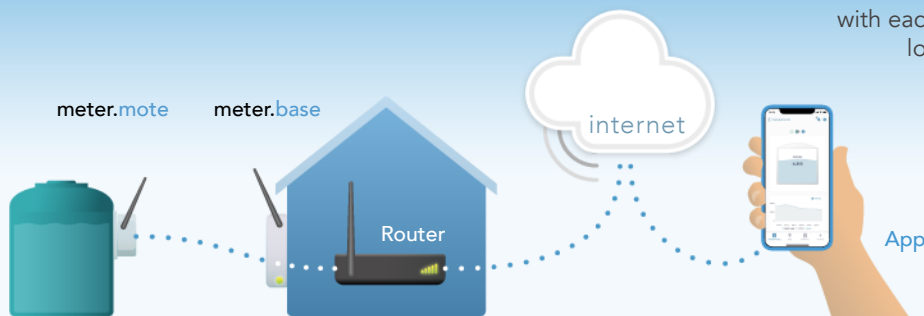
Mobile Application

Our mobile application is supported on iOS and Android devices and allows you to:

- View current & historic tank levels
- Receive low level and sudden drop alerts via SMS, push or email
- View your water system on the map



Connectivity



The **meter.base** (a LoRaWAN gateway) that is deployed with each meter.me installation, uses LoRa or long-range low power technology to facilitate communication between the water system components and the meter.me service platform.

The LoRa network functions even in areas of poor cellular or internet connectivity.

Equipment

Tank Level Monitoring

Our equipment line is continuously being evaluated and improved; these renderings are for general representation purposes.



meter.mote

Water Level Communicator



meter.base

LoRaWAN Gateway



meter.sense

Barometric Pressure Sensor

Technical Specifications

Operating temperature	-35C to +75C
Power draw	Idle Current 10µA, Transmit Current 130mA
Charge	5V 80mA Solar Panel, 2200mAh battery giving 5+ years depending on working conditions & solar coverage
Regulatory compliance	RAK carries CE Certification and FCC Certification
Connectivity	LoRa US915
LoRa gateway range	Up to 15 km (rural) & 2 km (urban)
Dimensions	L x W 160.27mm x 92.9 mm / 6.3" x 3.6"
Antenna	4.2dBi SMA Whip Style 915Mhz Antenna with female SMA connector
Housing	IP66/IP68 - Dust Tight, Water Resistant, Waterproof
Reporting frequency	2-4 hour standard reporting intervals; reports on change