



 **SUNCAR**

TB260E

Battery-powered electric excavator

**From the sun to the construction site.
Away from fossil fuels and towards solar
energy and zero-emission operation. The
SUNCAR TB260E embodies this vision.**

This battery-powered electric excavator is equipped with 4 hydraulic circuits for a wide range of attachments (1st hydraulic circuit with 100 l/min). The TB260E is ideal for use in confined spaces or in areas with exhaust and noise restrictions due to its zero-emission operation.

- » Equipped with a rear view camera and air-suspension seat with headrest, it offers a safe and ergonomic workplace.
- » Less noise and vibration, pleasant for people and the environment
- » No local exhaust emissions, fewer harmful greenhouse gases (e.g. CO², NOX)
- » Long-lasting, reliable lithium-ion battery, charging time approx. 3 hours, 6 hours of excavating in battery mode (8 hours with charging over the lunch period)
- » Remote Service System for an evaluation of operating hours, better targeted services and less downtime



**For three hours, two days
or a whole year** - if you need
it for your construction site,
you can **rent and buy** your
TB260E from us.

www.huppenkothen.com

MAIN DIMENSIONS	
Service weight* (kg)	6.795
Total width (mm)	2.000
Overall height (mm)	2.560
Transport length - dozer blade at the rear (mm)	6.110
Tracks	Rubber or steel
Track width (mm)	400
Ground contact (mm)	2.050
Ground pressure (kg / cm ²)	0,36
Dozer blade dimensions (mm)	2.000 x 430

*Machine weight + HUPPTilt + HUPPlate + medium size bucket

ELECTRIC MOTOR

Type	PM - synchronous axial flux
Rated output (kW)	40
Maximum torque (Nm)	160
Rated/max. engine speed (rpm)	2.200 / 2.400
Cooling system	40% distilled water / 60% glycol
Environmental impact	Emission-free

BATTERY SYSTEM

Type	Lithium-ion
Battery voltage (V)	364
Heating system	Bidirectional heat pump
Charger	Onboard
Maximum charging power (kW)	90 DC / 22 AC
Cable operation	Yes
Connection (A)	CEE63, 3-phase / 1-phase

WORK PERFORMANCE

Travel speed (km / h)	2,8 (1 st gear) / 4,9 (2 nd gear)
Slew speed (rpm)	6,4
Boom swing angle l / r (°)	78 / 55

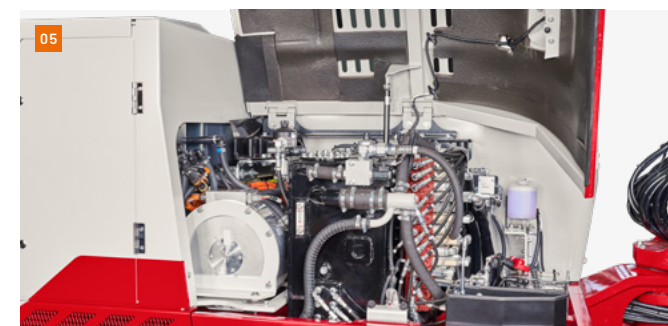
Gradeability (degrees / %)	30 / 58
Digging force bucket (kN)	43,2
Digging force arm (kN)	27,3

HYDRAULIC SYSTEM

Hydraulic pumps	Double variable axial piston pump + 2 x gear pump
Pump pressure (bar)	2 x 240 / 1 x 206 / 1 x 33
Flow rate (l / min)	2 x 58,3 / 1 x 43,9 / 1 x 10,8
Hydraulic tank (l)	49 (tank) / 90 (total)
Slew motor type	Axial piston motor, rigid
Travel motor type	Axial piston motor, variable

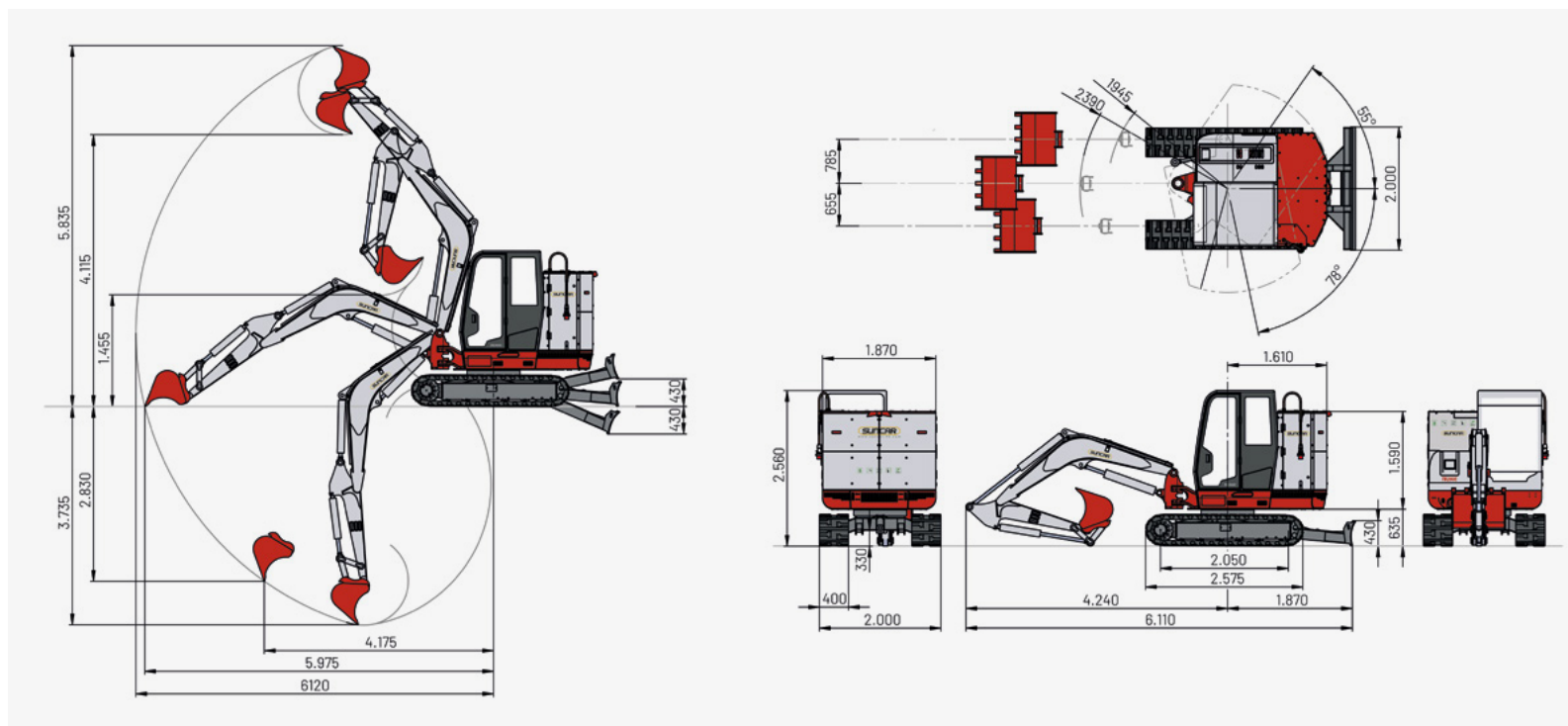
AUXILIARY CONTROL CIRCUITS

1 st control circuit hydraulic breaker (l/min) adjustable flow rate	102,2
2 nd control circuit grabber (l/min) adjustable flow rate	43,9
3 rd control circuit quick change plate (l/min)	16,2
4 th control circuit HUPPTilt (l/min) adjustable flow rate	43,9



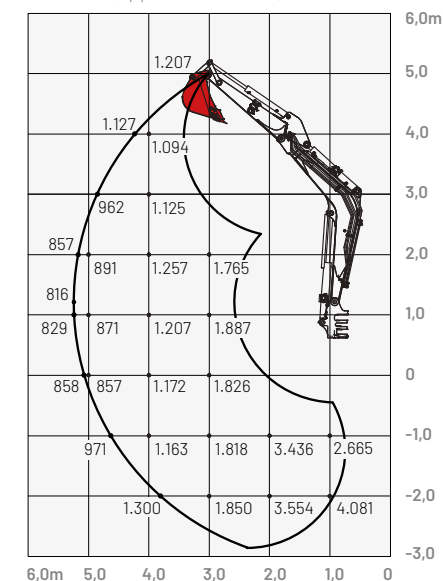
- 01 Battery monitoring with heating and cooling system to increase the battery's lifespan.
- 02 The TB260E can be charged with a CEE63 (CEE32 or CEE16 with adapter) connector, which can be found on every construction site. The charging plug can be easily stored during operation.
- 03 Control display indicating operating data such as engine speed, engine hours, battery charge level and remaining charging time.
- 04 Large maintenance hatches for optimal access to engine, pump and hydraulics.
- 05

Dimensions (mm)



Lifting load (kg)

Forward (upper dozer blade)



The loads in the diagrams (on the left) are within 87% of the hydraulic lifting load and within 75% of the tipping load.

AUSTRIA (AT)

Huppenkothen GmbH

Bundesstraße 117 / 6923 Lauterach

T +43 50 663 400

info@huppenkothen.com

The complete
Huppenkothen
product range

