



TAKEUCHI

TB20e

Battery-powered electric excavator with canopy

The battery-powered TB20e electric mini excavator is ideal for use in areas with noise and emission restrictions.

In residential areas, in and around schools or hospitals, in environmental zones or on night-time construction sites.

With the TB20e, you can work efficiently, quietly and climate-friendly anywhere.

- » No exhaust emissions – ideal for indoor areas and low emission zones
- » Significantly lower noise levels than combustion engines – ideal outside normal working hours
- » Permanent torque ensures livelier driving and better hydraulic performance
- » Lower maintenance costs due to 1000 h service interval
- » Battery operation without power supply cable. Cable operation also possible, e.g. stationary in demolition
- » Flexible charging options: Lithium-ion battery can be charged at any 230 V or 400 V socket



For three hours, two days or a whole year – if you need it for your construction site, you can **rent and buy** your TB20e from us.

www.huppenkothén.com



Huppenkothen added-value equipment:

There is additional equipment that everyone wants.

You therefore get all as standard from Huppenkothen.
This makes your excavator more effective, faster and more comfortable.

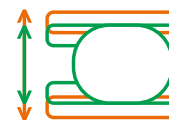
Put simply – added value.



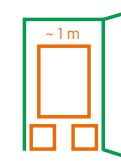
Exclusive
additional equipment



Emission-free



Variable
track width



Compact

CANOPY AND COMFORT EQUIPMENT

Canopy (ISO12117-2) / OPG (ISO10262 Level I) / TOPS (ISO12117)

4,3" multifunction color display

Suspended comfort seat, PVC covered

HFM Basic (HUPPIFleetManagement) – telematics system with 4 year term of use, extended for additional charge

ECO mode – to increase economic efficiency

TECHNICAL AND SAFETY EQUIPMENT

Spring-loaded accumulator on parking brake

Spring-loaded accumulator on slew brake

Pressure accumulator for pressure relief of hydraulic circuits and emergency boom lowering

Acoustic overload warning device (EN474-5)

LED worklights

2 x canopy at front, 1 x canopy at rear, 1 x boom

Storage compartment with on-board toolkit

Dozer blade with extensions – depending on track width

HYDRAULICS

3 hydraulic auxiliary circuits, 2 of which have proportional control

1st hydraulic auxiliary circuit, with proportional control – max. 34 l/min

2nd hydraulic auxiliary circuit, with proportional control – max. 11 l/min

3rd hydraulic auxiliary circuit, for hydraulic quick change plate HUPPlate H

Hydraulic track width adjustment – for more stability

Auto-Tank – depressurised return flow for breaker operation

Hydraulic tank ventilation

Pilot-opened load-holding valve on boom and arm cylinder

Optional additional
equipment and services

HUPPTronic

Digital assistance for excavator operators – economical, comfortable and intuitive to use.

/

HUPPIWarranty

Extended premium warranty package with all-round protection.

/

HUPPIFleetManagement

An eye on every machine at all times with fleet management. First 4 years included in purchase price.



MAIN DIMENSIONS	
Service weight* (kg)	2.025
Total width (mm)	985 / 1.300**
Overall height (mm)	2.280
Transport length - dozer blade at the rear (mm)	4.050
Digging depth (mm)	2.390
Reach (mm)	4.090
Arm length (mm)	1.130
Tail swing radius (mm)	1.075
Tracks	Rubber
Track width (mm)	230
Ground contact (mm)	1.155
Ground pressure (kg/cm ²)	0,33
Ground clearance (mm)	205
Dozer blade dimensions (mm)	980 (1.300**) x 310

* Machine weight + HUPPTilt + HUPPPlate + medium size bucket + half a tank of diesel

** max. track width

BATTERY SYSTEM

Battery	Lithium-ion battery	
Battery capacity (kWh)	24,7	
Nominal voltage (V)	73	
Battery life depending on application (h)	up to 8	
Charging	onboard	offboard
Charging cable plug	16 A 230 V	32 A 400 V
20 - 80%	6	2
0 - 100%	10	4
Charging power	3 kW (230 V 16 A)	9,7 kW (340 - 460 V 18,4 A)

Electric motor	Main motor	Auxiliary motor
Rated power (kW)	12,6	4,5
Nominal voltage (V)	73	73
Nominal current (A)	184	70
Maximum speed (rpm)	3.900	2.880
Max. Torque (Nm)	54	15
Environmental pollution	emission-free	

WORK PERFORMANCE

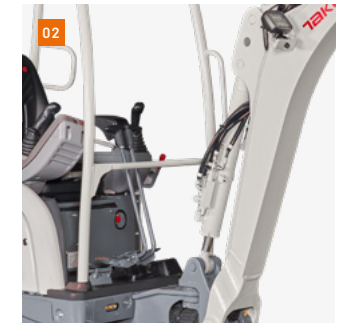
Travel speed (km/h)	2,1 (1 st gear) / 4,0 (2 nd gear)
Slew speed (rpm)	7,6
Gradeability (degrees/%)	15 / 27
Boom swing angle l/r (°)	78 / 49
Digging force bucket (kN)	13,7
Digging force arm (kN)	8,1
Digging force boom (kN)	7,4

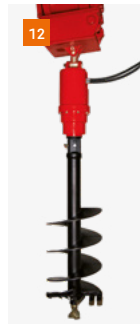
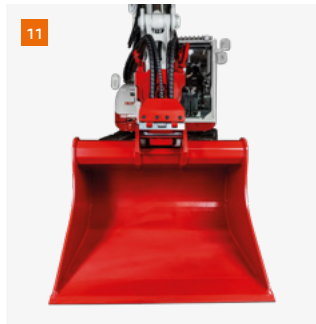
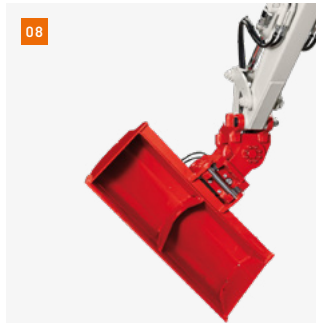
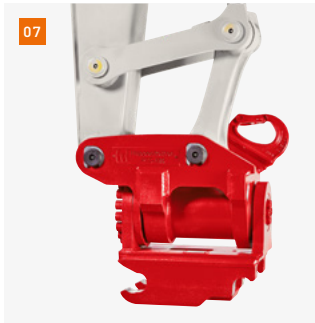
HYDRAULIC SYSTEM

Hydraulic pumps	2 x gear pump
Pump pressure (bar)	206 x 196
Flow rate (l/min)	50,7 x 10
Hydraulic tank (l)	14,1 (tank) / 24 (total)
Slew motor type	Axial piston motor, rigid
Travel motor type	Axial piston motor, variable

AUXILIARY CONTROL CIRCUITS

1 st control circuit hydraulic breaker (l / min)	34
2 nd control circuit Powertilt / grab (l / min)	11

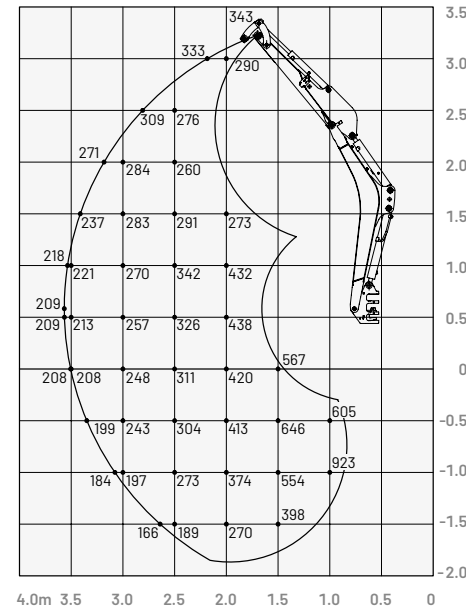




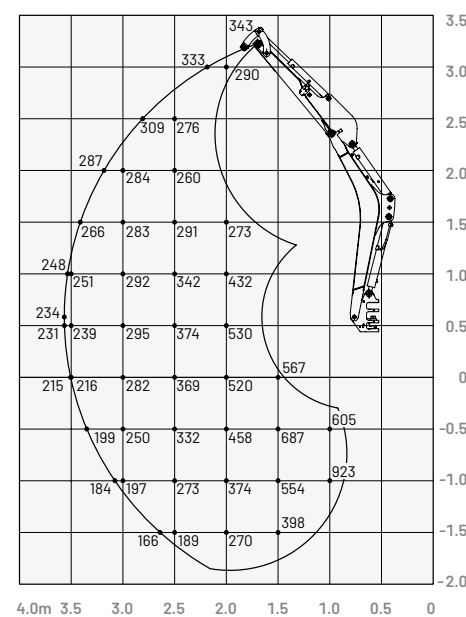
- 01 Ergonomic workplace for fatigue-free work.
- 02 Boom cylinder is designed as a neck cylinder and offers optimum protection even during demolition work.
- 03 Lockable storage compartment for grease gun.
- 04 Fast charging function
- 05 Onboard charger for charging at any 230 V household socket
- 06 Battery isolator switch and 12 V starter battery are easily accessible
- 07 HUPPTilt tilt device with hydraulic quick change plate HUPPPlate H
- 08 HUPPTilt with fixed trench bucket
- 09 HUPPBear 20 hydraulic breaker
- 10 HUPPGrip universal grabber U20 II with HUPPTilt
- 11 HUPPTilt with hydraulic quick change plate HUPPPlate H, digging bucket can be mounted as high bucket
- 12 Earth drill - X2500

Lifting load (kg)

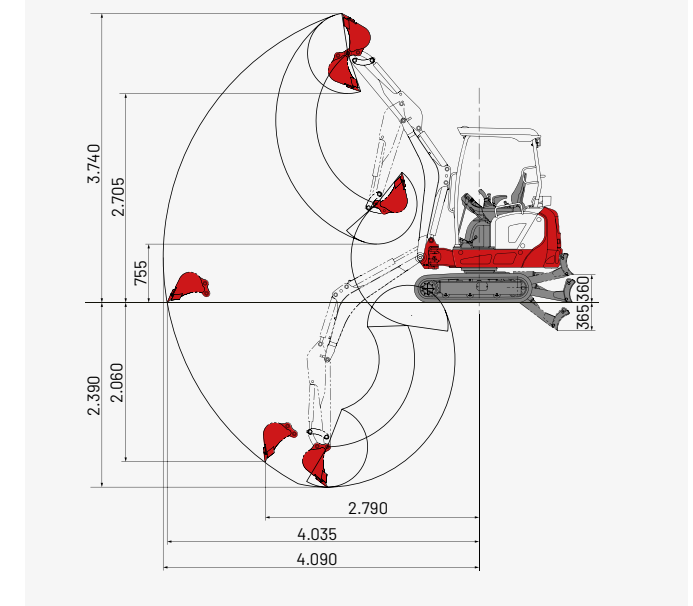
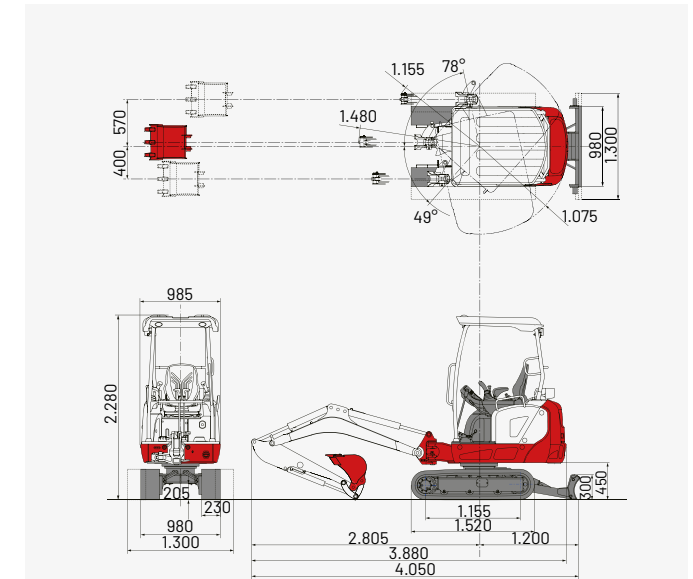
Forward (upper dozer blade)



To the rear



Dimensions (mm)



The loads in the diagrams on the left are within 87% of the hydraulic lifting load and within 75% of the tipping load.

Huppenkothen – your construction site, your partner, your success!

If you're looking to buy or rent a construction machine, if quality is important to you and you have no time to lose, then you've come to the right place with Huppenkothen. We provide all you need for your construction site. If you have any questions:

We are always available.

42

Locations

410

Employees

4.500+

Machines

100 %

Service

AUSTRIA (AT)

/

Huppenkothen GmbH

Bundesstraße 117 / 6923 Lauterach

T +43 50 663 400

info@huppenkothen.com

The complete
Huppenkothen
product range

