



TAKEUCHI

TB395W V

Mobile excavator with 2-piece-boom

TB395W V

TB395W V 4WS with 4-wheel-steering

TB395W V-P with outriggers

TB395W V-P 4WS with outriggers and 4-wheel-steering

Whether on narrow construction sites in urban areas, in traffic route construction or for house connections – our mobile excavator Takeuchi **TB395W V** with 2-piece-boom can be used **everywhere flexibly**. You don't have to wait for a transport vehicle, because you simply drive yourself to the next job site. This saves time and money. The optional 4-wheel steering makes our 11 t wheeled excavator even more compact and manoeuvrable and reduces its turning circle.



- » 1st hydraulic circuit, with proportional control with 120 l/min High Flow
- » Most important machine functions can be operated intuitively via the 8" color touch display and the jog-dial control
- » Armrests individually height-adjustable via quick release – for maximum ergonomics
- » 2-pc-boom with 2 adjustment cylinders – for a larger working range
- » Available in 4 versions:
TB395W V
TB395W V 4WS with 4-wheel-steering
TB395W V-P with outriggers
TB395W V-P 4WS with outriggers and 4-wheel-steering



New multifunction joysticks:
completely separate control
of the 4 hydraulic circuits



**For three hours, two days
or a whole year** – if you need
it for your construction site,
you can **buy and rent** your
TB395W V(-P) from us.

www.huppenkothén.com



Huppenkothen added-value equipment:

There is additional equipment that everyone wants.
You therefore get all as standard from Huppenkothen.
This makes your excavator more effective, faster and more comfortable.

Put simply – added value.

HYDRAULICS

4 hydraulic auxiliary circuits, 3 of which have proportional control

Flow rates and pressure adjustable on the display

1st circuit: 3 memories, 2nd/4th circuit: 1 memory

1st hydraulic auxiliary circuit, with proportional control – max. 120 l / min
High Flow

2nd hydraulic auxiliary circuit, with proportional control – max. 55 l / min

3rd hydraulic auxiliary circuit, for hydraulic quick change plate HUPPlate H

4th hydraulic auxiliary circuit, with proportional control – max. 55 l / min

Multifunction joysticks: completely separate control of the 4 hydraulic circuits

Detent Mode – breaker line continuous operation

Auto-Tank – depressurised return flow for breaker operation

Automatic pressure relief of control circuits when quick change plate is actuated

Power-controlled load-sensing pump – for more efficiency

Hydraulic tank ventilation

Pilot-opened load-holding valve on boom, arm and 2-piece-boom cylinder

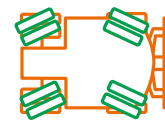
End position damping at boom, arm and swing cylinder



Exclusive additional
equipment



Powerful



4-wheel steering (4WS)
(optional)



Adjustable
hydraulic pressure

CAB WITH COMFORT EQUIPMENT

Comfort cabin including folding roof guard ROPS ISO12117-2 /
OPG ISO10262 Level I / TOP GUARD ISO10262 Level II

8" multifunction colour touch display

Jog-dial control – for intuitive operation

Electronically controlled air conditioning with 4 outlet nozzles

Bluetooth DAB radio

Microphone input for handsfree set

Air suspension comfort seat with seat heating

HFM (HUPPIFleetManagement) – telematics system with 4 year
term of use, extended for additional charge



ECO mode – to increase economic efficiency

Automatic idle speed control – optimised fuel consumption

Sun shield and rain guard

TECHNICAL AND SAFETY EQUIPMENT

Double air filter – additional protection for the engine

Hydraulic fan drive for radiator

2-pc-boom with 2 cylinders

Spring-loaded accumulator on parking brake

Spring-loaded accumulator on slew brake

Electric refuelling pump

Pressure accumulator for pressure relief of hydraulic circuits and
emergency boom lowering

2 storage compartments with on-board toolkit

Acoustic overload warning device (EN474-5)

Auto-Cruise – cruise control

External front axle hub brake

Differential lock

Rear view camera – for more safety

LED worklights

1 x cab at front, 1 x cab at rear, 1 x engine hood at front, 1 x boom

Road lighting

Socket on cab roof for rotary beacon

Outriggers (only TB395W V-P and TB395W V-P 4WS)

Mud Guards (optional)

**Optional additional
equipment and services**

HUPPLub

Huppenkothen central lubrication
system to ensure everything runs
even more smoothly.

/

HUPPTronic

Modular assistance systems:
Digital support for the excavator
operator – economical, convenient
and intuitive to use.

/

HUPPIWarranty

Extended premium warranty
package with all-round protection.

MAIN DIMENSIONS	
Service weight* (kg) (TB395W V)	10.740
Service weight* (kg) (TB395W V-P)	11.160
Total width (mm)	2.380
Overall height (mm)	3.055
Transport length - dozer blade at the rear (mm)	6.555
Digging depth (mm)	4.095
Reach (mm)	7.675
Arm length (mm)	2.130
Tail swing radius (mm)	1.690
Tyres	8 x 275/70R22.5
Wheelbase (mm)	2.200
Ground clearance (mm)	320
Dozer blade dimensions (mm)	2.300 x 500

* Machine weight + HUPPTilt + HUPPPlate + medium size bucket + half a tank of diesel

ENGINE

Type	Deutz TCD3.6L4 4-cylinder Commonrail diesel engine, turbocharger, Stage V emission level
Exhaust aftertreatment	DPF, SCR and DOC
Rated output ISO14396 (kW)	85 kW @ 2.200 r.p.m.
Displacement (cm ³)	3.621
Fuel tank (l)	162
AdBluetank (l)	10

WORK PERFORMANCE

Travel speed (km/h)	29,1
Slew speed (rpm)	9,7
Gradeability (degrees/%)	35 / 70
Boom swing angle l/r (°)	68 / 59
Digging force bucket (kN)	58,9
Digging force arm (kN)	43,6
Digging force boom (kN)	39,7

HYDRAULIC SYSTEM

Hydraulic pumps	Power-controlled load-sensing pump + 3 x gear pump + 1 x HST
Pump pressure (bar)	275 x 35 x 260 x 200 x 140 x 350 x 24
Flow rate (l/min)	176 x 15,4 x 59,6 x 39,8 x 36,5 x 156 x 43,1
Hydraulic tank (l)	91,6 (tank) / 205 (total)
Slew motor type	Axial piston motor, rigid
Travel motor type	Axial piston motor, variable

AUXILIARY CONTROL CIRCUITS

1 st hydraulic circuit hydraulic breaker (l / min) flow rates and pressure adjustable 3 memories	120
2 nd / 4 th hydraulic circuit Powertilt / grab (l / min) flow rate and pressure adjustable 1 memory	55

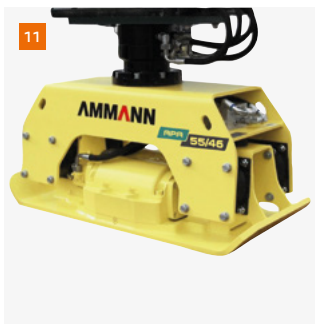
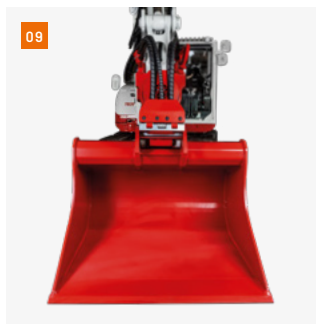
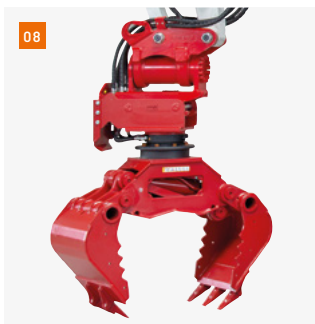
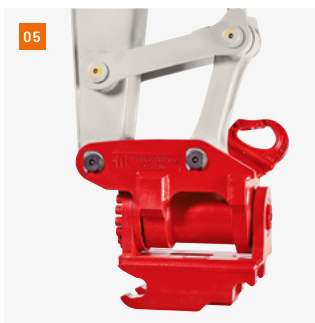


01 Sound-damped, low-vibration comfort cab with air suspension comfort seat with seat heating. Ergonomic joysticks that swing with the driver's seat. These multi-function joysticks allow a wide range of configuration options and individual key/rocker assignment. Innovative steering column adjustment.


02 Optimally arranged controls with large, clear and user-friendly 8" multi-function color touch display. The rear view camera is displayed automatically.

03 Generous maintenance hatches for optimum accessibility to hydraulic and fuel maintenance components, battery and radiator.

04 Pictured is the TB395W V-P 4WS with outriggers for maximum stability and 4-wheel steering for a smaller turning circle. With optional mudguards.

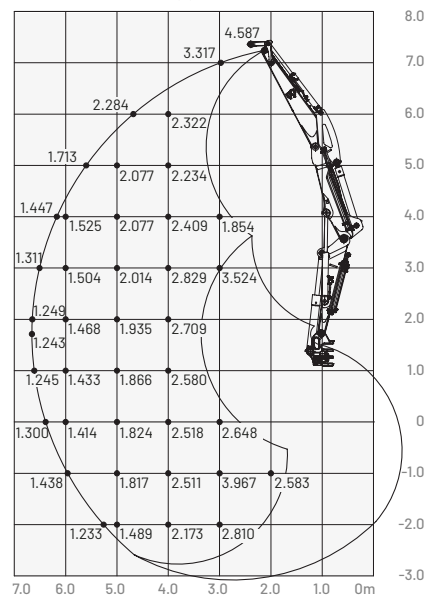


- 05 HUPPTilt tilt device with hydraulic quick change plate HUPPPlate H
- 06 HUPPQuick quick coupling system: Hydraulic connections are connected automatically during the quick coupling process
- 07 Hydraulic breaker HUPPBreek 110 with HUPPQuick
- 08 Universal grabber HUPPGrip 110 with HUPPTilt and HUPPQuick quick coupling system
- 09 HUPPTilt with HUPPPlate H, digging bucket mounted as high bucket
- 10 Drum Cutter - Erkat ER 250-4
- 11 Add-on compactor - Ammann APA5546
- 12 Mulcher - Gordini TCR125

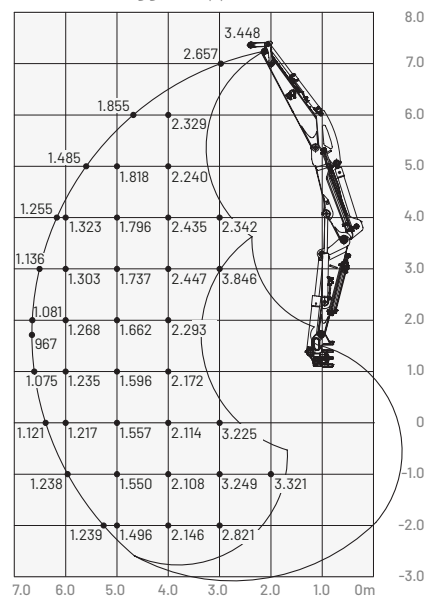
 More accessories at
**[huppenkothen.com/
excavator-accessories](https://huppenkothen.com/excavator-accessories)**

Lifting load forward (kg)

With outriggers (upper dozer blade)

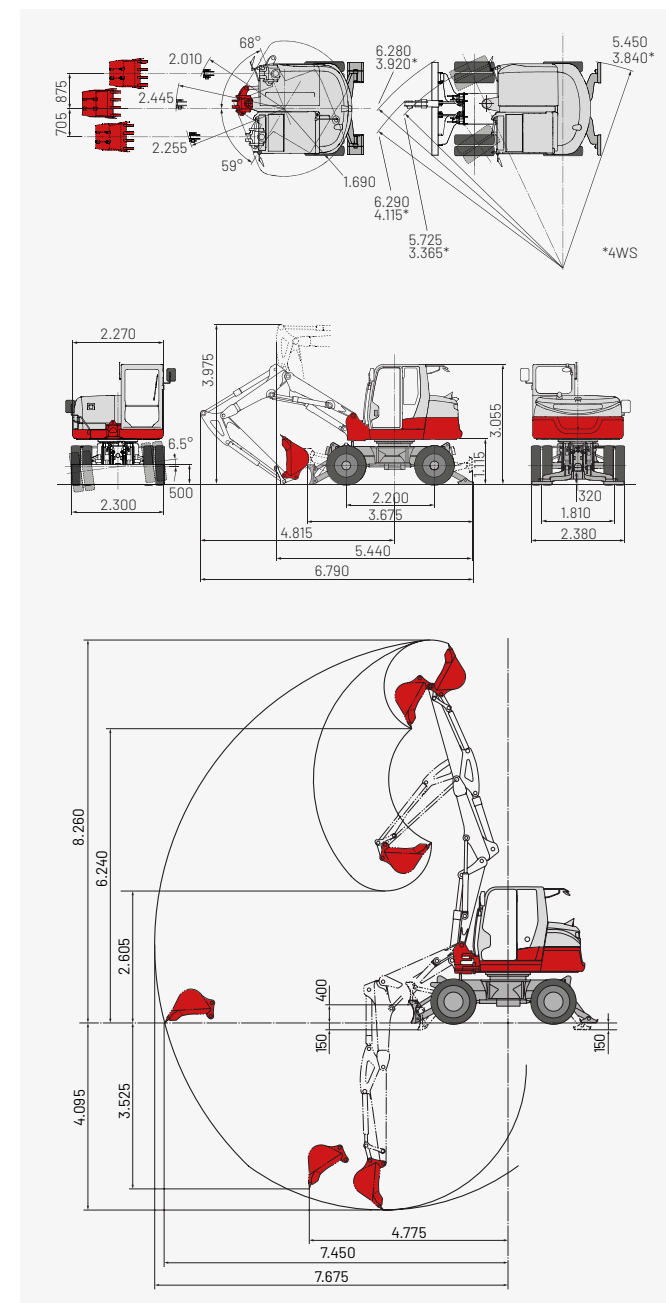


Without outriggers (upper dozer blade)



The loads in the diagrams (on the left) are within 87% of the hydraulic lifting load and within 75% of the tipping load.

Dimensions with outriggers (mm)



Huppenkothen – your construction site, your partner, your success!

If you're looking to buy or rent a construction machine, if quality is important to you and you have no time to lose, then you've come to the right place with Huppenkothen. We provide all you need for your construction site. If you have any questions:

We are always available.

42

Locations

410

Employees

4.500+

Machines

100 %

Service

AUSTRIA (AT)

/

Huppenkothen GmbH

Bundesstraße 117 / 6923 Lauterach

T +43 50 663 400

info@huppenkothen.com

The complete
Huppenkothen
product range

