

**TAKEUCHI**

**TB2150**

Crawler excavator with boom offset



With the standard rear excavator **TB2150**, with swivel frame and side offset, digging parallel to a wall or masonry is easily possible. The TB2150 is a 16-tonne excavator and the largest in the TAKEUCHI family, but it works like a miniexcavator.



- » 1<sup>st</sup> hydraulic circuit, with proportional control with 224 l/min High Flow
- » Available with rubber or steel crawlers. Crawlers can be interchanged at any time.
- » LED worklights for optimum illumination of working area



For three hours, two days or a whole year - if you need it for your construction site, you can **buy and rent** your TB2150 from us.

[www.huppenkothen.com](http://www.huppenkothen.com)



# Huppenkothen added-value equipment:

**There is additional equipment that everyone wants.**

You therefore get all as standard from Huppenkothen. This makes your excavator more effective, faster and more comfortable.

**Put simply – added value.**

## **HYDRAULICS**

**4 hydraulic auxiliary circuits**, 3 of which have proportional control

**Flow rates and pressure adjustable on the display**

1<sup>st</sup> circuit: 3 memories, 2<sup>nd</sup>/4<sup>th</sup> circuit: 1 memory

**1<sup>st</sup> hydraulic auxiliary circuit, with proportional control** – max. 224 l/min

**2<sup>nd</sup> hydraulic auxiliary circuit, with proportional control** – max. 54,8 l/min

**3<sup>rd</sup> hydraulic auxiliary circuit**, for hydraulic quick change plate HUPPlate H

**4<sup>th</sup> hydraulic auxiliary circuit, with proportional control** – max. 54,8 l/min

**Detent Mode** – breaker line continuous operation

**Auto-Tank** – depressurised return flow for breaker operation

**Automatic pressure relief of control circuits** when quick change plate is actuated

**Hydraulic tank ventilation**

**Pilot-opened load-holding valve** on boom cylinder and arm cylinder

**End position damping** at boom, arm and swing cylinder



Exclusive additional  
equipment



Powerful



Spacious and comfortable  
operator cabin



Adjustable  
powerhouse

## **CAB WITH COMFORT EQUIPMENT**

**Comfort cabin** including roof guard ROPS (ISO12117-2) / OPG (ISO10262 Level II)

**7" multifunction colour display**

**Electronically controlled air conditioning** with 4 outlet nozzles and air-conditioned cup holder

**Heating and radio with AUX & USB**

**Air suspension comfort seat** with seat heating

**HFM (HUPPIFleetManagement)** – telematics system with 4 year term of use, extended for additional charge

**ECO mode** – to increase economic efficiency

**Automatic idle speed control** – optimised fuel consumption

**Sun shield**

**Rain guard**

## **TECHNICAL AND SAFETY EQUIPMENT**

**Double air filter** – additional protection for the engine

**Boom with 2 lifting cylinders**

**Spring-loaded accumulator** on parking brake

**Spring-loaded accumulator** on slew brake

**Electric refuelling pump**

**Pressure accumulator** for pressure relief of hydraulic circuits and emergency boom lowering

**Storage compartment** with on-board toolkit

**Acoustic overload warning device** (EN474-5)

**Travel alarm**

**Rear view camera** – for more safety

**LED worklights**– 2 x cab at front, 1 x cab at rear, 1 x engine hood at front, 1 x boom

**Socket on cab roof** for rotary beacon

**Optional additional  
equipment and services**

### **HUPPLub**

Huppenkothen central lubrication system to ensure everything runs even more smoothly.

/

### **HUPPTronic**

Modular assistance systems: Digital support for the excavator operator – economical, convenient and intuitive to use.

/

### **HUPPIWarranty**

Extended premium warranty package with all-round protection.

/

### **HUPPIFleetManagement**

An eye on every machine at all times with fleet management. First 4 years included in purchase price.



TECHNICAL DATA	
Engine	DEUTZ TCD3.6L4 4-cylinder Commonrail diesel engine, turbocharger, 85 kW @ 2.200 rpm (ISO14396) Stage V emission level with DPF, SCR and DOC
Dimensions (mm)	8.165 x 2.500 x 2.960
Digging depth (mm)	5.195
Reach (mm)	8.520
Arm length (mm)	2.320
Tail swing radius (mm)	2.000

MAIN DIMENSIONS	
Service weight* (kg)	15.850
Total width (mm)	2.500
Overall height (mm)	2.960
Transport length - dozer blade at the rear (mm)	8.165
Boom swing angle l / r (°)	77 / 53

\* Machine weight + PT + quick change plate + medium size bucket + half a tank of diesel

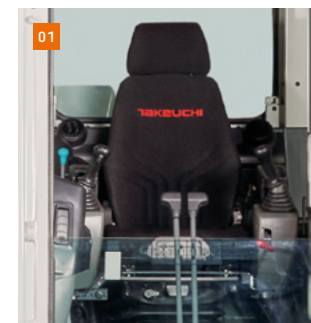
CHASSIS	
Tracks	Rubber
Track width (mm)	500
Ground contact (mm)	2.895
Ground pressure (kg/cm <sup>2</sup> )	0,471
Ground clearance (mm)	475
Dozer blade dimensions (mm)	2.490 x 550

WORK PERFORMANCE	
Travel speed (km/h)	3,1 (1 <sup>st</sup> gear) / 5,5 (2 <sup>nd</sup> gear)
Slew speed (rpm)	10,8
Gradeability (degrees / %)	35 / 70
Digging force bucket (kN)	96,3
Digging force arm (kN)	59,8

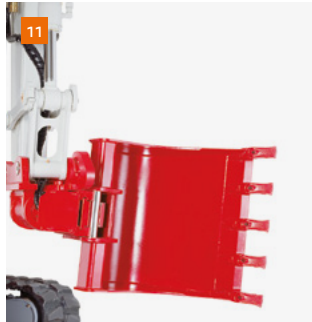
HYDRAULIC SYSTEM	
Hydraulic pumps	2 x variable axial piston pump + 2 x gear pump
Pump pressure (bar)	343 x 343 x 236 x 39
Flow rate (l/min)	112 x 112 x 54,8 x 20
Hydraulic tank (l)	107 (Tank) / 160 (total)
Slew motor type	Axial piston motor, rigid
Travel motor type	Axial piston motor, variable

AUXILIARY CONTROL CIRCUITS	
1 <sup>st</sup> control circuit hydraulic breaker (l/min) 3 memories for flow rates and pressure	224
2 <sup>nd</sup> /4 <sup>th</sup> control circuit Powertilt/grab (l/min) 1 memory for flow rates and pressure	54,8

- 01 Sound-damped, low-vibration comfort cab with air suspension comfort seat with seat heating.
- 02 Robust boom swing assy with specially protected hose guide and hydraulic boom swing; lifting, arm and swing cylinder with end position damping.
- 03 Generous maintenance hatches for service-friendly access to hydraulic and fuel maintenance components.
- 04 Optimally arranged controls with large, clear and user-friendly display with rear view camera overlay.
- 05 4 hydraulic circuits as standard, 3 of which have proportional control; adjustable flow rates and pressure.
- 06 Generous maintenance hatch guarantees optimum accessibility to the battery and radiator cleaning.







**07** Tilt-rotator HUPPTilt R with HUPPLate H

**08** HUPPQuick system: Hydraulic connections are connected automatically during the quick coupling process.

**09** Hydraulic breaker HUPPBreak 160S with HUPPQuick

**10** Universal grabber HUPPGrip 160 with HUPPTilt and HUPPQuick quick coupling system

**11** HUPPTilt with HUPPLate H, digging bucket mounted as high bucket

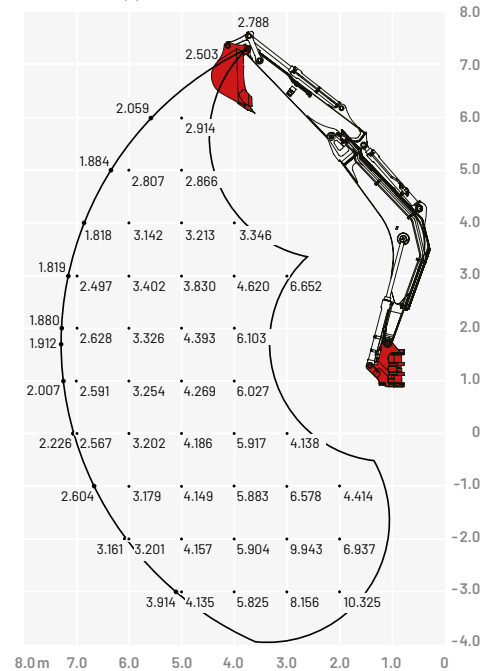
**12** Concrete buster - Epiroc CB950

**13** Add-on compactor - Ammann APA75/74

**14** Drum Cutter - Erkat ER600

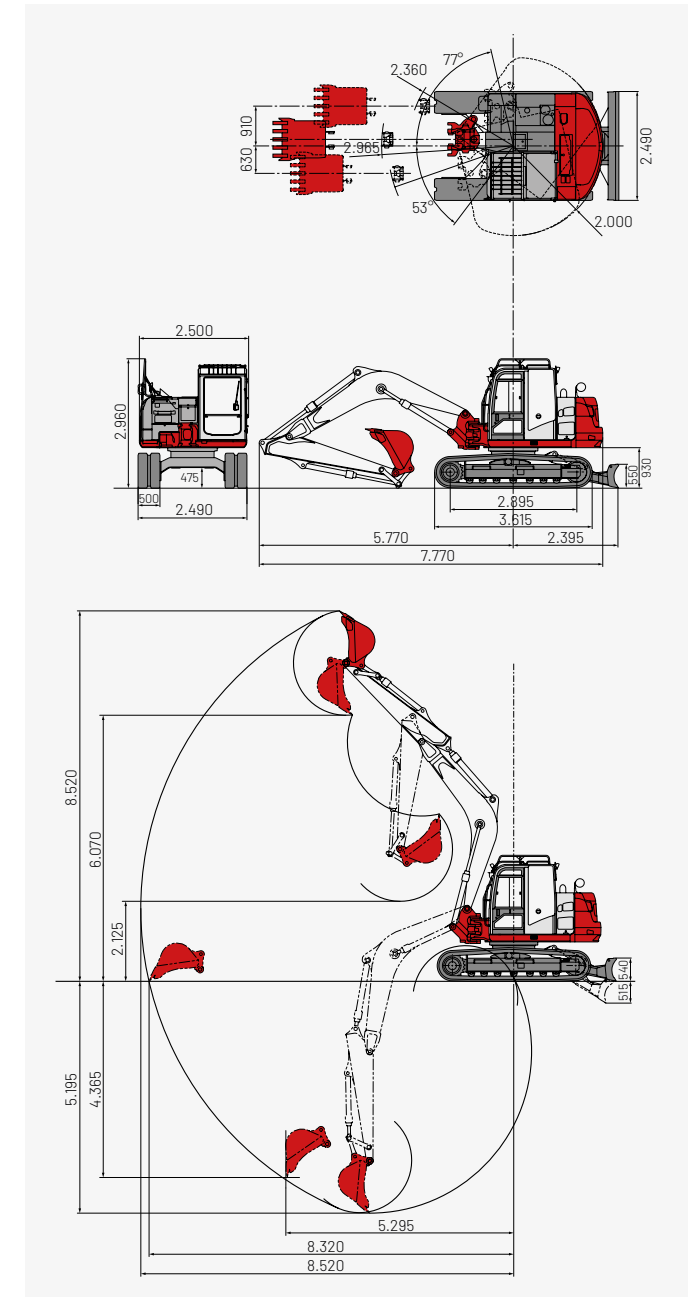
## Lifting load (kg)

### Forward (upper dozer blade)



The loads in the diagram are within 87% of the hydraulic lifting load and within 75% of the tipping load.

## Dimensions (mm)



More accessories at  
**[huppenkothen.com/  
excavator-accessories](http://huppenkothen.com/excavator-accessories)**

## Huppenkothen – your construction site, your partner, your success!

If you're looking to buy or rent a construction machine, if quality is important to you and you have no time to lose, then you've come to the right place with Huppenkothen. We provide all you need for your construction site. If you have any questions:

**We are always available.**

**42**

Locations

**410**

Employees

**4.500+**

Machines

**100 %**

Service

### AUSTRIA (AT)

/

**Huppenkothen GmbH**

Bundesstraße 117 / 6923 Lauterach

T +43 50 663 400

info@huppenkothen.com

The complete  
Huppenkothen  
product range

