

TAKEUCHI

TB290-2 (V)

Midi excavator with monoblock or 2-piece-boom



The Takeuchi **TB290-2 (V)** midi-excavator is the perfect all-rounder for all requirements. ECO mode, load-sensing hydraulics and automatic idle make our 9-tonner an extremely economical machine. With adjustable and programmable flow rates with max. 100 l on the first control circuit, the TB290-2 (V) offers maximum flexibility.



- » 1st hydraulic circuit, with proportional control with 100 l/min High Flow
- » Rear view camera with automatic display in the multifunction colour display
- » 6 LED worklights for optimum illumination of working area
- » Available in 2 versions: TB290-2 with monobloc boom and TB290-2 V with 2-pc-boom.



For three hours, two days
or a whole year - if you need
it for your construction site,
you can **buy and rent** your
TB290-2 (V) from us.

www.huppenkothén.com



Huppenkothen added-value equipment:

There is additional equipment that everyone wants.
You therefore get all as standard from Huppenkothen.
This makes your excavator more effective, faster and more comfortable.

Put simply – added value.

HYDRAULICS

4 hydraulic auxiliary circuits, 3 of which have proportional control

Flow rates adjustable on the display

1st circuit: 3 memories, 2nd/4th circuit: 1 memory

1st hydraulic auxiliary circuit, with proportional control – max. 100 l/min

2nd hydraulic auxiliary circuit, with proportional control – max. 60,6 l/min

3rd hydraulic auxiliary circuit, for hydraulic quick change plate HUPPlate H

4th hydraulic auxiliary circuit, with proportional control – max. 60,6 l/min

Detent Mode – breaker line continuous operation

Auto-Tank – depressurised return flow for breaker operation

Automatic pressure relief of control circuits when quick change plate is actuated

Power-controlled load-sensing pump – for more efficiency

Hydraulic tank ventilation

Pilot-opened load-holding valve on boom cylinder and arm cylinder
(TB290-2 V; also 2-piece-boom)

End position damping at boom, arm and swing cylinder



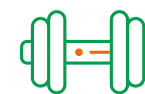
Exclusive additional
equipment



Powerful



Efficient



Adjustable
powerhouse

CAB WITH COMFORT EQUIPMENT

Comfort cabin including roof guard ROPS (ISO12117-2) /
OPG (ISO10262 Level I) / FOPS (ISO10262 Level II)

5,7" multifunction colour display

Rear window heating with wiper

Electronically controlled air conditioning with 4 outlet nozzles

Cupholder with cooling mode

Radio Bluetooth with USB

Air suspension comfort seat with seat heating

HFM (HUPPIFleetManagement) – telematics system with 4 year term of use,
extended for additional charge

ECO mode – to increase economic efficiency

Automatic idle speed control – optimised fuel consumption

Sun shield and rain guard

TECHNICAL AND SAFETY EQUIPMENT

Double air filter – additional protection for the engine

Automatic hydraulic track tensioning

Boom with 2 lifting cylinders (only TB290-2)

Spring-loaded accumulator on parking brake

Spring-loaded accumulator on slew brake

Electric refuelling pump

Pressure accumulator for pressure relief of hydraulic circuits and
emergency boom lowering

Storage compartment with on-board toolkit

Acoustic overload warning device (EN474-5)

Rear view camera – for more safety

LED worklights

2 x cab at front, 2 x cab at rear, 1 x engine hood at front, 1 x boom

Socket on cab roof for rotary beacon

**Optional additional
equipment and services**

HUPPLub

Huppenkothen central lubrication
system to ensure everything runs
even more smoothly.

/

HUPPTronic

Digital assistance for excavator
operators – economical,
comfortable and intuitive to use.

/

HUPPIWarranty

Extended premium warranty
package with all-round protection.

/

HUPPIFleetManagement

An eye on every machine at all
times with fleet management.
First 4 years included in purchase
price.



MAIN DIMENSIONS	TB290-2	TB290-2 V
Service weight* (kg)	8.820	9.160
Total width (mm)	2.200	2.200
Overall height (mm)	2.550	2.550
Transport length - dozer blade at the rear (mm)	7.000	7.210
Digging depth (mm)	4.410	4.480
Reach (mm)	7.275	7.775
Arm length (mm)	1.960	2.130
Tail swing radius (mm)	1.650	1.685
Tracks	Rubber	Rubber
Track width (mm)	450	450
Ground contact (mm)	2.210	2.210
Ground pressure (kg/cm ²)	0,376	0,39
Ground clearance (mm)	370	370
Dozer blade dimensions (mm)	2.200 x 500	2.200 x 500

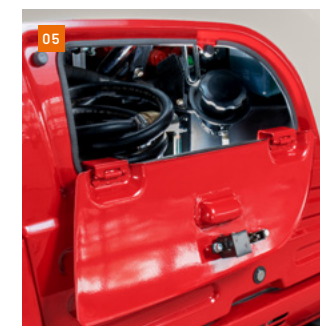
* Machine weight + PT + quick change plate + medium size bucket + half a tank of diesel

ENGINE	
Type	YANMAR 4TNV98CT 4-cylinder Commonrail diesel engine, turbocharger, Stage V emission level
Exhaust aftertreatment	DPF and DOC
Rated output ISO14396 (kW)	51,6 kW @ 2.000 r.p.m.
Displacement (cm ³)	3.318
Fuel tank (l)	128

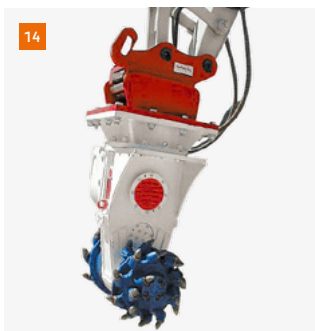
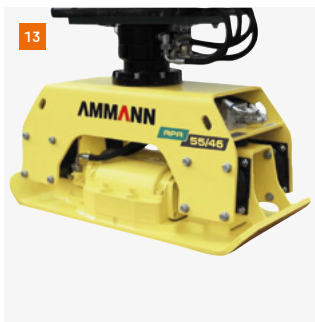
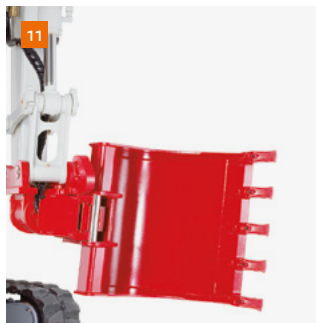
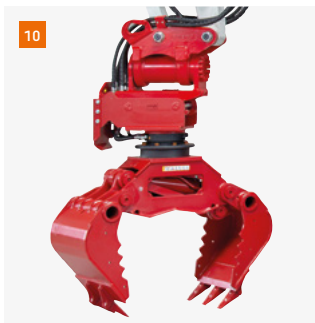
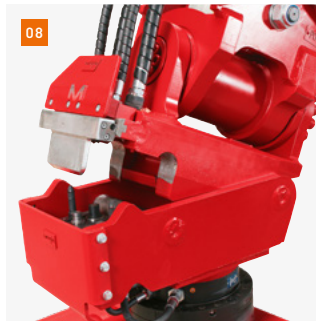
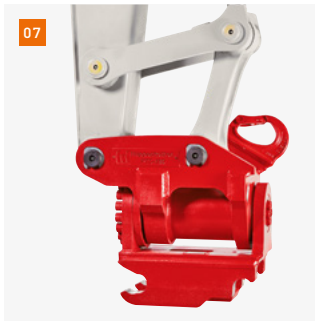
WORK PERFORMANCE	
Travel speed (km/h)	2,6 (1 st gear) / 5 (2 nd gear)
Slew speed (rpm)	10,3
Gradeability (degrees/%)	35 / 70
Boom swing angle l/r (°)	70 60
Digging force bucket (kN)	59,1
Digging force arm (kN)	TB290-2: 37,9 / TB290-2 V: 40
Digging force boom (kN)	46,2

HYDRAULIC SYSTEM	
Hydraulic pumps	1 x power-regulated load sensing pump + 2 x gear pump
Pump pressure (bar)	275 x 240 x 35
Flow rate (l/min)	224 x 60,6 x 16
Hydraulic tank (l)	73 (Tank) / 140 (total)
Slew motor type	Axial piston motor, rigid
Travel motor type	Axial piston motor, variable

AUXILIARY CONTROL CIRCUITS	
1 st control circuit hydraulic breaker (l / min) adjustable flow rate 3 memories for the flow rates	100
2 nd /4 th control circuit Powertilt / grab (l / min) adjustable flow rate 1 memory for the flow rate	60,6



- 01 Sound-damped, low-vibration comfort cab with air suspension comfort seat with seat heating. Ergonomic joysticks that swing with the driver's seat.
- 02 Rear view camera - for more safety
- 03 Optimally arranged controls with large, clear and user-friendly display made of tarnish-resistant laminated glass. The rear view camera is displayed automatically.
- 04 Robust boom swing assy with specially protected hose guide and hydraulic boom swing; lifting, arm and swing cylinder with end position damping.
- 05 Lockable refuelling flap for optimum access to refuelling pump and tank cap.
- 06 Generous maintenance hatches for optimum accessibility to hydraulic and fuel maintenance components, battery and radiator cleaning.



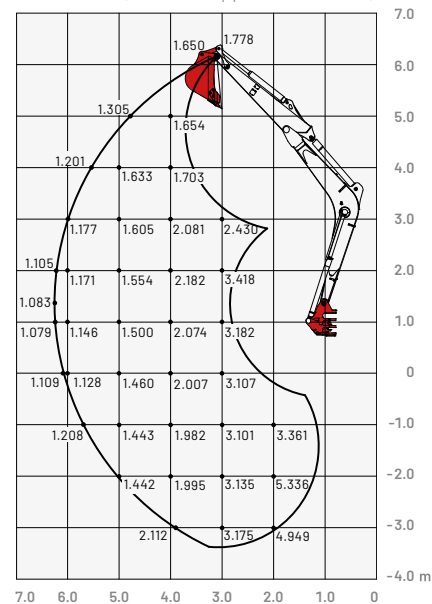
- 07** HUPPTilt tilt device with hydraulic quick change plate HUPPlate H
- 08** HUPPQuick quick coupling system: Hydraulic connections are connected automatically during the quick coupling process
- 09** HUPPBREAK 110 hydraulic breaker with HUPPQuick
- 10** HUPPGrip 110 universal grabber with HUPPTilt and HUPPQuick quick coupling system
- 11** HUPPTilt with HUPPlate H, digging bucket mounted as high bucket
- 12** Concrete buster - Epiroc CB750
- 13** Add-on compactor - Ammann APA55/46
- 14** Drum Cutter - Epiroc ER250



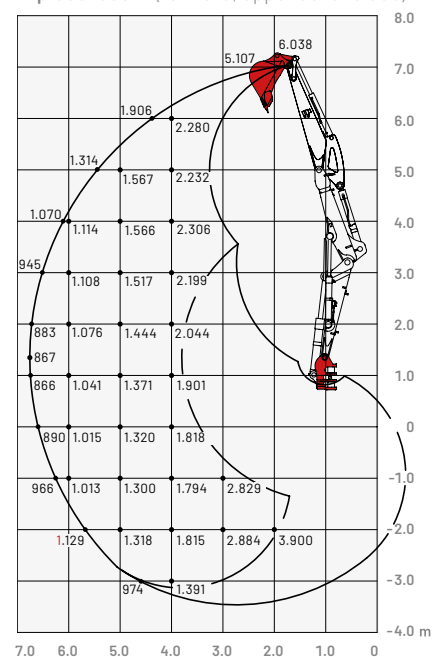
More accessories at
[huppenkothen.com/
 excavator-accessories](http://huppenkothen.com/excavator-accessories)

Lifting load (kg)

Monoblock (forward, upper dozer blade)



2-piece-boom (forward, upper dozer blade)



Huppenkothen – your construction site, your partner, your success!

If you're looking to buy or rent a construction machine, if quality is important to you and you have no time to lose, then you've come to the right place with Huppenkothen. We provide all you need for your construction site. If you have any questions:

We are always available.

42

Locations

410

Employees

4.500+

Machines

100 %

Service

AUSTRIA (AT)

/

Huppenkothen GmbH

Bundesstraße 117 / 6923 Lauterach

T +43 50 663 400

info@huppenkothen.com

The complete
Huppenkothen
product range

