



TAKEUCHI

TB370 (V)

Midi excavator with monoblock or 2-piece-boom

The Takeuchi **TB370 (V)** midi-excavator is the first model of a new generation of machines and scores with many high-tech features and state-of-the-art technology. The TB370 (V) has a completely separate 4th control circuit, controlled by new multi-function joysticks. These allow a wide range of configuration options and individual key/rocker assignment.



- » 1st hydraulic circuit, with proportional control with 120 l/min High Flow
- » Armrests individually height-adjustable via quick release – for maximum ergonomics
- » Most important machine functions can be operated intuitively via the 8" color touch display and the jog-dial control
- » 8 LED worklights including coming home function for optimum illumination of working area
- » Rear view camera – for more driving comfort and safety
- » Available in 2 versions: TB370 with monobloc boom and TB370 V with 2-pc-boom



New multifunction joysticks:
completely separate control
of the 4 hydraulic circuits

For three hours, two days
or a whole year – if you need
it for your construction site,
you can **buy and rent** your
TB370 (V) from us.

www.huppenkothén.com



Huppenkothen added-value equipment:

There is additional equipment that everyone wants.
You therefore get all as standard from Huppenkothen.
This makes your excavator more effective, faster and more comfortable.

Put simply – added value.

HYDRAULICS

4 hydraulic auxiliary circuits, 3 of which have proportional control

Flow rates adjustable on the display

1st circuit: 3 memories, 2nd/4th circuit: 1 memory

1st hydraulic auxiliary circuit, with proportional control – max. 120 l/min

2nd hydraulic auxiliary circuit, with proportional control – max. 46,6 l/min

3rd hydraulic auxiliary circuit, for hydraulic quick change plate HUPPlate H

4th hydraulic auxiliary circuit, with proportional control – max. 46,6 l/min

Detent Mode – breaker line continuous operation

Auto-Tank – depressurised return flow for breaker operation

Automatic pressure relief of control circuits when quick change plate is actuated

Power-controlled load-sensing pump – for more efficiency

Hydraulic tank ventilation

Pilot-opened load-holding valve on boom cylinder and arm cylinder
(TB370 V: also 2-piece-boom)

End position damping at boom, arm and swing cylinder



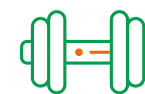
Exclusive additional
equipment



Powerful



Efficient



Adjustable
powerhouse

CAB WITH COMFORT EQUIPMENT

Comfort cabin including roof guard ROPS (ISO12117-2) /
OPG (ISO10262 Level I)

8" multifunction colour touch display

Electronically controlled air conditioning with 4 outlet nozzles

Bluetooth DAB radio

USB charging socket

Hands free set

Air suspension comfort seat – with head rest and seat heating

HFM (HUPPIFleetManagement) – telematics system with 4 year term of use,
extended for additional charge

ECO mode – to increase economic efficiency

Automatic idle speed control – optimised fuel consumption

Sun shield and rain guard

TECHNICAL AND SAFETY EQUIPMENT

Multifunction joysticks for separate control of the 4th hydraulic auxiliary
circuit

Double air filter – additional protection for the engine

Spring-loaded accumulator on parking brake

Spring-loaded accumulator on slew brake

Electric refuelling pump

Pressure accumulator for pressure relief of hydraulic circuits and
emergency boom lowering

Storage compartment with on-board toolkit

Acoustic overload warning device (EN474-5)

Rear view camera – for more safety

LED worklights

2 x cab at front, 2 x cab at rear, 1 x engine hood at front, 1 x boom,
1 x frame left, 1 x frame right

Socket on cab roof for rotary beacon

**Optional additional
equipment and services**

HUPPLub

Huppenkothen central lubrication
system to ensure everything runs
even more smoothly.

/

HUPPTronic

Digital assistance for excavator
operators – economical,
comfortable and intuitive to use.

/

HUPPIWarranty

Extended premium warranty
package with all-round protection.

/

HUPPIFleetManagement

An eye on every machine at all
times with fleet management.
First 4 years included in purchase
price.



| MAIN DIMENSIONS | TB370 | TB370 V |
|-------------------------------------------------|-------------|-------------|
| Service weight* (kg) | 7.050 | 7.420 |
| Total width (mm) | 2.100 | 2.100 |
| Overall height (mm) | 2.540 | 2.540 |
| Transport length - dozer blade at the rear (mm) | 6.380 | 6.325 |
| Digging depth (mm) | 3.885 | 4.110 |
| Reach (mm) | 6.500 | 6.905 |
| Arm length (mm) | 1.700 | 1.900 |
| Tail swing radius (mm) | 1.455 | 1.480 |
| Tracks | Rubber | Rubber |
| Track width (mm) | 400 | 400 |
| Ground contact (mm) | 2.050 | 2.050 |
| Ground pressure (kg/cm ²) | 0,377 | 0,398 |
| Ground clearance (mm) | 335 | 335 |
| Dozer blade dimensions (mm) | 2.100 x 430 | 2.100 x 430 |

* Machine weight + PT + quick change plate + medium size bucket + half a tank of diesel

| ENGINE | |
|---------------------------------|------------------------------------------------------------------------------------------------|
| Type | KUBOTA V2607-CR-TE5B 4-cylinder Commonrail diesel engine, turbocharger, Stage V emission level |
| Exhaust aftertreatment | DPF and DOC |
| Rated output ISO14396 (kW) | 42,4 kW @ 2.000 r.p.m. |
| Displacement (cm ³) | 2.615 |
| Fuel tank (l) | 110 |

| WORK PERFORMANCE | |
|---------------------------|---------------------------------------------------------|
| Travel speed (km/h) | 2,5 (1 st gear) / 4,7 (2 nd gear) |
| Slew speed (rpm) | 8,8 |
| Gradeability (degrees/%) | 30 / 58 |
| Boom swing angle l/r (°) | 79 / 51 |
| Digging force bucket (kN) | 48,4 |
| Digging force arm (kN) | 29,4 |
| Digging force boom (kN) | 37,8 |

| HYDRAULIC SYSTEM | |
|---------------------|-------------------------------------------------------|
| Hydraulic pumps | 1 x power-regulated load sensing pump + 2 x gear pump |
| Pump pressure (bar) | 245 x 240 x 35 |
| Flow rate (l/min) | 160 x 46,6 x 16 |
| Hydraulic tank (l) | 65,5 (Tank) / 139 (total) |
| Slew motor type | Axial piston motor, rigid |
| Travel motor type | Axial piston motor, variable |

| AUXILIARY CONTROL CIRCUITS | |
|-----------------------------------------------------------------------------------------------------------------------------------|------|
| 1 st control circuit hydraulic breaker (l / min) adjustable flow rate 3 memories for the flow rates | 120 |
| 2 nd /4 th control circuit Powertilt / grab (l / min) adjustable flow rate 1 memory for the flow rate | 46,6 |

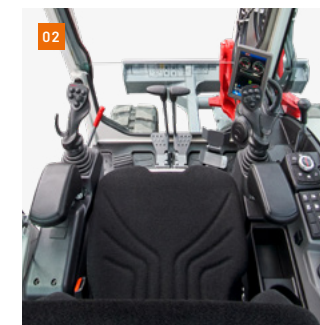
01 Robust boom swing assy with specially protected hose guide and hydraulic boom swing; lifting, arm and swing cylinder with end position damping.

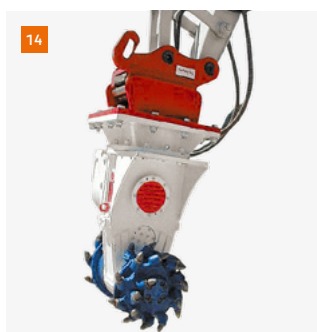
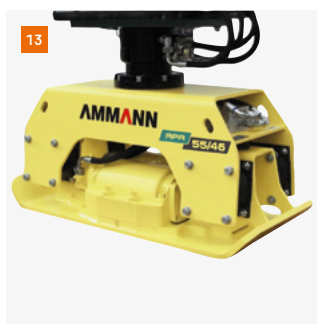
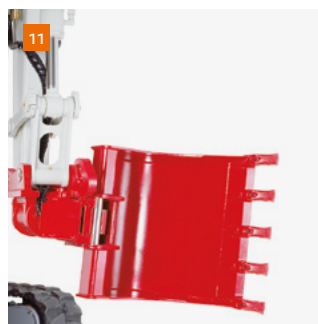
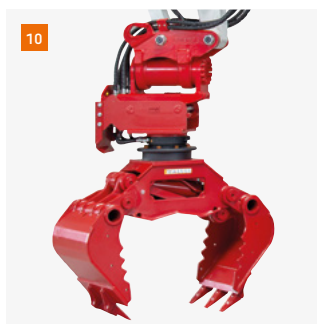
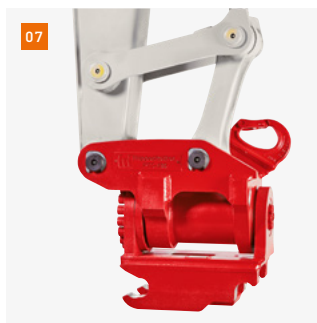
02 Sound-damped, low-vibration comfort cab with air suspension comfort seat with seat heating. Optimally arranged controls with large, clear and user-friendly display made of tarnish-resistant laminated glass. The rear view camera is displayed automatically.

03 Jog Dial for ergonomic and simple menu navigation. Separate control block segment for the 4th control circuit. Control by new multifunction joysticks.

04 The tiltable cabin and generous maintenance hatches **05** for optimum accessibility to hydraulic and fuel maintenance components, battery and radiator.

06 Lockable refuelling flap for optimum access to refuelling pump and tank cap.





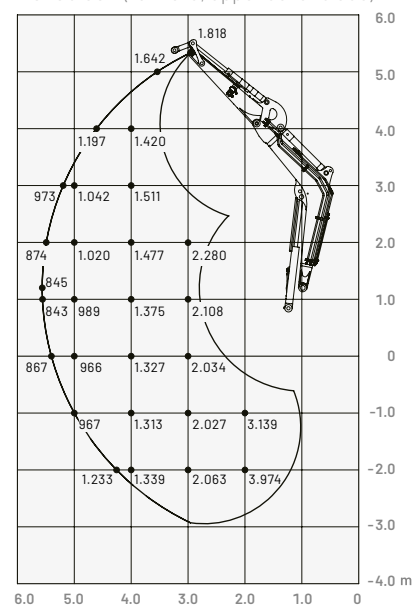
- 07** HUPPTilt tilt device with hydraulic quick change plate HUPPlate H
- 08** HUPPQuick quick coupling system: Hydraulic connections are connected automatically during the quick coupling process
- 09** HUPPBREAK hydraulic breaker 110 with HUPPQuick
- 10** HUPPGrip 70 universal grabber with HUPPTilt and HUPPQuick quick coupling system
- 11** HUPPTilt with HUPPlate H, digging bucket mounted as high bucket
- 12** Concrete buster - Epiroc CB750
- 13** Add-on compactor - Ammann APA55/46
- 14** Drum Cutter - Epiroc ER250



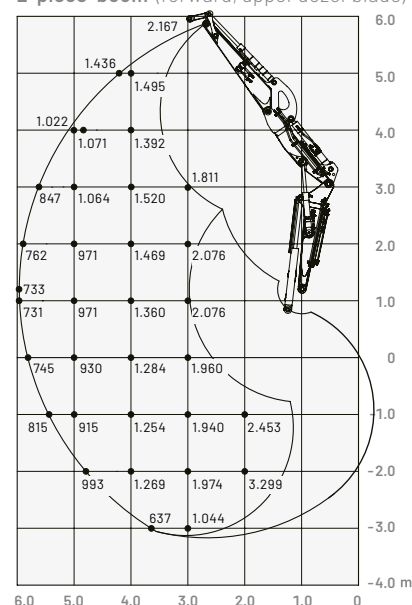
More accessories at
[huppenkothen.com/
 excavator-accessories](http://huppenkothen.com/excavator-accessories)

Lifting load (kg)

Monoblock (forward, upper dozer blade)



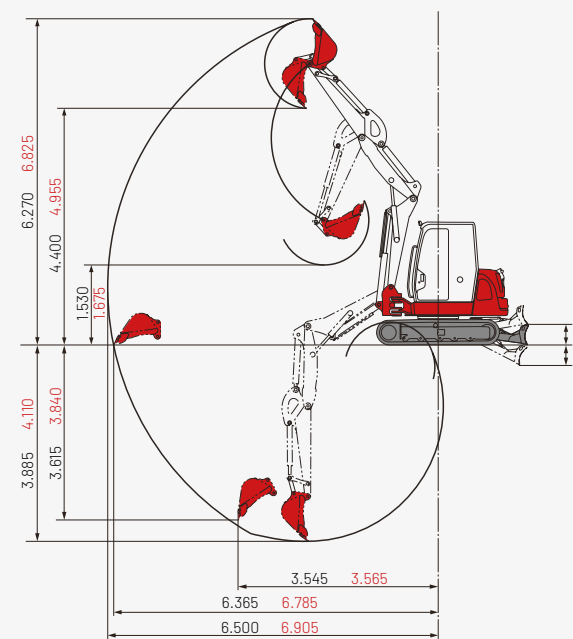
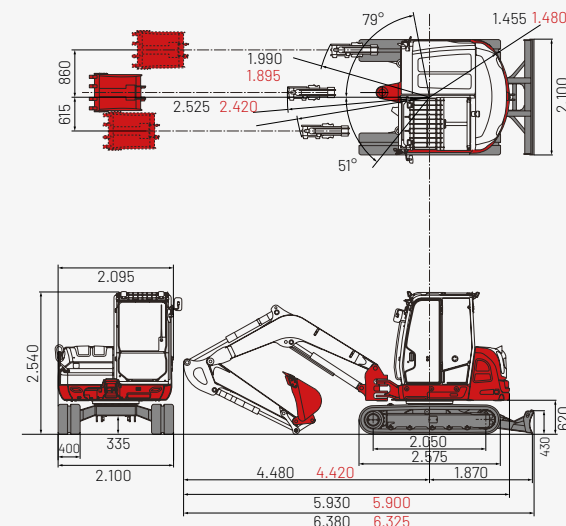
2-piece-boom (forward, upper dozer blade)



The loads in the diagrams (on the left) are within 87% of the hydraulic lifting load and within 75% of the tipping load.

Dimensions (mm)

Black: monoblock and 2-piece-boom
Red: alternative dimensions 2-piece-boom



Huppenkothen – your construction site, your partner, your success!

If you're looking to buy or rent a construction machine, if quality is important to you and you have no time to lose, then you've come to the right place with Huppenkothen. We provide all you need for your construction site. If you have any questions:

We are always available.

42

Locations

410

Employees

4.500+

Machines

100 %

Service

AUSTRIA (AT)

/

Huppenkothen GmbH

Bundesstraße 117 / 6923 Lauterach

T +43 50 663 400

info@huppenkothen.com

The complete
Huppenkothen
product range

