



TAKEUCHI

TB260

Midi excavator with cabin

The Takeuchi **TB260** midi-excavator has an extremely compact design and convinces with its low overhang and a rear swing radius of only 1300 mm even on narrow construction sites. Our 6-tonner has a hydraulic flow of over 100 l on the first control circuit – so even demanding attachments, such as mulchers or rootstock cutters, can be operated optimally.



- » 1st hydraulic circuit, with proportional control with 102,2 l/min
- » 6 LED worklights for optimum illumination of working area
- » Refuelling pump



For three hours, two days or a whole year – if you need it for your construction site, you can **buy and rent** your TB260 from us.

www.huppenkothén.com



Huppenkothen added-value equipment:

There is additional equipment that everyone wants.

You therefore get all as standard from Huppenkothen. This makes your excavator more effective, faster and more comfortable.

Put simply – added value.

HYDRAULICS

4 hydraulic auxiliary circuits, 3 of which have proportional control

Flow rates adjustable on the display

1st circuit: 3 memories, 2nd/4th circuit: 1 memory

1st hydraulic auxiliary circuit, with proportional control – max. 102,2 l / min

2nd hydraulic auxiliary circuit, with proportional control – max. 43,9 l / min

3rd hydraulic auxiliary circuit, for hydraulic quick change plate HUPPlate H

4th hydraulic auxiliary circuit, with proportional control – max. 43,9 l / min

Detent Mode – breaker line continuous operation

Auto-Tank – depressurised return flow for breaker operation

Automatic pressure relief of control circuits when quick change plate is actuated

Hydraulic tank ventilation

Pilot-opened load-holding valve on boom cylinder and arm cylinder

End position damping at boom, arm and swing cylinder



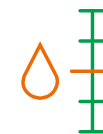
Exclusive
additional
equipment



Powerful



Spacious and
comfortable
operator cabin



Adjustable
flow rates

CAB WITH COMFORT EQUIPMENT

Comfort cabin ROPS (ISO12117-2) / OPG (ISO10262 Level I)

5,7" multifunction colour display incl. fuel and temperature indicator

Heating and radio

Rear window heating with wiper

Electronically controlled air conditioning with 4 outlet nozzles

Mechanically cushioned comfort seat with headrest

HFM (HUPPIFleetManagement) – telematics system with 4 year term of use, extended for additional charge

ECO mode – to increase economic efficiency

Automatic idle speed control – optimised fuel consumption

Sun shield and rain guard

TECHNICAL AND SAFETY EQUIPMENT

Double air filter – additional protection for the engine

Spring-loaded accumulator on parking brake

Spring-loaded accumulator on slew brake

Electric refuelling pump

Pressure accumulator for pressure relief of hydraulic circuits and emergency boom lowering

Storage compartment with on-board toolkit

Acoustic overload warning device (EN474-5)

LED worklights

2 x cab at front, 2 x cab at rear, 1 x engine hood at front, 1 x boom

Socket on cab roof for rotary beacon

**Optional additional
equipment and services**

HUPPLub

Huppenkothen central lubrication system to ensure everything runs even more smoothly.

/

HUPPTronic

Digital assistance for excavator operators – economical, comfortable and intuitive to use.

/

HUPPIWarranty

Extended premium warranty package with all-round protection.

/

HUPPIFleetManagement

An eye on every machine at all times with fleet management. First 4 years included in purchase price.



MAIN DIMENSIONS	
Service weight* (kg)	6.030
Total width (mm)	2.000
Overall height (mm)	2.560
Transport length - dozer blade at the rear (mm)	6.110
Digging depth (mm)	3.735
Reach (mm)	6.120
Arm length (mm)	1.620
Tail swing radius (mm)	1.300
Tracks	Rubber
Track width (mm)	400
Ground contact (mm)	2.050
Ground pressure (kg/cm ²)	0,315
Ground clearance (mm)	330
Dozer blade dimensions (mm)	2.000 x 430

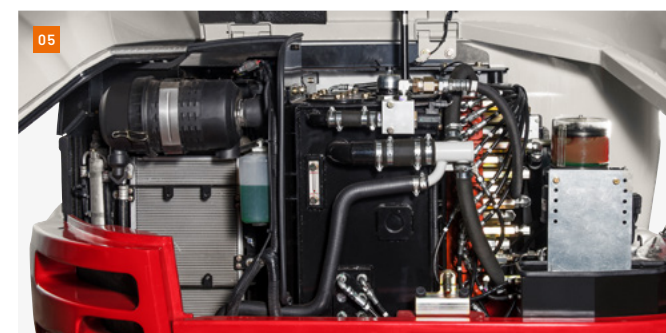
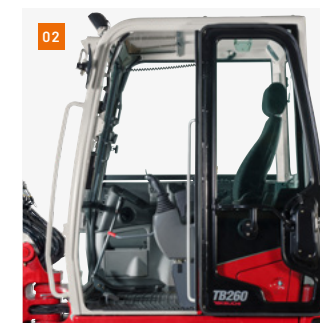
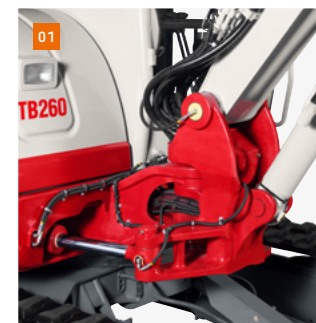
* Machine weight + PT + quick change plate + medium size bucket + half a tank of diesel

ENGINE	
Type	Yanmar 4TNV86CT 4-cylinder diesel engine, turbocharger Stage V emission level
Exhaust aftertreatment	DPF and DOC
Rated output ISO14396 (kW)	35,5 kW @ 2.400 r.p.m.
Displacement (cm ³)	2.091
Fuel tank (l)	81

WORK PERFORMANCE	
Travel speed (km/h)	2,8 (1 st gear) / 4,9 (2 nd gear)
Slew speed (rpm)	9,4
Gradeability (degrees/%)	30 / 58
Boom swing angle l/r (°)	78 / 55
Digging force bucket (kN)	43,2
Digging force arm (kN)	27,3
Digging force boom (kN)	30,4

HYDRAULIC SYSTEM	
Hydraulic pumps	2 x variable axial piston pump + 2 x gear pump
Pump pressure (bar)	240 x 240 x 206 x 33
Flow rate (l/min)	58,3 x 58,3 x 43,9 x 10,8
Hydraulic tank (l)	49 (tank) / 90 (total)
Slew motor type	Axial piston motor, rigid
Travel motor type	Axial piston motor, variable

AUXILIARY CONTROL CIRCUITS	
1 st control circuit hydraulic breaker (l / min) adjustable flow rate 3 memories for the flow rates	102,2
2 nd /4 th control circuit Powertilt / grab (l / min) adjustable flow rate 1 memory for the flow rate	43,9



01 Robust boom swing assy with specially protected hose guide and hydraulic boom swing; boom, arm and swing cylinder with end position damping. Pictured with HUPPLub central lubrication system.

02 Sound-damped, low-vibration comfort cab with mechanically cushioned comfort seat with headrest.

03 Optimally arranged controls and a clear display with visual and acoustic monitoring units. ECO mode to increase economy and reduce diesel consumption.

05 Generous maintenance hatches for optimum accessibility to hydraulic and fuel maintenance components, battery, radiator cleaning and the lubricant reservoir of the optional central lubrication system.

06 Lockable refuelling flap

07 Electric refuelling pump - stops automatically when the tank is full.

Huppenkothen – your construction site, your partner, your success!

If you're looking to buy or rent a construction machine, if quality is important to you and you have no time to lose, then you've come to the right place with Huppenkothen. We provide all you need for your construction site. If you have any questions:

We are always available.

42

Locations

410

Employees

4.500+

Machines

100 %

Service

AUSTRIA (AT)

/

Huppenkothen GmbH

Bundesstraße 117 / 6923 Lauterach

T +43 50 663 400

info@huppenkothen.com

The complete
Huppenkothen
product range

