

TAKEUCHI
TB257FR

Zero tail mini-excavator



The Takeuchi mini excavator **TB257FR** is specifically designed for unrestricted working on very confined construction sites. The patented side-to-side (STS) offset boom makes this zero tail excavator more compact and the best alternative to a short tail excavator. The upper-structure rotates 360° nearly within the width of the track. With a surrounding diameter of just 2870 mm, the TB257FR is also ideal for working in narrow streets where space is confined.



- » 1st hydraulic circuit, with proportional control with 105 l/min High Flow
- » Air conditioning, heater and Bluetooth radio for optimal driver comfort
- » Tilt-up cab for service-friendly access to engine and hydraulic components
- » 5 LED worklights for optimum illumination of working area



For three hours, two days
or a whole year
- if you need it for your
construction site,
you can buy and rent your
TB257FR from us.

www.huppenkothen.com



Huppenkothen added-value equipment

There is additional equipment that everyone wants.

You therefore get more as standard from Huppenkothen. This makes your excavator more powerful, faster and more comfortable.

Put simply – added value.

HYDRAULIK

4 hydraulic auxiliary circuits, 3 of which have proportional control

Flow rates adjustable on the display

1st circuit: 3 memories and High Flow function

2nd/4th circuit: 1 memory

1st hydraulic auxiliary circuit, with proportional control – max. 105 l / min

2nd hydraulic auxiliary circuit, with proportional control – max. 44,7 l / min

3rd hydraulic auxiliary circuit, for hydraulic quick change plate HUPPPlate H

4th hydraulic auxiliary circuit, with proportional control – max. 44,7 l / min

Detent Mode – breaker line continuous operation

Auto-Tank – depressurised return flow for breaker operation

Automatic pressure relief of control circuits when quick change plate is actuated

Strong variable double – axial piston pump

Hydraulic tank venting

Pilot-opened load-holding valve on boom cylinder and arm cylinder



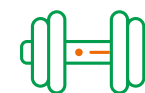
Exclusive
additional kit



Powerful



Spacious and
comfortable
operator cabin



Adjustable
powerhouse

CAB WITH COMFORT EQUIPMENT

Comfort cab ROPS / FOPS (Level II)

Electronically controlled air conditioning with 4 outlet nozzles

Heating and radio

Mechanically cushioned comfort seat with neck support

HFM (HUPPIFleetManagement) – telematics system with 4 year term of use – extended for additional charge

ECO-mode and high-altitude mode for increasing efficiency, optimal engine control at altitude

Automatic idle – r.p.m. deceleration

Sun shield

TECHNICAL AND SAFETY EQUIPMENT

Double air filter – additional protection for the engine

Spring-loaded accumulator on parking brake

Spring-loaded accumulator on slew brake

Electric refuelling pump

Pressure accumulators for pressure relief of hydraulic circuits and emergency boom lowering

Storage compartment with on-board toolkit

Acoustic overload warning device (EN474-5)

LED worklights 1x arm, 2x on cab at front, 2x on cab at rear

Socket on cab roof for rotary beacon

USB charging socket

**Optional additional
equipment
and services**

HUPPLub

Huppenkothen central lubrication system to ensure everything runs even more smoothly

HUPPTronic

Digital assistance for excavator operators – economical, comfortable and intuitive to use.

HUPPIWarranty

Extended premium warranty package with all-round protection.

HUPPIFleetManagement

An eye on every machine at all times with fleet management. First 4 years included in purchase price.



SPECIFICATIONS	
Engine	KUBOTA V2403-CR-TE5B Commonrail diesel engine, turbo charger, 39.0 kW @ 2,200 rpm (ISO14369) Stage V emission level - with DPF and DOC
Dimensions (mm)	5.395 x 2.000 x 2.575
Digging depth (mm)	3.895
Reach (mm)	6.215
360° swing radius (mm)	1.435

MAIN DIMENSIONS	
Service weight* (kg)	6.160
Total width (mm)	2.000
Overall height (mm)	2.575
Transport length (mm)	5.905
Boom swing angle l / r (°)	30 / 16

* Machine weight + PT + quick change plate + medium size bucket + half a tank of diesel

CHASSIS	
Tracks	rubber, steel
Track width (mm)	400
Ground contact (mm)	1.980
Ground pressure (kg / cm ²)	0,333
Ground clearance (mm)	300
Dozer blade dimensions (mm)	2.000 x 430

WORK PERFORMANCE	
Travel speed (km / h)	4,8
Slew speed (rpm)	9,6
Gradeability (degrees / %)	30 / 58
Digging force bucket (kN)	36,6
Digging force arm (kN)	23,1

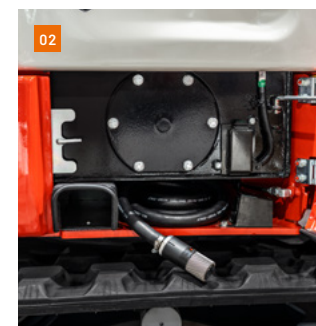
HYDRAULIC SYSTEM	
Hydraulic pumps	Double axial piston pump + 2 gear pumps
Pump pressure (bar)	240 x 240 x 206 x 34
Flow rate (l / min)	60,5 x 60,5 x 44,7 x 9,9
Hydraulic tank (l)	52 (Tank) / 100 (total)
Slew motor type	Axial piston motor, rigid
Travel motor type	Axial piston motor, variable

AUXILIARY CONTROL CIRCUITS	
1 st control circuit hydraulic breaker 3 x adjustable flow rate	105,0
2 nd / 4 th control circuit Powertilt / grab (l / min) adjustable flow rate	44,7



01

01 Ergonomic, mechanically cushioned comfort seat and optimal arrangement of controls for fatigue-free working



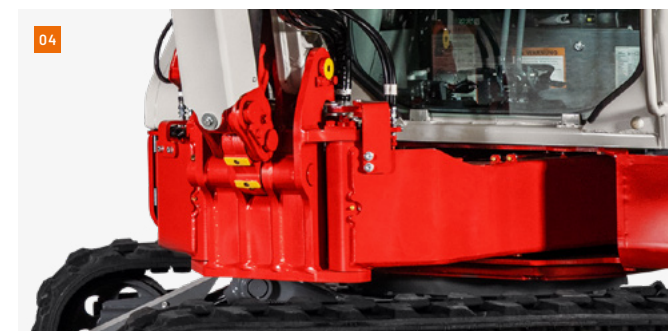
02

02 Separate compartment for fuelling hose in the upperstructure



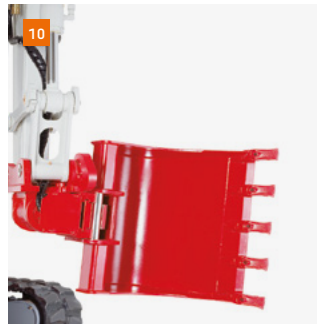
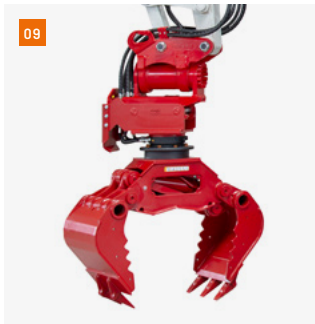
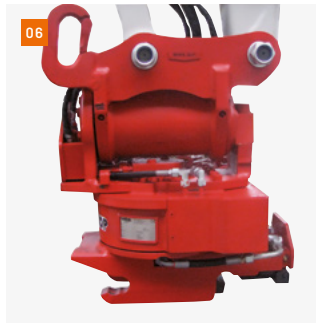
03

03 Additional hinged flap for optimum access to refuelling pump and fuel filler flap



04

04 Takeuchi-patented, extremely robust lateral boom offset



05 Hydraulic HUPPPlate H quick-coupler

06 HUPPTilt R tilt-rotator with HUPPPlate H

07 HUPPTwist rotator bucket 360°

08 Hydraulic breaker HUPPBreak 60 with HUPPQuick

09 Universal grabber HUPPGrip 60 with HUPPTilt and HUPPQuick quick coupling system

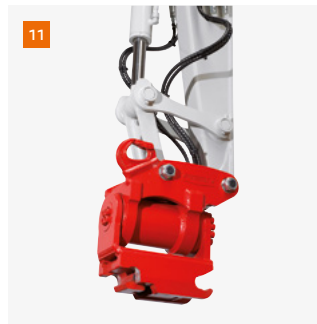
10 HUPPTilt with HUPPPlate H, digging bucket mounted as high bucket

11 HUPPTilt tilt device with HUPPPlate H

12 HUPPQuick system: Hydraulic connections are connected automatically during the quick coupling process

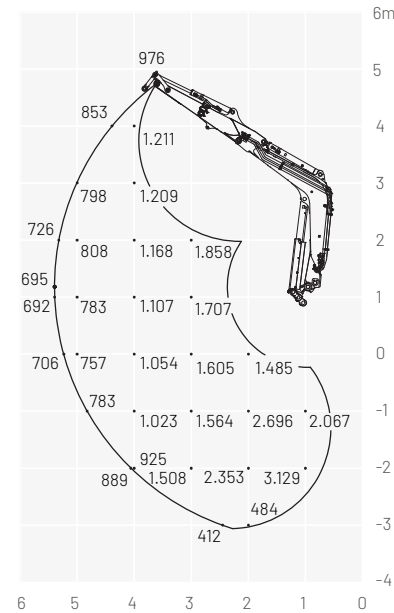


More accessories at
**[huppenkothen.com/
excavator-accessories](http://huppenkothen.com/excavator-accessories)**



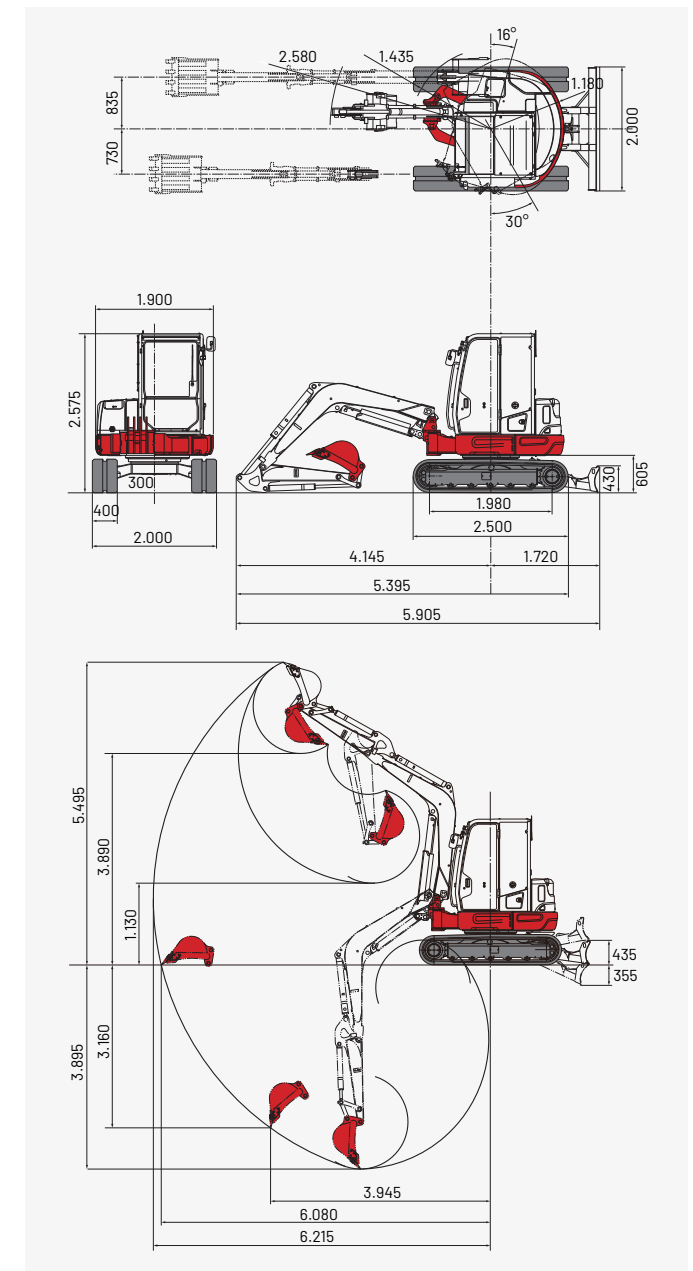
Lifting load (kg)

Forward (upper dozer blade)



The loads in the diagram are within 87 % of the hydraulic lifting load and within 75 % of the tipping load.

Dimensions (mm)



Huppenkothen – your construction site, your partner, your success!

If you're looking to buy or rent a construction machine, if quality is important to you and you have no time to lose, then you've come to the right place with Huppenkothen. We provide all you need for your construction site. If you have any questions

We are always available.

42

Locations

410

Employees

4.500+

Machines

100 %

Service

AUSTRIA (AT)

/

Huppenkothen GmbH

Bundesstraße 117 / 6923 Lauterach

T +43 50 663 400

info@huppenkothen.com

The complete
Huppenkothen
product range

