



**TAKEUCHI**

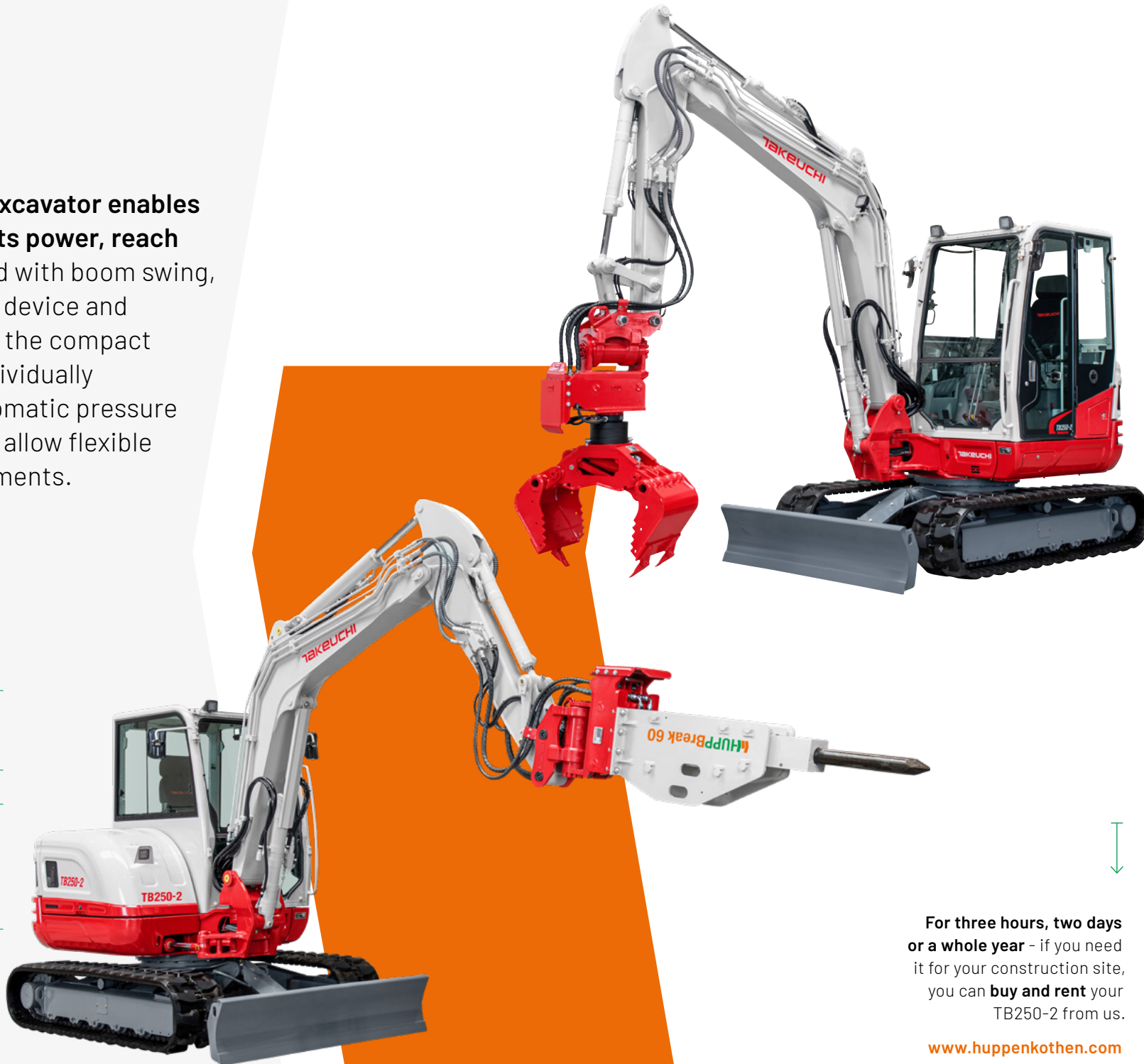
**TB250-2**

Mini excavator with cabin

The Takeuchi **TB250-2** mini excavator enables **maximum productivity with its power, reach and lifting capacity**. Equipped with boom swing, in combination with HUPPTilt device and hydraulic quick-change plate, the compact excavator solves any task. Individually adjustable flow rates and automatic pressure relief of the hydraulic circuits allow flexible use of a wide range of attachments.



- » 1<sup>st</sup> hydraulic circuit, with proportional control with 91,7 l/min
- » 6 LED worklights for optimum illumination of working area
- » Refuelling pump
- » Available in 3 versions: with canopy, with comfort cabin without air-conditioning, with comfort cabin with air-conditioning.



For three hours, two days or a whole year - if you need it for your construction site, you can **buy and rent** your TB250-2 from us.

[www.huppenkothén.com](http://www.huppenkothén.com)



# Huppenkothen added-value equipment:

**There is additional equipment that everyone wants.**

You therefore get all as standard from Huppenkothen. This makes your excavator more effective, faster and more comfortable.

**Put simply – added value.**

## **HYDRAULICS**

**4 hydraulic auxiliary circuits**, 3 of which have proportional control

**Flow rates adjustable on the display**

1<sup>st</sup> circuit: 3 memories, 2<sup>nd</sup>/4<sup>th</sup> circuit: 1 memory

**1<sup>st</sup> hydraulic auxiliary circuit, with proportional control** – max. 91,7 l / min

**2<sup>nd</sup> hydraulic auxiliary circuit, with proportional control** – max. 38,9 l / min

**3<sup>rd</sup> hydraulic auxiliary circuit**, for hydraulic quick change plate HUPPlate H

**4<sup>th</sup> hydraulic auxiliary circuit, with proportional control** – max. 38,9 l / min

**Detent Mode** – breaker line continuous operation

**Auto-Tank** – depressurised return flow for breaker operation

**Automatic pressure relief of control circuits** when quick change plate is actuated

**Hydraulic tank ventilation**

**Pilot-opened load-holding valve on boom cylinder and arm cylinder**

**End position damping at boom, arm and swing cylinder**



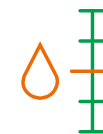
Exclusive  
additional  
equipment



Powerful



Spacious and  
comfortable  
operator cabin



Adjustable  
flow rates

## **CAB WITH COMFORT EQUIPMENT**

**Comfort cabin** ROPS (ISO12117-2) / OPG (ISO10262 Level I) / TOPS (ISO12117)

**5,7" multifunction colour display** incl. fuel and temperature indicator

**Heating and radio**

**Rear window heating with wiper**

**Electronically controlled air conditioning** with 4 outlet nozzles (optional)

**Mechanically cushioned comfort seat with headrest**

**HFM (HUPPIFleetManagement)** – telematics system with 4 year term of use, extended for additional charge

**ECO mode** – to increase economic efficiency

**Automatic idle speed control** – optimised fuel consumption

**Sun shield**

## **TECHNICAL AND SAFETY EQUIPMENT**

**Double air filter** – additional protection for the engine

**Spring-loaded accumulator on parking brake**

**Spring-loaded accumulator on slew brake**

**Electric refuelling pump**

**Pressure accumulator** for pressure relief of hydraulic circuits and emergency boom lowering

**Storage compartment with on-board toolkit**

**Acoustic overload warning device** (EN474-5)

**LED worklights**

2 x cab at front, 2 x cab at rear, 1 x engine hood at front, 1 x boom

**Socket on cab roof** for rotary beacon

**Optional additional  
equipment and services**

### **HUPPLub**

Huppenkothen central lubrication system to ensure everything runs even more smoothly.

/

### **HUPPTronic**

Digital assistance for excavator operators – economical, comfortable and intuitive to use.

/

### **HUPPIWarranty**

Extended premium warranty package with all-round protection.

/

### **HUPPIFleetManagement**

An eye on every machine at all times with fleet management. First 4 years included in purchase price.





MAIN DIMENSIONS	
Service weight* (kg)	5.380
Total width (mm)	1.840
Overall height (mm)	2.555
Transport length - dozer blade at the rear (mm)	5.855
Digging depth (mm)	3.620
Reach (mm)	5.980
Arm length (mm)	1.600
Tail swing radius (mm)	1.360
Tracks	Rubber
Track width (mm)	400
Ground contact (mm)	1.975
Ground pressure (kg/cm <sup>2</sup> )	0,29
Ground clearance (mm)	335
Dozer blade dimensions (mm)	1.840 x 430

\* Machine weight + PT + quick change plate + medium size bucket + half a tank of diesel

ENGINE	
Type	Yanmar 4TNV88C 4-cylinder diesel engine, Stage V emission level
Exhaust aftertreatment	DPF and DOC
Rated output ISO14396 (kW)	29 kW @ 2.400 r.p.m.
Displacement (cm <sup>3</sup> )	2.189
Fuel tank (l)	70

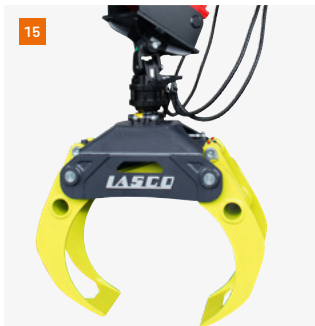
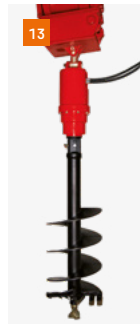
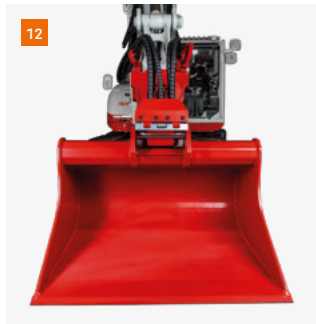
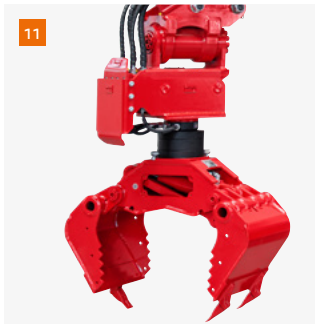
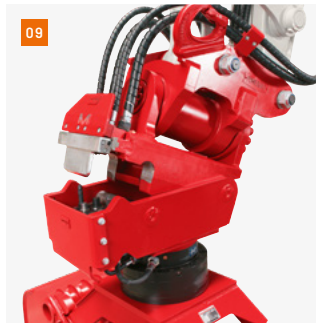
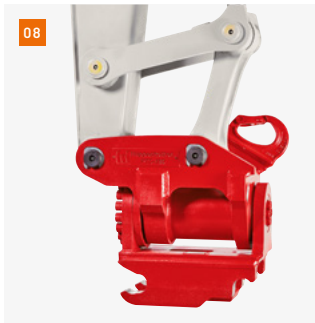
WORK PERFORMANCE	
Travel speed (km/h)	2,8 (1 <sup>st</sup> gear) / 5,2 (2 <sup>nd</sup> gear)
Slew speed (rpm)	9,5
Gradeability (degrees/%)	30 / 58
Boom swing angle l/r (°)	70 / 55
Digging force bucket (kN)	37,3
Digging force arm (kN)	24,8
Digging force boom (kN)	26,5

HYDRAULIC SYSTEM	
Hydraulic pumps	2 x variable axial piston pump + 2 x gear pump
Pump pressure (bar)	240 x 240 x 206 x 34
Flow rate (l/min)	52,8 x 52,8 x 38,9 x 10,8
Hydraulic tank (l)	45 (tank) / 95 (total)
Slew motor type	Axial piston motor, rigid
Travel motor type	Axial piston motor, variable

AUXILIARY CONTROL CIRCUITS	
1 <sup>st</sup> control circuit hydraulic breaker (l / min) adjustable flow rate 3 memories for the flow rates	91,7
2 <sup>nd</sup> /4 <sup>th</sup> control circuit Powertilt / grab (l / min) adjustable flow rate 1 memory for the flow rate	38,9



- 01 Robust boom swing assy with specially protected hose guide and hydraulic boom swing; lifting and swing cylinder with end position damping.
- 02 Sound-damped, low-vibration comfort cab with mechanically cushioned comfort seat.
- 03 Optimally arranged controls and a clear display with visual and acoustic monitoring units. ECO mode to increase economy and reduce diesel consumption.
- 04 visual and acoustic monitoring units. ECO mode to increase economy and reduce diesel consumption.
- 05 Generous maintenance hatches for optimum accessibility to hydraulic and fuel maintenance components, battery and radiator.
- 06 Lockable refuelling flap
- 07 Track rollers with inner and outer guide for safe rubber track running. Double short-pitch rubber tracks for low-vibration driving.



**08** HUPPTilt tilt device with hydraulic quick change plate HUPPlate H

**09** HUPPQuick quick coupling system: Hydraulic connections are connected automatically during the quick coupling process

## 10 HUPPBREAK hydraulic breaker 60 with HUPPQuick

**11** HUPPGrip 60 universal grabber with HUPPTilt

**12** HUPPTilt with HUPPPlate H, digging bucket can be mounted as high bucket

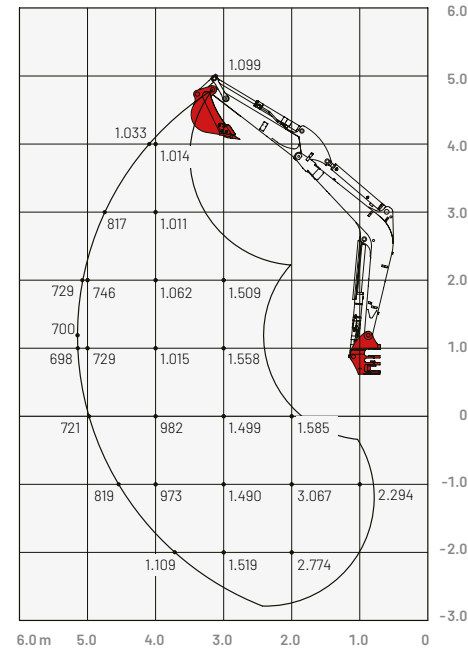
13 Earth drill - 4500 MAX

14 Add-on compactor - Ammann APA20/30

15 Wood grapple - Lasco LA1200HZ

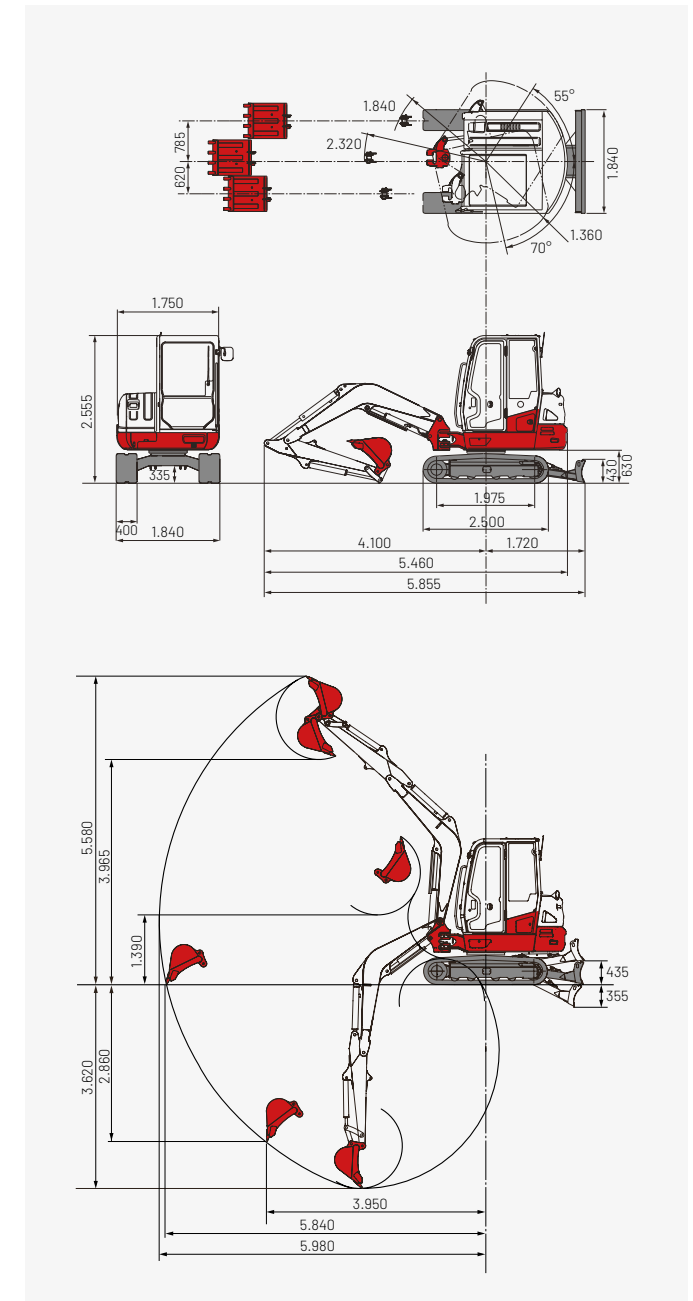
**Lifting load** (kg) TB250-2 cabin

**Forward** (upper dozer blade)



The loads in the diagram are within 87% of the hydraulic lifting load and within 75% of the tipping load.

**Dimensions** (mm) TB250-2 cabin



## Huppenkothen – your construction site, your partner, your success!

If you're looking to buy or rent a construction machine, if quality is important to you and you have no time to lose, then you've come to the right place with Huppenkothen. We provide all you need for your construction site. If you have any questions:

**We are always available.**

**42**

Locations

**410**

Employees

**4.500+**

Machines

**100 %**

Service

### AUSTRIA (AT)

/

**Huppenkothen GmbH**

Bundesstraße 117 / 6923 Lauterach

T +43 50 663 400

info@huppenkothen.com

The complete  
Huppenkothen  
product range

