



TAKEUCHI

TB350R

Short-tail excavator with cabin

The **TB350R** short-tail excavator is characterised by its minimal rear overhang. Even on construction sites that are difficult to access, our 5-tonner is easy to manoeuvre. In urban areas, it is your best friend. With the TB350R, you won't bump into anything. Equipped with the latest technology and a perfectly equipped cab with intuitive features, the TB350R offers you a modern and comfortable workplace for maximum productivity and performance.



- » 1st hydraulic circuit, with proportional control with 93,2 l/min
- » Most important machine functions can be operated intuitively via the 7" color touch display and the jog-dial control
- » 5 LED worklights for optimum illumination of working area; protected positioning of the LED headlight on the main arm



For three hours, two days or a whole year - if you need it for your construction site, you can **buy and rent** your TB350R from us.

www.huppenkothén.com



Huppenkothen added-value equipment:

There is additional equipment that everyone wants.

You therefore get all as standard from Huppenkothen. This makes your excavator more effective, faster and more comfortable.

Put simply – added value.

HYDRAULICS

4 hydraulic auxiliary circuits, 3 of which have proportional control

Flow rates adjustable on the display

1st circuit: 3 memories, 2nd/4th circuit: 1 memory

1st hydraulic auxiliary circuit, with proportional control – max. 93,2 l / min

2nd hydraulic auxiliary circuit, with proportional control – max. 40,6 l / min

3rd hydraulic auxiliary circuit, for hydraulic quick change plate HUPPlate H

4th hydraulic auxiliary circuit, with proportional control – max. 40,6 l / min

Detent Mode – breaker line continuous operation

Auto-Tank – depressurised return flow for breaker operation

Automatic pressure relief of control circuits when quick change plate is actuated

Hydraulik tank ventilation

Pilot-opened load-holding valve on boom cylinder and arm cylinder

End position damping at boom, arm and swing cylinder



Exclusive additional
equipment



Powerful



Minimum slewing
radius



Adjustable
flow rates

CAB WITH COMFORT EQUIPMENT

Comfort cab ROPS ISO12117-2 / OPG ISO10262 Level I / TOPS ISO12117

7" multifunction colour touch display

Electronically controlled air conditioning with 4 outlet nozzles

Bluetooth DAB radio

USB charging socket

Microphone input for handsfree set

Suspended comfort seat, canvas covered, with headrest

HFM (HUPFIleetManagement) – telematics system with 4 year term of use
– extended for additional charge

ECO mode – to increase economic efficiency

Automatic idle – r.p.m. deceleration – to optimise consumption

Sun shield

Rain guard

TECHNICAL AND SAFETY EQUIPMENT

Double air filter – additional protection for the engine

Spring-loaded accumulator on parking brake

Spring-loaded accumulator on slew brake

Electric refuelling pump

Pressure accumulator for pressure relief of hydraulic circuits and
emergency boom lowering

Storage compartment with on-board toolkit

Acoustic overload warning device (EN474-5)

Rear view camera – for more safety

LED worklights

2 x cab at front, 2 x cab at rear, 1 x boom

Socket on cab roof for rotary beacon

**Optional additional
equipment and services**

HUPPLub

Huppenkothen central lubrication system to ensure everything runs even more smoothly.

/

HUPTronic

Digital assistance for excavator operators – economical, comfortable and intuitive to use.

/

HUPPIWarranty

Extended premium warranty package with all-round protection.

/

HUPFIleetManagement

An eye on every machine at all times with fleet management. First 4 years included in purchase price.



MAIN DIMENSIONS	
Service weight* (kg)	5.350
Total width (mm)	2.000
Overall height (mm)	2.540
Transport length - dozer blade at the rear (mm)	5.900
Digging depth (mm)	3.575
Reach (mm)	6.065
Arm length (mm)	1.650
Tail swing radius (mm)	1.075
Tracks	Rubber
Track width (mm)	400
Ground contact (mm)	1.975
Ground pressure (kg/cm ²)	0,289
Ground clearance (mm)	335
Dozer blade dimensions (mm)	2.000 x 430

* Machine weight + HUPPPlate + HUPPTilt + medium size bucket + half a tank of diesel

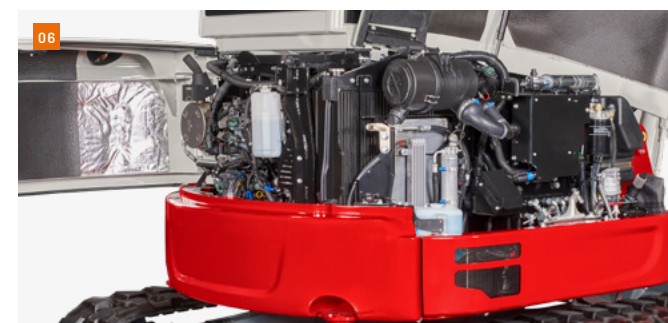
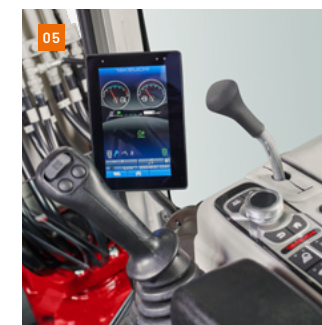
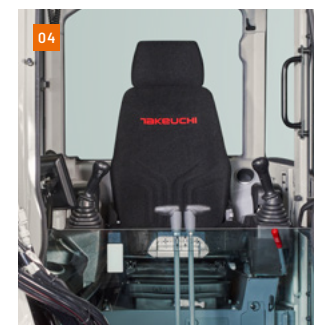
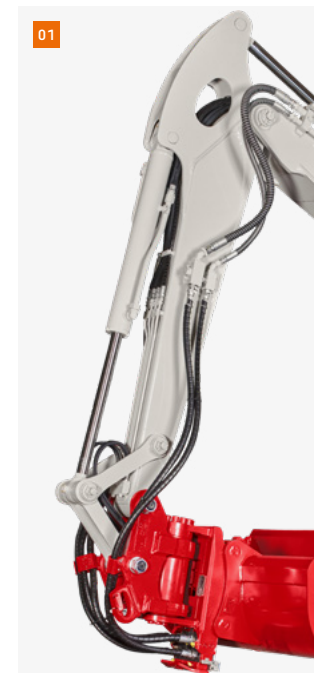
ENGINE	
Type	KUBOTA V2607-CR-E5B 4-cylinder Commonrail diesel engine, stage V emission level
Exhaust aftertreatment	DPF and DOC
Rated output ISO14396 (kW)	32,4 kW @ 2.000 rpm
Displacement (cm ³)	2.615
Fuel tank (l)	55,3

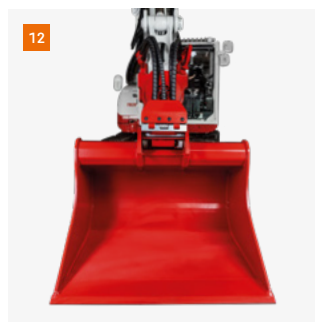
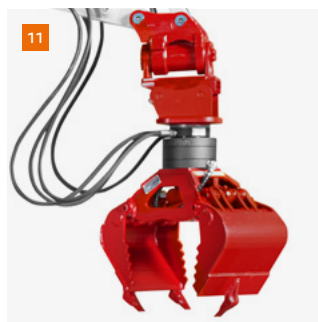
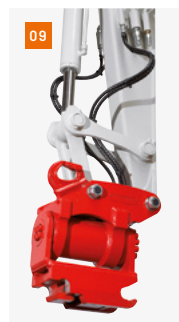
WORK PERFORMANCE	
Travel speed (km/h)	2,8 (1 st gear) / 5,0 (2 nd gear)
Slew speed (rpm)	8,9
Gradeability (degrees/%)	30 / 58
Boom swing angle l / r (°)	71 / 55
Digging force bucket (kN)	37,3
Digging force arm (kN)	22,4
Digging force boom (kN)	28,1

HYDRAULIC SYSTEM	
Hydraulic pumps	2 x variable axial piston pump + 2 x gear pump
Pump pressure (bar)	240 x 240 x 206 x 34
Flow rate (l/min)	52,6 x 52,6 x 40,6 x 13
Hydraulic tank (l)	40,8 (tank) / 85 (total)
Slew motor type	Axial piston motor, rigid
Travel motor type	Axial piston motor, variable

AUXILIARY CONTROL CIRCUITS	
1 st control circuit hydraulic breaker (l/min) adjustable flow rate 3 memories for the flow rates	93,2
2 nd /4 th control circuit Powertilt/grab (l/min) adjustable flow rate 1 memory for the flow rate	40,6

- 01 Long stick arm with 4 control circuits as standard, 3 of which have proportional control, for a wide range of implements; load-holding valves on boom and arm cylinders; upper mount of AUX3 circuit (quick change plate) and AUX4 circuit (HUPPTilt)
- 02 Protected positioning of the LED headlight on the main arm - no shadows cast for the driver; attachment / bucket is directly illuminated.
- 03 Robust boom swing assy with specially protected hose guide; boom, arm and swing cylinder with end position damping.
- 04 Sound-damped, low-vibration comfort cab with mechanically suspended, ergonomic comfort seat with headrest for fatigue-free working.
- 05 Most important machine functions can be operated intuitively via the high-resolution 7" color touch display and the jog-dial control.
- 06 Generous maintenance hatches guarantee optimum accessibility for checking fluid levels, cleaning the radiator and carrying out maintenance work on the diesel engine.





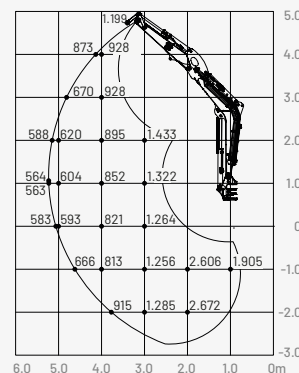
- 07** HUPPView Bucket position control system for precise work. No unwanted over-excavation; higher precision due to defined nominal angle - increased productivity and reduced costs. Can be combined with HUPPLimit and HUPPLLevel modules.
- 08** Hydraulic HUPPPlate H quick change plate
- 09** HUPPTilt tilt device with HUPPPlate H
- 10** HUPPBREAK 60 hydraulic breaker
- 11** HUPPGrip 60 universal grabber with HUPPTilt tilt device
- 12** HUPPTilt with HUPPPlate H, digging bucket mounted as high bucket



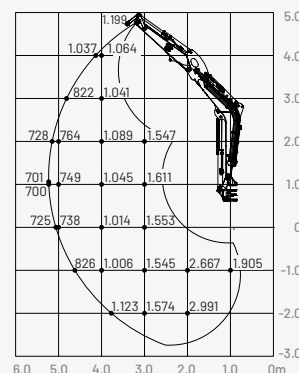
More accessories at
[huppenkothen.com/
 excavator-accessories](http://huppenkothen.com/excavator-accessories)

Lifting load (kg)

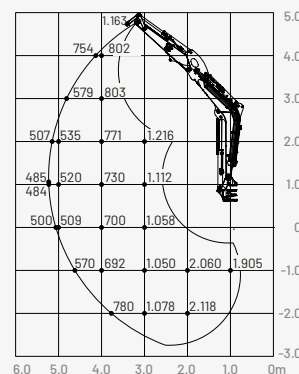
To the front,
dozer blade
raised



To the rear

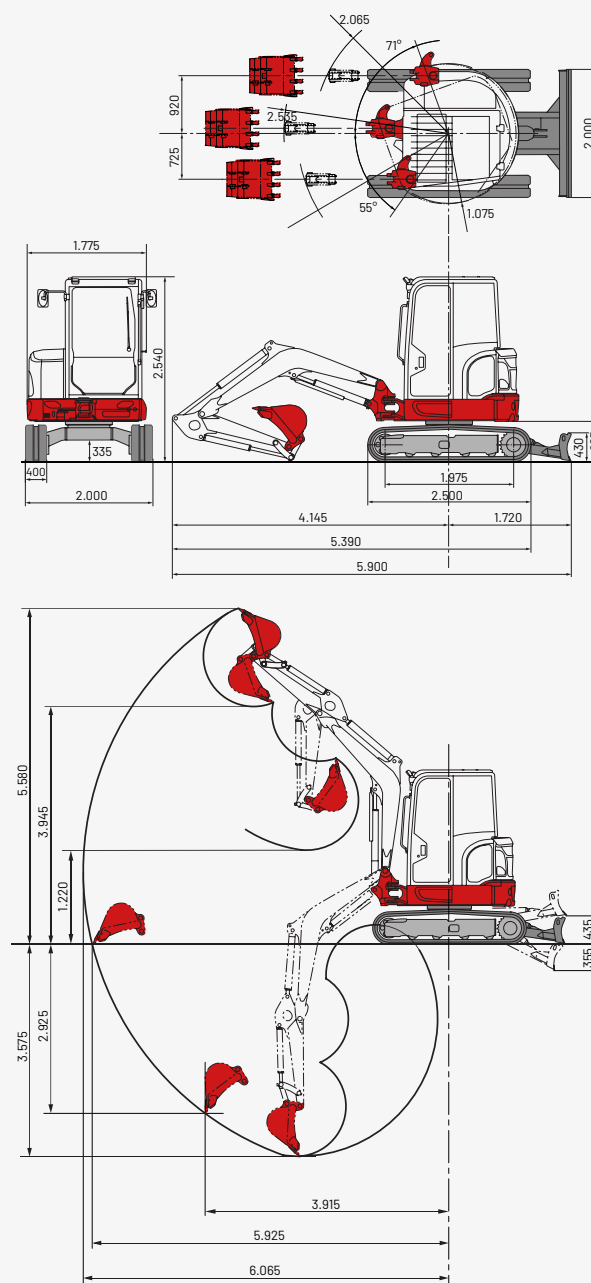


To the side



The loads in the diagram are within 87% of the hydraulic lifting load and within 75% of the tipping load.

Dimensions (mm)



Huppenkothen – your construction site, your partner, your success!

If you're looking to buy or rent a construction machine, if quality is important to you and you have no time to lose, then you've come to the right place with Huppenkothen. We provide all you need for your construction site. If you have any questions:

We are always available.

42

Locations

410

Employees

4.500+

Machines

100 %

Service

AUSTRIA (AT)

/

Huppenkothen GmbH

Bundesstraße 117 / 6923 Lauterach

T +43 50 663 400

info@huppenkothen.com

The complete
Huppenkothen
product range

