



**TAKEUCHI**


**TB335R**

Short-tail excavator with cabin

The **TB335R** short tail excavator is characterised by its minimal rear overhang. Thanks to its compact design, our 3.9 tonne excavator is easy to manoeuvre without losing stability. Especially on hard-to-reach construction sites and in urban areas the TB335R is your **closest ally**. Equipped with state-of-the-art technology and a new, very well-equipped cabin with intuitive features, the TB335R offers you a modern and comfortable workplace for maximum productivity and performance.



- » 1<sup>st</sup> hydraulic circuit, with proportional control with 64,4 l/min
- » Most important machine functions can be operated intuitively via the 7" color touch display and the jog-dial control
- » 5 LED worklights for optimum illumination of working area
- » Available in 2 versions: with comfort cabin with air-conditioning or with comfort cabin without air-conditioning



For three hours, two days or a whole year - if you need it for your construction site, you can **buy and rent** your TB335R from us.

[www.huppenkothén.com](http://www.huppenkothén.com)



# Huppenkothen added-value equipment:

**There is additional equipment that everyone wants.**

You therefore get all as standard from Huppenkothen. This makes your excavator more effective, faster and more comfortable.

**Put simply – added value.**



Exclusive additional  
equipment



Powerful



Minimum slewing  
radius



Adjustable  
flow rates

## **HYDRAULICS**

**4 hydraulic auxiliary circuits**, 3 of which have proportional control

**Flow rates adjustable on the display**

1<sup>st</sup> circuit: 3 memories; 2<sup>nd</sup>/4<sup>th</sup> circuit: 1 memory

**1<sup>st</sup> hydraulic auxiliary circuit, with proportional control** – max. 64,4 l / min

**2<sup>nd</sup> hydraulic auxiliary circuit, with proportional control** – max. 21,9 l / min

**3<sup>rd</sup> hydraulic auxiliary circuit**, for hydraulic quick change plate HUPPlate H

**4<sup>th</sup> hydraulic auxiliary circuit, with proportional control** – max. 21,9 l / min

**Detent Mode** – breaker line continuous operation

**Auto-Tank** – pressureless return flow for breaker operation

**Hydraulik tank ventilation**

**Pilot-opened load-holding valve on boom cylinder and arm cylinder**

**End position damping at boom, arm and swing cylinder**

## **CAB WITH COMFORT EQUIPMENT**

**Comfort cab ROPS / FOPS**

**7" multifunction colour touch display**

**Air conditioning with 6 outlet nozzles** (optional)

**Bluetooth DAB radio**

**USB charging socket**

**Microphone input for handsfree set**

**Suspended comfort seat**, canvas covered, with headrest

**HFM (HUPFIleetManagement)** – telematics system with 4 year term of use  
– extended for additional charge

**ECO mode** – to increase economic efficiency

**Automatic idle – r.p.m. deceleration** – to optimise consumption

**Sun shield**

## **TECHNICAL AND SAFETY EQUIPMENT**

**Double air filter** – additional protection for the engine

**Spring-loaded accumulator on parking brake**

**Spring-loaded accumulator on slew brake**

**Electric refuelling pump**

**Pressure accumulator** for pressure relief of hydraulic circuits and  
emergency boom lowering

**Storage compartment** with on-board toolkit

**Acoustic overload warning device** (EN474-5)

**Rear view camera** – for more safety

**LED worklights**: 2 x cab at front, 2 x cab at rear, 1 x boom

**Socket on cab roof** for rotary beacon

**Optional additional  
equipment and services**

### **HUPPLub**

Huppenkothen central lubrication system to ensure everything runs even more smoothly.

/

### **HUPPTronic**

Digital assistance for excavator operators – economical, comfortable and intuitive to use.

/

### **HUPPIWarranty**

Extended premium warranty package with all-round protection.

/

### **HUPFIleetManagement**

An eye on every machine at all times with fleet management. First 4 years included in purchase price.



MAIN DIMENSIONS	
Service weight* (kg)	3.960
Total width (mm)	1.740
Overall height (mm)	2.490
Transport length - dozer blade at the rear (mm)	5.440
Digging depth (mm)	3.205
Reach (mm)	5.430
Arm length (mm)	1.410
Tail swing radius (mm)	950
Tracks	Rubber
Track width (mm)	300
Ground contact (mm)	1.750
Ground pressure (kg/cm <sup>2</sup> )	0,33
Ground clearance (mm)	295
Dozer blade dimensions (mm)	1.740 x 395

\* Machine weight + PT + quick change plate + medium size bucket + half a tank of diesel

ENGINE	
Type	Kubota V1505-E4B 4-cylinder diesel engine Stage V emission level
Rated output ISO14396 (kW)	18,2 kW @ 2.300 rpm
Displacement (cm <sup>3</sup> )	1.498
Fuel tank (l)	43,5

WORK PERFORMANCE	
Travel speed (km/h)	3,0 (1 <sup>st</sup> gear) / 4,1 (2 <sup>nd</sup> gear)
Slew speed (rpm)	9
Gradeability (degrees/%)	25 / 47
Boom swing angle l / r (°)	70 / 55
Digging force bucket (kN)	27,1
Digging force arm (kN)	19,1
Digging force boom (kN)	18

HYDRAULIC SYSTEM	
Hydraulic pumps	Variable double axial piston pump + 2 gear pumps
Pump pressure (bar)	245 x 245 x 206 x 34
Flow rate (l/min)	42,6 x 42,6 x 21,9 x 10,4
Hydraulic tank (l)	28,4 (tank) / 59 (total)
Slew motor type	Axial piston motor, rigid
Travel motor type	Axial piston motor, variable

AUXILIARY CONTROL CIRCUITS	
1 <sup>st</sup> control circuit hydraulic breaker (l/min) adjustable flow rate 3 memories for the flow rates	64,4
2 <sup>nd</sup> /4 <sup>th</sup> control circuit Powertilt/grab (l/min) adjustable flow rate 1 memory for the flow rate	21,9

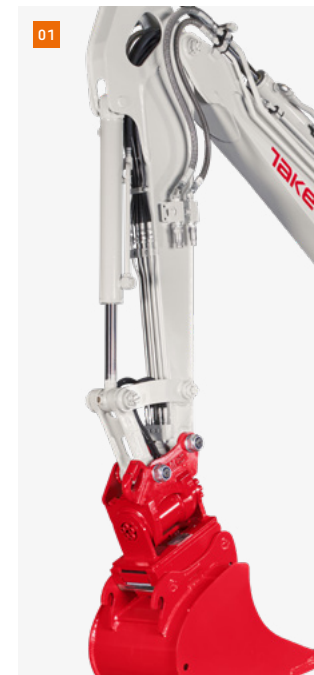
**01** Long stick arm with 4 control circuits as standard, 3 of which have proportional control, for a wide range of implements; load-holding valves on boom and arm cylinders; upper mount of AUX3 circuit (quick change plate) and AUX4 circuit (HUPPTilt)

**02** Sound-damped, low-vibration comfort cab with mechanically suspended, ergonomic comfort seat with headrest for fatigue-free working.

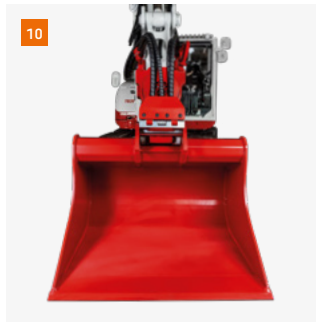
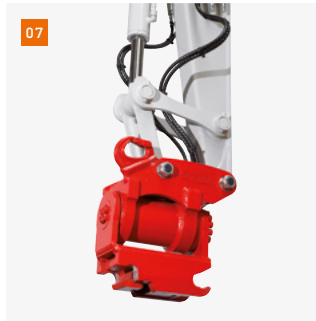
**03** Robust boom swing assy with specially protected hose guide; lifting and swing cylinder with end position damping.

**04** Most important machine functions can be operated intuitively via the high-resolution 7" color touch display and the jog-dial control.

**05** Generous maintenance hatches guarantee optimum accessibility for checking fluid levels, cleaning the radiator and carrying out maintenance work on the diesel engine.







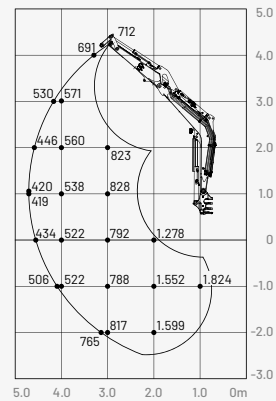
- 06 Hydraulic HUPPPlate H quick change plate
- 07 HUPPTilt tilt device with HUPPPlate H
- 08 HUPPBREAK 40 hydraulic breaker
- 09 HUPPGrip 40 universal grabber with HUPPTilt tilt device
- 10 HUPPTilt with HUPPPlate H, digging bucket mounted as high bucket



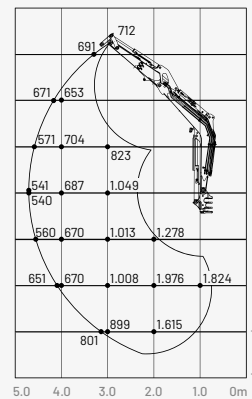
More accessories at  
[huppenkothen.com/  
 excavator-accessories](http://huppenkothen.com/excavator-accessories)

## Lifting load (kg)

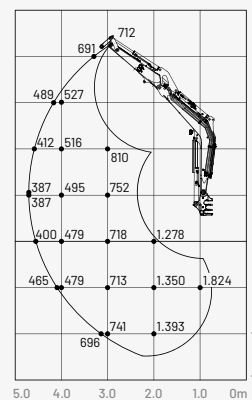
To the front,  
dozer blade raised



To the rear

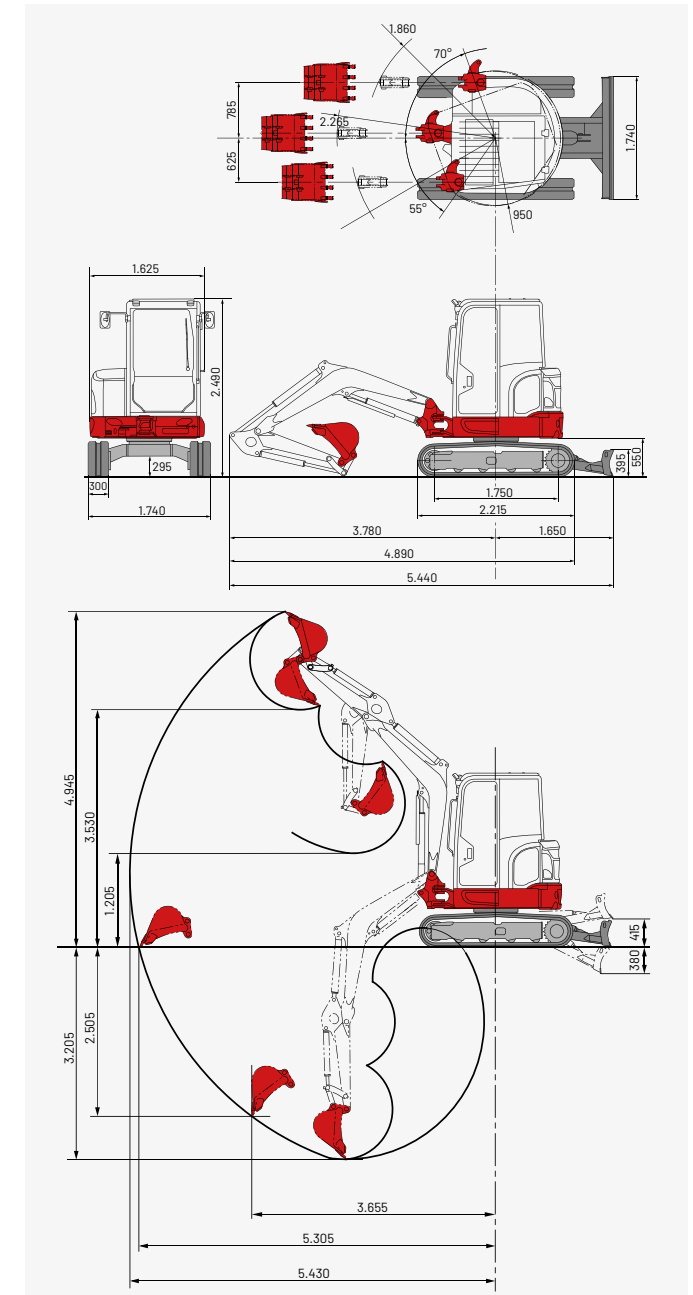


To the side



The loads in the diagram are within 87% of the hydraulic lifting load and within 75% of the tipping load.

## Dimensions (mm)



## Huppenkothen – your construction site, your partner, your success!

If you're looking to buy or rent a construction machine, if quality is important to you and you have no time to lose, then you've come to the right place with Huppenkothen. We provide all you need for your construction site. If you have any questions:

**We are always available.**

**42**

Locations

**410**

Employees

**4.500+**

Machines

**100 %**

Service

### AUSTRIA (AT)

/

**Huppenkothen GmbH**

Bundesstraße 117 / 6923 Lauterach

T +43 50 663 400

info@huppenkothen.com

The complete  
Huppenkothen  
product range

