

**TAKEUCHI**  
**TB230**

Mini excavator with cabin or canopy



**The Takeuchi TB230 mini excavator is the best proof that even with a mini excavator you don't have to do without comfort.**

Thanks to its compact dimensions, it is ideally suited for transport with a small trailer and is the ideal partner, especially on narrow construction sites. Thanks to its extensive equipment, it is ready for any task.



- » 1<sup>st</sup> hydraulic circuit, with proportional control with 54 l/min
- » 4 hydraulic circuits, 3 of which have proportional control; adjustable flow rates
- » LED worklights for optimum illumination of working area
- » Available in 2 versions: with canopy or with comfort cabin



**For three hours, two days or a whole year** - if you need it for your construction site, you can **rent and buy** your TB230 from us.

[www.huppenkothen.com](http://www.huppenkothen.com)



# Huppenkothen added-value equipment:

**There is additional equipment that everyone wants.**

You therefore get all as standard from Huppenkothen. This makes your excavator more effective, faster and more comfortable.

**Put simply – added value.**



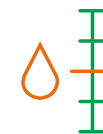
Exclusive  
additional  
equipment



Powerful



Spacious and  
comfortable  
operator cabin



Adjustable  
flow rates

## **COMFORT EQUIPMENT**

**Comfort cabin** ROPS (ISO12117-2) / OPG (ISO10262 Level I) / TOPS (ISO12117)

**5,7" multifunction colour display**

**Heating and Bluetooth-radio** (only version with cabin)

**Rear window heating with wiper** (only version with cabin)

**Mechanically cushioned comfort seat**

**HFM (HUPPIFleetManagement)** – telematics system with 4 year term of use, extended for additional charge

**ECO mode** – to increase economic efficiency

**Automatic idle speed control** – optimised fuel consumption

**Sun shield** (only version with cabin)

## **TECHNICAL AND SAFETY EQUIPMENT**

**Double air filter** – additional protection for the engine

**Spring-loaded accumulator on parking brake**

**Spring-loaded accumulator on slew brake**

**Electric refuelling pump**

**Pressure accumulator** for pressure relief of hydraulic circuits and emergency boom lowering

**Storage compartment with on-board toolkit**

**Acoustic overload warning device** (EN474-5)

**LED worklights**

2 x cab at front, 1 x engine hood at front, 1 x boom

**Socket on cab roof** for rotary beacon

## **HYDRAULICS**

**4 hydraulic auxiliary circuits**, 3 of which have proportional control

**Flow rates adjustable on the display**

1<sup>st</sup> circuit: 3 memories, 2<sup>nd</sup>/4<sup>th</sup> circuit: 1 memory

**1<sup>st</sup> hydraulic auxiliary circuit, with proportional control** – max. 54 l/min

**2<sup>nd</sup> hydraulic auxiliary circuit, with proportional control** – max. 21,6 l/min

**3<sup>rd</sup> hydraulic auxiliary circuit**, for hydraulic quick change plate HUPPlate H

**4<sup>th</sup> hydraulic auxiliary circuit, with proportional control** – max. 21,6 l/min

**Detent Mode** – breaker line continuous operation

**Hydraulic tank ventilation**

**Pilot-opened load-holding valve on boom cylinder and arm cylinder**

**End position damping at boom and swing cylinder**

**Optional additional  
equipment and services**

### **HUPPLub**

Huppenkothen central lubrication system to ensure everything runs even more smoothly.

/

### **HUPPTronic**

Digital assistance for excavator operators – economical, comfortable and intuitive to use.

/

### **HUPPIWarranty**

Extended premium warranty package with all-round protection.

/

### **HUPPIFleetManagement**

An eye on every machine at all times with fleet management. First 4 years included in purchase price.





MAIN DIMENSIONS	
Service weight* (kg)	2.960 (canopy) / 3.020 (cabin)
Total width (mm)	1.460
Overall height (mm)	2.540 (canopy) / 2.525 (cabin)
Transport length - dozer blade at the rear (mm)	4.730
Digging depth (mm)	2.835
Reach (mm)	4.850
Arm length (mm)	1.445
Tail swing radius (mm)	1.330
Tracks	Rubber
Track width (mm)	300
Ground contact (mm)	1.440
Ground pressure (kg/cm <sup>2</sup> )	0,29 (canopy) / 0,293 (cabin)
Ground clearance (mm)	245
Dozer blade dimensions (mm)	1.450 x 355

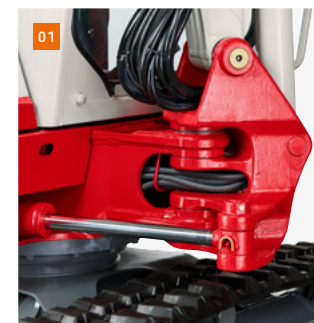
\* Machine weight + PT + quick change plate + medium size bucket + half a tank of diesel

ENGINE	
Type	Yanmar 3TNV88F 3-cylinder diesel engine Stage V emission level
Rated output ISO14396 (kW)	18,2 kW @ 2.400 r.p.m.
Displacement (cm <sup>3</sup> )	1.642
Fuel tank (l)	46

WORK PERFORMANCE	
Travel speed (km/h)	2,9 (1 <sup>st</sup> gear) / 5,2 (2 <sup>nd</sup> gear)
Slew speed (rpm)	10,3
Gradeability (degrees/%)	30 / 58
Boom swing angle l/r (°)	79 / 58
Digging force bucket (kN)	20,9
Digging force arm (kN)	12,9
Digging force boom (kN)	15,4

HYDRAULIC SYSTEM	
Hydraulic pumps	Double variable axial piston pump + 2 x gear pump
Pump pressure (bar)	210 x 210 x 200 x 34
Flow rate (l/min)	32,4 x 32,4 x 21,6 x 10,8
Hydraulic tank (l)	35 (tank) / 56 (total)
Slew motor type	Axial piston motor, rigid
Travel motor type	Axial piston motor, variable

AUXILIARY CONTROL CIRCUITS	
1 <sup>st</sup> control circuit hydraulic breaker (l / min) adjustable flow rate 3 memories for the flow rates	54
2 <sup>nd</sup> /4 <sup>th</sup> control circuit Powertilt / grab (l / min) adjustable flow rate 1 memory for the flow rate	21,6



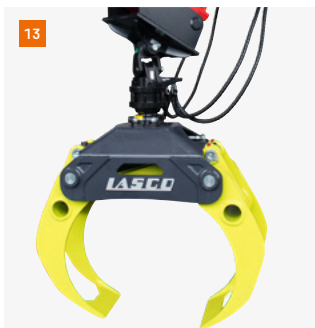
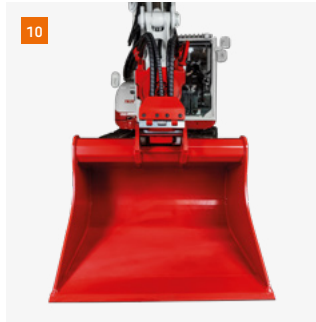
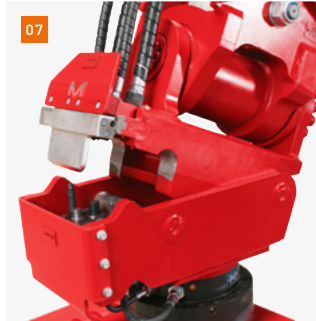
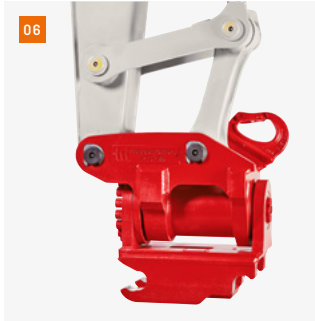
**01** Robust boom swing assy with specially protected hose guide and hydraulic boom swing; lifting and swing cylinder with end position damping.

**02** Sound-damped, low-vibration comfort cab with mechanically cushioned comfort seat (only version with cabin).

**03** User-friendly arrangement of the additional functions.

**04** Generous maintenance hatches for optimum accessibility to hydraulic and fuel maintenance components, battery and radiator cleaning.

**05** Track rollers with inner and outer guide for safe rubber track running. Double short-pitch rubber tracks for low-vibration driving.



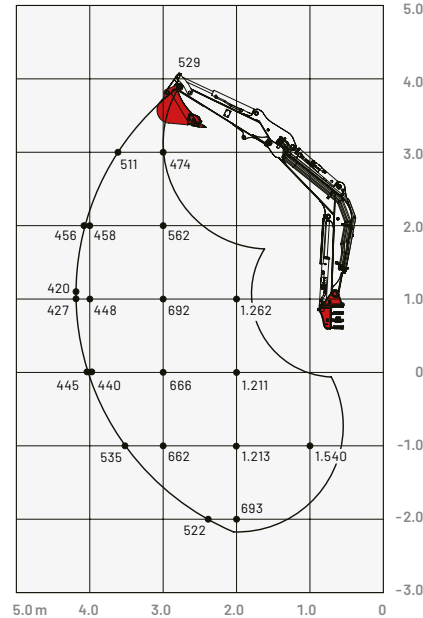
- 06** HUPPTilt tilt device with hydraulic quick change plate HUPPPlate H
- 07** HUPPQuick quick coupling system: Hydraulic connections are connected automatically during the quick coupling process
- 08** HUPPBREAK hydraulic breaker 40
- 09** HUPPGrip universal grabber 40 with HUPPTilt
- 10** HUPPTilt with HUPPPlate H, digging bucket can be mounted as high bucket
- 11** Earth drill - X2500
- 12** Add-on compactor - Ammann APA20/30
- 13** Wood grapple - Lasco LA1200HZ



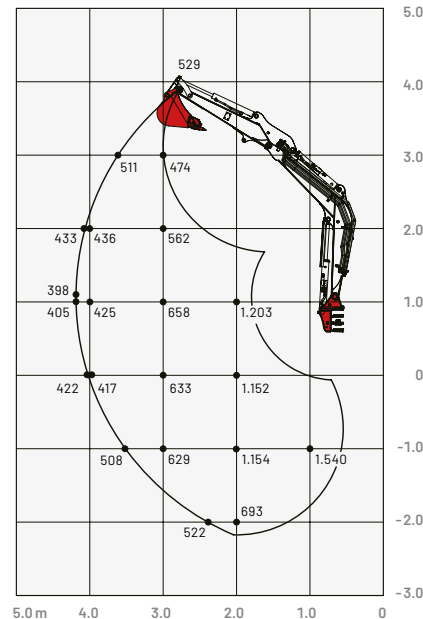
More accessories at  
[huppenkothen.com/  
 excavator-accessories](http://huppenkothen.com/excavator-accessories)

## Lifting load (kg)

### Cabin, forward (upper dozer blade)



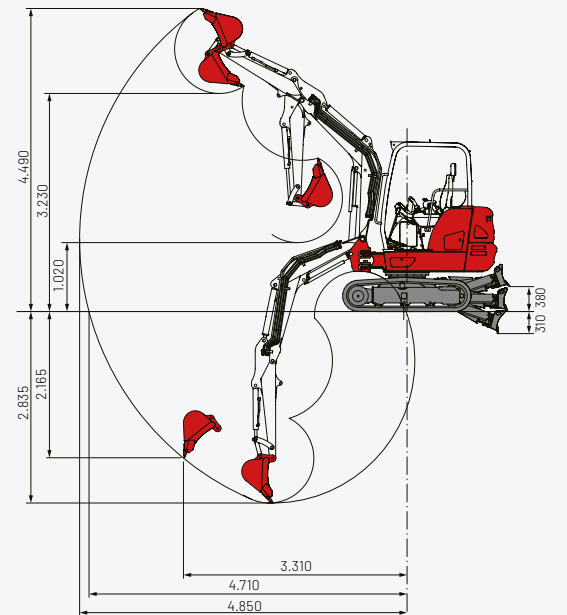
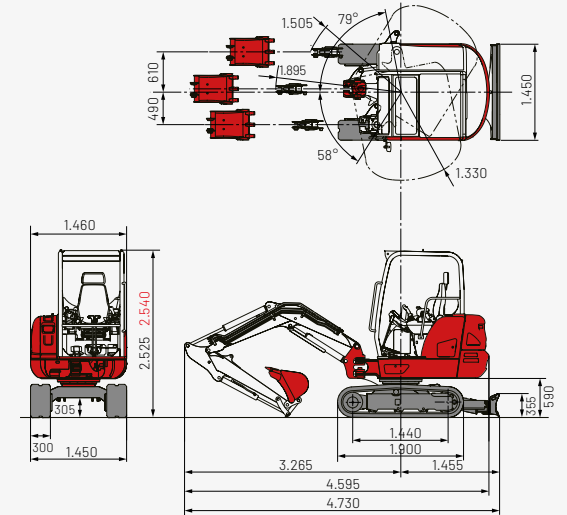
### Canopy, forward (upper dozer blade)



## Dimensions (mm)

**Black:** cabin and canopy

**Red:** alternative dimensions canopy



The loads in the diagram are within 87% of the hydraulic lifting load and within 75% of the tipping load.

## Huppenkothen – your construction site, your partner, your success!

If you're looking to buy or rent a construction machine, if quality is important to you and you have no time to lose, then you've come to the right place with Huppenkothen. We provide all you need for your construction site. If you have any questions:

**We are always available.**

**42**

Locations

**410**

Employees

**4.500+**

Machines

**100 %**

Service

### AUSTRIA (AT)

/

**Huppenkothen GmbH**

Bundesstraße 117 / 6923 Lauterach

T +43 50 663 400

info@huppenkothen.com

The complete  
Huppenkothen  
product range

