



TAKEUCHI

TB320

Mini excavator with canopy or cabin

The **TB320** is an incredibly powerful 2-tonne mini excavator with a large lifting capacity. You can use a variety of attachments on the TB320 as it is equipped with best-in-class hydraulic flow of 40 l/min on the 1st hydraulic circuit. With the Undercarriage retracted, it's manoeuvrable in the tightest of city alleys or when doing renovation work inside buildings. For maximum stability, you can easily extend the undercarriage hydraulically.



- » 1st hydraulic circuit, with proportional control with 40 l/min
- » 4 hydraulic circuits, 3 of which have proportional control
- » Hydraulic track width adjustment - for more stability
- » Lifting cylinder is designed as a neck cylinder and offers optimum protection even during demolition work
- » Available in 2 versions: with canopy or with comfort cabin



For three hours, two days or a whole year - if you need it for your construction site, you can **rent and buy** your TB320 from us.

www.huppenkothen.com



Huppenkothen added-value equipment:

There is additional equipment that everyone wants.

You therefore get all as standard from Huppenkothen. This makes your excavator more effective, faster and more comfortable.

Put simply – added value.

HYDRAULICS

4 hydraulic auxiliary circuits, 3 of which have proportional control
1 st hydraulic auxiliary circuit, with proportional control – max. 40 l/min
2 nd hydraulic auxiliary circuit, with proportional control – max. 11,3 l/min
3 rd hydraulic auxiliary circuit, for hydraulic quick change plate HUPPlate H
4 th hydraulic auxiliary circuit, with proportional control – max. 11,3 l/min
Hydraulic track width adjustment – for more stability
Mechanical switch valve – pressureless return flow for breaker operation
Hydraulic tank ventilation
Pilot-opened load-holding valve on boom cylinder
End position damping at boom and swing cylinder



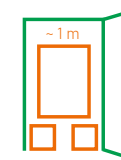
Exclusive
additional equipment



Powerful



Variable
track width



Compact

COMFORT EQUIPMENT

Canopy/Cabin ROPS (ISO 12117-2) / OPG (ISO 10262 Level I) / TOPS (ISO 12117)

3,5" LCD-display incl. fuel and temperature indicator

Heating and Bluetooth DAB Radio (only cabin version)

Rear window heating with wiper (only cabin version)

Mechanically cushioned comfort seat

HFM Basic (HUPPIFleetManagement) – telematics system with 4 year term of use, extended for additional charge

TECHNICAL AND SAFETY EQUIPMENT

Double air filter – additional protection for the engine

Spring-loaded accumulator on parking brake

Spring-loaded accumulator on slew brake

Pressure accumulator for pressure relief of hydraulic circuits and emergency boom lowering

Lifting points on the roof (only cabin version)

Acoustic overload warning device (EN 474-5)

LED worklights – 2 x cabin/canopy at front, 1 x boom

Storage compartment with on-board toolkit

Socket for rotary beacon (only cabin version)

Dozer blade with extensions – depending on track width

Sun shield (only cabin version)



Optional
additional services



HUPPIWarranty

Extended premium warranty package with all-round protection.
/

HUPPIFleetManagement

An eye on every machine at all times with fleet management. First 4 years included in purchase price.

MAIN DIMENSIONS	
Service weight* (kg)	2.025 (canopy) 2.165 (cabin)
Total width (mm)	985 (canopy) 1.050 (cabin) 1.370**
Overall height (mm)	2.300 (canopy) 2.375 (cabin)
Transport length - dozer blade at the rear (mm)	4.245
Digging depth (mm)	2.370
Reach (mm)	4.090
Arm length (mm)	1.130
Tail swing radius (mm)	1.110
Tracks	Rubber
Track width (mm)	230
Ground contact (mm)	1.205
Ground pressure (kg/cm ²)	0,32 (canopy) 0,34 (cabin)
Ground clearance (mm)	205
Dozer blade dimensions (mm)	980 (1.370**) x 300

* Machine weight + HUPPTilt + HUPPPlate + medium size bucket + half a tank of diesel

** max. track width

ENGINE

Type	Yanmar 3TNV70 3-cylinder diesel engine Stage V emission level
Rated output ISO14396 (kW)	12 kW @ 2.500 r.p.m.
Displacement (cm ³)	854
Fuel tank (l)	22

WORK PERFORMANCE

Travel speed (km/h)	2,2 (1 st gear) / 4,5 (2 nd gear)
Slew speed (rpm)	9,5
Gradeability (degrees/%)	15 / 27
Boom swing angle l/r (°)	78 / 49

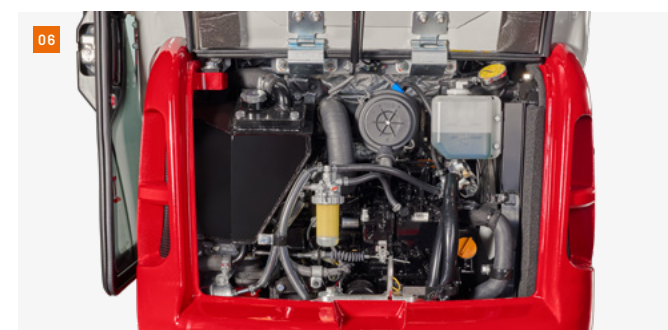
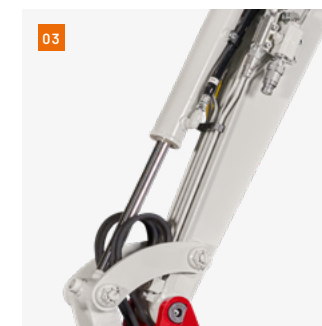
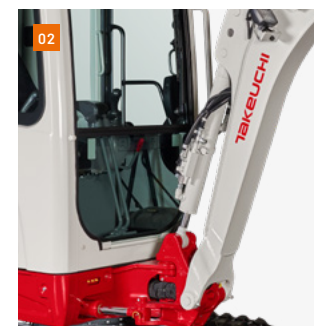
Digging force bucket (kN)	17
Digging force arm (kN)	9,1
Digging force boom (kN)	9,2

HYDRAULIC SYSTEM

Hydraulic pumps	Double variable axial piston pump + 2 x gear pump
Pump pressure (bar)	210 x 210 x 180 x 34
Flow rate (l/min)	20 x 20 x 10,3 x 6,8
Hydraulic tank (l)	16 (Tank) / 35 (total)
Slew motor type	Axial piston motor, rigid
Travel motor type	Axial piston motor, variable

AUXILIARY CONTROL CIRCUITS

1 st control circuit hydraulic breaker (l/min)	40
2 nd / 4 th control circuit Powertilt / grab (l/min)	11,3



01 Ergonomic workplace for fatigue-free work.

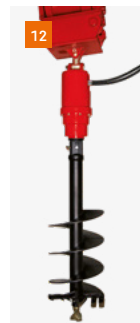
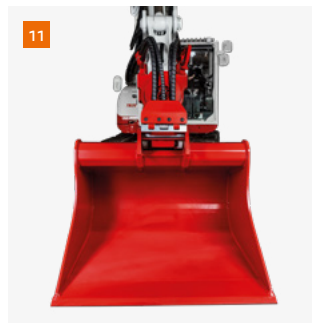
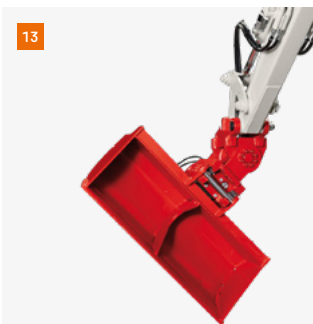
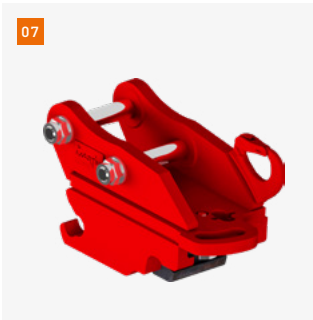
02 Boom cylinder is designed as a neck cylinder and offers optimum protection even during demolition work.

03 Long stick arm with 4 control circuits as standard, 3 of which have proportional control, for a wide range of implements; load-holding valves on boom cylinder; upper mount of AUX3 circuit (quick change plate HUPPPlate H) and AUX4 circuit (HUPPTilt)

04 Hydraulic track width adjustment - for more stability.

05 Lockable storage compartment for grease gun.

06 Generous maintenance hatch for optimum accessibility to hydraulic and fuel maintenance components, battery and radiator.



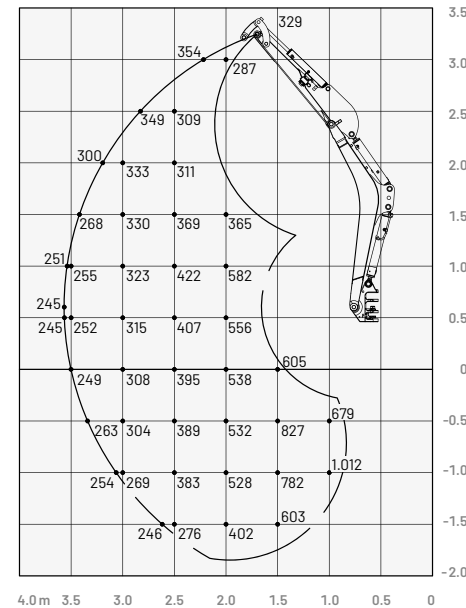
- 07 Mechanical quick change plate HUPPlate M
- 08 HUPPTilt tilt device with hydraulic quick change plate HUPPlate H
- 09 HUPBreak 20 hydraulic breaker
- 10 HUPPGrip universal grabber U20 II with HUPPTilt
- 11 HUPPTilt with hydraulic quick change plate HUPPlate H, digging bucket can be mounted as high bucket
- 12 Earth drill - X2500
- 13 HUPPTilt with fixed trench bucket
- 14 Ripper Martin



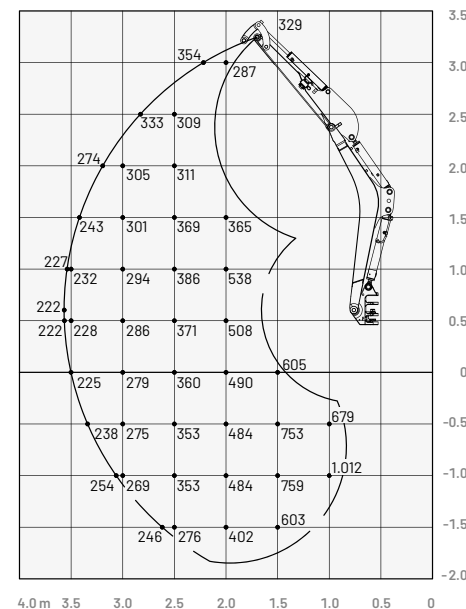
More accessories at
[huppenkothen.com/
excavator-accessories](http://huppenkothen.com/excavator-accessories)

Lifting load (kg)

Cabin, forward (upper dozer blade)



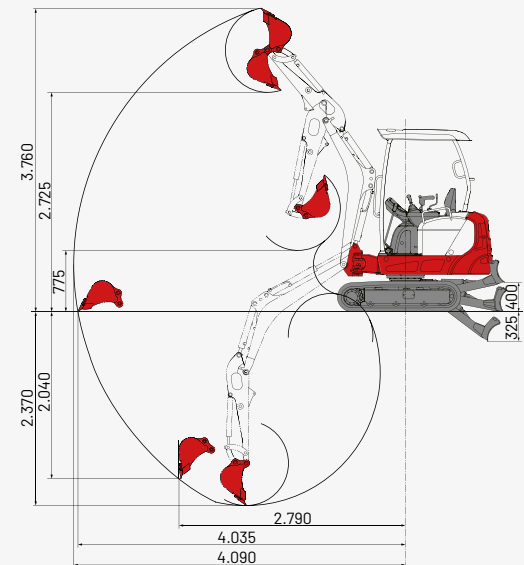
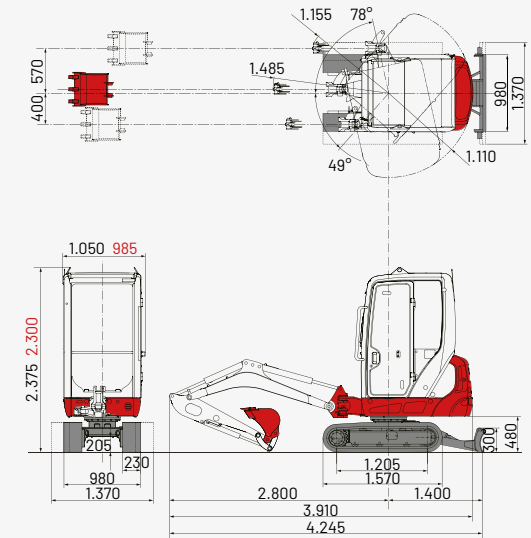
Canopy, forward (upper dozer blade)



Dimensions (mm)

Black: cabin and canopy

Red: alternative dimensions canopy



The loads in the diagrams on the left are within 87% of the hydraulic lifting load and within 75% of the tipping load.

Huppenkothen – your construction site, your partner, your success!

If you're looking to buy or rent a construction machine, if quality is important to you and you have no time to lose, then you've come to the right place with Huppenkothen. We provide all you need for your construction site. If you have any questions:

We are always available.

42

Locations

410

Employees

4.500+

Machines

100 %

Service

AUSTRIA (AT)

/

Huppenkothen GmbH

Bundesstraße 117 / 6923 Lauterach

T +43 50 663 400

info@huppenkothen.com

The complete
Huppenkothen
product range

