



takeuchi

TB216

Mini excavator with cabin or canopy

The **TB216** has been one of our best-selling models for years. It impresses with its manoeuvrability on narrow construction sites or during renovation work in buildings. The boom cylinder, which is designed as a neck cylinder, offers optimum protection. Thanks to its hydraulically widenable undercarriage, the TB216 has unsurpassed stability.



- » 1st hydraulic circuit, with proportional control with 33,6 l/min
- » 3 hydraulic circuits, 2 of which have proportional control
- » Hydraulic track width adjustment - for more stability
- » Lifting cylinder is designed as a neck cylinder and offers optimum protection even during demolition work
- » Available in 2 versions: with canopy or with comfort cabin



For three hours, two days or a whole year - if you need it for your construction site, you can **rent and buy** your TB216 from us.

www.huppenkothen.com



Huppenkothen added-value equipment:

There is additional equipment that everyone wants.

You therefore get all as standard from Huppenkothen. This makes your excavator more effective, faster and more comfortable.

Put simply – added value.

HYDRAULICS

- 3 hydraulic auxiliary circuits, 2 of which have proportional control
- 1st hydraulic auxiliary circuit, with proportional control – max. 33,6 l/min
- 2nd hydraulic auxiliary circuit, with proportional control – max. 10,8 l/min
- 3rd hydraulic auxiliary circuit, for hydraulic quick change plate HUPPlate H
- Hydraulic track width adjustment – for more stability
- Mechanical switch valve – pressureless return flow for breaker operation
- Hydraulic tank ventilation
- Pilot-opened load-holding valve on boom cylinder
- End position damping at boom and swing cylinder



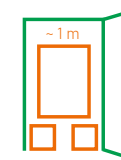
Exclusive
additional equipment



Powerful



Variable
track width



Compact

COMFORT EQUIPMENT

- Canopy/Cabin ROPS (ISO 12117-2) / OPG (ISO 10262 Level I) / TOPS (ISO 12117)
- 3,5" LCD-display incl. fuel and temperature indicator
- Heating and radio (only cabin version)
- Rear window heating with wiper (only cabin version)
- Mechanically cushioned comfort seat
- HFM Basic (HUPPIFleetManagement) – telematics system with 4 year term of use, extended for additional charge

TECHNICAL AND SAFETY EQUIPMENT

- Double air filter – additional protection for the engine
- Spring-loaded accumulator on parking brake
- Spring-loaded accumulator on slew brake
- Pressure accumulator for pressure relief of hydraulic circuits and emergency boom lowering
- Lifting points on the roof (only cabin version)
- Acoustic overload warning device (EN 474-5)
- LED worklights
2 x canopy at front / 1 x cabin at front, 1 x boom
- Storage compartment with on-board toolkit
- Socket for rotary beacon (only cabin version)
- Dozer blade with extensions – depending on track width
- Sun shield (only cabin version)

Optional
additional services



- HUPPIWarranty**
Extended premium warranty package with all-round protection.
- /
- HUPPIFleetManagement**
An eye on every machine at all times with fleet management. First 4 years included in purchase price.

MAIN DIMENSIONS	
Service weight* (kg)	1.860 (canopy) 1.960 (cabin)
Total width (mm)	985 (canopy) 1.055 (cabin) 1.300**
Overall height (mm)	2.280 (canopy) 2.360 (cabin)
Transport length - dozer blade at the rear (mm)	4.040
Digging depth (mm)	2.390
Reach (mm)	4.090
Arm length (mm)	1.130
Tail swing radius (mm)	1.075
Tracks	Rubber
Track width (mm)	230
Ground contact (mm)	1.155
Ground pressure (kg/cm ²)	0,29 (canopy) 0,31 (cabin)
Ground clearance (mm)	205
Dozer blade dimensions (mm)	980 (1.300**) x 310

* Machine weight + PT + quick change plate + medium size bucket + half a tank of diesel

** max. track width

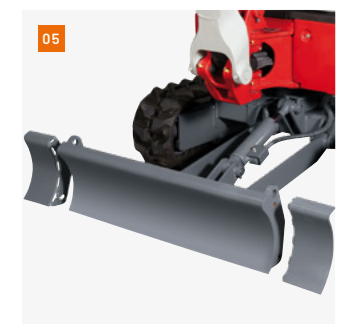
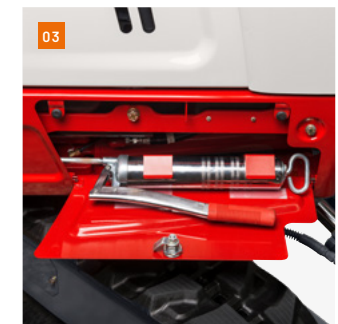
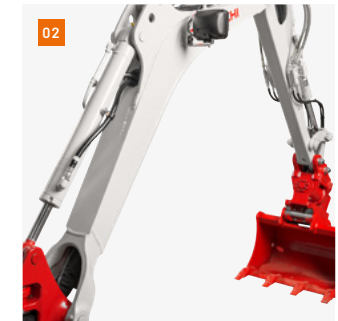
ENGINE	
Type	Yanmar 3TNV70 3-cylinder diesel engine Stage V emission level
Rated output ISO14396 (kW)	11,5 kW @ 2.400 r.p.m.
Displacement (cm ³)	854
Fuel tank (l)	22

WORK PERFORMANCE	
Travel speed (km/h)	2,2 (1 st gear) / 4,2 (2 nd gear)
Slew speed (rpm)	9,2
Gradeability (degrees/%)	15 / 27
Boom swing angle l/r (°)	80 / 50

Digging force bucket (kN)	14
Digging force arm (kN)	8,2
Digging force boom (kN)	7,4

HYDRAULIC SYSTEM	
Hydraulic pumps	Double variable axial piston pump + 2 x gear pump
Pump pressure (bar)	210 x 210 x 200 x 34
Flow rate (l/min)	16,8 x 16,8 x 10,8 x 6,5
Hydraulic tank (l)	16 (Tank) / 24,5 (total)
Slew motor type	Axial piston motor, rigid
Travel motor type	Axial piston motor, variable

AUXILIARY CONTROL CIRCUITS	
1 st control circuit hydraulic breaker (l / min)	33,6
2 nd control circuit Powertilt / grab (l / min)	10,8



01 Ergonomic workplace for fatigue-free work.

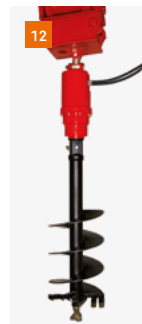
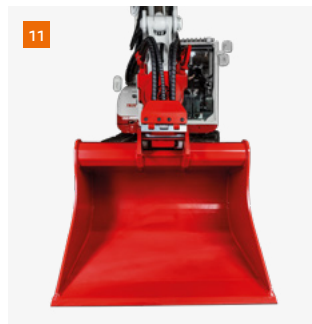
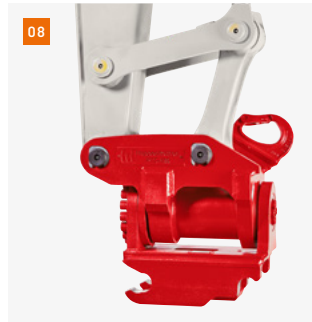
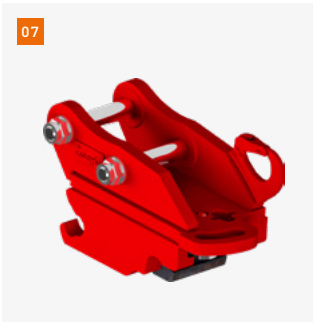
02 Boom cylinder is designed as a neck cylinder and offers optimum protection even during demolition work.

03 Lockable storage compartment for grease gun.

04 Hydraulic track width adjustment - for more stability.

05 Long dozer blade made of torsion-free steel with manual widening.

06 Generous maintenance hatch for optimum accessibility to hydraulic and fuel maintenance components, battery and radiator.



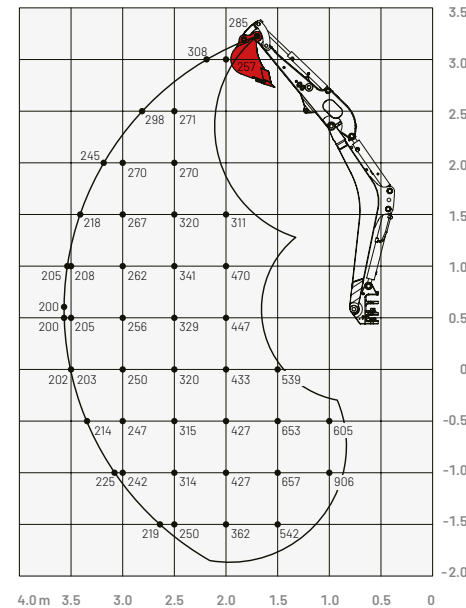
- 07 Mechanical quick change plate HUPPlate M
- 08 HUPPTilt tilt device with hydraulic quick change plate HUPPlate H
- 09 HUPBreak hydraulic breaker 20
- 10 HUPPGrip 20 universal grabber with HUPPTilt
- 11 HUPPTilt with hydraulic quick change plate HUPPlate H, digging bucket can be mounted as high bucket
- 12 Earth drill - X2500
- 13 HUPPTilt with fixed trench bucket
- 14 Ripper Martin



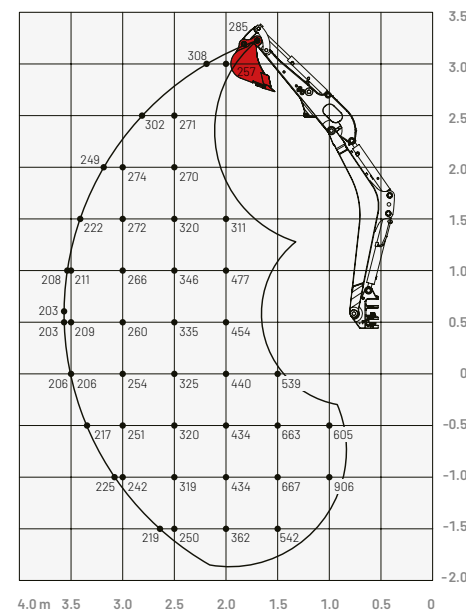
More accessories at
[huppenkothen.com/
 excavator-accessories](http://huppenkothen.com/excavator-accessories)

Lifting load (kg)

Cabin, forward (upper dozer blade)



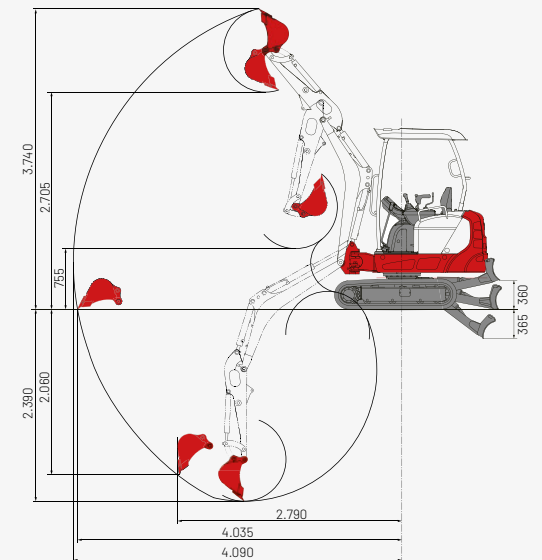
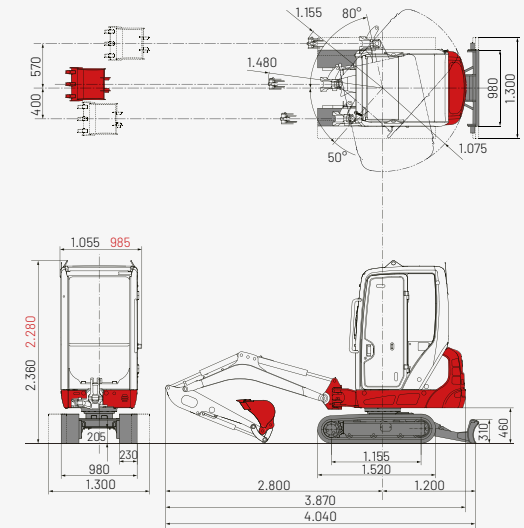
Canopy, forward (upper dozer blade)



Dimensions (mm)

Black: cabin and canopy

Red: alternative dimensions canopy



The loads in the diagrams on the left are within 87% of the hydraulic lifting load and within 75% of the tipping load.

Huppenkothen – your construction site, your partner, your success!

If you're looking to buy or rent a construction machine, if quality is important to you and you have no time to lose, then you've come to the right place with Huppenkothen. We provide all you need for your construction site. If you have any questions:

We are always available.

42

Locations

410

Employees

4.500+

Machines

100 %

Service

AUSTRIA (AT)

/

Huppenkothen GmbH

Bundesstraße 117 / 6923 Lauterach

T +43 50 663 400

info@huppenkothen.com

The complete
Huppenkothen
product range

