



 **Innovari** Real Estate

CASA DE PIEDRA

PLAYACAR, RIVIERA MAYA.



PRINCIPAL ACCESS



Your life begins here.

Welcome to Casa de Piedra, a luxury project that transcends the boundaries of sophistication in Playacar, the fastest-growing and most valuable residential area in Playa del Carmen.

The natural surroundings enveloping Casa de Piedra become an integral part of its design. Each residence seamlessly blends modern comfort with the serenity of nature, creating an environment where tranquility and luxury intertwine in an unparalleled manner.

The luxury of living by the sea.



Playacar, located on the shores of Playa del Carmen, stands as an exclusive paradise that harmoniously blends contemporary luxury with tropical beauty. With 320 hectares and 3 kilometers of beachfront, this gem of the Riviera Maya has carefully integrated the tropical environment, preserving untouched corners and pre-Hispanic vestiges in collaboration with the INAH (National Institute of Anthropology and History), which has identified and protected 57 archaeological sites.



Within this paradisiacal enclave, you'll find impressive facilities such as an aviary housing 70 species of flora and fauna, contributing to the preservation of local biodiversity. This commitment to conservation extends along the 3 kilometers of beach, where white sand meets the turquoise waters of the Caribbean, creating an incomparable scene of beauty.

In addition to its natural and recreational attractions, Playacar provides residents and visitors access to a full range of exclusive services. From high-quality schools and nurseries to hospitals and gyms equipped with pilates and yoga facilities, Playacar is designed to meet all the needs of those seeking a life of luxury and well-being.



In Playacar, exclusivity is manifested in elegant residences, world-renowned hotels, and a golf course designed by the acclaimed Robert Von Hagge. This golf course, in addition to offering exciting challenges, provides panoramic views of the Caribbean, making it a unique destination for golf enthusiasts.

MASTERPLAN



VIEW 360°

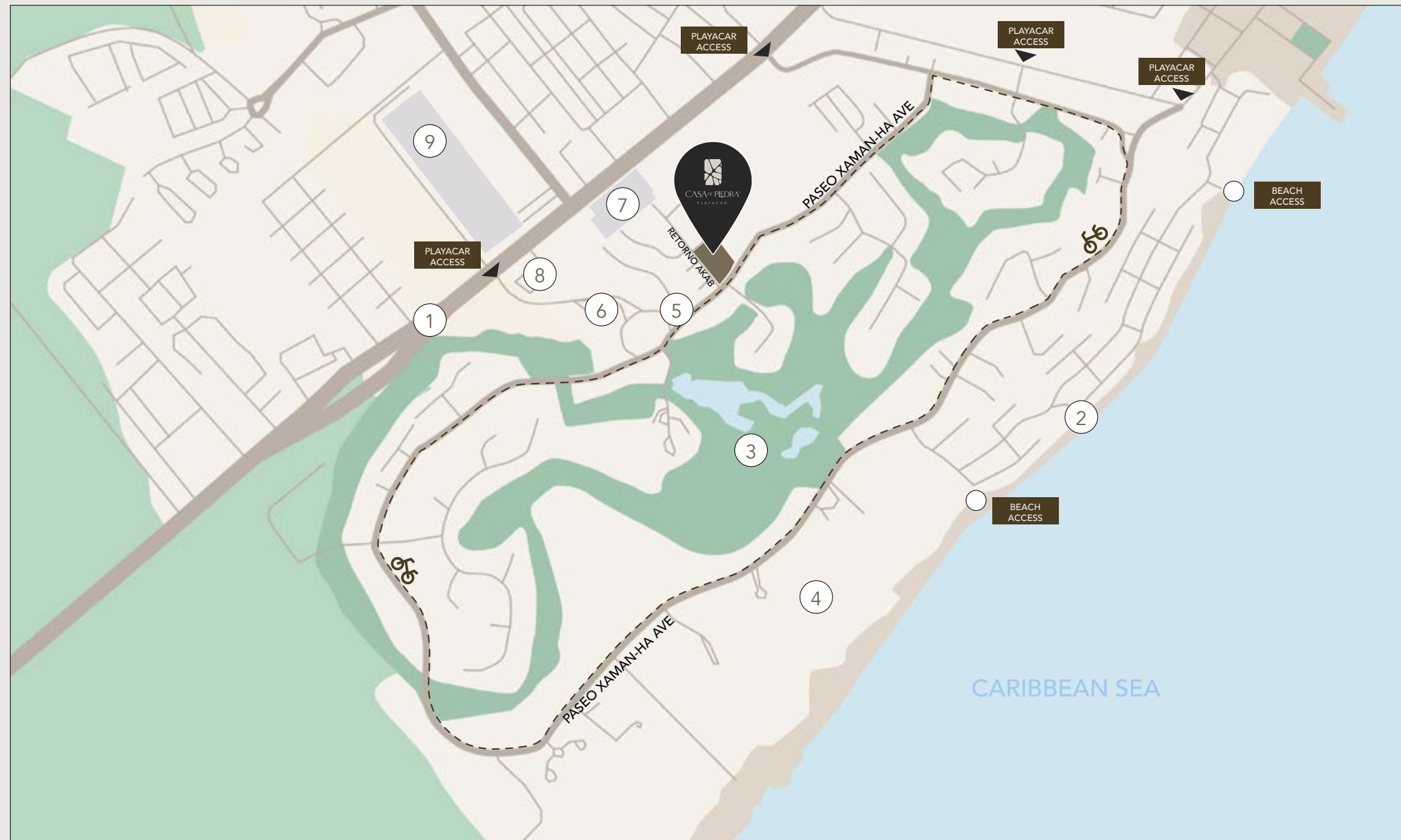
This multifamily development, consisting of only 43 exclusive 1, 2 & 3 bedroom apartments, 4-bedroom townhouses, and luxury penthouses, is majestically distributed across three towers over a total area of 5480 m².



MAP

Nestled in the prestigious development of Playacar, Casa de Piedra stands as a masterpiece of contemporary architecture, surrounded by a natural environment that harmonizes with tropical serenity.

- 1 Playa del Carmen - Tulum highway
- 2 Beach
- 3 Hard Rock Golf Course
- 4 Hotel Zone
- 5 Oxxo
- 6 Paseo Playacar Mall
- 7 Sam's Club
- 8 Hospiten Hospital
- 9 Centro Maya







Authentic amenities.

AMENITIES

- Lobby
- Two pools
- Children's playground
- Paddle court
- Sport club bar
- Executive-Library Area
- Sauna
- Jacuzzi
- Gym
- Yoga & cardio area



POOL



CHILDREN'S PLAYGROUND



PADDLE COURT



SPORT CLUB BAR



GYM



YOGA & CARDIO AREA



SAUNA & JACUZZI



SPA, YOGA, GYM & CARDIO AREA



EXECUTIVE-LIBRARY AREA

TYPOLOGIES



APARTMENT | 1 BEDROOM

SQUARE



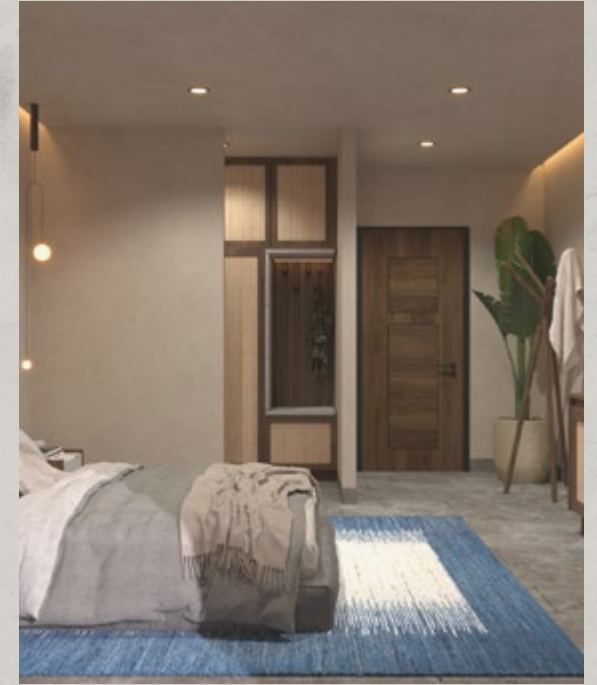
INTERSECTION



PENTHOUSE

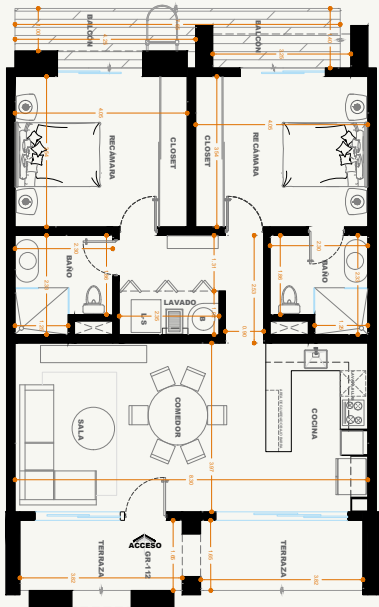


 1  1  1

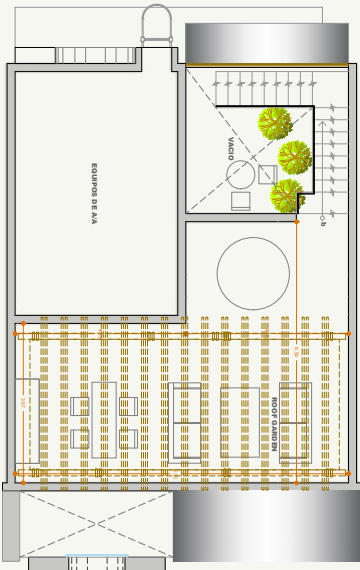
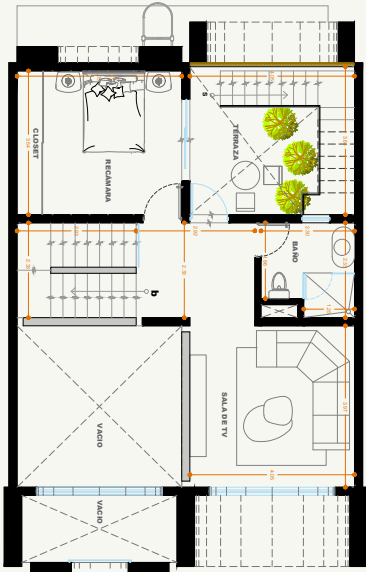
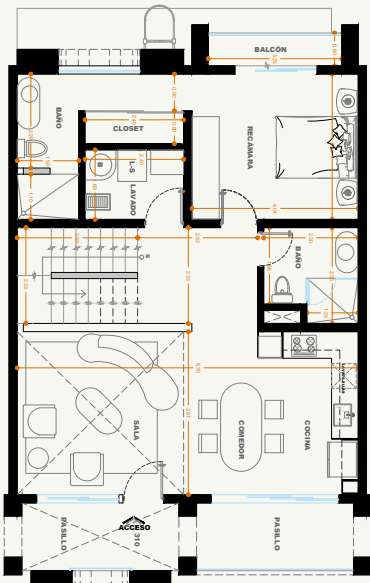


APARTMENT | 2 BEDROOMS

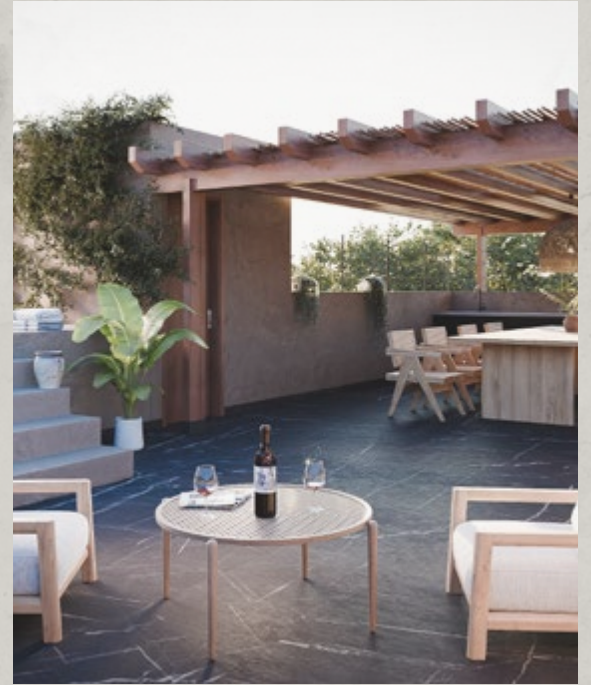
APARTMENT



PENTHOUSE

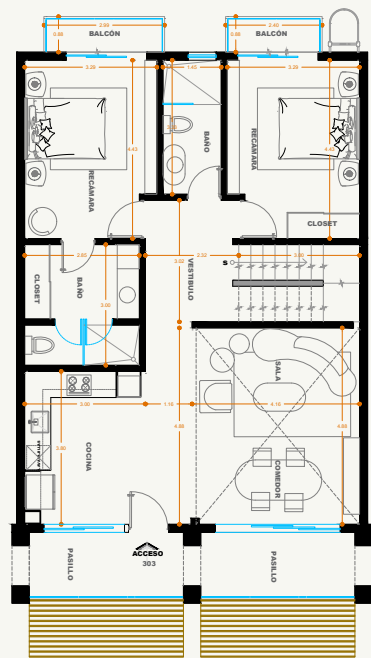


2 2 1

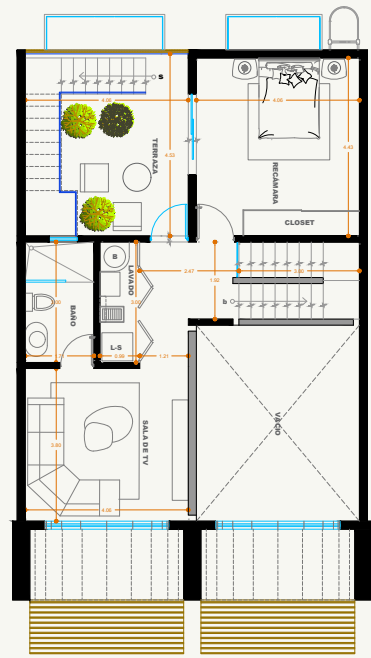


PENTHOUSE | 3 BEDROOMS

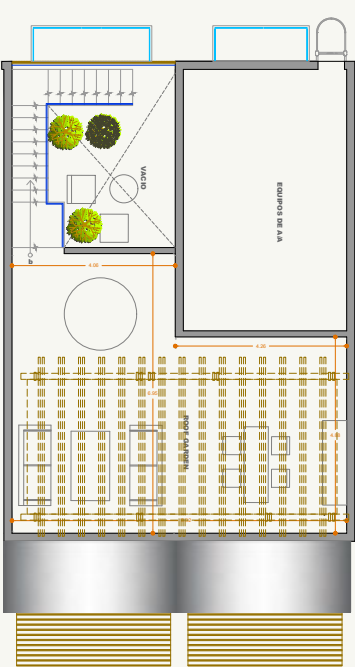
FIRST LEVEL






SECOND LEVEL



ROOFTOP



 3+TV Room  3  2







At Innovari, we don't sell properties.
We create life experiences, freedom, and long-term value.

We connect our clients with unique developments in the Riviera Maya,
blending strategic vision, human sensitivity, and technology.

Meet Samanta, our AI virtual assistant —
fast, clear, and precise.
Because even technology here is designed to guide you better.

Phone: +52 1 55 1566 7552
