

Tolerances unless otherwise stated:
0.00 - 0.3mm
0.0 - 0.5mm
0 - 1mm

All copyrights contained in this drawing is the sole property of Blue Planet Lifestyle Products Pty Ltd, and its contents may not be reproduced without the written consent of the document owner.

Parts to be free from all burrs, flashes, twists, and sink marks.

All dimensions to be taken from 3D model. If in doubt, ask.

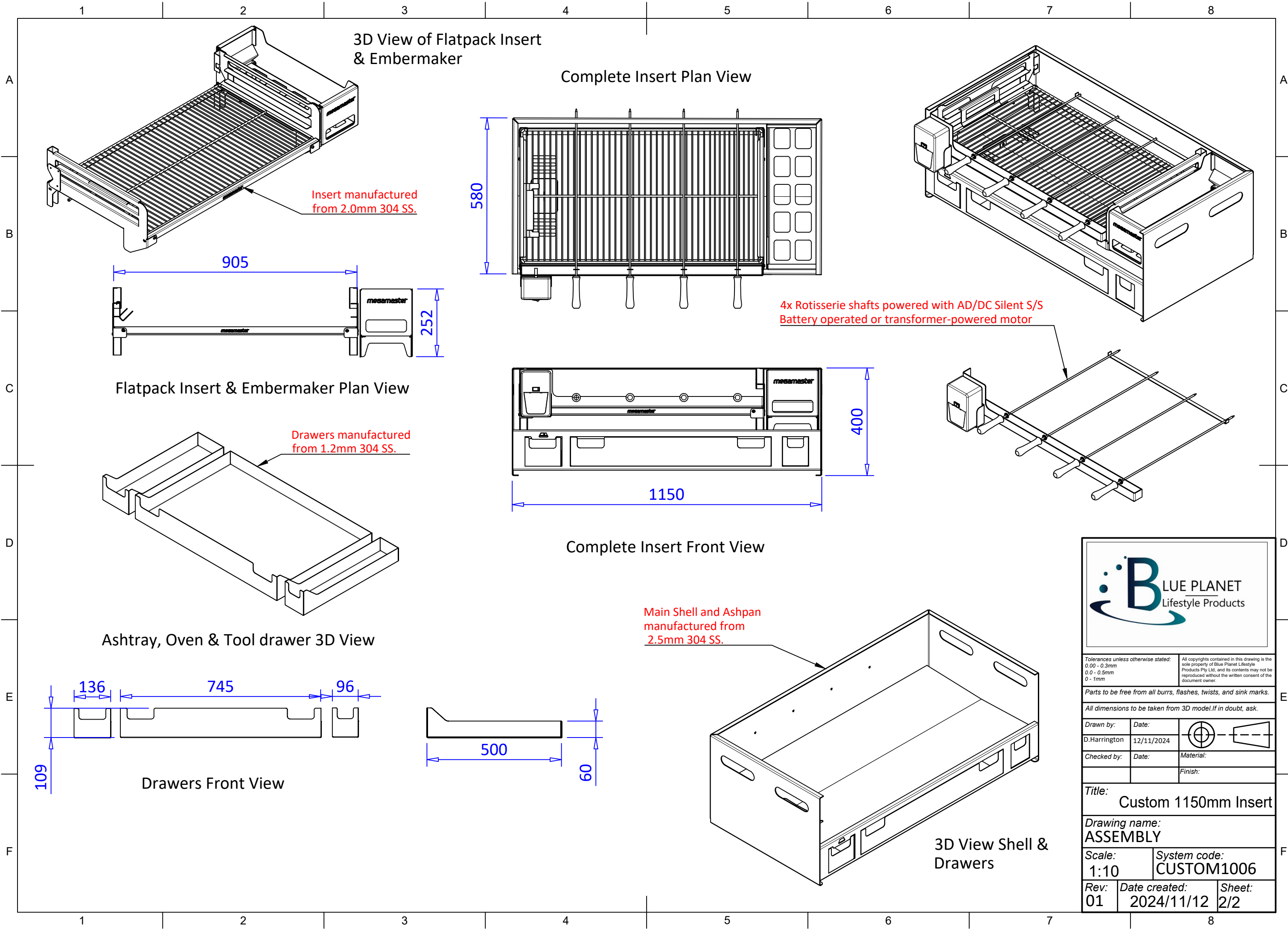
Drawn by:	Date:	
D.Harrington	12/11/2024	
Checked by:	Date:	Material:
		Finish:

Title: Custom 1150mm Insert

Drawing name: DETAIL

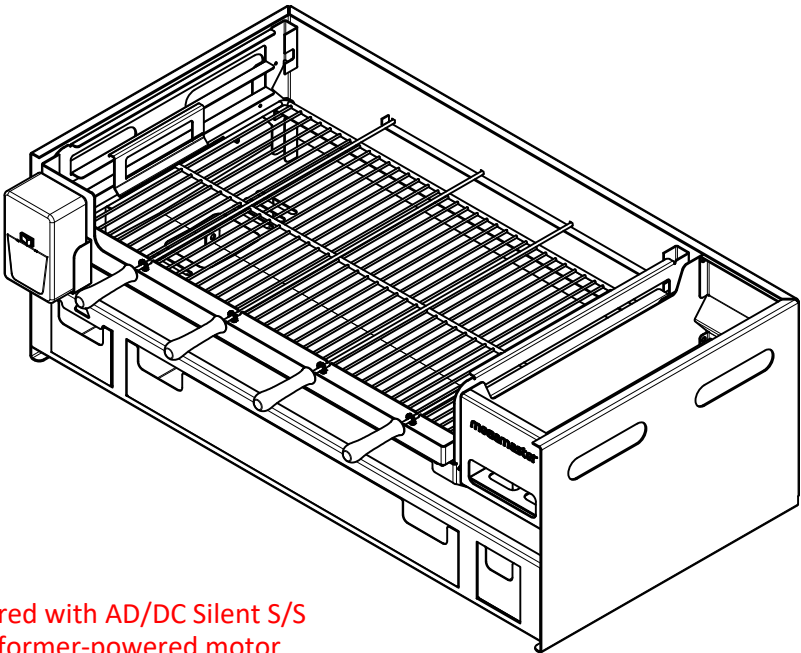
Scale: 1:5 System code: CUSTOM1006

Rev: 01	Date created: 2024/11/12	Sheet: 1/2
---------	--------------------------	------------



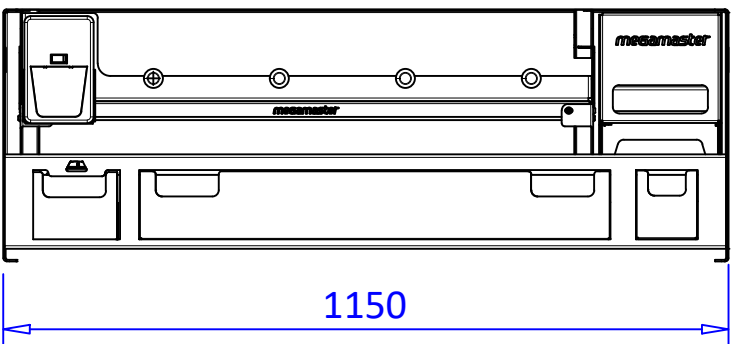
3D View of Flatpack Insert
& Embermaker

Complete Insert Plan View



4x Rotisserie shafts powered with AD/DC Silent S/S
Battery operated or transformer-powered motor

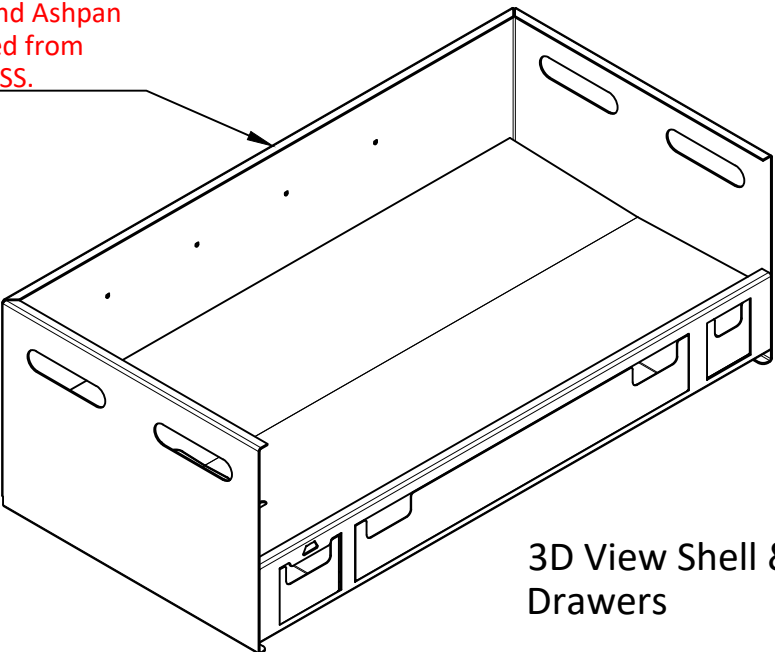
Flatpack Insert & Embermaker Plan View



Complete Insert Front View

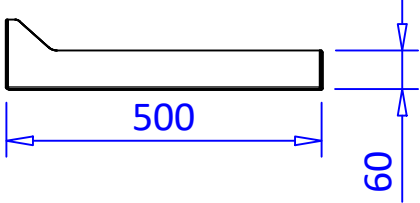
Ashtray, Oven & Tool drawer 3D View


Main Shell and Ashpan
manufactured from
2.5mm 304 SS.



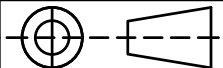
3D View Shell &
Drawers

Drawers Front View





BLUE PLANET
Lifestyle Products

Tolerances unless otherwise stated: 0.00 - 0.3mm 0.0 - 0.5mm 0 - 1mm		All copyrights contained in this drawing is the sole property of Blue Planet Lifestyle Products Pty Ltd, and its contents may not be reproduced without the written consent of the document owner.	
Parts to be free from all burrs, flashes, twists, and sink marks.			
All dimensions to be taken from 3D model. If in doubt, ask.			
Drawn by:	Date:		
D.Harrington	12/11/2024		
Checked by:	Date:	Material:	Finish:
Title: Custom 1150mm Insert			
Drawing name: ASSEMBLY			
Scale: 1:10	System code: CUSTOM1006		
Rev: 01	Date created: 2024/11/12	Sheet: 2/2	