

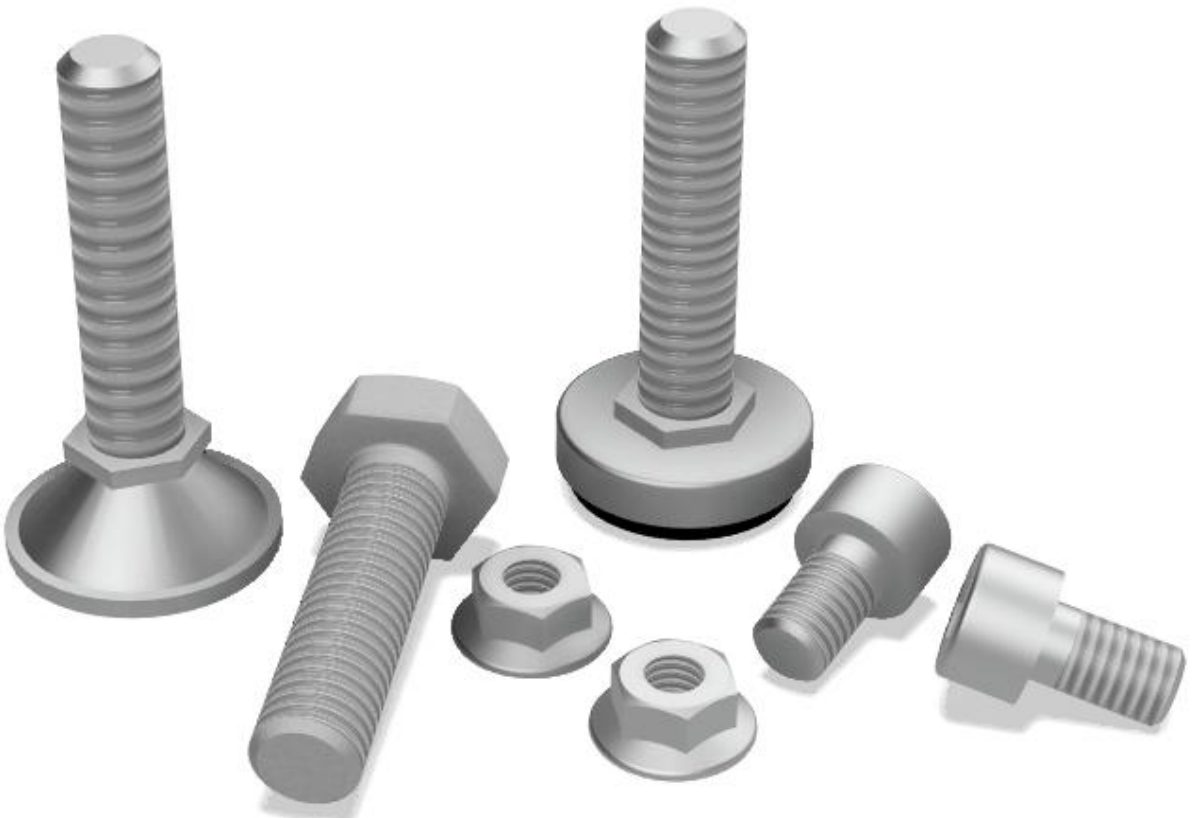
# Accessories

Complete Lean Tube offers a range of accessories such as levelling feet, casters, tow hooks, name plates, insert nuts, material surfaces, guide rails, and fasteners can be added or retrofitted as required. This allows for maximum flexibility in design modifications, upgrades, or maintenance to suit evolving operational needs.

## Stock

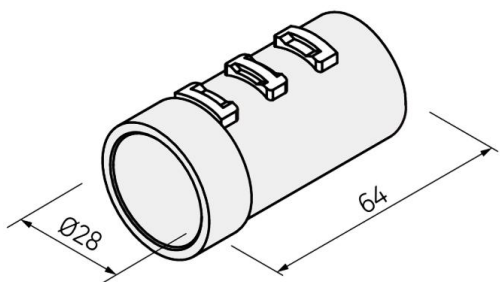
---

Accessories  
Tow Hooks  
Name Plates  
Insert nuts  
Material Surfaces  
Guide Rails  
Fasteners



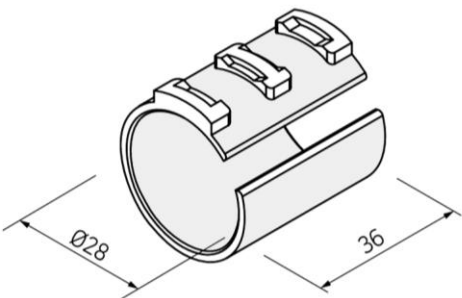
# Accessories

**PJ-140A**



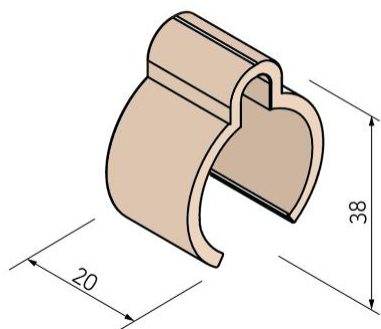
Plastic Joint Sleeve

**PJ-140S**



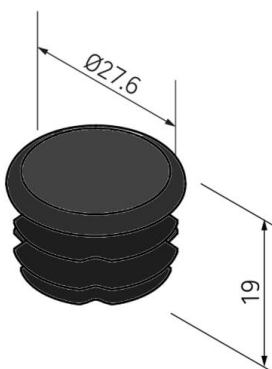
Plastic Joint Sleeve

**PJ-138B**



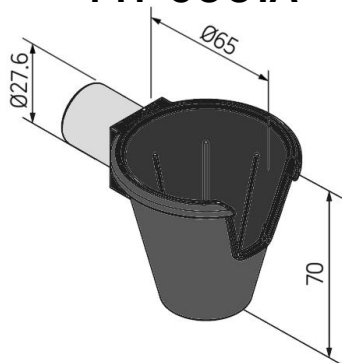
Name Plate Hanger

**PJ-110C**



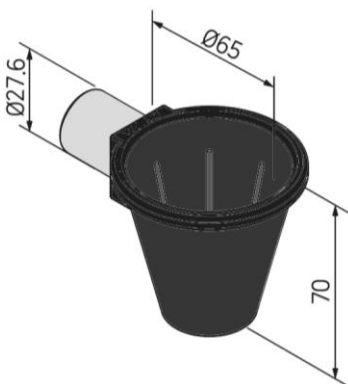
Pipe Inner Cap

**PH-5001A**



Tool Holder A

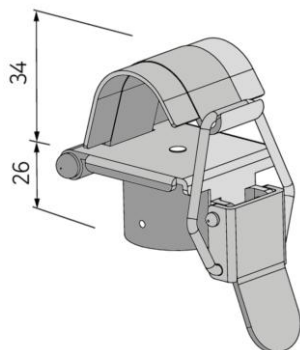
**PH-5001B**



Tool Holder B

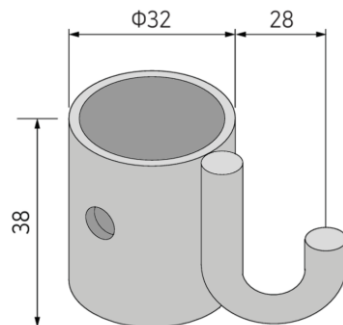
# Accessories

**MT-5126**



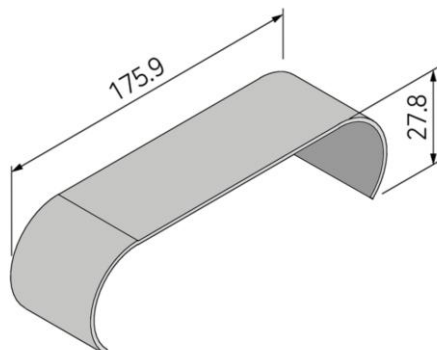
Lock Mount

**MT-5127**



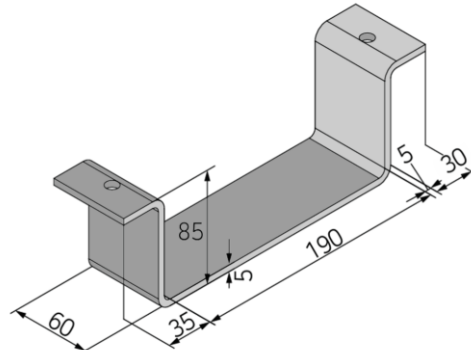
Hanger U-Type

**MS-4018SV**



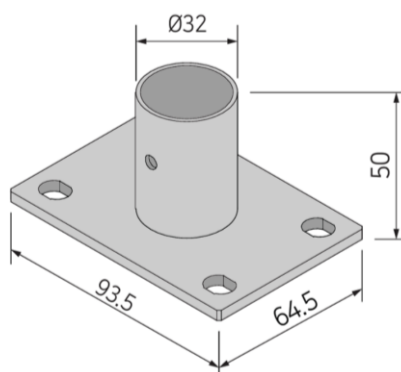
40" Middle Stopper

**MT-5100**



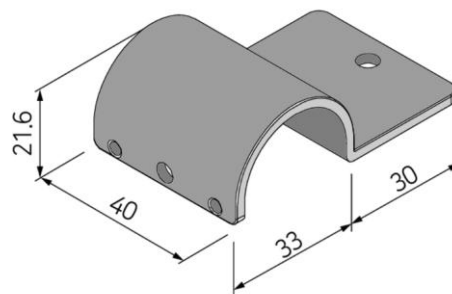
Forklift Hook

**MT-5121**



Stanchion Mount

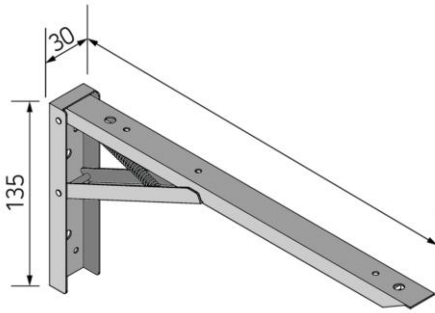
**MT-3113**



Board Fixing-A

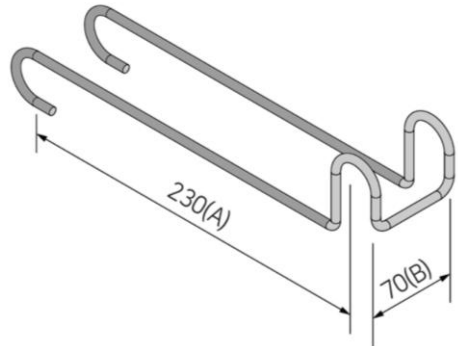
# Accessories

**FS-0200**



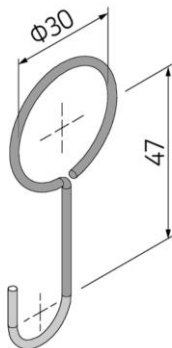
## Folding Shelf Bracket

# WG-0230



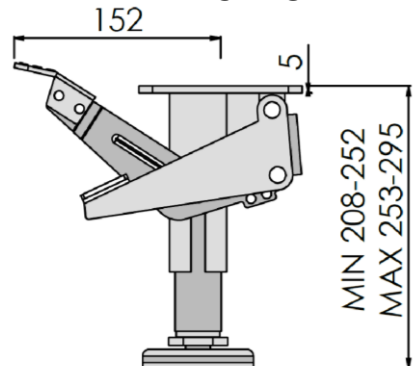
## Wire Guide

# MT-5120



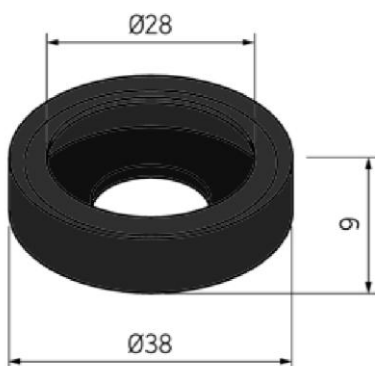
## Hanger Hook

**MT-5148**



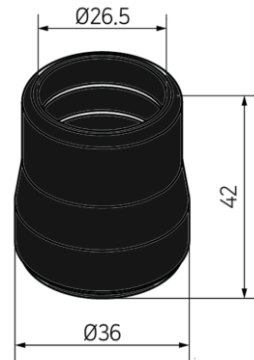
## Floor Lock

**AC-3828RB**



## Rubber Foot Cap

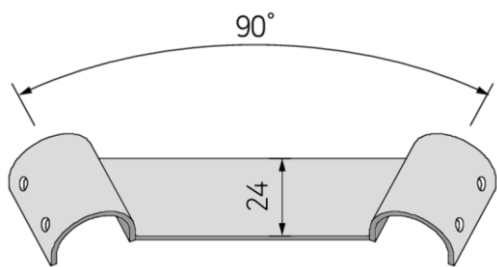
**AC-3829RB**



### Rubber Foot Cap

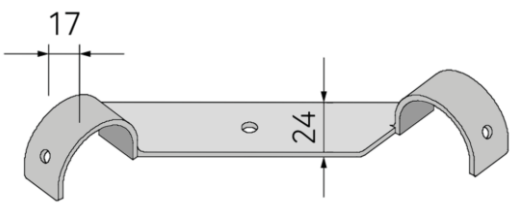
# Accessories

**MT-5116**



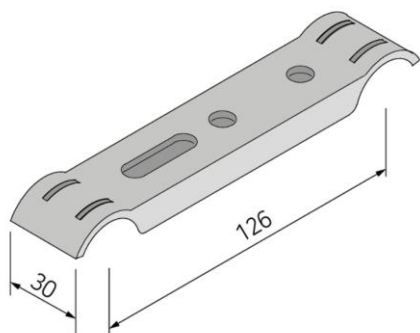
Board Bracket A

**MT-5117**



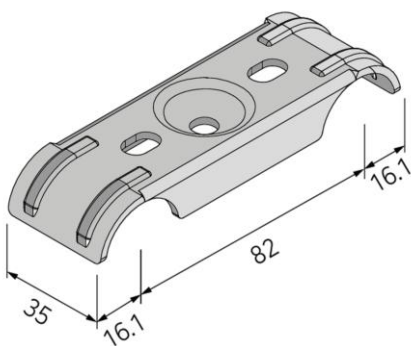
Board Bracket B

**MT-5109**



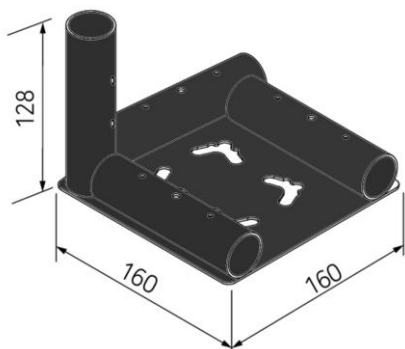
Caster Strap

**MT-5109W**



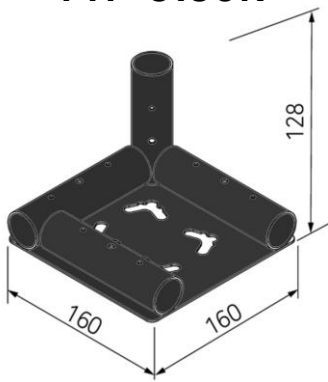
Caster Strap W

**MT-5139L**



Corner Plate Left

**MT-5139R**

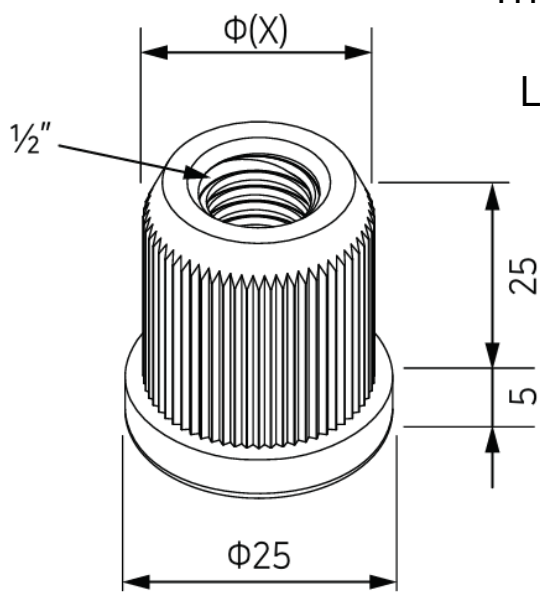


Corner Plate Right

# Insert Nuts

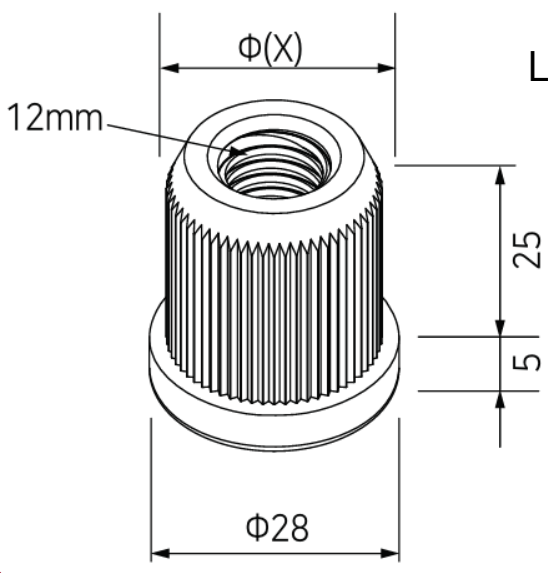
## IN-1210L

Thickness – 1.0/1.1  
Pipe Model  
LP1100/ST-1110



## IN-1211SM

Thickness – 1.0/1.1  
Pipe Model  
LP1100/ST-1110



# Material Surfaces

Work surfaces ranging from the strength and durability of stainless steel or the antistatic properties of the ESD mat, Complete Lean Tube offers a range of materials to suit your needs. For availability contact Complete Lean Tube for options.

Plywood

Stainless  
Steel

ESD Mat

Plastic

MDF

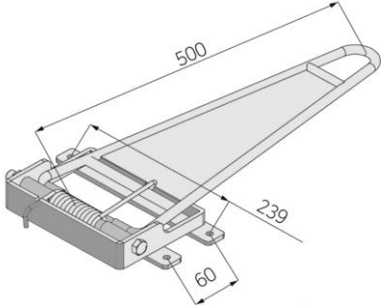
Melamine  
Faced  
Edged



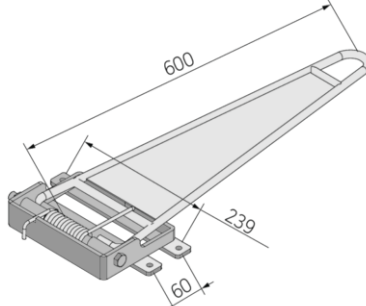


# Tow Hitch

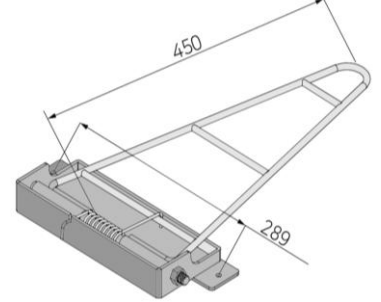
## Traction Arm



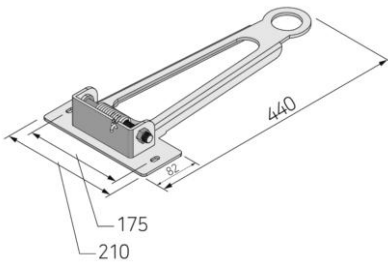
MT-5140A



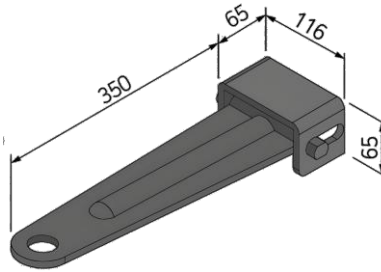
MT-5141A



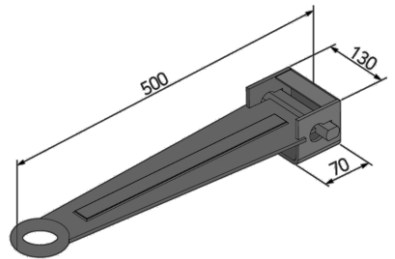
MT-5142B



MT-5149A

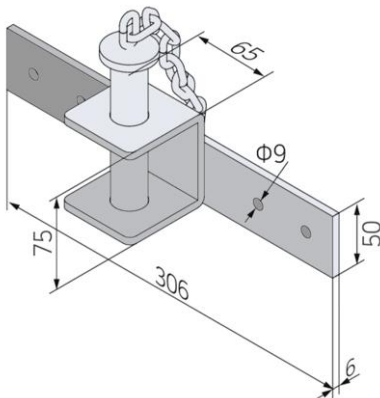


MT-5144B

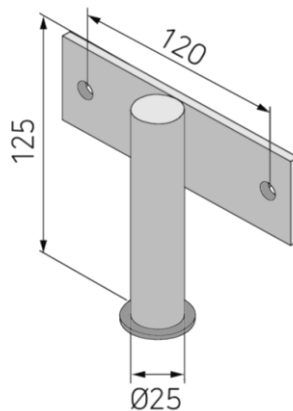


MT-5144C

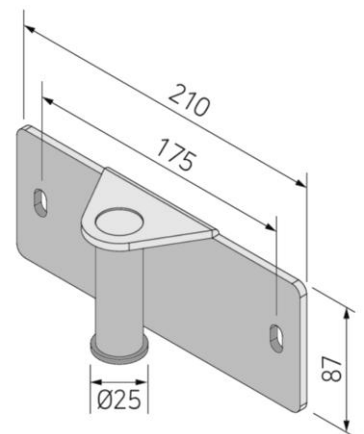
## Traction Hook



MT-5145A



MT-5143A/B



MT-5149B



# Height Adjustable Desks

Three lifting columns are available all compatible with the tube and joint system and can be customised to your specific needs with two elevation methods the Manual Hand Crank and Electric Hand Switch.

Standard Column



Heavy Duty Column



Linear Column



Manual Hand Crank

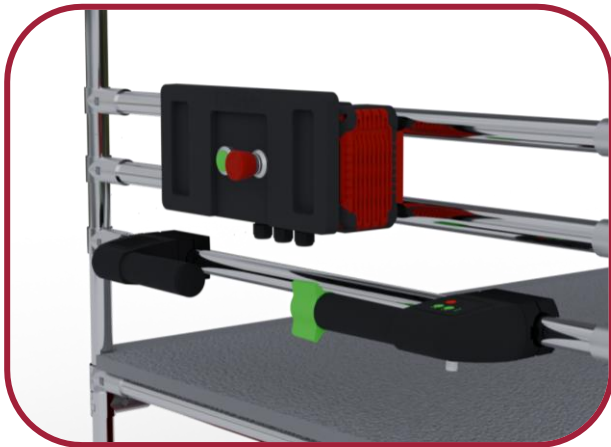
Electric Hand Switch



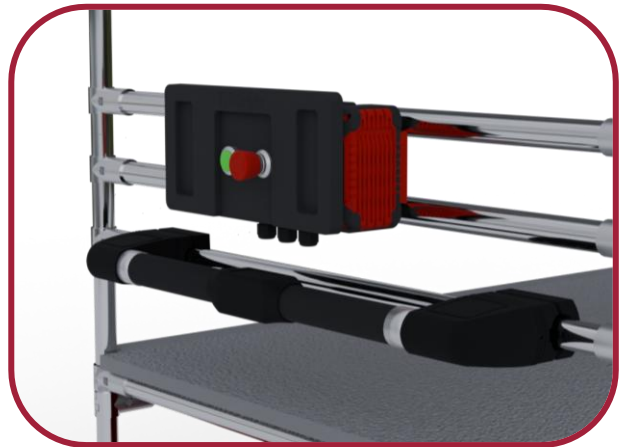
# E-Cart

The E-Cart is part of the E-Range offering two handle options, the EM500-S565U which features sensor handle technology and the EM500-1FG features a rotary joystick.

EM500-1FG

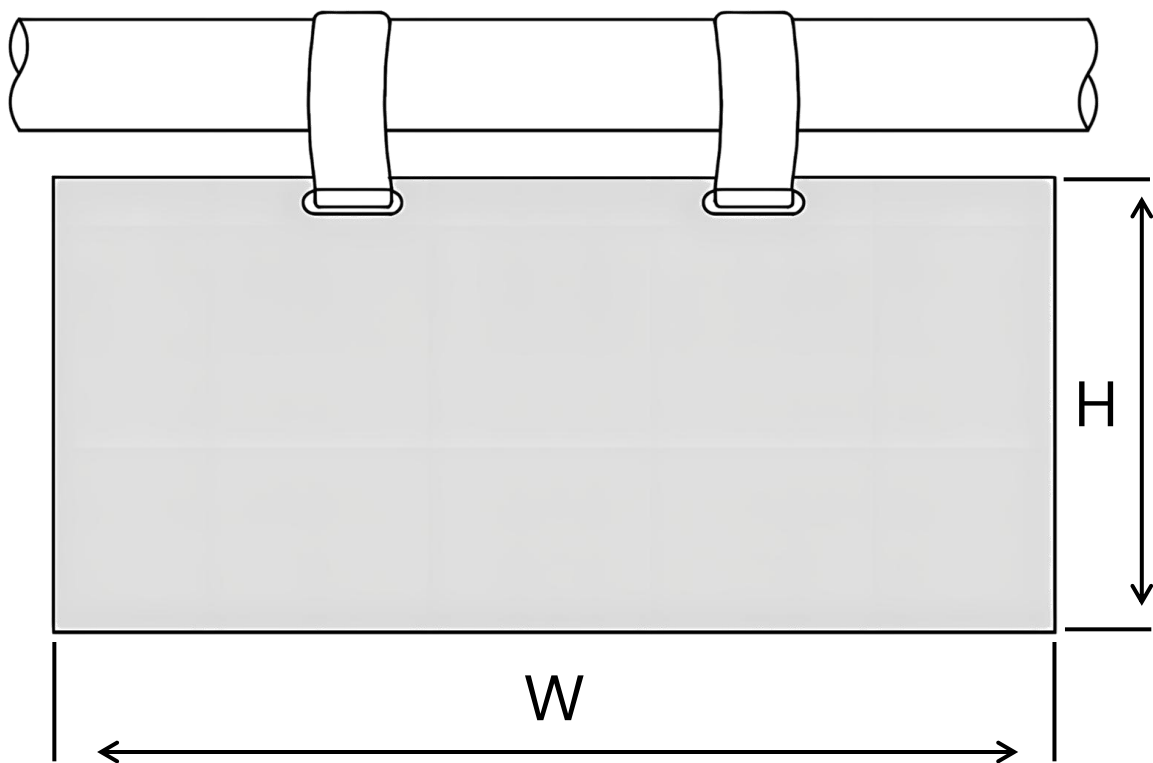


EM500-S565U



# Name Plates

Name plates available in a variety of sizes.

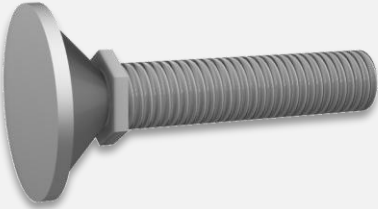


## Sizes

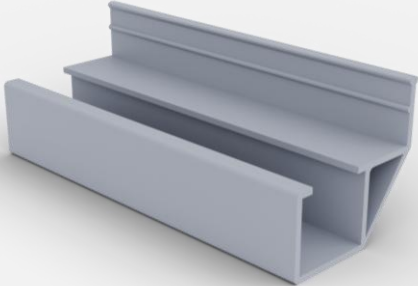
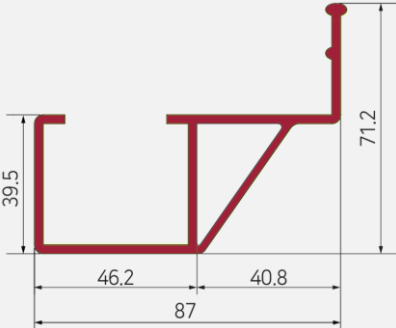
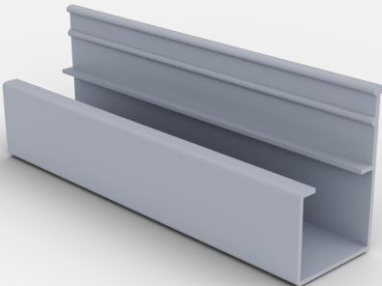
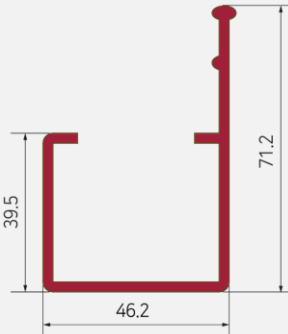
W (mm)	H (mm)
120	40
152	62
180	84
220	100
300	120
215	160
307	225
430	310

# Castors/Feet

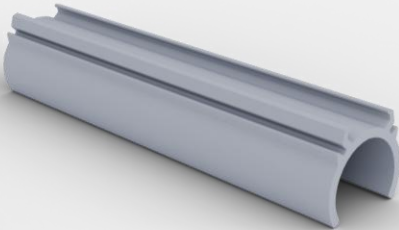
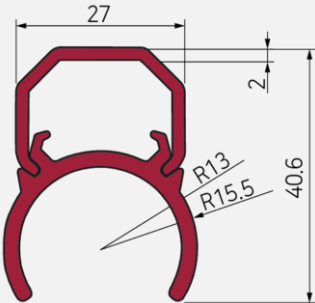
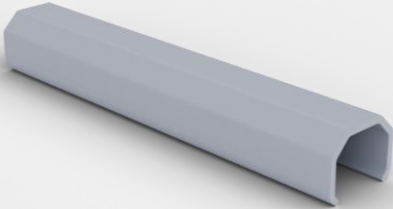
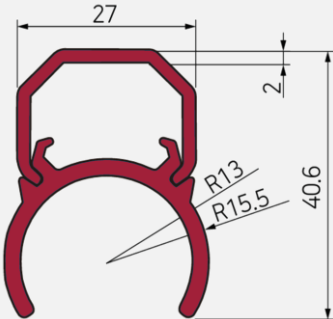
Item Code	Specification	Item Image
CT-703S	75mm Swivel 70kg (Per Castor)	
CT-703B	75mm Brake Swivel 70kg (Per Castor)	
CT-704S	100mm Swivel 80kg (Per Castor)	
CT-704B	100mm Brake Swivel 80kg (Per Castor)	

Item Code	Specification	Item Image
CT-715BH	Castor Plated, 125mm, Brake 200kg (Per Caster)	
CT-715SH	Castor Plated, 125mm, Swivel 200kg (Per Caster)	
CT-715RH	Castor Plated, 125mm, Fixed 200kg (Per Caster)	
AD-5012MSM	Foot Thread size - ½” Diameter - Φ32 Length - 50mm	
AD-3012IRM	Foot (Rubber) Thread Size - M12 Diameter - Φ33 Length --50mm	

# Guide Rails

Item Code	Item Image	Cross-section
Guide Rail Type A		
Guide Rail Type B		

# Cable Duct

Item Code	Item Image	Cross-section
Cable Duct A		
Cable Duct B		

# Fasteners

The lean tube system benefits from its simplicity utilising three main fasteners for system assembly.

Component Code	Component Image	Available Components
Wrench Bolt		M6 10/20/25
Bolt		M8 35/40/45/60/60/70
Nut		T-Nut M6 Nylon Nut M8/M10/M12