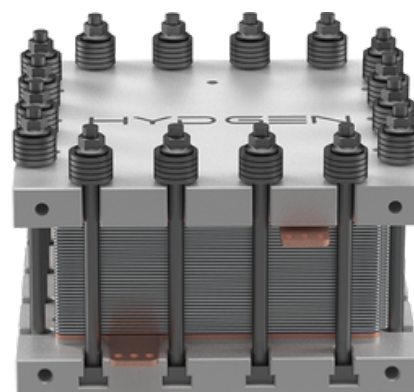


250kW PEM Stack

The HYDGEN 250 kW PEM electrolyzer delivers dependable, mid-to-large-scale hydrogen production of up to 115 kg/day, making it ideal for industrial users with rising hydrogen demand. Engineered for efficiency and durability, this system ensures clean hydrogen is available where and when it's needed, without relying on external supply chains.



Input

| | |
|-------------------------|--|
| Stack Power Consumption | 250kW |
| DC Power Consumption | 4.6 (rated Power) kWh/Nm ³ H ₂ |
| Feed Water Quality | ≤0.1 μS/cm (ISO 3696:1987 Grade1) |
| Water Flow Rate | 1.59 m ³ /h |
| Current Density | 2 A/cm ² |
| Cells | 57 Pcs |
| Rated Current | 2225 A |
| Rated Voltage | 114 V |
| Rated Temperature | 60±5 °C |
| Ambient Temperature | 10-40 °C |

Mechanical Parameters

| | |
|--------------|----------------|
| Size (W×L×H) | 400*600*330 mm |
| Weight | ~400 Kg |

Output

| | |
|----------------------------------|---------------------------------|
| Volume | 50 Nm ³ /h |
| Mass | ~ 114.84 kg H ₂ /day |
| H ₂ Output Pressure | ~10 Barg |
| O ₂ Side Pressure | ~1 Barg |
| O ₂ in H ₂ | ≤0.1 (dry basis) % |
| H ₂ in O ₂ | ≤1 (dry basis) % |
| Purity | 99.97% |

Performance Parameters

| | |
|-------------------|--------------------|
| DC efficiency | 87-89 %HHV |
| Start Up Time | 10s/8min Warm/Cold |
| Response time | 30s |
| Water Consumption | ~25 L/h |
| Power Range | 25~125 % |
| Design Life | 40 000 hours |