

Peace of mind,  
for a lifetime



LIFESPAN<sup>®</sup> SOLID SELECT is a premium solid exterior trim product – offering a superior clean finish, outstanding performance, and the benefits of real wood.

# The advantages are clear

Sourced from New Zealand's renowned radiata pine forests, LIFESPAN® SOLID SELECT is made from only the highest quality, long-length clear boards.

This superior product features an EPA-approved non-metallic preservative that protects against rot, fungal attack and insects (including termites). It also offers superior moisture resistance – with a proprietary water repellent system, and two coats of alkyd primer. This proven protection is backed by a limited lifetime warranty.

Combining outstanding durability with the beauty of real wood, LIFESPAN® SOLID SELECT is the choice for a lifetime.



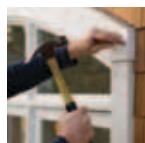
**Limited  
Lifetime  
Warranty**



**Clear grade  
lumber – no  
finger-joints  
or knots**



**Superior durability  
against rot,  
fungal attack  
and insects**



**Resists  
corrosion  
to nails and  
fastenings**



**FSC® Certified –  
environmentally  
responsible**



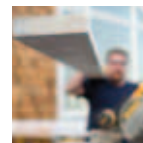
**Superior water  
resistance**



**Long-term  
termite  
protection**



**Real wood –  
a pleasure  
to work with**



**EPA-approved  
non-metallic  
preservative**

# Top 10 FAQs

## 1. What is LIFESPAN SOLID SELECT?

LIFESPAN SOLID SELECT is a range of premium high grade, solid – no fingerjoints, radiata pine products that are preservative treated with an organic biocide system, and are double primed with an alkyd primer so they are ready for top coating.

## 2. Where is LIFESPAN SOLID SELECT manufactured?

LIFESPAN SOLID SELECT is manufactured in New Zealand by Tenon Manufacturing, who is the largest producer of clear pine products in NZ. The raw material for LIFESPAN SOLID SELECT comprises high grade clear lumber produced from pruned radiata pine logs sourced from environmentally certified tree farms.

## 3. What is LOSP treatment?

Unlike traditional dip treatments and newer spray-on treatments that only reach the outside surfaces, LIFESPAN SOLID SELECT is pressure treated. This ensures the biocides penetrate and protect the entire sapwood substrate with precise quantities of preservative. And unlike conventional preservative treatment using waterborne formulations, the LIFESPAN SOLID SELECT active biocides are insoluble in water and are carried into the wood with a mineral spirits carrier. Also included in the formulation are waxes and resins which provide additional water resistance. As part of the treatment process, the bulk of the solvent is recovered, and the majority of that remaining after treatment is flashed off prior to further processing.

## 4. Are the active ingredients in LIFESPAN SOLID SELECT safe?

Yes. The treatment formulation has been approved by the EPA, and the actives in the formulation are non metallic and are also commonly used in food production and household products:

- Tebuconazole and Propiconazole are EPA approved systemic fungicides used widely to control mould and mildew in agricultural and horticultural applications, e.g. wheat, peaches, cherries, bananas.
- Permethrin is an EPA approved insecticide used in products such as fly sprays, head lice shampoos, and to provide insect control on stored fruits and grains.

## 5. What about odor?

The slight odor that may be noticeable is white spirits (a light hydrocarbon) vapour. LIFESPAN SOLID SELECT is primed with two coats of alkyd primer, which has been shown to provide superior water resistance. Some residual solvent from the primer and the treatment may be trapped by the slipsheeting used to protect the surfaces in transport, and released when unwrapped. It dissipates rapidly and remains well below the threshold limit values for long term exposure of 100ppm.

## 6. Will the active chemicals be retained in LIFESPAN SOLID SELECT?

Yes. All the actives in LIFESPAN SOLID SELECT are insoluble in water, and are carried into the wood by the organic solvent

(white spirits). The actives are immobilised when this solvent is removed during manufacture.

## 7. Is LIFESPAN SOLID SELECT an environmentally friendly product?

Yes, LIFESPAN SOLID SELECT is made from FSC® certified wood sourced from New Zealand tree farms. Tenon Manufacturing takes its environmental responsibilities seriously:

- Our wood is sourced from sustainable tree farms, grown close to the manufacturing plant, which minimises transport.
- Lumber is dried in our sawmill with heat provided by geothermal energy - a clean, renewable resource, avoiding the use of fossil fuels.
- Our manufacturing byproducts (e.g bark, sawdust and shavings) are sold for other uses, such as particleboard, mulch or as an energy source. As a result of this and developing alternative uses, we have been able to reduce waste to landfill by over 90%.

The proven durability of LIFESPAN SOLID SELECT, together with its environmental credentials, make it a leading choice for exterior applications instead of alternatives such as plastics and composites.

## 8. What makes LIFESPAN SOLID SELECT stability and paint performance superior?

LIFESPAN SOLID SELECT stability is enhanced by three factors:

- The high grade C & Better Lumber used comes from the outside of pruned (butt) logs and has low tendency for movement/distortion.
- The preservative treatment contains waxes and resins, which act as a water repellent reducing water uptake.
- The two-coat PPG alkyd primer system, applied to all 4 sides and ends, has high water resistance.

Together these factors result in increased stability, which means less cracking and peeling of top coats in service.

## 9. Does LIFESPAN SOLID SELECT comply with AWP requirements for the UC3A use class (above ground exterior use)?

Yes. LIFESPAN SOLID SELECT is produced in accordance with New Zealand and Australian standards (NZS3640, AS1604.1:H3) which exceed AWP requirements for preservative retention for UC3A use class.

## 10. Do I have to end seal and prime LIFESPAN SOLID SELECT boards?

No. LIFESPAN SOLID SELECT boards of 1" nominal thickness do not require any site treatment of cut ends with a preservative, or priming. However for thicker product, a brush on or spray preservative should be liberally applied to any cut surfaces, notches, or bore holes. In order to maximise long term appearance, as good building practice, it is recommended to coat exposed ends and mitres with a good quality exterior primer before final painting.



## LIMITED LIFETIME WARRANTY AGAINST FUNGAL DECAY AND INSECT ATTACK

The LIFESPAN SOLID SELECT range of treated wood products is supported by a limited lifetime warranty for protection against fungal decay and insect attack. Where any LIFESPAN SOLID SELECT product used in the appropriate application becomes structurally or functionally unserviceable during the lifetime of the original consumer purchaser due to fungal decay or insect attack, then replacement of the material will be provided by the manufacturer. This Warranty is limited to the original consumer purchaser or "first owners".

The manufacturer's liability under this Warranty is limited to the replacement cost of the defective LIFESPAN SOLID SELECT product only. It does not include any other costs including freight, labor costs, finishing costs, consequential damages, incidental damages, or special damages arising directly or indirectly from the LIFESPAN SOLID SELECT product, however caused.

To be covered under the limited lifetime Warranty, the "first owner" must be the recorded or documented owner of the property at the time or within 12 months of the time the LIFESPAN wood product is installed by the builder or contractor. In all other circumstances the limited lifetime LIFESPAN SOLID SELECT Warranty is not transferable to subsequent owners of the property.

In order to claim on this Warranty, the "first owners" must provide, at the time of claim, proof of purchase. This is necessary so that Fletcher Wood Solutions can properly identify the product as a LIFESPAN SOLID SELECT product. This could include original invoices or sales receipts, or any LIFESPAN SOLID SELECT end tags. Fletcher Wood Solutions may require, as a condition of meeting any warranty

claim, to inspect the relevant installation. In addition to satisfying all other conditions, limitations, and requirements referenced in this Warranty, any claims under this Warranty are specifically excluded unless the following specific terms and conditions are also satisfied:

- Compliance with all applicable Building Codes and Standards
- Compliance with the appropriate Hazard Class or Use Category (UC3A and UC3B). See "Where You Can Use LIFESPAN SOLID SELECT" under the "Handling and Installation" section on page 10.
- Handling and installation requirements. See the "Handling and Installation" requirements section on page 10.
- The LIFESPAN SOLID SELECT must have been well maintained in service in accordance with standard building recommendations and practices.

Except for the foregoing, and to the maximum extent permitted by law, Tenon makes no other warranties, representations, or conditions, expressed or implied, as to or concerning LIFESPAN SOLID SELECT including claims and complaints relating to priming, painting, resin bleed, environmental, or health and safety issues and any and all other representations, warranties, terms and conditions implied by any laws are excluded.

Fletcher Wood Solutions makes no claim that LIFESPAN SOLID SELECT will protect non-LIFESPAN products from insects, rot or fungi. For further information regarding the terms and conditions, please contact your LIFESPAN SOLID SELECT supplier.

**-FLETCHER-**  
**WOOD SOLUTIONS**

**Fletcher Wood Solutions®**  
dba Taupo Wood Solutions  
99 Monroe Ave NW, Suite 601  
Grand Rapids MI 49503  
1-866-FSC-WOOD [www.lifespanoutdoor.com](http://www.lifespanoutdoor.com)



Distributor