



PRODUCT LINE

AUSTRALIA



TOUGH WORLD. TOUGH EQUIPMENT.

A POWERFUL HERITAGE

For over 65 years, LiuGong has built a reputation for designing and building a tough range of machines that help customers do more and earn more.

Today, the range includes more than 30 different product lines covering all major construction application. Tough and nimble, intelligent and adaptable, the worldclass design always has, and always will, put customers in control.

Customer insight has inspired engineering and manufacturing to deliver machines which are tougher and more reliable, easier to control, and are at the forefront of intelligent technology.

A POWERFUL PARTNER

LiuGong Australia delivers high customer satisfaction with our uncomplicated machinery and fast, reliable service.

As one of the world's leading heavy equipment suppliers, LiuGong are backed by an extensive experienced and support network, with reliable machines and attachments to get the toughest jobs done right.

Perfect for Australia's tough conditions, and with world-class partners like ZF and Cummins, LiuGong equipment reduces costs, increases productivity and maximises profits.

PRODUCT LINE



Wheel Loaders



Excavators



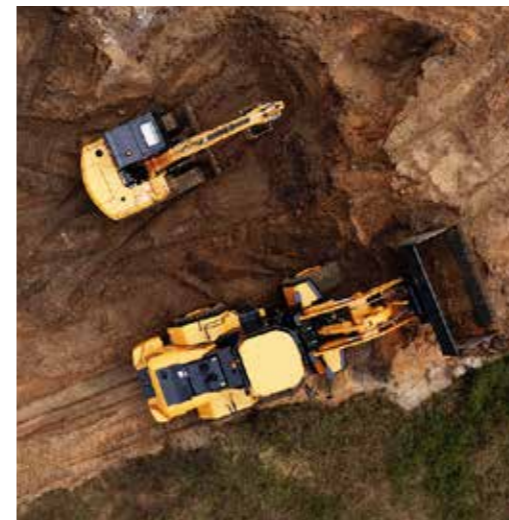
Motor Graders



Rollers



Skid Steers



Customer Orientated:

- iLink
- Low maintenance
- Extended Warranty



Ever-evolving training:

- Dealer development
- Local R&D
- Online resources

AFTER-MARKET FOCUS



Local parts support:

- Fast-moving parts located where they're needed
- AU depots of parts holdings



Trusted service centres:

- Strategically located dealers to ensure service is available when needed

1958: LiuGong was founded.

1958

1966: Manufactured China's first wheel loader.

1968

1993: Listed on the Shenzhen Stock Exchange

1992

1995: Started first international joint venture, joining with ZF to produce transmission cases

1999

2000: The start of rapid product line expansion, ensuring a full lineup of machines by 2011

2004: Began developing global markets, entered Australia with McIntosh Distributor

2012

2015: New Global research & development centre opened in Liuzhou.

2019: Launched the world's first 5G-based intelligent remote control wheel loader and large battery electric vehicles (BEVs)

TOUGH WORLD. TOUGH EQUIPMENT.

EARTHMOVING MACHINERY



WHEEL LOADERS



862H

ENGINE:	Cummins
GROSS POWER:	241 hp @ 2,200 RPM
BASE OP WEIGHT:	21,500 kg
BUCKET SIZE:	4.2m ³



8128H

ENGINE:	Cummins
GROSS POWER:	562 hp @ 2,200 RPM
BASE OP WEIGHT:	52,100 kg
BUCKET SIZE:	7.0m ³



T SERIES



820T

ENGINE:	Yanmar
GROSS POWER:	73 hp @ 2,000 RPM
BASE OP WEIGHT:	6,800 kg
BUCKET SIZE:	1.5 m ³



838T

ENGINE:	Cummins
GROSS POWER:	152 hp @ 2,200 RPM
BASE OP WEIGHT:	13,000 kg
BUCKET SIZE:	2.3m ³



848T

ENGINE:	Cummins
GROSS POWER:	178 hp @ 2,200 RPM
BASE OP WEIGHT:	16,450 kg
BUCKET SIZE:	3.0m ³



856T

ENGINE:	Cummins
GROSS POWER:	228 hp @ 2,000 RPM
BASE OP WEIGHT:	19,830 kg
BUCKET SIZE:	3.5m ³



870T

ENGINE:	Cummins
GROSS POWER:	281 hp @ 2,100 RPM
BASE OP WEIGHT:	23,800 kg
BUCKET SIZE:	4.2m ³



886T

ENGINE:	Cummins
GROSS POWER:	322 hp @ 2,000 RPM
BASE OP WEIGHT:	26,800 kg
BUCKET SIZE:	4.5m ³



890T

ENGINE:	Cummins
GROSS POWER:	350 hp @ 2,100 RPM
BASE OP WEIGHT:	33,000 kg
BUCKET SIZE:	6.2m ³



PRODUCT LINE AND SPECIFICATIONS ARE SUBJECT TO CHANGE WITHOUT NOTICE



MINI EXCAVATORS



TRUE ZERO TAIL SWING

9017F ZTS

ENGINE: Kubota
NET POWER: 15.8 hp @ 2,300 RPM
BASE OP WEIGHT: 1,750 kg



9027F ZTS

ENGINE: Yanmar
NET POWER: 20.4 hp @ 2,200 RPM
BASE OP WEIGHT: 2,680 kg



9035F ZTS

ENGINE: Yanmar
NET POWER: 23.2 hp
BASE OP WEIGHT: 3,800 kg



9057F ZTS

ENGINE: Yanmar
NET POWER: 48 hp @ 2,200 RPM
BASE OP WEIGHT: 5,570 kg



EXCAVATORS



COMPACT RADIUS

909E CR

ENGINE: Yanmar
NET POWER: 59 hp @ 2,200 RPM
BASE OP WEIGHT: 8,700 kg



913F CR

ENGINE: Cummins
NET POWER: 93.2 hp @ 2,200 rpm
BASE OP WEIGHT: 14,700 kg



915E

ENGINE: Cummins
NET POWER: 108 hp @ 2,200 RPM
BASE OP WEIGHT: 14,950 kg



COMPACT RADIUS

915F CR

ENGINE: Cummins Tier 4
NET POWER: 120 hp @ 2,200 RPM
BASE OP WEIGHT: 16,600 kg



W915E

ENGINE: Cummins
RATED POWER: 130 hp @ 2,200 RPM
BASE OP WEIGHT: 15,600 kg



922F

ENGINE: Cummins
NET POWER: 147 hp @ 2,200 RPM
BASE OP WEIGHT: 22,800 kg



933F

ENGINE: Cummins
NET POWER: 219 hp @ 2,000 RPM
BASE OP WEIGHT: 34,300 kg



936F

ENGINE: Cummins
NET POWER: 298 hp @ 2,100 RPM
BASE OP WEIGHT: 38,800 kg



939F

ENGINE: CN III QSL
RATED POWER: 286 hp
BASE OP WEIGHT: 39,000 kg



EXCAVATORS CONT.



952E
ENGINE: Cummins
NET POWER: 260 hp @ 2,000 RPM
BASE OP WEIGHT: 51,000 kg



975F
ENGINE: Cummins
NET POWER: 755 hp @ 2,100 RPM
BASE OP WEIGHT: 78,500 kg



990F
ENGINE: Perkins
NET POWER: 582 hp @ 1,800 RPM
BASE OP WEIGHT: 95,000 kg



9125F
ENGINE: Cummins
NET POWER: 760 hp @ 1,800 RPM
BASE OP WEIGHT: 122,000 kg



WASTE & RECYCLING



ELECTRIC
924FE
BASE OP WEIGHT: 24,900 kg
BATTERY CAPACITY: 423 kwh
BATTERY ENDURANCE: 6-8 Hours
REACH: 10-11 m



924F
ENGINE: Cummins
RATED POWER: 167 hp @ 2050 rpm
BASE OP WEIGHT: 24,900 kg
REACH: 10-11 m



943EMH
ENGINE: Cummins
RATED POWER: 226 hp @ 2050 rpm
BASE OP WEIGHT: 43,500 kg
REACH: 15 m

ROLLERS



VIBRATING
6027F
ENGINE: Kubota
NET POWER: 35 hp @ 2,800 RPM
BASE OP WEIGHT: 2,700 kg
WIDTH: 1,200 mm



VIBRATING
6032E
ENGINE: Perkins
NET POWER: 36 hp @ 2,600 RPM
BASE OP WEIGHT: 3,360 kg
WIDTH: 1,200 mm



MULTI-TYRE
6524E
ENGINE: Cummins
NET POWER: 132 hp @ 2,200 RPM
BASE OP WEIGHT: 24,000 kg
WIDTH: 2,250 mm



VIBRATING
6608F
ENGINE: Cummins
NET POWER: 99 hp @ 2,200 RPM
BASE OP WEIGHT: 7,500 kg
WIDTH: 1,680 mm



VIBRATING
6613E
ENGINE: Cummins
NET POWER: 160 hp @ 2,200 RPM
BASE OP WEIGHT: 13,200 kg
WIDTH: 2,130 mm



VIBRATING
6615E
ENGINE: Cummins
NET POWER: 160 hp @ 2,200 RPM
BASE OP WEIGHT: 15,000 kg
WIDTH: 2,130 mm





SKID STEER LOADERS



335C

ENGINE:	Kubota
RATED POWER:	24.8 hp
BASE OP WEIGHT:	1,440 kg
OPERATING CAPACITY:	360 kg
TIPPING LOAD:	760 kg
BUCKET BREAKOUT FORCE:	8.15 kN
DUMP CLEARANCE:	1,877 mm



365B

ENGINE:	Perkins
RATED POWER:	48 hp
BASE OP WEIGHT:	2,950 kg
OPERATING CAPACITY:	795 kg
TIPPING LOAD:	1,590 kg
BUCKET BREAKOUT FORCE:	20.4 kN
DUMP CLEARANCE:	2,220 mm



375B

ENGINE:	Yanmar
RATED POWER:	67 hp
BASE OP WEIGHT:	3,100 kg
OPERATING CAPACITY:	865 kg
TIPPING LOAD:	1,730 kg
BUCKET BREAKOUT FORCE:	20.4 kN
DUMP CLEARANCE:	2,220 mm



378C

ENGINE:	Yanmar
RATED POWER:	72 hp
BASE OP WEIGHT:	4,200 kg
OPERATING CAPACITY:	998 kg
TIPPING LOAD:	2,850 kg
BUCKET BREAKOUT FORCE:	25 kN
DUMP CLEARANCE:	2,580 mm



385B

ENGINE:	Yanmar
RATED POWER:	82 hp
BASE OP WEIGHT:	3,750 kg
OPERATING CAPACITY:	1,045 kg
TIPPING LOAD:	2,090 kg
BUCKET BREAKOUT FORCE:	29.8 kN
DUMP CLEARANCE:	2,572 mm



395B

ENGINE:	Perkins
RATED POWER:	94 hp
BASE OP WEIGHT:	3,850 kg
OPERATING CAPACITY:	1,133 kg
TIPPING LOAD:	2,267 kg
BUCKET BREAKOUT FORCE:	32.2 kN
DUMP CLEARANCE:	2,572 mm

MOTOR GRADERS



4180D

ENGINE:	Cummins
RATED POWER:	183 hp @ 2,200 RPM
BASE OP WEIGHT:	15,500 kg
BLADE WIDTH:	3,960 mm



4230D

ENGINE:	Cummins
RATED POWER:	240 hp @ 2,200 RPM
BASE OP WEIGHT:	18,000 kg
BLADE WIDTH:	4,270 mm



4260D

ENGINE:	Cummins
RATED POWER:	260 hp @ 2,200 RPM
BASE OP WEIGHT:	20,500 kg
BLADE WIDTH:	4,270 mm

DOZERS



LD20D

ENGINE:	Cummins
GROSS POWER:	206 hp @ 2,000 RPM
BASE OP WEIGHT:	20,000 kg
BLADE SIZE:	11.8 m³



LD26

ENGINE:	Cummins
GROSS POWER:	272 hp @ 2,000 RPM
BASE OP WEIGHT:	24,000 kg
BLADE SIZE:	7.8 m³



LD36D

ENGINE:	Cummins
GROSS POWER:	375 hp @ 2,000 RPM
BASE OP WEIGHT:	40,000 kg
BLADE SIZE:	11.7 m³

MATERIAL HANDLING



2030H

ENGINE:	Yanmar
GROSS POWER:	3.3L 43KW
BASE OP WEIGHT:	3,000 kg
FORK LENGTH:	1,070 mm



2030H-R

ENGINE:	Yanmar
GROSS POWER:	3.3L 43KW
BASE OP WEIGHT:	3,000 kg
FORK LENGTH:	1,220 mm



2035H-R

ENGINE:	Yanmar
GROSS POWER:	3.3L 43KW
BASE OP WEIGHT:	3,500 kg
FORK LENGTH:	1,220 mm



ZERO EMISSIONS
INFINITE POSSIBILITIES

BATTERY ELECTRIC
HEAVY MACHINERY



LEADING IN BATTERY ELECTRIC VEHICLE TECHNOLOGY



A WORLD LEADING BEV RANGE

LiuGong were one of the first construction equipment manufacturers to identify the potential of battery electric vehicles in the construction and civil industry.

With over 12+ million combined hours already operating in the toughest conditions, you can have peace of mind that you're making the right choice.

GUARANTEED RELIABILITY

**5^{YEAR} 10,000
HOURS WARRANTY**

This guarantee underlines the confidence we have in our electric machines, born out of real-life controller experience in tough, commercial job sites.



REDUCE YOUR COST OF OWNERSHIP WITH BEV



up to
70% reduction
in operating costs over 5 years



up to
50% reduction
in maintenance costs over 5 years

IN THE FIELD

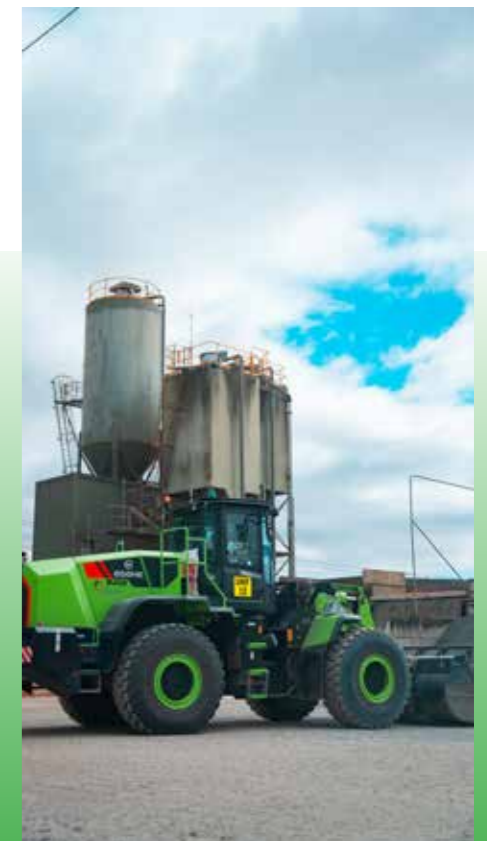
Increased operator comfort with substantial noise & heat reductions

Improved operational performance from machinery cycle times, 1-hour fast charging is available for continuous operations **Charging times are based on batteries being fully depleted at shift change, which is typically not the case.*

Environmental benefits with reduced CO² emissions

Increased up-time with less frequent servicing intervals required

Intelligent real-time telemetry allows for remote support and reduced down-times





WHEEL LOADERS



820TE

BATTERY CAPACITY:	70.5 kwh
BASE OP WEIGHT:	6,600 kg
FULL TURN TIP LOAD (KG):	3,650 kg
BUCKET SIZE:	0.8 - 2.0 m³



838TE

BATTERY CAPACITY:	193 kwh
BASE OP WEIGHT:	12,760 kg
FULL TURN TIP LOAD (KG):	9,600 kg
BUCKET SIZE:	1.5 - 3.0m³



848TE

BATTERY CAPACITY:	282 kwh
BASE OP WEIGHT:	18,000 kg
FULL TURN TIP LOAD (KG):	11,600 kg
BUCKET SIZE:	2.5 - 4.0 m³



856HE

BATTERY CAPACITY:	423 kwh
BASE OP WEIGHT:	20,611 kg
FULL TURN TIP LOAD (KG):	22,280 kg
BUCKET SIZE:	3.5 m³



870HE

BATTERY CAPACITY:	423 kwh
BASE OP WEIGHT:	24,640 kg
FULL TURN TIP LOAD (KG):	16,800 kg
BUCKET SIZE:	3.0 - 7.0 m³



8110TE

BATTERY CAPACITY:	706 kwh
BASE OP WEIGHT:	35,300kg
BUCKET SIZE:	6.2 m³



8128TE

BATTERY CAPACITY:	1070 kwh
-------------------	----------



EXCAVATORS



9027FE

BATTERY CAPACITY:	20.6 kwh
BASE OP WEIGHT:	2,750 kg
BUCKET CAPACITY:	0.08 m³



906FE

BATTERY CAPACITY:	103.5 kwh
BASE OP WEIGHT:	6,160 kg
BUCKET CAPACITY:	0.21 m³



924FE

BATTERY CAPACITY:	423 kwh
BASE OP WEIGHT:	24,100 kg
BUCKET CAPACITY:	1.0 m³



939FE

BATTERY CAPACITY:	Cable
BASE OP WEIGHT:	39,000 kg
BUCKET CAPACITY:	2.0 m³



956FE

BATTERY CAPACITY:	Cable/423
BASE OP WEIGHT:	54, 000 kg
BUCKET CAPACITY:	3.2 m³

SKID STEERS

GRADERS

ROLLERS

TRUCKS



385BE

BATTERY CAPACITY:	101 kwh
RATED VOLTAGE:	347.76 V
BUCKET BREAKOUT FORCE:	36 kN
BOOM BREAKOUT FORCE:	29 kN
RATED LOAD:	1,500 kg
BUCKET CAPACITY:	0.5 m³
BASE OP WEIGHT:	4,820 kg



4280DE

BATTERY CAPACITY:	423 kwh
BASE OP WEIGHT:	24,000 kg
BLADE WIDTH:	4,270 mm
TRACTION FORCE:	134 kN



6626FE

BATTERY CAPACITY:	466 kwh
-------------------	---------



DA45CE

BATTERY:	763 kwh
----------	---------

MANUFACTURING THE FUTURE

LEADING WITH R&D

A 110,000 m² state-of-the-art international R&D center in Liuzhou includes a world class testing center and an industrial design studio, all led by an international team of industry experts.

LiuGong's research & development plant > v



CHANGE FOR BETTER RETURN ON INVESTMENT

DIESEL VS ELECTRIC?

This is the big question. In a straight cost-per-ton comparison, changing to electric makes sense on the job site and on the balance sheet.

30-40% of diesel use is idle time; Battery electric equipment stops energy draw 30 seconds after inactivity, reducing excess usage.



**ENERGY EFFICIENT
INTELLIGENT COOLING**



LOWER YOUR COST OF OWNERSHIP

- Fewer parts
 - Maintenance-free battery
 - Maintenance-free motor
 - Long life hydraulic oil
- GREATER ECONOMY**



Distributed in Australia by McIntosh Distribution
mcintoshdistribution.com.au



EDITION 2.0