




UNMATCHED DURABILITY
& ALL-WEATHER PERFORMANCE



Proal's High Pressure Laminate offers durable and stylish solutions for exterior cladding projects.

Featuring

ABET LAMINATI



X

E

D

N

I

WHY HPL.....	PAGE 4
PROJECTS.....	PAGE 5
TECHNICAL DRAWINGS.....	PAGE 62



WHY HPL FOR EXTERIOR CLADDING

WEATHER RESISTANCE

HPL excels outdoors, resisting rain, UV rays, and temperature changes, ensuring durability and aesthetics.

LOW MAINTENANCE

Easy cleaning and minimal upkeep, plus stain resistance, suits busy urban areas for practicality and cleanliness.

DURABILITY

HPL's durability and resistance make it a long-lasting option, offering protection against wear and tear.

EASE OF INSTALLATION

Lightweight HPL eases handling and installation, saving time and costs for a swift installation process in construction.



HARMONIZED WOOD AND STONE ARCHITECTURE

LOCATION

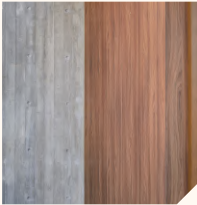
LEDARON

YEAR

2023

INDUSTRY

RESIDENTIAL











A photograph of a row of modern, multi-story villas. The buildings feature a mix of light-colored stone or concrete cladding and vertical wood paneling. They have flat roofs with dark metal railings. The sky is a clear, pale blue. The text 'WOOD-FINISHED EXTERIOR FOR VILLA COMPLEX' is overlaid in large, white, sans-serif capital letters.

WOOD-FINISHED EXTERIOR FOR VILLA COMPLEX

LOCATION

KSA

YEAR

2023

INDUSTRY

RESIDENTIAL





The image shows a close-up, low-angle view of a modern building's exterior. The facade is composed of two main materials: light-colored, textured natural stone on the left and bottom, and vertical, dark-stained wood slats on the right and top. The wood slats are closely spaced and run vertically, creating a rhythmic pattern. A large, white, sans-serif title is overlaid on the center of the image. In the bottom left corner, there are three columns of smaller text, each preceded by a vertical line. The sky in the background is a pale, overcast grey.

NATURAL STONE MEETS SLEEK WOOD

| LOCATION

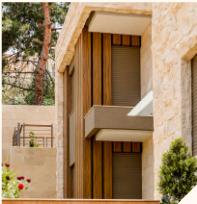
LEGANON

| YEAR

2023

| INDUSTRY

RESIDENTIAL











LEBANESE VILLA WITH WOOD EXTERIOR

LOCATION

KOUSBA, LEBANON

YEAR

2023

INDUSTRY

RESIDENTIAL











LOUVRES AND HPL IN PERFECT BALANCE

LOCATION

LEBANON

YEAR

2020

INDUSTRY

RESIDENTIAL





A photograph of a modern, multi-story residential building with a light-colored, textured facade. The building features large, cantilevered balconies with dark metal railings and some greenery. The sky is blue with light clouds. The text 'ELEVATED ELEGANCE' is overlaid in large, white, sans-serif capital letters on the left side of the image.

ELEVATED ELEGANCE

| LOCATION
LEBANON

| YEAR
2020

| INDUSTRY
RESIDENTIAL



IN THE MOUNTAINS OF FAQRA

LOCATION

LEBANESE

YEAR

2020

INDUSTRY

RESIDENCE







UPGRADED MOUNT LEBANON HOSPITAL

| LOCATION
LEBANON

| YEAR
2020

| INDUSTRY
HOSPITAL



A photograph of a modern building facade with a grey, geometric, and angular cladding system. Teal-colored vertical and diagonal lines are integrated into the design. Large glass windows are visible on the left and right sides. The building is set against a clear blue sky with some green trees in the foreground.

MODERN COFFEE SPACE CLADDING

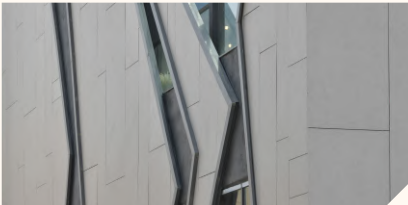
LOCATION
KSA

YEAR
2023

INDUSTRY
RESTAURANT









A photograph of a modern, multi-story residential building with a white facade and large glass windows. The building is situated on a hillside, with a swimming pool in the foreground and palm trees in the background. The sky is clear and blue.

TIMELESS COASTAL CHARM AT MAREA

LOCATION
BATROUN, LEBANON

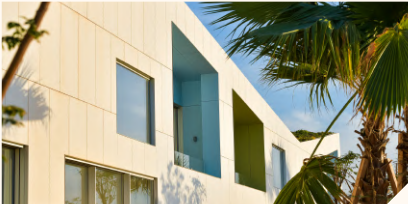
YEAR
2021

INDUSTRY
RESIDENTIAL











A modern, single-story house with a prominent cantilevered roof supported by thick concrete pillars. The exterior features a mix of materials: light-colored horizontal stone or concrete panels, dark wood vertical slats, and large glass windows. A swimming pool is visible in the foreground. The background shows a rocky hillside with some traditional buildings.

BEAUTY OF HPL AND NATURE

LOCATION

LEBANON

YEAR

2022

INDUSTRY

RESIDENTIAL









A modern, multi-story residential building with a dark, angular facade and large glass windows. The building features a combination of dark wood and black architectural elements. It is set against a clear blue sky, with some bare tree branches visible in the foreground and a hillside in the background.

HARMONIZED WOOD AND BLACK ARCHITECTURE

LOCATION
LEONARDO

YEAR
2024

INDUSTRY
RESIDENTIAL





A photograph of a modern building facade featuring horizontal wood cladding. The building has several dark, rectangular window openings. In the foreground, there is a balcony with a glass railing and some potted plants, including a large green bush and a small tree with yellow leaves. The overall scene is brightly lit, suggesting a sunny day.

LONG-LASTING AND WEATHER-RESISTANT CLADDING

LOCATION

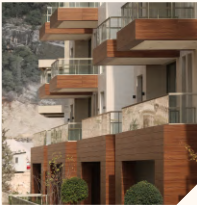
SEATTLE

YEAR

2018

INDUSTRY

RESIDENTIAL









MODERN VILLA CLADDING

LOCATION
LEDANON

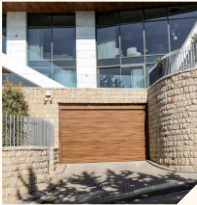
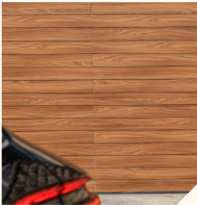
YEAR
2023

INDUSTRY
RESIDENTIAL







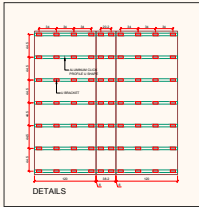
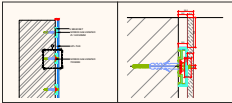




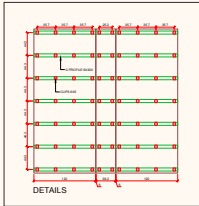


TECHNICAL DRAWINGS

CLICK SYSTEM



G PROFILE





www.proal.me