

**VICTORIA'S**  
**BIG BUILD**

# Discovering Big Build Careers

**Session for Careers  
Practitioners and Teachers**

**17 February 2026**





## Acknowledgement of Country

I acknowledge the Traditional Owners of the land on which I live and learn today, the Wadawurrung people of the Kulin Nation, and pay my respects to Elders past and present.

As someone who has made a home here, I am grateful to be welcomed onto this Country. I recognise that my life and experiences on this land are only possible because of the enduring care, knowledge, and connection that First Nations peoples have maintained with Country for tens of thousands of years.

# Agenda

- **What is Victoria's Big Build?**
- **Future Projects and Opportunities**
- **Our work at Victoria's Big Build**
- **Job Roles Activity**
- **Break**
- **Hear from Industry Experts**
- **Event Concludes**
- **Informal Networking**



# What is Victoria's Big Build?

Victoria's Big Build (VBB) is a massive infrastructure program aimed at transforming transport and community infrastructure across all of Victoria.

VBB includes over 180 major projects across all of Victoria including Rail infrastructure, Road Upgrades and Health Infrastructure.

The most notable projects include:

- Level Crossing Removal Project
- Metro Tunnel
- Major Health Infrastructure such as New Footscray Hospital & Melton Hospital
- Suburban Rail Loop (SRL)
- West Gate Tunnel

Projects are expected to span up until 2050, creating and supporting 50,000 direct and indirect jobs which will continue to grow.

An aerial photograph of a large-scale construction and industrial site in Victoria, British Columbia. The foreground and middle ground are dominated by a massive concrete structure under construction, likely a bridge or a large industrial facility, with numerous construction vehicles and materials scattered around. To the right, a large body of water is visible, with several large red gantry cranes and other industrial structures. In the background, the city skyline of Victoria is visible, featuring numerous high-rise buildings. The sky is clear and blue. The text "SPRINGING AHEAD ON VICTORIA'S BIG BUILD" is overlaid in the center of the image in a bold, white, sans-serif font. Two teal-colored L-shaped corner brackets are positioned on the left and right sides of the text, framing it.

**SPRINGING AHEAD ON  
VICTORIA'S BIG BUILD**

# Did you know?

- The rail industry generates almost \$30 billion in economic activity each year and supports 165,000 direct and indirect Australian jobs.
- Since 2020 Government roads projects have used over 4.1 million tonnes of recycled and reused materials across 41 projects
- Footscray Hospital is one of the state's largest ever health infrastructure projects



# Victoria's Big Build



North East Link >



Regional Rail Revival >



Suburban Rail Loop >



West Gate Tunnel Project >



Big Build Roads >



Big Build Rail >



Level Crossing Removal Project >



Metro Tunnel Project >



# Local projects



## Barwon Heads Road Upgrade Stage 2

New lanes added, new traffic lights, upgraded intersections and new shared user paths



## Barwon Women's and Children's

New health facility operated by Barwon Health in the University Hospital precinct





We started main construction works

# Upcoming Sunshine Superhub



**Works spanning 6km**  
between West Footscray and Albion



**Realigned passenger**  
and freight rail lines



**Enabling more than 40 trains**  
through Sunshine per hour

Major changes to the rail network around Sunshine Station will enable a rail line to the airport and pave the way for electrification to Melton, by creating a Sunshine Superhub

**Timeline now – End 2030**

## Activity Time:

### Can you match the organisation to the project?

Project/Activity	Organisation
Operates regional passenger trains and buses	V/Line
Operates light rail within Melbourne	Yarra Trams
Land and infrastructure ownership	VicTrack
Removes level crossings	Level Crossing Removal Project
Operates metropolitan train services within the Melbourne network	Metro Trains Melbourne
New transport and planning project	Suburban Rail Loop
Upcoming project to commence 2026	Sunshine Superhub
6.5km tunnels linking Melbourne's freeway	North East Link
What recent healthcare project costs \$1.5b and provides more than 500 beds opens February 2026	New Footscray Hospital



SUBURBAN  
RAIL LOOP

**MEET THE WOMEN BRINGING  
SRL TO LIFE**

# Opportunities we offer to empower future rail leaders

## *Skills in Demand*

The rail industry is experiencing critical skills shortages. It has an aging workforce, with 18.5% of employees reaching retirement age (ages 56-66).

The industry will need to attract a new and diverse workforce.

89.7 per cent of rail sector employers reported experiencing a skills shortage in the previous 12 months. The occupations reported as being in greatest shortage were:



**Train Drivers**



**Educators**



**Signalling  
Technicians**



**Train Controllers**



**Track Workers**





# Opportunities we offer to empower future construction leaders

## *Skills in Demand*

The construction industry is also experiencing critical skills shortages, yet the projected employment growth by May 2035 goes up from 1.35M to 1.51M.

The industry will need to attract a new and diverse workforce to continue with ongoing roads and infrastructure projects

The occupations reported as being in short supply were:



**Electricians**



**Carpenters &  
Joiners**



**Plumbers**



**Construction  
Managers**



**Concreters**



SPARK  
NORTH EAST LINK

**TEAM RANG WIC**  
LIFTING AND RI  
WOMEN IN CONSTRUCTION



# Construction Work Experience Opportunities



Offering apprenticeships and trainee programs such as;

- Certificate III Civil Construction
- Certificate III Business Administration



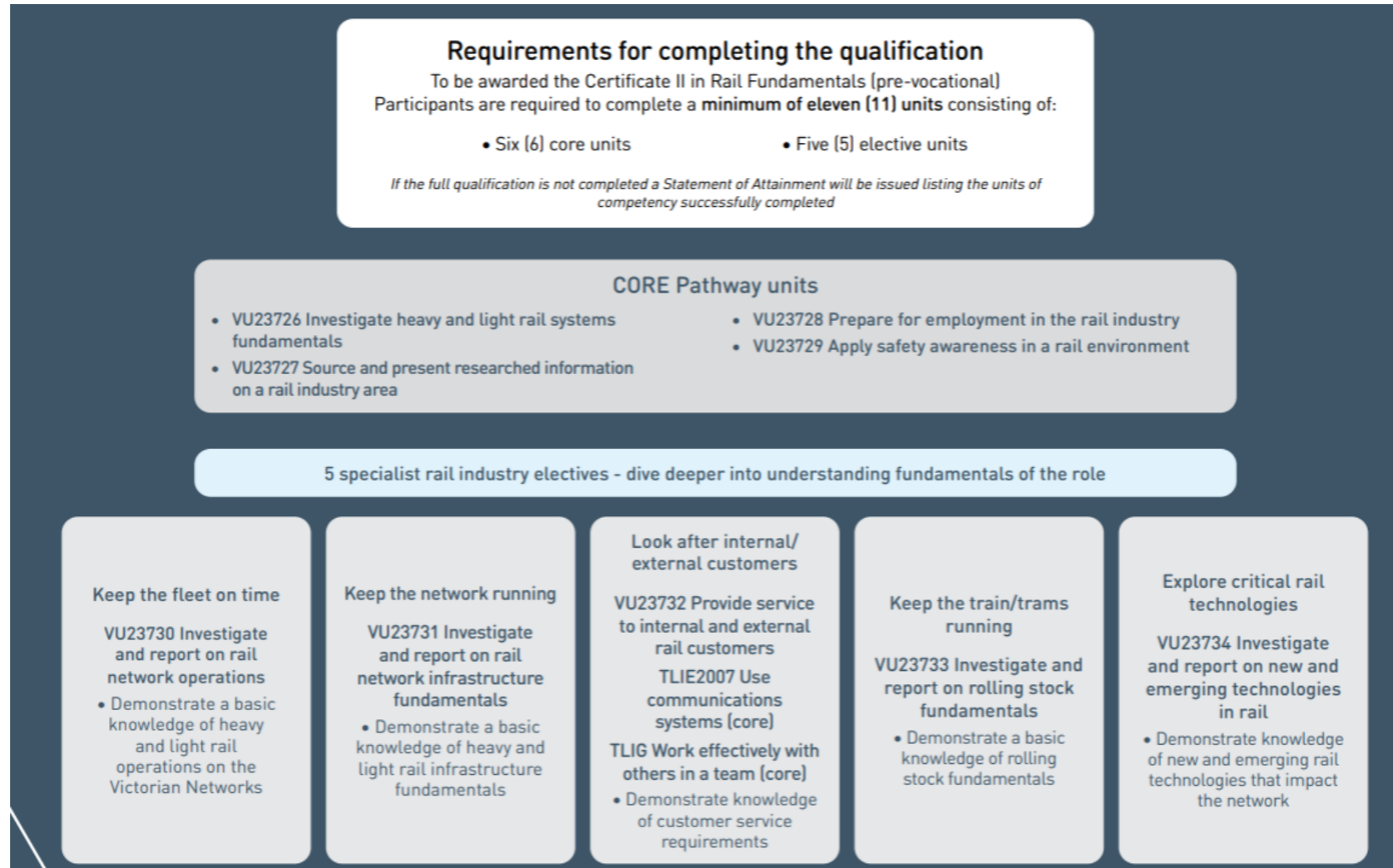
The 5-week BMD Ready program is designed to create an entry pathway for school-leavers to get hands-on, practical experience and build a rewarding career in the construction industry.

Participants who successfully complete the program will gain:

- an industry white card
- units of competencies transferable to certificates in civil construction
- be considered for full time employment at BMD!

# VET delivered to secondary school students

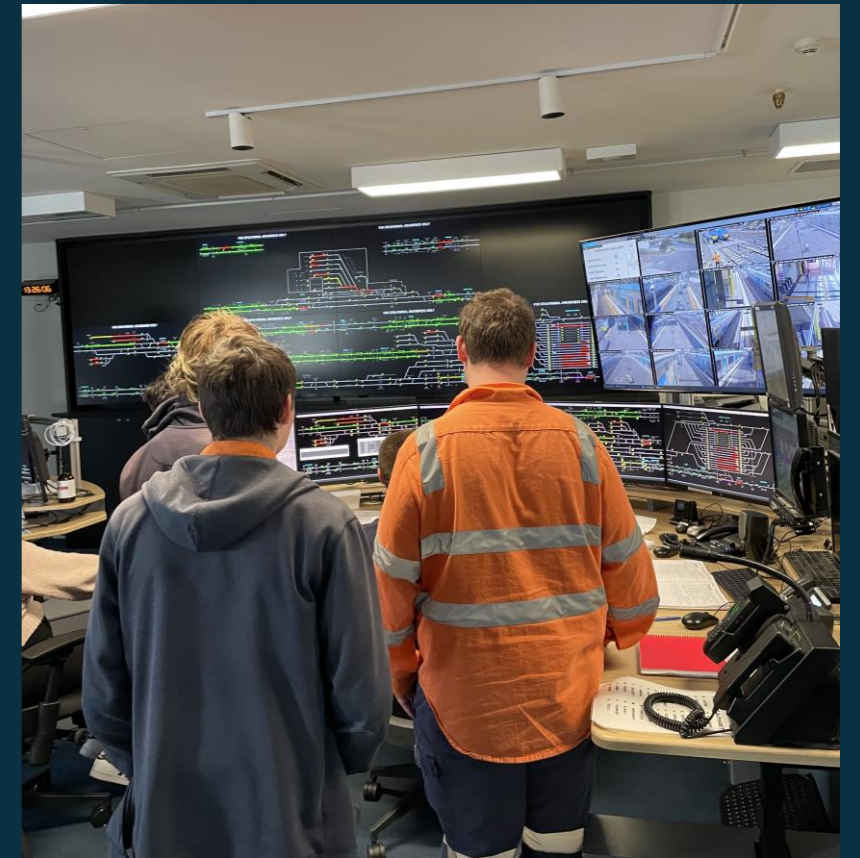
## 22681VIC Certificate in Rail Fundamentals (Pre-vocational)



# Certificate II in Rail Fundamentals



# Certificate II in Rail Fundamentals



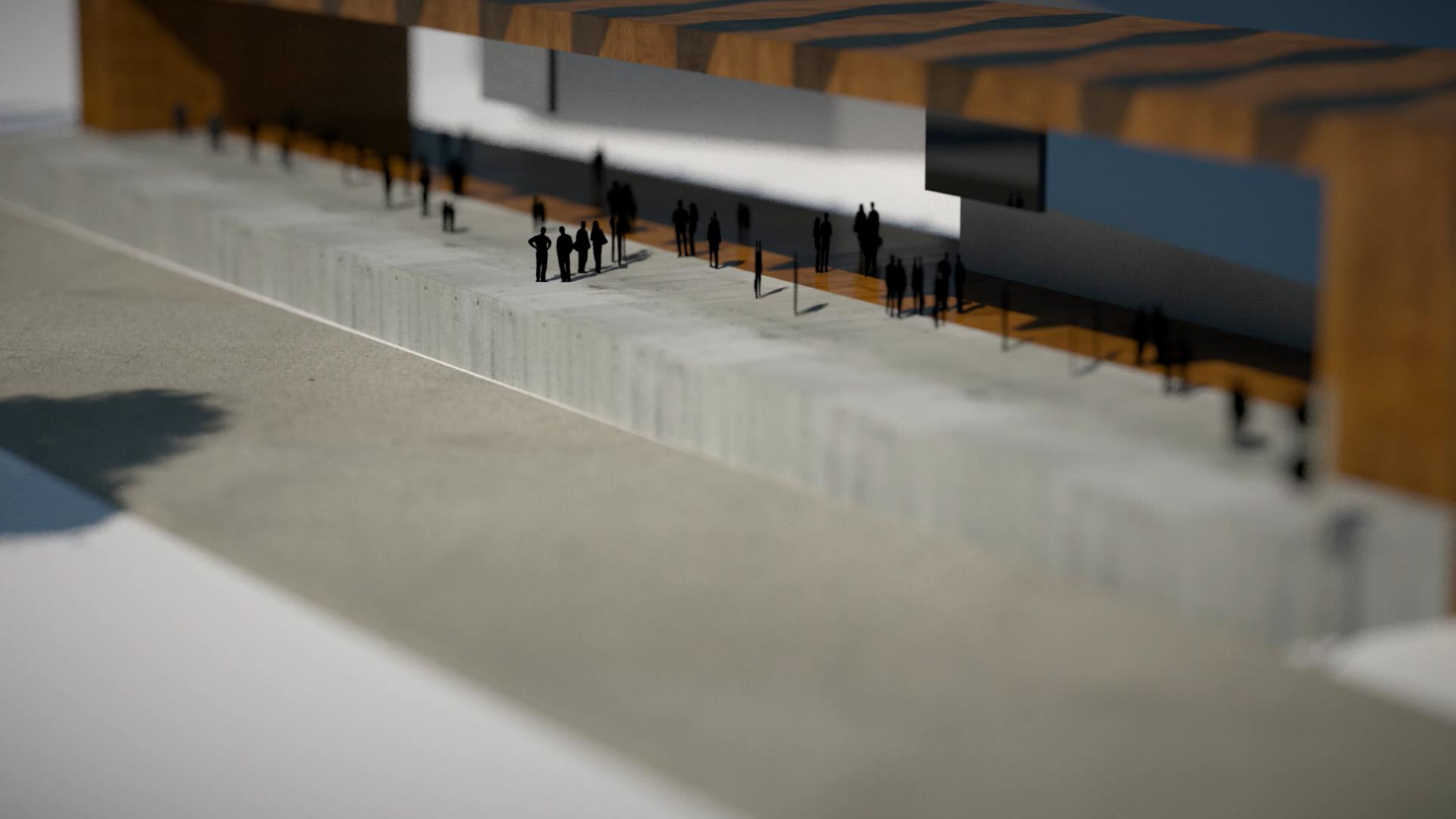


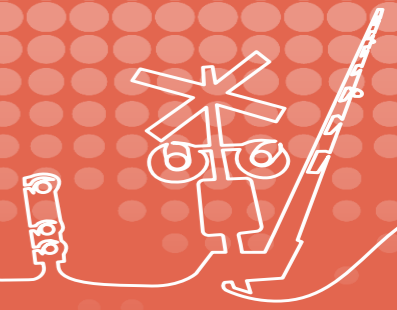
# Scan the QR code to express interest for the CBD, Hallam or Ballarat location



# Jobs in Victoria's Big Build





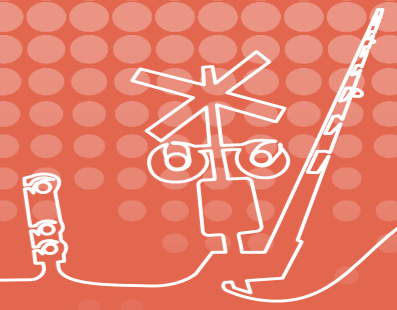


# Jobs and Roles within Victoria's Big Build

In groups, use the butchers paper provided to brainstorm and write down the following, to your best knowledge:

- 1** what roles are you aware of within Victoria's Big Build?
- 2** Outline 2 or 3 specific tasks associated with each role you've listed

You have 10 minutes to complete this activity within your groups.



# What can a role in Victoria's Big Build look like?



**Health and Safety**



**Engineering: Civil, Structures, Electrical, Mechanical**



**Communications and Stakeholder Engagement**



**Sustainability and Environment**



**Innovation, Technology and Automation**



**Urban Planning, Design and Heritage**



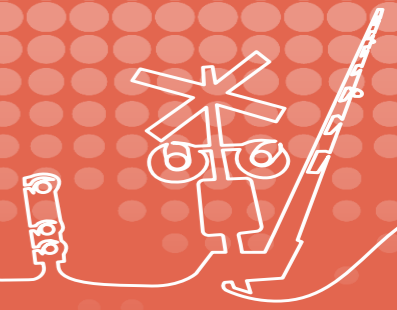
**Workforce Diversity, Inclusion and Capability**



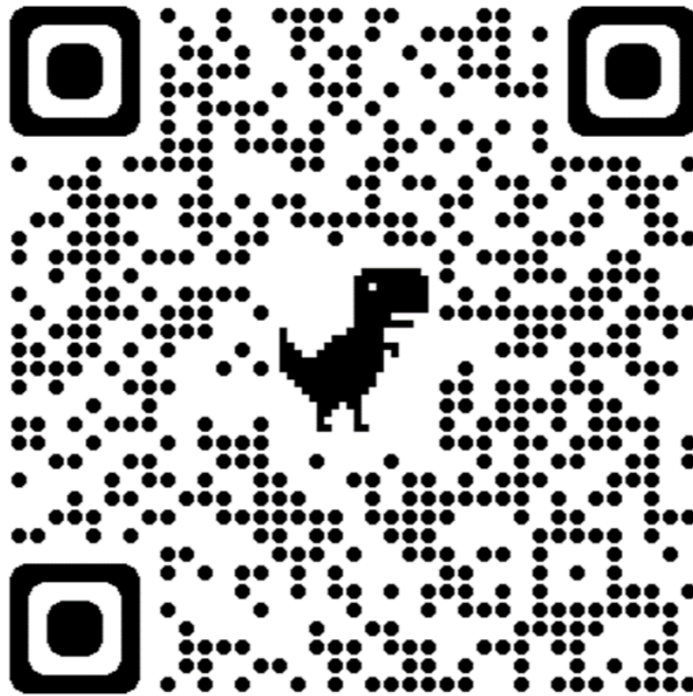
**Human Resources/ People and Culture**



**Information Technology (IT)**



# ARA Self-Assessment Quiz – what roles do you get?

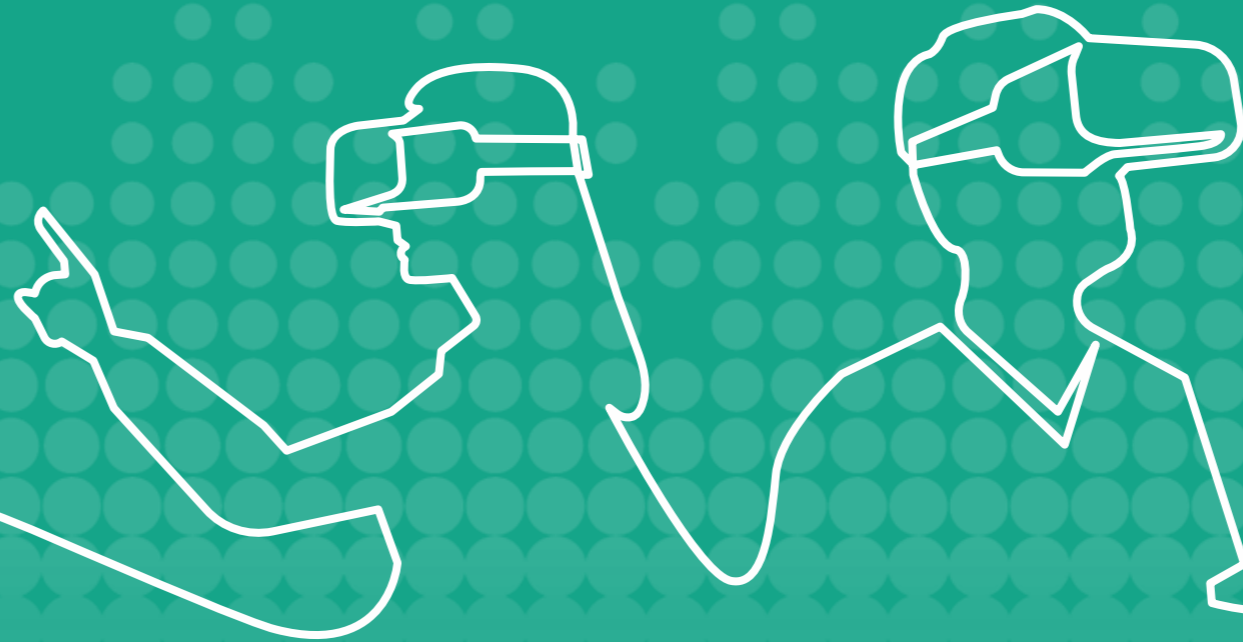


# Break Time

Session to return at 11:00am



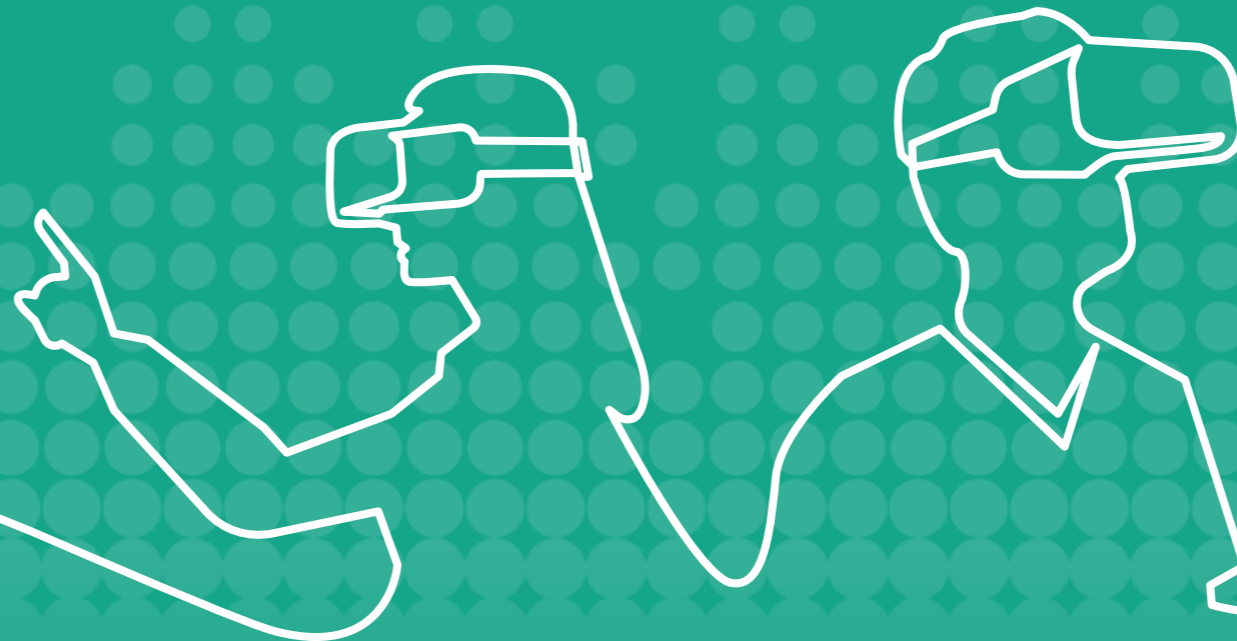
# My Career Journey



**Carly Murray**

**Training Manager – Driver Trainer**

**Metro Trains Melbourne**



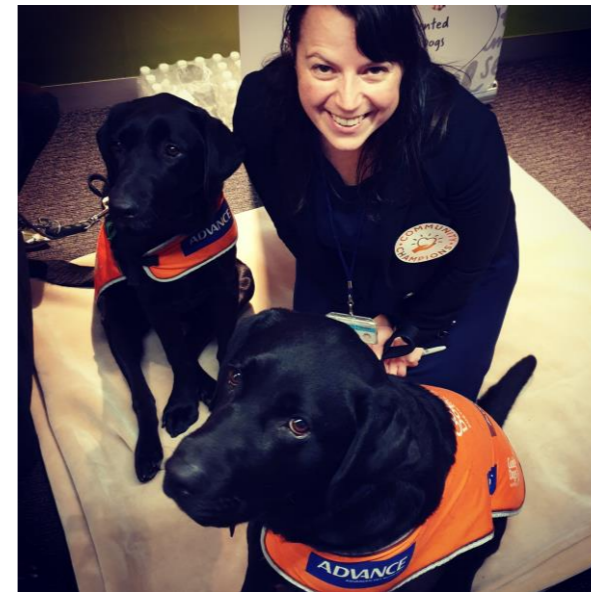


# Carly Murray

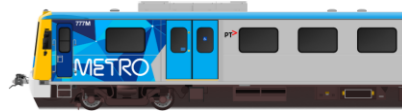
Training Manager - Driving



# A little bit about my career



# Becoming a Train Driver



# My first drive



# ... and then my world changed



# Life after driving... whilst still being a driver



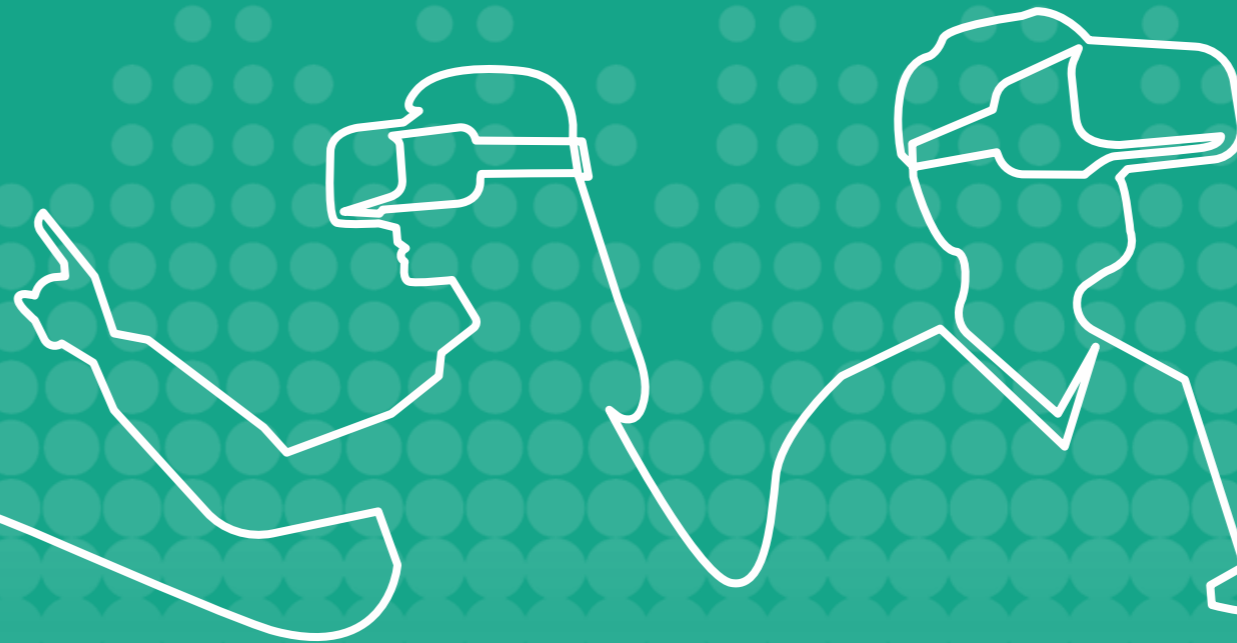
# What we look for



**Sally van Bragt**

**Train Controller – Network Control**

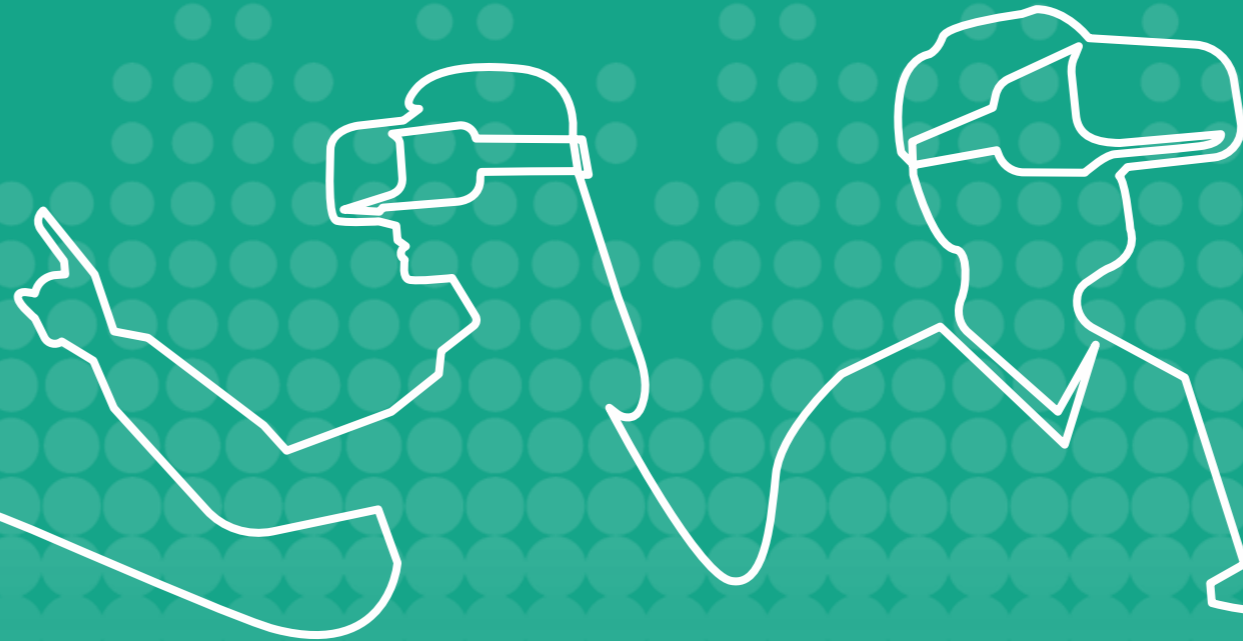
**V/Line**

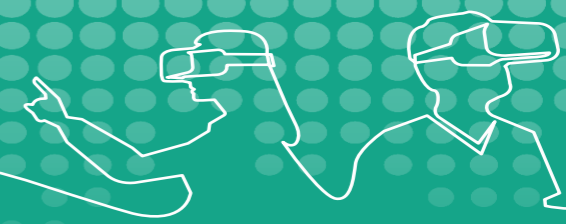


**Brooke Zawila**

**Senior Occupation Coordinator**

**V/Line**





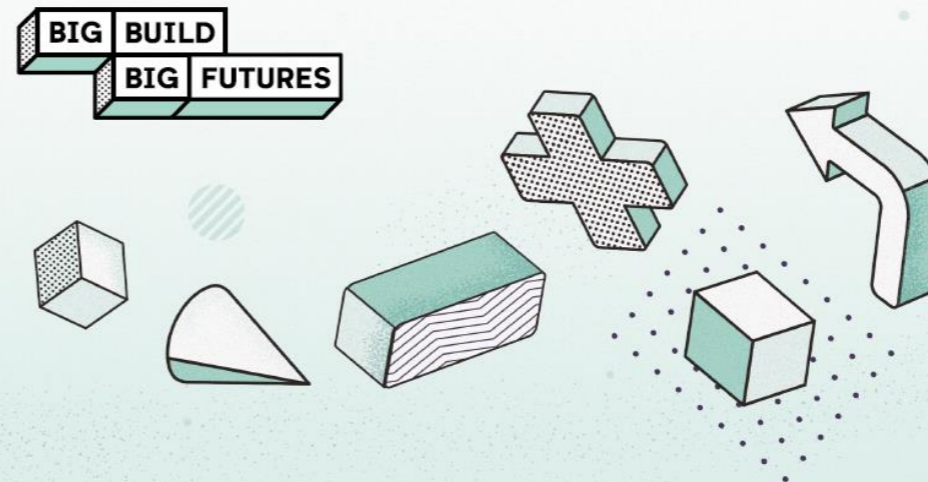
Please scan the QR code to provide your feedback from today's session.



VICTORIA'S  
BIG BUILD

# Big Build Immersion Day 2026

Any information, please email  
[BigFutures@BigBuild.vic.gov.au](mailto:BigFutures@BigBuild.vic.gov.au)



## EXPLORE CAREERS WITHIN VICTORIA'S BIG BUILD

We invite you to bring your students to the Big Build Immersion Day, a one-day event at the Rail Academy in Newport.

This event is aimed to bring awareness to the career opportunities within Victoria's Big Build. Tailored for students in Years 8 to 11, the day offers a chance to experience a real-world training environment. Students will participate in hands-on activities and explore diverse career paths, including track work, station management, and safety operations. They'll also hear from industry experts, gaining insights into future career prospects.

Don't miss this chance to inspire your students and help

them discover possibilities that exist within Victoria's growing public infrastructure.

We're hosting two events this year, please RSVP to your preferred date. Schools can bring up to 25 students per group.

19th May 2026



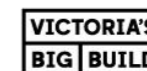
13th August 2026



Have any questions?  
Email us at [bigfutures@bigbuild.vic.gov.au](mailto:bigfutures@bigbuild.vic.gov.au)

*Event dates are subject to change. We reserve the right to cancel events if minimum participant numbers are not reached.*

[bigbuild.vic.gov.au](http://bigbuild.vic.gov.au)



0012306

# Thank You

Contact us: [bigfutures@bigbuild.vic.gov.au](mailto:bigfutures@bigbuild.vic.gov.au)

Scan the QR code to learn more about Victoria's Big Build

