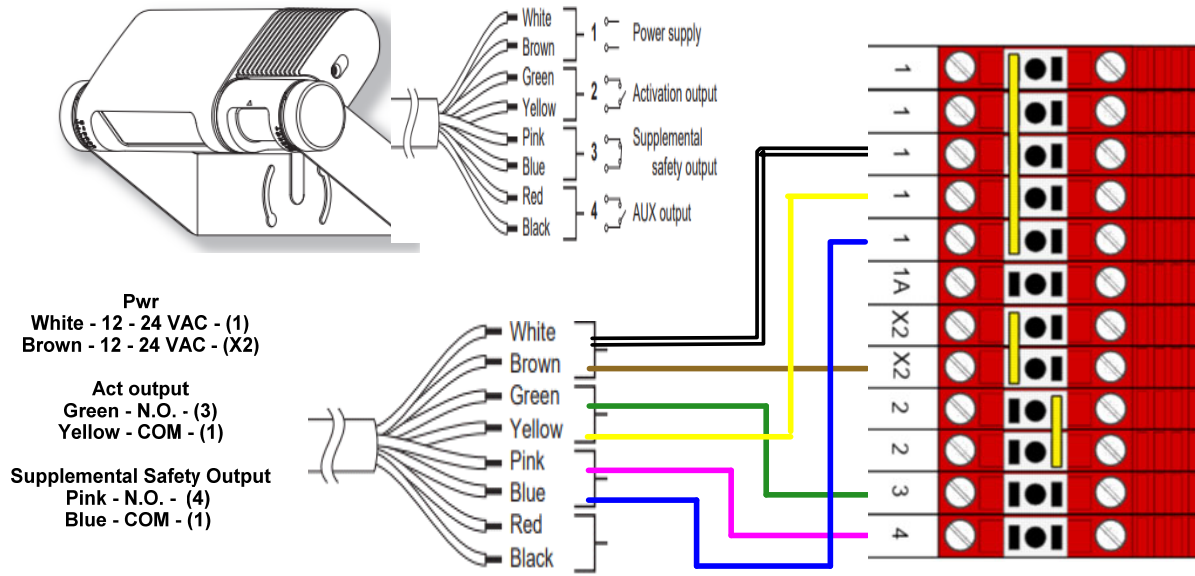
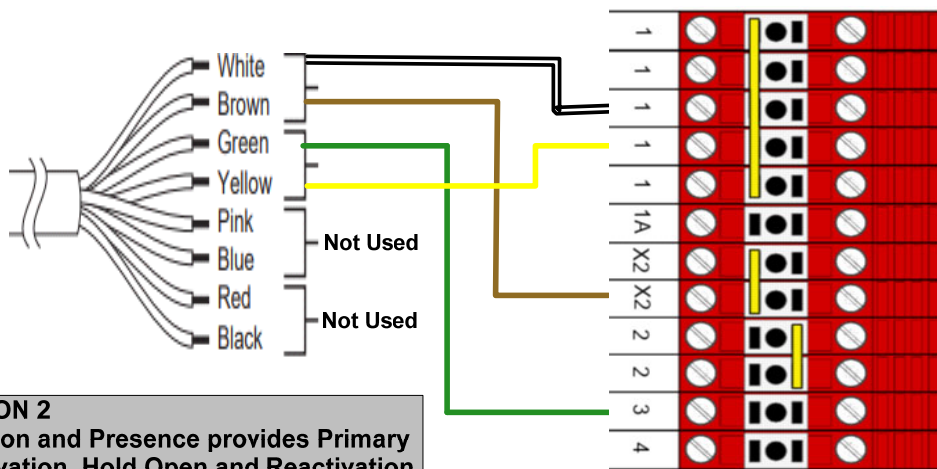


Note:

1. Ensure OAM Explorer Activate and Supplemental Safety relay outputs are programmed to N.O.
2. If two sensors are used (Interior & Exterior) both sensors connect at the same locations as shown.
3. All sensor wires land on Bus Bar as shown, No sensor wires go directly to control.

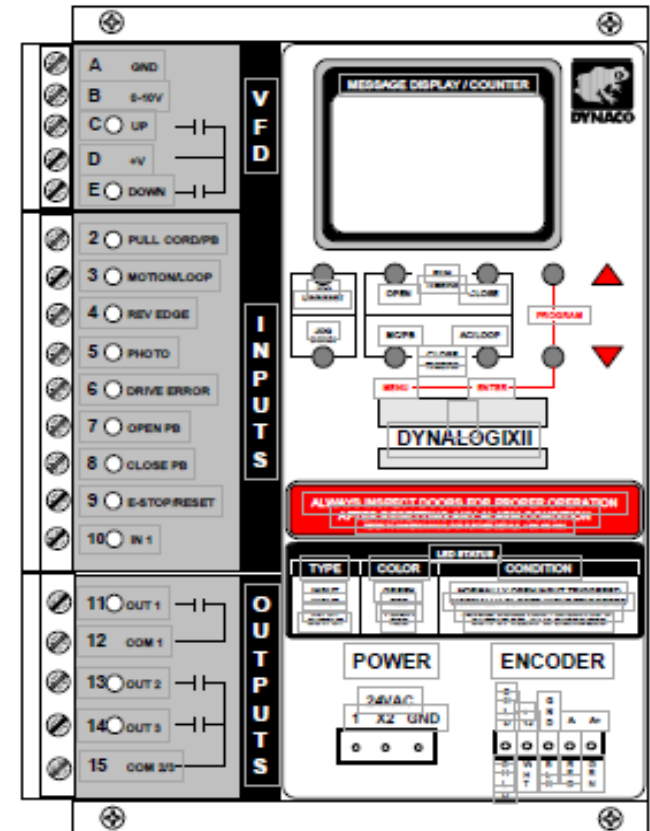


OPTION 1
 - Microwave Motion (Act output) provides Primary Activation.
 - Presence (Supplemental Safety) provides Hold Open and Reactivation only.



OPTION 2
 - Motion and Presence provides Primary Activation, Hold Open and Reactivation

Note: When Using Option 2, on OAM Explorer, program Output Function "AIR detection" = ON.



OPTION 1

The presence area is ignored when the door is at the full closed position.

OPTION 2

Both the Motion area and the Presence area are active at the full closed position.

Title: DYNACO Dynalogix II, ALBANY and RAYNOR with OAM Explorer		Drawing # 01DYNALBRAYEXP01 Rev 2
Drawing By: JAS	Date: 03/06/25	Sheet: 1 of 1
Optex Technologies Inc. 10741 Walker Street., Suite 300, Cypress, CA 90630 Office: (800)877-6656, Fax: (310)214-8644		