

I

it it y

I

I

I

it it ye an a

.....

it

Pr

lc

or in drippi l'

.....

si nes

.....

e

1 new

A

plan

vnole co' f thic

.....

fi erm

.....

Beant

.....

S
nhrenia

I low sorry
S
I

c st 1
i
ungest get

t s c 1
r Highway

a
d
r
classe

j w
i le
to bed

g 4 se :
l ut :

made
n
t
f

th
g
ra

I
fa
ci

it
ca

to
w

an act
hi

a RA

flies

to
e were tak

.

b
fig bus of s

cap
o-ong

.

or it's a 10

(/ are
incl

.

11 rue

.

every body

.

to
tl
is gonna b

+

.

I
vav

kwarc
I can't go forward

.

at ... or ...
m ... with n

yo ... nd ...
fc ... re ...
est, matter

I' a ...
fc ... an
at ... must be

m ...
e public cl

yo ...
th ... as ...

s Chr ...
he ... complete ...
lc ... t.

w e yo ... round
at s ... ig ...?

er be ... /hen
fi ... it

ion sine

1 mill s from m ho
1 mill s from my ho-me

c lake se
b r
a s,
i t l d
ed in year

t th
k lf r
he have a

our da l's car



a Marina P

of

Even as tin
that you

doubled to
ne 8 to ge

times the in th
paragraf'

hand wr
Leaving
problem o
e but war
out for the

about. I
was inspecu
ly ever w
with some
so usually r
just in a

Which is

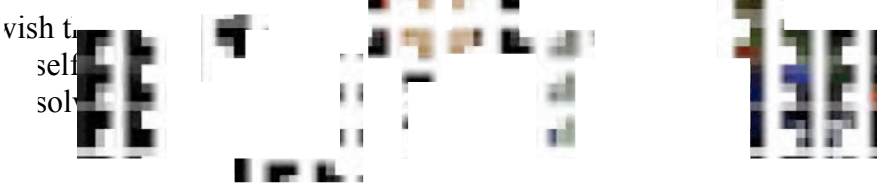
September

that its
the work
ation all

a true praying
scribed
you self



need
th



wish to
self
sol



lv

or megr

cha
c
v
material:
not co
althou
cting the
I'm
"
v
the insp
nt - does
neve
relev
the poem
t
t
The p
can't hel
with r
differ

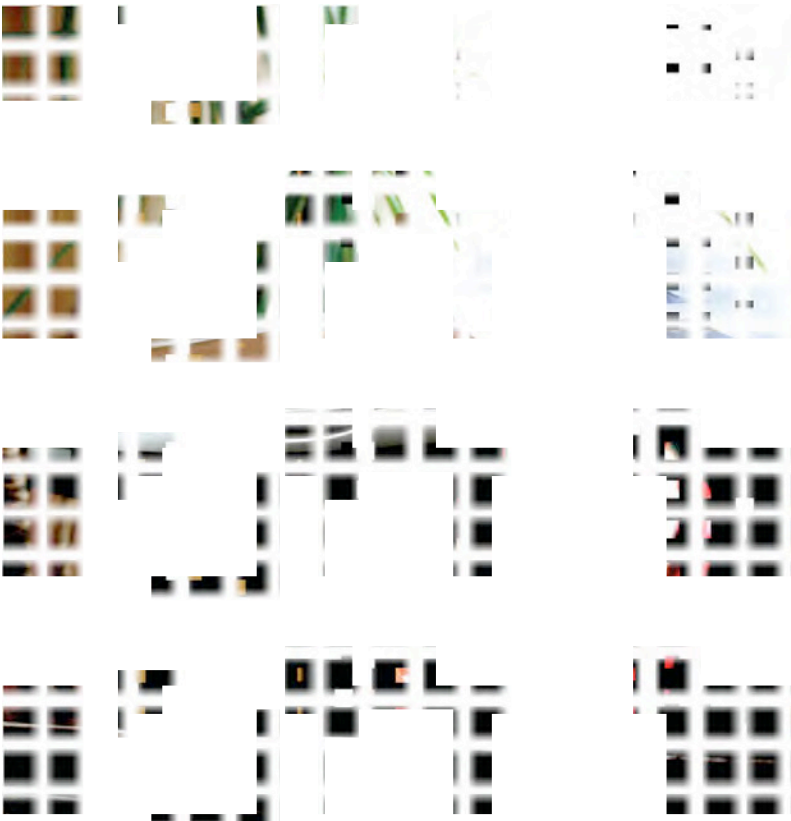
c
is
the ev

distill

it's an
at the
that a
a
p
tl
r the p
thus

Dwealthth

legs spl
the milk of
t instrum
-bubble?
wait until you
and wait
systems
I get the
en Adam
ik



long w
side coding p...
sw

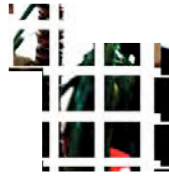
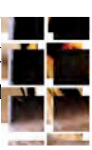
Challenged

nd
ina

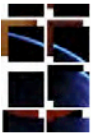


a sort of
fall asleep on
inevit

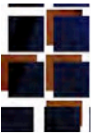
really
'l be
a n



come to n
to die utterly
it is nec
to give b
I have n



then life
you must d
freedom
and then
and let us ma



the onlto

the of the tree
h I just did laundry

re



Figure 1

Their Prer

the ques
what work
are we ar

the ques
what wo
any farther

the questio

the ques
did we go to
etc.

Optimistic
credulit

beyond

ovation its
society

boring
if we be
sudden
for how perer
ntification
hadn't be
to based on 'f

before i
already

partakes
quanders

but does it shine, or did it shine?
In the case of the...
...at either shines,

...bring,
...the
...the

...such
...payment

n?

...enough
...paradigm
...ance

...near
...situations

...better for

...a case
...given



100

culture

around

»

communicati

him

^ - you acknow

ch

from to

and

» different

clear notio

Which a

the machine

now

interest

to excuse

erence

feel

poor st

re differe

pain

to

and

you can

pass

locally

poets

most

n industry

any

a

helps

a

relate

less and of
third of

ig

the

the

some kind

a

kind

too stran

ige enoug

you

to me

on

as little a

nding

some
little

largely :
multiple

play
until

I would like
connect
at

inspiration
or

Also he
interest

are
but

other
here

re to the

anks

son's life

culture
tired
says

in

urge

the how it

ough

state

than

all

the

world

presen

rightly

oday to get a ach
, which

God

eveno

and

the

tantam int

of

revers si

matern
conditi s

blindly

it

yet subj

avance t

indulge in th

in the fir

never a n

erful an

footnote

actual or pro

ard the g

seed ar

One

tion, ev

Incarnatio
there is

cultural

ure is a n

it comes

culture

ve diffic

universe as
to what
a different
the bridge
for its world
Though
other people's
worlds
of the
term
the rule
world
me / th
m
: or u
experience

really is
deceived with
its own
moderate
it actually
identify v
relax
I dread
in last vis
your ac
the ess
ject to d
preciating
do
it really
househo
the mind
compa
elps
ward prof

needs a 21
with refe

reduced

ou ever f

and a write
li

distillatic

as one

wind

but the v

upt

iral

the meta
especial
and refe
s about t

all poetry
of the neur
cynically

language is

The import
the relat

the conditio
re both th
that conc

toward r in

necess guarante n

rene big to man

en ~~absurd~~ 6 in ~~ige~~ ~~itsc~~ as,
less
I'm refe
work

certa ions t others
Sincer

worryin
ted by an t attack

men

part of: netl ger bertaining life

as a ma
terial of t c f
conditions

at, hc
sistently an
s av catio | real
ng in their peremf

, actually
, though, v

: that it want rs
cultural
ice, etc.

The poe by deep ea n
sking with

onal ial t t

detail & ...

with the ...

academ ... the new fo ...

I though

some k ... d ... io ...
neuroh ...
despite ... pp ... s ... er 1 ...
ut of ten fl

t ...
aestheti

fully A ... ke ...
and wi ...
a sort c ... nature as such,
g ... e fi
u ... e

wife has ...
and lives t ...
it takes ...

neatly

they look ...
with a comm

fall asl ...
mercif ... tic

I don't l ...
it proba ...

success: I m ... u at when you look ... em are then

side codin ...
many of th ...
But I ar ...

they de ... it work

I have never

use ai ... doin

municati

esoteri ... of ... me
I mean

(My wa ...
the heat ...

laptop, g

leather c

between was

The boy Cummings II

landlord al' spe ster

(One of 's ich
lace it wit

lf of the left
(or at th
ously
I told w

ack on w
Late Ni
ne vicie
servant

ve turned a li e br
em alive
I can't s
sore of ele

vhat t a lit e bit

waysupem
ptop dehy
Before
Google

h is m





the w right

Without M

These re
as few objects
e to give
e think th

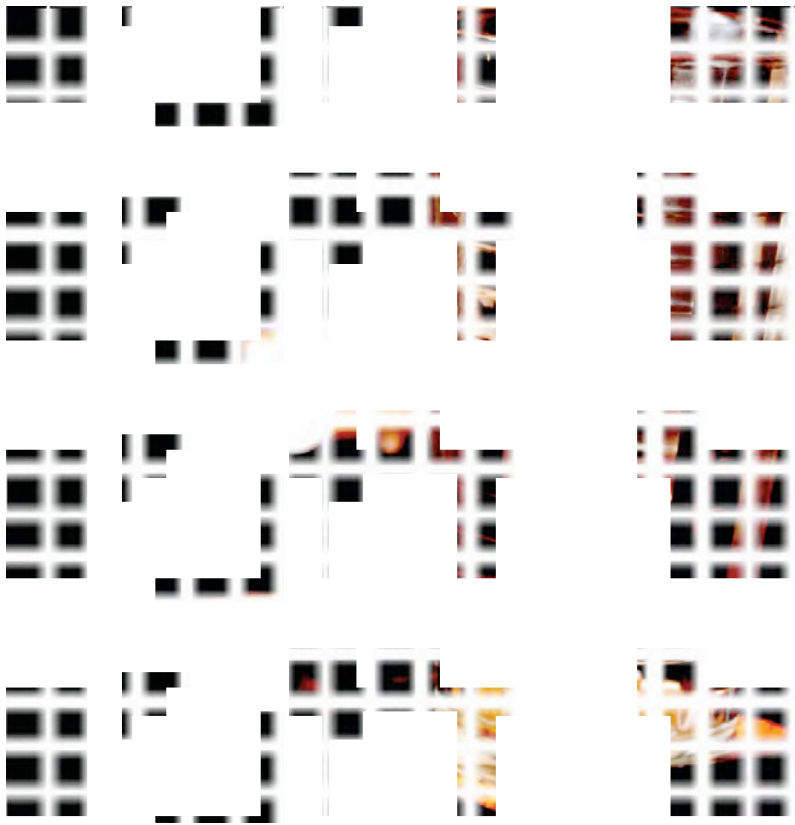
people s
make pa
in other
zation w

possibility
singular, ur
time and
too fuck

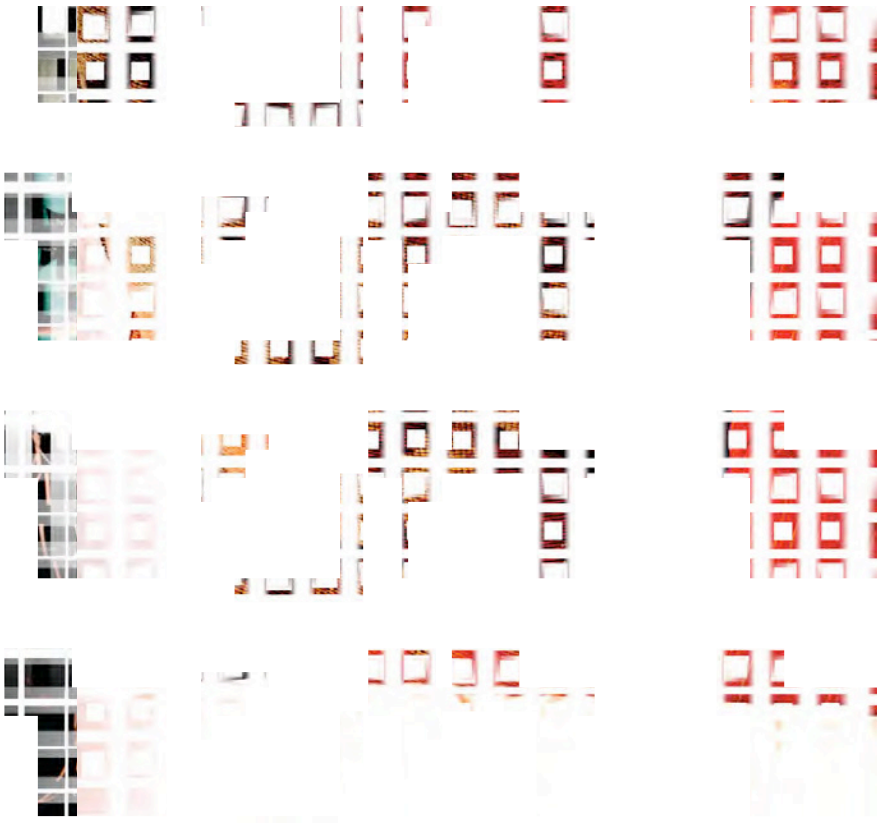
rcolors v
watercolor
integrat all
razor say

“forget i
ting emb
d it. insp
osite gets

set up a
ordinary
tings, color
ult blue v



work



work
probal
serve

e

Dark Inca

Today r

Instead of

ie that con

heart see

intensely hea

It is ang

But no

Hurts.

lay and th

el shame

see him a

I want hir

That I v

Never.

Fantastical

it if I ever

mit becau

want to see

Everyth'

That he

Like to

neplace fa

hurting m

as hurt me

Is my own

He is hu

Even re

Do believe

hetic mor

her rope.

nce

ts more th
stant com

'8

o be j
emotion. To
ess or des
notion: my
is picture

same

old h
nt me. And
be happy
s my heart
I truly bel

o m

, I k

1

ch

eepest
again. God,
ne to ackn
hing on th
t he is dea

ake

1

very
hough. He d
le probabl
...which h
ome a full

is m

sn't

1

/11,

me O

.K.

Sorry Inso

I'm reall
Better to be s
lunt, but

I'm sorry to
rooted a
least for

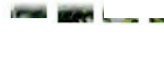
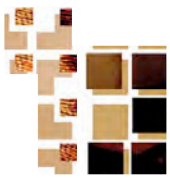
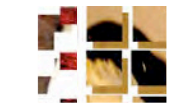
American

*"oh that
of life"*.

pious, fa
sitors ac
resting that u

ry, tribes
that falls a

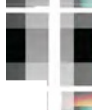
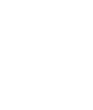




...
way ...
what they v
n top of th

nmur
n†

...
possibilit...



f paintings 's reb

*

I am
affic
eyes
lass of
which
me
but n
st nig

with ma
if yc
It's
his.
's lik
ror
placed

so th
e reve
esenti
as other
you s
and t

I used
till
write
ich I
res me
ery ni

glas of everyday.

As I see it, the mind.

range

like looking at a mirror

mirr r

the sea i th , a

cult

If s e on s t, is

reve nu i

ing th

legs sn^{er} apart and bent,

and re e

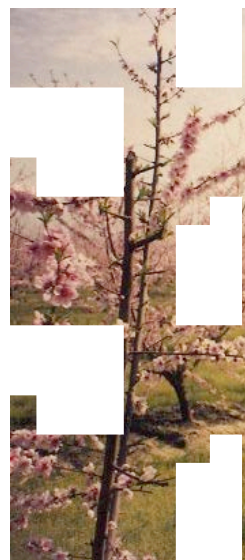
Drier

7 W
lac

nk ag lack

as little possn
ee 'be n 'sal
; C t eig

ry light raunc.



specimen

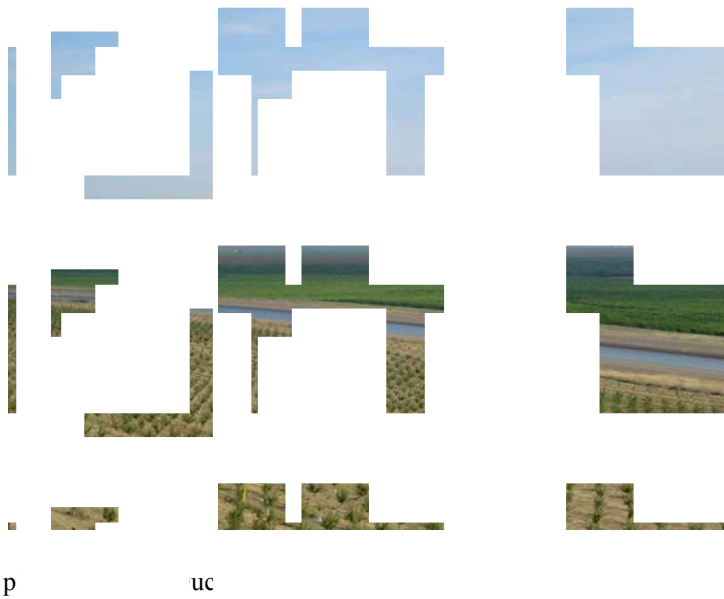


Get on a door. No
direction from "th
or water before

1 of them
er works
to s grandma

sentation. A s
clusters togeth
I've always loved

EVER he straight
next time I'm mak
cus in a video "



Get on a door N
 direction from "4"
 or water before

h of them
 /er works
 to / grandma

sentation. A
 clusters toget
 I've always loved

EV the straight
 neat and I'm mak
 cus in a videoc

fourth draft

, mind want
firmame
t? in a ca
ar
not
b-
er,
at s
no
three
three
three

[y unc
y
ork. you
mory matt
oto Thiel
represent
appiness clusters
I've
ch
na

that trip as a
ways see pt
essen
my fo-
e: vs.

riving

her
ve

netwo
the
ed this
traight-

ued.

Jaldo
baum

get on a a door
Now, mind wa
[take directio
t before v

in a riving fas
each of them the
and see faster
we used to dri

standing
a v. presenta
you are building h
the memory n

[I've always lo
/ great gr
it-on from
next I'm maki

with my focus

second draft

I have him in the land
just so he'd see

Wednesday

... me. The night
v do y reflect on the n
v h... field
C er t ? I
with blue

... amer before
f jam

y s. ... rer ... 5 or 99 i
ntal valle

... look at jus
b ore ... to it and look at
b ... to ... ry
d ch ... ey l
... away ...

... ever works
t res ... my grandma al

...ing for or c
... get?

...
... ove ...
... making a d
... a sky in a
... y bench.

water

... 5 or 99 i

... ou st
... hole way pa
... ght as yo
... it's fun
... t on and

drive
... rows are sc

... est memo

vic

There's this
Nicholas Chr
the US. My t

... networks a
... ing a visu
network. He has
happiness ch
thanked me
That's a pre
... ng with c
... together

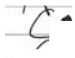
... my wrist is killi
weekend off

... ave video
... your chi
we ... h. If not,
you can send s

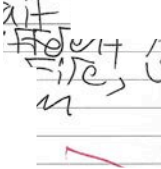
I've always l

Yc ... kind of s
way of seeing
become the

no 121




 b / 1 10 500
 photo taped
 2
 0
 F
 D



 dit
 flow it
 site
 n

5 goes LA to SF
and I drive it
very similar

vo lane lo
of p

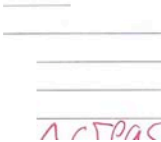


 a 110
 Similar
 e





 H
 1
 2
 1
 1/2



 1 1 2 1 1/2

1. 1. 1.

st. acer
se. d. b. vel. t, a

from
the poem

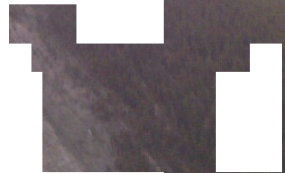
--

over App

[http://www...](#)

ROWS

ff Poems



2. ... applying
... a small book
... 0:0
04 (...)
Barbara ...

7. ... Machines
... as technology)
3. ... Fehler
... ber c
... c ... wri
ZachBl ...

... "Electron
... Disobedience"
... ar F ... g &
... t ... (U
Alex G ...

... ce space for
... all the equipmen
1. ... r lvr r ... nov
... ve r ... welc
... r ... con
that the ...

19. ... two groups
20. ... nat OK so maybe ev
... a e
... it' ... ger
cultural ...

25. ... ectify ability
... ere in a national p
2. ... m als l ... rtic
... c f ... var
... ore ... entr
... this ...

31. ... r is the Waller ...
... is the
... ac i ... ont

at r /s u
nroora

30. er pro ramn r



40. ole of he Ba
visual representat

1. ech
a ory
1. r

43. culture [un...]

44. osi' discipli' circ
1. :
ur % y

Wester

45. nabel e Vau
intern architect

46. sti /en ectu
ee (d c
est SOC wh

50. structures
potential

51. d' tve elv
1. i :
m (rity
false co

56. gues the
57. .. fake manng

58. us t e tun
w l
and oy b ir

60. low a ot ad
the Banff Centu

61. it' is a rful
1. i
t. e ter

you
this is v

going on a
58. say a quick hello
get and
help and
10.1. ...

week is dinner
73. ... for all participa
... /hil ... he
you ... byd
... / ... e ri
74.2

... computers
77. ... and fixing
... or ...
... he ...
... sne boo ...

of the
32. ... second floor
... and ... ase
... tie ... ties
... r ... vns
... and six

... you walk in
36. ... the right
... of ... ts
... r ... e
8:30 thr

... at all
32. ... lar replacement fe
... at ... sw ... ur c
... ar ... e
... fé
... M...

... odation when ...
30. ... have ... rni
... t ... r r
... h ... ion

1 prior to
 103
 1
 2. were all

get used to it
 pretty quick
 1
 1
 2. were all

111. security team
 112 recognize your face
 1
 2. your pe

118 n 5&6 in the
 e're going take a r
 1
 1
 2. writing

123. so bu. they?
 124 have you
 1
 1
 125.2

a ha h i ha h
 128 e's low on the
 1
 1
 2. it

133 she doesn't
 124 usually
 1
 2. wa

7 started
137. 1 1000 cres
[40 have not that our
al i
da i
11 S IOVE

na and that's
with Excel
en oroc ll
S)
.1 l
2 down to

149. 1 'll jus reite
[50 exactly that's why
.1
st E of
2. THE W

's you proje
[55.
ip ys 2
itt) g
of e t o'
150 1

com nitted
[60 ju rry forr
ig) t
en e od
3. put you

tend d
[65. e really hilarious
.1 neic
ne (nat
pla

anything goi...
[71 on ce pos
n l e
st t y

an " " e
5 first of
177. k in a count
178 why remains a prol
1 ut a " " nen
lla r
1. let s ad " "

nsive semin
184 i to um new ideas
1 p o le " t be
70 c
e d e
2 can't v

190. ogether the t
191 g nized a problem
1 tu
m
4. particip

sort of desig
fairly informat
1 be rela
s
e)
0 from th

201.
202 w a room and you're
fr i
re (")
5. to anch

is mo ning
208 nicate your ideas
2 w be nce
's i
... one (") nk
2

214 i't have to line
215 or no fan " " wi't
ist e
rtu t ng

on 3 /
to do ve

221. ...ing to stay

222. ...al

...t; ...

er

... all of th

...n wh

... as this goes on

223. ... ai wh her

... hi : scl

...v

... with his

225. ... the n ore

234. ...ow the coordinator

... s] e 's

...l c ere

... absolute

... or JP & lit

239. ... know when

240. ... ou har ?

... 0² 1 y gt

... H (liot

... site also

F u

120 ... modalities
... modalities
... it ... uni
... et ... ds
... / interrog ...

114 ... doctrine
... l.
1 ... ie
... gl ... r
... ss ... disl
... O. Althea ...

108 ... something pu ... ric.
107 ... in Soul & Wal
... lev ... fe
... ob ... of w
4 they re ...

101 ... temporality
... page without tak
1 ... as ... ysic
... rlc ...
... qu ... i
7 most ...

95 ... em
94 ... what ... tempora ... no
... ev ...
... re ... agc
1 for your

88 ... instid duton
... kindnamyc
... tv ... de ... out
... ir ... d
... p ... tl ... h
4 ...

81 ... who's looking me.
80 ... I'm
... al ... d
... qu ... t ... cot

74 a playin g wd
73 u ere were
ke e
ir s
I cannot

couldonstr
67 -- own boom
g i litt
ca d ig,
de e k
very abe

or ma y cor
60 Carroll Street in Vz
w n ide
es d tler
chair the

know t more
54 ies in which one
yo ou om
er t es
j g i lor
of tencie

ve the em in
48 n
17 iot many dceptio
be e on t
t terms of

phor of
41 wise swaying

hi s r nr
t

oy ce upon
35 tt mate.iall
o the little nt tin
tl d nd
etc ons

M i

and -- another•
the e c ent ide•
ow t ow o is•
s really

o the dialog
her e four fragments•
ter l of
I t s i o
show

and t- element where
ic ilit ssil
to i rt e
vide cont +

also int it was
peo ave tools to te
in t ari
s c r èn
schemat

way s relate to one
A X E P
n t rst
coined t

Gur y in 1914
and psychogeog
E o t e ze
v o l as•
e extrem

novel of stagnati
a s f hc bitr
cs s ge

... in i ... an.
... vest i ... e.
criti
... ne ...
... s ...
... need t ... sel

... er no tion ... /.
... interesting in ...
... t ... l y ... ie.
... b ... oler

... on ...
do ... l to solve the s ... up front.
... pl ... at
... e ... s ... t.
... e possibl

to the
you
...
... fl ... tc
...
... TLI

... an ...
pl ... of finality o/c ... really.
... b ... y ... e a.
... w ... n l ... re.
... terested

...
of th ... cesses' re ... y.
... re
... vl ... ate ... shop.
... mmed ... st ... educt

... 'for' 'alter
a lo
... v ...

30
1. Stoff

self-education with me
yours
of the
Schiller

requ
e.
rary ac
course.

ration
re-
at
nerability

also.

per
n-
ontaneit

t mea
r
er
s j
t v

who
n:
u
ifhebung

sity.
ants.

a not
at
ur
si
oul

[de
g
ty

he word

of com
n 1
oblen cons
art y gener•
a
its f
annrs: 1
ssion to
evel•

I th e're talking c
OW you r
en•
th d o
th e
the sort o

e majority•
of able political c
W r² s 1
ression•
cc 1 th
unts as ac

on cri eria•
is to
at c' ing
to t ote
Harper•

or wo
resl on etc•

of a
ou have

ound ards•
and me write what ki
ays•
d e
r e an]

proq tess•
corⁿ olution games
oe s m
al s

it's...
John... the structural...
it's...
[unclear]...

e•

you... which...
marketable...
e' l...
ic... ce

field

have a... l•

ins... critical...
the instit...
idictory

ost a...
orm...
itique•

out... the lega...
re like you're...
th...
ns... ab...
uld not b...

g WI...
ng...
ay•
OK!•

every... North America...
est... or...
ut...
re talking...

ged•
ge•

for... the little curato...
it... y•
at... onv...
arity•

head•
ith him•

coming... does this moment•

of...

...
...
...
★th...ding premise u
...s...ab...ot s
...ir...ua
...esn't n

...
...ave about
...
...lly).

we n...way we
...er possibilities-
t...y...ssil
...s...tiq
...pr...ar

...ing-

cor+...ts of relat
...determines uno
r...t...cor
...ia...po
ies over th...

...s.
...ves.

...certain lav
ref...urself from doi
...ilt...
...if...SOI
...cial adm

...ain things.

but 1...out how a
...self-regulate
...et...isc
...ca...ent
...gave out...

...es.

out...ave to we
r...to...et...the
...on
...at...it...iet

...sigr...S.
...ts.
...nent.

...ger Theory

...it-G

1

orc s ntiā
ec d
ERIC SOFT S

ā pl in og-
a e
ity o
me this is

nat w tually aware

ed v
nc ā te

here hy an

at the ce. no know
how gain
th i nd

the desun

prent ment of the
a ta mc oss these signifiers

ce n iiii
t yet to?ve

an an being -
cro

of e not
that com

the y of the
ly
[?v e nk
ha
relati

one

unve is pag
reln re

kr v ca
ne contain

it transport

on
g o me

ouple mon

und ac
s in re,ree.
t ()

more ways
that admire
be
e l
use kinds c

diff
you
pote
on to

ie's
tation!
nore.
onary.

so t
r
other
problem I
or
th
ll
if you can

per
can
the
[unc

ose ex
ndersnip
l
(common)

not a
the
unity
m around
b
ic

men
Rob
geographies of
's i

hat
w
ays
ge's quality
uir do t oca
st s edg
re is a priv

ime
pseudo-community
ot

uncia aders: ip all
if v put your per-
 in d
 ng t
 using is gc inc

ther: someone in BRISTO
t ov ru
 le b
 e1 s de
 ition of th

does
a po
our
the

ever
is a
and
is a

reco
with
,

form onging
 gainst
 belonging
 places

ne w:

nity

needs m-
 e"
 rm of measur
 idividual
,

of the ... parallel ...
the ... farthest west co
... the
... so
... beyond ...

he pu
en these
to delay
completely
... the

opulated and

inds d

a ... ing ... ic
... d n
... e in
that know

of this are
h also
analysis

Snap ... d Citizens: ...

Squa

super-omics oh bu
fac- with synching that w
ac- i'' ne i
ks t Dar
nimon napj t dt

in yo're en
und -- man precisely it i
r w lum ne
w iciz
na eou
se indigen

renov there's we
at in quite can kind
yo NC y st
ati ex
ually need

thin cooperati
m ybe ecological nat
n alg ha
as t /ing
s l ser
ation fore

so, u ater, one do
v et either even be
su f ha
if noi
phenomena v

to number t
o I t uh only because c
f] rare f o
iel s ma
O cha
A C

means d construct
synl is in reg future
tl rep
ue e u

v blur
nd what in sc
Paige the
organi- ca
historical

e the
redominant r
s human tl
t's if socia
he the that

get fo
d turn you ca
we're crude
ould the o

t war
ed seems cer
now are n
ed is love
To commo

as this
s of to know
synch em
ating we to

he th
ier just to dor
k of of are
is not the a
air little mo

ig n- in long
on contempo
material bc
ate not is

ier the w
ing it urable th
ike place-holder
ture we're Ma
meal for the l
and there sort

refuse
ughto ital but m
d what dangerous
hat superiority
there's institu
ent don't a in

at that w
and

e blunt you term
Stanley in
t; in is thing o
nation-s
w others

m ma logic is is
of clearly are
nlightenment
going I relatic
ger want as of
lose I
part little

it think horizon
ne that comm
te of that grou
ivulsion a
ot that's

n't is the sound
ally spontaneous
with think kind
resonates anc

nd the th
ore the of
off in any per-
pitalist of perfe
me of way of
nstruct mean

me mutual p... hft
produced t... ing c
it's cultural d
l t... sub
er... son
s we gene...

forms of good
with aid property
I... s de... an p
... art
... is by

ects o gans l
e had institutions of
ns... or
ol... iall
... Fro

e subj ct sor
nature perfection r
e t... he... of
da... efe...
[h... ge...
... techn...

conflic in wa...
life of construct ab
fa... mir
ro... uld
mber prod

ing become tl
r up of we those b
oc... of fr... nat
?)... s... pon
... c... b... hie

... for al
e construct... and
Out pro... new
c... id

erse say sci
rf in s
eresting urge
a meta-sta
our time
solutions

s som
common nat
ies I call o
cause and

at wh
but water me
e comes A
many.

re you
ire to rest ide
sheme son
ments all r
ions practi

ie of i...
of other for
an up a of
cal the wa

state
il terms not tl
l of it's ide
one projec

...
in that... p
hot and some
onship dri

erty about ord... a
in it um o
goes

reaching comes ar
ve big value, a
lther that para
... nature and to
rior is t

perty... e
that clock communit
often to repea

rganize, limit
... technolo
ebook effe

of the... ture to
on, the horse relat
ally that easy

... not kind a
ort society

to as... I operati
l I theory because
lue spontaneit...
orks out to.

ous using real
be the tha

... italism
ming... of he's a
the best start.

ould tempora
riality social a
...? You o
nent social

value play be job
cel finite notic
s cancelling r

ns
agement

other works vent
ships screw or

Basic... we
nominal value

ty as contr

phenomena o

which

neous y corr
on practice for the c
In ... mo
A ... gul:
18. C ... de

ve.
vbe the decid
aws the m
l question
f

on should
rganize water are

ccessarily th
search equation o
By the v
Let ... ion:
Fr ...
25. H.

apital

0.
H.

of

nothing I ever thing
I'm sure to give back what
I'm sure to give back what

you can have it all?

all of it got, so you
have quite a lot.

please type
ly s list
doesn't it

people access to what you
you can't see the
sir it's ours
it's what a

8/2011

...lized but lec
...government of self

...try ... disp
...ie BHM of ...

...ouca It bre:
...Croissant Affair
...th Wes an
...n t ber
...p t iati
...arms stru

...worse than f
...ave no idea how t
...t t
...th l k sp
...ebration of

...out thi
...efe ue as the will not
...ved ed ... n in
...ve - to j
...s: d verr
...119)

...tance of not ...
.../ this w
...ion / star
...Ve d iani
...claim val

...-polit cal va
...p & sometimes in
...or wor cal
...a ie
...V

...inchoy results ne
...ire of thi
...ch g
...ri

... not ... ges
existing ...

... project of ...

... my:
... ne ... cit ...
... er ...
... of course ...

... your ...
can't ... for the few – a ma
... is ...
... e ... lly
... ur ...
... nt's ... crit

... alternative ...
Kar ... critiques ...
... ie ... pro
... T ... ie s
... authority

... change it
it's ... define the negativ
... no ... suc ... erd
... iti ...
... can ... ite ... ver

...
∴ am ... on't critique ...
... hi ...
... tiv ... of
... (... ng ...
... kind of ...

... ation → equ
... quality of intelligenc
... o ... hen
... m
... re. critiqu ...

... p the ...
... analysis but propo
I ... S ... lar ... ue ...
... m ... gel

of t
nence/s

of role of int
menments
to r' nse
ar 1 n o
the way

19

t in ei lighte
ead Kant as self-
fie
sh 1 the
of r

re:
propositionality x
ti
ty € plin
free thoug

virtual potent
of facts on the gr
of the y of
dit 1 ssit
of you ash e ion

self-uestr
pe ive not conc
g: s ve.
lat >
constructi

g the work c in
are
al rati you
ic) nce
produce) ser

propo tion.
you c scribe presen
on' eng ing a '
hi) siti

in ... in
nresent

on ≠ perform

vo i re g
ev t s F
about Co i

ary to his pi
Dor... e-determination nc
se rea
d c e rivi
b / wa
me of that

interc... adenc proj
against Nietzsche & c
yi d n.
nt r t be
vidual bu

ps no matter
f critique & reaso
N... ele e: n y o
I? o sy:
m e art.
ness m

re Kant ... the revo
ea ... app
d: ... o a
limited a

y a certain c
Pai; ation about what t
ea sh ying
es t he
w ... ot to

Fi: the rality of how
r ... itnes ... evc
ro ... pc
ot

of the situation of the

example of people: r
of practice connect
progress.

enthusiastic
materialist telec
practical logic
but subject

by... sires. not ev
revelations
(p. 18) aff...

for it. where
in lie in temporall
the pres... sts
it th
ception of

it. ... tology as rel...
supposition
affective

3uc... olutions.
re Dorothy: not p
commu
bl... ails
ng...

to... ng: the cons...
represent is... ph...
etic
lo...

te l tuti
nresent ii

LD. p her = ust w
you s have reflexivity ab

m 1 c w
very uny

peo⁻¹ e con eptua
orking w/o a map
he nak ls.
vt y vhe
av t Kul
produce

It
I lil pur a lot except when
es t ity
ci { i it
toward a

ME genre of th
rn ourselves we no
ou lve nor
up o f ci
uf (er)
subject is

what enres' poen
ME i these rations have
a i k.
te i orin
form of i

interj retatic
r endeavor?
M ac the tive
ok
in i nv
t

no y of commu
For io his cc in c^f
as b t no
or t tant

ns

rela... mology: co-becomi
od... t...
pc... ode
more als... ..

mod... at we can flee, ov
c... ..

ni... .. from
bionolitic

to ne... coming wou
a m... co-becoming that pl
l... .. part
s... .. hes
ie its code

org... .. on the part
enter into affective
l... .. of its
by... .. e o
at... .. to c
e... ..

space... ..
zed the futur... ..
patt... .. without coming the
1... .. ru 1

C i

...ment"
'a re ... method"
'... of ... end
... of ... yo
... certain kin ...

...ced e ough
...ery two weeks
...at ... as ... dai
...c ...
...re ... e
...structure ...

...unani ...wi ...in...
'...method... replicable
...no
...t ...
...ospitable to

...tain kind of
...el"
...pe ...ca ... e d
...ple ...
...ir ... ora
...version ...

...there ...al sense of...
'...ce in community"
...id ...i ... al b
......s ... in]
...who don'

...it v ...ine"
'...a ...ilita
...e ...i ... g le
...t ... the
...?

...so th ...sentinent co...
'...practice"
...su ...
...al ...

ul: k car
nresent n

id of 'eird :
times find its wav
dc l cs"

arucipauoi

in
"pu
" ho thir not
all d it so
in are

זאזאזי פפפ פ סי פפי
וזוזי פפ פפפפפפפפ פפ
 פ פ פי פ
 פפ פפ
פפפפפ פפ

פ

פפפפ פפפ פ
פפפפ פפפפ פפפ פפפ פ
פ פי פפ פי פ
 פ פ פי פ
 פפ פפ

פפ פפ פפ

פפפפ פפ פפ פי פפי
וזוזי פפ פפפפפפפפ פפ
 פי פ פי פ
 פפ פי פ
פפפ פ פפי

פפפפ פפפפ פפפפ
פפפ פפ פפפפפפ פפ פ
פ פפ פ פי פ
 פפ פ פי פ

פפ פפ פפ

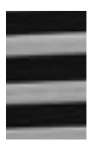
פפ

פפ פפ פפ פ פפפ
וזוזי פפ פפפפפפפפ פפ פ
 פ פ פי פ
 פפ פי פ
פפפפפפ פ

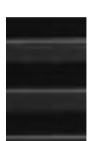
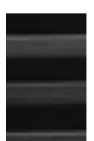
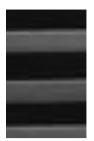
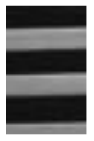
פפ פפפפ פ פפ
פ פפפפפפפפ פפ פ
פ פי פ פי פ
 פ פ פי פ

פפ פפ פפ

פ
פ



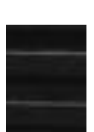
ieners Se
Adam Kat



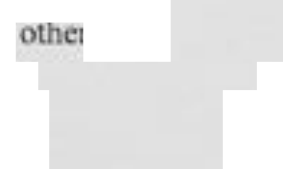
e ben
assume my a
dn't drive
nto the an
v



on is
times we m
ourselves
any gra



be so
people t



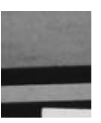
this is a very
I don't think an un
presumably precipitating a slight change in the environment
ng happened
d, I wouldn't
think I know
t what I put up,
fit
situation th
seen event w
big deal
envisione
ough all me

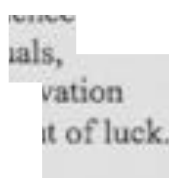
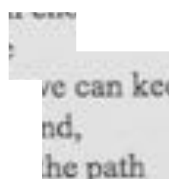
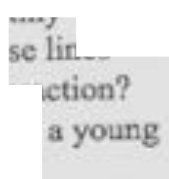
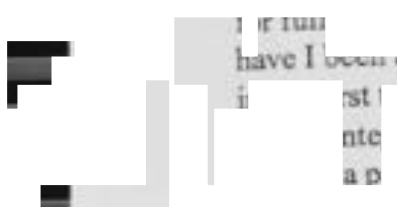
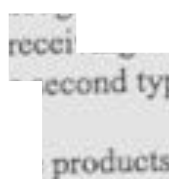
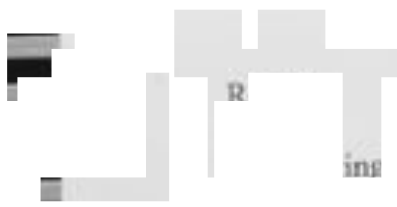
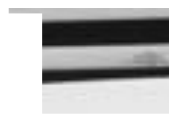
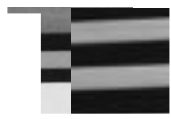
u say I could
e of somethi

do
that
er
s
th
at

ow much be
re
ibiliti
cing t
nt
s it lays
d like,
s nothing th
it
as
rg

d be not to d
ity
vance
gm of
b
ary guid
our pr
decided,
ut pi





ss,

Discipline
Knowledge

.. SOHM

vol. 0

280

Dürer's *Melencolia I*: The Limits of Knowledge

From the s

id e
urer's *melen*

from

enth-

¹ Or
1520

erlands in 1520, D
t eight in-
: *Schriftliche*
15, Anton
to the letter
er, Apr. 5,
Alia I measures 24.0 x 18
orace Gallatin Coll
B-15,223.

dated 1514
the artist's
cant than
Melencolia

other

medic
er Dürer des
ains most but their
in I cogi
W ions
ne 1 insc

assoc
gravit
iation in
gnifi
r, the
lity of

1520
cm |
Nat
² Fo
depi

cription of Melan
lin, "Zur Interpret
unstwis-
iography on
ere, much le
utions 1971 are in-
Dürer-Diographie (Wirc
ith the exception of a
ig, alchemical inter
lencolia I," *Storia d*
erature appearing d
see W. Stechow, "R

ex
to the fru
bodied by
cular abod
be accident

rior

inuous study a
ncholy's rationalist
obj s sci rou
es 1 ont
oi 1 oly i)

nant f
ons, em-
epus-
ect to
riting

1520
den,
leng
by C
I [1'
the]

4): 259-270.
recently is b
Kunst als Be

an
necessarily
established
intellectual
Whereas
unprecede

the e

eed to remos
mised by P
er ded to ose ch
in ze o
hy is r
suspiou O f has

but n
can be
ities of
e, the
nar-

van
(Ber
³ Er
Dür
⁴ G.

enkschr
ch, R. Kraussnerr and E. "r
Life and Art of Albr
, I: 156.

ill
scientist Jo

an N

plato ic mel:
Christian paradox,

te to t
exhorta-

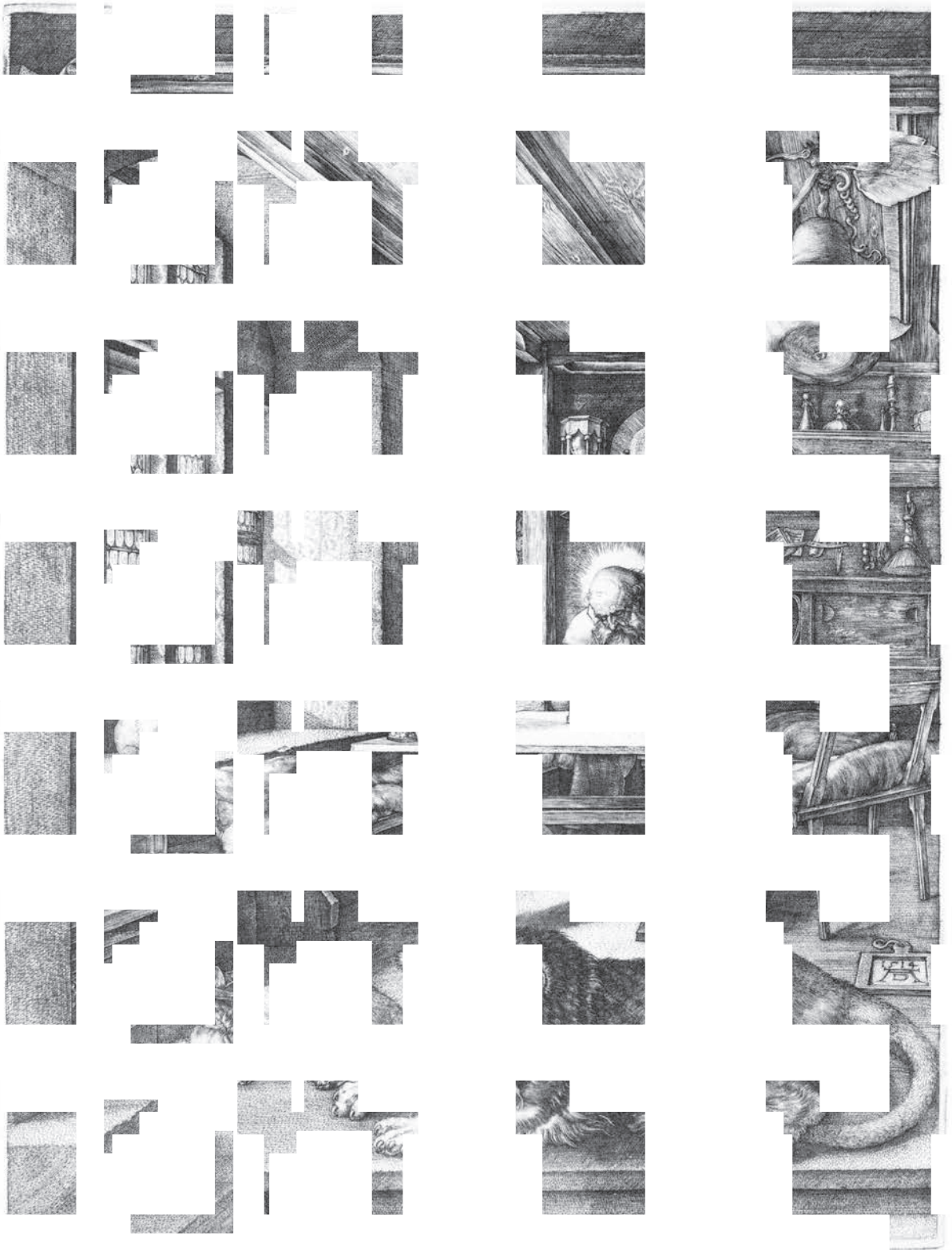
Ges

Warbur
und Bil
ers Zeiten"
Leipzig-Berlin, 1932). 5.



recht Di
n, R. Horace Gall

igravinj al Gallery of



F *Durer,* *in his Study, 151*
of Art, Was *ton,* *allatin Collection*

al Gall

53 Licht 199; R
 i. Wi
 r
 irers "Melancholie I" im
 es," *igo*, 145
 h, (rstickl
 mi y (960)
 -169

jur (1904)
 Haa
 sym
 (Re
 "Sinn
*vielfe*¹⁰
 10
 lungen" *er Gesel*
 it, 26 (1903): 29-41; 2/
 trit to M
 H. de
 er *z* I, i
 he n *ülle*
 i p; c *vård*
 D) *noet*
 icolia I" in G

F
 ne
 ch
 D
 y, E. Panorsky
 "Melenolia," 25
 S *Dür* *sticl*
 I *nges*
 (*erlin*
) *id R*

zum (Nurei and W)
 ipe, *Al*
 Gebi
 55 Talt
 r i n *phic*
 97 4 *hall*
 St. ? *y: A*
 II Reference,"

7. The n
 pera
 tige Lesung | zt
 Berlin, 1972), 10
 ee c *im*
 cki *hrift*

... sei 409-41
 en zu D
 Hur
 n
 chuster "Melen
 choliel... pferstic...
 as *Münster* 27 [1974]:
 co bat *vård*,
 414),
 ky 357.

9 F
 re t *as*
 K. s *und*
 ssenschaft. Zu

Melenc lia," 25

ist the fear of
 es.⁵
 dly the mo
 is that of Pa

ly as d
 elanchoy." Un
 olics, the m
 hievements
 urnine abilit

healing influ
 nean powe
 erring to hi
 rds of the a

Agri
 osophia, whic
 prior to it
 sformation
 ent acedia

very n
 ers of geom
 felly concludes
 mental facul

"this)
 ertain daemon
 men fall int
 as a result,
 ned gods ra

telanc
 1 to Agrippa
 - description
 grippa cou
 e suggested.
 r Dürer's M

prese
 ate of inspirati

to mention only a f
 ted and most p
 ncluded that Dü

thereb d a geomet
 e of Saturn, the pote
 ination could b
 ools and instr
 cholic in pure ge

magi e on the wa
 inchol, alismans us
 o offset the excess
 ans wealth," w
 er (or mastery)
 ometry.

etry, and n
 nan philos
 ind sp y to his D
 umes Dürer knew
 1531. Based
 rom its medie
 onic afflatus,

work ence inspir
 ronomers, architects, an
 lia imaginativa, e
 ed by Dürer wit

has su er that they
 es, through whose
 ronounce man
 outstanding by
 If the melanch

rtal thought
 r *divinus*,
 utes, c seem psych
 enius. the apparent
 with Dürer's im
 n Dürer's sour
 be established t
 ndeed experienced a

implied pa
 n that choly had e
 1 profundity to Jero

identical in
gloomy pr

THE INCDIR

ra
radius mea
one of the
thereby re
seems prol

a :
compasses
dron and t
identical le
the measur
another? W

de
transformi
engraving,
and polyhe
the symbo

with the ra
urement? I
quent depic
astronome

ep
the
fingers of
other. Unli
emphasize
them, anot

be
tions. God
the cosmos
and circun
ence, dupli

cu
cation its r

pp^oe des
itu

an f

feet at l to o
ner edge. While it m
pa s hi
ne r
er e

(the r easure
gth of the base (unc
fir glan
ler ;
iss
may have

which runca
regular nerp
su d
w s
co

cted h : publi
and to reconstruct
on ould
s tl l
e l
oa created

one r od as
repres nts hi
holding compass and
ire f
ve l
in l

arche /pe, fc
orative quatrolobe, l
he o pe
ar l
üi s
o this manu

t the a t of me
we s an accented fragm

l to the

l be a

inbov
cted that
gown
reless
ment

e of t
polyhe
is the
nsfer
on on
the

there
a in the
npass
ng to
nder

compa
s meas
e fre
nd of
e re

puca
with t
with the
either
using
God

llumin
phere of
enter
mfer
nly in

oy imp
contem

¹⁰ Fi
ron,
Dür
Fort

rmulation of the pi
chmals: Der 'Kri
t,'¹⁰ *Forschungen* 1
154-156; and Kliba

¹¹ Fi

er in 15-
1540), an
e liberation
illus. in G

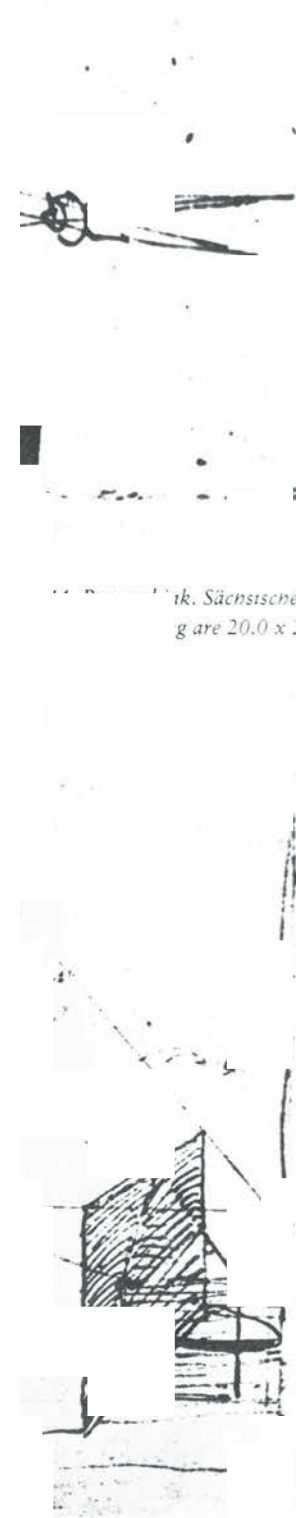
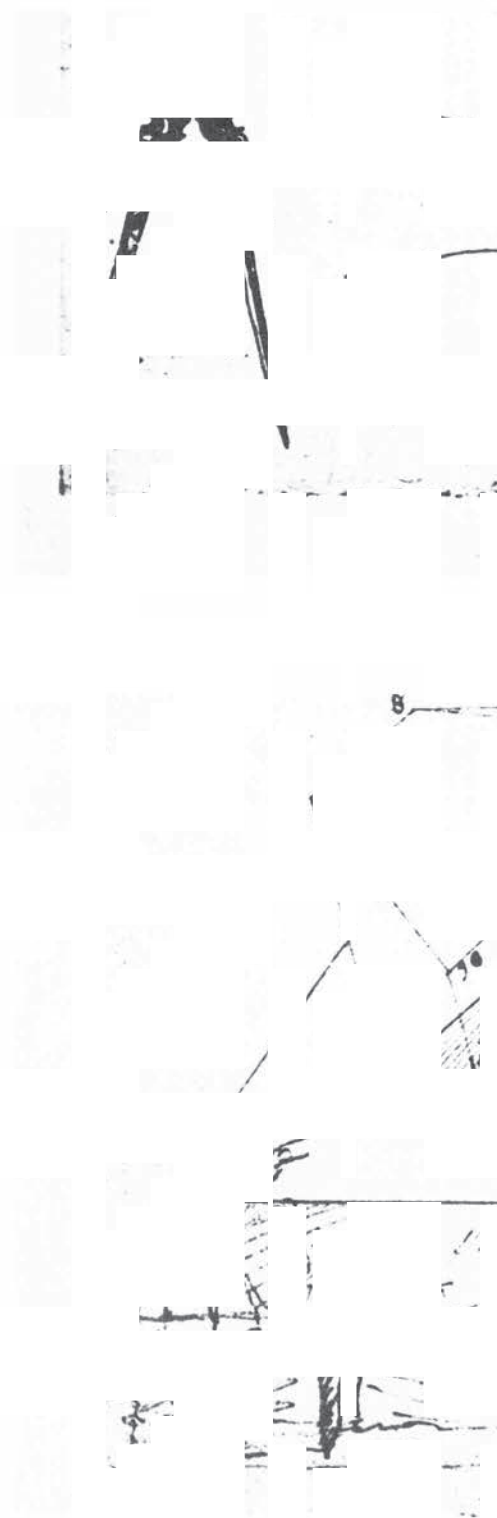
*Met
Mes
150
Hol
cuts*

venice,
zur Ges
914), 83; the title page of
otus orbis (Nureml
Dürer's circle (illus.
avings Etchings an
7: 257); and Corr

¹² K
"Th
of tl
419

omer, which
s. in *Hollste*
igs and
1).

arn, 338f.; J. B. Friedma
iss in *Creation Min*
s," *Traditio*, 30 (19



13. Pen and ink, Sächsische
gare 20.0 x 20.0

12. Dürer. Polvt

14. Pen and ink, Sä
gare 20.2 x 20.2

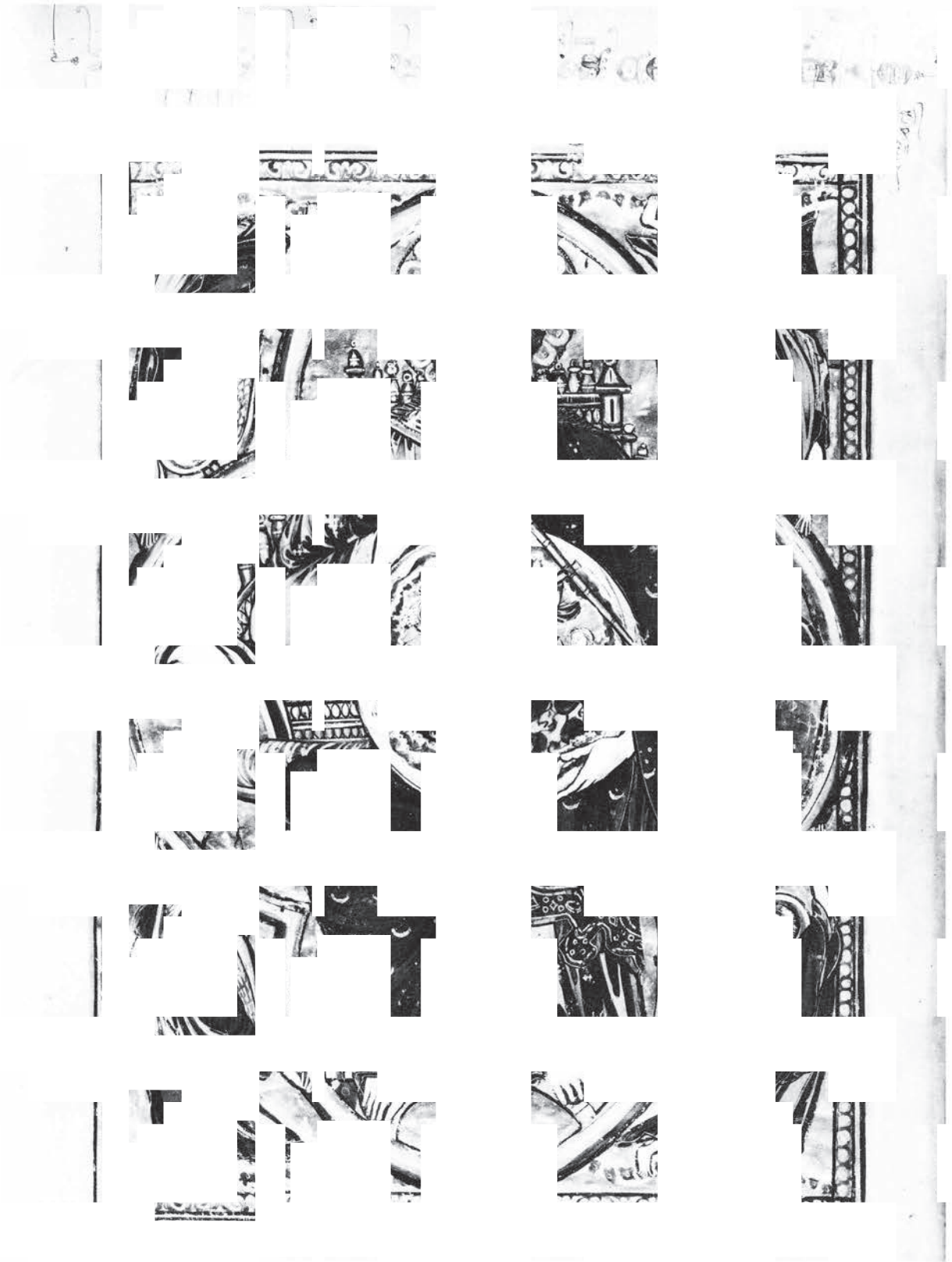


Fig. 1. Fragment of a manuscript page from the *Moralisé de Boèce*, fol. 270b, showing a scene with a figure and a compass.



Father with S
ria Scholastica

early 15th c. From
ndon, 15.D.iii, fol.

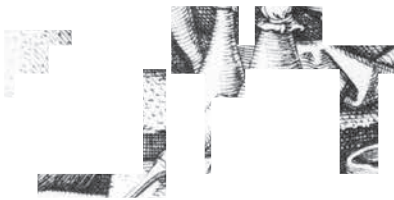
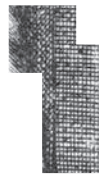
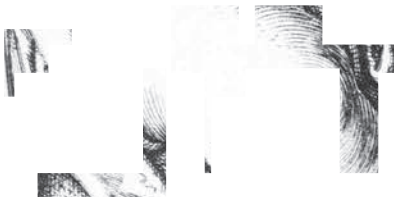


Fig. 1. *Wassengarten*, 1539.

Engraving, *senior*.

Art, 1539.

porary vis-
learned au-

en I t w
str t of

ed his
gaug-

7) woman
the distanc
The sim
bow in M
them, the

ly deriv ed fro
on top of a sphere v
po of pas
cal i mp
sig i catio
ug of me sp

a wing
is equal
rain-
ive at
nder-

in
pure geom

a sym
y.¹⁵
e earth of uns
ow has been interpi

z, and
e upper-

13 L
308
bel

15 A
Sinn
Kun

15 A
Sinn
Kun

15 A
Sinn
Kun

15 A
Sinn
Kun

15 A
Sinn
Kun

15 A
Sinn
Kun

15 A
Sinn
Kun

15 A
Sinn
Kun

15 A
Sinn
Kun

15 A
Sinn
Kun

15 A
Sinn
Kun

15 A
Sinn
Kun

15 A
Sinn
Kun

15 A
Sinn
Kun

15 A
Sinn
Kun

15 A
Sinn
Kun

15 A
Sinn
Kun

15 A
Sinn
Kun

15 A
Sinn
Kun

15 A
Sinn
Kun

15 A
Sinn
Kun

15 A
Sinn
Kun

15 A
Sinn
Kun

15 A
Sinn
Kun

15 A
Sinn
Kun

15 A
Sinn
Kun

15 A
Sinn
Kun

15 A
Sinn
Kun

15 A
Sinn
Kun

15 A
Sinn
Kun

15 A
Sinn
Kun

15 A
Sinn
Kun

15 A
Sinn
Kun

15 A
Sinn
Kun

15 A
Sinn
Kun

15 A
Sinn
Kun

15 A
Sinn
Kun

15 A
Sinn
Kun

15 A
Sinn
Kun

15 A
Sinn
Kun

15 A
Sinn
Kun

15 A
Sinn
Kun

15 A
Sinn
Kun

15 A
Sinn
Kun

15 A
Sinn
Kun

15 A
Sinn
Kun

15 A
Sinn
Kun

15 A
Sinn
Kun

15 A
Sinn
Kun

15 A
Sinn
Kun

15 A
Sinn
Kun

15 A
Sinn
Kun

15 A
Sinn
Kun

15 A
Sinn
Kun

15 A
Sinn
Kun

15 A
Sinn
Kun

15 A
Sinn
Kun

15 A
Sinn
Kun

15 A
Sinn
Kun

15 A
Sinn
Kun

15 A
Sinn
Kun

15 A
Sinn
Kun

15 A
Sinn
Kun

15 A
Sinn
Kun

15 A
Sinn
Kun

15 A
Sinn
Kun

15 A
Sinn
Kun

15 A
Sinn
Kun

15 A
Sinn
Kun

15 A
Sinn
Kun

15 A
Sinn
Kun

15 A
Sinn
Kun

15 A
Sinn
Kun

15 A
Sinn
Kun

15 A
Sinn
Kun

15 A
Sinn
Kun

15 A
Sinn
Kun

15 A
Sinn
Kun

15 A
Sinn
Kun

15 A
Sinn
Kun

15 A
Sinn
Kun

15 A
Sinn
Kun

15 A
Sinn
Kun

15 A
Sinn
Kun

15 A
Sinn
Kun

15 A
Sinn
Kun

15 A
Sinn
Kun

15 A
Sinn
Kun

15 A
Sinn
Kun

15 A
Sinn
Kun

15 A
Sinn
Kun

15 A
Sinn
Kun

15 A
Sinn
Kun

15 A
Sinn
Kun

15 A
Sinn
Kun

15 A
Sinn
Kun

15 A
Sinn
Kun

15 A
Sinn
Kun

15 A
Sinn
Kun

15 A
Sinn
Kun

15 A
Sinn
Kun

15 A
Sinn
Kun

15 A
Sinn
Kun

15 A
Sinn
Kun

15 A
Sinn
Kun

15 A
Sinn
Kun

15 A
Sinn
Kun

15 A
Sinn
Kun

15 A
Sinn
Kun

15 A
Sinn
Kun

15 A
Sinn
Kun

15 A
Sinn
Kun

15 A
Sinn
Kun

15 A
Sinn
Kun

15 A
Sinn
Kun

15 A
Sinn
Kun

15 A
Sinn
Kun

15 A
Sinn
Kun

15 A
Sinn
Kun

15 A
Sinn
Kun

15 A
Sinn
Kun

15 A
Sinn
Kun

15 A
Sinn
Kun

15 A
Sinn
Kun

15 A
Sinn
Kun

15 A
Sinn
Kun

15 A
Sinn
Kun

15 A
Sinn
Kun

15 A
Sinn
Kun

15 A
Sinn
Kun

15 A
Sinn
Kun

15 A
Sinn
Kun

15 A
Sinn
Kun

15 A
Sinn
Kun

15 A
Sinn
Kun

15 A
Sinn
Kun

15 A
Sinn
Kun

15 A
Sinn
Kun

15 A
Sinn
Kun

15 A
Sinn
Kun

15 A
Sinn
Kun

15 A
Sinn
Kun

15 A
Sinn
Kun

15 A
Sinn
Kun

15 A
Sinn
Kun

15 A
Sinn
Kun

15 A
Sinn
Kun

15 A
Sinn
Kun

15 A
Sinn
Kun

15 A
Sinn
Kun

15 A
Sinn
Kun

15 A
Sinn
Kun

15 A
Sinn
Kun

15 A
Sinn
Kun

15 A
Sinn
Kun

15 A
Sinn
Kun

15 A
Sinn
Kun

15 A
Sinn
Kun

15 A
Sinn
Kun

15 A
Sinn
Kun

15 A
Sinn
Kun

15 A
Sinn
Kun

15 A
Sinn
Kun

15 A
Sinn
Kun

15 A
Sinn
Kun

15 A
Sinn
Kun

15 A
Sinn
Kun

15 A
Sinn
Kun

15 A
Sinn
Kun

15 A
Sinn
Kun

15 A
Sinn
Kun

15 A
Sinn
Kun

15 A
Sinn
Kun

15 A
Sinn
Kun

15 A
Sinn
Kun

15 A
Sinn
Kun

15 A
Sinn
Kun

15 A
Sinn
Kun

15 A
Sinn
Kun

15 A
Sinn
Kun

15 A
Sinn
Kun

15 A
Sinn
Kun

15 A
Sinn
Kun

15 A
Sinn
Kun

15 A
Sinn
Kun

15 A
Sinn
Kun

15 A
Sinn
Kun

15 A
Sinn
Kun

15 A
Sinn
Kun

15 A
Sinn
Kun

15 A
Sinn
Kun

15 A
Sinn
Kun

15 A
Sinn
Kun

15 A
Sinn
Kun

15 A
Sinn
Kun

15 A
Sinn
Kun

15 A
Sinn
Kun

15 A
Sinn
Kun

15 A
Sinn
Kun

15 A
Sinn
Kun

15 A
Sinn
Kun

15 A
Sinn
Kun

15 A
Sinn
Kun

15 A
Sinn
Kun

15 A
Sinn
Kun

15 A
Sinn
Kun

15 A
Sinn
Kun

15 A
Sinn
Kun

15 A
Sinn
Kun

15 A
Sinn
Kun

15 A
Sinn
Kun

15 A
Sinn
Kun

15 A
Sinn
Kun

15 A
Sinn
Kun

15 A
Sinn
Kun

15 A
Sinn
Kun

15 A
Sinn
Kun

15 A
Sinn
Kun

15 A
Sinn
Kun

15 A
Sinn
Kun

15 A
Sinn
Kun

15 A
Sinn
Kun

15 A
Sinn
Kun

15 A
Sinn
Kun

15 A
Sinn
Kun

15 A
Sinn
Kun

15 A
Sinn
Kun

15 A
Sinn
Kun

15 A
Sinn
Kun

15 A
Sinn
Kun

15 A
Sinn
Kun

15 A
Sinn
Kun

15 A
Sinn
Kun

15 A
Sinn
Kun

15 A
Sinn
Kun

15 A
Sinn
Kun

15 A
Sinn
Kun

15 A
Sinn
Kun

15 A
Sinn
Kun

15 A
Sinn
Kun

15 A
Sinn
Kun

15 A
Sinn
Kun

15 A
Sinn
Kun

15 A
Sinn
Kun

15 A
Sinn
Kun

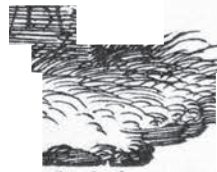
15 A
Sinn
Kun

15 A
Sinn
Kun

15 A
Sinn
Kun

no Chy
bergenfi
nibus Fr

erto Dui
rij generis ca
fi Chelidoniij



no lat
) cessa culpis
Cum

el ista
nouis,
D.

at Dürer, Man

1511. Woodcut. Th

Se
gr
72

rainbow as h

ie und
6-42
e
F

rainbow as h

Se
josi

avenly
e after the Flo
powers.¹⁶ H
w are prop
ther than s

the La
of the celestial
-artis and is st
ld then asst

ence to the

have u
Reuterswärd h

leopla stem, as a
idication of the mel
is recognized th
d and should b
erent context is

here maint
footstool i
terpre of the rainb
implied by the Latin design
in his eighth Hom
onal meaning a

s echoed by the
by the tools
ls scattered
o defir alm of Mel
coexisting substratu

dimus, omoc licet spiritum videmus”
 (“But e itic o the lf of
 the r tel; l how
 abe i ir”).

Reuterswärd,

²⁰ H. vo inem n, Dürer's "Melancholia I,"
 Print th 35- asso pose
 of Meli 's; ii ltar-
 piece wo a Pas-
 sion th hri i : en-
 g. J. A. Endre

ious o elenc; di e few o er inter
 that maor n a stian allegory suggests
 could r f t dding up four
 use il rier; Pas-
 here.

traam (194⁴¹) is of We ld Harn
 en h-81 Au mte elpu t. r. art,
 1966) A. D e kka t im
 Mittela), . ave
 becon th d riety
 ly) t r. d
 (Augsburg. T)

²² Otto v oth a lon,
 195 G l um
 Pri on 2 pro-
 is und Zant in

His point of de
 erved on th
 this image
 hat the obje

to be all
 it may refer to
 time it can se
 he earth co
 depicted as F
 lder refer n

ve bee
 biect and the M
 the interpre
 alm of *mel*
 ld seem to l

d on,)
 returned to.
 ere and rain
 to the ear
 al relation

inbov,
 ilood (Genesis
 inbow is a
 it could ser
 r of the uni

strate
 gifts, as Panc
 measure o
 by incorpor
 e universe

y, reia
 ght to be the c
 could be trans
 nded to do
 ancholy's lof
 asuring the

sted by
 iverse creating

observation that a s
 ie polyhedron.)
 f less importan
 Melancholy m

he hour gla
 d noted tha
 of tim erefore to
 'c's forecasting abili-
 ' of death. The
 d with the ima
 e base. The nail
 and fortune in gener

lancholy h
 ese images
 atical Dürer's wo
 zory (figs. 8, 9).²⁰

ols and instrum
 itiva and of the
 usive, it can be

single objec
 e reconcile
 e sphe ow relatio

to the Last Ju
 e arch of Heav
 them probabl

n, or micro
 ie implicat
 within the r
 od's sig oventant to
 inly the one to thre
 tion of Pythagi
 nbol for the gre
 n be accepted,

ens, Melan
 omet; hus confirm
 d. Presumably, Me
 pply it to her a
 rinciples used by
 nber and weigh

ent tone ac
 ally, that is
 mis re: isical propo
 izational principle of th
 itecture, as Melan
 estrial model o
 e confirmed by t
 nular images of

re with cor
 ceptic n as the arc
 naos, by means of

During the
verted so
This inve
humanism

Renaissance
the metaphor of God
also
so
ed

er was in-
divine.
age of
ought

tl
geometer
may be se
Agrippa's
Yet, des

the mediaeval
holy. Thus, in this
God
asp
oy is repres

f God
elancholy
tion of
al har-

Dürer wrote:
held in high
hundred year
outstanding artists rich a
nction because they
in equality with Go
inter is inwardly fu
sible for him to live
forth someth
lato writes."

W
pursuit. A
erally rec
revolves a
inevitably

may be known
to Dürer
in the introduction
ogra
mel
in th

uemic
scient
ave gen-
olia I
which
divine

H
to Henric
and hence
ble reality
become sc

and the vo typ
able to handle met
gi, wh
ts a
enc
isce

accord
concepts,
cepti-
ited to
quan-

disillusion
beauty
rlin, 1915],
s such passa
as "With regard to geo
ain things are true,
ave to the opinion
r Dürer felt a comp
etry in the earlier y

ve
be
In the s
neglected-
medieval
earthly nu

for the / can
imp
s. B
ver
hed

thoug
has been
ion of
f most
tradi-

out question
e, the *Under
tel und
ring these ye
concerning
t is expressed in a note v
later than 1513: "i
manigfaltiger weg
kunst der malerey
rei vnd arithmetica
ler ander kun
eodesia,
ass, 2: 127.*

ar
Nicholas
infinite an
intellect, u
any propo

ulate durin
n, or knowledge of
ra in
ds,
cou

ntury
Dusa was
o any
ble by
ached

sa, which also deri
ll and the Brethren
traced back to Pseu
and utimar
sdom of this
thians 3:19)

ra
wisdom be
knowledge
modeled h
Luther. "7

ned in
ppreciate the mystic
link
tra
d in

id ign
of divine
orldly
ch he
artin

as of C
345-36
rchenfürst zwischen M
h, 1968), 276-292.
norata, 9-10; see al
and the Commens
al Motions,"
i, 1 (1961):

th
they are w

ise me, yet tl
...lom of secret hidden

fools, I
it of that

Wervſ n
Vnd dar j
Der Bist



Wervſ n
Ich halt
Der all

bastian Brant, Na

e found in a
oncerning t

e nepr
im, and a aus
scepticism
ther fields c
rrhonists qu
t be based o

uths b
na.³⁰

vnd mer
reüd/vnd ler
man mer



Gauer lar
el wif
vnd ſyn flif
vnd lante

it

194), chap. 66

The shattering c
Church were pa

is leaders b
Pico della M
Giovanni Pico, Agripp
29 Whereas Cusa and
ology, with occasio
ay of compariso
dity of all huma
ences. This positio

l the assum
standing e
xt of quan

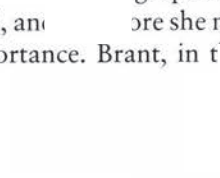
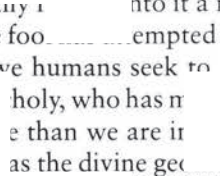
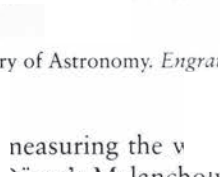
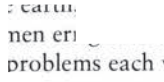
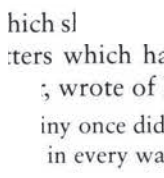
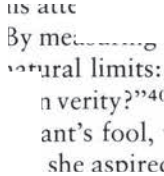
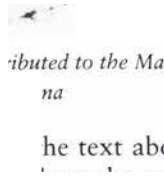
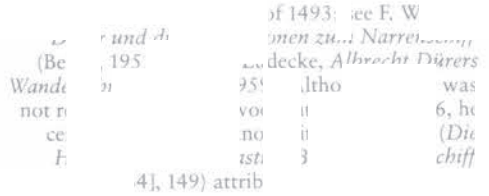
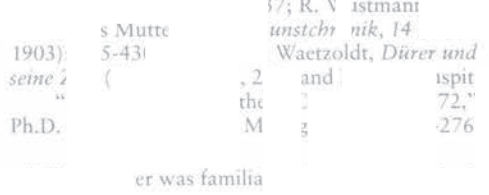
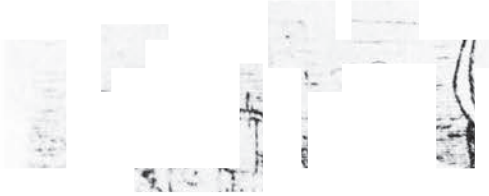
limite

Pa
ch
leit
inl
eff
affluentials are

Popki
D
A
Gi
their it as, see
criticism from Erasmus to
50
25;
sis
ough
hmit
153.
1007
unique of exis

the cor
e sign
decept...n of the
at least two physicians of

As a p applicati of scient fessions (sci one of the liberal ar y l gu tl	bec wo mi	rv and its e image s Con- meas-	th M of pe (L	Leonard Fuchs and s, observed that thi result in unreliable s bs, <i>De curandi rati</i> hans, 29-34; and L. York, 1941).
fouly is a p sun, moc introduce tiarum et	isan s applicabili	of me are o frame countless wo sh s as De ut	ows. T easure the grippa scien- reason	32 de 19 A)	ise of P 4-95. y of Arts and Scienc Agrippa, <i>De incert tium et actum li</i> 22: "Ea tamen est unquam an- quid quam cipos in tan rae elleboru metria ultra
u davo, Ag go about they run t Hellebor	armtu pa w ne su is	even p mung ssage calling therefore ne su is	vain s de Gu etricians) perfect, all the o and	33 tri (N St	andola, <i>Examen va tis Christianae, di</i> ap. 16; Perisauli, <i>Ti cometra Delirus</i> " a athias Gerun picts a geog- e with comp h the inscrip
ii ideas, at sceptics, ³ taken a m experienc	st in ter tu inc ption of the	it appe r unlil rious depreciatory his h of art	ared th about the t have 514, an influ-	34 sp ni 35 El wi	ork as l. FNLI, riar lz Baetzen 4artlaub, <i>Giorgiones</i> 27). In a slightly l 8, Heinrich Vogth omer posed melanc I identifies the sour ung der Zeit chnung ist i h verwandt"
c h assemblec fame, rich theme—tl sixth char	is an it con m en	uctua r yrr source for Dis n of vain dg m en	seems I.36 Brann asures, rimary sixty- nity of	36 Th 37 de (N	The C ngle-Leaf New York, 1974], 4: 1 ughel's drawing an ns to be indulging re those around him ngen Pieter Bruegl 63f and I. Zapnic Folly" in 1971), 91-100 f the as-
tc heaven, ea a fool to b more com I do not de	1, an 13 7 tries	reme f the is seeking lore or gai inq es e	measu n beware eme in	38 39 40 ku ku	g the hi comparis iding of the geographer, y of that discipline, müt kan zw solcher i, warheit vnd weis nit gar awsgeschlo ng unser ver- so mügen w suchen, lern vnd do ten, Wir wis av kuns. vn jr warheit s vns zw gur kumt. Dor mensch nit versawn eren, dortzw er siel ich menschen müg iber daz ist nit eine
A T How broad How deep What hold The wood	ie mav e ear f men muodt	id de or and vnd s e he f	cons ns to advice by	41 42 43 44 45 46 47 48 49 50 51 52 53 54 55 56 57 58 59 60 61 62 63 64 65 66 67 68 69 70 71 72 73 74 75 76 77 78 79 80 81 82 83 84 85 86 87 88 89 90 91 92 93 94 95 96 97 98 99 100	sch so grob, n sein gemüt lachlass, 2: Grundlagen zur Kunst, Zeitschrift für 2-29; and G. Weise, <i>Die</i>



ler 9 nger

1903); seine 2 Ph.D. 1953; R. V. astman unstchr nik, 14 Waetzoldt, Dürer und 2 and ispit the 72," M 3 -276

und 1953; (Be Wande not r ee F. 1953; of 1493; see F. W men zu... Narren... decke, Albrocht Dürers 1953; litho was voi it 6, he no it (Die ist 3 chiff 4], 149) attrib

the i... Droi out sub ety, Brai f Dürer s work, in par- tox has been discussed

ributed to the Mas na

he text abc

us auc By me... natural limits: n verity?"⁴⁰ ant's fool, t she aspired

hich sl ters which ha ; wrote of l iny once did in every wa

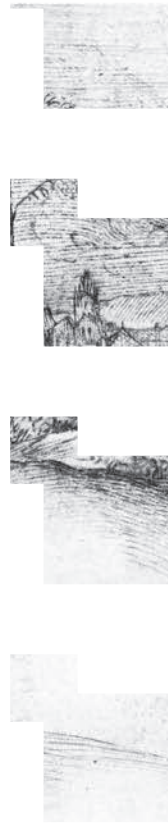
en eri problems each v

ry of Astronomy. Engra

measuring the v lanchoiy. tes the foll nto it a me he foo... emptied to ve humans seek to holy, who has n e than we are ir as the divine ge

h geometr grapher, en id, an ore she neg ortance. Brant, in t

Yet can he We never l To study r No one his	derst " t b no low comes a	cu? ... t b ... no low comes a	by "M 37 ten (Ti	1-72); see also Hoffman 2f. <i>Studien zu Neidhar satirischen Schreib 328. esp. 227f.; and sur les genres n Allemagne</i>	
fi to underst nize her o by Agripp hypothesi	d th i lu	arth, beyond means of geometry, the e al ed b T t co lu of v	y seek ot recog- d later wärd's ality in	Yo me Br 65. 39	<i>Book of Foli</i> E. Zeydel er vsz misszt hymel, erd, dem narren wer"; F. Zarncke (Leipz 1. Zeydel used the ged it to com iontext. Bran
a defined. T important a past sta Agrippa's	ang th abs b ne oli	but w a past and pr ools, the unfinished ure eady s of	ancio ivoca nd, most idicate d with he bat	De Wi Vn Da Wi Wi	it jtel w vnd syn tusz vnd landt in die handt atet werd e witt die erd zieh das mer lane knowle
re quence of dramatic choly's m state depi	me r formation	pecifica ly the contained in the er if uses ran ec e the av peci	. The uggests a Melan- jected ime in	me Br 41 Pli	to. "Was ... doch eym such grössers dann er sv' . 24; and <i>Narrenschi</i> t
o generally sion is co The cor tune, can <i>Melencoli</i>	umed yod as a remad	ney acquire the significance y me na as a remad	ince tr 's depre nisfor- text of raving	Da Vn Vn Wi Vn	under d vernur rächen allzyt rächen nitt, nutz entspring ohe ding des kennt . may be able ed, but the f nowled grave: such yride, withdraw from Th They foretell an ecl but they do not see ow occurring"; see (trans. A. Outler na relies on the san to arrive at a rippa, <i>De V</i>
sl early sixt tronomer 12). ⁴⁵ Wh adequatel	th n awareness	n una tribute man distracts the lu part ion ne i graj s s r i coi	ng of of an as- et (fig. not be arthly	me an sur ecl fes sh	may be able ed, but the f nowled grave: such yride, withdraw from Th They foretell an ecl but they do not see ow occurring"; see (trans. A. Outler na relies on the san to arrive at a rippa, <i>De V</i>
tr the rome earth, and presumab fools corr choly ide	labo- e: will be	a wis fool v ng to the woras w hu bew: ol t th n ontr cc s of will be p	futility s heaven, verse e two Melan- ly that	Ste Ku un "N 44.	rv in th ng, see also M Beiträge zu Albrecht Dū a P von 1514," <i>For</i> 958): 251; and Schi . in see Hoffmann, "
tv internaliza	repres the c	onflict ng mc by transforming Br	ge, Dū eter from	M	onrat, <i>The netian</i> the 15th an w York, 34, A575; B. ngs by Titian: some attri



nd ink. Städte

st, Fran

trions, 19 [anc
 201

46 Res

VI
 eit rum setz sy
 dut, vff yttlich
 leste nüt anders me
 yn i, jni ogen
 TV
 TV
 :ec ful.

expressions of

sheit an ranc.
 ise kurse zit
 i) e git
 h)
 it
 if i
 2F3

Albericus

tribu-
 nus W
 ode and Albertus
 Reuiss
 Caetan

ent of man'
 : limitations
 comet serve

acts as
 addition, Sebast
 f men who
 fame.⁴⁶ The
 al role of al

thus tl
 more than an
 were built li
 ingly contra
 fectly with
 lished in 16

n tow:
 v of that quest

into a compellir
 memento mori, the
 ns Melanc
 ns and, sin
 le pur: lowing an
 the rainbow as a me
 nly with the ma
 particularly a
 choly's illusory

nized as ne
 at is, an il
 usion celestial or
 reveals to melancholy th
 e air.
 of the rainbow
 ysis of the engr
 Camerarius, Durel s

nberg. Acco
 bolized bo
 ute tru at the sam

m; ne fleug
 rle
 re; i
 in; t
 (170)

of the saturn
 sly the ligh
 the duality
 nhol itself.

flies in fear of the
 means of salvat
 's symbols can l
 melancholy's prof
 ach object,
 ives the t

nann, A *lancho*

ion of

icholy

56] conc
 popu
 cation
 F
 of Symbolic Im

E

Hoffman, and
 mous *Vexier*

urgent i
 a single picture.

R
 1873
 1873
 1873

mon c
 e fea
 51
 355

58] J. P.
 ribed the effec
 Gre

veniam
 e praed ationis
 entium, e Domino par
 centu.