



Printing Defaults vs. Printing Preferences vs. Printing Properties:

What to watch out for when changing settings

ThinPrint

White Paper



Printing Defaults vs. Printing Preferences vs. Printing Properties

Introduction

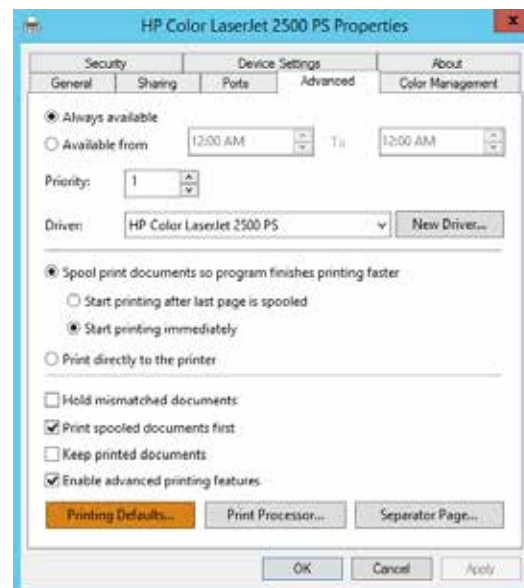
The look of a printed document is determined by the application creating the print job and the printer queue rendering the print job. Microsoft Windows allows users and administrators to set certain properties for printer queues like paper formats, orientation, trays, etc. through the Settings GUI of the printer driver. However, there are three ways to get to the Settings GUI and each of them has a different effect.

Printing Defaults

When opening and making changes to the Settings GUI via the "Advanced" tab -> "Printing Defaults", the default settings of the printer queue are being read and written. These settings are stored in the registry under:

HKLM\SYSTEM\CurrentControlSet\Control\Print\Printers\[NAME OF QUEUE]\Default DevMode

They determine the settings of all print jobs that pass through this printer queue as long as no Printing Preferences or Printing Properties have been configured by the user. Since changes to the Printing Defaults impact everyone using this printer queue, they can only be modified by an administrator account.



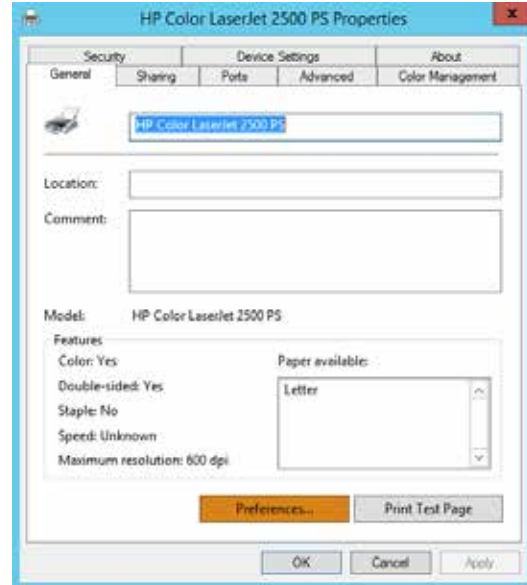
Illus. 1: Printing Defaults

Printing Preferences

When opening the Settings GUI via the "General" tab -> "Preferences", the current user can configure his own preferred settings for the printer queue. These Printing Preferences are initially the same as the Printing Defaults. However, as soon as the user saves any changes, a user specific configuration is saved in the registry.

For local printer queues the information will be stored in:
`HKCU\Printers\DevModePrinterUser\{NAME OF QUEUE}`

For network printer queues the information will be stored in:
`HKCU\Printers\Connections\,,{NAME OF PRINTSERVER},{NAME OF QUEUE}\DevMode`

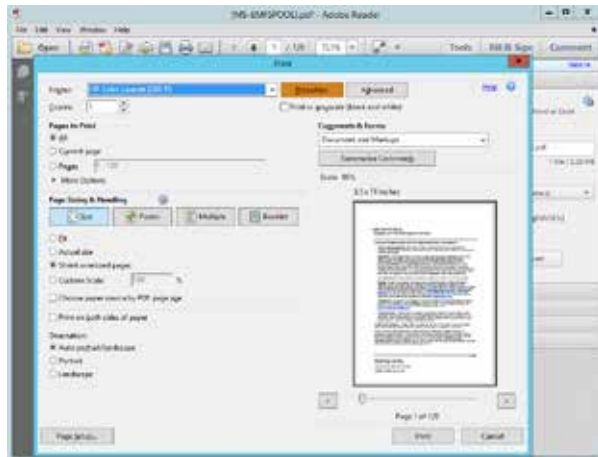


Illus. 2: Printing Preferences

As long as a registry value for the Printing Preferences exists, the Printing Defaults for this queue have no effect for this user.

Printing Properties

Opening the Settings GUI via the Printing Properties button of an application allows users to make changes to the settings which only apply to print jobs from this one application. The configuration is held in memory and discarded as soon as the application has been closed. The first time a user opens the Printing Properties, the system shows the settings configured in the Printing Preferences for this user and queue. If no Printing Preferences exist, the Printing Defaults are presented.



Illus. 3: Printing Properties

Implications

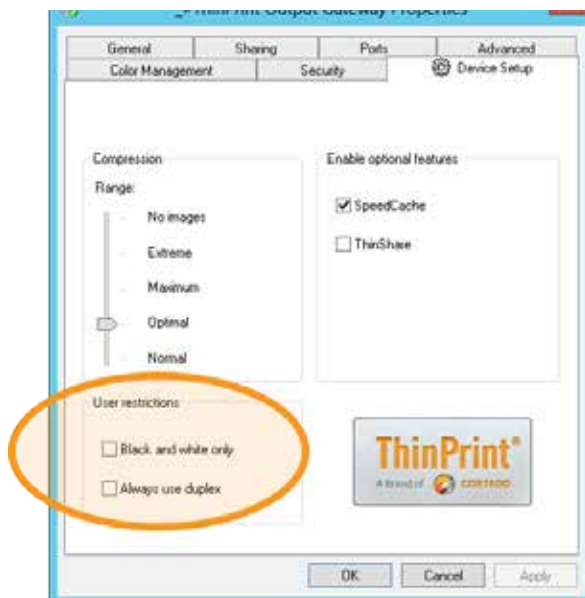
As a result from these three types of printer queue settings, an administrator can define the default settings new users use, however, the administrator cannot update the settings a user uses after the user has made changes to the Printing Preferences. The only way to apply new Printing Defaults to everyone is by deleting the Printing Preferences values from the HKLM hive. Users can configure printer queues the way they prefer by creating their own Printing Preferences. Applications will look for the Printing Preferences before applying Printing Defaults. However, Printing Preferences as well as Printing Defaults are superseded by application specific Printing Properties.

	Scope	Location	Availability
Printing Properties	App specific settings	In app	Resets with closing of app
Printing Preferences	User specific settings	In HKCU	Tied to availability of User Profile and persistency of shared printers
Printing Defaults	Queue global settings	In HKLM	Persistent

Illus. 4: Overview of Printing Properties, Printing Preferences and Printing Defaults

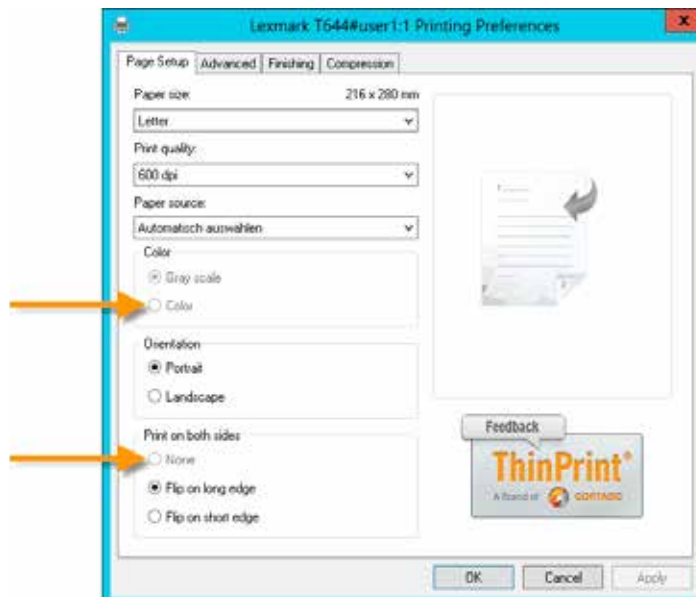
ThinPrint User Policies

ThinPrint's virtual printer driver ThinPrint Output Gateway gives administrators the option to define user restrictions. A specific User Restrictions group offers the options Black and White Only for presetting gray-scale printing and Always Use Duplex for printing on both sides.



Illus. 5: User restrictions in the lower left of the ThinPrint Output Gateway

As a result, the respective options will be **grayed out** for users. See the arrows pointing to the options Color and None – for printing on both sides.



***Illus. 6:** Greyed out options*

Printing should always be simple and user-friendly. That's why ThinPrint provides all users with a standardized and clearly laid out print dialog box for all environments and every printer. It lets users find the desired print function immediately – including finishing options such as hole-punch, staples, and binding and other enhanced functions.

About ThinPrint

ThinPrint technology is based upon more than a decade of experience and has proven itself with tens of thousands of companies – regardless of their sector, size, region or even their existing IT infrastructure. The print software significantly eases the strain on the IT department and increases performance, optimally supports printing, and enables lucrative cost savings in any environment. Whether convenient management of printer drivers, full control of the print environment and performance, or automatic printer allocation – print management has never been as easy as with ThinPrint.

Additional white papers or questions:

You can download this and many other white papers on relevant IT subjects here:

www.thinprint.com/whitepaper

What customers think of ThinPrint?

Independent, third-party research on how customers view ThinPrint products can be found at: www.techvalidate.com/product-research/thinprint

Any questions?

The ThinPrint experts are happy to help. Contact us via one of our local offices listed on the next page or send an e-mail to info@thinprint.com.

.....Headquarters.....

ThinPrint GmbH

Alt-Moabit 91 a
10559 Berlin, Germany

Tel.: +49 (0)30-39 49 31-0
Fax: +49 (0)30-39 49 31-99

E-Mail: info@thinprint.com
www.thinprint.com

Cortado Pty Ltd.

Level 12, Plaza Building,
Australia Square, 95 Pitt Street
NSW 2000 Sydney, Australia

Tel.: +61-(0)2-8079 2989

.....Australia.....

.....USA (Colorado).....

Cortado, Inc.

7600 Grandview Avenue, Suite 200
Denver, CO 80002, USA

Tel.: +1-303-487-1302

E-mail: info@cortado.com
www.cortado.com

Cortado Japan

20th Floor, Marunouchi Trust Tower Main,
1-8-3 Marunouchi Chiyoda-ku,
Tokyo 100-0005

Tel.: +61-(0)2-8079 2989
Fax: +81-(0)3-52 88 53 81

.....Japan.....

ThinPrint®

All names and trademarks are the names and trademarks of the respective manufacturers.

Follow ThinPrint:

