



PGCPS

Special Education Updates

SECAC Meeting

September 27, 2022

Trinell M. Bowman, Associate Superintendent-Special Education



PGCPS PRINCE GEORGE'S COUNTY BOARD OF EDUCATION

Juanita D. Miller, Ed.D., Chair

Sonya Williams, Vice Chair/District 9 Member

David Murray, District 1 Member

Joshua Thomas, District 2 Member

Pamela Boozer-Strother, District 3 Member

Shayla Adams-Stafford, District 4 Member

Zipporah Miller, Ed.D., District 5 Appointed

Vacant, District 6 Member

Kenneth F. Harris II, Ph.D., District 7 Member

Madeline LaSalle Frazier, LCSW, Ed.S., District 8 Appointed

Vacant, Member

Judy Mickens-Murray, Member

Curtis Valentine, M.P.P., Member

Alvaro Ceron-Ruiz, Student Member

Monica E. Goldson, Ed.D., *Secretary/Treasurer and Chief Executive Officer*



PGCPS DEMOGRAPHICS

PGCPS is one of the nation's 20th largest school districts in the United States and the 2nd largest school system in Maryland.

STUDENT DEMOGRAPHICS

- Black or African American: 72,830 (55%)
- Hispanic/Latino of any race: 47,999 (36%)
- White: 4,836 (4%)
- Asian: 3,637 (3%)
- American Indian/Alaska Native: 381 (.3%)
- Native Hawaiian or Other Pacific Islander: 264 (0.2%)
- Two or more races: 1,728 (1%)
- English Language Learners: 21%
- Special Education: 11%
- Free and Reduced Meals: 66%

ANNUAL BUDGET

\$2.3 billion

SCHOOLS AND CENTERS

198

STUDENT ENROLLMENT

131,657

EMPLOYEES


22,000



PGCPS

New Special Education Parent's Page!

<https://www.pgcps.org/offices/special-education/special-education-parents-page>

		
Department of SPECIAL EDUCATION PRINCE GEORGE'S COUNTY PUBLIC SCHOOLS		
Phone No. 301-618-8355	Fax No. 301-925-1961	Reports To: Chief Academic Officer
Special Education		
Trinell M. Bowman Associate Superintendent for Special Education trinell.bowman@pgcps.org		
Jennifer Williams Administrative Assistant jen.williams@pgcps.org		
Compensatory Education / Recovery Services Overview		
Special Education Parent's Page		



PGCPS

Relationship Development Intervention (RDI) Parent Group

- RDI® programs teach parents how to guide their child to seek out and succeed in truly reciprocal relationships, while addressing key core issues such as motivation, communication, emotional regulation, episodic memory, rapid attention-shifting, self-awareness, appraisal, executive functioning, flexible thinking and creative problem solving.



RDIconnect™



Guiding
Exceptional
Parents

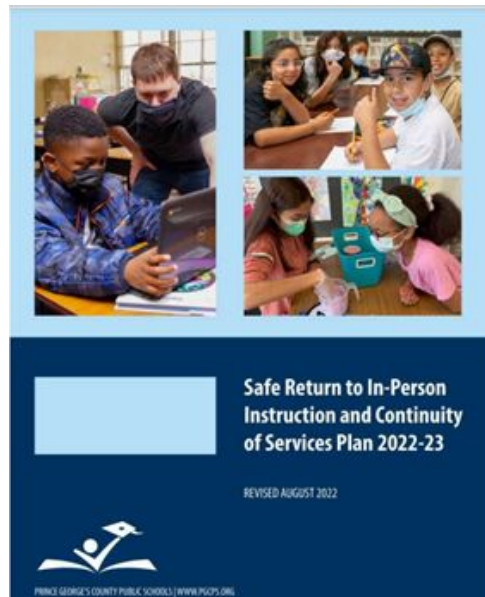
- The Department of Special Education has entered into a partnership with Guiding Exceptional Parents to continue facilitating our Relationship Development Intervention (RDI) Parent Groups. Dr. Sarah Wayland and Ms. Betty Adkins will serve as RDI parent group facilitators.
- Our RDI parent groups for the 2022-2023 school year will be held on the first and third Tuesday of the month, 5:30 p.m. - 7:00 p.m.
- We will host a parent information session on October 18, 2022. **To register for please use the link below: [Registration Form Parent Information Night](#)**



PGCPS

In-Person Instruction Plan

- Prince George's County Public Schools (PGCPS) has prepared for a full year of in-person instruction for all students for school year 2022-2023.
- The PGCPS In-Person Instruction and Continuity of Services Plan can be found here:
<https://www.pgcps.org/reconnect-pgcps/safe-return-to-in-person-instruction-and-continuity-of-services-plan>





PGCPS

PGCPS Strategic Plan

The PGCPS Strategic Plan:

- Communicates the district's mission, vision and core values, signaling to PGCPS stakeholders the district's priorities and what it values;
- Serves as a blueprint, setting outcome-oriented goals to raise district performance in key areas;
- Outlines the strategic imperatives that will enable the district to carry out adaptive change;
- Shares how progress will be measured and monitored along the way; and
- Describes the common framework our staff will utilize to ensure a coherent, collaborative and equitable approach to transformation.



<https://www.pgcps.org/about-pgcps/strategic-plan>



PGCPS

Department of Special Education Strategic Plan

School Year 2022-2023 Strategic Focuses



Implement a tiered systems of support framework for PGCPs pilot schools based on established data metrics that provides a school with customized differentiated support that varies in intensity and frequency.



Rethink how PGCPs provides services to students with disabilities with a keen focus on students with autism, social-emotional, behavioral, and specific learning disabilities by leveraging community partners to maximize staffing resources and strengthen service delivery models.



Identify evidence-based strategies for students with disabilities to be incorporated into the district mathematics curriculum frameworks to ensure access to the general education curriculum with a professional learning and coaching plan.



Develop a monitoring system to evaluate the quality of service delivery models and programs for autism, social-emotional, and specific learning disabilities.

Opportunities to Resolve Challenges

Reduce the number of students with disabilities in self-contained classrooms by increasing opportunities with non-disabled peers.

Continue to address compensatory education/ recovery services decisions for remaining PGCPs students impacted due to COVID-19 school closure. **As of 9/1/22 2,444 students decisions remaining. Over 19,000 had to be reviewed!**

Continue to address the completion of reevaluation assessments that were backlogged as a result of COVID-19 school closure. **As of 9/1/22 363 reevaluations are overdue.**

Increase the number of students with disabilities enrolled in Career Technology Education Programs.

Special Education Strategic Plan



An update regarding progress of the Special Education Strategic Plan will be released on the PGCPS soon!

Special Education Resolution Team Contact List

Who to Call:



 SY 2022-2023 Resolution Team Contact List		
Problem	Resolution	Contact Information
Parent has questions regarding student's placement, program, Autism, and/or the Individualized Education Program (IEP)	Contact the Office of K-12 Instruction to contact the appropriate supervisor SEIS Assignments Camille Johnson, Coordinating Supervisor for Instruction Tameka Wright, Elementary Instructional Supervisor Toni Brooks, Secondary Instructional Supervisor Vacant, Instructional Supervisor, Special Programs Vacant, Assistant Supervisor, SEAD Program	301-702-2890 Camille.johnson@pgcps.org Tameka.hinton@pgcps.org Toni2.brooks@pgcps.org
Parent has questions regarding procedural concerns with the IEP process or implementation	Contact the Compliance Office Dr. Barbara Van Dyke, Compliance Supervisor To find your child's assigned compliance specialist for their school, please click here : Aleia Johnson, Compliance Specialist Keith Marston, Compliance Specialist	301-618-8355 Barbara.vandyke@pgcps.org Aleia.johnson@pgcps.org Keith.marston@pgcps.org

[SY 22-23 Special Education Resolution Contact List](#)

Contact Information

For additional information, please contact:

Trinell Bowman

Associate Superintendent for Special Education

trinell.bowman@pgcps.org

301-618-8355