



PGCPS

Health Services Updates SECAC Meeting

Traci Jones
Supervisor, Office of School Health
September 27, 2022

Today's Goal



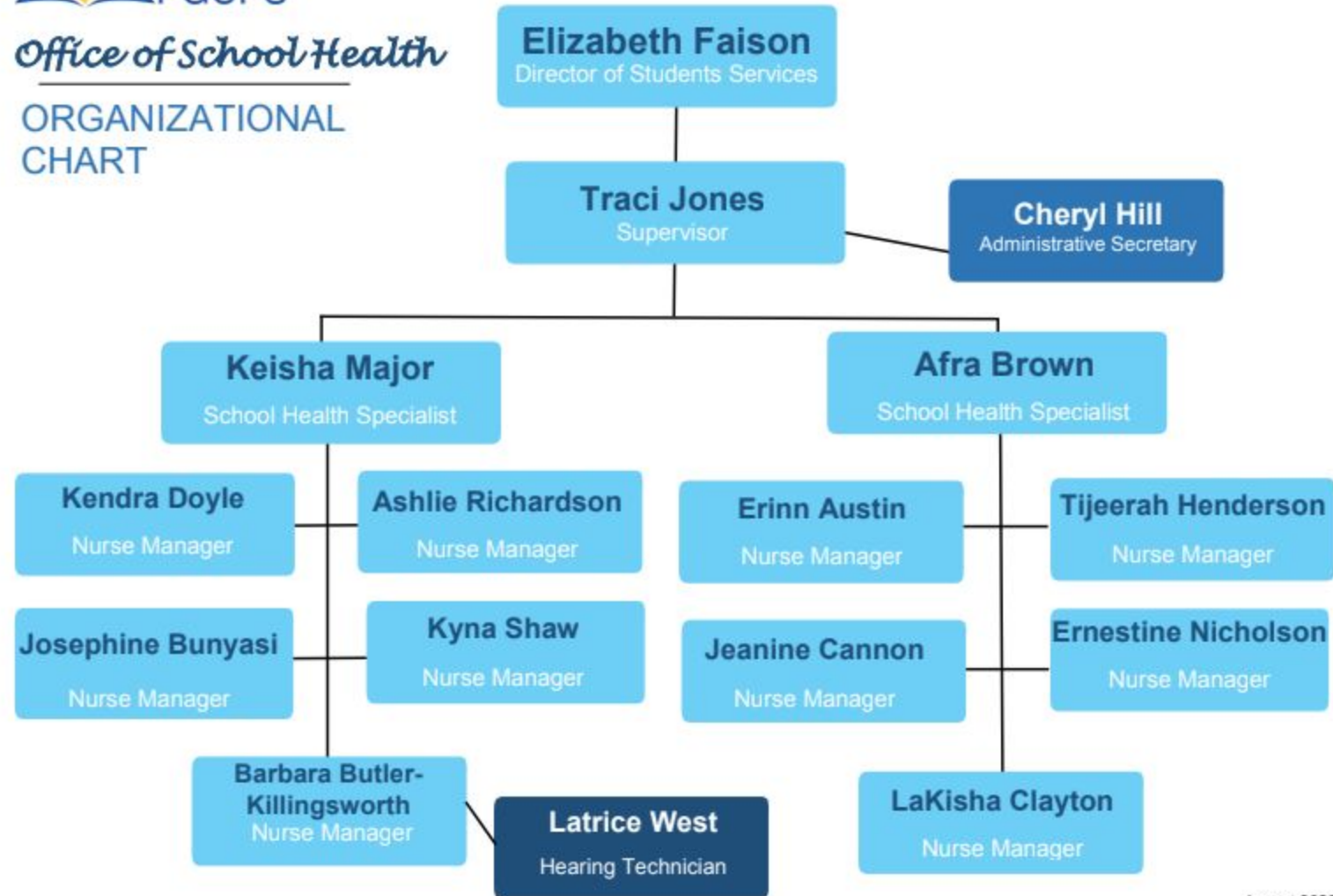
- Share Office of School Health Updates
- Provide COVID updates
- Discuss MonkeyPox prevention and reporting methods



PGCPS

Office of School Health

ORGANIZATIONAL CHART



August 2022

What's New for OSH?



Duty Hours for the Nurses

Work 8.5 hours/day

- 30 minute uninterrupted lunch
- Paid for 8 hours

Hours

- 7 am – 3:30 pm
 - Bell times before 8:30 am
- 8 am – 4:30 pm
 - Bell times after 8:30 am

HAZEL-Telehealth (63 schools)

- Telehealth Program
 - Physical Health
 - Mental Health
- Stock OTC (over the counter) meds
- Provide all equipment, training and support
- Must have signed consent forms
- Additional information regarding implementation/rollout will be provided



Updates

Masks

- Subject to change at anytime
- Be respectful of individuals choices
- Nurses will always be encouraged to wear masks due to increased exposure to ill persons
- Ill individuals will be required to wear a mask while in the health room



Testing

- PGCPS Nurses will use Rapid Antigen Testing only (NO PCR testing)
- Only testing symptomatic students/staff
- May do asymptomatic testing during outbreaks/uncontrolled spread
- Student and Staff COVID testing consent forms must be completed annually



COVID Management Updates

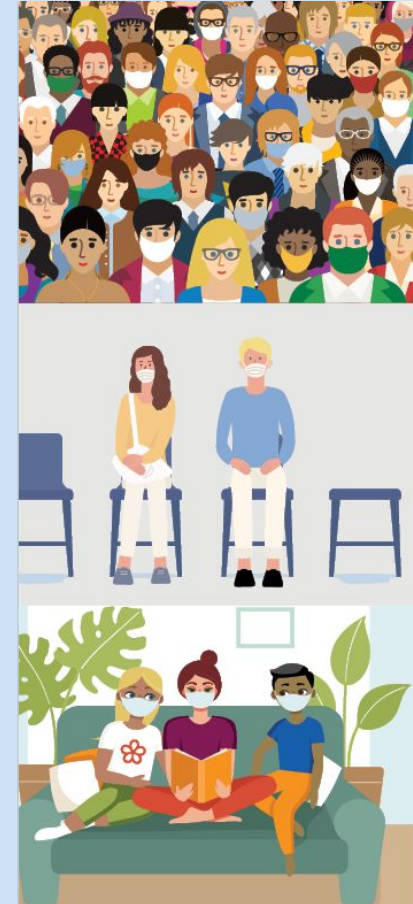
- **Positive cases**
 - Home for 5 days (day zero is date of test)
 - Return on day 6, **if symptom FREE**
 - Must wear mask day 6-10 unless eating
 - Individuals unable to wear a must stay out the entire 10 day or present a negative test to return to school/office
 - No high risk activities
 - Complete HD COVID Reporting Survey



COVID Management Updates

- **Cohorts**

- Receive general notification letter
- Remain at work/school
- If anyone becomes symptomatic, get tested immediately
- Due to exposure risk, it is recommend that cohorts test on Day 5 after known exposure



Monkeypox Outbreak 2022



How Does It Spread?

From human-to-human through:

- ❖ Close contact with respiratory secretions (face-to-face contact)
- ❖ Skin lesions of an infected person
- ❖ Contact with a recently contaminated object
- ❖ Placenta-mother to fetus (congenital monkeypox) during birth



Prevention



- ❖ Frequent Handwashing (encourage routine, frequent hand washing schedule)
- ❖ Avoid close, skin-to-skin contact with people who have a pox-like rash
- ❖ No sharing of items: toys, crayons, clothes, food etc.
- ❖ Routine cleaning of the school should be increased to include more than once a day
- ❖ If you are sick with Monkeypox, isolate at home
- ❖ Wear masks



Other Prevention Considerations



Athletics

- Wipe down equipment after each use
- Recommend that coaches perform daily verbal screening of individual athletes for symptoms:
 - rash
 - fever
 - swollen lymph nodes
 - fatigue
 - headache

Monkeypox Management (for Suspected case)

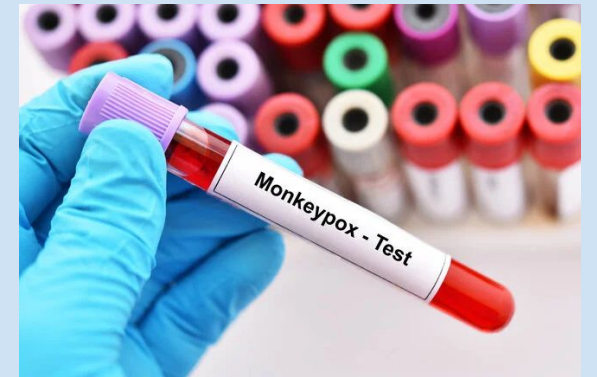
For a suspected case

- mask and isolate individual until picked up
- refer to provider for testing



Complete [HD Monkeypox Survey](#)

- HD will contact individual/parent
- HD will recommend testing site (not widely available)
- HD will provide anticipatory guidance



Monkeypox Next Steps

Remain home

- 2-4 week isolation
- until scabs fall off and new tissue has formed
- **MUST** be cleared by provider to return to school

Classroom(s) should **be thoroughly disinfected after exposure** (wipe down everything)

****Infectious the entire time individuals have symptoms****



Any Questions?



Office of School Health

(301)749-4722

traci.jones@pgcps.org