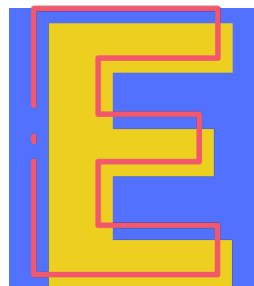
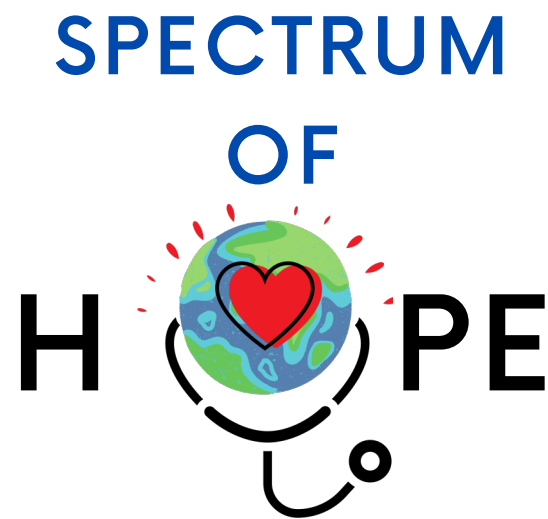


WELCOME to Spectrum of Hope!



Abila Tazanu, M.D.
Pediatrician, Mother,
Charting the Life
Course Ambassador





Who we are:

We are a social purpose entity who collaboratively provides health, wellness and community services using our hearts, experiences and culture to cultivate hope and wisdom!

Our Purpose:

To help those living with autism, related different abilities and our community realize their greatest sense of well-being by securing opportunities and experiences that build hope, health and happiness!

What is a Social Purpose Entity?

"A Social Purpose Entity is a company (NOT A NON-PROFIT) whose enduring reason for being is to **create a better world**. It is an engine for good, creating social benefits by the very act of conducting business. Its growth is a positive force in society."



Our Impact as a Social Purpose Entity

1. Identification and Outreach:

Spectrum of Hope seeks to develop a knowledgeable community of multi-disciplinary professionals who identify or assist in the identification of children and youth with a diagnosis or suspected diagnosis of autism spectrum disorder and related developmental differences, who make timely referrals for support and services.

2. Linkages to Support:

Spectrum of Hope with like-minded community partners seeks to grow an informed and diverse community of individuals living with or providing services to those living with autism and related developmental differences who are able to easily access educational, medical, therapeutics and social supports over the life-span.

3. Greater Hope, Health and Happiness= Greater and Sustained Well-being:

Ultimately, We aim to foster a diverse community of caregivers and family members living with autism and related developmental differences who are able to realize a greater and sustained sense of well-being as evidenced by self-reported levels of stress and community involvement.





Our Why?

- About **1 in 44** children have now been identified with autism spectrum disorder (ASD) according to estimates from CDC's Autism and Developmental Disabilities Monitoring (ADDN) Network. **Sadly, children of color and girls still lag behind in identification!**
- **Prince George's County has the 2nd highest population of children with ASD.** Greater than 2000, per MSDE Census. Given a 2% prevalence rate there are probably closer to 4500-5000 children and youth with ASD.



How do we serve?

- We serve from the heart in a focused manner.
- Value the importance of taking care of each member of our family/ team as we serve the needs of our complex population.
- We use our experience as parents and caregivers to guide.



Start with

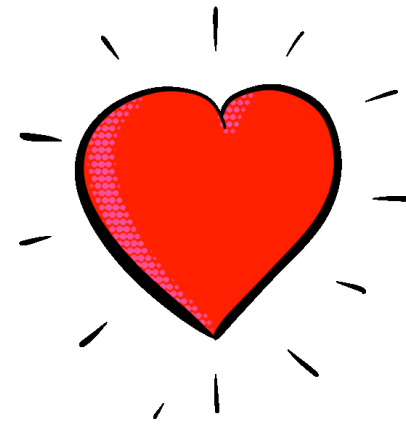
THE

END

in Mind!

**At the end of our lives,
there are really two
things that matter:**

1. Did we love well?



2. Did we live fully?





In order to **Love well** and **Live fully**, we must have **relationships** and **experiences** that build hope, health and happiness



Living with Autism and related developmental differences impact one's ability and those of their loved ones to love well and live fully!





SPECTRUM

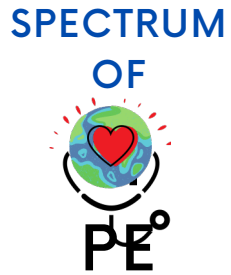


CREATING A VISION FOR THE CHILD/ YOUTH AND FAMILY

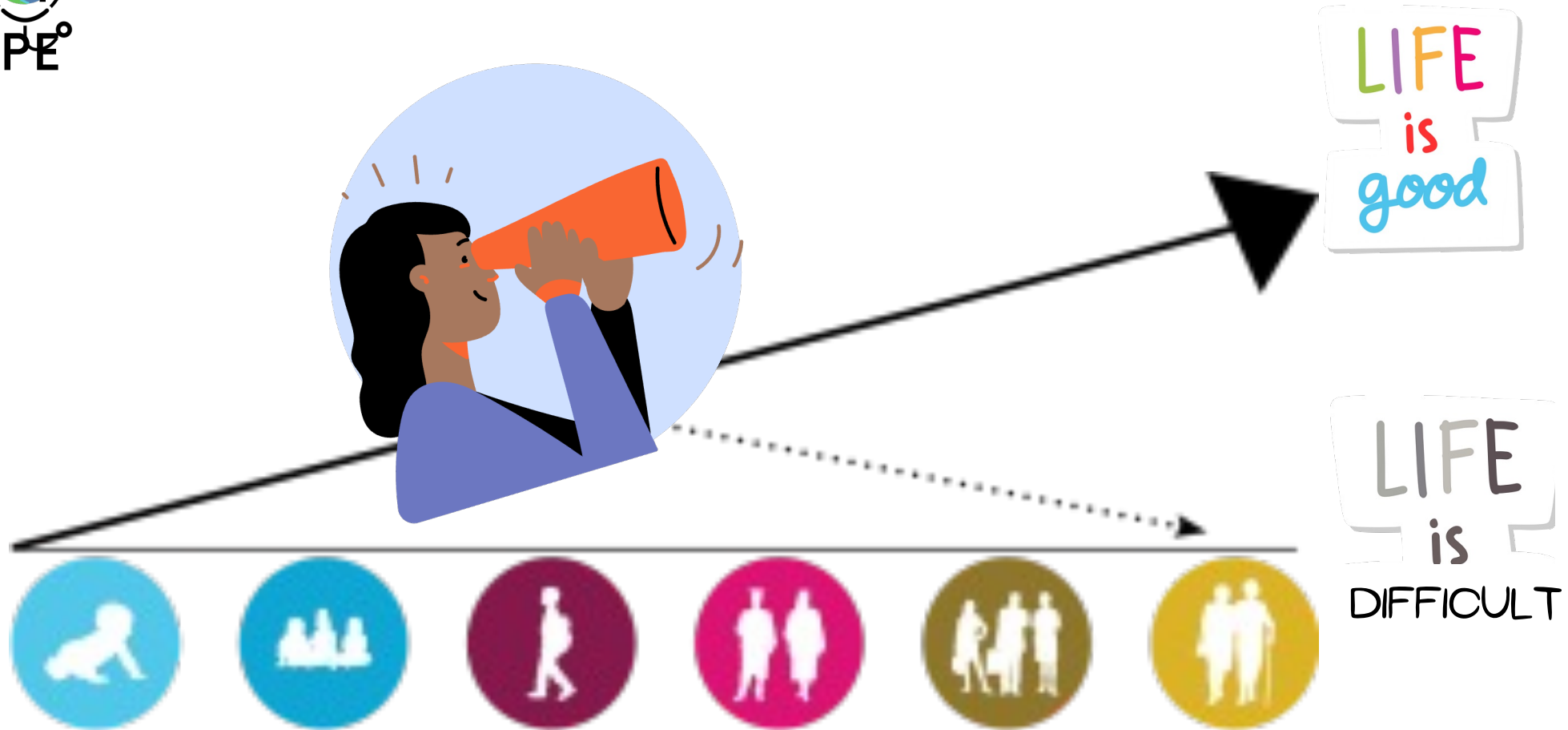
VISION GUIDES A FAMILY AND PROFESSIONALS AS THEY NAVIGATE, BECAUSE IT ILLUMINATES THE EXISTING STRENGTHS OF A CHILD/YOUTH AND THEIR FAMILY AND HIGHLIGHTS THE EXTERNAL MULTI-FACETED SUPPORTS NEEDED TO FULFILL THEIR VISION.

VISION IS ALSO DYNAMIC AND WILL AND SHOULD CHANGE OVER TIME, AS WE DEVELOP OUR CAPACITY TO LIVE FULFILLING LIVES.





What does your vision of a Good Life that builds Hope, Health and Happiness look like for your child and your family?



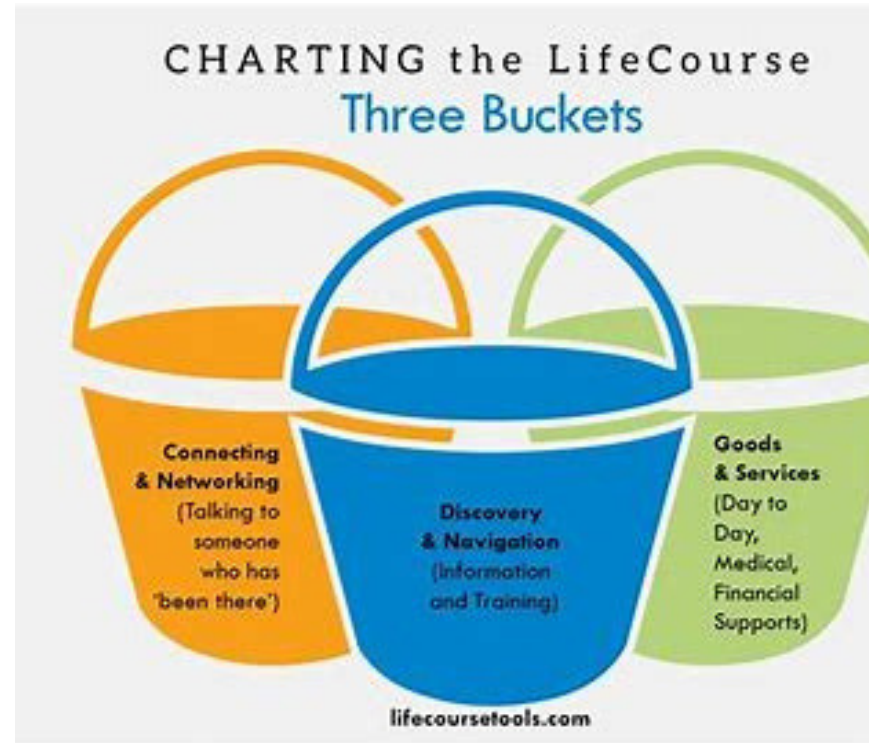
SPECTRUM

OF



**Connecting and
Networking**

*Talking to
someone who
has been there!*



**Goods and
Services**

*Getting Day to
Day Supports,
medical,
educational,
financial,ect*

**Discovery and
Navigation**

*Getting
Information,
Education and
Training!*

**Choosing Services
and Supports**

SPECTRUM
OF
H PE
SERVICES

Identification/
Consultation

- **Diagnostic Evaluations/ Multi-disciplinary Evaluations**- in partnership with Heritage Care Therapy Center
- **Consultations:** Medical Consultations/ Vision Setting Consultations/ Medication Management
- **Family/ Caregiver Support**- MAMAS (Mothering Authentically, Mindfully and Aware of Self)
- **Community Education**- in partnership with Prince George's County Health Department- Family Health Service Division



SPECTRUM OF H PE LINKAGES

Linkages/ Supports

The most critical aspect of our services is to create linkages and ensure that services are accessed. Determining essential linkages help us create means for assessing the impact on overall well-being for caregivers and children/ youth.



Essential Linkages:

- Caregiver Support groups/ Peer connections/ Respite
- Family Mentoring/ Navigation, Guidance
- Healthcare Provider Liaison/ Support
- Early Intervention/ Educational Supports
- Related Services- Speech, Occupational, Physical Therapies
- Behavioral Supports
- Meaningful Social Integration
- Research



Closing
Questions,
Remarks!

Thank you!

www.spectrum-hope.com



Contact Us!

Main Phone: 301-375-0940

Fax: 301-882-9732



Email Us!

English:

Brenda@spectrum-hope.com

Spanish (Español):

Nataly@spectrum-hope.com

Community Outreach and Services:

rlmitchell@co.pg.md.us