

BUTLER WORSHIP W/ PRODUCTION & MAINTENANCE OVERSIGHT

Equips a team to lead people into passionate worship.

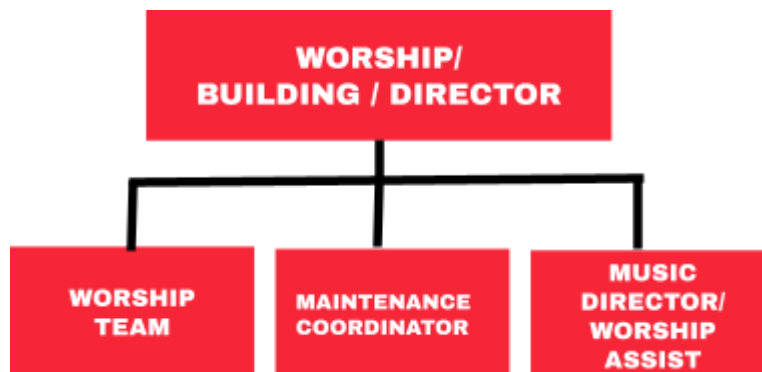
This is a part-time role requiring 20 hours per week.

WHO DO YOU IMPACT?



- **CAMPUS PASTOR**
 - You are an extension of the Campus Pastor to minister to all who come to a weekend experience while functioning within the vision and strategy of the campus.
- **WORSHIP TEAM**
 - You recruit, equip, lead, and encourage the worship team and production team in their gifts.
- **APC ATTENDERS**
 - You are the first face that people see. You create a way for people to experience God through passionate worship.
 - You provide a place for people to serve our community.

WHO DO YOU LEAD?



RESPONSIBILITIES AND EXPECTATIONS

- **WORSHIP**

- Lead rehearsal, worship team, and production coordinator for weekend experiences and other events needed.
- Create an atmosphere for people to feel at ease and engage in expensive worship.
- Recruit, develop and oversee musicians, vocalist and production volunteers.

- **FACILITIES**

- Oversee the cleaning, usage and maintenance of the facility

- **TEAM BUILDING & TRAINING**

- Weekly communication with supervisor & team during one-on-one meetings, phone calls or emails/texts.
- Assesses, trains & leads the team regularly based on the vision and best practices, guiding team members in what needs to be accomplished.
- Leads all volunteers based on the Volunteer Values and APC Values.

SPIRITUAL EXPECTATIONS

This **pastoral staff member** is responsible to maintain ministers credentials through the Assemblies of God or similar credentialing agency and is responsible to spread the message of Jesus, minister to people by providing scriptural leadership and teaching in meetings and services, regularly leads in prayer, conducts baptisms, weddings, funerals, and child dedications and engages in spiritual moments of salvation.

He/She has reviewed, agrees with and represents our Allison Park Church spiritual beliefs (outlined in our current handbook, constitution and bylaws) and has committed to live a lifestyle that aligns with those beliefs. and has signed a letter of acknowledgement.

