

BUTLER FOOD BANK DIRECTOR

Equips a team to lead people into passionate worship.

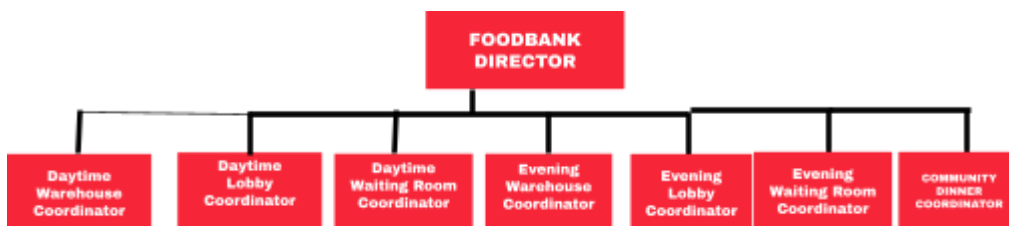
This is a full-time role requiring 40 hours every 2 weeks.

WHO DO YOU IMPACT?



- **CAMPUS PASTOR**
 - You are an extension of the Campus Pastor to minister to all who come to a weekend experience while functioning within the vision and strategy of the campus.
- **FOOD BANK TEAM**
 - You recruit, equip, lead, and encourage a team of people to serve our community's food insecurity needs
- **APC ATTENDERS**
 - You are the first face that people see. You create a way for people to experience God through passionate worship.
 - You provide a place for people to serve our community.
- **BUTLER COMMUNITY**
 - You represent APC in the broader Butler area—building trust, compassion, and credibility through consistent service. You connect with local agencies, schools, and businesses to identify needs, form partnerships, and ensure that every guest experiences dignity and hope when they receive help from us.

WHO DO YOU LEAD?



RESPONSIBILITIES AND EXPECTATIONS

- **FOODBANK**

- Implement and follow Greater Pittsburgh Food Bank guidelines and Butler County & PA state laws/regulations.
- Lead coordinators to recruit, train and supervise volunteers to complete food distributions.
- Create an atmosphere that's welcoming, encouraging and inviting to our church so that every participant gets the opportunity to attend, get saved, water baptized, in a lifegroup, support group or serve team.

- **TEAM BUILDING & TRAINING**

- Weekly communication with supervisor & team during one-on-one meetings, phone calls or emails/texts.
- Assesses, trains & leads the team regularly based on the vision and best practices, guiding team members in what needs to be accomplished.
- Leads all volunteers based on the Volunteer Values and APC Values.

SPIRITUAL EXPECTATIONS

This **staff member** is responsible for spreading the message of Jesus, minister to people by sharing biblical perspectives of our ministry, leading in prayer, caring for others in a Christ centered scriptural way, and helping to ensure that every person experiences God each time they come through our doors. He/She has reviewed, agrees with and represents our Allison Park Church spiritual beliefs (outlined in our current handbook, constitution and bylaws) and has committed to live a lifestyle that aligns with those beliefs. and has signed a letter of acknowledgement.

