



Discover the
Versatility of
MiracleRug.

MiracleRug™
With Belgotex Miracle Fibre

MiracleRug™

Our rugs are an exceptional blend of technical prowess and tasteful design.



Belgotex's Miracle Fibre

- Extremely versatile
- Hard-wearing
- Fade resistant
- Easy to clean
- Indoors & outdoors

Each rug is made with Belgotex's Miracle Fibre, which delivers an extremely versatile, hard-wearing product that won't fade, is easy to clean, and can be used indoors and outdoors.

It is the remarkable combination of all of these attributes into a single beautiful product that inspired the name MiracleRug.



MiracleRug™

Indoors & Outdoors

Most yarns are dyed towards the end of the manufacturing process. The pigment in our Miracle Fibre yarn is baked in at the point of extrusion, making MiracleRugs perfectly suited to enduring our harsh local climate.



Fadeproof & Rainproof

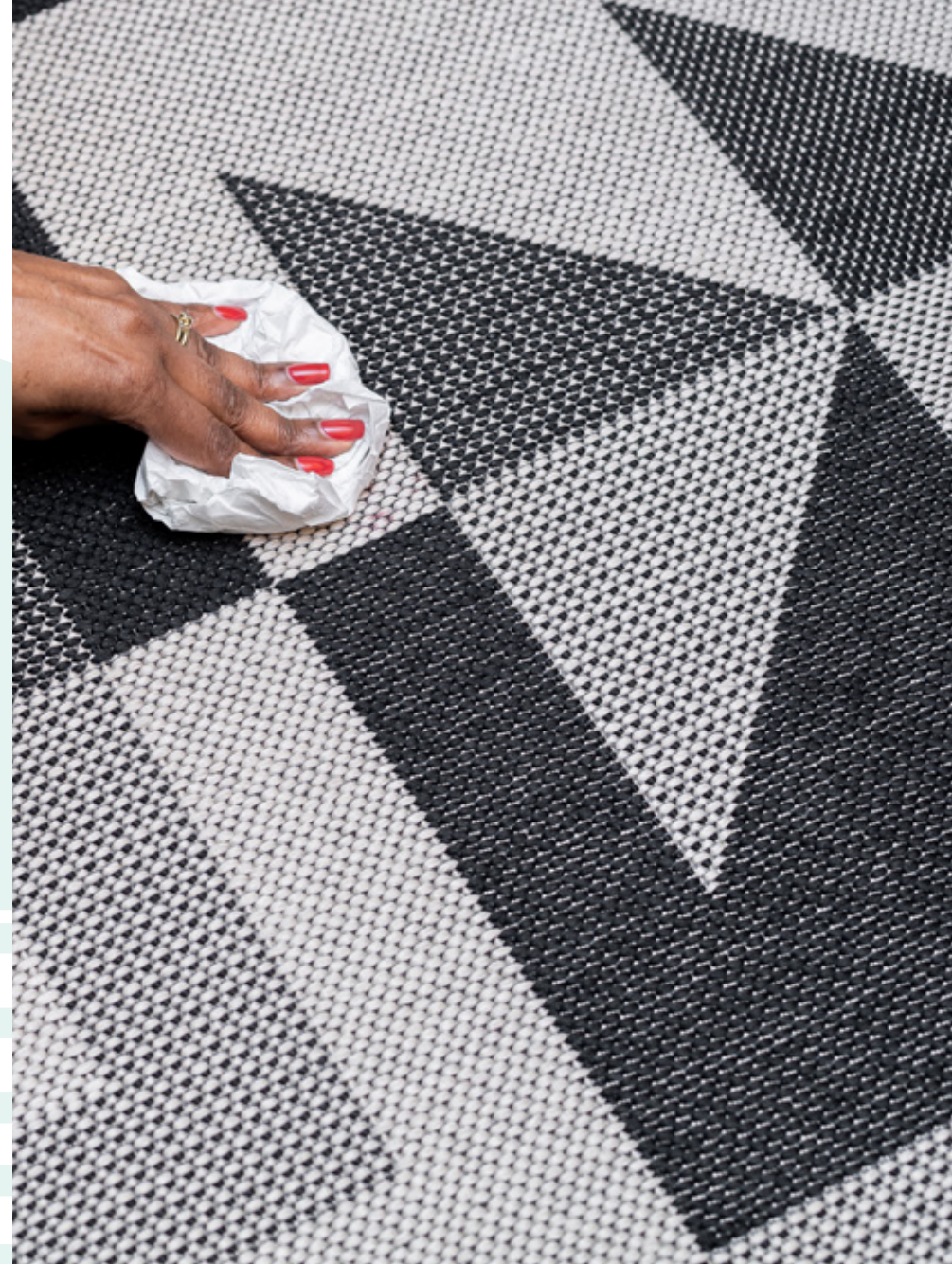
The inclusion of UV stabilisers developed specifically for our harsh African sun makes our rugs fade-resistant. The Miracle Fibre yarn also does not absorb water, which prevents it from clinging to dust, ensuring our rugs are easy to clean and maintain.

Although every precaution has been taken to ensure your new MiracleRug can withstand the harsh African climate, it is always advisable to protect your rug from continuous direct sunlight. Each rug comes with a 1-year warranty.

MiracleRug™

Stainproof

Miracle Fibre has excellent chemical resistance properties which protect our rugs from stains. MiracleRugs can even be cleaned with bleach and acetone without damaging the fibres.



Allergy Friendly

The dust resistance and easy-cleaning properties means MiracleRugs are hygienic, allergy-friendly products.





Illusion.

MiracleRug™



Albers



Escher



View 3D

Scan with an
iOS device

2000 × 3000 mm*

1600 × 2400 mm

800 × 200 mm

*Featured in image



Op Art.

MiracleRug™



Riley



Apollonio



2000 × 3000 mm*
1600 × 2400 mm

*Featured in image



View 3D
Scan with an
iOS device





Scutes.

MiracleRug™



Paradalis



Spekii



View 3D

Scan with an
iOS device

2000 × 3000 mm*

1600 × 2400 mm

800 × 200 mm

*Featured in image



Twill.

MiracleRug™



Warp



Weft



2000 × 3000 mm*
1600 × 2400 mm
800 × 200 mm

*Featured in image



View 3D

Scan with an
iOS device





Imprint.

MiracleRug™



Trail



Path



View 3D

Scan with an
iOS device

2000 × 3000 mm*
1600 × 2400 mm
800 × 200 mm

*Featured in image



Ubuntu.

MiracleRug™



Umusa



Uthando



2000 × 3000 mm*
1600 × 2400 mm

*Featured in image



View 3D

Scan with an
iOS device





Transcendence.

MiracleRug™



Evolve

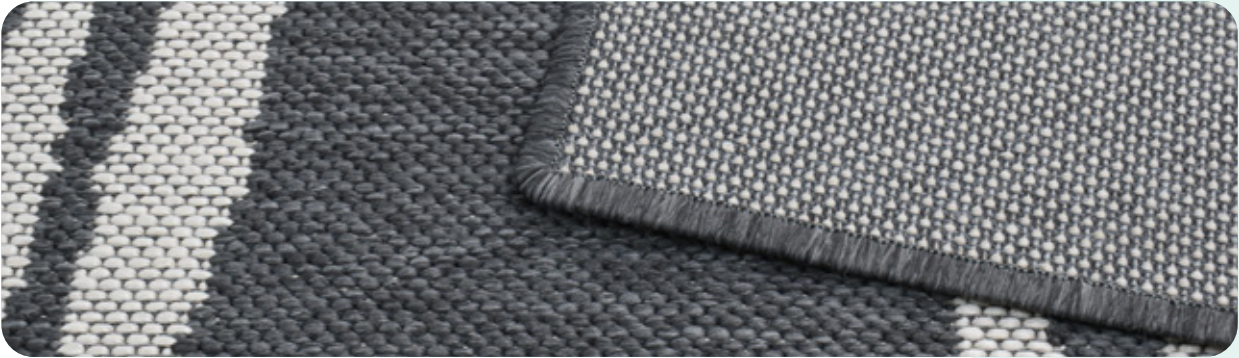


View 3D

Scan with an
iOS device

2000 × 3000 mm*
1600 × 2400 mm
800 × 200 mm

*Featured in image



Placid.

MiracleRug™



Kimlim



2000 × 3000 mm*
1600 × 2400 mm

*Featured in image



View 3D
Scan with an
iOS device



Infinity.

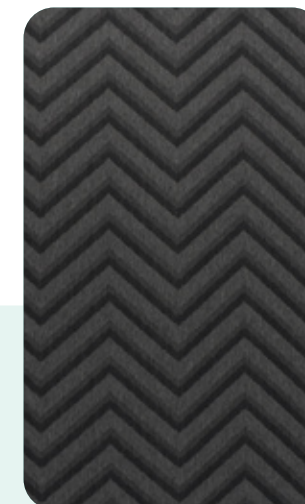
MiracleRug™



Batonga



Tarai



Shanga



View 3D

Scan with an
iOS device

2000 × 3000 mm*

1600 × 2400 mm

800 × 200 mm

*Featured in image

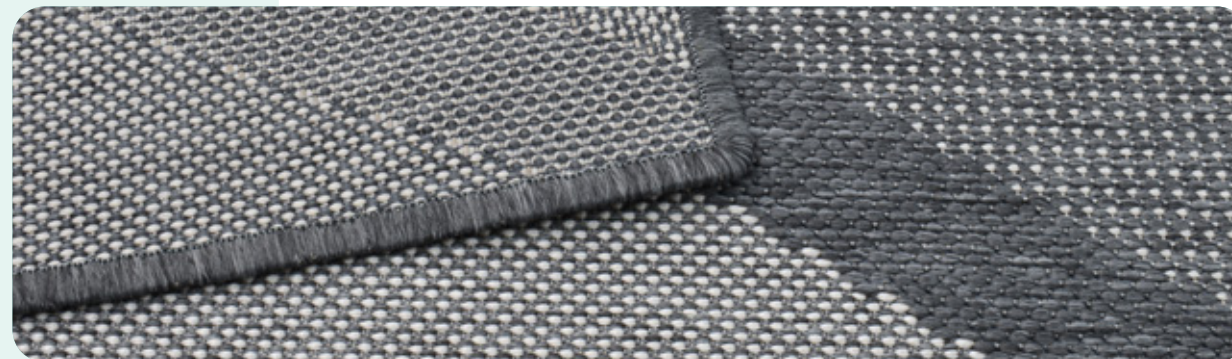


Quadrum.

MiracleRug™



Monochrome



2000 × 3000 mm*
1600 × 2400 mm

*Featured in image



View 3D

Scan with an
iOS device



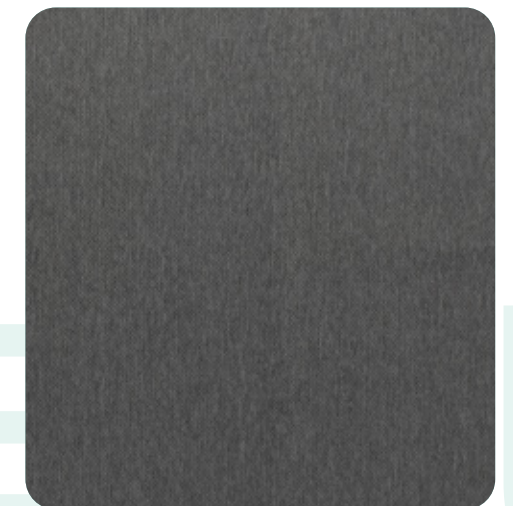


Schema.

MiracleRug™



Balance



Precision



View 3D

Scan with an
iOS device

2000 × 3000 mm*

1600 × 2400 mm

800 × 200 mm

*Featured in image



Cleaning Guidelines



Identify the Stain

Stain	Method
Beetroot Juice	👉
Betadine	👉
Butter	👉
Chocolate	👉
Chocolate Sauce	👉
Coffee	👉
Cooking Oil	👉
Cool Drink	👉
Curry Paste	👉
Egg	👉
Grape Juice	👉
Hot Chocolate	👉
Jam	👉
Meat Gravy	👉
Milk	👉
Mud	👉
Mustard	👉
Peanut Butter	👉
Rust	👉
Salad Dressing	👉
Spaghetti Sauce	👉
Tea	👉
Tomato Sauce	👉
Vinegar	👉
Wine	👉
Blood	🔄👉
Mercurochrome	🔄👉
Photocopy Powder	🔄👉
Machine Oil	💧

- 👉 Bleach Method
- 💧 Acetone Method
- 🔄 Requires continuous cleaning and blotting until stain is removed.



Bleach Method

1. First remove as much of the foreign material as possible: carefully scrape off thick or sticky material with a spoon, vacuum up crust pieces if it is dry, or blot with a white paper towel if the stain is liquid.
2. Mix a solution of 50% clear household bleach & 50% warm water in a spray bottle. Use clear, pure household bleach containing no additives. Perfumed bleach can also be used.
3. Spray the solution directly onto the rug in the affected area — do not over-wet.
4. Blot the surface, working from the outside of the stain to the centre of the stain to prevent spreading. Repeat this procedure until the stain disappears.
5. Spray with clean water and blot repeatedly until all bleach is removed.
6. Use white absorbent paper towels weighted down with a heavy object to absorb any remaining moisture.
7. When completely dry, lightly vacuum.

Acetone Method

- ✚ This method only applies to machine oil stains. Acetone is available at pharmacies.
1. Remove as much of the stain as possible by blotting or scraping up.
 2. Apply a small amount of pure acetone or nail polish remover to a white cloth and work in gently — do not over-wet.
 3. Blot the surface, working from the outside of the stain to the centre of the stain to prevent spreading. Repeat this procedure until the stain disappears.
 4. Use white absorbent paper towels weighted down with a heavy object to absorb any remaining moisture.
 5. When completely dry, lightly vacuum.

Important Information

Deal with stains as soon as possible. The faster you act, the more successful the results.

SABS
ISO 9001



Residential



Underfloor



Eco-Friendly

belgotex.co.za/miraclerug

MiracleRug™

With Belgotex Miracle Fibre

Belgotex™