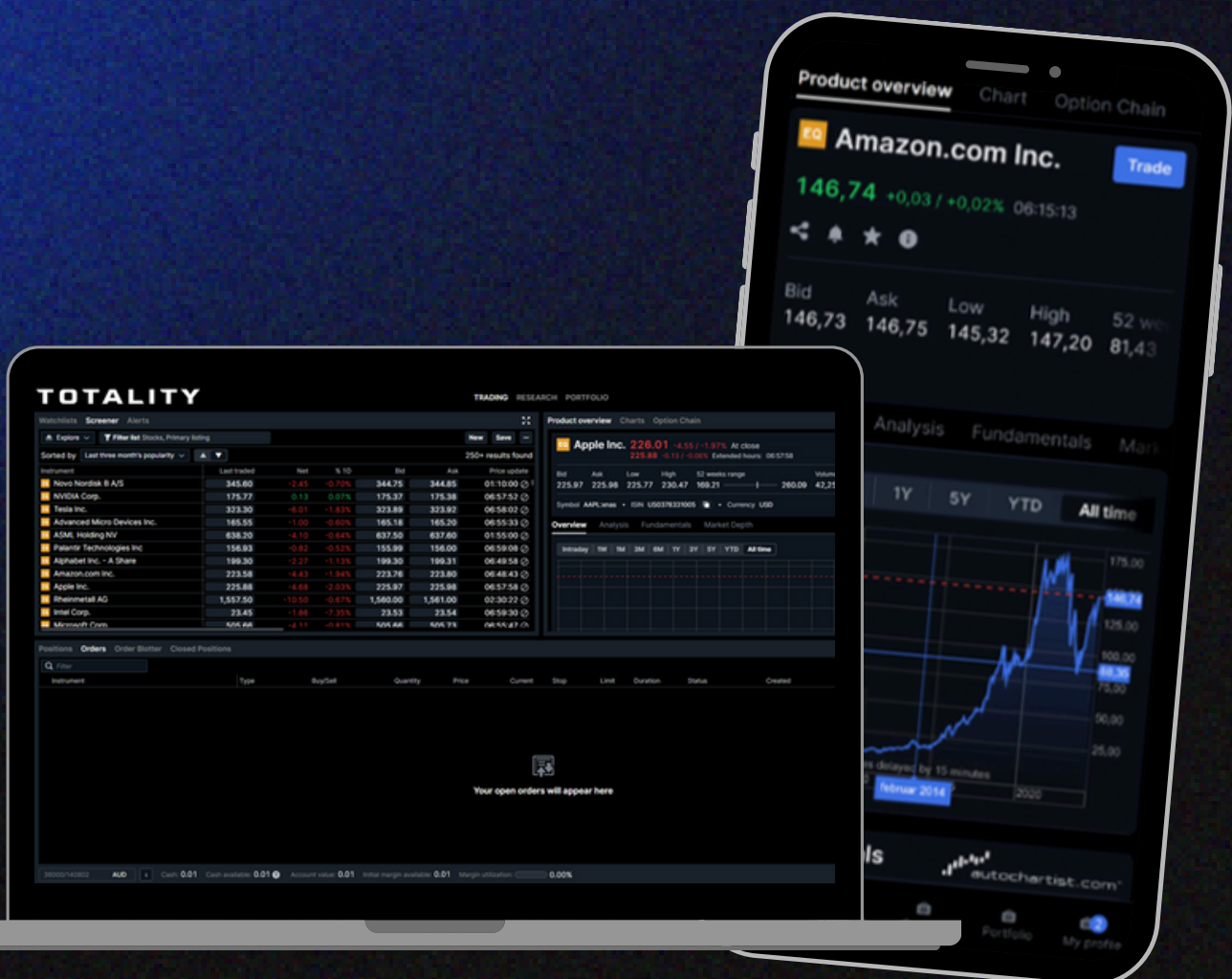


Totality Edge: an introduction



What is Totality Edge? (formerly SaxoTraderGo)

Totality Edge (formerly SaxoTraderGo) is your all-in-one trading powerhouse, accessible from your desktop. Designed for active traders, it delivers smarter tools, sharper insights and seamless control, all backed by enterprise-grade security.

Why Totality Edge?

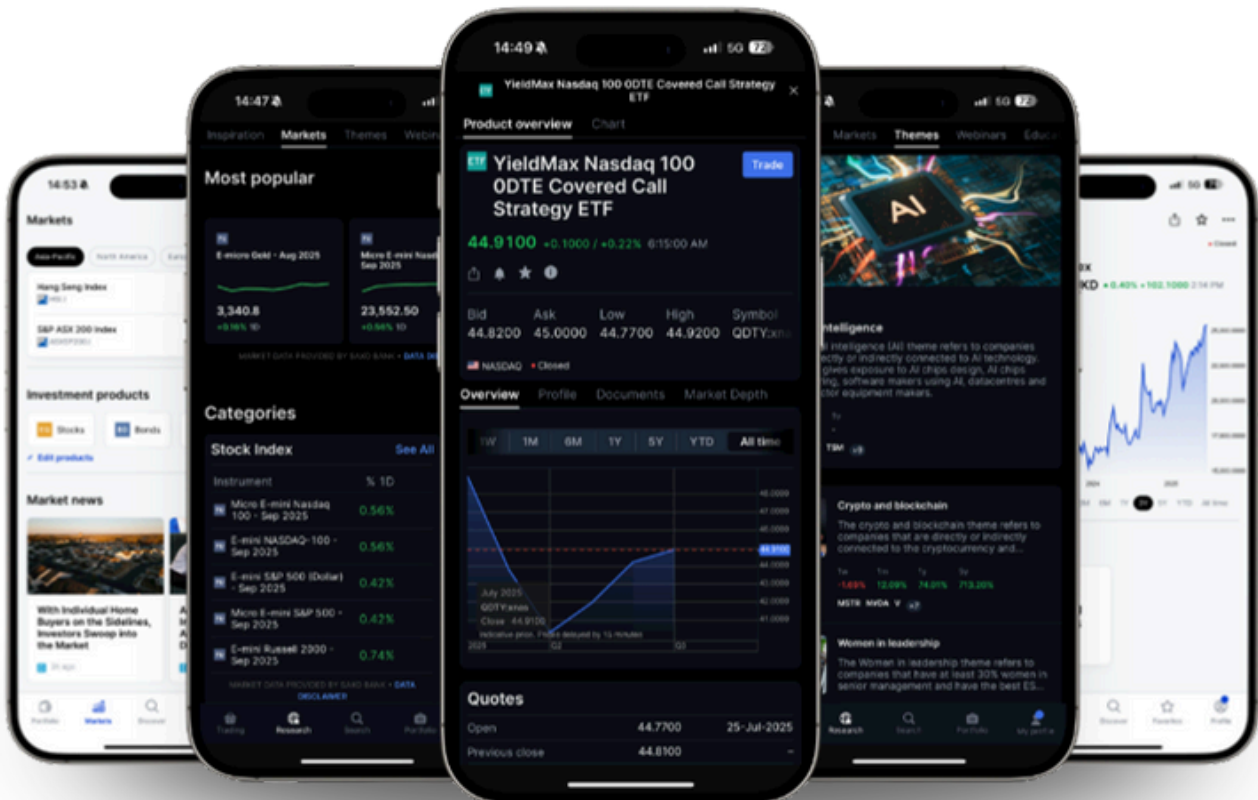
From global equities to FX and options, Totality delivers the same powerful tools, insights, and precision execution trusted by professional traders:

- **Options Matrix:** Access personalised, real-time data and trade directly from the matrix.
- **Returns Breakdown:** Analyse trade development using time-weighted percentages.
- **Portfolio Summary:** View current and historical reports of your holdings and exposure.
- **Performance Analysis:** Dedicated dashboards will help you visualise your P/L, returns, performance history and more.

What products can I trade with a Totality Edge account?

With a Totality account, you gain access to a wide range of global financial products, including:

- **23,000+ stocks** across core and emerging markets on 50 exchanges worldwide
- **7,400+ ETFs** from over 30 global exchanges.
- **5,200+** government and corporate bonds across global exchanges and OTC markets.
- **3,100+** listed options on equities, energy, and more, from 20 exchanges worldwide.
- **250+ futures** covering equity indices, energy, metals, agriculture, interest rates, and FX.
- **8,600+ CFDs** with tight spreads and low commissions.
- **9 crypto FX CFD pairs**, or gain exposure through crypto exchange-traded products.
- **185 FX spot pairs** and 140 forwards across major, minor, exotic currencies, and metals.



Regulated, reliable, and ready

Fully regulated:

- We adhere to the strictest regulatory standards, and are fully licensed and regulated by ASIC.

Financial security:

- Assets are safeguarded by tier-one global asset custodians, such as Citi Group. Client funds are held in a segregated client trust account maintained in Australia with HSBC and NAB.

Secure transactions:

- Totality ensures your account activity and personal data are protected with advanced encryption and compliance standards.

FAQ

To learn more about Totality Edge, please visit [here](#).

For questions or support, reach out to our client services team at help@totality.com.au or call us on +61 2 8267 9000