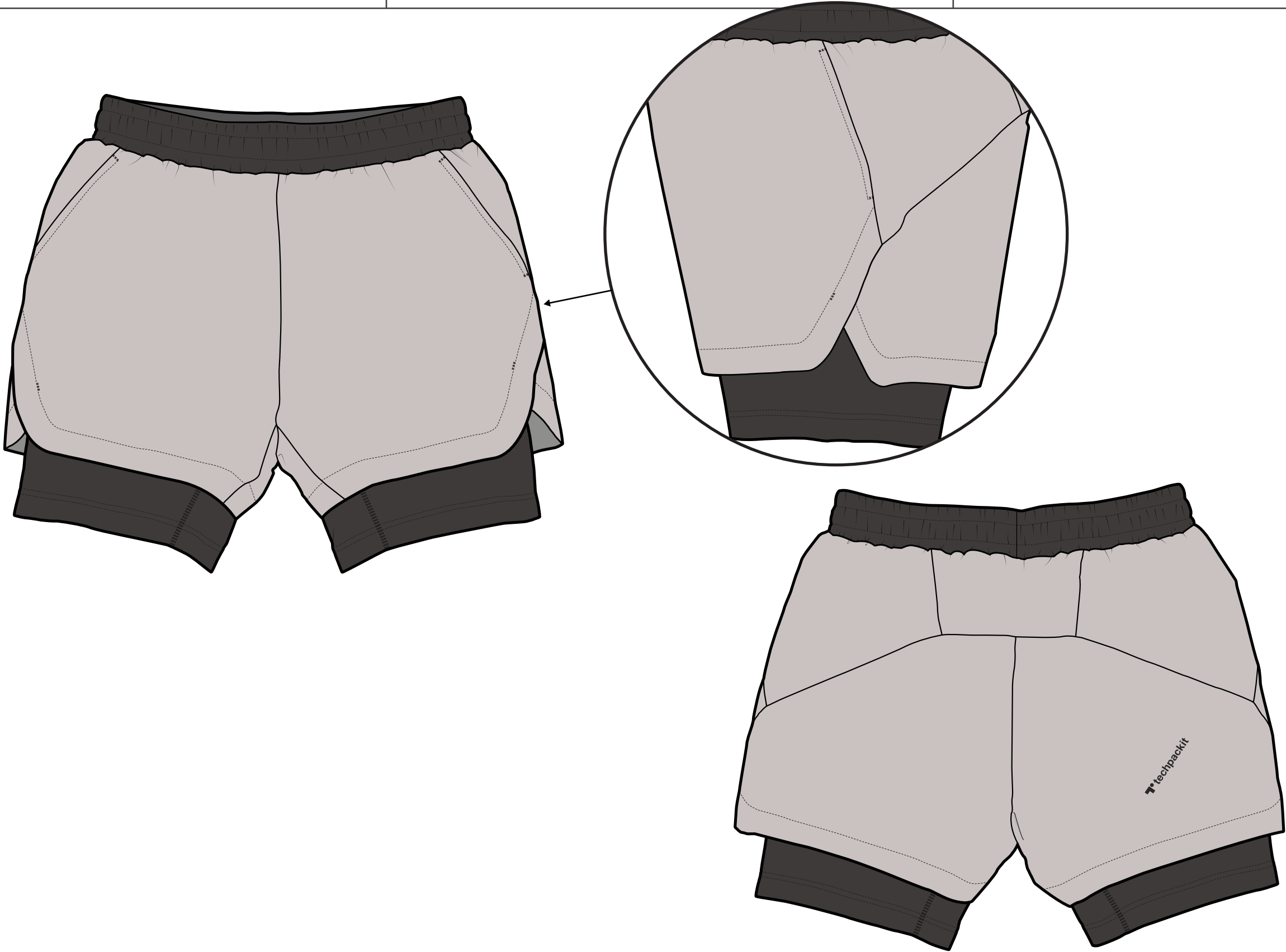


<b>BRAND:</b> TECHPACKIT	<b>STYLE NAME:</b> 2-IN-1 RACE SHORTS	<b>SIZE RANGE:</b> S - M - L - XL
<b>COLLECTION:</b> WOMENS ACTIVE	<b>DESCRIPTION:</b> SHORTS WITH COMPRESSION UNDERLAYER	<b>SAMPLE SIZE:</b> M
<b>STYLE CODE:</b> TPI-AW25EX04	<b>MAIN FABRIC:</b> 100% POLYAMIDE RIPSTOP 80GSM	<b>DATE:</b> 23-04-24



BRAND: TECHPACKIT	STYLE NAME: 2-IN-1 RACE SHORTS	SIZE RANGE: S - M - L - XL
COLLECTION: WOMENS ACTIVE	DESCRIPTION: SHORTS WITH COMPRESSION UNDERLAYER	SAMPLE SIZE: M
STYLE CODE: TPI-AW25EX04	MAIN FABRIC: 100% POLYAMIDE RIPSTOP 80GSM	DATE: 23-04-24



BRAND: TECHPACKIT	STYLE NAME: 2-IN-1 RACE SHORTS	SIZE RANGE: S - M - L - XL
COLLECTION: WOMENS ACTIVE	DESCRIPTION: SHORTS WITH COMPRESSION UNDERLAYER	SAMPLE SIZE: M
STYLE CODE: TPI-AW25EX04	MAIN FABRIC: 100% POLYAMIDE RIPSTOP 80GSM	DATE: 23-04-24

## FABRICS

CODE	NAME	COMPOSITION	CONSTRUCTION	WEIGHT	COLOUR
F1	MAIN FABRIC	100% POLYAMIDE	RIPSTOP	80GSM	PANTONE 13-0005 TCX TEMPLE GRAY PANTONE 19-0503 TCX BITUMEN
F2	UNDERSHORT FABRIC	82% POLYAMIDE / 18% ELASTANE	SINGLE JERSEY	145GSM	PANTONE 19-0503 TCX BITUMEN
F3	POCKET LINING	100% POLYESTER	PLAIN WEAVE	80GSM	WHITE

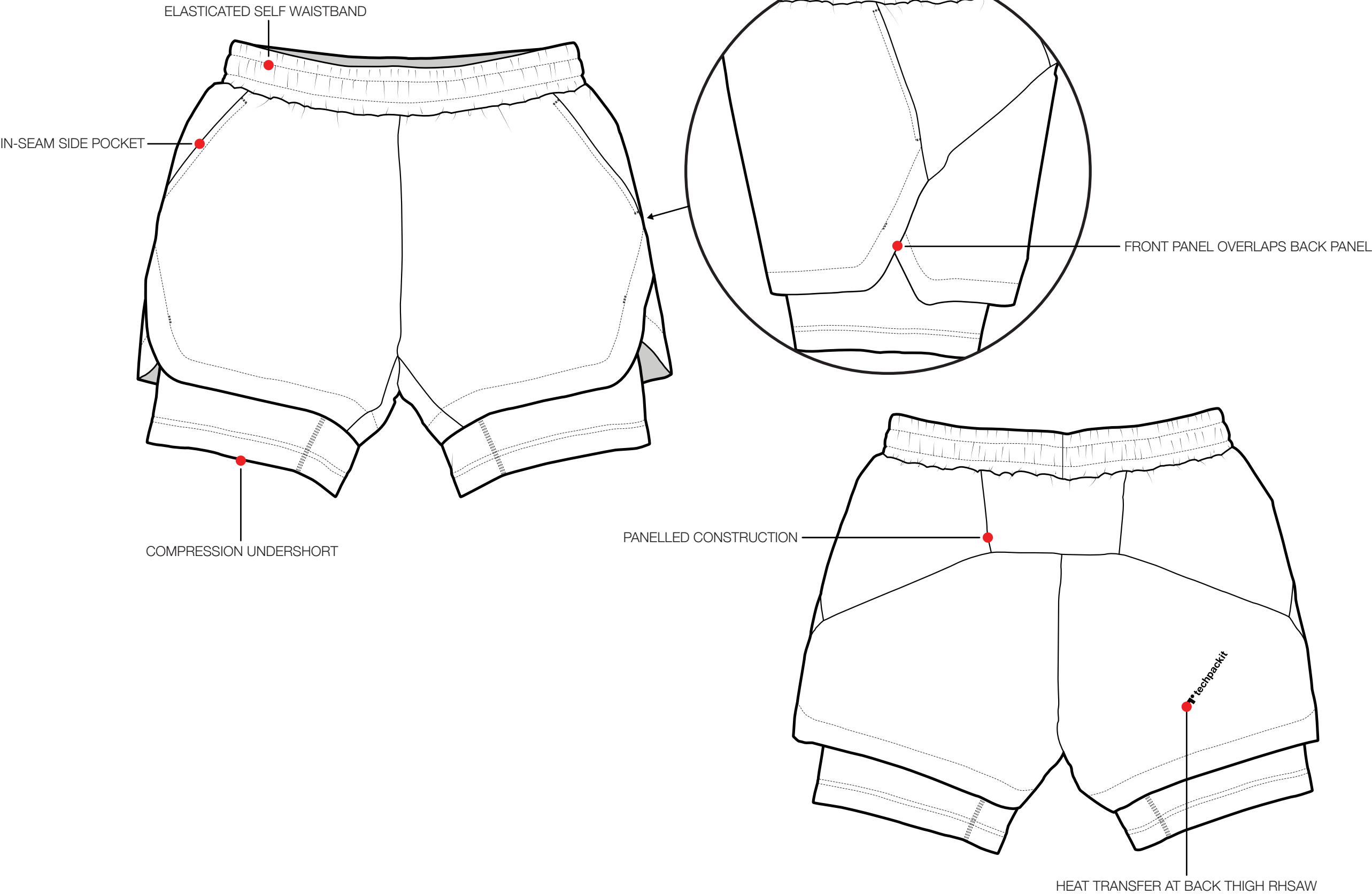
## COMPONENTS

CODE	NAME	COMPOSITION	CONSTRUCTION	COLOUR	DIMENSIONS
C1	ELASTIC	82% POLYAMIDE / 18% ELASTANE	KNITTED, SOFT	WHITE	50MM
C2	HEAT TRANSFER	STRETCH PLASTISOL		PANTONE 19-0503 TCX BITUMEN	140MM x 15MM
C3	CARE / SIZE LABEL	100% POLYESTER	SATIN	WHITE	35MM x 100MM
C4	THREAD	100% POLYESTER	STAPLE SPUN	DTM	

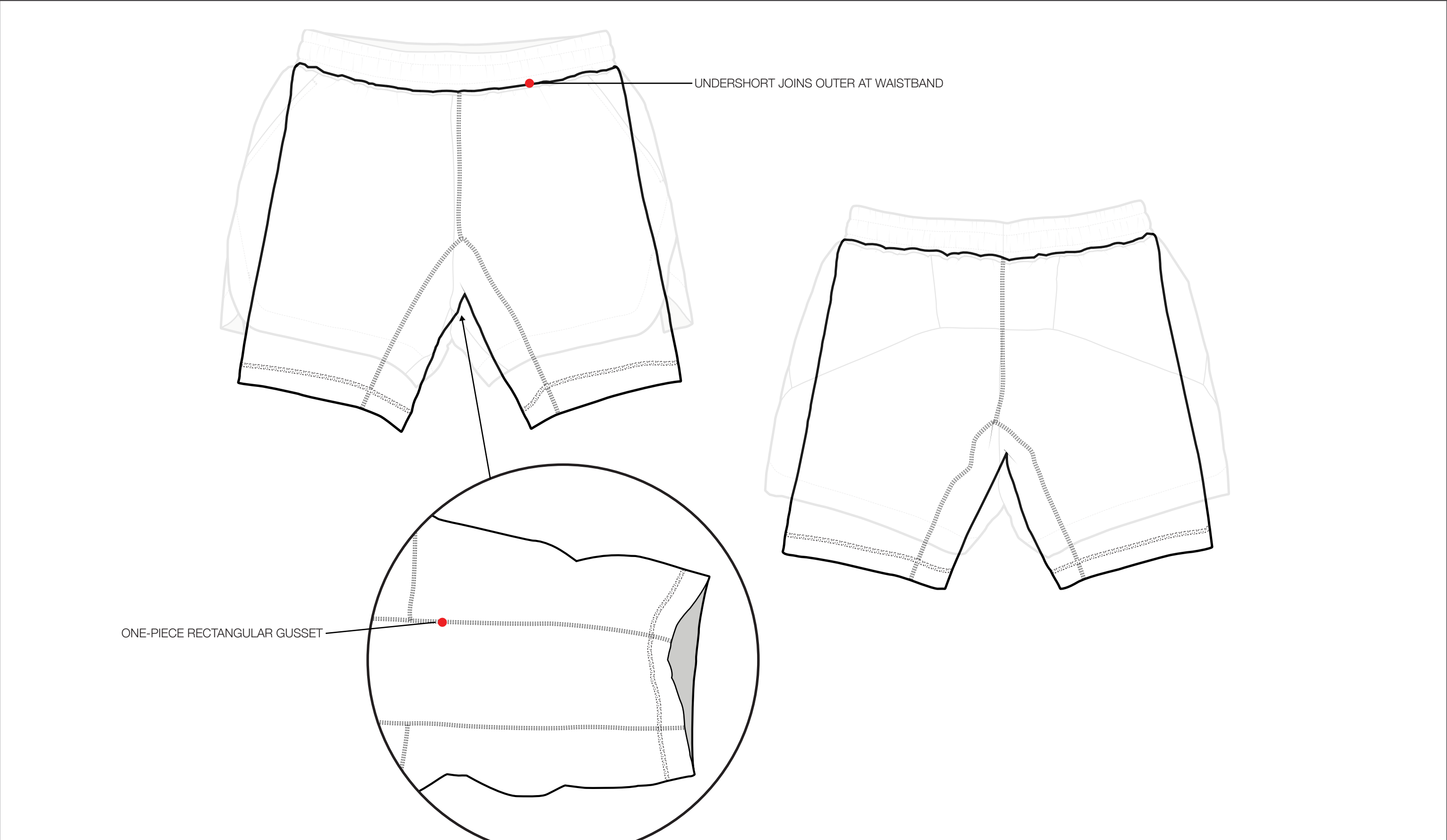
## PACKAGING

CODE	NAME	COMPOSITION	COLOUR	DIMENSIONS
P1	POLYBAG	POLYPROPYLENE	TRANSPARENT	340MM x 280MM

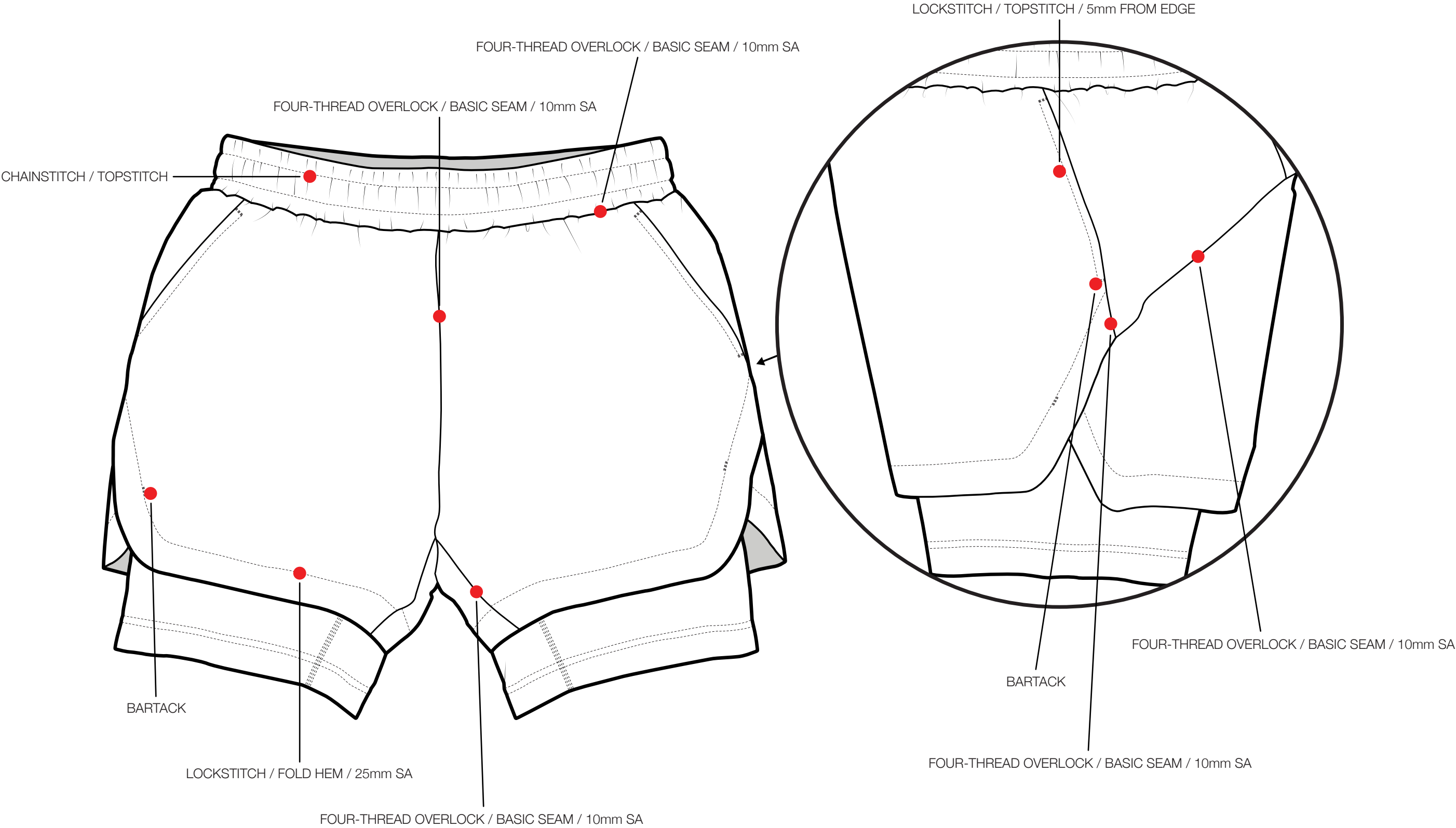
BRAND: TECHPACKIT	STYLE NAME: 2-IN-1 RACE SHORTS	SIZE RANGE: S - M - L - XL
COLLECTION: WOMENS ACTIVE	DESCRIPTION: SHORTS WITH COMPRESSION UNDERLAYER	SAMPLE SIZE: M
STYLE CODE: TPI-AW25EX04	MAIN FABRIC: 100% POLYAMIDE RIPSTOP 80GSM	DATE: 23-04-24



<b>BRAND:</b> TECHPACKIT	<b>STYLE NAME:</b> 2-IN-1 RACE SHORTS	<b>SIZE RANGE:</b> S - M - L - XL
<b>COLLECTION:</b> WOMENS ACTIVE	<b>DESCRIPTION:</b> SHORTS WITH COMPRESSION UNDERLAYER	<b>SAMPLE SIZE:</b> M
<b>STYLE CODE:</b> TPI-AW25EX04	<b>MAIN FABRIC:</b> 100% POLYAMIDE RIPSTOP 80GSM	<b>DATE:</b> 23-04-24

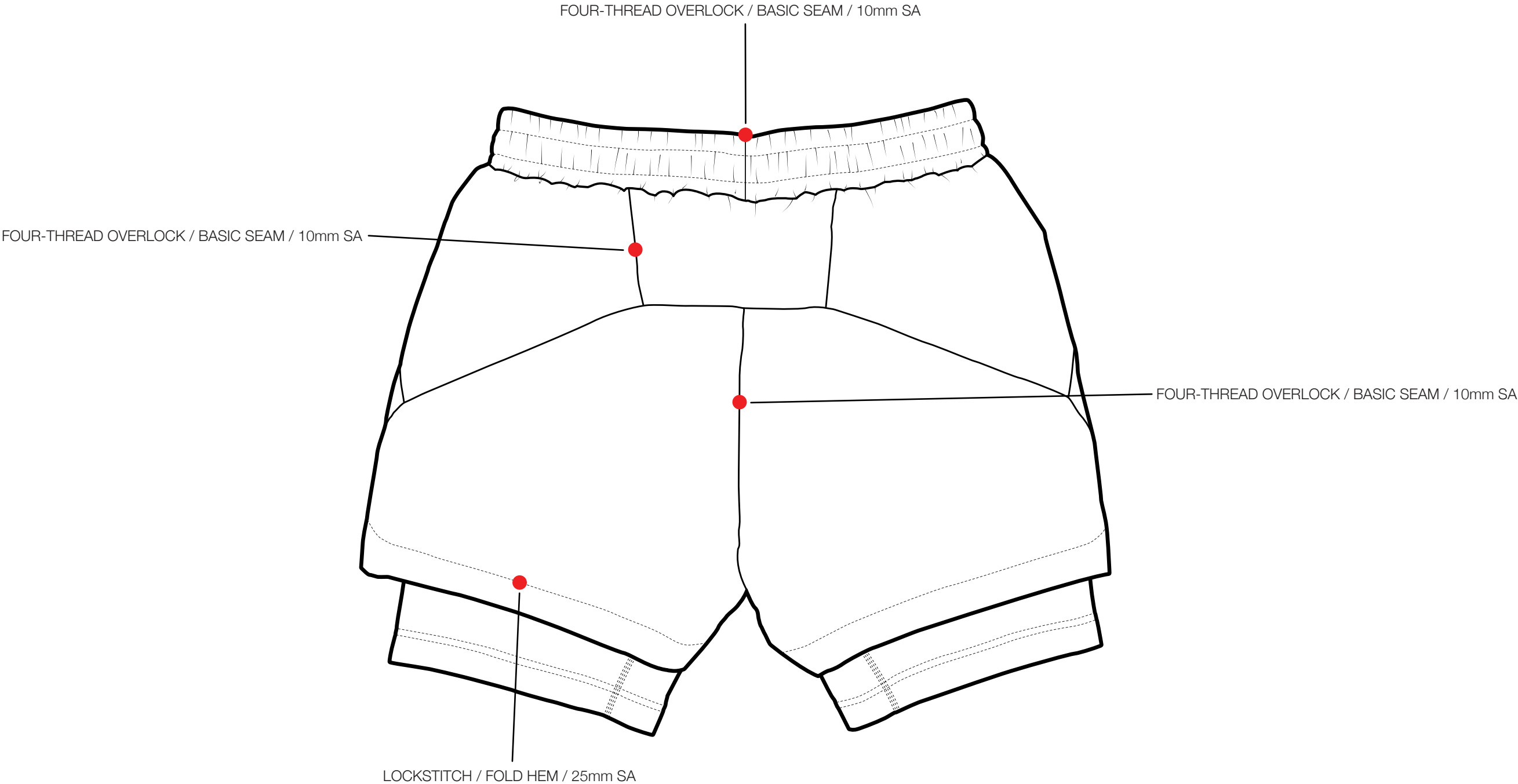


BRAND: TECHPACKIT	STYLE NAME: 2-IN-1 RACE SHORTS	SIZE RANGE: S - M - L - XL
COLLECTION: WOMENS ACTIVE	DESCRIPTION: SHORTS WITH COMPRESSION UNDERLAYER	SAMPLE SIZE: M
STYLE CODE: TPI-AW25EX04	MAIN FABRIC: 100% POLYAMIDE RIPSTOP 80GSM	DATE: 23-04-24



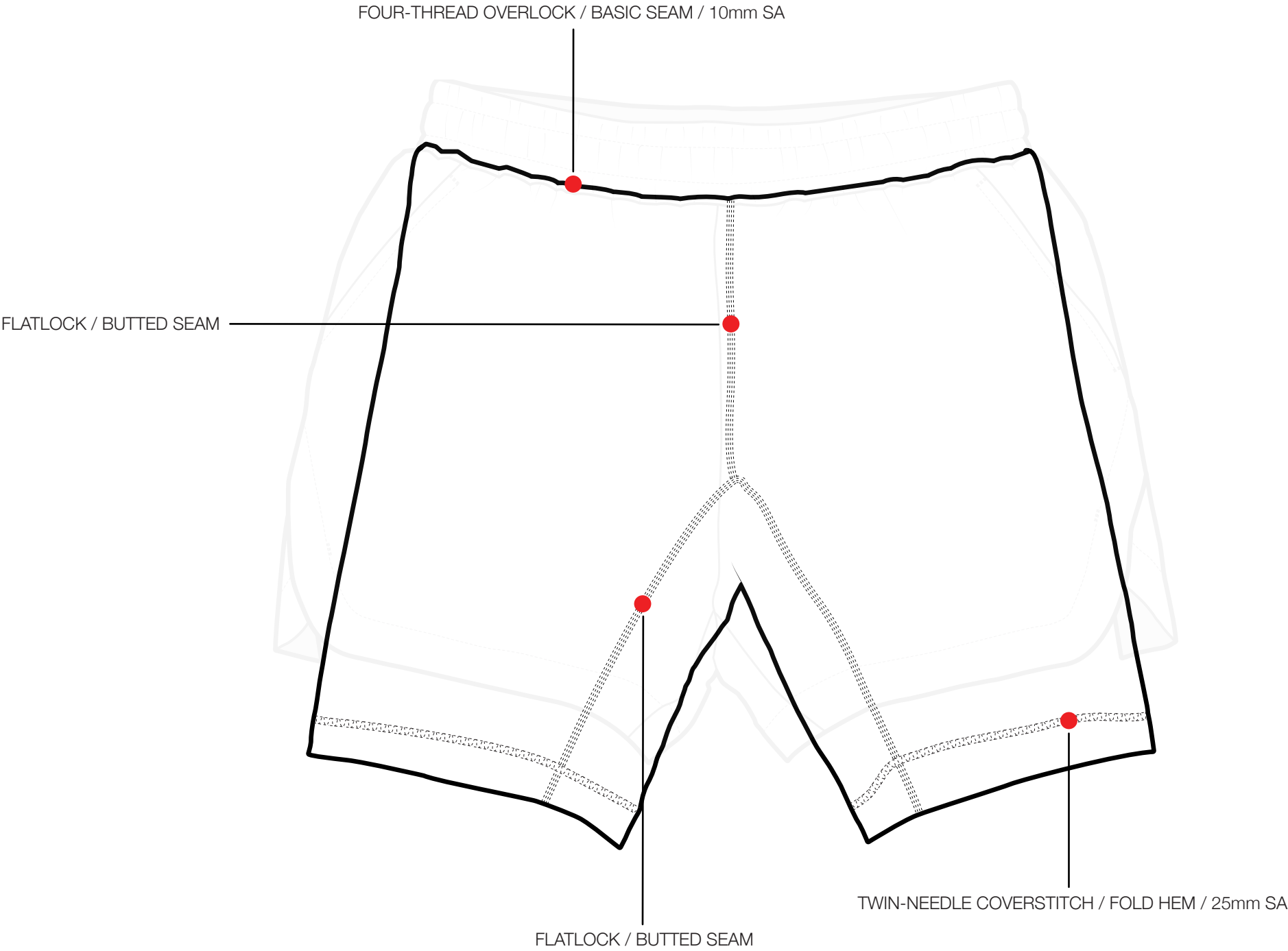
SA = SEAM ALLOWANCE

<b>BRAND:</b> TECHPACKIT	<b>STYLE NAME:</b> 2-IN-1 RACE SHORTS	<b>SIZE RANGE:</b> S - M - L - XL
<b>COLLECTION:</b> WOMENS ACTIVE	<b>DESCRIPTION:</b> SHORTS WITH COMPRESSION UNDERLAYER	<b>SAMPLE SIZE:</b> M
<b>STYLE CODE:</b> TPI-AW25EX04	<b>MAIN FABRIC:</b> 100% POLYAMIDE RIPSTOP 80GSM	<b>DATE:</b> 23-04-24



SA = SEAM ALLOWANCE

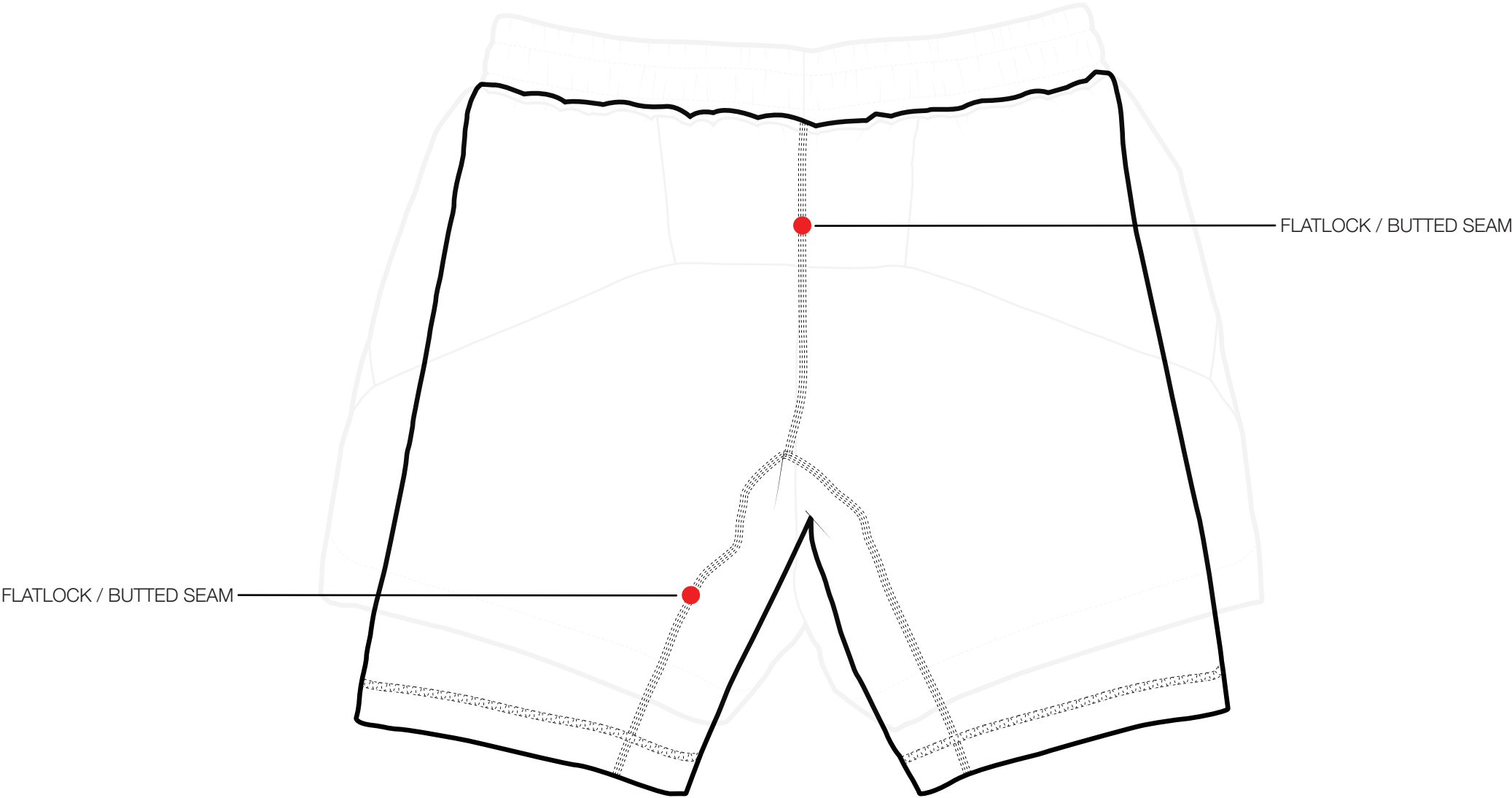
BRAND: TECHPACKIT	STYLE NAME: 2-IN-1 RACE SHORTS	SIZE RANGE: S - M - L - XL
COLLECTION: WOMENS ACTIVE	DESCRIPTION: SHORTS WITH COMPRESSION UNDERLAYER	SAMPLE SIZE: M
STYLE CODE: TPI-AW25EX04	MAIN FABRIC: 100% POLYAMIDE RIPSTOP 80GSM	DATE: 23-04-24



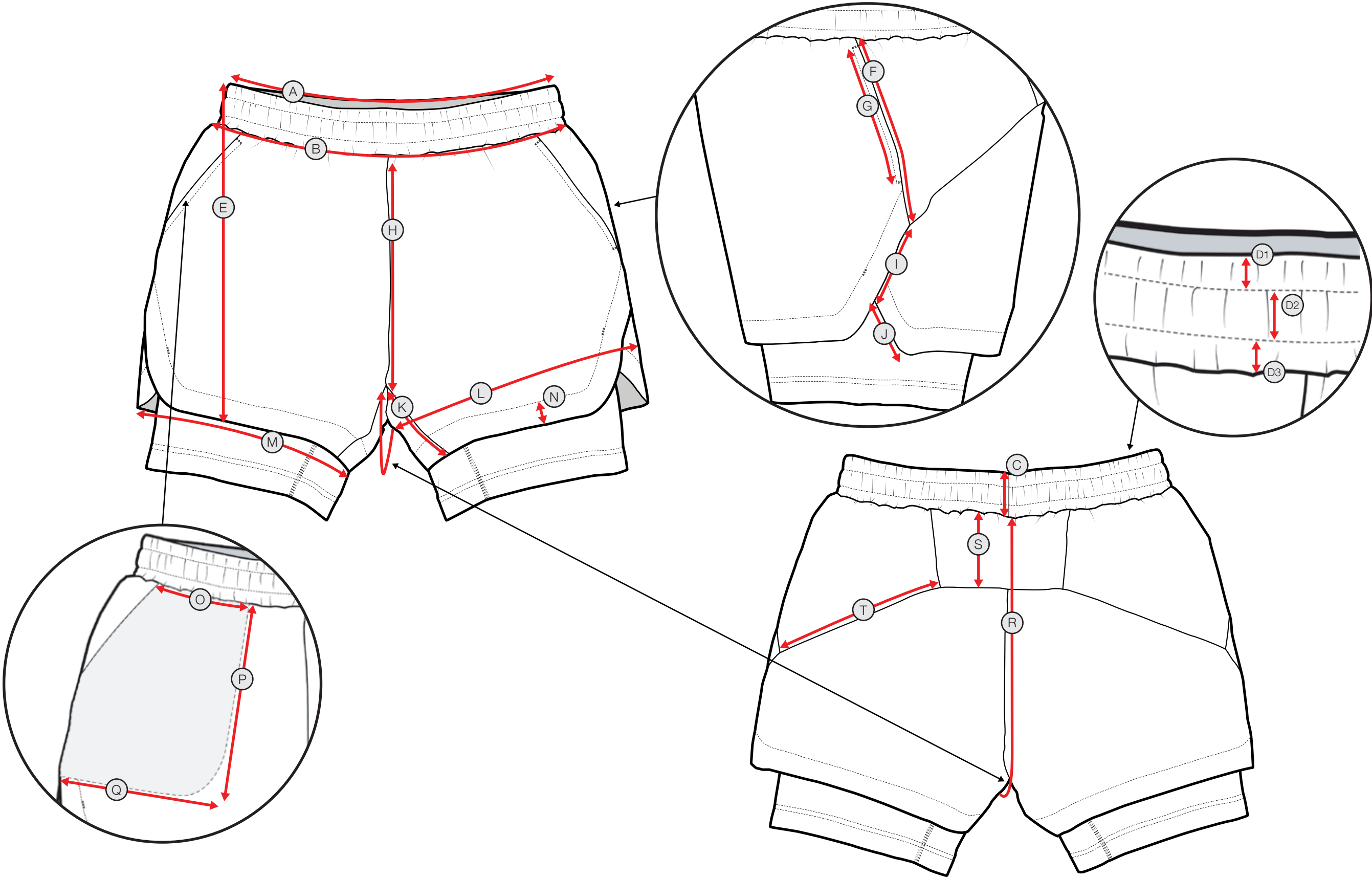
SA = SEAM ALLOWANCE



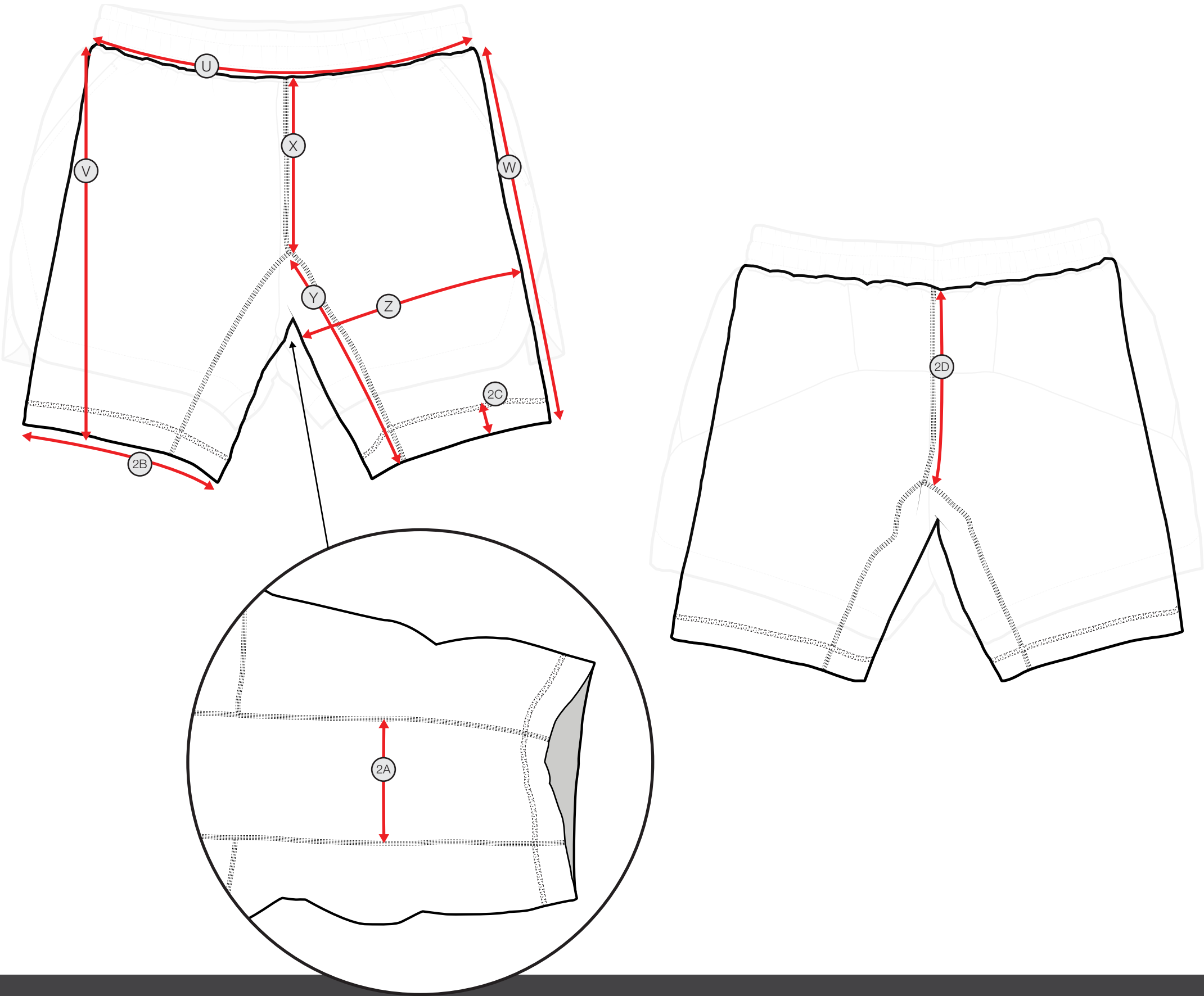
<b>BRAND:</b> TECHPACKIT	<b>STYLE NAME:</b> 2-IN-1 RACE SHORTS	<b>SIZE RANGE:</b> S - M - L - XL
<b>COLLECTION:</b> WOMENS ACTIVE	<b>DESCRIPTION:</b> SHORTS WITH COMPRESSION UNDERLAYER	<b>SAMPLE SIZE:</b> M
<b>STYLE CODE:</b> TPI-AW25EX04	<b>MAIN FABRIC:</b> 100% POLYAMIDE RIPSTOP 80GSM	<b>DATE:</b> 23-04-24



BRAND: TECHPACKIT	STYLE NAME: 2-IN-1 RACE SHORTS	SIZE RANGE: S - M - L - XL
COLLECTION: WOMENS ACTIVE	DESCRIPTION: SHORTS WITH COMPRESSION UNDERLAYER	SAMPLE SIZE: M
STYLE CODE: TPI-AW25EX04	MAIN FABRIC: 100% POLYAMIDE RIPSTOP 80GSM	DATE: 23-04-24



BRAND: TECHPACKIT	STYLE NAME: 2-IN-1 RACE SHORTS	SIZE RANGE: S - M - L - XL
COLLECTION: WOMENS ACTIVE	DESCRIPTION: SHORTS WITH COMPRESSION UNDERLAYER	SAMPLE SIZE: M
STYLE CODE: TPI-AW25EX04	MAIN FABRIC: 100% POLYAMIDE RIPSTOP 80GSM	DATE: 23-04-24



BRAND: TECHPACKIT	STYLE NAME: 2-IN-1 RACE SHORTS	SIZE RANGE: S - M - L - XL
COLLECTION: WOMENS ACTIVE	DESCRIPTION: SHORTS WITH COMPRESSION UNDERLAYER	SAMPLE SIZE: M
STYLE CODE: TPI-AW25EX04	MAIN FABRIC: 100% POLYAMIDE RIPSTOP 80GSM	DATE: 23-04-24

## OUTER SHORT

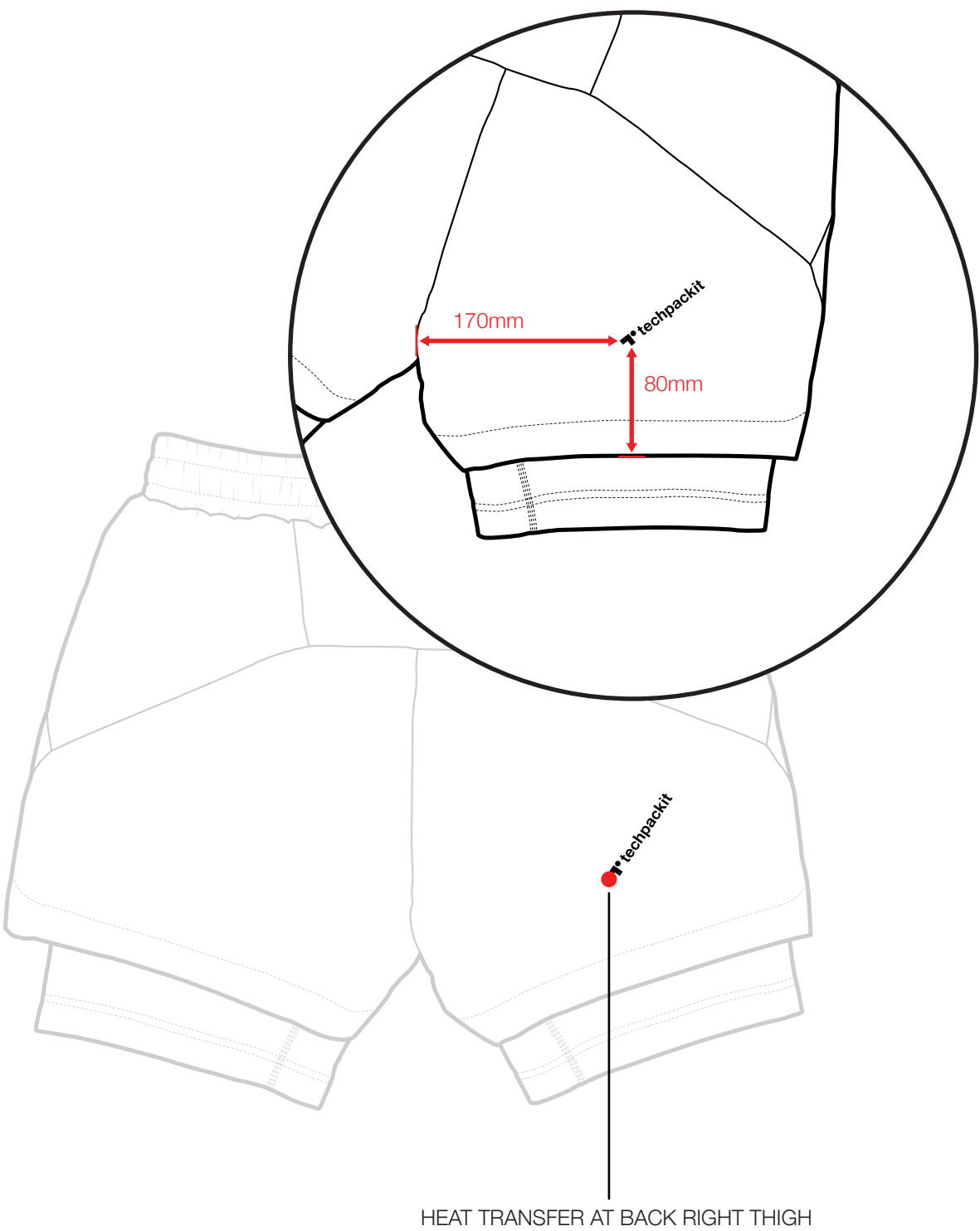
CODE	POINT OF MEASUREMENT	S	M	L	XL	TOL + -
A	1/2 WAISTBAND AT TOP EDGE (RELAXED)	38	40	42	45	1
B	1/2 WAISTBAND AT SEAM	38	40	42	45	1
C	WAISTBAND DEPTH AT CENTRE BACK	5	5	5	5	0
D1	WAISTBAND DEPTH TOP EDGE TO TOPSTITCH	1.5	1.5	1.5	1.5	0
D2	WAISTBAND DEPTH TOPSTITCH TO TOPSTITCH	2	2	2	2	0
D3	WAISTBAND DEPTH TOPSTITCH TO SEAM	1.5	1.5	1.5	1.5	0
E	GARMENT LENGTH (HPW TO HEM)	36	38	40	42	1
F	SIDE PANEL LENGTH WAISTBAND SEAM TO PANEL SEAM	24	26	28	30	0.5
G	SIDE POCKET OPENING LENGTH	20	21	22	23	0.5
H	FRONT RISE TO SEAM (EXCLUDING WAISTBAND)	20	21	22	23	0.5
I	LOWER SIDE PANEL LENGTH PANEL SEAM TO OVERLAP EDGE	15	15	15	15	0
J	UNDERLAPPING PANEL EDGE LENGTH TO HEM	8.5	9.5	10.5	11.5	0
K	INSEAM LENGTH	6	6	6	6	0
L	1/2 THIGH (MEASURED 1CM FROM CROTCH POINT)	8.5	10.5	12.5	14.5	0.5
M	1/2 LEG OPENING	8.5	10.5	12.5	14.5	0.5
N	HEM DEPTH	33	34	35	36	0.5
O	POCKET BAG WIDTH AT TOP EDGE	28	29	30	31	0.5
P	POCKET BAG DEPTH	2.5	2.5	2.5	2.5	0
Q	POCKET BAG WIDTH AT BOTTOM EDGE	11	11	11	11	0.5
R	BACK RISE TO SEAM (EXCLUDING WAISTBAND)	25	25	25	25	0.5
S	CENTRE BACK PANEL DEPTH (AT CENTRE BACK)	15	15	15	15	0.5
T	BACK SIDE PANEL WIDTH AT BASE	32	34	36	38	0.5

<b>BRAND:</b> TECHPACKIT	<b>STYLE NAME:</b> 2-IN-1 RACE SHORTS	<b>SIZE RANGE:</b> S - M - L - XL
<b>COLLECTION:</b> WOMENS ACTIVE	<b>DESCRIPTION:</b> SHORTS WITH COMPRESSION UNDERLAYER	<b>SAMPLE SIZE:</b> M
<b>STYLE CODE:</b> TPI-AW25EX04	<b>MAIN FABRIC:</b> 100% POLYAMIDE RIPSTOP 80GSM	<b>DATE:</b> 23-04-24

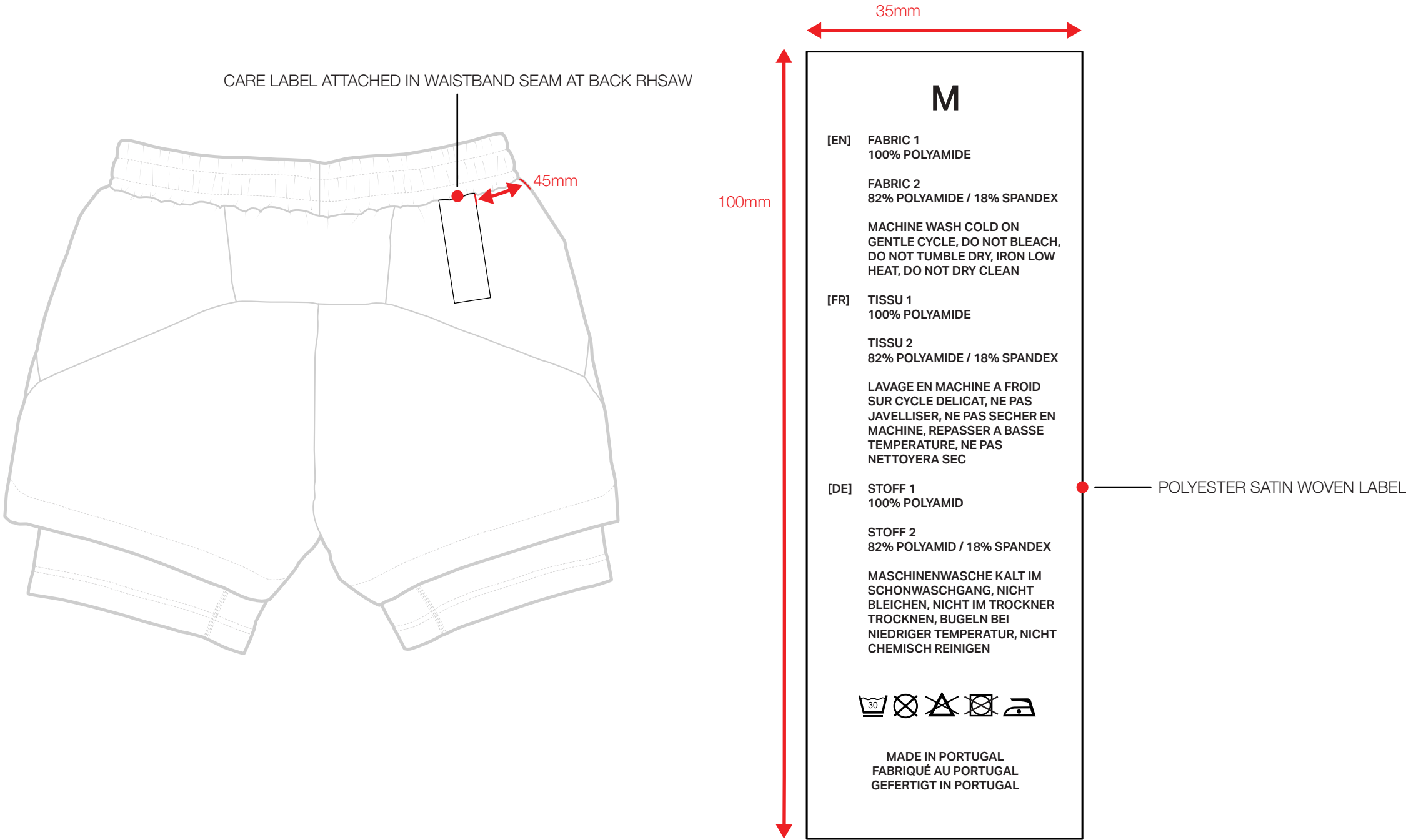
UNDERSHORT

CODE	POINT OF MEASUREMENT	S	M	L	XL	TOL + -
U	1/2 WAISTBAND AT SEAM	38	40	42	45	1
V	GARMENT LENGTH (HPW TO HEM)	43	45	47	49	1
W	OUTSIDE LEG LENGTH	38	40	42	45	1
X	FRONT RISE TO SEAM	43	45	47	49	1
Y	INSEAM LENGTH	16	18	20	22	0.5
Z	1/2 THIGH (MEASURED 1CM FROM CROTCH POINT)	38	40	42	44	1
2A	GUSSET WIDTH	23.5	25.5	27.5	29.5	0.5
2B	1/2 LEG OPENING	29	30	31	32	0.5
2C	HEM DEPTH	20	21	22	23	0.5
2D	BACK RISE TO SEAM	2.5	2.5	2.5	2.5	0

BRAND: TECHPACKIT	STYLE NAME: 2-IN-1 RACE SHORTS	SIZE RANGE: S - M - L - XL
COLLECTION: WOMENS ACTIVE	DESCRIPTION: SHORTS WITH COMPRESSION UNDERLAYER	SAMPLE SIZE: M
STYLE CODE: TPI-AW25EX04	MAIN FABRIC: 100% POLYAMIDE RIPSTOP 80GSM	DATE: 23-04-24

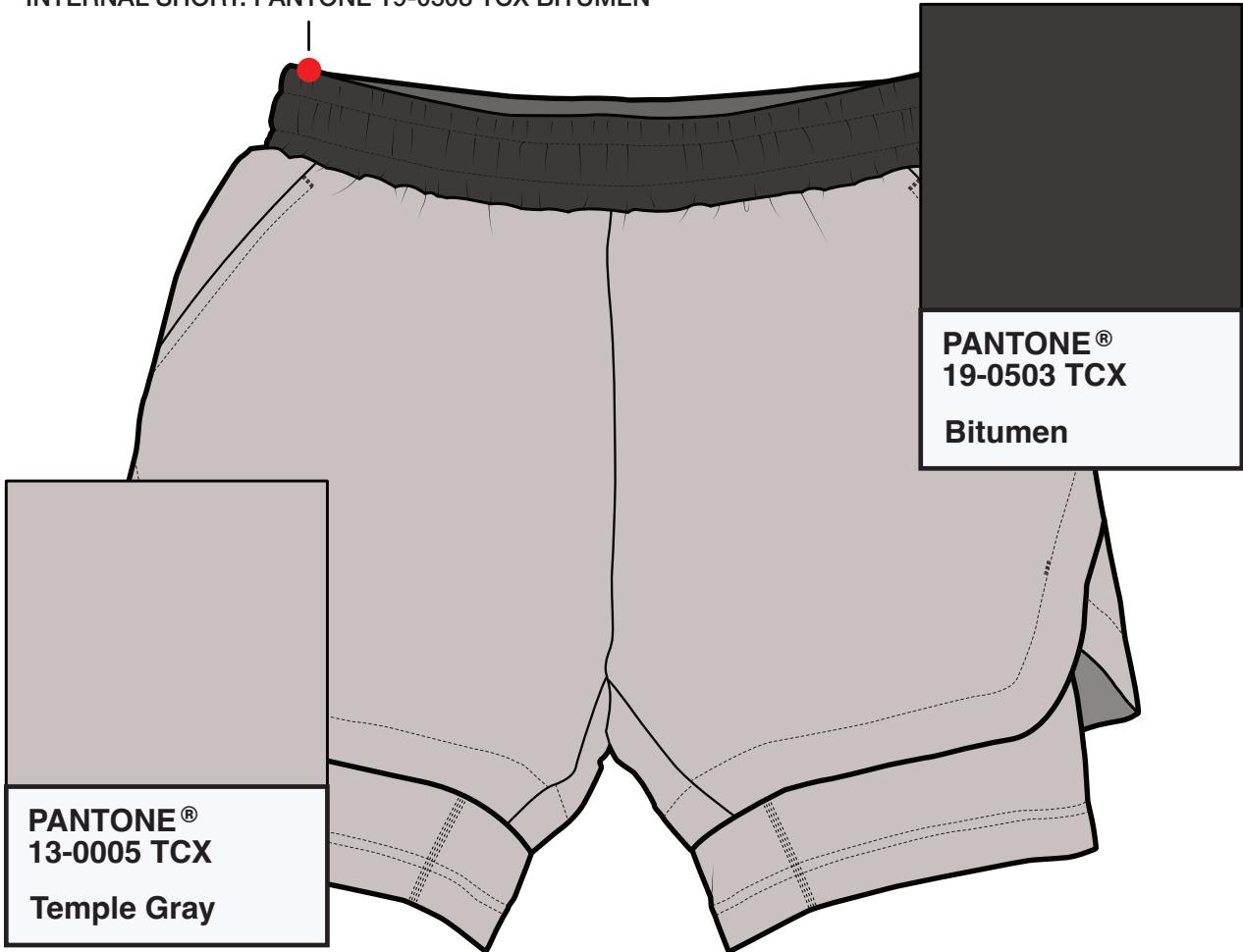


BRAND: TECHPACKIT	STYLE NAME: 2-IN-1 RACE SHORTS	SIZE RANGE: S - M - L - XL
COLLECTION: WOMENS ACTIVE	DESCRIPTION: SHORTS WITH COMPRESSION UNDERLAYER	SAMPLE SIZE: M
STYLE CODE: TPI-AW25EX04	MAIN FABRIC: 100% POLYAMIDE RIPSTOP 80GSM	DATE: 23-04-24



BRAND: TECHPACKIT	STYLE NAME: 2-IN-1 RACE SHORTS	SIZE RANGE: S - M - L - XL
COLLECTION: WOMENS ACTIVE	DESCRIPTION: SHORTS WITH COMPRESSION UNDERLAYER	SAMPLE SIZE: M
STYLE CODE: TPI-AW25EX04	MAIN FABRIC: 100% POLYAMIDE RIPSTOP 80GSM	DATE: 23-04-24

WAISTBAND: PANTONE 19-0503 TCX BITUMEN  
OUTER SHORT: PANTONE 19-0503 TCX BITUMEN  
INTERNAL SHORT: PANTONE 19-0503 TCX BITUMEN

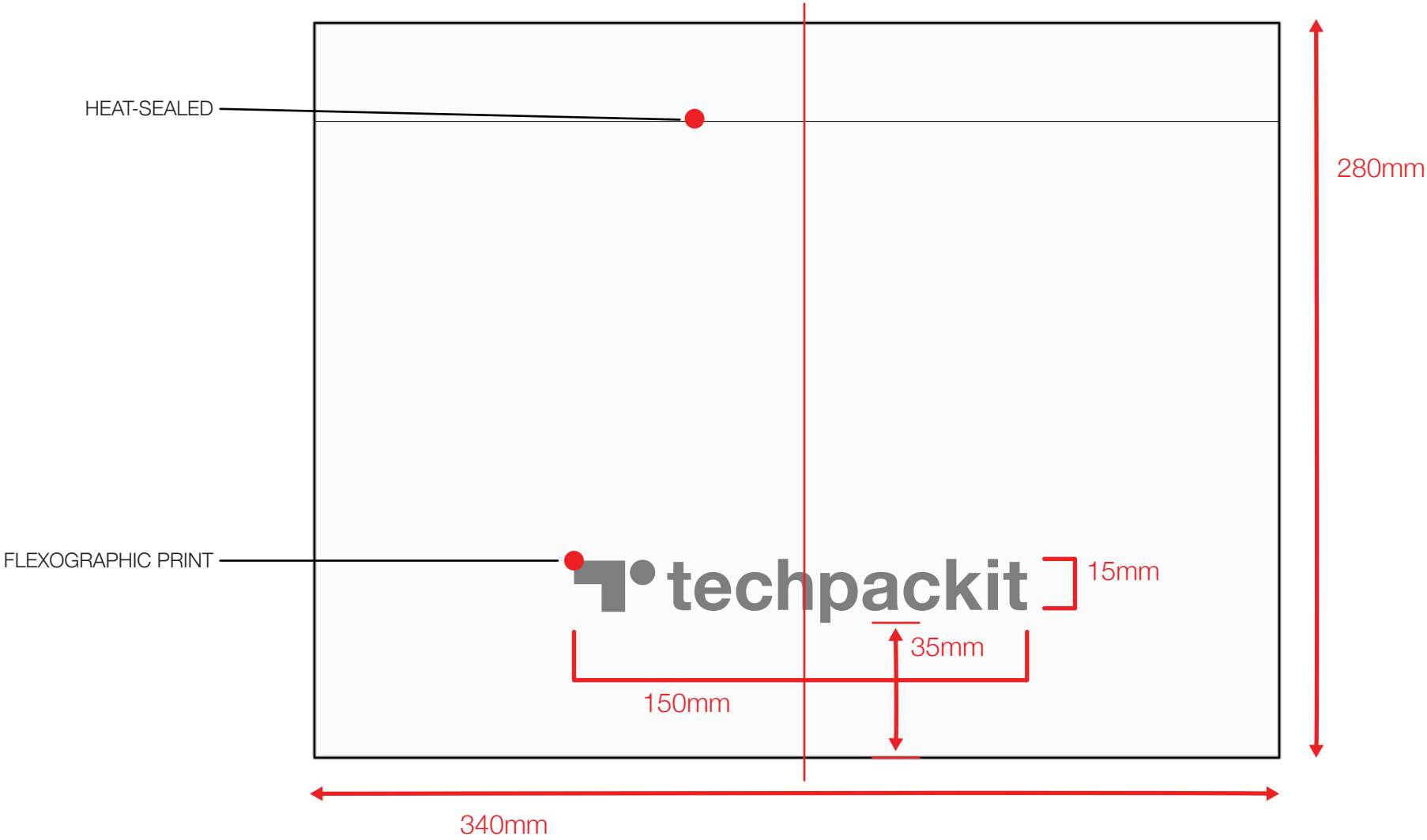


WAISTBAND: PANTONE 19-0503 TCX BITUMEN  
OUTER SHORT: PANTONE 13-0005 TCX TEMPLE GRAY  
INTERNAL SHORT: PANTONE 13-0005 TCX TEMPLE GRAY

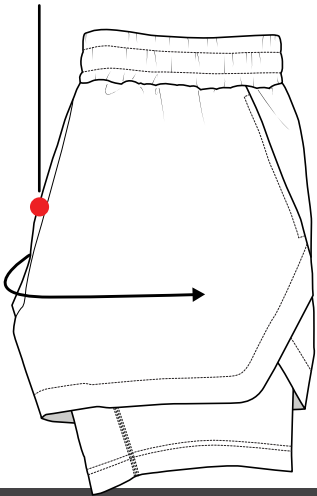




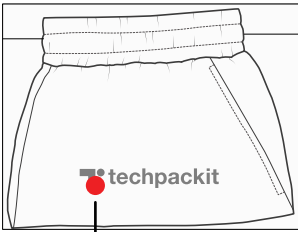
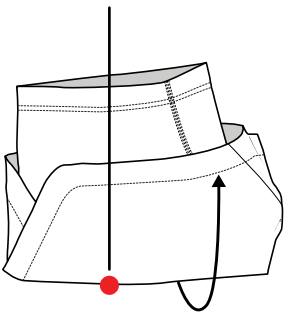
BRAND: TECHPACKIT	STYLE NAME: 2-IN-1 RACE SHORTS	SIZE RANGE: S - M - L - XL
COLLECTION: WOMENS ACTIVE	DESCRIPTION: SHORTS WITH COMPRESSION UNDERLAYER	SAMPLE SIZE: M
STYLE CODE: TPI-AW25EX04	MAIN FABRIC: 100% POLYAMIDE RIPSTOP 80GSM	DATE: 23-04-24



FOLD IN HALF THROUGH CENTRE



FOLD IN HALF LENGTHWISE



PLACE IN POLYBAG WITH FRONT FACING ARTWORK SIDE