



QUALITY CRUISING, REAL COMMUNITY

— The Ranger Tugs Lifestyle —



Contents

Start Here, Go Anywhere	2
World Class Delivery and Training	3
Community Events, Cruises	4
Moments That Matter	5
Fully Equipped, Ready to Cruise	6
The World's Largest Rendezvous	7
Start Your Next Adventure	8
Customer Testimonials	9
Group Cruise to Desolation Sound	10
Your Waterfront Getaway	11
Get in Touch	12

Start Here, Go Anywhere

Our boats hand-built in the USA by skilled craftspeople, carrying on a longstanding tradition of quality boatbuilding in the Pacific Northwest. They're not just built to last—they're built with cruisers in mind. Designed by those who live and breathe the lifestyle, every feature is there to enhance your experience from the very start. Our community? It's the friendliest you'll find in boating. With such a vibrant nationwide community, you're bound to encounter fellow Ranger Tug owners across every waterway.



World Class Delivery and Training

From the moment you join the Ranger Tugs family, you're in good hands. With our Factory Delivery Experience, we don't just hand over the keys; our Factory Training Captains spend two full days with you, making sure you feel at home at the helm and understand each system on board. On delivery day, your boat is ready to go—fueled up and waiting at our dock in the Des Moines Marina.

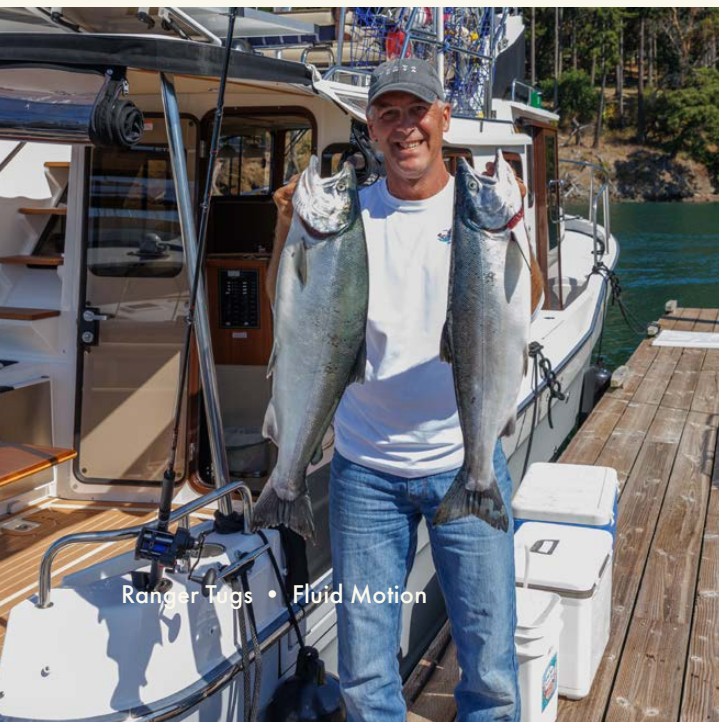
The Factory Delivery Experience is an invitation for new boat owners from across the country to take delivery right here in the Northwest. Start your lifetime of fun on the water by exploring the beautiful waterways of Puget Sound before your boat heads back to your dealership cleaned, wrapped, and ready to cruise.





Community Events, Cruises

We love to throw a good party! Year-round, we invite you to join us for community events and unforgettable cruises. This summer could be your opportunity to explore the Canadian Gulf Islands and Desolation Sound with our factory cruises. As fall approaches, we cap off the season with the world's largest Rendezvous! Boating aboard a Ranger Tug is more than just a pastime; it's a lifestyle full of camaraderie, adventure, and community.



Ranger Tugs • Fluid Motion





Moments that Matter

Boating isn't just about the destination; it's about those rare, breathtaking views and the experiences that only happen while you're out on the water. We build our boats for moments like these—to help you get to those hard-to-reach places comfortably and reliably. It's about making memories with the ones you love, on a vessel you can count on.

Fully Equipped, Ready to Cruise

From the day you step aboard a Ranger Tug, everything you need is at hand, ready to take you to the next horizon. With premium features included on every model like a Garmin navigation suite, bow thruster, electric trim tabs, and more, you'll rest easy as you cruise in comfort. There's no fuss, no expensive add-ons to worry about. Instead, you can focus on planning your next destination, knowing that you're equipped to go wherever the water calls.





The World's Largest Rendezvous

At Roche Harbor, we gather for the largest rendezvous in the world, where over 200 boats and nearly 500 people converge for a celebration unlike any other. It's a chance to connect with fellow boaters and learn from some of the best in the industry. You'll find docks lined with Ranger Tugs, seminars that offer a treasure trove of insights, and the friendliest community in boating.



Start Your Next Adventure

There's no better time than now to dive into your next great escape. Out on the water, every day brings something new to explore. Whether you're planning on the cruise of a lifetime such as the 6000-mile "Great Loop," or traveling to new destinations throughout your local waterways, your Ranger Tug brings all the comfort of home. The ability to trailer your boat produces an entirely new aspect to cruising, bringing inland and far-off shores within reach.





Steve & Jeanie

Testimonial, Ranger Tugs R-31 S

We have purchased two Ranger Tugs. Couldn't be happier. The process from initial contact to being handed the keys is a most wonderful experience! The factory support is legendary, and we are proud to call the Ranger Tug team friends. Attending some of the factory functions is tons of fun and a great way to meet folks that share enthusiasm for a quality-built boat!



Robert

Testimonial, Ranger Tugs R-31 S

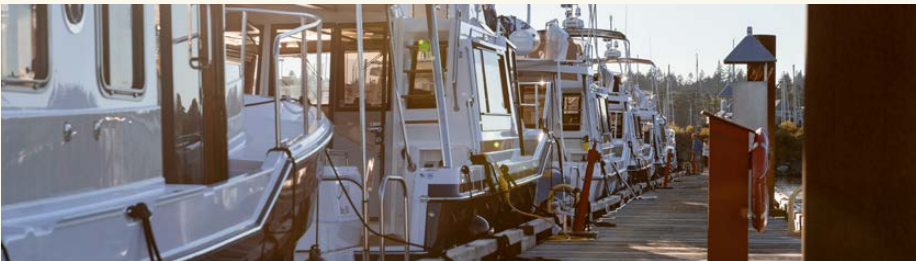
"Graciela and I finished the Great Loop in Tennessee on our (R-31 S) trawler 'Sweet Love' in the summer of 2021 then motored to the top of the Mississippi River in downtown Minneapolis." — "Since purchasing Sweet Love in May, 2019, we have logged 15,000 nm doing the Great Loop and Down East Loop and have locked thru almost 300 locks. In May, 2023 Sweet Love will be loaded on a freighter for Rotterdam, Netherlands to start our European tour." — "If we had to do it all over again, we would get the same boat."



Jim & Lisa

Testimonial, Ranger Tugs R-27, R-29 CB

Ranger Tugs, as a manufacturer, caught our interest from the start of our search for a trailerable trawler because we heard from several owners about the company's support system, one that went beyond the initial sale. Yes, they had the style and high-quality tug we were looking for. Yes, it met our trailerable and options requirements, and as a bonus, it's a great-looking boat. We wanted a boat, made in America, with great customer support.



Group Cruise to Desolation Sound

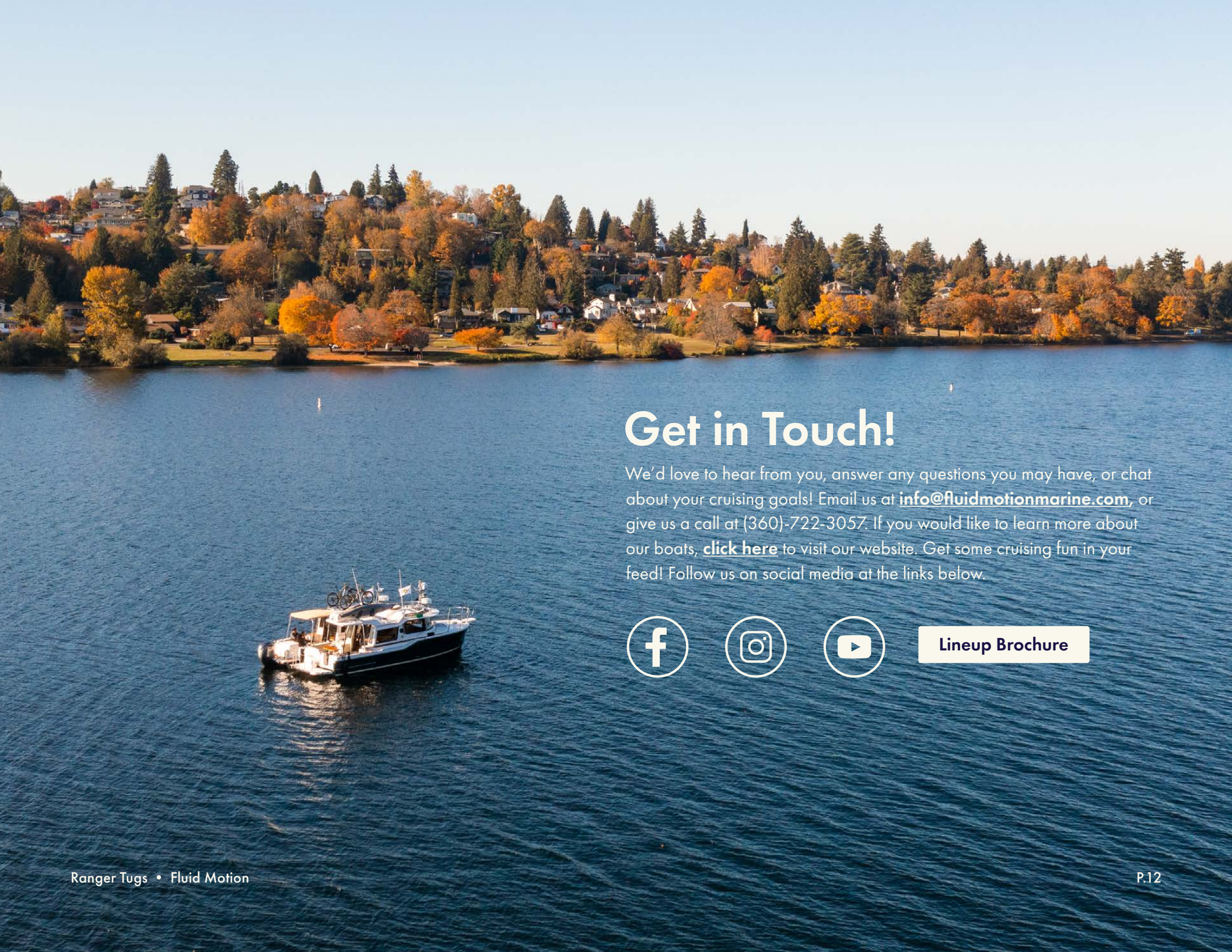
Desolation Sound is a boater's dream destination, and we make that dream a reality. For many, it's a lifelong goal. For our customers, it's a first-year highlight. Each season, we guide over forty boats through these serene, warm waters, showcasing the incredible beauty that this gem of the Northwest has to offer.



Your Waterfront Getaway

Your Ranger Tug is designed to be a home away from home, whether you're in a bustling marina or anchored in solitude. Our boats are crafted with all the comforts needed to make every moment on board a pleasure. Inside the cabin, you'll find a full galley, a dinette that seats four, a head with a shower, and spacious sleeping quarters. It's the perfect setup for adventure and relaxation.





Get in Touch!

We'd love to hear from you, answer any questions you may have, or chat about your cruising goals! Email us at info@fluidmotionmarine.com, or give us a call at (360)-722-3057. If you would like to learn more about our boats, [click here](#) to visit our website. Get some cruising fun in your feed! Follow us on social media at the links below.



Lineup Brochure



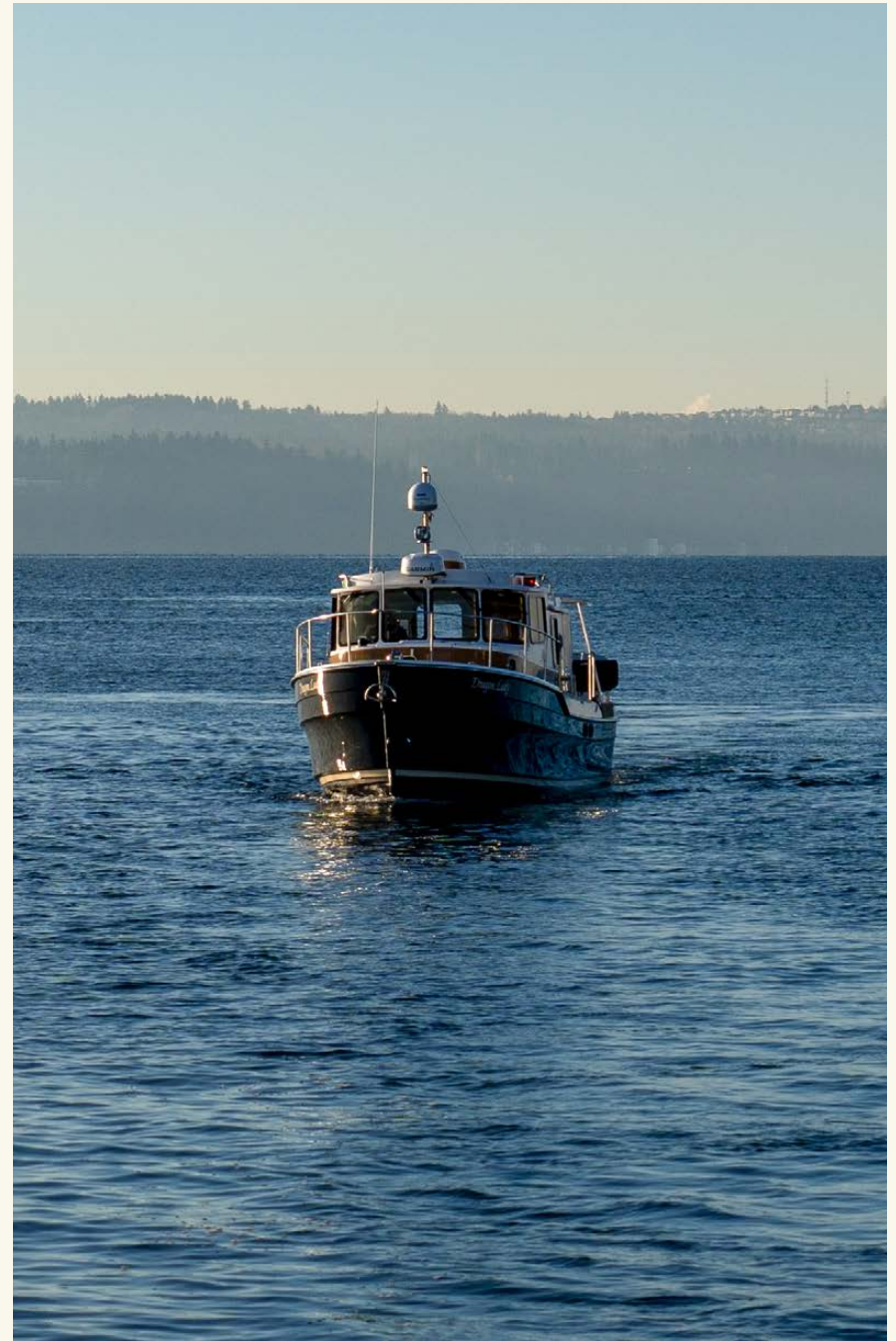
THE FACTORY DELIVERY EXPERIENCE

— South Sound Guide —



Take Delivery of Your New Ranger Tug in Puget Sound

Fluid Motion, the builders of the well-known Ranger Tugs, Cutwater, and new Solara Boats developed and popularized the “Factory Delivery Experience.” Buyers, no matter where their home port is, are given the opportunity to take delivery of their new boat in Puget Sound, near the factories where the boats are produced. Specially trained factory personnel launch the new vessel and over the course of two days, walk through all features and functions of the boat with the new owners. This training not only includes reviewing the new boat systems and electronics, but hands-on procedures like starting the boat, docking, maneuvering, running, trailering when appropriate, and closing the boat down after use. Once the new owners feel comfortable with their new boat, they can take off and cruise the boat in the Puget Sound area for as long as they like. Once their Pacific Northwest adventure is complete, they bring the boat back to the factory docks in Des Moines, WA, and head home. The factory then packages their boat up for shipment and delivers it to their selling dealer, so that they can restart their new boat adventures in their home waters. The Factory Delivery Experience is not only a lot of fun, but it also helps boat owners get accustomed to their new boat. Boaters with all levels of experience participate in this program and really enjoy it. The Factory Delivery Experience is a great way for new boat buyers, whether they are highly experienced or novices just getting started, to familiarize themselves with their boat and have fun exploring a new and different waterway.





Puget Sound is an inland arm of the Pacific Ocean that covers an area of over 1,000 square miles, and is home to numerous islands, bays, and peninsulas. Surrounded by land, the waterways are mostly protected, making this an ideal cruising area for boats of all sizes. Natural harbors and anchorages abound, many of which have shoreside marinas and amenities. The Northern end of Puget Sound connects to the San Juan Islands, an archipelago and world class cruising destination that can also be easily explored by recreational vessels. North of the San Juan islands, boaters can clear into Canada and continue their voyage in the Canadian Gulf Islands and beyond, cruising through

protected waters between Vancouver Island and the mainland. Adventurous boaters can continue all the way to Southeast Alaska with only a few stints across open water. There is a host of fantastic cruises that can be accomplished by boaters of all experience levels here in the Pacific Northwest. Whether it is a short trip around Puget Sound or a prolonged adventure, this experience is both rewarding and a whole lot of fun.

Here a few destination profiles we have compiled to help in planning your Pacific Northwest Factory Delivery Experience.





Starting Point: Des Moines Marina

The factory delivery experience is based in this cozy marina 15 miles south of Seattle, Washington. Factory personnel will bring your finished boat to Des Moines from one of several factories in the Seattle area, launch the boat, and prepare it for your arrival. For those traveling by air, this marina on the Eastern shore of Puget Sound is conveniently located only 5 miles from SeaTac International Airport.

Quartermaster Marina, Vashon Island

5nm as the crow flies but 12nm over water from the Des Moines Marina starting point. While Vashon Island is only a few miles West of Des Moines, the entrance to Quartermaster Harbor is around 7nm SW, and it is another 4nm through the harbor and around to Quartermaster Marina.

Quartermaster Marina offers annual/seasonal moorage, electrical hookups, haul outs for boats under 20,' and a pressure wash/boat cleaning. They also have a pump out station, bathrooms, and showers.

Dockton Forest near Quartermaster Harbor has a host of forested trails that are accessed through Dockton Park. Across the road the trailhead leads to an intricate series of trails. There are over 10 miles of trails and very few signs, but you can pick up a trail map or use this online [guide](#). Those not wanting to stay in the marina can anchor off the park and dinghy ashore.

Burton Village is within steps of the marina, and has a small grocery store, coffee stand, gift shop, and post office. Quartermaster Harbor is a great place to enjoy the relaxed atmosphere and island culture of Vashon Island. Visit: www.quartermastermarinavashon.com and www.kingcounty.gov.

Gig Harbor is a small city on the shore of a well-protected natural harbor located on the Olympic Peninsula. 11nm by water *slightly South but mostly West* from the Des Moines Marina starting point. From the mouth outside of Quartermaster Harbor the entrance to Gig Harbor is approximately 5.5nm West. The narrow entrance to the harbor is only a few hundred feet across, but can be easily navigated with 8-10' depth center channel. Once inside the mouth, the harbor expands at around a mile long and over ¼ mile wide at its widest point.

It is possible to anchor overnight in the protected waters of Gig Harbor, although it can get crowded. There are numerous marinas, some of which provide transient moorage. Jerisich Public Dock has paid overnight moorage, restrooms, showers, power, seasonal water, and a pump out. This protected natural harbor was used by the region's native peoples, including the Puyallup, Nisqually, Suquamish, and Squaxin.



In the 1840s Europeans discovered the harbor while exploring in a small boat, and named the bay Gig Harbor. Gig Harbor currently bills itself as “the Maritime City,” and continues to be a hub of maritime activity. Ferry service was run in and out of the harbor as well as numerous boat builders, boat repair facilities, and fishing boats both commercial and recreational. Gig Harbor hosts several historic buildings, and it is a nice little town to walk around. About a five minute walk from the waterfront, you can also find a West Marine store.

Tides Tavern is a local favorite restaurant/bar housed in a historic building on the waterfront that has its own dock. They serve a variety of pub fare, and specialize in local seafood. The Halibut and chips and the King Salmon burger are favorites, or add Prawns, Salmon, or grilled Halibut to customize one of their salads.

Nautical address: 47° 19' 39"N/122° 34' 40"W. Boats including dinghies can tie up to the dock while patroning the establishment. The dock is first-come, first-serve, and it can get busy in the summer. Note that by Washington state law a “Tavern” is a 21+ establishment, so no minors are allowed inside. Food can be ordered to-go, and consumed on the boat at the dock when minors are onboard. Minors are welcome at the dock but cannot go inside the Tavern.

Visit:

www.cityofgigharbor.net

www.gigharbormarina.com

www.arabellaslanding.com

www.snagaslip.com

www.visitgigharborwa.com

www.tidestavern.com





Tacoma / Point Defiance

The entrance to Point Defiance Marina is only around 3nm from the mouth of Gig Harbor mostly East and slightly South. The **Metro Parks Marina** has transient public moorage with day moorage near the tackle shop for supply and rest stop needs, and another float near Anthony's Restaurant for dining. Additional moorage is available at the boat launch on a first-come, first-served basis, including overnight moorage limited to 72 hours with 30amp power. Facilities include pump out, bait and fishing supplies, ethanol free gasoline (no diesel), a convenience store with a gift shop, and small chandlery. They also rent fishing gear, small boats, and kayaks. From the docks, it is an easy walk or bike ride into the park with the Japanese Garden nearly across the street, and a little further if you want to visit the **Point Defiance Zoo/Aquarium**. If the public docks are full, nearby **Breakwater Marina** has limited transient moorage. **The Tacoma Yacht Club**, located in Point Defiance, has their own docks and clubhouse. Affiliated yacht club members can check with them directly regarding possible reciprocity.

Point Defiance Park was established in 1888 when President Grover Cleveland authorized the federal military reserve to be used as a public park. The first permanent boathouse was built in 1903 by Edwin Ferris who turned it over to the Park Board ten years later. Ferris's beautiful octagonal boathouse/pavilion was an immediate success and still stands today. The 760 acre park is open during daylight hours, and has roads, trails, beaches, and viewpoints all easily accessible from the marina. Washington State Department of Transportation (WSDOT) runs ferry service from Point Defiance to Tahlequah.

Visit:

www.metroparkstacoma.org

www.metroparkstacoma.org

www.pdza.org

www.breakwatermarina.com

www.wsdot.com

www.tacomayachtclub.org

Tacoma / Downtown

From the entrance to Point Defiance Marina, it is about 4nm across Commencement Bay to the entrance into the downtown finger of Tacoma Harbor that continues another mile until it dead ends. **Foss Harbor Marina** just North of the Murray Morgan Memorial Bridge (11th Street) is a full-service marina tucked along the city shoreline. They offer transient moorage, a fuel dock with gas and diesel, kayak and stand-Up paddleboard rentals, a market with beer, wine and other cold beverages, sandwiches, ice cream and more. Their friendly staff is eager to help, and many liveaboards in the marina can provide advice on places to go and things to do in the area.

Under the 11th street bridge (60 feet (18 m) closed/135 feet (41 m) open) and further down the waterway is **Dock Street Marina** located in the heart of Tacoma's downtown Museum District. They offer guest moorage, and personalized customer service including line assistance upon arrival.

The marina is nestled under the shining cone of the famed **Museum of Glass** in Tacoma's revitalized waterfront. The Museum of Glass is one of Washington State's top attractions, and features works by famed glass art pioneers such as Dale Chihuly, Lino Tagliapietra, and Preston Singletary. The marina is adjacent to downtown Tacoma where there are restaurants, shops, galleries, a theater district, and other attractions, many within walking distance of the docks. The **Tacoma Link Light Rail** trolley also runs by both marinas, and can take you free of charge to many locations in and around the city including the **Tacoma Dome** and adjacent **LeMay American Car Museum**. A must see for anyone interested in automobiles, the 165,000 square-foot museum



features an incredible collection of historic American cars along with inspiring rotating exhibits.

The city of Tacoma, named after the local Salish peoples' word for the mountain that provided water to their tribe, now called Mount Rainier, is the third largest city in Washington state. Historically a mill town, railroad terminus, and hub of maritime transportation, Tacoma is a fascinating city with a population of 220,000. To find out more, history buffs can check out the **Washington State History Museum**, walking distance from the waterfront.

Visit:

www.fossharbormarina.com

www.dockstreetmarina.com

www.museumofglass.org

www.americascarmuseum.org

www.traveltacoma.com

www.washingtonhistory.org

Olympia / Downtown

From the Tacoma waterfront it is around 40nm by water (23nm as the crow flies) to downtown Olympia. Olympia is the Washington State capital, with a population of around 56,000. **Swantown Marina** is a large marina in the East Bay of Olympia. They provide transient moorage with online reservations, and also book for the **Port Plaza** dock which is closer to downtown. They have a fuel dock with gas and diesel, and both marinas are walking distance to downtown. **Percival Landing** is a waterfront park with docks run by the Olympia park system. They have transient overnight moorage on a first-come, first-serve basis. One of their docks is adjacent to the popular **Olympia Oyster House** restaurant, and can be used by boats for 4 hours daytime moorage when visiting downtown. The historic Olympia Oyster house has been in business since 1924, has indoor and outdoor dining on the deck, and features oysters, steamers, halibut, salmon, and Dungeness crab. During the summer months, the oyster house has live music.

They typically have a selection of raw oysters in addition to their cooked fare. Try the famous, albeit tiny, Olympia Oysters, the West Coast's only native Oyster, when they are available. On the other side of Percival Landing is the **Olympia Seafood Company** where you can buy local and exotic fresh fish, and shellfish, as well as hot clam chowder, and seafood cocktails to go. Their website also has some great seafood recipes.

Olympia is a great small city to visit. The State provides tours of the historic 1928 capital, and other government buildings. There are a number of restaurants, and breweries around town, and free bus service.

The Farmer's market is right near the marinas and is open 10 a.m. to 3 p.m., Thursdays through Sundays, from April to October. There is a West Marine store in Olympia, but it is over two miles from the marina, so a ride share or taxi might be necessary.



Visit:

www.swantown.portolympia.com

www.olympiawa.gov

www.olympiaoysterhouse.com

www.olympiaseafood.com

www.olympiafarmersmarket.com

www.des.wa.gov



Olympia / Boston Harbor

*From the Tacoma waterfront, 5nm north is **Boston Harbor Marina**. The marina offers free day moorage and offers transient overnight moorage by reservation, call (360) 357-5670. They have a fuel dock with both gas and diesel, kayak rental, and a popular snack shack that features classics like homemade clam chowder, fish and chips, burgers, a kid's menu, and a variety of sandwiches and paninis. They also serve espresso (Batdorf and Bronson's Dancing Goats) and breakfast sandwiches all day.*

The marina store has soft-serve ice cream cones, delicacies like smoked salmon (caught and smoked locally), an extensive selection of craft beer, wine, and vintage sodas. There is also a small gift shop with some home goods, native wear, jewelry, toys, and artwork.

Visit: www.bostonharbormarina.com

McMicken Island / Case Inlet

*McMicken Island in Case Inlet is about 8nm from Boston Harbor. If you are interested in anchoring out or using a mooring buoy, this park with no docks was recommended by a South sounder. **McMicken Island Marine State Park** is a 222-acre park with 1,661 feet of saltwater shoreline. The small Island and park are on Harstine Island, and only accessible by boat. At low tide you can walk from Harstine to McMicken Island. Moor in the island's cove, check out the tombolo and take the 1-mile hiking trail through the woods. This is an ideal spot for fishing, crabbing, clamming, and oystering when in season (and watch out for local bald eagles). There are supposed to be 5 mooring buoys around the island available on a first-come, first-serve basis. Moorage fees are charged year-round for mooring at docks, floats, and buoys from 1:00 PM. to 8:00 AM. Access to many state parks requires a Discover Pass which can be purchased online, by phone, or in person at some parks. For details, visit www.discoverpass.wa.gov, www.parks.wa.gov, or call (866) 320-9933.*



Ranger Tugs • Fluid Motion

Jarrell Cove

*From McMicken Island head 3nm to Dougal Point and then another 2nm around the point to the entrance to Jarrell Cove State Park. This 67-acre, marine camping park with 3,500 feet of saltwater shoreline on Harstine Island is a watery haven and the management center for five other parks/properties, including Harstine Island, McMicken Island, Stretch Point, Eagle Island, and Hope Island. Harstine Island is a day-use property with beach access via a half-mile trail. The other parks are accessible only by boat and offer buoys for moorage. **Jarrell Cove** has 14 moorage buoys and 650 feet of moorage and dock space. Moorage fees are charged year-round for mooring at docks, floats, and buoys from 1 p.m. to 8 a.m. Daily and annual permits are available. For more information, call (360) 902-8844. This park offers phone in Buoy registration. When you arrive at a buoy, call the phone number on the mooring ball, provide your buoy number and length of stay (3 night maximum), and then pay with your credit or debit card or provide your Annual Boat Moorage permit number. There is a \$4.50 convenience fee to register by phone, and all buoys are first-come, first-serve, at \$15 per night. Access to many state parks requires a Discover Pass which can be purchased online, by phone or in person at some parks. For details, visit www.discoverpass.wa.gov, www.parks.wa.gov, or call (866) 320-9933.*

Other notable parks and anchorages in the South Sound are Cutts Island, Filucy Bay, and Penrose Point Park (As of 6-2023 boats can still moor at Penrose, but the shoreside is basically closed with no restroom facilities or pump out).



Oro Bay / Anderson Island

From Jarrell Cove 15nm around Dougal Point past McMicken Island South to the tip of Anderson Island, then another mile to the entrance to Oro Bay. Buoys mark the entrance into the more protected of two possible anchorages here. The small bay is mostly a tranquil spot to relax, perhaps explore in a dinghy or kayak. The derelict hull of the Ocean City, a 189-foot, 50-car ferry, built in 1928, rests in the bay, and there are a few yacht club outstations on the point. There are some parks and trails on the island including Jacob's Point Park, adjacent to the anchorage. Check the Anderson Island Parks website for more info, and remember that some of the parks and trails are not pet friendly.

Visit: www.andersonislandparks.org



Narrows Marina

From the entrance to Oro Bay 8.5nm NW before turning around Days Island and heading for the entrance to Narrows Marina. This family owned and operated full-service marina includes 13 spaces for overnight transient moorage on a first-come, first-serve basis. The unique location was formerly a lumber mill and some of the historic buildings from the early 1900's still remain. They have a fuel dock with both gas and diesel, and a bait and tackle store where you can buy marine supplies, snacks, beer and wine, cold beverages, ice, and more. The bait shop is also a certified vendor for Discovery Passes, and Washington State Hunting and Fishing licenses. Whether overnighting or using the free 3-hour daytime guest moorage dock you can enjoy a local craft beer or a meal with a view at the Narrows Brewing Company and Boathouse19 Restaurant. Narrows Marina is located Southeast of the twin spans of the Tacoma Narrows Bridge which connects the mainland near Tacoma to the Olympic Peninsula.

Ranger Tugs • Fluid Motion

The original bridge was famously known as "Gallopig Gertie" because of a faulty design. Wind interacted with the bridge creating a vortex that led to "torsional flutter" which destroyed the bridge in November, 1940 only four months after it had been opened.

Visit:

www.narrowsmarina.com

www.narrowsbrewing.com

www.anthonys.com

www.youtube.com/watch?v=y0xohjV7Avo

www.wsdot.wa.gov

There are plenty of other marinas and anchorages in South Puget Sound, and we have just mentioned a few locations that can be covered in roughly a week cruise. *From Narrows Marina it is around 16 nautical miles back to Des Moines marina.*



Get In Touch!



We'd love to hear from you, answer any questions you may have, or just chat about your cruising goals! Email us at info@fluidmotionmarine.com, or give us a call at (360) 722-3057. If you would like to learn more about our boats, [click here](#) to visit our website. Get some cruising fun in your feed! Follow us on social media at the links above.

Published June, 2024