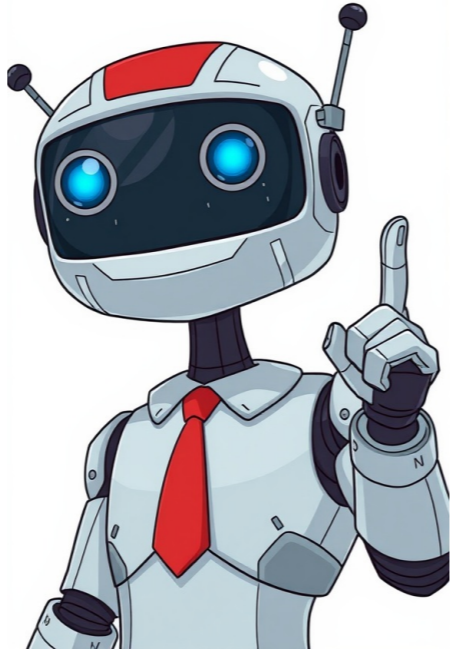


[Click Here](#)



Share — copy and redistribute the material in any medium or format for any purpose, even commercially. Adapt — remix, transform, and build upon the material for any purpose, even commercially. The licensor cannot revoke these freedoms as long as you follow the license terms. Attribution — You must give appropriate credit , provide a link to the license, and indicate if changes were made . You may do so in any reasonable manner, but not in any way that suggests the licensor endorses you or your use. ShareAlike — If you remix, transform, or build upon the material, you must distribute your contributions under the same license as the original. No additional restrictions — You may not apply legal terms or technological measures that legally restrict others from doing anything the license permits. You do not have to comply with the license for elements of the material in the public domain or where your use is permitted by an applicable exception or limitation . No warranties are given. The license may not give you all of the permissions necessary for your intended use. For example, other rights such as publicity, privacy, or moral rights may limit how you use the material. Mobile Legends: Adventure is an idle RPG mobile game made by Moonton, the creators of the MOBA, Mobile Legends. ML: Adventure features heroes from their MOBA, but is entirely different in terms of gameplay. The object of this idle RPG is to assemble a team of 5 heroes, increase their power, and beat levels of enemy teams. In this guide, we give you tips and tricks to help you in Mobile Legends: Adventure. Resources are scarce in Mobile Legends: Adventure. The majority of the resources you earn through time-based methods such as idle rewards. Therefore, we recommend you spend your resources wisely. In order words, focus your resources on specific heroes. Try to assemble a team you like, and focus on those heroes through a lot of the campaign. Doing this makes you progress faster and more efficiently than were you upgrading a ton of different heroes. You can still power up a new hero to the level of your current team if you pull a hero you wish to use, but we do recommend not spending resources on too many heroes. If you wonder which heroes are the best to spend resources on, check out our guide on the best heroes in the game to get an idea of some great ones. The Friends system in ML: Adventure allows you to send and receive friendship points, known as Hearts in-game. You can have a maximum of 30 friends at a time and send Hearts to your friends daily. 10 Hearts can be exchanged at the Wishing Shrine for a new hero. Therefore we strongly recommend you fill up your friend list with as many active players as you can. Using this method will quickly get you a lot of new heroes for free. To get friends quickly, go to the world chat and write "add me", or add people writing the same or anything else for that matter. As with any idle RPG mobile game out there, you will eventually find yourself stuck at a specific level. Once this happens, there are multiple things you can do, including summoning new heroes and so forth. However, what you might want to start off by doing instead is other activities in the game. The ones that will net you the best rewards quickest are Tower of Babel and Crusade. You can also do Labyrinth for Equipment Coins and gear, and Arena of resources and diamonds. Doing these things will undoubtedly increase the power of your team and thereby your chances of beating that specific level. Related to the previous tip, if you are stuck at a specific level, rearranging your team is a method that is often overlooked. Even though you might not believe it makes that big of a difference, the placement of each hero can be the difference between victory and loss. Try to move damage-dealers closer to the action, this often results in an overall higher damage output of those heroes throughout the fight, as they charge their initial super move faster if they can survive, of course. Besides rearranging the same five heroes' position, you might want to restructure your team faction-wise as certain combinations of hero powers result in powerful buffs to your entire team. Learn more about this in our faction advantages guide. On the far left of the main screen resides the Market. Here, you can purchase different useful items, including heroes and hero experience. Some items are for sale for gold and some for diamonds. We recommend you always buy the common summoning ticket for 10k gold, and whatever amount of Advance Stone is for sale. The Market will have the same items for sale forever until you reset it. Every 4 hours, you receive a free reset allowing you to purchase new goods. Use this free reset as often as you can as and stock up on Advance Stone as it becomes scarce later on in the game. Common summoning tickets are useful because they almost guarantee a 1 or 2-star hero. You should dismantle these heroes for valuable items including Shrine Crystal. Once you've collected 20k Shrine Crystal, you can buy 50 5-star hero fragments and thereby a guaranteed 5-star hero. Below you can watch a video of this exact method, just done with diamond resets instead of waiting 4 hours for each reset. Upgrading your heroes' power is essential in Mobile Legends: Adventure to progress through the game. There are several ways to do this, including leveling up heroes, farming better gear, enhancing gear, upgrading runes, and fusion. You should take advantage of all these methods when trying to increase the power of your team. Learn more about this in our guide on upgrading heroes. You are now ready to take on the world of Mobile Legends: Adventure! At the Wishing Shrine, Premium Summon is one route for you as an Adventurer to summon heroes to your party. It's the most standard way of summoning, and generically speaking yields the best rates at the cheapest cost, per a diamonds spend / hero obtained basis. Unlike with Prophecy Summon or Sacred Oath, Adventurers only have modest control over which hero is summoned, in the form of a Wishlist. Summonable Heroes When an Adventurer successfully summons normal-Type heroes (Elemental, Tech, Martial, Light, Dark), the ones that are summoned are randomly selected from their Wishlist. You have no control over which hero in your Wishlist is summoned, nor which Type they are from; your only control is selecting who you want within your Wishlist. This is a composite "gacha - user directed" mechanic, since the player can set their Wishlist, though there's still an element of chance as to whether they get their most desired selections from that pool. You have the ability to add Hybrid heroes to the Wishlist, and they can only represent one of their two types at a given time in the gacha mechanic. Obtaining hybrids from Premium Summon when they're in a Wishlist is normal, although it was not originally built that way when the first hybrid, Mecha Layla , was released. Since then, MLA has become more generous with allowing Adventurers to summon hybrid heroes. Very occasionally, you may receive an Order/Chaos hero at random. You have no control over when this happens, and it's relatively rare. Though it does happen. Rates The rates are as below: # % Description 1 4.6% 5-Star Hero either: normal-Type heroes from Wishlist Order/Chaos heroes (rare) 2 43.7% 3-Star Hero 3 51.7% trash converted into Shrine Crystals in the Dismantle Shrine Costs Number Cost (Diamonds) Cost (Tickets) 10 2500 1 SPECIAL NOTE! IT IS NEVER RECOMMENDED TO SPEND 300 GEMS FOR A SINGLE SUMMON! (bad idea) That is inefficient use of diamonds. At the Wishing Shrine, Premium Summon is one route for you as an Adventurer to summon heroes to your party. It's the most standard way of summoning, and generically speaking yields the best rates at the cheapest cost, per a diamonds spend / hero obtained basis. Unlike with Prophecy Summon or Sacred Oath, Adventurers only have modest control over which hero is summoned, in the form of a Wishlist. Summonable Heroes When an Adventurer successfully summons normal-Type heroes (Elemental, Tech, Martial, Light, Dark), the ones that are summoned are randomly selected from their Wishlist. You have no control over which hero in your Wishlist is summoned, nor which Type they are from; your only control is selecting who you want within your Wishlist. This is a composite "gacha - user directed" mechanic, since the player can set their Wishlist, though there's still an element of chance as to whether they get their most desired selections from that pool. You have the ability to add Hybrid heroes to the Wishlist, and they can only represent one of their two types at a given time in the gacha mechanic. Obtaining hybrids from Premium Summon when they're in a Wishlist is normal, although it was not originally built that way when the first hybrid, Mecha Layla , was released. Since then, MLA has become more generous with allowing Adventurers to summon hybrid heroes. Very occasionally, you may receive an Order/Chaos hero at random. You have no control over when this happens, and it's relatively rare. Though it does happen. Rates The rates are as below: # % Description 1 4.6% 5-Star Hero either: normal-Type heroes from Wishlist Order/Chaos heroes (rare) 2 43.7% 3-Star Hero 3 51.7% trash converted into Shrine Crystals in the Dismantle Shrine Costs Number Cost (Diamonds) Cost (Tickets) 10 2500 1 SPECIAL NOTE! IT IS NEVER RECOMMENDED TO SPEND 300 GEMS FOR A SINGLE SUMMON! (bad idea) That is inefficient use of diamonds. View source These are the types of Summoning: Costs Every type of summoning has its own costs Key * Can only be purchased twice (7,000 diamonds total) ** Purchase Limit is normally 3 (\$60 total for 30 summons) *** Monthly limitation based on Adventurer's number of awakened heroes. Limitations to Heroes and Rates In Divine Supplication, you can normally only acquire the hero featured, and no other heroes. The rate is 2%. Other than that, there's 50 set of 5-Star Hero Fragments at 2%. 1% chance for Advanced Equipment Chest, which gives Mythic Equipment (at random). The rest is other items. In Premium Summon, heroes are picked from your Wishlist. The rate is 4.6%. You can also have a chance to pick up Order/Chaos type if you're lucky. This is built into the 4.6%. They can NOT be added to Wishlist. The other 95.4% is trash or fusion fodder. For Miracle Summon, you can only get heroes of a certain (normal) Faction that are on your Wishlist. The rate is 4.6%. With Prophecy Summon, a hero is picked and if you get a 5-Star Hero, the hero you get is guaranteed to be your chosen. The rate is 4.6%. You can NOT select Order/Chaos. You can ONLY summon using gems. You're limited on a monthly basis Sacred Oath is very unique. You select you desired 5-Star Hero, and the hero you get is guaranteed to be your chosen. The rate is a staggeringly low 2%. Finally, Friendship Summon only picks from your Wishlist. The rate is 4.6%. You can NOT get Order/Chaos. You can NOT summon using gems. Friendship Points are the only way to summon. The other 95.4% is trash or fusion fodder. Community content is available under CC-BY-SA unless otherwise noted.