

L I F T C O L L E C T I O N



PASSENGER COLLECTION

-A Solution For Every Level-



PASSENGER COLLECTION OVERVIEW

					
					
					
					
					
Model	LC. HYD 600	LC. DROP 630-800	LC. MRL 630-830	LC. DROP 1k-1.6k	LC. MR 1k-2k
Model Type	Passenger - DDA	Passenger	Passenger	Passenger- Stretcher	Passenger- Stretcher
Installation Type	Built on-site	Pre-built Crane in	Built on-site	Pre-built Crane in	Built on-site
Building Class	Low-rise	Low to Mid Rise	Low to Mid Rise	Mid to High Rise, High Capacity	Mid to High Rise, High Capacity
Shaft Type	Shaft by client	Structural steel support frame – To be finished by client	Shaft by client	Structural steel support frame – To be finished by client	Shaft by client
Door Type	Automatic side opening 2 panel doors	Automatic side opening 2 panel doors	Automatic side opening 2 panel doors	Automatic centre opening 2 panel doors	Automatic centre opening 2 panel doors
Door Configuration	Single sided, through car 180 degrees	Single sided, through car 180 degrees	Single sided, through car 180 degrees	Single sided, through car 180 degrees	Single sided, through car 180 degrees, Adjacent 90 degrees
Drive	Hydraulic – Rope over	Gearless Traction MRL	Gearless Traction MRL	Gearless Traction MRL	Gearless Traction
Speed	0.5	1m/s-2.5m/s	1m/s	1m/s-2.5m/s	1m/s
Machine Cabinet	Yes – Located with in 5m of the lift on G floor	Located in Top Level Door	Located in Top Level Door	Located in Top Level Door	Yes- Located within 5 m of the lift top floor
Lifting Capacity	630kg	630-800kg	630-830kg	1000-1600kg	1000-2000kg
Travel Max (m)	12	15	15	35	35
Stops	4	Up to 6	Up to 6	Up to 10	Up to 10
Sizes	1	2	2	5	5
Headroom (mm)	2700	3900-4300	2800-3600	4000-4300	2800-4300
Pit (mm)	400	1250-1500	650-1200	1250-2000	650-1200
Installation time	6 days per 2 landings	2 days per 2 landings	6 days per 2 landings	2 days per 2 landings	6 days per 2 landings
Lead time	24 weeks	16 weeks	24 weeks	19 weeks	24 weeks
Compliance	1735-2 & 1735-12	AS 1735-1 & 1735-12	AS 1735-1 & 1735-12	AS 1735-1 & 1735-12	AS 1735-1 & 1735-12

LOW-RISE DDA PASSENGER LIFTS



LC. HYD 630
Low-Rise DDA Lift

SPECIFICATIONS LC. HYD 630

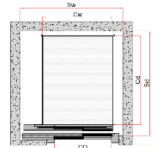
Model	LC. HYD 630
Model Type	Low rise passenger (Disability Access)
Manufacturing Location	Europe
Shaft Type	Shaft by client / building tolerance -0mm+20mm
Door Type	Automatic side opening 2 panel doors
Door Configuration	Single sided, through car 180 degrees (2)
Drive	Hydraulic
Speed	0.5m/s
Machine Cabinet	Hydraulic - Yes (700w x 364d x 1400h)
Lifting Capacity	630kg
Travel Max (m)	12
Sizes	1
Stops	2-5
Headroom (mm)	2700
Pit (mm)	400
Location	Indoors
Installation Type	Built on-site
Safety Sensors	Doors: Static Light Curtain
Emergency Power	Battery Powered
Emergency Phone	4G emergency phone handset with sim located at cabin controls– first year included
Installation time	6 days per 2 stops
Servicing recommended	<p>A minimum of 1 service per 3 months is required by AS1735, the manufacturer & Safe Work Australia. Additional servicing maybe required for the following situations.</p> <ul style="list-style-type: none"> -Heavy usage -Essential mobility access -Coastal/harsh/Warmer conditions -Older lift (5+ years) -Damage from environmental factors like flooding.
Warranty	1 year
Manufacturing + Shipping Lead time	24 weeks
Compliance	<p>Lift Code: AS1735-1 (Lifts, escalators and moving walks – General requirements</p> <p>Lift Code: AS1735-12 Facilities for persons with disabilities - Accessible lift design (DDA)</p>
Power Requirements	<p>Separate Independent circuit to controller location with 3m of tail</p> <p>3-Phase: 415v 20a</p>
Structural Requirements	Structurally Certified Pit & Shaft true/ plumb as per LC & your engineer's specifications
Retro-fit Requirements	Contact us for a complimentary site assessment to determine suitability for retro-fitting this lift into your building.

SIZING LC. HYD 630

The following specification details are for the LC. HYD 630 lift with a sliding door configuration in a masonry shaft. Specific plans will be provided per project; please do not build to the following specifications.

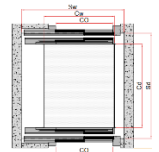
Size	CW (mm)	CD (mm)	DO (mm)	SW (mm)	SD (mm)	KG
1	1100	1400	800	1460	1650	600

Single Sided Entrance (1)



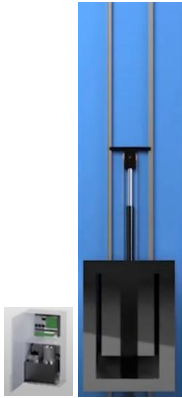
Size	CW (mm)	CD (mm)	DO (mm)	SW (mm)	SD (mm)	KG
1	1100	1400	900	1460	1740	600

Through car 180 degrees (2)



SELECTIONS LC. HYD 630

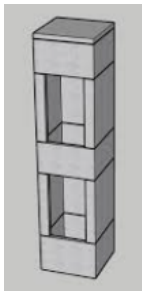
Drive



Included: Standard

Hydraulic Rope over

Shaft



Included: Standard

No Shaft: Shaft is to
be built by
client/builder

Landing & Cabin Doors Type



Included: Standard

Side opening, 2
panels: Steel



Upgrade

Side opening, 2
panels: Steel
frame with glass

SELECTIONS LC. HYD 630

Landing Doors Colour



Included: Standard

Painted any Ral
Colour: Most popular
colours are black,
white, silver,
anthracite grey



Upgrade

Hairline stainless
steel



Upgrade

Coloured stainless
steel
**Additional 2 weeks
manufacturing*



Upgrade

Mirror finish stainless
steel

Landing Door Controls



Included: Standard

Steel button
mounted on door
frame. Finished the
same as the door



Upgrade

Remote: black glass
touch button with lcd
screen & door lock.

Cabin Wall Finish Selection

Cabin Wall Type with Stainless steel finish



Upgrade

Stainless
-Single panel
-Single finish:
Stainless steel



Upgrade

Millenium
-3 vertical panels
-Dual finish: Stainless
steel & mirrors



Upgrade

Alhambra
-Single panel
-Single finish:
Stainless steel



Hairline Stainless
Steel (std)



Leather effect
Stainless Steel



Linen effect Stainless
Steel



Gold Alhambra
pattern mirror steel



Coloured Stainless
Steel: Bronze is
popular
**Additional 2 weeks
manufacturing*



Other at Request

SELECTIONS LC. HYD 630

Cabin Wall Type with Glass Finish



Upgrade

Panoramic
-Single panel
-Combination finish:
Glass & wall finishes
as above other



Clear Glass (std)



Frosted



Light Grey



Dark Grey

Additional Wall Finish Upgrades

*Upgrade for all wall types



Half Mirror Column



Half Mirror



Full Length Mirror
Column



Other at request

Cabin Profiles



Included: Standard

Hairline stainless
steel



Upgrade

Painted any Ral
Colour



Upgrade

Mirror finish stainless
steel



Upgrade

Coloured stainless
steel
*Additional 2 weeks
manufacturing



Upgrade

Polished stainless steel

Cabin Ceiling



Included: Standard

4 led spotlights



Upgrade

2 Led Strips



Upgrade

Circle matrix
Fluorescents



Upgrade

Frosted glass diffused
square led

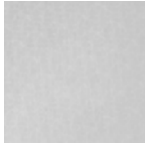


Upgrade

Frosted glass diffused
diamond led

SELECTIONS LC. HYD 630

Cabin Ceiling Colour



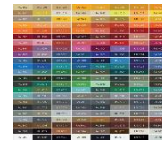
Included: Standard
Polished stainless steel



Upgrade
Hairline stainless steel



Upgrade
Gold Mirror stainless steel



Upgrade
Painted any Ral Colour

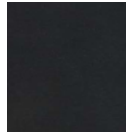


Upgrade
Coloured stainless steel
**Additional 2 weeks manufacturing*

Cabin Flooring



Included: Standard
Steel floor with a 5mm or 20mm set down for client to lay their own.
**Client to confirm*



Included: Standard
Non-Slip Black Rubber



Included: Standard
Non-Slip Alto Grey Rubber

Cabin Control Types



Included: Standard
Full length controls



Upgrade
Compact: Half height controls



Upgrade
DMG Cut: Half height controls

Cabin Controls



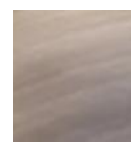
Included: Standard
Hairline Stainless Steel



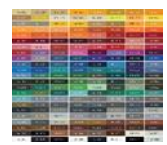
Upgrade
Gold Mirror stainless steel



Upgrade
Coloured stainless steel
**Additional 2 weeks manufacturing*



Upgrade
Mirror finish stainless steel



Upgrade
Painted any Ral Colour

Accessories



Included: Standard
Emergency phone on the cabin controls panel



Included: Standard
Handrail: Stainless steel or painted any RAL colour handrail



Upgrade
Handrail: Gold Stainless Steel



Upgrade
Handrail: Painted any Ral Colour

LOW-MID RISE PASSENGER LIFTS



LC. DROP 630-800

Low-Mid Rise Passenger Lift



SPECIFICATIONS LC. DROP 630-800

Model	LC. DROP 630-800
Model Type	Low-mid rise passenger
Manufacturing Location	Asia
Shaft Type	Structural steel support frame – to be finished by client / building tolerance -0mm+20mm
Door Type	Automatic side opening 2 panel doors
Door Configuration	Single sided, through car 180 degrees
Drive	Gearless electric traction
Speed	1m/s-2m/s
Machine Cabinet	No-MRL
Lifting Capacity	630kg-800kg
Travel Max (m)	25
Sizes	Each lifting capacity has new sizes
Stops	2-6
Headroom (mm)	3900-4300
Pit (mm)	1250-1500
Location	Indoors & Outdoors
Installation Type	Crane in, Pre-built
Safety Sensors	Doors: Static Light Curtain
Emergency Power	Battery Powered
Emergency Phone	4G emergency phone handset with sim located at cabin controls– first year included
Installation time	2 days per 2 floors
Servicing recommended	<p>A minimum of 1 service per 3 months is required by AS1735, the manufacturer & Safe Work Australia. Additional servicing maybe required for the following situations.</p> <ul style="list-style-type: none"> -Heavy usage -Essential mobility access -Coastal/harsh/Warmer conditions -Older lift (5+ years) -Damage from environmental factors like flooding.
Warranty	12 months
Manufacturing + Shipping Lead time	16 weeks
Compliance	<p>Lift Code: AS1735-1 (Lifts, escalators and moving walks – General requirements</p> <p>Lift Code: AS1735-12 Facilities for persons with disabilities - Accessible lift design (DDA)</p>
Power Requirements	Separate Independent 3-phase circuit to controller location with 5m of tail
Structural Requirements	Structurally Certified Pit & cut outs true/ plumb as per LC & your engineer's specifications
Retro-fit Requirements	Contact us for a complimentary site assessment to determine suitability for retro-fitting this lift into your home.



SIZING LC. DROP 630-800

The following specification details are for the LC. Drop 630-800 passenger lift. Specific plans will be provided per project; please do not build to the following specifications.

Lifting Capacity: 630kg

Single-sided	Speed	Door (DW*DH) mm	Car Size (CW*CD*CH) mm	Installation footprint (SW*SD) mm	Overhead (mm)	Pit (mm)
	1m/s	900 x 2000	1100 x 1400 x 2160	1880 x 1810	3900	1250
	1.75m/s				4000	1500
Through (180 degrees)	Speed	Door (DW*DH) mm	Car Size (CW*CD*CH) mm	Installation footprint (SW*SD) mm	Overhead (mm)	Pit (mm)
	1m/s	900 x 2000	1100 x 1400 x 2160	1880 x 1970	3900	1250
	1.75m/s				4000	1500

Lifting Capacity: 800kg

	Speed	Door (DW*DH) mm	Car Size (CW*CD*CH) mm	Installation footprint (SW*SD) mm	Overhead (mm)	Pit (mm)
Single-sided 	1m/s	950 x 2100	1200 x 1500 x 2350	2175 x 1900	4000	1250
	1.75m/s				4100	1500
	2m/s				4300	1800
	2.5m/s				4300	2000
Through (180 degrees) 	1m/s	950 x 2100	1200 x 1500 x 2350	2175 x 1950	4000	1250
	1.75m/s				4100	1500
	2m/s				4300	1800
	2.5m/s				4300	2000

FINISHES LC. DROP 630-800

Shaft



Included: Standard

Painted black 70mm thick, 90-degree angle steel structure:
Finished by client



Upgrade

Steel Fame: Painted any RAL colour: Most common colours are black, white, silver, anthracite grey

Landing & Cabin Doors Type



Included: Standard

Side opening, 2 panels: Steel

Landing & Cabin Doors Colour



Included: Standard

Brushed stainless steel



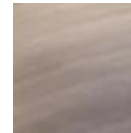
Upgrade

Coloured stainless steel
**Additional 2 weeks manufacturing*



Upgrade

Black titanium hairline stainless steel



Upgrade

Mirror finish stainless steel

Landing Door Controls



Included: Standard

Remote: mechanical button with glass lcd screen & door lock.

FINISHES LC. DROP 630-800

Cabin Walls



Upgrade
Brushed stainless
steel



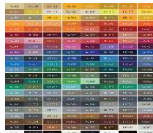
Upgrade
Coloured stainless
steel
**Additional 2 weeks
manufacturing*



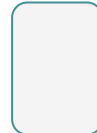
Upgrade
Mirror finish stainless
steel



Upgrade
1 Mirror: full length
or half length.



Upgrade
Painted any Ral
Colour



Upgrade
Other finish at
request



Upgrade
Raw: Walls to be
finished & fit off by
client



Upgrade
Glass wall w/

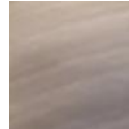
Cabin Profiles



Included: Standard
Brushed stainless
steel



Upgrade
Painted any Ral
Colour



Upgrade
Mirror finish stainless
steel

Cabin Ceiling

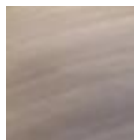


Included: Standard
4 led spotlights

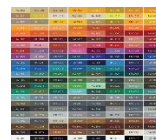
Cabin Ceiling Colour



Included: Standard
Brushed stainless steel



Included: Standard
Mirror finish stainless
steel



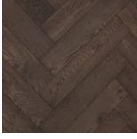
Upgrade
Painted any Ral Colour:
Most popular colours
are black, white, silver,
anthracite grey



Upgrade
Coloured stainless steel
**Additional 2 weeks
manufacturing*

FINISHES LC. DROP 630-800

Cabin Flooring



Included: Standard

Steel floor with a 5mm or 20mm set down for client to lay their own.
*Client to confirm

Cabin Controls



Included: Standard

Full length controls:
-1 Brushed stainless steel
-1 x lcd floor indicator
-Stainless steel floor level & emergency stop buttons with braille



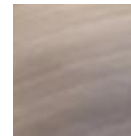
Upgrade

Painted any Ral Colour:
Most popular colours are black, white, silver, anthracite grey



Upgrade

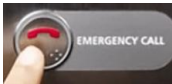
Coloured stainless steel
**Additional 2 weeks manufacturing*



Upgrade

Mirror finish stainless steel

Accessories



Included: Standard

Emergency phone on the cabin controls panel



Included: Standard

Stainless steel or painted any RAL colour handrail



LC. MRL 630-825
Low-Mid Rise Passenger Lift

SPECIFICATIONS LC. MRL 630-825

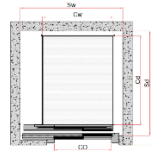
Model	LC. MRL 630-825
Model Type	Low-mid rise passenger
Manufacturing Location	Europe
Shaft Type	Shaft by client / building tolerance -0mm+20mm
Door Type	Automatic side opening 2 panel doors
Door Configuration	Single sided, through car 180 degrees (2)
Drive	Gearless Electric Traction
Speed	1m/s
Machine Cabinet	No - MRL
Lifting Capacity	630-825kg
Travel Max (m)	12
Sizes	1
Stops	2-5
Headroom (mm)	2800-3600
Pit (mm)	650-1200
Location	Indoors
Installation Type	Built on-site
Safety Sensors	Doors: Static Light Curtain
Emergency Power	Battery Powered
Emergency Phone	4G emergency phone handset with sim located at cabin controls– first year included
Installation time	6 days per 2 stops
Servicing recommended	<p>A minimum of 1 service per 3 months is required by AS1735, the manufacturer & Safe Work Australia. Additional servicing maybe required for the following situations.</p> <ul style="list-style-type: none"> -Heavy usage -Essential mobility access -Coastal/harsh/Warmer conditions -Older lift (5+ years) -Damage from environmental factors like flooding.
Warranty	1 year
Manufacturing + Shipping Lead time	24 weeks
Compliance	<p>Lift Code: AS1735-1 (Lifts, escalators and moving walks – General requirements</p> <p>Lift Code: AS1735-12 Facilities for persons with disabilities - Accessible lift design (DDA)</p>
Power Requirements	Separate Independent 3-phase circuit to controller location with 5m of tail
Structural Requirements	Structurally Certified Pit & Shaft true/ plumb as per LC & your engineer's specifications
Retro-fit Requirements	Contact us for a complimentary site assessment to determine suitability for retro-fitting this lift into your building.

SIZING LC. MRL 630-825

The following specification details are for the LC. MRL 630-825 lift with a sliding door configuration in a masonry shaft. Specific plans will be provided per project; please do not build to the following specifications.

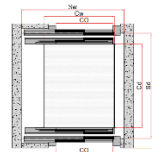
Size	CW (mm)	CD (mm)	DO (mm)	SW (mm)	SD (mm)	KG
1	1100	1400	800	1460	1650	600

Single Sided Entrance (1)



Size	CW (mm)	CD (mm)	DO (mm)	SW (mm)	SD (mm)	KG
1	1100	1400	900	1460	1740	600

Through car 180 degrees (2)



SELECTIONS LC. MRL 630-825

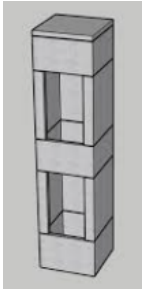
Drive



Included: Standard

All electric Gearless
Traction MRL

Shaft



Included: Standard

No Shaft: Shaft is to
be built by
client/builder

Landing & Cabin Doors Type



Included: Standard

Side opening, 2
panels: Steel

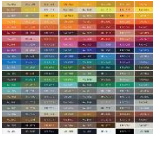


Upgrade

Side opening, 2
panels: Steel
frame with glass

SELECTIONS LC. MRL 630-825

Landing Doors Colour



Included: Standard

Painted any Ral
Colour: Most popular
colours are black,
white, silver,
anthracite grey



Upgrade

Hairline stainless
steel



Upgrade

Coloured stainless
steel
**Additional 2 weeks
manufacturing*



Upgrade

Mirror finish stainless
steel

Landing Door Controls



Included: Standard

Steel button
mounted on door
frame. Finished the
same as the door



Upgrade

Remote: black glass
touch button with lcd
screen & door lock.

Cabin Wall Finish Selection

Cabin Wall Type with Stainless steel finish



Upgrade

Stainless
-Single panel
-Single finish:
Stainless steel



Upgrade

Millenium
-3 vertical panels
-Dual finish: Stainless
steel & mirrors



Upgrade

Alhambra
-Single panel
-Single finish:
Stainless steel



Hairline Stainless
Steel (std)



Leather effect
Stainless Steel



Linen effect Stainless
Steel



Gold Alhambra
pattern mirror steel



Coloured Stainless
Steel: Bronze is
popular
**Additional 2 weeks
manufacturing*



Other at Request

SELECTIONS LC. MRL 630-825

Cabin Wall Type with Glass Finish



Upgrade

Panoramic
-Single panel
-Combination finish:
Glass & wall finishes
as above other



Clear Glass (std)



Frosted



Light Grey



Dark Grey

Additional Wall Finish Upgrades

*Upgrade for all wall types



Half Mirror Column



Half Mirror



Full Length Mirror
Column



Other at request

Cabin Profiles



Included: Standard

Hairline stainless
steel



Upgrade

Painted any Ral
Colour



Upgrade

Mirror finish stainless
steel



Upgrade

Coloured stainless
steel
*Additional 2 weeks
manufacturing



Upgrade

Polished stainless steel

Cabin Ceiling



Included: Standard

4 led spotlights



Upgrade

2 Led Strips



Upgrade

Circle matrix
Fluorescents



Upgrade

Frosted glass diffused
square led



Upgrade

Frosted glass diffused
diamond led

SELECTIONS LC. MRL 630-825

Cabin Ceiling Colour



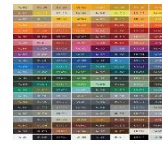
Included: Standard
Polished stainless steel



Upgrade
Hairline stainless steel



Upgrade
Gold Mirror stainless steel



Upgrade
Painted any Ral Colour

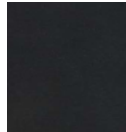


Upgrade
Coloured stainless steel
**Additional 2 weeks manufacturing*

Cabin Flooring



Included: Standard
Steel floor with a 5mm or 20mm set down for client to lay their own.
**Client to confirm*



Included: Standard
Non-Slip Black Rubber



Included: Standard
Non-Slip Alto Grey Rubber

Cabin Control Types



Included: Standard
Full length controls



Upgrade
Compact: Half height controls

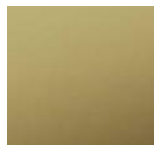


Upgrade
DMG Cut: Half height controls

Cabin Controls



Included: Standard
Hairline Stainless Steel



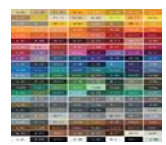
Upgrade
Gold Mirror stainless steel



Upgrade
Coloured stainless steel
**Additional 2 weeks manufacturing*



Upgrade
Mirror finish stainless steel



Upgrade
Painted any Ral Colour

Accessories



Included: Standard
Emergency phone on the cabin controls panel



Included: Standard
Handrail: Stainless steel or painted any RAL colour handrail



Upgrade
Handrail: Gold Stainless Steel



Upgrade
Handrail: Painted any Ral Colour

MID-HIGH RISE PASSENGER LIFTS




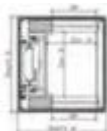
LC. DROP 1k-1.6k
Mid-High Rise Passenger Lift



SPECIFICATIONS LC. DROP 1k-1.6k

Model	LC. DROP 1k-1.6k
Model Type	Mid-high rise
Manufacturing Location	Asia
Shaft Type	Structural steel support frame – to be finished by client / building tolerance -0mm+20mm
Door Type	Automatic centre opening 2 panel doors
Door Configuration	Single sided, through car 180 degrees
Drive	Gearless electric traction
Speed	1m/s-2m/s
Machine Cabinet	No-MRL
Lifting Capacity	1,000kg-1,600kg
Travel Max (m)	35
Sizes	Each lifting capacity has new sizes
Stops	2-10
Headroom (mm)	4,000-4,300
Pit (mm)	1,250-2,000
Location	Indoors & Outdoors
Installation Type	Crane in, Pre-built
Safety Sensors	Doors: Static Light Curtain
Emergency Power	Battery Powered
Emergency Phone	4G emergency phone handset with sim located at cabin controls– first year included
Installation time	2 days per 2 floors
Servicing recommended	<p>A minimum of 1 service per 3 months is required by AS1735, the manufacturer & Safe Work Australia. Additional servicing maybe required for the following situations.</p> <ul style="list-style-type: none"> -Heavy usage -Essential mobility access -Coastal/harsh/Warmer conditions -Older lift (5+ years) -Damage from environmental factors like flooding.
Warranty	12 months
Manufacturing + Shipping Lead time	19 weeks
Compliance	<p>Lift Code: AS1735-1 (Lifts, escalators and moving walks – General requirements</p> <p>Lift Code: AS1735-12 Facilities for persons with disabilities - Accessible lift design (DDA)</p>
Power Requirements	Separate Independent 3-phase circuit to controller location with 5m of tail
Structural Requirements	Structurally Certified Pit & cut outs true/ plumb as per LC & your engineer's specifications
Retro-fit Requirements	Contact us for a complimentary site assessment to determine suitability for retro-fitting this lift into your home.

SIZING LC. DROP 1k-1.6k



The following specification details are for the LC. Drop 1k-1.6k passenger lift. Specific plans will be provided per project; please do not build to the following specifications.


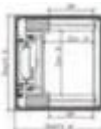
Lifting Capacity: 1000kg						
<div>Single-sided</div> 	Speed	Door (DW*DH) mm	Car Size (CW*CD*CH) mm	Installation footprint (SW*SD) mm	Overhead (mm)	Pit (mm)
	1m/s	950 x 2100	1400 x 1600 x 2350	2175 x 2000	4100	1250
	1.75m/s				4300	1500
	2m/s	950 x 2100	1100 x 2000 x 2350 (stretcher)	2175 x 2400	4300	1800
	2.5m/s				4300	2000
<div>Through (180 degrees)</div> 	1m/s	950 x 2100	1400 x 1600 x 2350	2175 x 2000	4100	1250
	1.75m/s				4300	1500
	2m/s	950 x 2100	1100 x 2000 x 2350 (stretcher)	2175 x 2400	4300	1800
	2.5m/s				4300	2000

Lifting Capacity: 1150kg						
	Speed	Door (DW*DH) mm	Car Size (CW*CD*CH) mm	Installation footprint (SW*SD) mm	Overhead (mm)	Pit (mm)
Single-sided 	1m/s	1000 x 2100	1400 x 2000 x 2350	2150 x 2250	4100	1250
	1.75m/s				4300	1500
	2m/s				4300	1800
	2.5m/s				4300	2000
Through (180 degrees) 	1m/s	1000 x 2100	1200 x 1500 x 2350	2150 x 2400	4100	1250
	1.75m/s				4300	1500
	2m/s				4300	1800
	2.5m/s				4300	2000

SIZING LC. DROP 1k-1.6k

The following specification details are for the LC. Drop 1k-1.6k passenger lift. Specific plans will be provided per project; please do not build to the following specifications.

Lifting Capacity: 1250kg						
Single-sided 	Speed	Door (DW*DH) mm	Car Size (CW*CD*CH) mm	Installation footprint (SW*SD) mm	Overhead (mm)	Pit (mm)
	1m/s	950 x 2100	1400 x 1600 x 2250	2175 x 2250	4100	1250
	1.75m/s				4300	1500
	2m/s				4300	1800
	2.5m/s				4300	2000
Through (180 degrees) 	1m/s	950 x 2100	1400 x 1600 x 2350	2175 x 2250	4100	1250
	1.75m/s				4300	1500
	2m/s				4300	1800
	2.5m/s				4300	2000

Lifting Capacity: 1600kg						
Single-sided 	Speed	Door (DW*DH) mm	Car Size (CW*CD*CH) mm	Installation footprint (SW*SD) mm	Overhead (mm)	Pit (mm)
	1m/s	1000 x 2100	1600 x 2100 x 2350 (Stretcher)	2300 x 2480	4100	1250
	1.75m/s				4300	1500
	2m/s				4300	1800
	2.5m/s				4300	2000
Through (180 degrees) 	1m/s	1000 x 2100	1200 x 1500 x 2350 (Stretcher)	2300 x 2680	4100	1250
	1.75m/s				4300	1500
	2m/s				4300	1800
	2.5m/s				4300	2000

FINISHES LC. DROP 1k-1.6k

Shaft



Included: Standard

Painted black 70mm thick, 90-degree angle steel structure:
Finished by client



Upgrade

Steel Fame: Painted any RAL colour: Most common colours are black, white, silver, anthracite grey

Landing & Cabin Doors Type



Included: Standard

Side opening, 2 panels: Steel

Landing & Cabin Doors Colour



Included: Standard

Brushed stainless steel



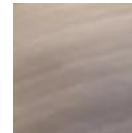
Upgrade

Coloured stainless steel
**Additional 2 weeks manufacturing*



Upgrade

Black titanium hairline stainless steel



Upgrade

Mirror finish stainless steel

Landing Door Controls



Included: Standard

Remote: mechanical button with glass lcd screen & door lock.

FINISHES LC. DROP 1k-1.6k

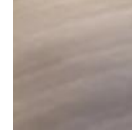
Cabin Walls



Upgrade
Brushed stainless
steel



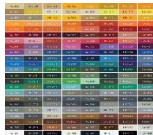
Upgrade
Coloured stainless
steel
**Additional 2 weeks
manufacturing*



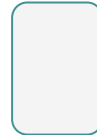
Upgrade
Mirror finish stainless
steel



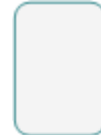
Upgrade
1 Mirror: full length
or half length.



Upgrade
Painted any Ral
Colour



Upgrade
Other finish at
request



Upgrade
Raw: Walls to be
finished & fit off by
client



Upgrade
Glass wall w/
Glass wall w/

Cabin Profiles



Included: Standard
Brushed stainless
steel



Upgrade
Painted any Ral
Colour



Upgrade
Mirror finish stainless
steel

Cabin Ceiling

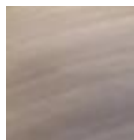


Included: Standard
4 led spotlights

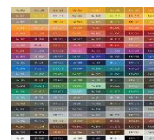
Cabin Ceiling Colour



Included: Standard
Brushed stainless steel



Included: Standard
Mirror finish stainless
steel



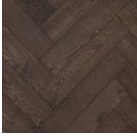
Upgrade
Painted any Ral Colour:
Most popular colours
are black, white, silver,
anthracite grey



Upgrade
Coloured stainless steel
**Additional 2 weeks
manufacturing*

FINISHES LC. DROP 1k-1.6k

Cabin Flooring



Included: Standard

Steel floor with a 5mm or 20mm set down for client to lay their own.
*Client to confirm

Cabin Controls



Included: Standard

Full length controls:
-1 Brushed stainless steel
-1 x lcd floor indicator
-Stainless steel floor level & emergency stop buttons with braille



Upgrade

Painted any Ral Colour:
Most popular colours are black, white, silver, anthracite grey



Upgrade

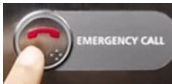
Coloured stainless steel
**Additional 2 weeks manufacturing*



Upgrade

Mirror finish stainless steel

Accessories



Included: Standard

Emergency phone on the cabin controls panel



Included: Standard

Stainless steel or painted any RAL colour handrail



LC. MR 1k-2k


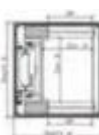
Mid-High Rise Passenger Lift

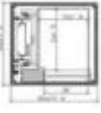

SPECIFICATIONS LC. MR 1k-2k

Model	LC. MR 1k-2k
Model Type	Mid-high rise
Manufacturing Location	Europe
Shaft Type	Shaft by client / building tolerance -0mm+20mm
Door Type	Automatic side opening 2 panel doors
Door Configuration	Single sided, through car 180 degrees (2)
Drive	Gearless Electric Traction
Speed	1m/s
Machine Cabinet	Yes – Apart of door frame on the top level
Lifting Capacity	1000-2000kg
Travel Max (m)	35
Sizes	5
Stops	10
Headroom (mm)	3600-3700
Pit (mm)	1200
Location	Indoors
Installation Type	Built on-site
Safety Sensors	Doors: Static Light Curtain
Emergency Power	Battery Powered
Emergency Phone	4G emergency phone handset with sim located at cabin controls– first year included
Installation time	6 days per 2 stops
Servicing recommended	<p>A minimum of 1 service per 3 months is required by AS1735, the manufacturer & Safe Work Australia. Additional servicing maybe required for the following situations.</p> <ul style="list-style-type: none"> -Heavy usage -Essential mobility access -Coastal/harsh/Warmer conditions -Older lift (5+ years) -Damage from environmental factors like flooding.
Warranty	1 year
Manufacturing + Shipping Lead time	24 weeks
Compliance	<p>Lift Code: AS1735-1 (Lifts, escalators and moving walks – General requirements</p> <p>Lift Code: AS1735-12 Facilities for persons with disabilities - Accessible lift design (DDA)</p>
Power Requirements	Separate Independent 3-phase circuit to controller location with 5m of tail
Structural Requirements	Structurally Certified Pit & Shaft true/ plumb as per LC & your engineer's specifications
Retro-fit Requirements	Contact us for a complimentary site assessment to determine suitability for retro-fitting this lift into your building.

SIZING LC. MR 1k-2k


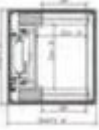
The following specification details are for the LC. MR 1k-2k lift with a sliding door configuration in a masonry shaft. Specific plans will be provided per project; please do not build to the following specifications.

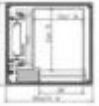

Lifting Capacity: 1000kg						
	Speed	Door (DW*DH) mm	Car Size (CW*CD*CH) mm	Installation footprint (SW*SD) mm	Overhead (mm)	Pit (mm)
Single-sided 	1m/s	900 x 2000	1400 x 1600 x 2230	2030 x 1900	3600	1200
			1150 x 2050 x 2230	1780 x 2300		
Through (180 degrees) 	1m/s	900 x 2000	1400 x 1600 x 2230	2030 x 1990	3600	1200
			1150 x 2050 x 2230	1780 x 2390		

Lifting Capacity: 1275kg						
	Speed	Door (DW*DH) mm	Car Size (CW*CD*CH) mm	Installation footprint (SW*SD) mm	Overhead (mm)	Pit (mm)
Single-sided 	1m/s	1100 x 2000	1400 x 2050 x 2230	2030 x 2300	3600	1200
Through (180 degrees) 	1m/s	1100 x 2000	1400 x 2050 x 2230	2030 x 2390	3600	1200

SIZING LC. MR 1k-2k

The following specification details are for the LC. MR 1k-2k lift with a sliding door configuration in a masonry shaft. Specific plans will be provided per project; please do not build to the following specifications.

Lifting Capacity: 1600kg						
Single-sided	Speed	Door (DW*DH) mm	Car Size (CW*CD*CH) mm	Installation footprint (SW*SD) mm	Overhead (mm)	Pit (mm)
	1m/s	1100 x 2000	1600 x 2200 x 2230	2470 x 2480	3700	1200
Through (180 degrees)	Speed	Door (DW*DH) mm	Car Size (CW*CD*CH) mm	Installation footprint (SW*SD) mm	Overhead (mm)	Pit (mm)
	1m/s	1100 x 2000	1600 x 2200 x 2230	2470 x 2540	3700	1200

Lifting Capacity: 2000kg						
	Speed	Door (DW*DH) mm	Car Size (CW*CD*CH) mm	Installation footprint (SW*SD) mm	Overhead (mm)	Pit (mm)
Single-sided	1m/s	1100 x 2000	1600 x 2500 x 2230	2470 x 2350	3600	1200
						
Through (180 degrees)	1m/s	1100 x 2000	1600 x 2500 x 2230	2470 x 2840	3600	1200
						

SELECTIONS LC. MR 1k-2k

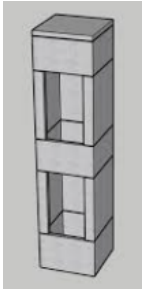
Drive



Included: Standard

All electric Gearless
Traction MRL

Shaft



Included: Standard

No Shaft: Shaft is to
be built by
client/builder

Landing & Cabin Doors Type



Included: Standard

Side opening, 2
panels: Steel

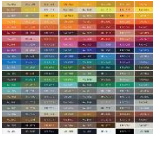


Upgrade

Side opening, 2
panels: Steel
frame with glass

SELECTIONS LC. MR 1k-2k

Landing Doors Colour



Included: Standard

Painted any Ral
Colour: Most popular
colours are black,
white, silver,
anthracite grey



Upgrade

Hairline stainless
steel



Upgrade

Coloured stainless
steel
**Additional 2 weeks
manufacturing*



Upgrade

Mirror finish stainless
steel

Landing Door Controls



Included: Standard

Steel button
mounted on door
frame. Finished the
same as the door



Upgrade

Remote: black glass
touch button with lcd
screen & door lock.

Cabin Wall Finish Selection

Cabin Wall Type with Stainless steel finish



Upgrade

Stainless
-Single panel
-Single finish:
Stainless steel



Upgrade

Millenium
-3 vertical panels
-Dual finish: Stainless
steel & mirrors



Upgrade

Alhambra
-Single panel
-Single finish:
Stainless steel



Hairline Stainless
Steel (std)



Leather effect
Stainless Steel



Linen effect Stainless
Steel



Gold Alhambra
pattern mirror steel



Coloured Stainless
Steel: Bronze is
popular
**Additional 2 weeks
manufacturing*



Other at Request

SELECTIONS LC. MR 1k-2k

Cabin Wall Type with Glass Finish



Upgrade

Panoramic
-Single panel
-Combination finish:
Glass & wall finishes
as above other



Clear Glass (std)



Frosted



Light Grey



Dark Grey

Additional Wall Finish Upgrades

*Upgrade for all wall types



Half Mirror Column



Half Mirror



Full Length Mirror
Column



Other at request

Cabin Profiles



Included: Standard

Hairline stainless
steel



Upgrade

Painted any Ral
Colour



Upgrade

Mirror finish stainless
steel



Upgrade

Coloured stainless
steel
*Additional 2 weeks
manufacturing



Upgrade

Polished stainless steel

Cabin Ceiling



Included: Standard

4 led spotlights



Upgrade

2 Led Strips



Upgrade

Circle matrix
Fluorescents



Upgrade

Frosted glass diffused
square led



Upgrade

Frosted glass diffused
diamond led

SELECTIONS LC. MR 1k-2k

Cabin Ceiling Colour



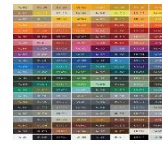
Included: Standard
Polished stainless steel



Upgrade
Hairline stainless steel



Upgrade
Gold Mirror stainless steel



Upgrade
Painted any Ral Colour

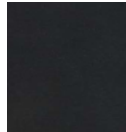


Upgrade
Coloured stainless steel
**Additional 2 weeks manufacturing*

Cabin Flooring



Included: Standard
Steel floor with a 5mm or 20mm set down for client to lay their own.
**Client to confirm*



Included: Standard
Non-Slip Black Rubber



Included: Standard
Non-Slip Alto Grey Rubber

Cabin Control Types



Included: Standard
Full length controls



Upgrade
Compact: Half height controls

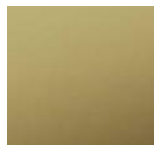


Upgrade
DMG Cut: Half height controls

Cabin Controls



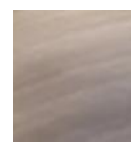
Included: Standard
Hairline Stainless Steel



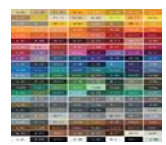
Upgrade
Gold Mirror stainless steel



Upgrade
Coloured stainless steel
**Additional 2 weeks manufacturing*



Upgrade
Mirror finish stainless steel



Upgrade
Painted any Ral Colour

Accessories



Included: Standard
Emergency phone on the cabin controls panel



Included: Standard
Handrail: Stainless steel or painted any RAL colour handrail



Upgrade
Handrail: Gold Stainless Steel



Upgrade
Handrail: Painted any Ral Colour

SELECTIONS LC. MR 1k-2k

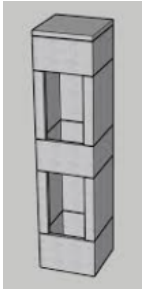
Drive



Included: Standard

All electric Gearless
Traction MRL

Shaft



Included: Standard

No Shaft: Shaft is to
be built by
client/builder

Landing & Cabin Doors Type



Included: Standard

Side opening, 2
panels: Steel

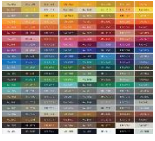


Upgrade

Side opening, 2
panels: Steel
frame with glass

SELECTIONS LC. MR 1k-2k

Landing Doors Colour



Included: Standard

Painted any Ral
Colour: Most popular
colours are black,
white, silver,
anthracite grey



Upgrade

Hairline stainless
steel



Upgrade

Coloured stainless
steel
**Additional 2 weeks
manufacturing*



Upgrade

Mirror finish stainless
steel

Landing Door Controls



Included: Standard

Steel button
mounted on door
frame. Finished the
same as the door



Upgrade

Remote: black glass
touch button with lcd
screen & door lock.

Cabin Wall Finish Selection

Cabin Wall Type with Stainless steel finish



Upgrade

Stainless
-Single panel
-Single finish:
Stainless steel



Upgrade

Millenium
-3 vertical panels
-Dual finish: Stainless
steel & mirrors



Upgrade

Alhambra
-Single panel
-Single finish:
Stainless steel



Hairline Stainless
Steel (std)



Leather effect
Stainless Steel



Linen effect Stainless
Steel



Gold Alhambra
pattern mirror steel



Coloured Stainless
Steel: Bronze is
popular
**Additional 2 weeks
manufacturing*



Other at Request

SELECTIONS LC. MR 1k-2k

Cabin Wall Type with Glass Finish



Upgrade

Panoramic
-Single panel
-Combination finish:
Glass & wall finishes
as above other



Clear Glass (std)



Frosted



Light Grey



Dark Grey

Additional Wall Finish Upgrades

*Upgrade for all wall types



Half Mirror Column



Half Mirror



Full Length Mirror
Column



Other at request

Cabin Profiles



Included: Standard

Hairline stainless
steel



Upgrade

Painted any Ral
Colour



Upgrade

Mirror finish stainless
steel



Upgrade

Coloured stainless
steel

*Additional 2 weeks
manufacturing



Upgrade

Polished stainless steel

Cabin Ceiling



Included: Standard

4 led spotlights



Upgrade

2 Led Strips



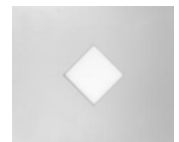
Upgrade

Circle matrix
Fluorescents



Upgrade

Frosted glass diffused
square led



Upgrade

Frosted glass diffused
diamond led

SELECTIONS LC. MR 1k-2k

Cabin Ceiling Colour



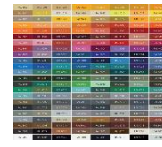
Included: Standard
Polished stainless steel



Upgrade
Hairline stainless steel



Upgrade
Gold Mirror stainless steel



Upgrade
Painted any Ral Colour

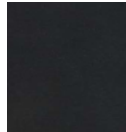


Upgrade
Coloured stainless steel
**Additional 2 weeks manufacturing*

Cabin Flooring



Included: Standard
Steel floor with a 5mm or 20mm set down for client to lay their own.
**Client to confirm*



Included: Standard
Non-Slip Black Rubber



Included: Standard
Non-Slip Alto Grey Rubber

Cabin Control Types



Included: Standard
Full length controls



Upgrade
Compact: Half height controls

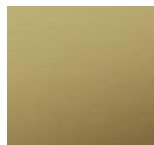


Upgrade
DMG Cut: Half height controls

Cabin Controls



Included: Standard
Hairline Stainless Steel



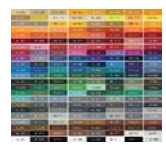
Upgrade
Gold Mirror stainless steel



Upgrade
Coloured stainless steel
**Additional 2 weeks manufacturing*



Upgrade
Mirror finish stainless steel



Upgrade
Painted any Ral Colour

Accessories



Included: Standard
Emergency phone on the cabin controls panel



Included: Standard
Handrail: Stainless steel or painted any RAL colour handrail



Upgrade
Handrail: Gold Stainless Steel



Upgrade
Handrail: Painted any Ral Colour

OUR “DO MORE” PROCESS

WHAT TO EXPECT WORKING WITH US

	LIFT COLLECTION TO PROVIDE	BUILDER/CLIENT TO PROVIDE
Feasibility Assessment: In this meeting, we'll understand your requirements and assess the feasibility of a lift for your client's needs. We'll then discuss lift designs, products, and services to find the best solution through collaboration.	+	-
Lift Design & Proposal: We'll present preliminary lift design options, product choices, and pricing details.	+	-
Pre-Order Meeting: We'll address any questions about the lift design, finalise build requirements, and ensure you're completely satisfied before you place your order. We'll also provide a builder's guide for lift requirements.	+	-
Order: We'll place your order with the manufacturer and notify all relevant parties via email and text.	+	-
Shipping: Once the lift is manufactured and ready for shipping, we'll notify all relevant parties via email and text.	+	-
Building Pre-Works Meeting On-Site if Required: We'll conduct this meeting on-site, via Zoom, or FaceTime, as needed.	+	-
Lift Arrival and Confirmation of Installation: Once we confirm the lift's arrival in Australia, we'll reconfirm installation dates and notify all relevant parties via email and text.	+	-
Pre-Installation Inspection/Meeting On-Site: We'll conduct an on-site inspection or meeting no later than 3 weeks before the installation date.	+	-
Installation of Lift: Your lift will be delivered and unloaded. Respectful, qualified and trained professionals will complete the installation to ensure compliance with Australian regulations and manufacturer requirements. Our technician will ensure they remove all lift-related rubbish.	+	-
Installation Completed: Our technicians will conduct a thorough walk-through of your lift system, providing a comprehensive manual and an in-person instructional guide to ensure you are fully familiar with its operation and features.	+	-
Before Lift Installation: Ensure all necessary carpentry, concrete, and electrical preparations are completed for lift installation.	-	+
Post Lift Installation: Complete all necessary trim, flashing, and other finishing work required for the building.	-	+
Permissions: Obtaining planning permissions required from local council, building strata or other body	-	+
12-month DLP with servicing: We do this to ensure that you are completely satisfied with the final product.	+	-

Our **Passenger Collection** is best suited for the following:

Shared Public Areas

Schools

Hospitals

Clinics

Office buildings

Warehouses

Factories

Childcare facilities

Retirement Villages

Disability access upgrades

Apartment Buildings

Government Buildings

Residential Developments

Shopping centers

Compliance

Lift Code: AS1735-1 Lifts, escalators and moving walks – General requirements

Lift Code: AS1735-2 Lifts, escalators and moving walks – Passenger lifts

Lift Code: AS1428.1 *Access & mobility* (landing and car design for accessibility)

Lift Code: AS1735-12 Facilities for persons with disabilities - Accessible lift design

Contact us for more information at:

Enquiries: hello@liftcollection.com.au

Phone: 1800 940 955

Locations Serviced: NSW & ACT

