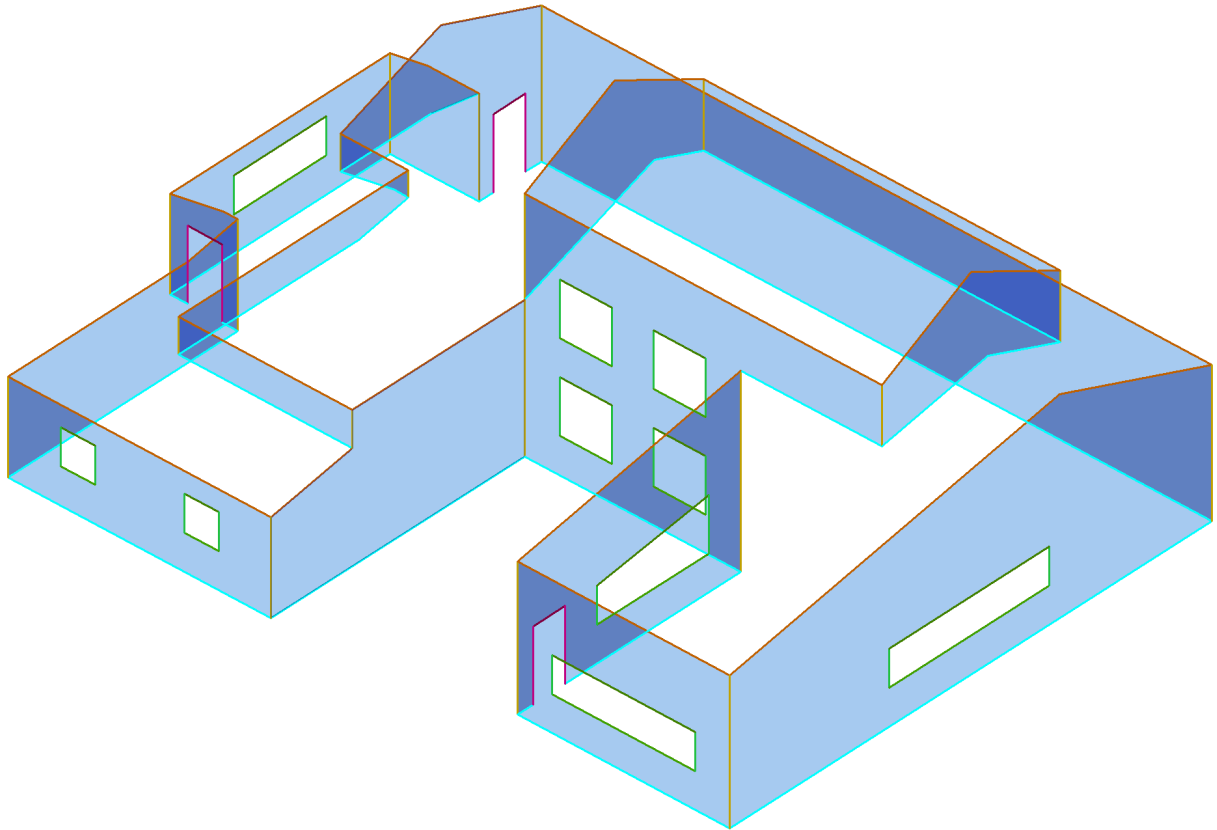
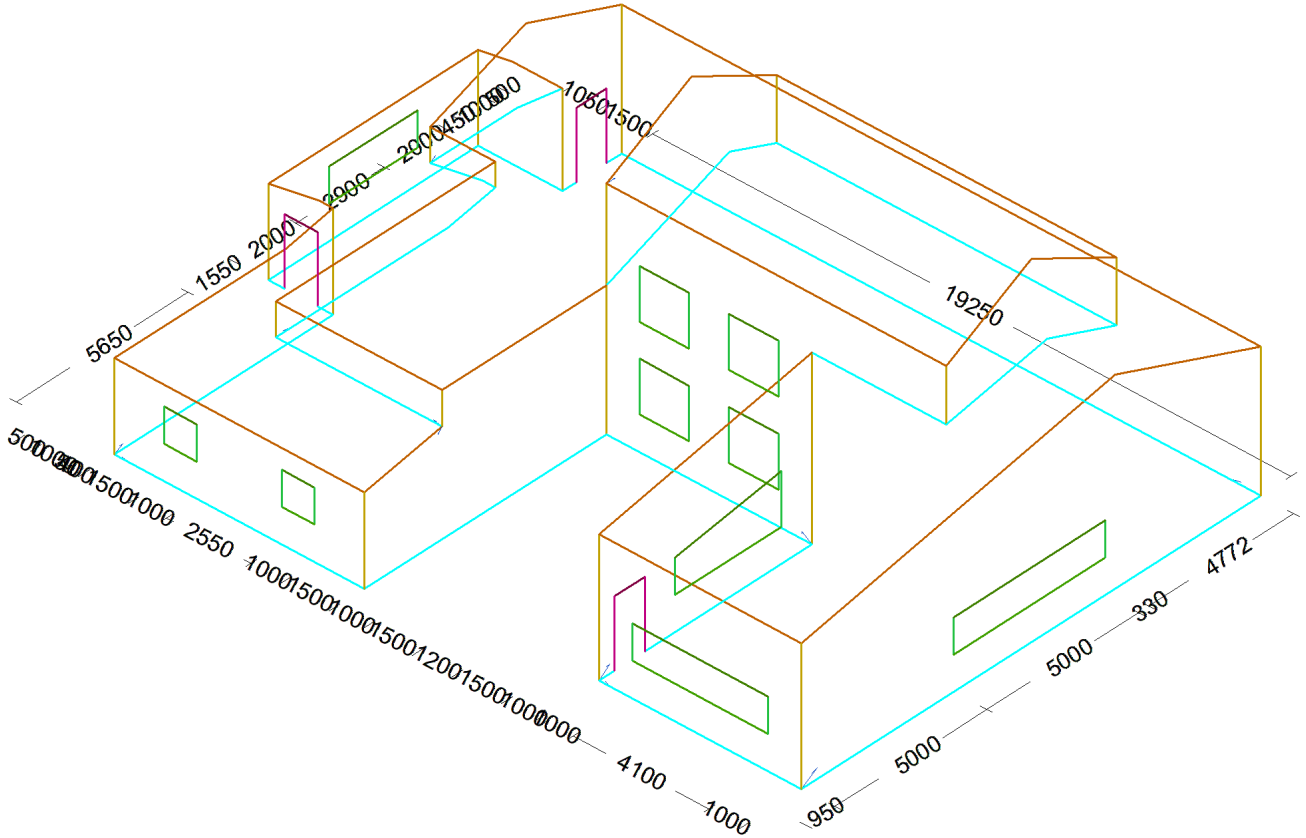


**24 Coral Way, Mandurah WA 6210**

<b>Total Area (M<sup>2</sup>)</b>	<b>391.15</b>	<b>No Of Walls</b>	<b>18</b>
<b>No Of Door Heads</b>	<b>3</b>	<b>No Of Window Head</b>	<b>10</b>
<b>No Of Door Edges</b>	<b>6</b>	<b>No Of Window Edges</b>	<b>20</b>
		<b>No Of Window Sills</b>	<b>10</b>



## Dimension Diagram

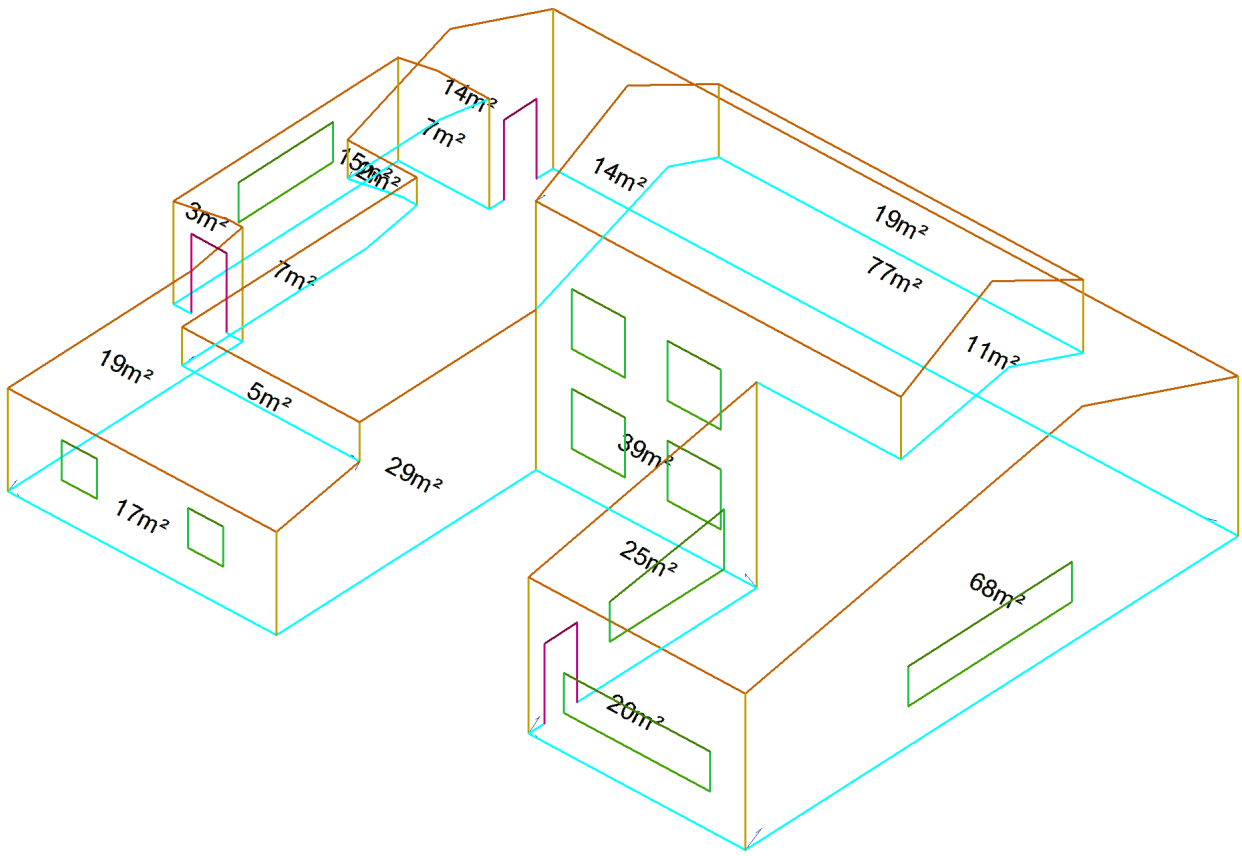


### Total Line Lengths

<b>Wall Top:</b>	136.15 m	<b>Door Head:</b>	0.00 m
<b>Wall Bottom:</b>	131.33 m	<b>Door Edge:</b>	0.00 m
<b>Wall Corner:</b>	52.48 m	<b>Window Head:</b>	0.00 m
<b>Window Sill:</b>	23.50 m	<b>Window Edge:</b>	0.00 m



# Area Diagram







## Panel & Flashing Cutting List

Category	Item Description	Qty
<b>Straight</b>	ENDR76240C,Endura,Citi,0.40	444.75 sqm
	7/6730, 1/5740, 1/5620, 1/5340, 1/5150, 1/5130, 1/5060, 1/4990, 1/4910, 1/4860, 1/4790, 1/4730, 1/4630, 1/4590, 1/4510, 2/4460, 1/4360, 2/4320, 1/4230, 2/4190, 1/4080, 2/4050, 34/4000, 5/3920, 1/3670, 1/3530, 1/3400, 1/3340, 1/3330, 1/3260, 1/3230, 1/3130, 1/3120, 1/3030, 1/2990, 1/2920, 1/2900, 2/2860, 1/2800, 1/2790, 3/2770, 1/2760, 1/2720, 2/2660, 1/2650, 1/2630, 23/2580, 1/2560, 1/2540, 1/2520, 1/2510, 2/2400, 1/2360, 2/2290, 1/2250, 1/2140, 1/2120, 1/2090, 1/1960, 4/1920, 1/1850, 14/1820, 1/1810, 2/1730, 6/1580, 1/1530, 1/1250, 21/1000, 16/980, 2/900, 1/770, 1/760, 4/580.	583.66 m
<b>External Wall-Corner</b>	External-Corner, TBA	29.92
	1/4310, 1/4220, 1/3160, 2/3070, 2/2890, 1/2130, 1/1890, 1/1280, 1/1010.	
<b>Internal Wall-Corner</b>	Internal-Corner, TBA	28.77
	1/5460, 2/4310, 1/4220, 2/2890, 1/2130, 2/1280.	
<b>Window-Sill</b>	Windowdown-Sill, TBA	26.60
	1/5310, 1/4410, 1/3810, 1/3210, 4/1810, 2/1310.	
<b>Window-Edge</b>	Windowdown-Edge, TBA	30.70
	9/1810, 11/1310.	
<b>Window-Head</b>	Windowdown-Head, TBA	26.63
	1/5310, 1/4410, 1/3840, 1/3210, 4/1810, 2/1310.	
<b>Door-Edge</b>	Door-Edge, TBA	13.86
	6/2310.	
<b>Door-Head</b>	Door-Head, TBA	3.93
	3/1310.	
<b>Wall-Top</b>	Wall-Top, TBA	136.26
	1/7550, 1/7200, 1/7110, 1/6900, 3/6420, 1/6100, 1/5650, 1/5400, 2/5250, 4/5130, 1/5080, 1/5000, 2/3360, 4/3150, 1/2590, 1/1950, 2/1580, 1/1500, 1/1070, 1/400.	
<b>Wall-Base</b>	Wall-Base, TBA	131.37
	1/7950, 3/7550, 1/7200, 1/6900, 3/6420, 1/6200, 1/6100, 1/5650, 1/5500, 2/5130, 1/5000, 1/4310, 1/4050, 1/3380, 1/2850, 1/2550, 1/2420, 1/1650, 2/1580, 1/1530, 3/500, 2/450, 1/400.	