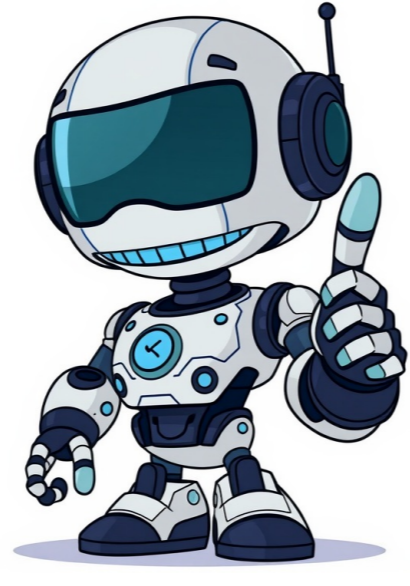


Continue

























TVH Parts is your single source for material handling, industrial and agricultural equipment. Buying parts for Crown forklifts at TVH ensures premium service and fast delivery, usually within 24-48 hours. In our online parts catalogue, we offer a wide selection of replacement parts suitable for Crown forklifts, including 24 500 new part numbers added every month. You won't need to search 'Crown forklift parts near me' as we have everything you need at your fingertips. We can provide the parts list or diagram for your machine, making it easy for you to find what you need. Our online shop features a wide range of parts and accessories suitable for Crown forklifts, as well as spare parts for many other forklift makes such as Atlet, Ausa, Balkancar, Baoli, BT, Cesab, Coventry Climax, Daewoo, DanTruck, Fenwick, Fiat, Halla, Hyundai, Lansing, LOC, Montini, Nichiyu, OMG, Rocla, Shinko, Sisu, Steinbock, Stocklin, Tailift, Unicarriers, Utilev, JCB, Jungheinrich, Kalmar, Komatsu, Manitou, Mitsubishi, Nissan, Still, TCM, Toyota, Linde, Hyster, Caterpillar, Heli, Clark, Doosan, Yale, Hangcha, Allis Chalmers, Artison, Baker, Barrett, Bendi, Big Joe, Bonser, Boss, Byd, Carer, Case, Chery, Combilift, Dalian, Desta, Enforcer, EP, Equipmax, Euroyen, Fantuzzi, Feeler, G-Power, Goodsense, Hamech, HC, Henley, Herculift, Hu-Lift, Hytsu, Irion, JAC, Jumbo, Liugong, Lonking, Mariotti, Mast, Maximal, MIC, Mora, New Holland, Nexen, Noblelift, OM-Pimespo, Ormic, Patria, Pramac, Prime Mover, Princeton, Prins, Raniero, Raymond, Redlift, Salev, Samsung, Samuk, Sany, Saxby, Schaeff, Shangli, Shantui, SMV, Soosung, Sumitomo, Sunward, TEU, Valmet, Versalift, Voltas, Wecan, XCMG, YTO, Zoomlion. Once you're in our online shop, you can easily order your forklift parts & accessories directly from TVH through your own software. Registering your forklifts allows you to save research time and reduce search errors. You can also personalise your equipment by adding your own reference, images, documents and notes. Using the technical specifications or equipment make and type, you can quickly find the correct references or names of the parts you need. You'll immediately see the price, lead time, availability, pictures and technical features for every reference. Already have an account? Log in here. New to TVH? Follow the three steps below to gain full access. Get support in your language from our experts in over 90 branches worldwide. With over 5,000 employees and more than 50 years of experience, we have all the knowledge to keep you going. We have the most extensive stock of parts for material handling, industrial, construction and agricultural equipment. Get next-day delivery on almost all parts, shipped directly from our local distribution centres. Submit the application form to specify your business needs and request your customer account. Our sales team will contact you within 3 business days to talk about your business needs and complete registration. After your account is set up, you'll receive a personal login to our online shop. We will guide you in finding parts and placing your first order. Over 75,000 customers trust TVH as their spare parts supplier to ensure their client's equipment fleet runs smoothly and efficiently. It starts with a customer account. Becoming an American manufacturer of industrial forklift trucks, not to be confused with Crown International, requires a company type that is private. The headquarters are in New Bremen, Ohio. Company type: Private. Founded: 1945. Headquarters: New Bremen, Ohio, USA. Products: Lift Trucks. Revenue: \$5.29 billion (2024). Number of employees: 20,300 worldwide. Website: www.crown.com. A Crown Equipment dealership in Vandalia, Ohio. Based in Ohio, Crown stands as the fifth-largest manufacturer, achieving \$5.29 billion in global sales for fiscal year 2024. Founded in 1945 by Carl and Allen Dicke alongside their son Jim Dicke, the company began by crafting temperature controls for coal-burning furnaces and later television antenna rotators. Over time, Crown expanded its focus, eventually finding its niche in material handling. Its lift trucks are now utilized globally, aiding in transporting goods through narrow aisles in warehouses, distribution centers, and manufacturing facilities. After Carl's passing in 1952, Jim Dicke assumed leadership, later succeeded by Jim Dicke II from 1980 to 2002, who remains the current CEO. Jim Dicke III now serves as the company's president. Crown produces up to 85% of its lift truck components, ranging from wire harnesses to electric motors. The company's manufacturing spans over 1.5 million square feet in west central Ohio, with additional facilities in North Carolina, Indiana, and Illinois. Operations in Germany and Mexico include manufacturing, distribution, and sales. Since 2006, a 150,000-square-foot facility in Suzhou, China, has produced hand pallet trucks. All Crown facilities, including engineering and design centers, hold ISO 9001:2000 certification. Recognized for environmental efforts, Crown received the Ohio Governor's Award for Pollution Prevention in 1992 and was named a Waste Minimization Partner by the EPA in 2004. By eliminating chromium from paints and upgrading to powder coat lines, Crown reduced hazardous waste emissions by over 300,000 pounds annually, saving \$65,000. The company's product lineup includes narrow-aisle stacking equipment, counterbalanced trucks, and specialized vehicles like the TSP 6000 Series, which won international design awards. Innovations like the 1972 RC Series truck, featuring a side stance for better visibility, and the 1980 RR Series for narrow aisles, highlight Crown's engineering advancements. Crown Equipment Corporation's Journey from Humble Beginnings to Leading Material Handling Manufacturer ===== Crown's ST/SX 3000 Stacker Series received a prestigious Gold IDEA Award in 2007, recognizing its exceptional design. The X10 handle, used across various Crown products, also won a coveted GOOD DESIGN award from the Chicago Athenaeum: Museum of Architecture and Design in 2004. Another notable achievement is the Crown Wave Work Assist Vehicle®, launched in the late 1990s, which transformed material handling with its innovative design. This vehicle has garnered numerous accolades, including a Red Dot Design award for High Quality Design in 2000 and a Gold IDEA Award from the Industrial Designers Society of America. In March 2008, Crown received significant funding from the state of Ohio to conduct fuel cell research. This initiative aims to overcome technical and commercial barriers, paving the way for fuel cell-powered material handling equipment. The study will enable Crown to refine its lift trucks with fuel cell power packs, ensuring compliance with industry standards. Crown has also strengthened its partnership network through branding agreements. In January 2008, a collaboration with Komatsu lift trucks enabled the distribution of internal combustion lift trucks in the United States and Canada. Later, an agreement with CLARK Material Handling Company supplied Crown with privately branded internal combustion trucks for factory stores and independent dealers. The company has continued to innovate, introducing its first company-manufactured internal combustion (IC) forklift - the C-5 Series. This model boasts an industrial spark-ignited engine, advanced radiator cooling system, and design innovations enhancing operator visibility, comfort, and productivity. Crown's commitment to training is also noteworthy. The Demonstrated Performance® method, which emphasizes mastering core skills before progressing, earned an Award of Excellence for Outstanding Instructional Product from the International Society for Performance Improvement (ISPI). This approach allows service technicians to study and practice at their own pace, completing training modules. The company's rich history dates back to the 1920s, when it manufactured temperature controls for coal-burning furnaces. Over the years, Crown has adapted to changing markets, producing television antenna rotators in the late 1940s and expanding its product line in subsequent decades. Crown's growth and survival were largely fueled by its involvement in contract work, manufacturing mechanical and electrical components for private companies like Baldwin Pianos and IBM as well as the US government, particularly the military sector. The company entered the material handling industry with niche products that major players showed little interest in. Following its first shipment in 1956, Crown developed specialized lift trucks, including stockpickers and order pickers for the US government, a hamper-dumper truck for the US Postal Service, and casket-carrying vehicles for funeral parlors. However, Crown later shifted focus from producing one-off units to developing two lines of E-Z Lift Trucks: an H series (hand-operated) and a B series (battery-powered). By 1959, lift trucks generated about \$50,000 in annual sales, while antenna rotators produced around \$700,000 annually. Yet, Crown began transitioning into the lift truck business at this time. The company discontinued manufacturing rotators by late 2000. Design Teams: A Story of Growth and Innovation ===== Crown Equipment Corporation, a family-owned business since 1945, has been celebrating 80 years of manufacturing award-winning forklift designs. The company's humble beginnings in a small room in Ohio have evolved into a global presence with headquarters in North America, Europe, Australia, Southeast Asia, and China. Crown's commitment to innovation has led to creative solutions in design, focusing on improving capacity, speed, and ergonomic challenges. The company's focus on battery-powered forklifts while maintaining support for long-lasting gas machines is a testament to their dedication to the future. With 24 manufacturing facilities worldwide, Crown produces high-quality parts for their clients, ensuring the highest levels of quality and integrity. Fast Lift Parts, the #1 source for OEM-quality Crown parts, offers free shipping on qualifying orders exceeding \$650. Their commitment to innovation has led to a wide range of products, including manual pallet jack parts and replacement parts, catering to the needs of businesses around the world. As Crown continues to evolve, their dedication to quality and customer satisfaction remains unchanged. Note: I've rewritten the text in a way that maintains the original meaning while adhering to one of the three rewriting methods (in this case, INCREASE BURSTINESS).