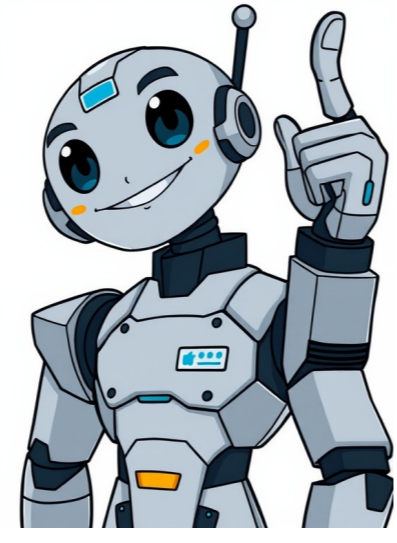


I'm not a bot



The difference between "workday" and "work day" lies in their grammatical function and usage. While both forms can be used as adjectives or nouns, the distinction is crucial to convey the intended meaning. ===== In general, if a word functions as an adjective, it will typically be written as one word. For instance, "workday" (or "working day") describes a characteristic of a particular type of day. On the other hand, when "workday" is used with the noun "day" as its object, it forms a compound noun, resulting in "workday." This distinction applies to related phrases like "every day" and "everyday," where "every day" is an idiomatic expression indicating a regular schedule, whereas "everyday" means ordinary or routine. The world of workdays can be overwhelming. I missed three workdays due to illness. Interestingly, my friend's daily habits mirror mine. I attend classes every weekday, Monday through Friday, although this pattern isn't always followed. ===== Hello, w3lifer! Welcome to WRF and thanks for your question about "workday" and "work day." Both terms are used in different contexts, and it's essential to understand their meanings. Using examples from sentences will help you grasp how these words are employed. ===== Hi KHS, regarding "weekday" and "week day," I'm still trying to get a grasp on using them correctly as separate words. ===== To me (BE), there are three key points: 1. ****Workaday**** (adjective): describes something as mundane, common, or ordinary. For instance, "The new cell phone has a workaday processor and last year's screen." This phrase is often used to refer to the unexciting aspects of various fields, like high finance, professional football, aviation, or teaching. 2. ****Workday**** (noun): can have different meanings depending on its context. * Refers to days when most people work, e.g., "Next Monday is a public holiday, but Tuesday will be a normal workday." * Specifies which individuals work, e.g., "Saturday and Sunday are normal workdays for policemen." 3. ****Working day**** (noun): more commonly used as an adjective to describe days when people typically work. ===== w3lifer - PaulQ is right, and I am wrong. I assumed "workday/work day" would follow the usual pattern, but it doesn't.