

# L I F T C O L L E C T I O N



## LC. MR 1k-2k Passenger Lift Commercial Collection


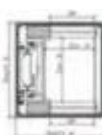
Contact us for more information at:  
Enquiries: [hello@liftcollection.com.au](mailto:hello@liftcollection.com.au)  
Phone: 1800 940 955  
Locations Serviced: Australia Wide

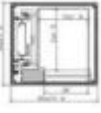

# SPECIFICATIONS LC. MR 1k-2k

Model	LC. MR 1k-2k
Model Type	Passenger
Manufacturing Location	Europe
Shaft Type	Shaft by client / building tolerance -0mm+20mm
Door Type	Automatic side opening 2 panel doors
Door Configuration	Single sided, through car 180 degrees (2)
Drive	Gearless Electric Traction
Speed	1m/s
Machine Cabinet	Yes – Apart of door frame on the top level
Lifting Capacity	1000-2000kg
Travel Max (m)	35
Sizes	5
Stops	10
Headroom (mm)	3600-3700
Pit (mm)	1200
Location	Indoors
Installation Type	Built on-site
Safety Sensors	Doors: Static Light Curtain
Emergency Power	Battery Powered
Emergency Phone	4G emergency phone handset with sim located at cabin controls– first year included
Installation time	6 days per 2 stops
Servicing recommended	<p>A minimum of 1 service per 3 months is required by AS1735, the manufacturer &amp; Safe Work Australia. Additional servicing maybe required for the following situations.</p> <ul style="list-style-type: none"> <li>-Heavy usage</li> <li>-Essential mobility access</li> <li>-Coastal/harsh/Warmer conditions</li> <li>-Older lift (5+ years)</li> <li>-Damage from environmental factors like flooding.</li> </ul>
Warranty	1 year
Manufacturing + Shipping Lead time	24 weeks
Compliance	<p>Lift Code: AS1735-1 (Lifts, escalators and moving walks – General requirements</p> <p>Lift Code: AS1735-12 Facilities for persons with disabilities - Accessible lift design (DDA)</p>
Power Requirements	Separate Independent 3-phase circuit to controller location with 5m of tail
Structural Requirements	Structurally Certified Pit & Shaft true/ plumb as per LC & your engineer's specifications
Retro-fit Requirements	Contact us for a complimentary site assessment to determine suitability for retro-fitting this lift into your building.

# SIZING LC. MR 1k-2k


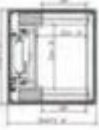
The following specification details are for the LC. MR 1k-2k lift with a sliding door configuration in a masonry shaft. Specific plans will be provided per project; please do not build to the following specifications.

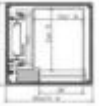

Lifting Capacity: 1000kg						
	Speed	Door (DW*DH) mm	Car Size (CW*CD*CH) mm	Installation footprint (SW*SD) mm	Overhead (mm)	Pit (mm)
Single-sided 	1m/s	900 x 2000	1400 x 1600 x 2230	2030 x 1900	3600	1200
			1150 x 2050 x 2230	1780 x 2300		
Through (180 degrees) 	1m/s	900 x 2000	1400 x 1600 x 2230	2030 x 1990	3600	1200
			1150 x 2050 x 2230	1780 x 2390		

Lifting Capacity: 1275kg						
	Speed	Door (DW*DH) mm	Car Size (CW*CD*CH) mm	Installation footprint (SW*SD) mm	Overhead (mm)	Pit (mm)
Single-sided 	1m/s	1100 x 2000	1400 x 2050 x 2230	2030 x 2300	3600	1200
Through (180 degrees) 	1m/s	1100 x 2000	1400 x 2050 x 2230	2030 x 2390	3600	1200

# SIZING LC. MR 1k-2k

The following specification details are for the LC. MR 1k-2k lift with a sliding door configuration in a masonry shaft. Specific plans will be provided per project; please do not build to the following specifications.

Lifting Capacity: 1600kg						
Single-sided	Speed	Door (DW*DH) mm	Car Size (CW*CD*CH) mm	Installation footprint (SW*SD) mm	Overhead (mm)	Pit (mm)
	1m/s	1100 x 2000	1600 x 2200 x 2230	2470 x 2480	3700	1200
Through (180 degrees)	Speed	Door (DW*DH) mm	Car Size (CW*CD*CH) mm	Installation footprint (SW*SD) mm	Overhead (mm)	Pit (mm)
	1m/s	1100 x 2000	1600 x 2200 x 2230	2470 x 2540	3700	1200

Lifting Capacity: 2000kg						
	Speed	Door (DW*DH) mm	Car Size (CW*CD*CH) mm	Installation footprint (SW*SD) mm	Overhead (mm)	Pit (mm)
Single-sided	1m/s	1100 x 2000	1600 x 2500 x 2230	2470 x 2350	3600	1200
						
Through (180 degrees)	1m/s	1100 x 2000	1600 x 2500 x 2230	2470 x 2840	3600	1200
						

# SELECTIONS LC. MR 1k-2k

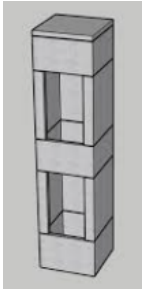
## Drive



Included: Standard

All electric Gearless  
Traction MRL

## Shaft



Included: Standard

No Shaft: Shaft is to  
be built by  
client/builder

## Landing & Cabin Doors Type



Included: Standard

Side opening, 2  
panels: Steel

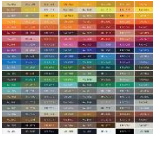


Upgrade

Side opening, 2  
panels: Steel  
frame with glass

# SELECTIONS LC. MR 1k-2k

## Landing Doors Colour



Included: Standard

Painted any Ral  
Colour: Most popular  
colours are black,  
white, silver,  
anthracite grey



Upgrade

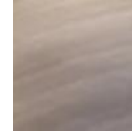
Hairline stainless  
steel



Upgrade

Coloured stainless  
steel

*\*Additional 2 weeks  
manufacturing*



Upgrade

Mirror finish stainless  
steel

## Landing Door Controls



Included: Standard

Steel button  
mounted on door  
frame. Finished the  
same as the door



Upgrade

Remote: black glass  
touch button with lcd  
screen & door lock.

## Cabin Wall Finish Selection

### Cabin Wall Type with Stainless steel finish



Upgrade

Stainless  
-Single panel  
-Single finish:  
Stainless steel



Upgrade

Millenium  
-3 vertical panels  
-Dual finish: Stainless  
steel & mirrors



Upgrade

Alhambra  
-Single panel  
-Single finish:  
Stainless steel



Hairline Stainless  
Steel (std)



Leather effect  
Stainless Steel



Linen effect Stainless  
Steel



Gold Alhambra  
pattern mirror steel



Coloured Stainless  
Steel: Bronze is  
popular  
*\*Additional 2 weeks  
manufacturing*



Other at Request

# SELECTIONS LC. MR 1k-2k

## Cabin Wall Type with Glass Finish



Upgrade

Panoramic  
-Single panel  
-Combination finish:  
Glass & wall finishes  
as above other



Clear Glass (std)



Frosted



Light Grey



Dark Grey

### Additional Wall Finish Upgrades

\*Upgrade for all wall types



Half Mirror Column



Half Mirror



Full Length Mirror  
Column



Other at request

## Cabin Profiles



Included: Standard

Hairline stainless  
steel



Upgrade

Painted any Ral  
Colour



Upgrade

Mirror finish stainless  
steel



Upgrade

Coloured stainless  
steel  
\*Additional 2 weeks  
manufacturing



Upgrade

Polished stainless steel

## Cabin Ceiling



Included: Standard

4 led spotlights



Upgrade

2 Led Strips



Upgrade

Circle matrix  
Fluorescents



Upgrade

Frosted glass diffused  
square led



Upgrade

Frosted glass diffused  
diamond led

# SELECTIONS LC. MR 1k-2k

## Cabin Ceiling Colour



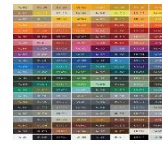
Included: Standard  
Polished stainless steel



Upgrade  
Hairline stainless steel



Upgrade  
Gold Mirror stainless steel



Upgrade  
Painted any Ral Colour

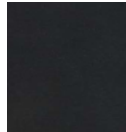


Upgrade  
Coloured stainless steel  
*\*Additional 2 weeks manufacturing*

## Cabin Flooring



Included: Standard  
Steel floor with a 5mm or 20mm set down for client to lay their own.  
*\*Client to confirm*



Included: Standard  
Non-Slip Black Rubber



Included: Standard  
Non-Slip Alto Grey Rubber

## Cabin Control Types



Included: Standard  
Full length controls



Upgrade  
Compact: Half height controls

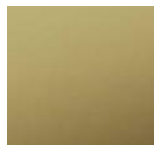


Upgrade  
DMG Cut: Half height controls

## Cabin Controls



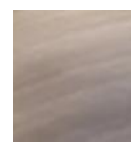
Included: Standard  
Hairline Stainless Steel



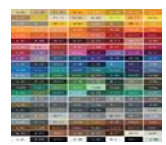
Upgrade  
Gold Mirror stainless steel



Upgrade  
Coloured stainless steel  
*\*Additional 2 weeks manufacturing*



Upgrade  
Mirror finish stainless steel



Upgrade  
Painted any Ral Colour

## Accessories



Included: Standard  
Emergency phone on the cabin controls panel



Included: Standard  
Handrail: Stainless steel or painted any RAL colour handrail



Upgrade  
Handrail: Gold Stainless Steel



Upgrade  
Handrail: Painted any Ral Colour



# SELECTIONS LC. MR 1k-2k

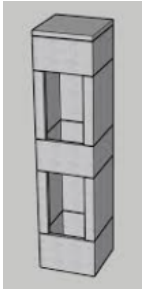
## Drive



Included: Standard

All electric Gearless  
Traction MRL

## Shaft



Included: Standard

No Shaft: Shaft is to  
be built by  
client/builder

## Landing & Cabin Doors Type



Included: Standard

Side opening, 2  
panels: Steel

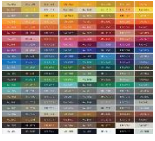


Upgrade

Side opening, 2  
panels: Steel  
frame with glass

# SELECTIONS LC. MR 1k-2k

## Landing Doors Colour



Included: Standard

Painted any Ral  
Colour: Most popular  
colours are black,  
white, silver,  
anthracite grey



Upgrade

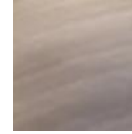
Hairline stainless  
steel



Upgrade

Coloured stainless  
steel

*\*Additional 2 weeks  
manufacturing*



Upgrade

Mirror finish stainless  
steel

## Landing Door Controls



Included: Standard

Steel button  
mounted on door  
frame. Finished the  
same as the door



Upgrade

Remote: black glass  
touch button with lcd  
screen & door lock.

## Cabin Wall Finish Selection

### Cabin Wall Type with Stainless steel finish



Upgrade

Stainless  
-Single panel  
-Single finish:  
Stainless steel



Upgrade

Millenium  
-3 vertical panels  
-Dual finish: Stainless  
steel & mirrors



Upgrade

Alhambra  
-Single panel  
-Single finish:  
Stainless steel



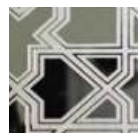
Hairline Stainless  
Steel (std)



Leather effect  
Stainless Steel



Linen effect Stainless  
Steel



Gold Alhambra  
pattern mirror steel



Coloured Stainless  
Steel: Bronze is  
popular  
*\*Additional 2 weeks  
manufacturing*



Other at Request

# SELECTIONS LC. MR 1k-2k

## Cabin Wall Type with Glass Finish



Upgrade

Panoramic  
-Single panel  
-Combination finish:  
Glass & wall finishes  
as above other



Clear Glass (std)



Frosted



Light Grey



Dark Grey

### Additional Wall Finish Upgrades

\*Upgrade for all wall types



Half Mirror Column



Half Mirror



Full Length Mirror  
Column



Other at request

## Cabin Profiles



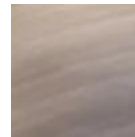
Included: Standard

Hairline stainless  
steel



Upgrade

Painted any Ral  
Colour



Upgrade

Mirror finish stainless  
steel



Upgrade

Coloured stainless  
steel  
\*Additional 2 weeks  
manufacturing



Upgrade

Polished stainless steel

## Cabin Ceiling



Included: Standard

4 led spotlights



Upgrade

2 Led Strips



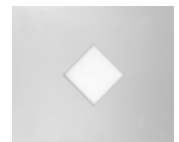
Upgrade

Circle matrix  
Fluorescents



Upgrade

Frosted glass diffused  
square led



Upgrade

Frosted glass diffused  
diamond led

# SELECTIONS LC. MR 1k-2k

## Cabin Ceiling Colour



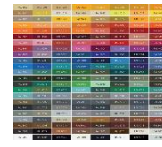
Included: Standard  
Polished stainless steel



Upgrade  
Hairline stainless steel



Upgrade  
Gold Mirror stainless steel



Upgrade  
Painted any Ral Colour

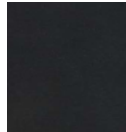


Upgrade  
Coloured stainless steel  
*\*Additional 2 weeks manufacturing*

## Cabin Flooring



Included: Standard  
Steel floor with a 5mm or 20mm set down for client to lay their own.  
*\*Client to confirm*



Included: Standard  
Non-Slip Black Rubber



Included: Standard  
Non-Slip Alto Grey Rubber

## Cabin Control Types



Included: Standard  
Full length controls



Upgrade  
Compact: Half height controls

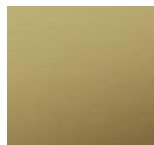


Upgrade  
DMG Cut: Half height controls

## Cabin Controls



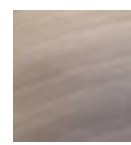
Included: Standard  
Hairline Stainless Steel



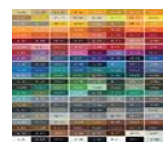
Upgrade  
Gold Mirror stainless steel



Upgrade  
Coloured stainless steel  
*\*Additional 2 weeks manufacturing*



Upgrade  
Mirror finish stainless steel



Upgrade  
Painted any Ral Colour

## Accessories



Included: Standard  
Emergency phone on the cabin controls panel



Included: Standard  
Handrail: Stainless steel or painted any RAL colour handrail



Upgrade  
Handrail: Gold Stainless Steel



Upgrade  
Handrail: Painted any Ral Colour

The **LC. MR 1k-2k** is a part of our Commercial Collection which has been curated for the following:

Shared Public Areas

Schools

Hospitals

Clinics

Office buildings

Warehouses

Factories

Childcare facilities

Retirement Villages

Disability access upgrades

Apartment Buildings

Government Buildings

Residential Developments

Shopping centers

## Compliance

Lift Code: AS1735-1 Lifts, escalators and moving walks – General requirements

Lift Code: AS1735-2 Lifts, escalators and moving walks – Passenger lifts

Lift Code: AS1428.1 *Access & mobility* (landing and car design for accessibility)

Lift Code: AS1735-12 Facilities for persons with disabilities - Accessible lift design (DDA)

Lift Code: AS1735-15 Accessibility for persons with impaired mobility in low-traffic areas

## Contact us for more information at:

Enquiries: [hello@liftcollection.com.au](mailto:hello@liftcollection.com.au)

Phone: 1800 940 955

Locations Serviced: Australia Wide

